

MU Guide

Soybean Pest Management: Bean Leaf Beetle

Michael L. Boyd and Wayne C. Bailey
State Extension Entomology Specialists

The bean leaf beetle, *Cerotoma trifurcata* (Forster), is one of the most important soybean pests in the United States. It is tied for second among all pest species attacking soybean foliage, pods and seeds. This insect was once an infrequent soybean pest in the Midwest; however, in the 1970s, soybean growers began reporting increased incidence of bean leaf beetle feeding damage.

Description and life cycle

This small beetle (at least 1/4-inch in length) overwinters as adults beneath leaf litter in wood lots adjacent to soybean fields. Once spring temperatures reach 50–55 degrees F, adults become active and seek available host plants (such as grasses, soybean plants and other legumes). Adult coloration (red, orange, tan or gray) and markings (dots, strips, or both) may vary among individuals or populations; however, all adults possess a black triangle at the base of their forewings (Figures 1 and 2). A female beetle is capable of producing 130 to 200 eggs. The reddish, spindle-shaped eggs are laid adjacent to plant stems in the upper 5 inches of the soil.

After hatching (5–7 days) from their eggs, bean leaf beetle larvae (white, cylindrical with a black head and an anal shield) feed on underground plant parts. Depending on the soil temperature, larvae may feed for three to six weeks before pupating in earthen cells. About a week later, adults emerge (beginning mid-July) to feed, mate and lay eggs. There are two, in-season generations per year in Missouri, the second of which generally emerges in September. These adults will feed on soybean or other host plants before moving into overwintering sites sometime in October.

Damage

Both bean leaf beetle larvae and adults possess chewing mouthparts. Larvae may feed on roots and root hairs but show a preference for root nodules. Even though nodule damage can diminish the plant's ability to fix atmospheric nitrogen, it is the adult feeding damage to foliage and particularly pods that is econom-

Facts at a Glance

- There are two generations of bean leaf beetle per year in Missouri.
- Both larvae and adults are soybean pests. Larvae attack the roots; adults, the foliage and pods.
- Adult foliar damage (rounded holes) differs from caterpillar damage (ragged edges); whereas, direct pod damage (outer pod wall) is less severe than that caused by grasshoppers (seeds destroyed).
- Pod damage by adults is most crucial because also it can lead to secondary disease infections of the pods and seeds and thereby lower seed quality and quantity.



Figures 1 and 2. Bean leaf beetle adults. Note characteristic black triangle at base of forewings.

ically important. Defoliation by adult bean leaf beetle is identifiable by the small round holes between the major leaflet veins (Figure 3). This damage differs from the larger, irregular holes or jagged leaflet margins caused by caterpillars and grasshoppers. Even though soybean plants may sustain more than 50 percent foliage damage, plants can generally compensate unless damage occurs during the reproductive growth stages.

Based on current research, pod damage by adult bean leaf beetles is the most important type of injury (Figure 4). This damage can cause complete pod loss

Approximate timing for bean leaf beetle infestations in Missouri.

				2 generations (in-season) annually					
Jan.	Feb.	Mar.	Apr.	May	June	Peak populations			
						mid-July to September			
						Oct.	Nov.	Dec.	

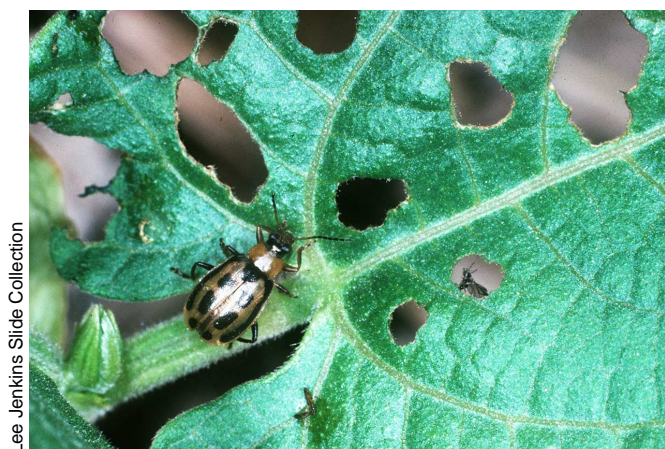


Figure 3. Bean leaf beetle adult and foliar damage.

when adults feed at the base of the pod. This type of injury is referred to as “pod clipping.” Adult damage to the outer pod wall also leads to the formation of pod lesions. Moisture can then enter through these pod lesions, and this increased moisture level permits the entry of secondary pathogens. Seeds damaged by these pathogens become shrunk, discolored and moldy. Several primary pathogens (e.g., bean pod mottle, cowpea mosaic and southern bean mosaic viruses) also can be transmitted by adult beetles. The impact of bean leaf beetles on yield has been quantified in several different studies. Overall, a reduction of 0.6 pound per acre can occur when beetles number one or more per row foot.

Scouting procedures and techniques

As soon as soybean seedlings emerge, it is important to scout fields weekly for bean leaf beetle infestations. Scouting procedures are targeted at the adult stage because sampling for the larvae is expensive, labor intensive and time consuming. Direct observations along with stand counts can be used early in the season. By midseason, either sweep nets or drop cloths are effective sampling tools. Adult bean leaf beetles are shy and when disturbed will drop to the ground or onto lower leaves. When caught in a sweep net, they usually remain at the bottom of the net hiding underneath leaves or within the folds of the net. Counts of adults as well as damaged pods are useful tools for determining insecticide applications later in the season.



Figure 4. Bean leaf beetle adult and pod damage.

Management

In bean leaf beetle pest management, various sampling tools are used to trigger insecticide applications. In Missouri, economic threshold levels vary according to the growth stage of the plant:

- **Seedling stage:** five or more bean leaf beetles or one damaged plant per foot of row
- **Past seedling stage to bloom:** 10 or more bean leaf beetles per foot of row and more than 30 percent defoliation
- **Bloom stage until seed maturity:** 10 or more bean leaf beetles per foot of row and 20 percent defoliation OR at least 15 bean leaf beetles per foot of row and at least 10 percent pod damage.

Precaution: Before you select and apply an insecticide, review the manufacturer’s label for information on safe use of the material.

Many different parasitoids and predators attack bean leaf beetles and other soybean pests. The diversity and abundance of this beneficial insect complex should be considered before applying an insecticide. The most common parasitoid enemy of bean leaf beetles is the tachinid fly, *Calatoria diabroticae* (Shimer). It attacks the adult stage but is difficult to detect under most circumstances.