



Original trial layout and as-applied map for an R3 fungicide application on August 15, 2019. Treated areas received the fungicide Azoxypop (10.5 oz/acre). Aerial image was taken at 330 feet on July 17, 2019. Note that some color differences are due to changing cloud cover during the drone flight.

# Soybean R3 Fungicide Trial

## 2019 Site 5

## Scott County

Planting date: 6/13/2019  
Seeding rate: 180,000 seeds/acre  
Variety: Pioneer 47A76L-SU76  
and LL 434L4  
Previous crop: Corn

R3 fungicide spray date: 8/15/2019  
Product: Azoxypop (10.5 oz./acre)

Scouted: 7/17 and 8/29/2019

Harvested: 10/19/2019

Replicates: 5



# Soybean R3 Fungicide Trial

## 2019 Site 5

## Scott County

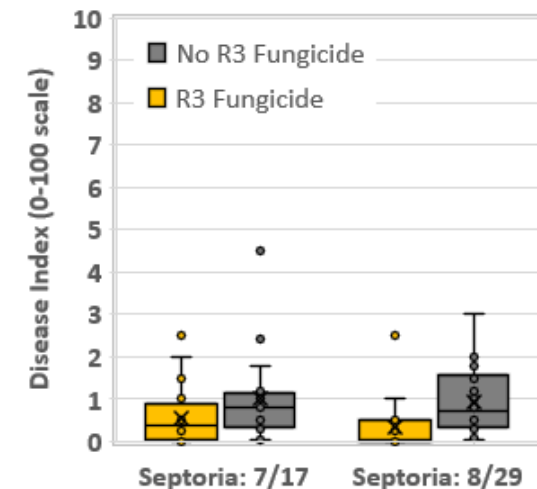
Summary of scouting data. Fungicide applied August 15, 2019. Only Septoria was identified at this location. There is little evidence that fungicide affected scouting results.

			Disease Index <sup>1</sup> (0-100)		
Disease	R3 Fungicide	Number of points	Pre-Spray 7/17/2019	Post-Spray 8/29/2019	Delta
Septoria	N	20	0.6	1.0	0.4
	Y	20	0.3	0.9	0.6
Treatment Difference					0.2

<sup>1</sup>Disease index is calculated by multiplying the percent plants with disease (incidence) times the severity of the disease and adjusting the project to a scale of 0 to 100.



Final trial layout and scouting points. Final strip layout reflects areas of the field not affected by stand issues not related to R3 Fungicide application. Points were scouted on July 17 and August 29. Aerial image was taken at 330 feet on July 17, 2019. Note on this location, two varieties were planted; we adjusted strips to insure similar numbers of strips within each variety.





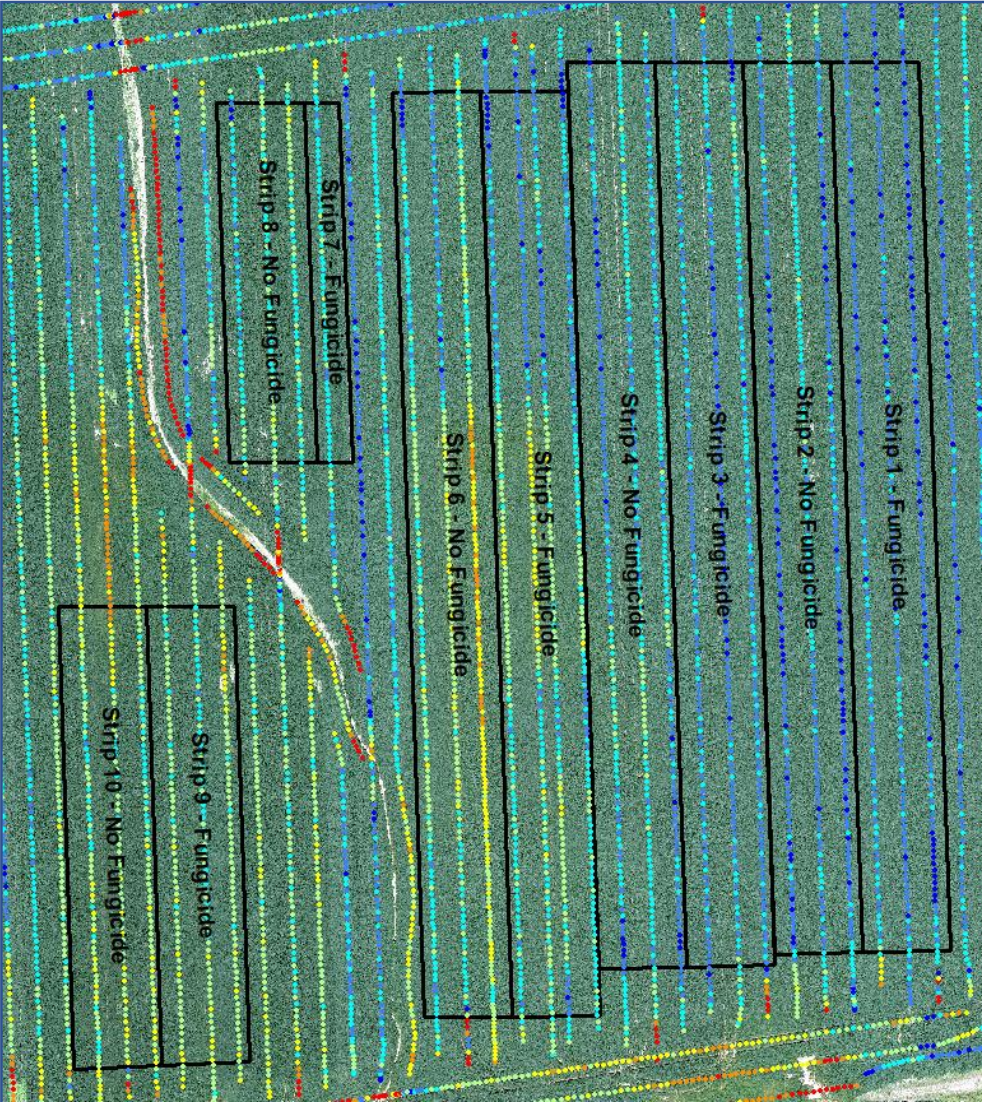
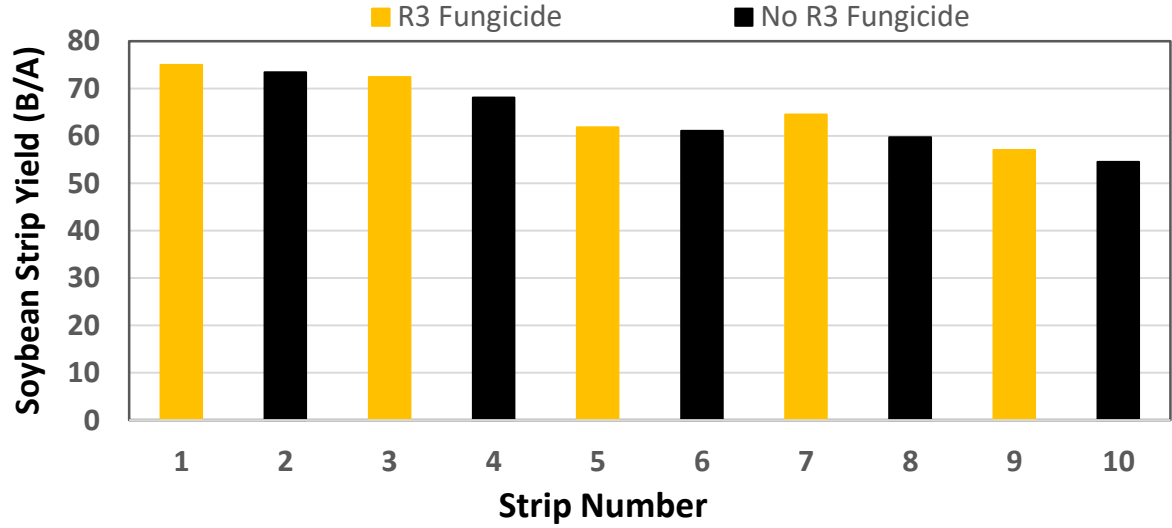
# Soybean R3 Fungicide Trial

## 2019 Site 5

## Scott County

Treatments	Mean	Delta Control
	<i>bushels/acre</i>	
All strips	64.8	--
Control (N)	63.4	--
R3 Fungicide (F)	66.2	2.8

Strip	1	2	3	4	5	6	7	8	9	10
Fung.	Y	N	Y	N	Y	N	Y	N	Y	N
Yield	75.0	73.4	72.4	68.1	61.8	61.1	64.5	59.7	57.0	54.5



● ≤30 ● 31-40 ● 41-50 ● 51-60 ● 61-70 ● 71-80 ● >80 bu/A

Soybean yield map harvested Oct. 19, 2019. Final strip layout reflects areas of the field not affected by stand issues not related to R3 Fungicide application. Aerial image was taken at 330 feet on August 29, 2019. **Strips 7-10 are a different variety than strips 1-6.**



# Soybean R3 Fungicide Trial 2019 Site 5 Scott County

July 17, 2019 (Pre-treatment)



August 29, 2019 (Post treatment)

Control (no R5 Fungicide)

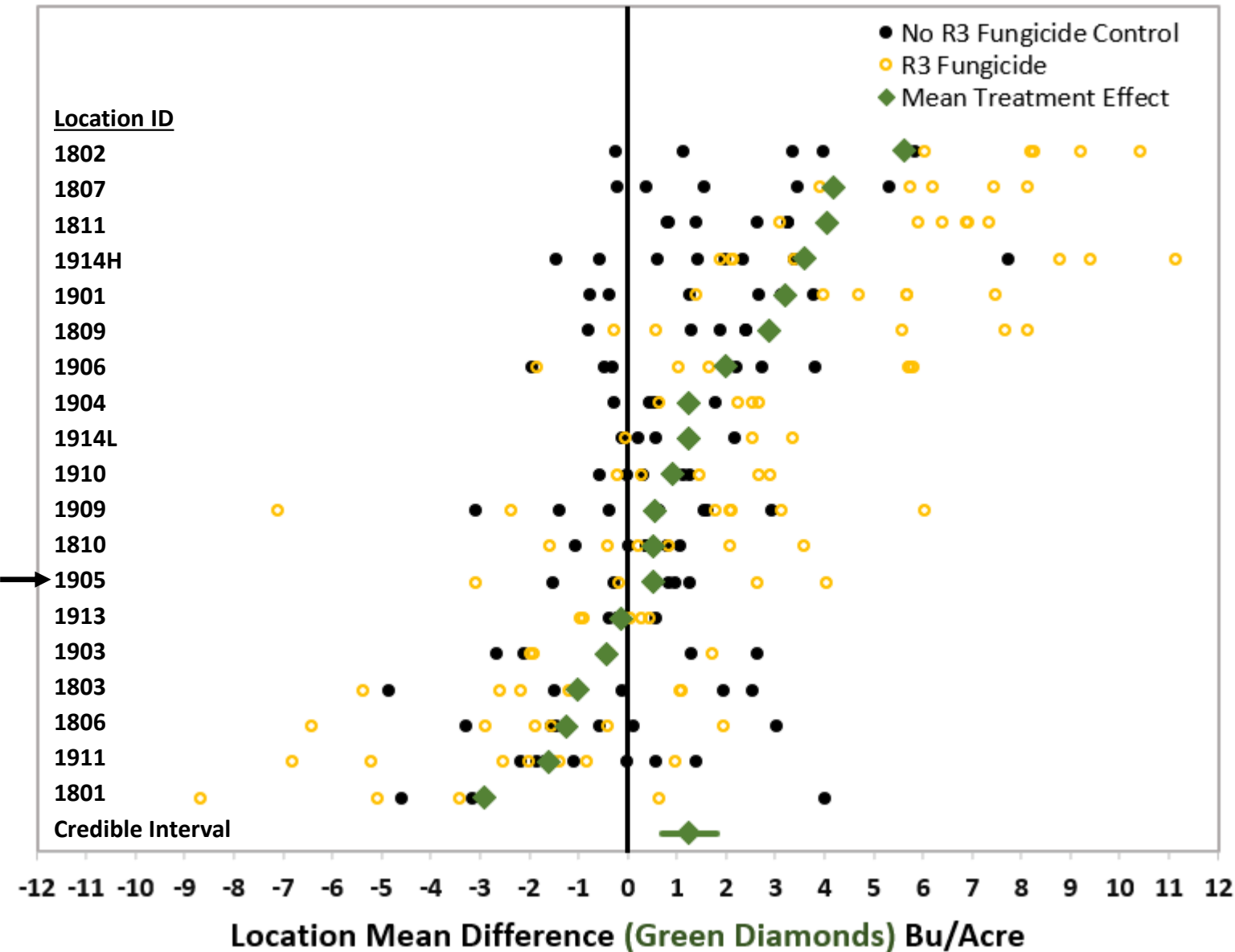


Treated (R5 Fungicide)



High resolution aerial imagery from treated and untreated strips. The top images were taken July 17, 29 days prior to the August 15 R5 fungicide application; the lower images were taken on August 29, 14 days after the fungicide application. Images on the left are from point 6 (untreated) and images on the right are from point 11 (treated) in Fig. 2. Scouting indicated low levels of Septoria at this location.

# R3 Fungicide for Soybean: Effect on yield



## Key Points:

- Across these 18 farms, R3 fungicide increased yield.
- The benefit was less than 2 bushels per acre.
- There was more than a 50% chance of a one bushel/acre response.
- Results by location suggested significant benefit a five of 18 locations.