



Original trial layout and as-applied map for an R3 fungicide application on August 7, 2019. Treated areas received the fungicide Aframe Plus (grey lines; 16 oz/acre). Aerial image was taken at 330 feet on July 30, 2019. Note that some color differences are due to changing cloud cover during the drone flight. North is to the right.

Soybean R3 Fungicide Trial 2019 Site 4 Holt County

Planting date: 6/16/2019

Seeding rate: 190,000 seeds/acre

Variety: eMerge e3782S

Previous crop: Corn

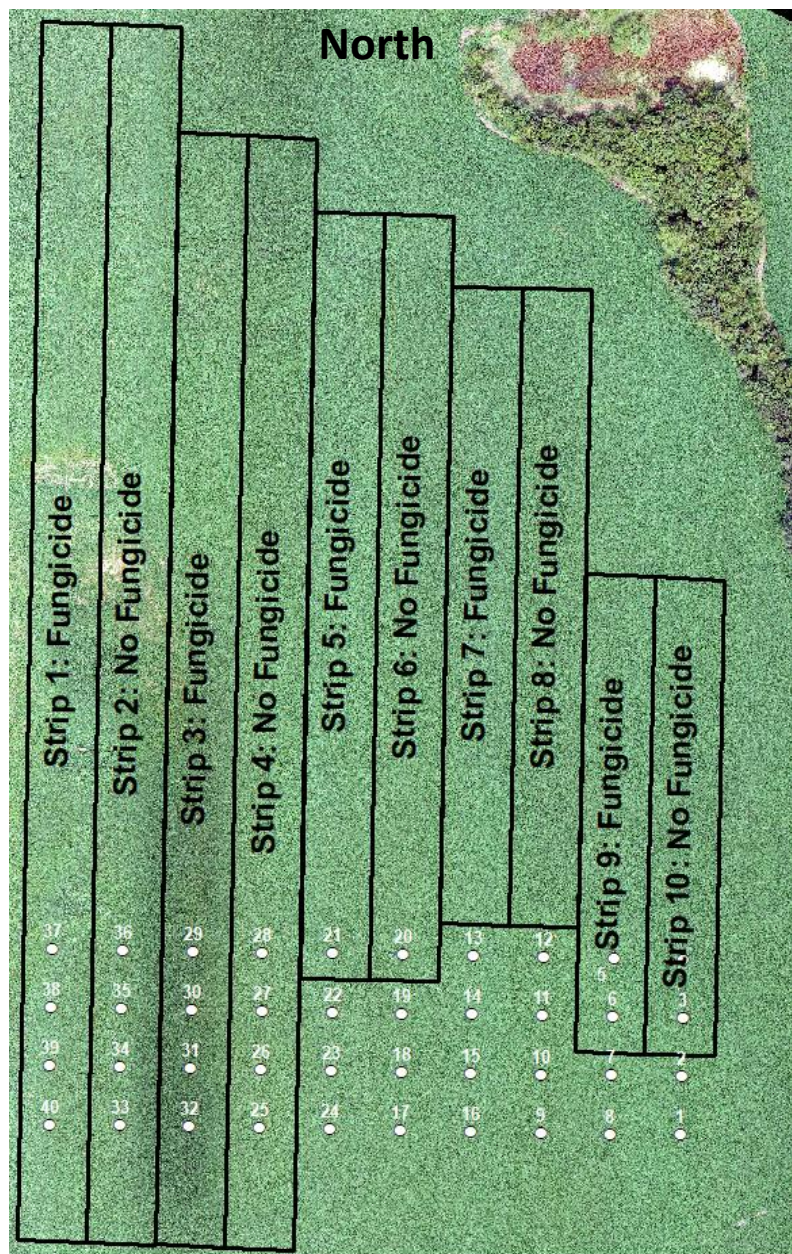
R3 fungicide spray date: 8/7/2019

Product: Aframe Plus (16 oz./acre)

Scouted: 7/30 and 8/20/2019

Harvested: 11/6/2019

Replicates: 5



Soybean R3 Fungicide Trial 2019 Site 4 Holt County

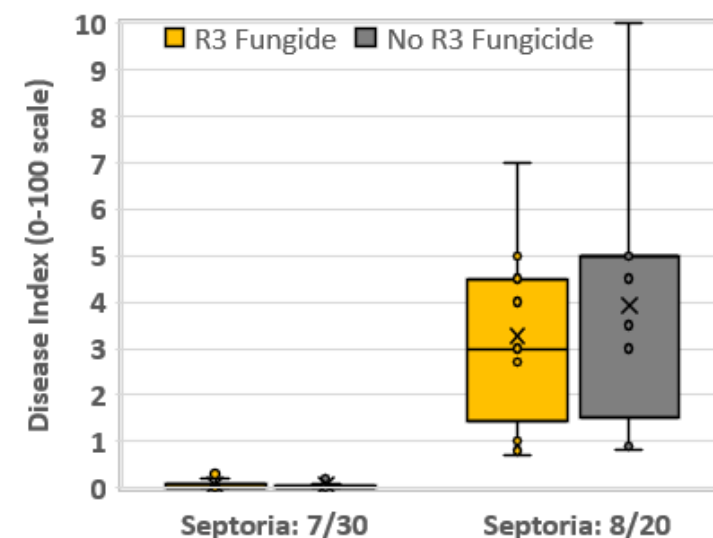
Summary of scouting data. Fungicide applied August 1, 2019. Only Septoria was identified at this location. There is little evidence that fungicide affected scouting results.

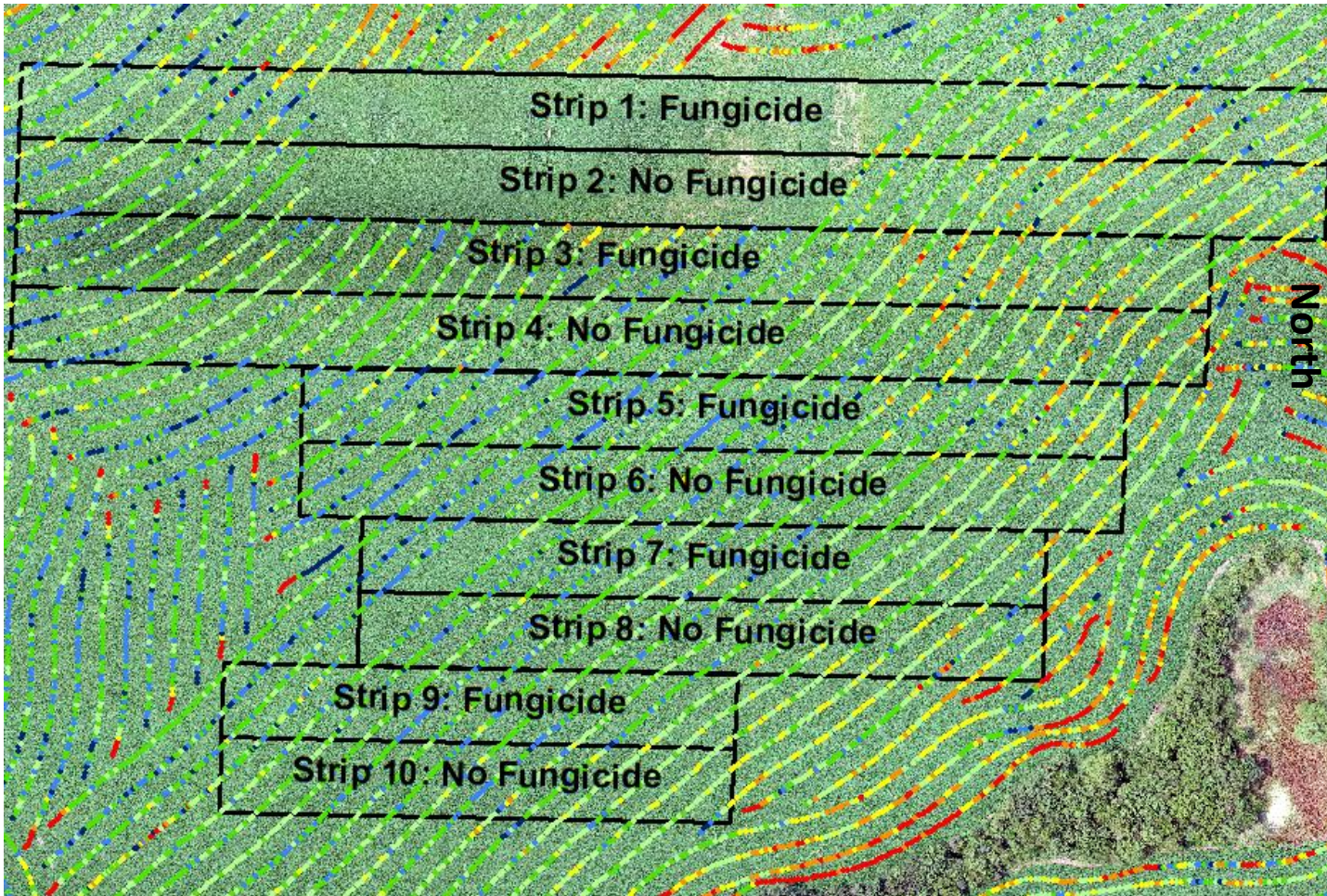
Disease	R3 Fungicide	Number of points	Disease Index ¹ (0-100)		
			Pre-Spray 7/30/2019	Post-Spray 8/20/2019	Delta
Septoria	N	20	0.1	3.9	3.8
	Y	20	0.1	3.3	3.2
Treatment Difference					-0.6

¹Disease index is calculated by multiplying the percent plants with disease (incidence) times the severity of the disease and adjusting the project to a scale of 0 to 100.

Final trial layout and scouting points. Final strip layout reflects areas of the field not affected by stand issues not related to R3 Fungicide application. Points were scouted on July 30 and August 20. Aerial image was taken at 330 feet on August 20, 2019.

Note at this location, the harvest pattern parts of the field limited our ability to use the data.





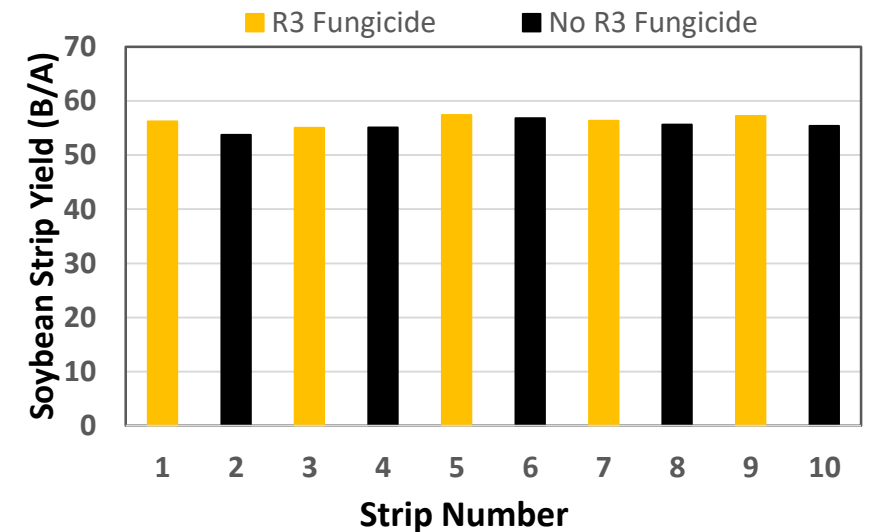
● ≤40 ● 41-45 ● 46-50 ● 51-55 ● 56-60 ● 61-65 ● >65 bu/A

Soybean yield map harvested Nov. 6, 2019. Final strip layout reflects areas of the field not affected by stand issues not related to R3 Fungicide application. Aerial image was taken at 330 feet on August 20, 2019. Note at this location, the harvest pattern parts of the field limited our ability to use the data.

Soybean R3 Fungicide Trial 2019 Site 4 Holt County

Treatments	Mean	Delta Control
	<i>bushels/acre</i>	
All strips	55.9	--
Control (N)	55.3	--
R3 Fungicide (F)	56.4	1.1

Strip	1	2	3	4	5	6	7	8	9	10
Fung.	Y	N	Y	N	Y	N	Y	N	Y	N
Yield	56.2	53.7	55	55.1	57.4	56.8	56.3	55.6	57.2	55.4



Soybean R3 Fungicide Trial

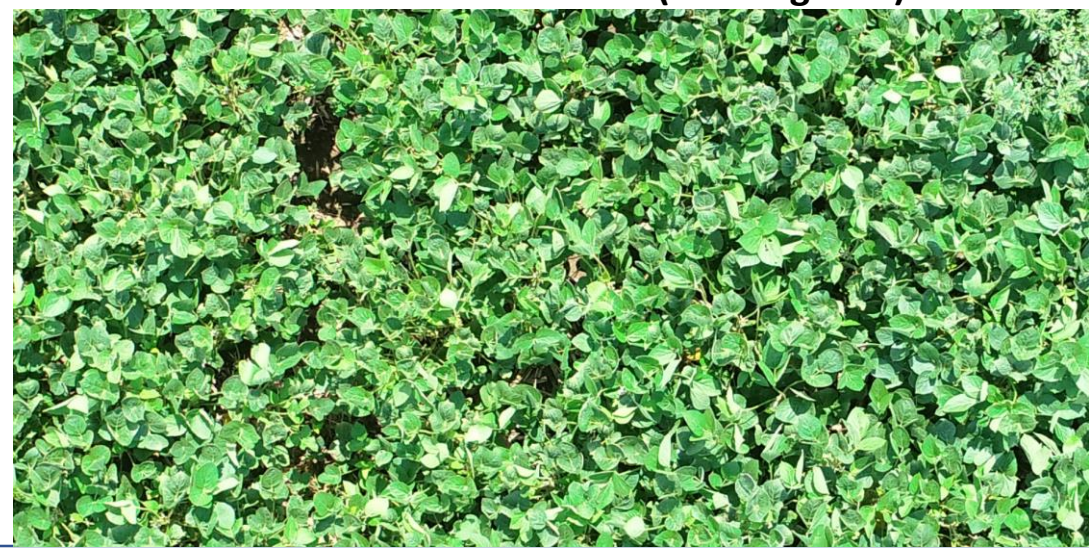
2019 Site 4

Holt County

July 30, 2019 (pre-treatment)



Treated (R3 Fungicide)

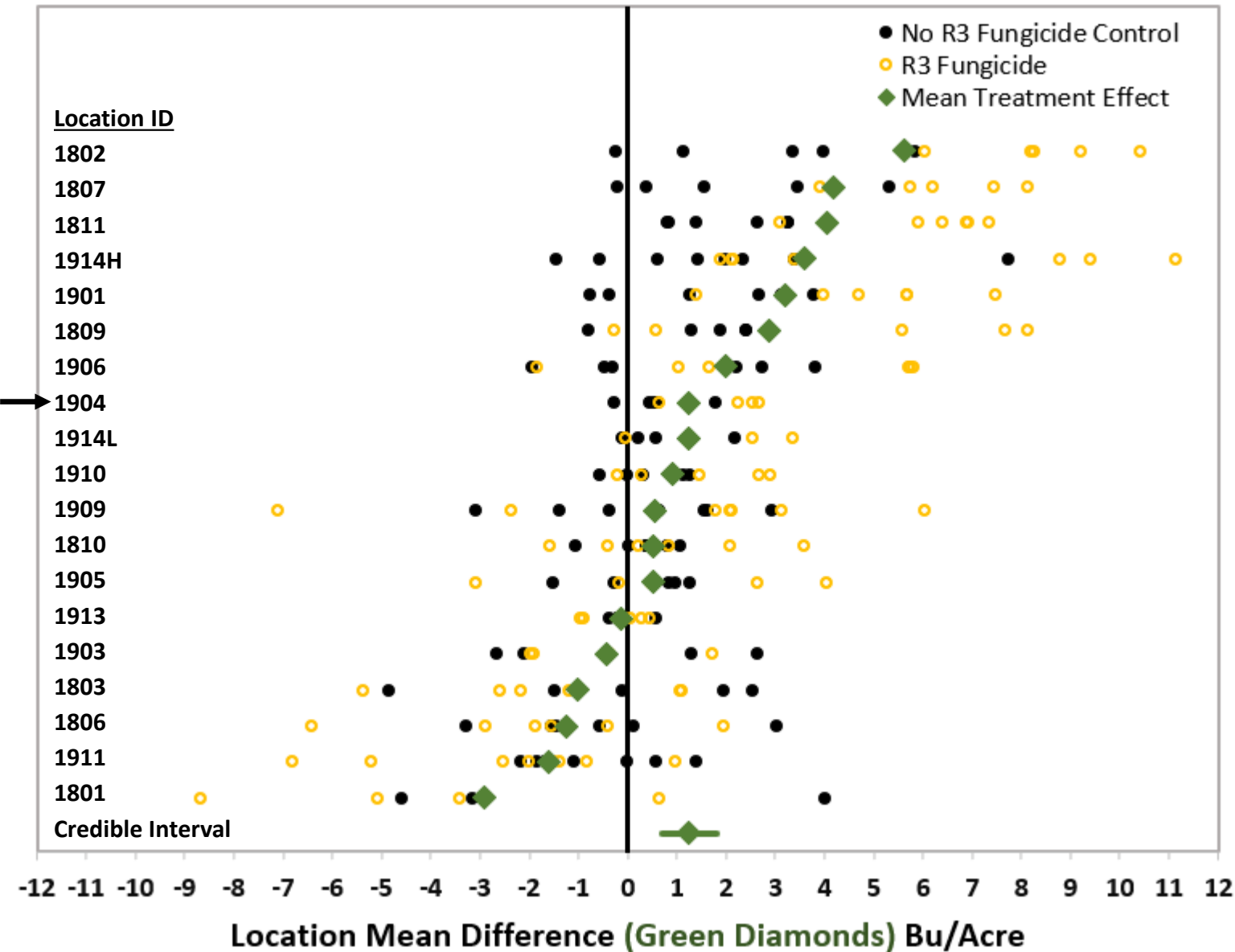


August 20, 2019 (post-treatment)

Control (No R3 Fungicide)



R3 Fungicide for Soybean: Effect on yield



Key Points:

- Across these 18 farms, R3 fungicide increased yield.
- The benefit was less than 2 bushels per acre.
- There was more than a 50% chance of a one bushel/acre response.
- Results by location suggested significant benefit a five of 18 locations.