



Original trial layout and as-applied map for an R3 fungicide application on August 11, 2019. Aerial image was taken at 330 feet on July 18, 2019.

Soybean R3 Fungicide Trial 2019 Site 11 Perry County

Planting date: 5/25/2019

Seeding rate: seeds/acre

Variety:

Previous crop: Corn

R3 fungicide spray date: 8/11/2019

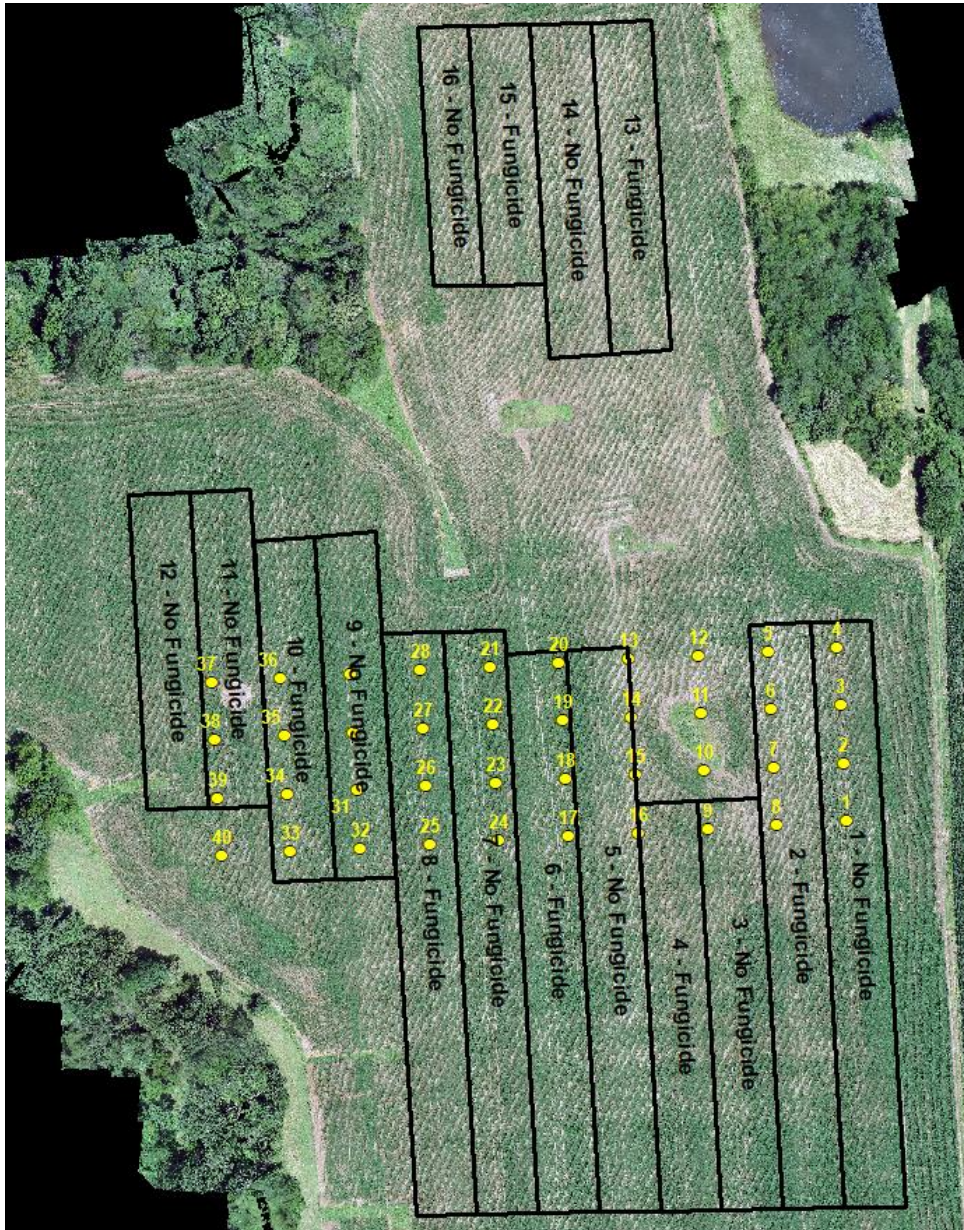
Product: Cover XL (12.8 oz./acre)

Scouted: 7/18 and 8/22/2019

Harvested: 9/16/2019

Replicates: 8

Soybean R3 Fungicide Trial 2019 Site 11 Perry County



Final trial layout and scouting points. Final strip layout reflects areas of the field not affected by stand issues not related to R3 Fungicide application. Points were scouted on July 18 and August 22. Aerial image was taken at 330 feet on July 18, 2019.

Soybean R3 Fungicide Trial

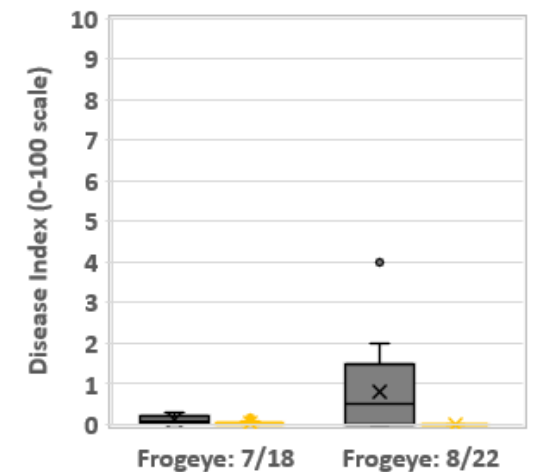
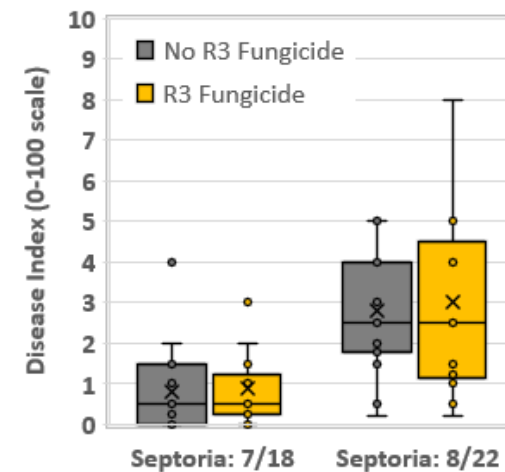
2019 Site 11

Perry County

Summary of scouting data. Note that some points fell outside of treatment strips and were not included in the analysis. At this location, seven points were not scouted because of a thunderstorm. Fungicide applied August 5, 2019. The two diseases identified at this location were Septoria and Frogeye. Observed disease levels were low. There is no evidence that fungicide affected scouting results for *Septoria*.

			Disease Index ¹ (0-100)		
Disease	R3 Fungicide	Number of points	Pre-Spray 7/18/2019	Post-Spray 8/22/2019	Delta
Septoria	N	15	0.8	2.8	2.0
	Y	13	0.9	3.0	2.1
	Treatment Difference				0.1
Frogeye	N	15	0.11	0.04	-0.07
	Y	13	0.05	0.01	-0.03
	Treatment Difference				-0.04

¹Disease index is calculated by multiplying the percent plants with disease (incidence) times the severity of the disease and adjusting the project to a scale of 0 to 100.



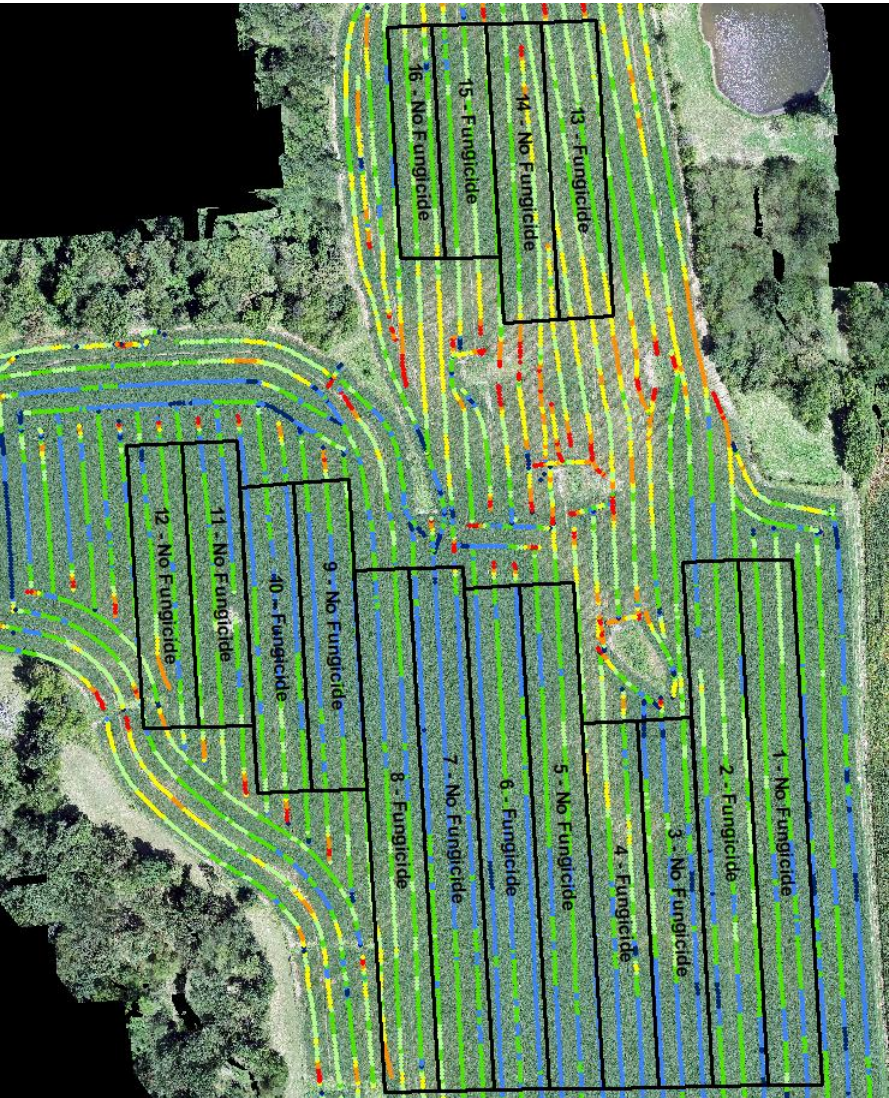
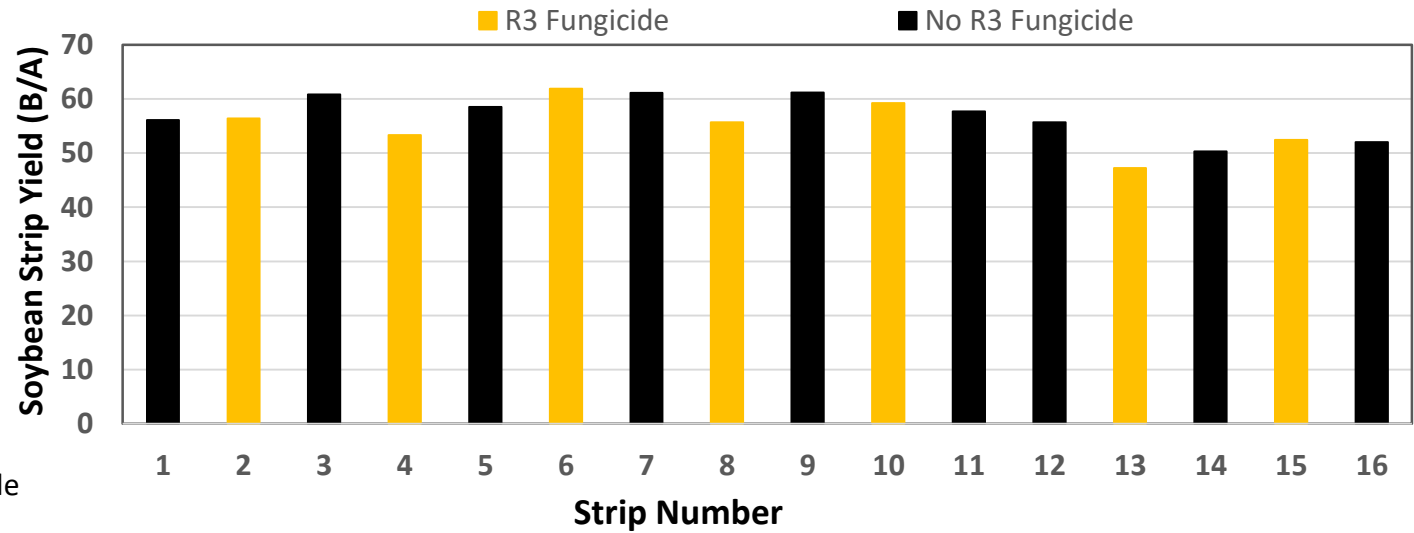
Soybean R3 Fungicide Trial

2019 Site 11

Perry County

Treatments	Mean	Delta Control
	<i>bushels/acre</i>	
All strips	56.2	--
Control (N)	57.2	--
R3 Fungicide (F)	55.3	-1.9

Strip	1	2	3	4	5	6	7	8	9	10	11	12	13	14	15	16
Fung	N	Y	N	Y	N	Y	N	Y	N	Y	N	N	Y	N	Y	N
Yield	56.1	56.4	60.8	53.3	58.5	61.9	61.1	55.7	61.2	59.2	57.7	55.7	47.2	50.3	52.4	52.0



Soybean yield map harvested Sept. 16, 2019. Final strip layout reflects areas of the field not affected by stand issues not related to R3 Fungicide application. Aerial images was taken at 330 feet on August 28, 2019.

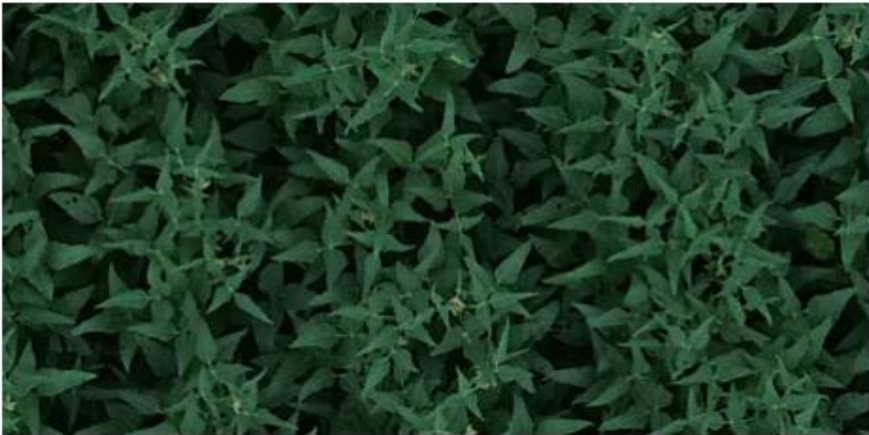
Soybean R3 Fungicide Trial 2019 Site 11 Perry County

July 18, 2019 (Pre-treatment)



August 21, 2019 (Post Treatment)

Control (no R5 Fungicide)

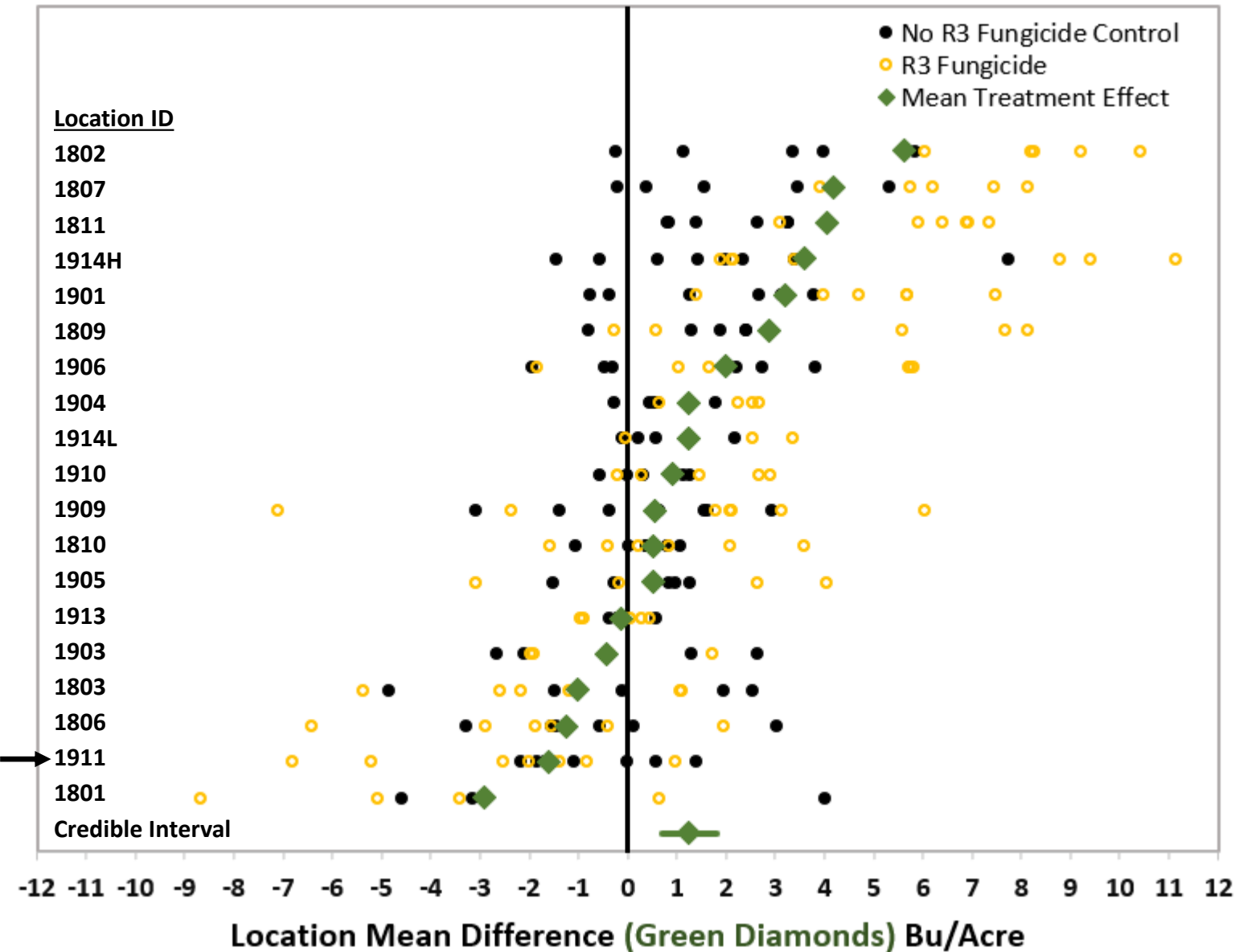


Treated (R5 Fungicide)



High resolution aerial imagery from treated and untreated strips. The top images were taken July 18, 25 days prior to the August 11 R5 fungicide application; the lower images were taken on August 21, 10 days after the fungicide application. Images on the left are from point 31 (untreated) and images on the right are from point 34 (treated) in Fig. 2. Scouting indicated low levels of Septoria and Frogeye at this location.

R3 Fungicide for Soybean: Effect on yield



Key Points:

- Across these 18 farms, R3 fungicide increased yield.
- The benefit was less than 2 bushels per acre.
- There was more than a 50% chance of a one bushel/acre response.
- Results by location suggested significant benefit a five of 18 locations.