

MU Certified Strip Trial Program

2018 Termination Date Trial (Site 3)

Harvest Report

Site Number: 3 (Scott County)

Extension Contact: Anthony Ohmes

Trial Harvest Summary

This is a cover crop trial comparing the effect of yield on cover crop strips that are terminated on two different dates. The first termination date was April 10th, the second termination date was April 27th, and corn was planted on April 30th. The second termination date was 17 days after the first termination date. There was a mean yield difference of -22.1 bushels per acre between the two termination dates, this difference was statistically significant. See Table/Graph 1 for a summary of yield results.

Please note the section towards the end of the report that summarizes management information currently known about the trial. Missing information is highlighted in yellow. Please provide your extension contact the missing information as soon as possible and let us know if any other corrections or changes need to be made.

At the end of the report are two tables summarizing results from all of the cover crop termination date trials for the last three years. Please note that all of the analysis is preliminary.

The MU Strip Trial program will have meetings throughout Missouri in February of 2019. *More information on location and dates will be sent out soon.* We encourage you to attend the strip trial meeting that is closest to you. This will be an opportunity for discussion on what was learned across farms and multiple years of trials. It will also be an opportunity for you to give feedback on how the trial worked on your farm and provide ideas for future trials.

Please follow us on Twitter at @MUStripTrials!

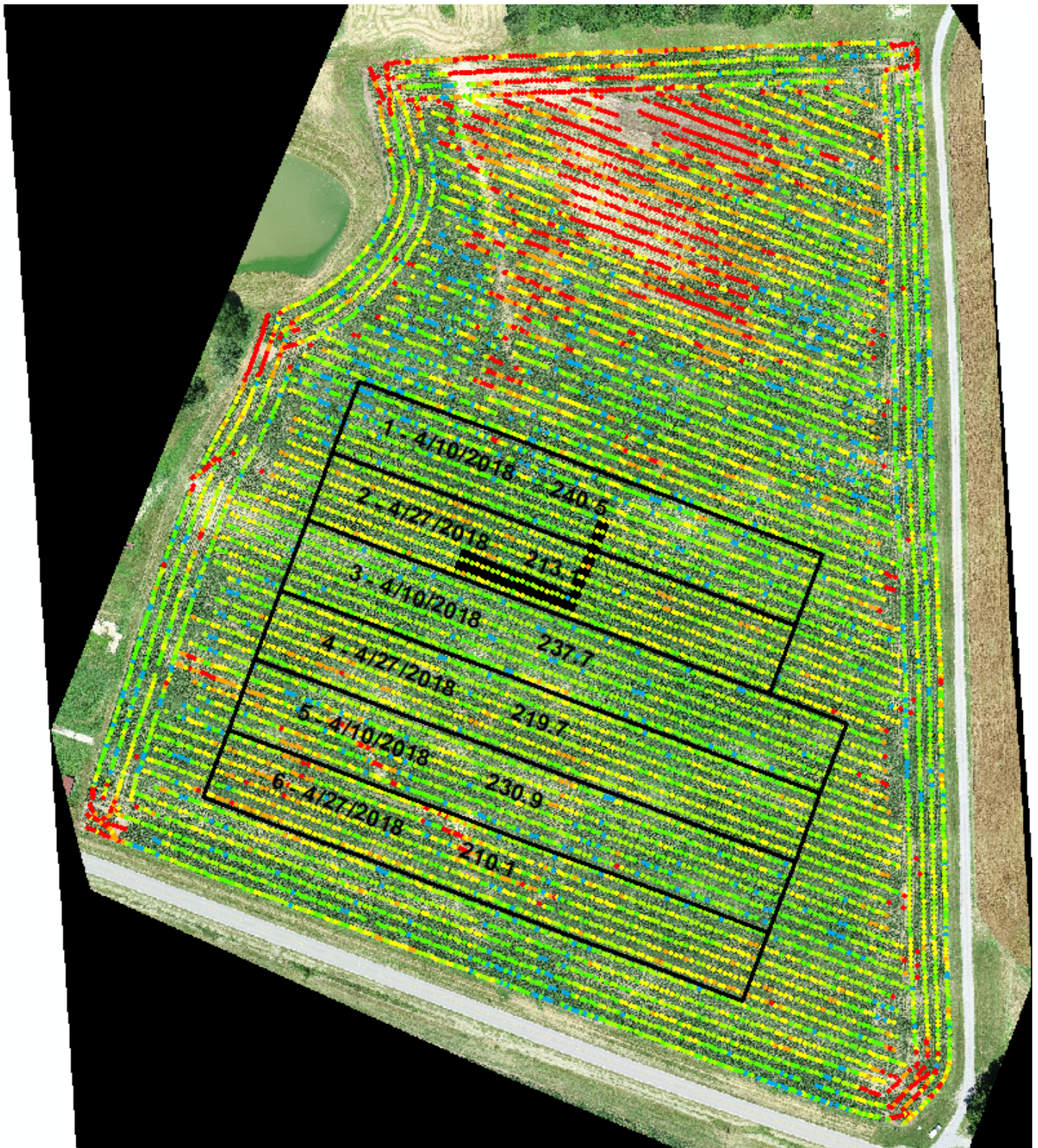
Thank you for agreeing to do this trial! It is one of ten cover crop trials in 2018.

The mission of the MU Certified Strip Trial Program is to help farmers validate management decisions on their farm and document efficiency and environmental stewardship.

The MU Certified Strip Trial Program is funded by:

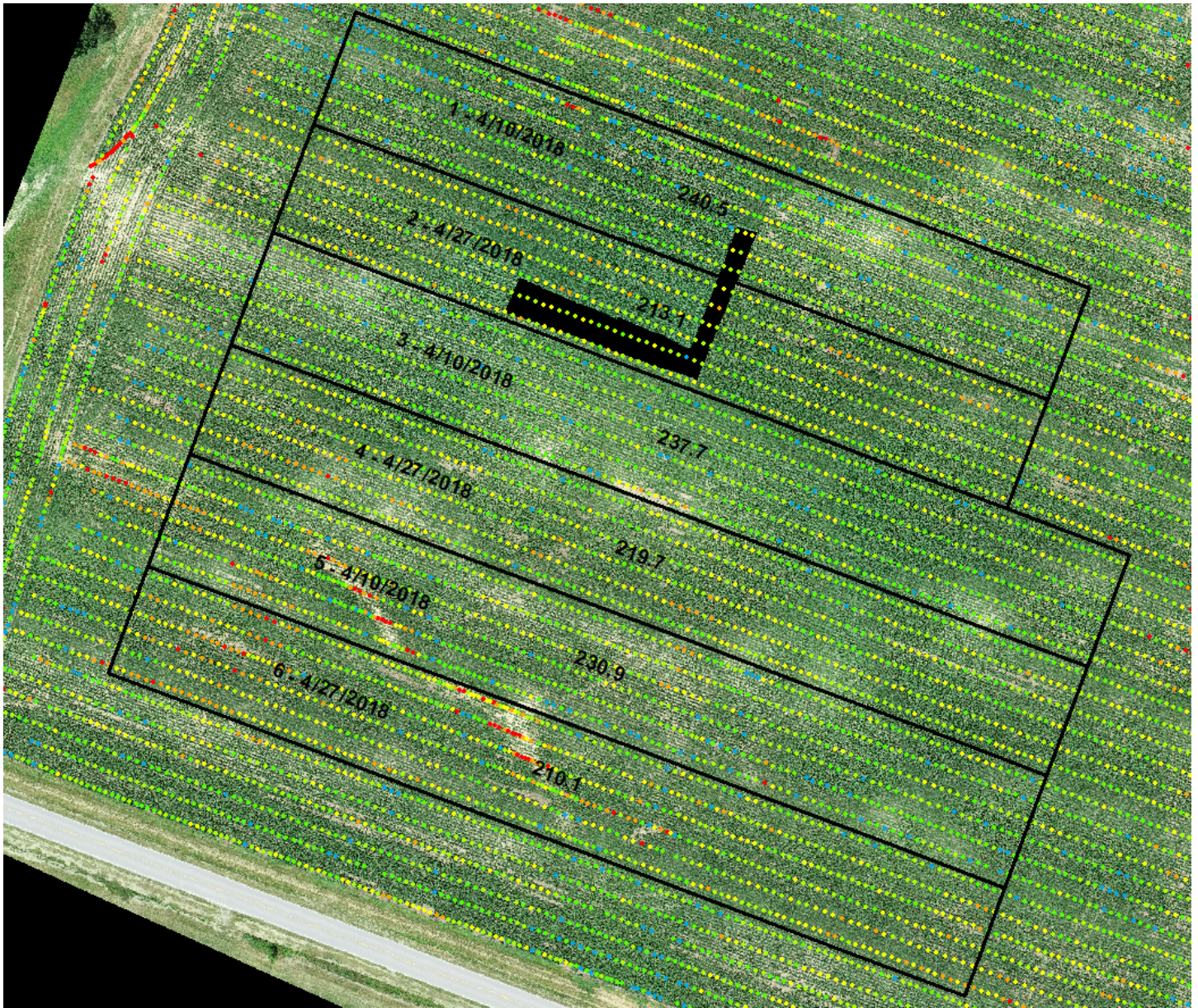
MU Extension, the Missouri Soybean Merchandising Council and the Missouri Corn Merchandising Council.

Page 1 of 5



● < 150 bu/A ● 150 – 180 bu/A ● 180 - 210 bu/A ● 210 – 240 bu/A ● 240 – 270 bu/A ● >270 bu/A

Figure 1a. Whole field showing corn dry yield data reported as bushels per acre (bu/A). Strips are labeled with their mean yield and the date of termination. The field was harvested September 6, 2018.



● < 150 bu/A ● 150 – 180 bu/A ● 180 - 210 bu/A ● 210 – 240 bu/A ● 240 – 270 bu/A ● >270 bu/A

Figure 1b. Close-up of strips showing corn dry yield data reported as bushels per acre (bu/A). Strips are labeled with their mean yield and the date of termination.

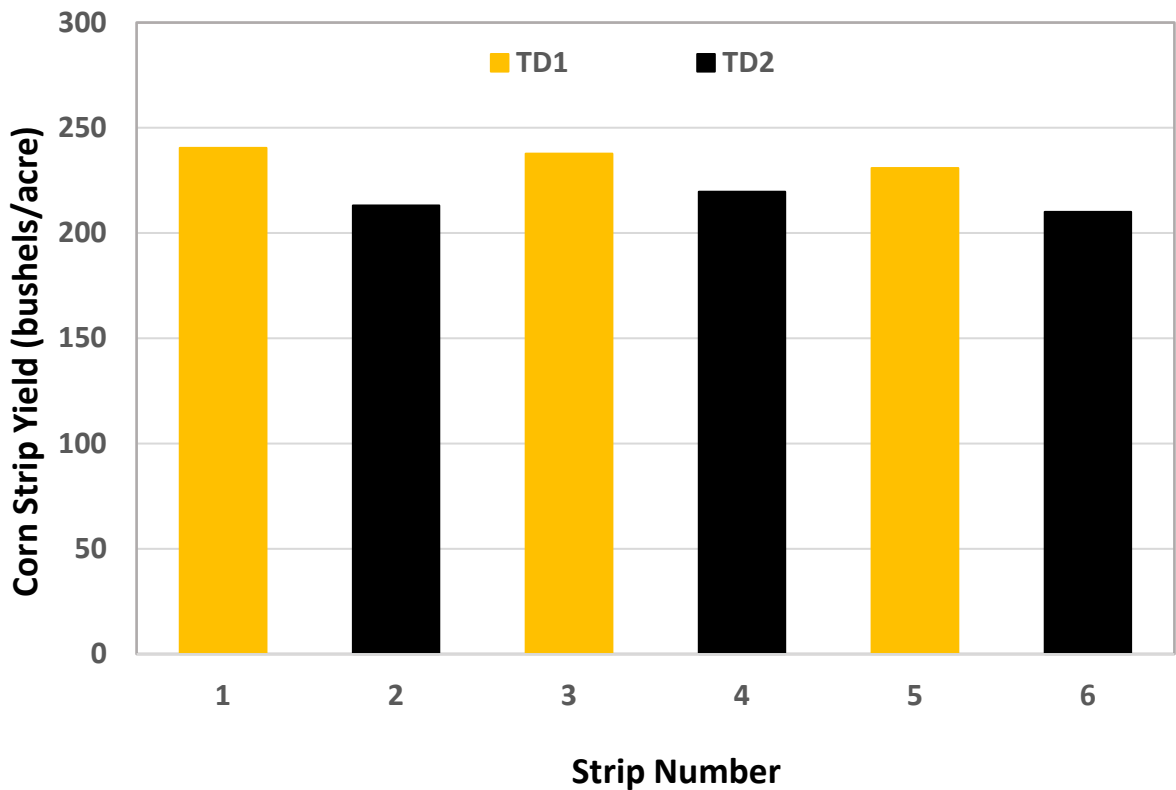
Table 1/Graph 1. Strip means of corn yield.

Mean corn yields:

Mean of all strips: 225.3 bushels/acre
 Termination Date 1 (TD1) 4/10/18 Strips: 236.4 bushels/acre
 Termination Date 2 (TD2) 4/27/18 Strips: 214.3 bushels/acre
 Treatment difference: -22.1 bushels/acre

Preliminary analysis shows that this difference was statistically significant.

Strip	1	2	3	4	5	6
Treatment	TD1	TD2	TD1	TD2	TD1	TD2
Yield (Bushels/Acre)	240.5	213.1	237.7	219.7	230.9	210.1



Cover Crop Management Information

	Termination Date 1	Termination Date 2
Cover crop	Barley, Rape, Crimson Clover, Winter Peas	Barley, Rape, Crimson Clover, Winter Peas
Planting date	10/4/2017	10/4/2017
Seeding rate	40 lbs/1 lb/5 lbs/10 lbs per acre	40 lbs/1 lb/5 lbs/10 lbs per acre
Termination date (TD)	4/10/2018	4/27/2018
Height/stage at termination	10 inches, vegetative	24-30 inches, reproductive
Herbicides applied	Buccaneer 1 quarts/acre 2,4-d 1 pint/acre Leadoff 1 ½ ounces/acre	Buccaneer 1 quarts/acre 2,4-d 1 pint/acre Leadoff 1 ½ ounces/acre
Herbicide extent	TD 1 Strips only	

Grain Crop Management Information

Planting Date	Variety	Seeding Rate	Harvest Date
4/30/2018	Agrigold 6499	30,000	9/6/2018
Crop Rotation	Corn, 1/2 bean, 1/2 pasture		
Tillage System	No Till		

Equipment Specifics

Equipment	Type	Width (in feet)
Planter	International 1225	30
Sprayer	Apache AS 720	90
Combine	JD 9570	15
Yield Monitor	JD 3000	