

SOYBEAN GROWTH MONITORING

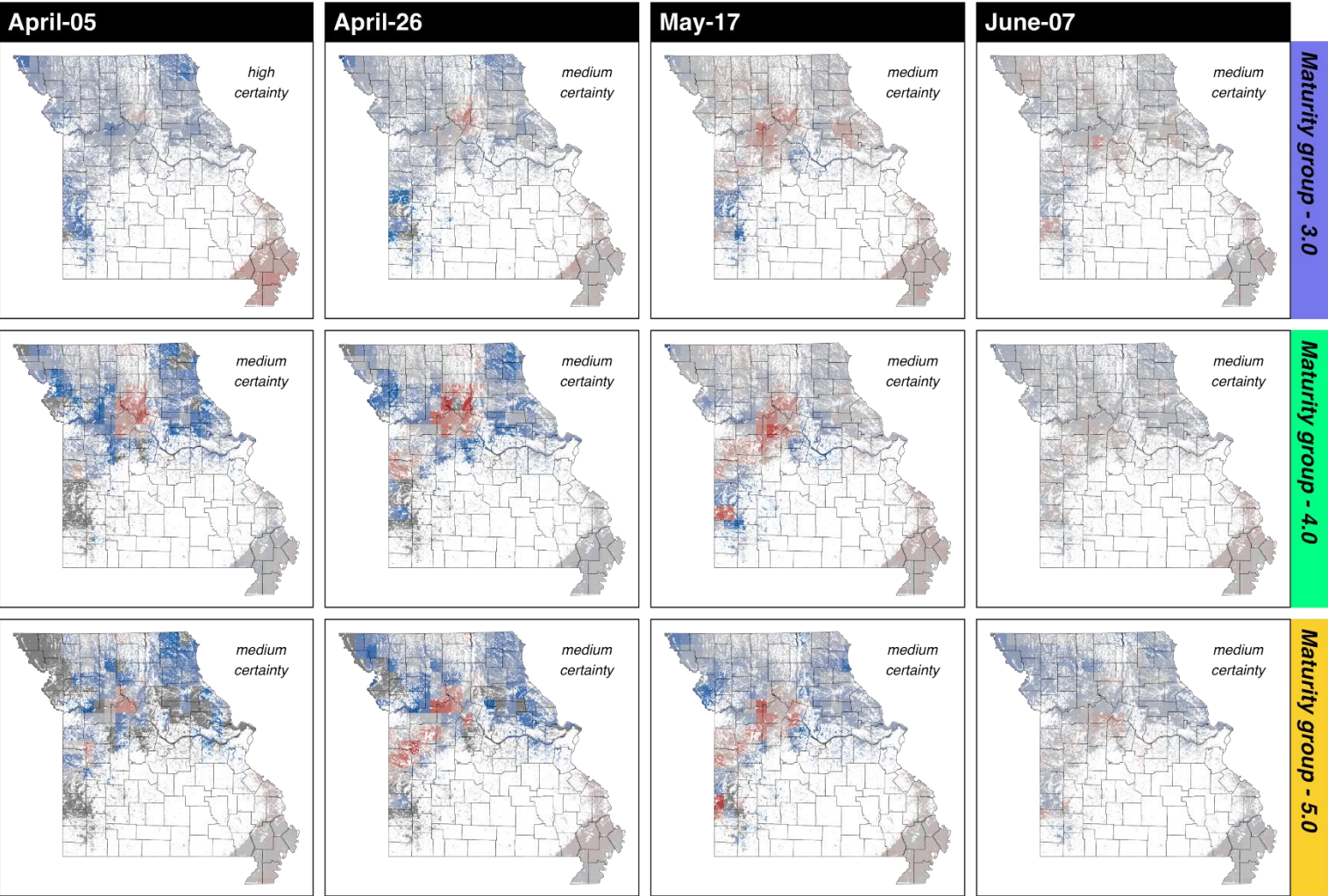
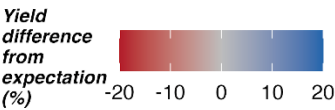


July 31st to August 14th

- The relatively wet July in the Northeast, Northwest, and part of Central Missouri has maintained a favorable water content in the soils and has kept yield predictions in line or above the normal yield average. Only a few locations in Central and Southwest are depicting an expected yield lower than expected
- Most soybean scenarios across the state are entering or have entered the seed-filling stage. The heatwave of the past two weeks hasn't significantly affected the yield forecast.
- However, soil available water has decreased across the whole state, and rainfall is needed in the next two weeks to meet crop water demand during the seed filling stage.
- The hot and dry conditions in the Bootheel have led to increased irrigation recommendations throughout the region.

Prediction of Yield as of Aug-03-2025

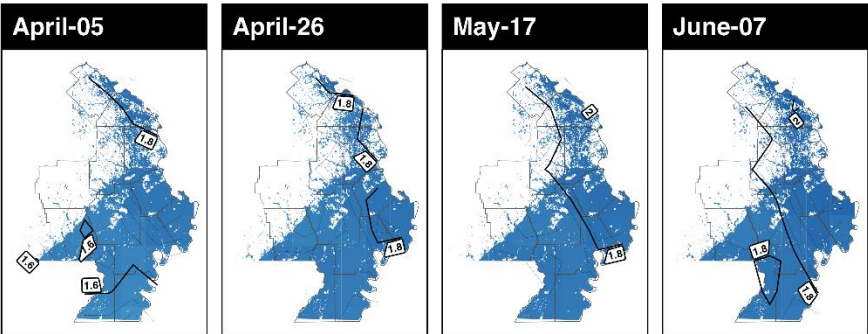
Planting dates:



2025 Soybean Yield Forecast for Missouri
Yield is shown as a deviation from the normal expected yield for each of the 12 combinations of planting date (columns) and cultivar maturity group (rows). Blue indicates scenarios with expected yields above normal, red indicates below-normal yields due to the onset of adverse weather conditions, and gray represents yields close to the expected average. Note: yield deviations are relative to the normal expected yield for each specific scenario and are not directly comparable across scenarios

Forecast of the required irrigation from Jul-31 to Aug-15

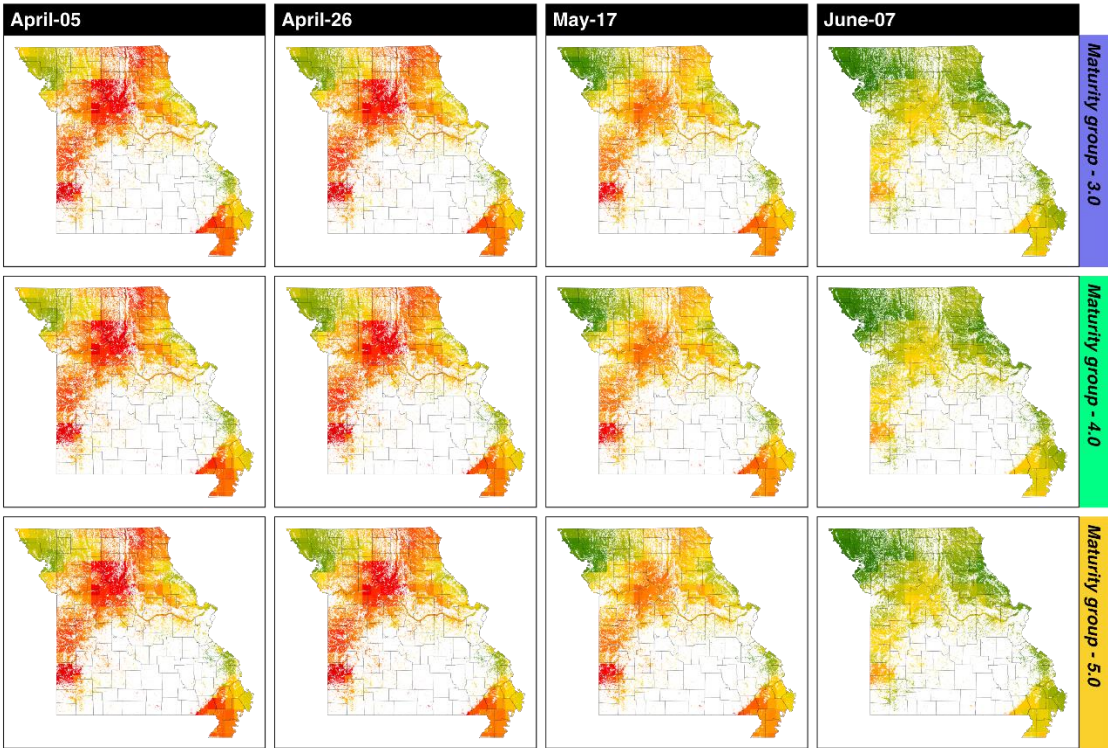
Planting dates



Irrigation requirement (in inches) for the Southeast region during the upcoming forecast period (7 to 14 days).

Soil Water Content as Proxy of Drought

Planting dates:



Drought is shown as the relative soil water content compared to its maximum water storage (field capacity). Soils at 100% (green) are fully replenished. Warm colors indicate drier conditions.

Phenology and Development

		April-05			April-26			May-17			June-07		
		Stage	Node	Harvest	Stage	Node	Harvest	Stage	Node	Harvest	Stage	Node	Harvest
MG 3.0	CE	R5	20	Sep-03	R5	20	Sep-09	R5	17	Sep-17	R3	13	Sep-26
	NE	R5	21	Sep-08	R5	20	Sep-13	R5	17	Sep-20	R3	13	Sep-29
	NW	R5	21	Sep-08	R5	19	Sep-14	R5	16	Sep-21	R3	12	Sep-29
	SE	R5	18	Aug-20	R5	19	Aug-30	R5	18	Sep-10	R3	13	Sep-21
	SW	R5	19	Aug-29	R5	20	Sep-05	R5	17	Sep-14	R3	13	Sep-24
MG 4.0	CE	R5	22	Sep-19	R5	20	Sep-23	R3	17	Sep-30	R1	13	Oct-08
	NE	R5	22	Sep-24	R3	20	Sep-28	R3	17	Oct-05	R1	13	Oct-11
	NW	R5	22	Sep-25	R3	20	Sep-29	R3	16	Oct-05	R1	12	Oct-12
	SE	R5	23	Sep-07	R5	22	Sep-14	R5	18	Sep-23	R3	13	Oct-02
	SW	R5	23	Sep-14	R5	20	Sep-20	R3	17	Sep-27	R1	13	Oct-05
MG 5.0	CE	R3	20	Oct-02	R3	20	Oct-06	R1	17	Oct-12	R1	13	Oct-19
	NE	R3	21	Oct-08	R1	20	Oct-12	R1	17	Oct-18	V	13	Oct-24
	NW	R3	21	Oct-09	R1	20	Oct-12	R1	16	Oct-18	V	12	Oct-24
	SE	R5	16	Sep-21	R5	18	Sep-27	R3	18	Oct-05	R1	13	Oct-13
	SW	R5	18	Sep-28	R3	19	Oct-02	R1	17	Oct-08	R1	13	Oct-15