



Skill-a-Thon

Rabbit Skeleton Parts Identification

Supplies Needed

Picture of rabbit skeleton, paper, pens

Note: See Rabbit Level 3, *All Ears*, pg. 6

Source: *National 4-H Rabbit Curriculum*

Situation

You are supplying rabbits and providing education about rabbits at the town festival petting zoo. To help educate others about rabbits, handling, producing and care, you feel that it is important to know the parts of a rabbit.

Task

Correctly identify the parts of a rabbit

Directions

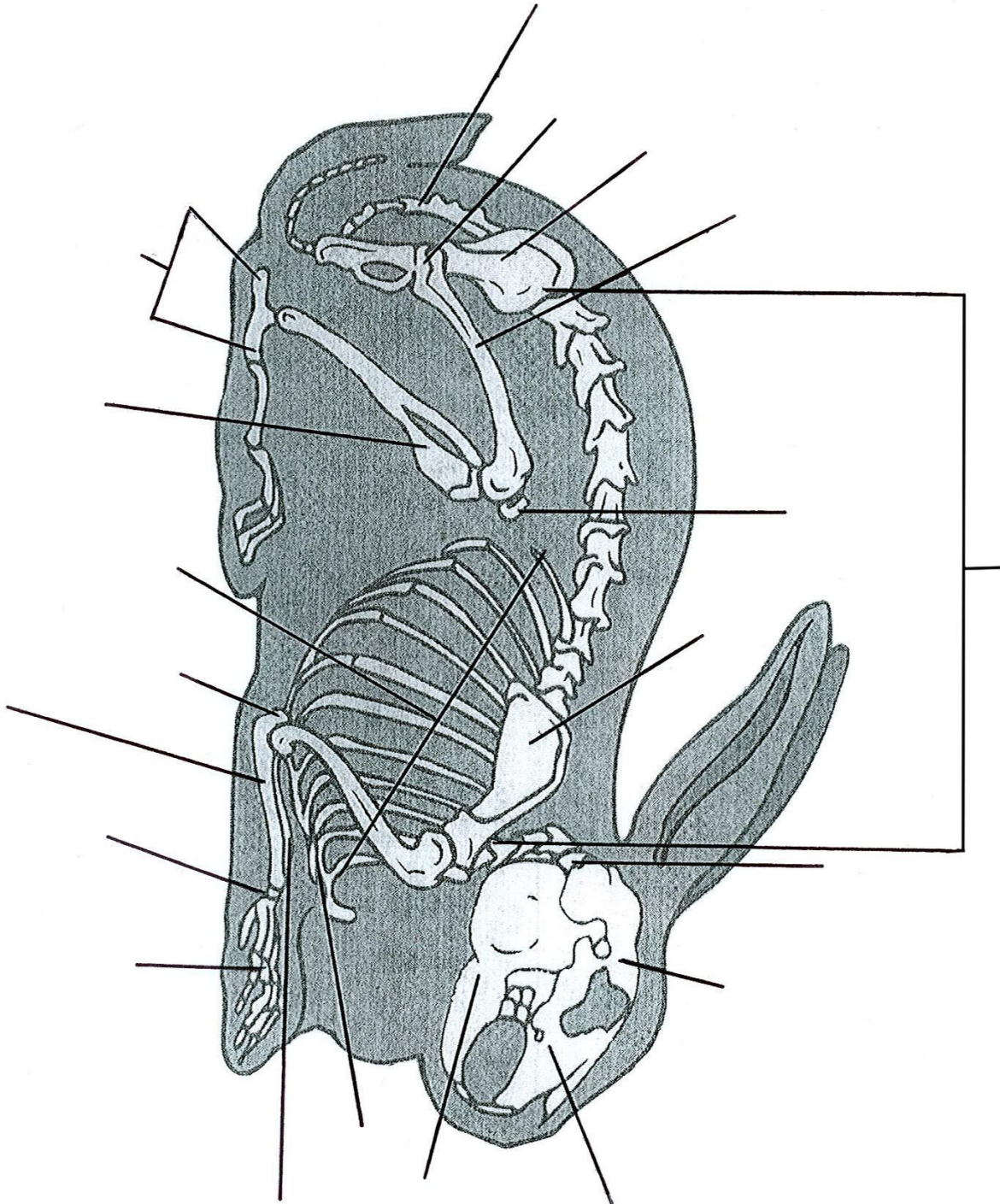
Write down the correct rabbit parts

Or

With the use of sewing pins label the parts of the stuffed rabbit



Rabbit Skeleton



Flash Cards

| | | | |
|------------------|--------------------|-----------|------------|
| Caudal Vertebrae | Cervical Vertebrae | Elbow | Femur |
| Hip Joint | Mandible | Maxilla | Metatarsus |
| Patella | Pelvis | Phalanges | Radius |
| Ribs | Scapula | Skull | Spine |
| Sternum | Tarsus | Tibia | Ulna |

Answer Key

