



Skill-a-Thon

Poultry

Inside an Egg

Supplies Needed

Egg parts illustration with matching cards.

To view an egg: Egg candler (commercial candler or bright flashlight bulb in a box with a 1 inch hole), eggs (refrigerated and non-refrigerated 3-4 days)

Situation

You would like to participate in Poultry Day and will need to know the parts of an egg and how to candle an egg.

Task

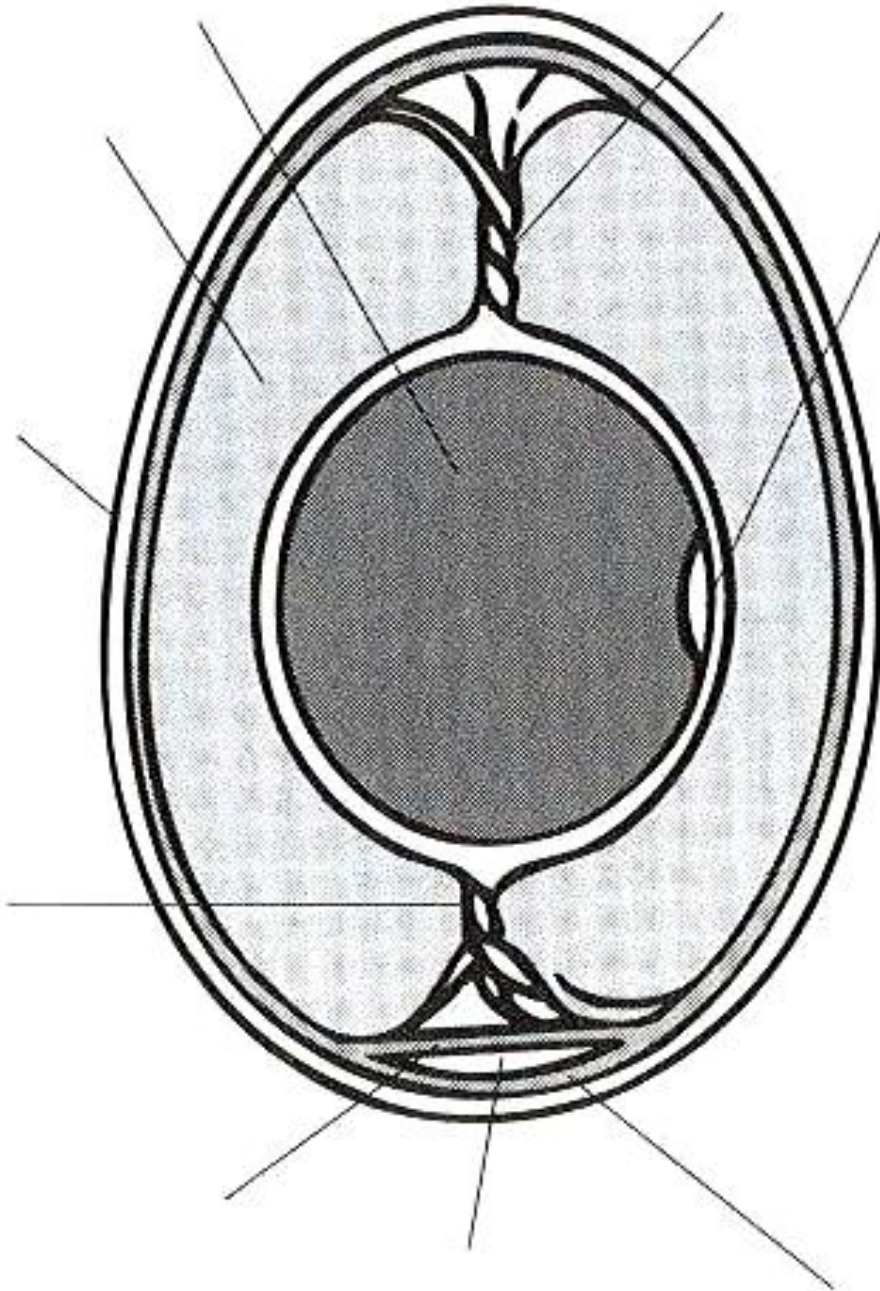
Identify the parts of an egg.

Directions

Identify the parts of the egg using the illustration. Then use the candler to view the parts of the egg.



Inside an egg



Rev 7/08 DD

Flash Cards for Matching

Germinal spot	Chalaza
Outer membrane	Yolk
Albumen	Shell
Chalaza	Inner membrane
Air cell	



Answer Key

