



Skill-a-Thon

Entomology

Insect Pinning

Supplies Needed

Real insects, insect pins, pinning blocks, and labels

Note: *with younger members you may want to have the answer key out for extra help.*

Situation

You have gathered insects for your collection and now you need to start pinning and labeling them to put in your insect box.

Task

Correctly pin and label an insect for your collection.

Directions

➤ Provide the following information on the labels provided:

Label 1

- Common Name

Label 2 Collection information

- Location where insect was found
- Date
- Name of collector

Fayette			Co.
KY.	21	Jun.	19
Coll.	John Doe		

COMMON NAME
<i>Ladybird Beetle</i>

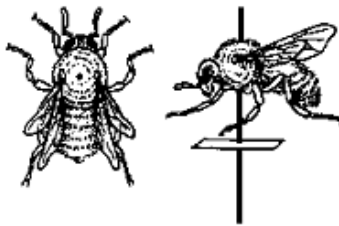
➤ With the use of an insect pinning block properly pin the insect and the labels to add to your collection.



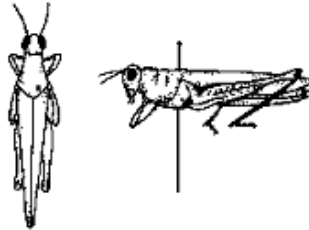
Insect Labels

Answer Key

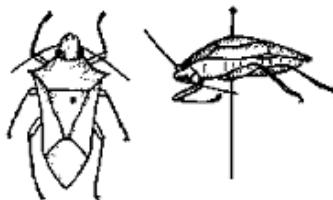
- Pin bees, wasps, flies, dragonflies and other insects with similar wings through the thorax between the bases of the wings.



- Pin true bugs through the right corner of the "scutellum." The scutellum is a triangular area with the point of the triangle pointing to the rear. In stink bugs the scutellum is large, but in other bugs it may be quite small.



- Pin beetles to the right of the center line so that the pin emerges from the underside of the insect between the middle and hind legs of the right side. Do not pin so far back that the pin comes through the abdomen.



- Pin grasshoppers so that the pin emerges between the middle and hind legs of the right side. Insert the pin near the right hind margin of the "pronotum." The pronotum is the saddle-shaped structure of the thorax just behind the head.

