



Skill-a-Thon

Agronomy

Grain Pests

Supplies Needed

Picture of insects or real insects, insect name flashcards.

Note: See Missouri Soybean Handbook, pg. 40 (reference guide sheets also)

Situation

You want to spray pesticide on your crops, but aren't sure which kind of pest is attacking your field.

Task

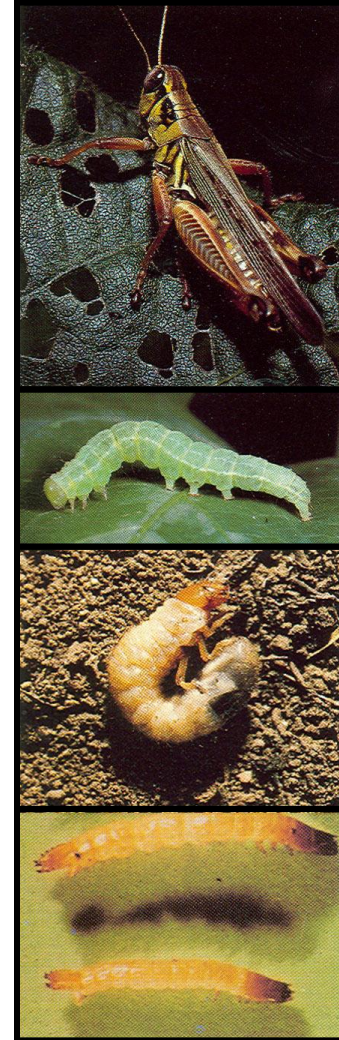
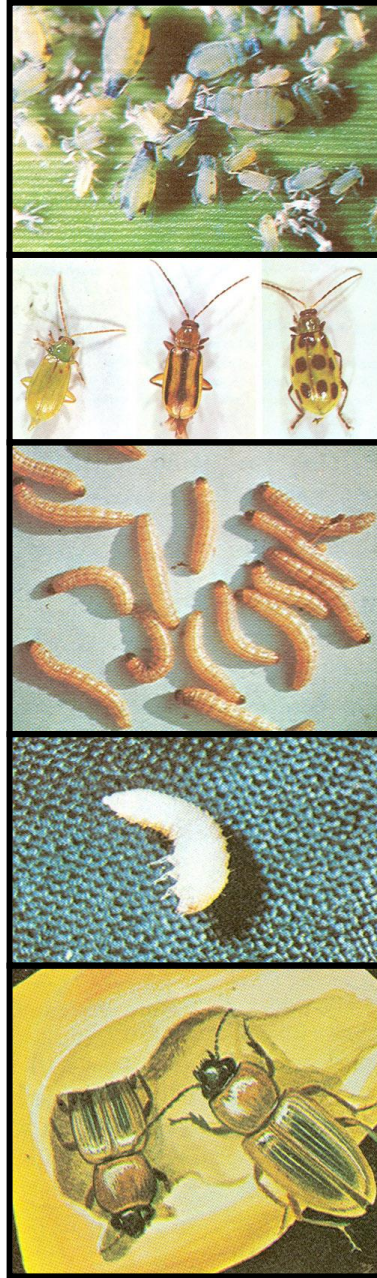
Correctly identify these common grain pests

Directions

Match the name of the pest with the correct photo or pest provided.



Pictures of Grain Pests






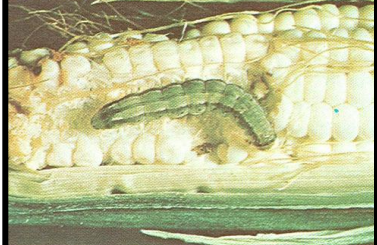

Flash Cards





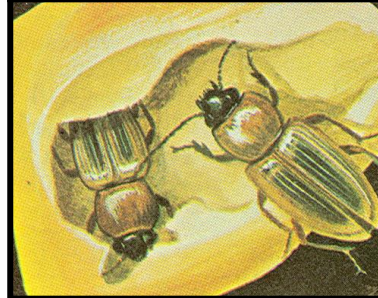
Grasshopper	Seed Corn Beetle	Grape Colaspis	Corn Flea Beetle	Green Clover Worm	European Corn Borer	White Grub
Wireworm	Armyworm	Chinch Bug	Black Cutworm	Corn Leaf Aphid	Corn Earworm	Corn Root Beetles







Answer Key

(Answer to the right of each Grain Pest)

	Armyworm
	Black Cutworm
	Chinch Bug
	Corn Earworm
	Corn Flea Beetle

	Corn Leaf Aphid
	Corn Root Beetles
	European Corn Borer
	Grape Colaspis
	Seed Corn Beetle

	Grasshopper
	Green Clover Worm
	White Grub
	Wireworm

