

THRIVE



2022 ANNUAL REPORT



MISSOURI 4-H
FOUNDATION

BOARD OF TRUSTEES

The Missouri 4-H Foundation Board of Trustees is a group of business and community leaders from across the state. These dedicated volunteers lead the effort to give focus and vision to the Missouri 4-H Foundation, support projects, and represent the Missouri 4-H Foundation to their communities.

Kelli Jo Buettner

Chair
VP Scored Lending & Credit
Operations
FCS Financial
Callaway County

Earl Niemeyer

Vice Chair
Senior Vice President
Community State Bank of Bowling
Green
Pike County

Doug Kueker

Treasurer
Co-Founder and Director of
Learning Services
Vivayic
Miller County

Joan Hickman

Secretary
Retired
University of Missouri Extension
Buchanana County

Baylee Asbury

Director of Outreach and Education
Missouri Soybean Association
Cole County

David Baker

Assistant Dean Emeritus and
Associate Professor Emeritus
University of Missouri College of
Agriculture, Food and Natural
Resources
Boone County

Mark Cadle

Retired
Missouri Farm Service Agency
Worth County

Lupita Fabregas*

Director
MU Extension 4-H Center for Youth
Development
Boone County

Joan Fahrmeier

Owner
Fahrmeier Family Farms & Vineyard
Lafayette County

Clark Fobian, DVM

Retired Veterinarian
Pettis County

Mark Goth

Crop Science Finance
Transformation Lead
Bayer
St. Charles County

Wendy Hall

Vice President, Team Leader
FCS Financial
Clay County

Breanne Harmon

Agriculture Education Teacher
Salisbury High School
Chariton County

Dana Haynes

Retired
University of Missouri College of
Agriculture, Food and Natural
Resources
St. Charles County

Chad Higgins*

Interim Vice Chancellor
University of Missouri Extension
and Engagement
Boone County

Robert Idel

Retired
FCS Financial
Gasconade County

Kyle Kerns

CFO and Operations Lead
Cultivation Capital
St. Louis County

Wendy Loges

Marketing Director & Business
Development Officer
BTC Bank
Saline County

Brad McCord

Natural Resource Specialist, State
Outreach Coordinator
USDA-NRCS
Moniteau County

Don Nikodim

Executive Director
Missouri Pork Association
Boone County

Ruth Pirch

Retired
University of Missouri Extension
Jackson County

Jennifer Poindexter

Director of Promotion and Education
Missouri Farm Bureau
Cole County

Travis Scott

Development Officer
Rocky Mountain Elk Foundation
Boone County

Christine Tew

Marketing Communications Manager
Valent USA
Cole County

Marla Tobin, MD

Consultant and Retired Family
Physician
Dr. T's Medical Services PC
Johnson County

Ernie Verslues

President and CEO
MFA, Inc.
Boone County

*Ex Officio, Non-Voting Member

MAE4-HYW Representatives*

Emily Bergseiker, Lafayette County
Rhonda Shafer, Lincoln County

State 4-H Council Representatives*

Gracen James, Cape Girardeau County
Anna Loucks, St. Louis County

MESSAGE FROM OUR CHAIR

What a year! While the world around us felt uncertain at times, Missouri 4-H persevered, continually seeking innovative ways to reach more youth. In 2022, dedicated staff and over 7,000 volunteers worked together to provide leadership and support to more than 56,000 youth across the state of Missouri, an increase of more than 20 percent from the prior year!

Likewise, the Missouri 4-H Foundation centered its focus on stewardship to increase resources to support 4-H programming today and tomorrow. We reorganized committees and established new goals to better identify and reach potential donors. We partnered with MU Extension Advancement to launch the MU Land-Grant Society, a giving society aimed at celebrating significant contributors. And, despite challenging economic conditions, we raised over \$1.1 million in support of the University of Missouri Extension 4-H Center for Youth Development through continued partnerships with 4-H alumni, corporate partners, and friends. By hosting another record-breaking golf tournament and working with several counties to establish endowments, we grew support for 4-H at both the state and local levels.

We have a vision for tomorrow, and we are dreaming big and working hard to get there. Stone by stone, the Missouri 4-H Foundation aims to build a stronger bridge to a better tomorrow for young people in our state. We're committed to providing a sustainable foundation to support Missouri's youth doing incredible things now and into the future.



Kelli Jo Buettner

Kelli Jo Buettner

MISSOURI 4-H FOUNDATION CHAIR



WHO WE ARE

The Missouri 4-H Foundation is a nonprofit 501(c)(3) organization. We are the independent resource partner of the University of Missouri Extension 4-H Center for Youth Development.

WHAT WE DO

Through the generous support of individuals and organizations, we offer college scholarships to current or former 4-H members; funding for county 4-H programs and statewide 4-H activities; training and recognition for 4-H volunteers; and seed money for new and expanded 4-H programs.

HOW YOU CAN HELP

Support the Clover Fund. Gifts to the Missouri 4-H Foundation's Clover Fund provide the vital flexibility to support our greatest needs and help us reach young people in every county.

Create an Endowment. Endowments provide enduring support for 4-H programs, counties, college scholarships and the greatest needs or Missouri 4-H as they arise.

Leave a Legacy. Support the future of Missouri 4-H members by including the Missouri 4-H Foundation in your estate plans.

4-H MEMBERSHIP

Membership enrollment



56,504 **7,462**

YOUTH
enrolled in
Missouri 4-H.

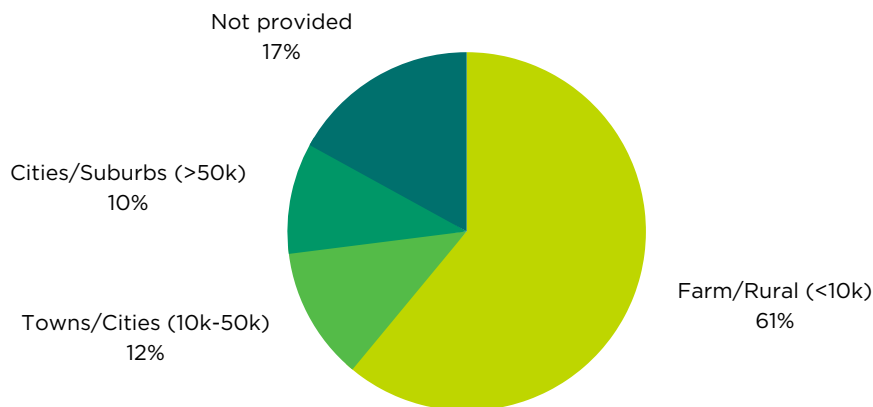
VOLUNTEERS
supporting and
mentoring them.

Where do they enroll?

Special Interest	11,938
Total Short-term Programs	11,938
Military Clubs	140
Community Clubs	14,479
In-school Clubs	1,212
Afterschool Clubs	1,991
Total Clubs	17,822
School enrichment	24,655
Family learning	164
Afterschool Programming	2,605



Where do they live?



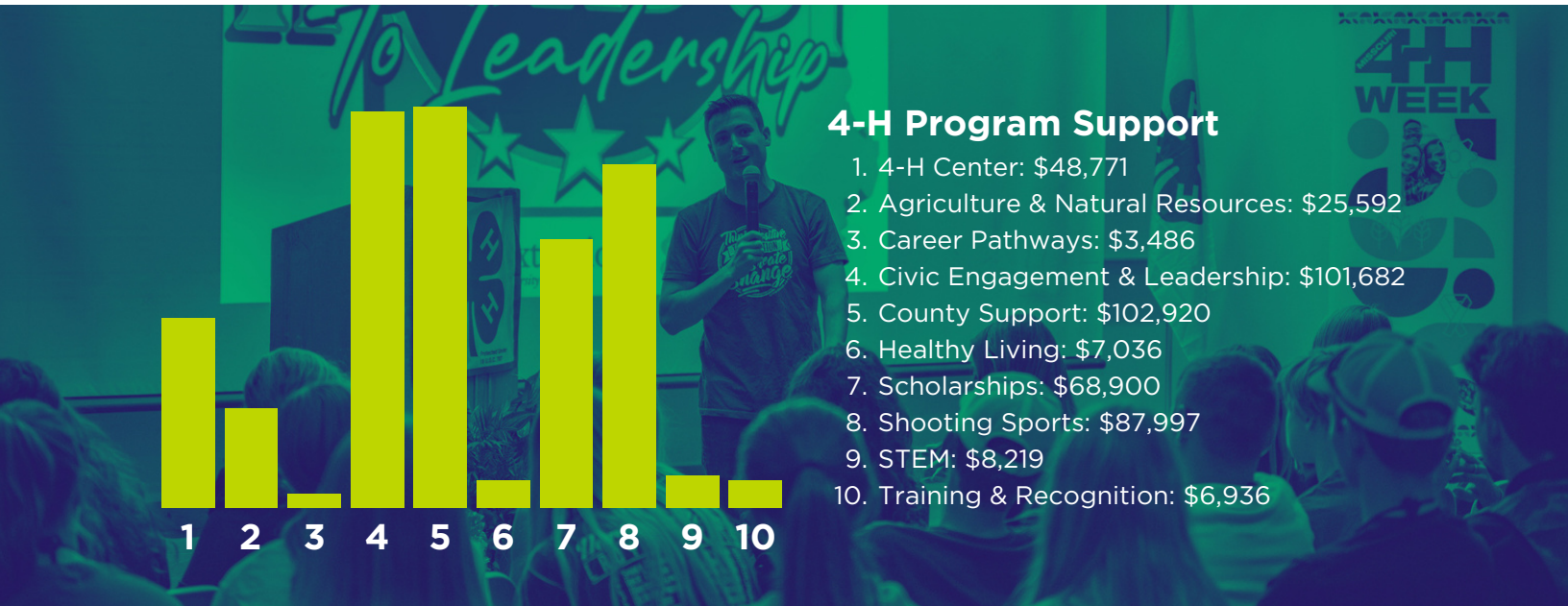
What is their ethnicity/race?

American Indian/Alaskan Native	0.8%
Asian	0.6%
Black or African American	4.9%
Hispanic/Latinx	13.3%
Native Hawaiian/Pacific Islander	0.3%
White	71.9%
More than one race	3.8%
Undetermined	17.7%



YOUR SUPPORT AT WORK

In Fiscal Year 2022 (July 1, 2021 - June 30, 2022) the Missouri 4-H Foundation provided more than \$460,000 to support young people and the work of Missouri 4-H.



4-H Center for Youth Development

The 4-H Center for Youth Development is Missouri's state 4-H office. It houses the faculty, staff, and students who support the county 4-H programs.

Agriculture & Natural Resources

Missouri 4-H members are excelling to be more confident, educated consumers of agricultural information and products. They are exploring their interests in natural resources and engaging in environmental stewardship.

Career Pathways

Youth begin exploring careers they might enjoy at an early age and practicing the soft skills needed in the workplace.

Civic Engagement & Leadership

Missouri 4-H grows well informed citizens who are confident leaders, actively engaged in solving issues in their communities. By helping young leaders find their spark, 4-H is honing life skills that will help them thrive.

County 4-H Programs

Through the generosity of our donors, the Missouri 4-H Foundation is able to provide funding that is designed to grow 4-H audiences at the local level, benefiting communities across the state.

Healthy Living

4-H Healthy Living programs help empower youth to be healthy, body and mind, with the skills to make healthy decisions and lead healthy lifestyles.

College Scholarships

Connecting youth to higher education is a fundamental role of the 4-H program. The Missouri 4-H Foundation offers more than 60 college scholarships to young people of all backgrounds.

Shooting Sports

4-H Shooting Sports programs use the skills and disciplines of hunting and shooting to assist young people in developing important life skills.

STEM

Missouri 4-H'ers are leading the way in their communities by cultivating the knowledge and skills needed in technical areas and empowering others to do the same.

Training & Recognition

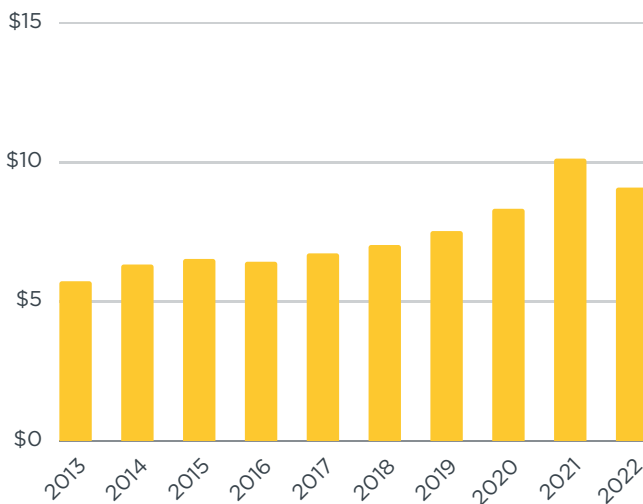
A first step in building self confidence is acknowledging 4-H members for their involvement in educational experiences. We offer clubs and counties many ways to recognize participation by 4-H members and volunteers.

ENDOWMENT OVERVIEW

Over the years, growth of our endowment through investment return and charitable giving has enabled us to support the Missouri 4-H mission to engage youth as valued contributing members of their communities. As of June 30, 2022, the Missouri 4-H Foundation's endowment was comprised of 90 individual funds totaling approximately \$9.06 million.

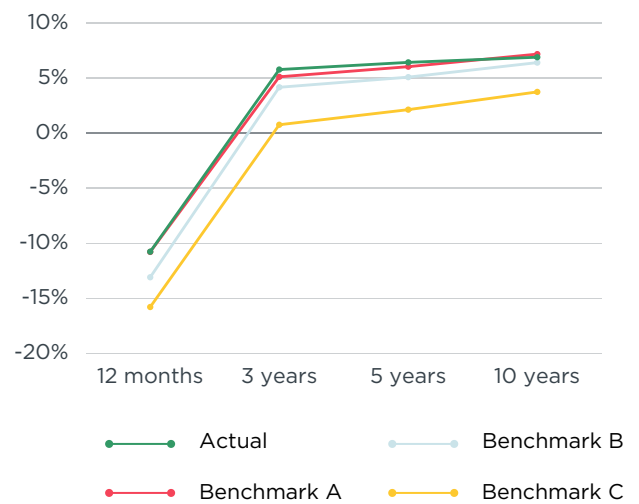
10-Year Endowment Values

(In millions)



10-Year Annualized Returns

(As of June 30, 2022)

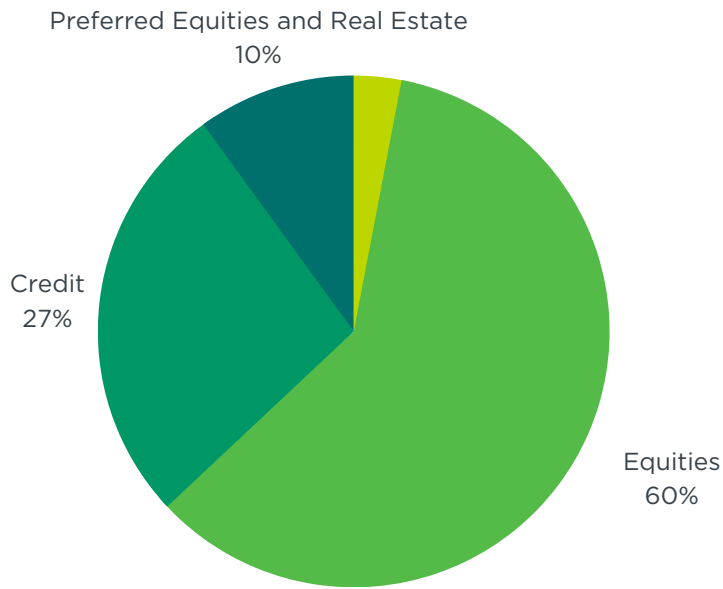


Performance

The Missouri 4-H Foundation Seeks to achieve an annualized rate of return of at least 5.0% net of fees to fund spending and allow for growth of the endowment after considering effects of inflation. The benchmark is applied over the long term due to the volatility of short-term periods.

Additional long-term benchmarks for Board Designated endowment funds are composites of the following indexes:

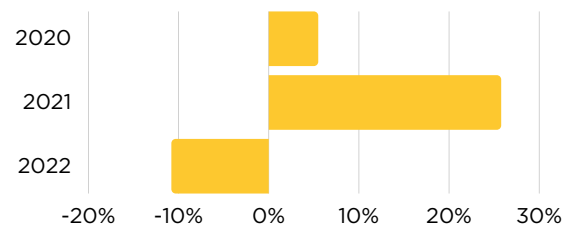
- Benchmark A: 45% S&P 1500; 15% MSCI All Country World ex U.S. Index; 35% Bloomberg Barclays Intermediate Govt./Credit Index; 5% 90-Day T-bill.
- Benchmark B: Median performance of foundations and endowments under \$50 million according to investment metrics data.
- Benchmark C: 60% MSCI All Country World Index; 40% Bloomberg Barclays U.S. Aggregate Index.



Investment Policy Targets

- 3% Money market funds and short-term treasury bonds
- 60% Equity (domestic and international)
- 27% Credit (investment-grade, assets backed securities, and high yield)
- 10% Preferred equities and real estate

1-Year Returns at June 30 Each Year



Spending

The Missouri 4-H Foundation employs spending and investment policies designed to provide a predictable and stable stream of income to support Missouri 4-H while ensuring the real value (defined as purchasing power) of the endowment does not decline over the long term.

The spending policy is approved by the Board of Trustees and includes two types of funds:

- **Endowed Funds:** Endowed funds include Board Designated (unrestricted) and Donor Restricted Funds. Authorized expenditures during the foundation's fiscal year (ending June 30) shall be no less than 4.00% and no more than 6.00% of the average fair market value of the endowment for the trailing three-year period ending December 31.
- **Non-Endowed Funds:** Quasi-Restricted Funds are non-endowed funds, however, they are long-term investments and are expected to remain intact for a minimum of five years, after which the income and principal may be spent. Accordingly, all withdrawals of the income and principal are subject to approval by the foundation's Board of Trustees.

Purpose	# Funds	% Pool
County Programs	6	7%
Scholarships	38	19%
State Programs	29	20%
Unrestricted	14	53%
Other (Annuities)	3	1%
Total	90	100%

STATEMENT OF ASSETS, LIABILITIES, AND NET ASSETS - MODIFIED CASH BASIS - FOR THE YEARS ENDED JUNE 30, 2022 AND 2021.

Assets	2022	2021
Cash	172,020	141,732
Investments	9,204,001	10,308,635
Cash Value of Life Insurance	10,519	9,954
Total Assets	9,386,540	10,460,321

Liabilities	2022	2021
Annuity Obligations	10,069	11,925
Total Liabilities	10,069	11,925

Net Assets	2022	2021
Program Designated	4,727,710	5,068,240
Board Designated	3,577,957	4,309,352
Donor Restricted	1,070,804	1,070,804
Total Net Assets	9,376,471	10,448,396

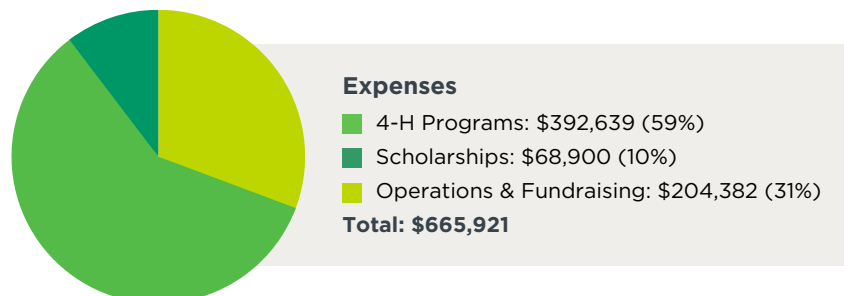


STATEMENT OF REVENUES, EXPENSES, AND CHANGE IN NET ASSETS - MODIFIED CASH BASIS - FOR THE YEARS ENDED JUNE 30, 2022 AND 2021.

Revenues	2022	2021
Net sales of calendars	725	(10,509)
Contributions	681,542	536,970
Fees	28,563	59,664
Investment income net of management fees	160,825	163,658
Net realized and unrealized gains (losses) on investments	(1,274,953)	1,924,673
Total Revenues	(403,298)	2,674,456

Expenses	2022	2021
Program	461,539	376,959
General and administrative	132,587	116,282
Fundraising	71,795	60,866
Payments to beneficiaries	2,706	2,706
Total Expenses	668,627	556,813

Change in net assets	(1,071,925)	2,117,643
Net assets, beginning of year	10,448,396	8,330,753
Net assets, end of year	9,376,471	10,448,396



HONOR ROLL

Our work is made possible by the generous contributions of individuals and organizations. The following donors made gifts to the Missouri 4-H Foundation between July 1, 2021 and June 30, 2022.

EMERALD CLOVER

\$10,000 AND UP

Callaway County 4-H Council
Bill E. Carter
Dade County 4-H Council
FCS Financial
Great American Insurance
Healthy Blue
Henry County 4-H Council
MFA Foundation
Miller Family Foundation Inc.
Missouri Friends of NRA
Orscheln Industries Foundation
Pike County 4-H Council
St. Charles County Extension Council
The Climate FieldView Corporation
The Goppert Foundation
The NRA Foundation, Inc.

PLATINUM CLOVER

\$5,000 - \$9,999

3M Foundation
Association of Missouri Electric Coops
Casey Richelle Becker
Charities Aid Foundation of America
Mary Camille Davis
Greater St. Louis Community Foundation
Memorial Baptist Church
MidwayUSA Foundation
Missouri Corn Merchandising Council
Missouri Pork Producers Association
Carl E. Olson and Diane Olson
Raymond James Charitable Endowment
Starline Brass
Virginia Heagney and James P. Tobin
Betty Bohl Vollmar

GOLD CLOVER

\$2,500 - \$4,999

American Outdoor Brands
Debra Barnes
Bayer Fund
Linda Jo Turner and Dale E. Brigham
Diane Cole
Crader Distributing Company
Andrew H. Fulmer

Leon and Annie Davis Foundation
Missouri Farm Bureau Federation
Missouri Soybean Merchandising Council
States' 4-H International Exchange Programs
Sydenstricker Nobbe Partners
Marla J. Tobin, M.D.

SILVER CLOVER

\$1,000 - \$2,499

American Angus Association
American Endowment Foundation
David E. Baker and Robin G. Walker, Ph.D.
Aaron Baker and Erica Baker
Brittany Barnes
Amber Baughman, D.V.M. and
Christopher R. Baughman, D.V.M.
Charles and Kathy Bondy
Boone Electric Cooperative
Keith and Ruth Ann Boyer
Kyle and Kelli Jo Buettner
Eunice J. Campbell
Central Crop Insurance, LLC
Central Missouri AGRIService, LLC
Gregory Chapman, D.V.M.
Cathy Cody, M.D. in memory of
Patrick J. Cody
Michael Colvin and Pamela Colvin
Corteva Agriscience
Robert W. Crawford
Dr. Elizabeth Maggard Crowley
Edward Jones Financial Companies
Farmers Mutual Hail Insurance
Company of Iowa
Fechtel Beverage and Sales
Financial Counselors, Inc.
Patty Fisher and David Fisher
Clark Fobian, D.V.M. and
Rita Mawson Fobian
Franklin County Animal Medical
Benjamin Gallup and Renetta Gallup
Mark J. Goth and Mary Goth
Konrad and Barbara Heid
Henderson Implement Company
Jeffrey L. Houts
Theodore C. Jacoby, Jr. and Vicki Jacoby
Kyle W. Kerns
Doug Kueker, Ph.D.

Emily Elizabeth Kueker
Fredric A. Martz, Ph.D.
MFA Incorporated
Earl J. Niemeyer and Shari Beth Niemeyer
Noah's Ark Animal Hospital
OBP
Peachtree Catering
Pike County Extension Council
Ray-Carroll County Grain Growers
RIBUS, Inc.
Bill Riggins
Rocky Mountain Elk Foundation
Rosebud Tractor and Equipment Company
Henry C. Semon
Barbara Soehnlén
Sparks Maintenance Contracting
T. C. Jacoby & Company, Inc.
Target Corporation
The GoodCoin Foundation
George E. Thomas
Ernest Verslues and Janice Verslues
Vivayic, Inc.
Wal-Mart Stores, Inc.
White Mule Winery
Mark Wolfe
C. Everette Wood and
Mary Catherine Lamm Wood

BRONZE CLOVER

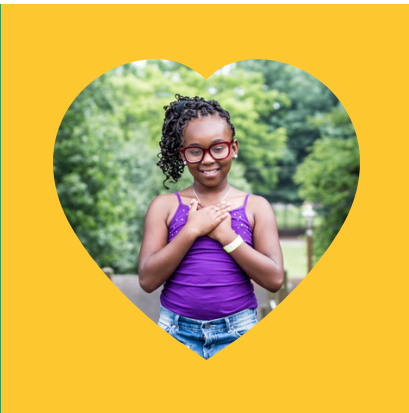
\$250 - \$999

1canoe2 LLC
4 Land's Sake LLC
Advanced Foundation Repair
Ag Direct
Ag-Power, Inc
AgriServices of Brunswick
AgriThority, LLC
AmazonSmile
Art's Pest Control
Baylee Asbury
Diane Marie Audsley and Howard E. Audsley
Rachel Elaine Augustine and
Adam Augustine
BASF Corporation
Ashlyn Becker and Clayton Becker
James Steven Berger and Kathy Berger
Big Game Hunters Foundation
Chad Bilby

Jacob Black
 Betsy A. Blades and Curt K. Blades
 B-Line Engraving
 Boeing McDonnell Foundation
 Bohon Sleep & TMJ Therapy
 Kellie Bray
 Brevant
 Michelle A. Brooks and Phillip Brooks
 Geri F. Brown and Greg Brown
 Brundage Law Firm
 Carol Busier
 CAFNR Alumni Association
 Car Wash Specialties, LLC
 Jeffrey Carter
 CFM Insurance
 Dillon Chadd
 Chigger Creek Wood Products
 Robert Childers and Mary Leamon-Childers
 Chocolaterie Stam
 Clay County 4-H Council
 Coleman Appliance Center
 Missouri Department of Conservation
 Commerce Bank
 Charlotte Conner and Danny R. Conner
 Cooper County 4-H Council
 Mr. and Mrs. Don Copenhagen
 Tom Cox
 Craig Lehman Shelter Insurance
 Keith C. Cramer and Elizabeth Cramer
 Deanna Backs Cross
 Betty Sue Crouch
 Larry D. Douglas and Ruth Ann Douglas
 Drury Inns, Inc.
 E. M. Burger Foundation
 Martha S. Ebbesmeyer and
 Robert J. Ebbesmeyer, D.V.M.
 Enterprise Bank & Trust
 Epperson Family Farms
 Exchange Bank of Missouri

Lupita Fabregas, Ph.D.
 Joan Fahrmeier
 Nancy E. Fansher
 Farm Credit Southeast Missouri
 Farmers National Company
 Fidelity Investments Charitable Gift Fund
 Jim Fisher
 Richard and Renee Fordyce
 Fulton Car Rental, LLC
 Darren Goedeke
 Ann Goyea
 Rosalie J. Graves, Ph.D. and
 Christopher B. Wallace, Ph.D.
 Katelynn Greco
 Brock Hall and Wendy Hall
 Karen Hamm
 Breanne and Jordan Harmon
 Deanna Ward Harper
 Harper, Evans, Wade & Netemeyer
 Fay A. Hartley-Martz and Kevin L. Martz
 Alice Havard
 Clay E. Haynes and Dana Brown Haynes
 HCA Healthcare
 Heimer & Associates, Inc.
 Heritage Tractor
 Robert E. Hertzog, D.V.M.
 Joan and John Hickman
 Monica S. Hoenshell and
 Warren L. Hoenshell
 Peter Hofherr, Ph.D.
 J. Greg Houtsma
 Pamela Idel and Robert G. Idel
 William P. and Nancy A. Jackson
 David Janish and Linda Janish
 Paul Kastendieck
 Michelle Kleeman
 Eleanor Kloeppel
 Langdon & Emison, LLC
 Kevin M. Langford and Carol A. Langford

Learfield Communications
 Mr. and Mrs. Craig S. Lehman
 Les Bourgeois Vineyards
 Marilyn L. Logan and
 Kenneth Logan, Ph.D.
 Luecke's Roofing LLC
 Joseph Luther
 Mr. Brock M. Lutz
 Pro Pumping & Hydrojetting, LLC
 Jennifer Lynn McCord and
 Morris B. McCord
 McCord & Company
 Nancy McGuire
 Chastity Menz
 Meta
 James Meyer and Kathy Meyer
 MFA Oil Company
 Midwest Dairy Association
 Midwest Trust Company
 Missouri Cattlemen's Association
 Missouri Department of Agriculture
 Missouri Egg Council
 Missouri Eye Consultants
 Missouri Holstein Association
 Missouri Southern Seed Corporation
 Missouri State Fair
 Missouri Wine and Grape Board
 MO Agribusiness Association
 MO State Employee Charitable Campaign
 Paul E. Moentmann and
 Sandra J. Moentmann
 Margaret Momphard and
 Douglas Momphard
 Zane Myers
 Dr. Curtis J. Nelson
 New-Mac Electric Cooperative, Inc.
 Gina Newton
 Ryan Niemeyer
 Niendick Cattle And Grain



Noah's Ark Veterinary Service, PC
Norfolk Iron & Metal Co.
Jim and Sandy Ollar
Osage Seed and Chemical LLC
Paradise Point Golf Course
Matthew R. Peiter and Laura C. Peiter
Perry Ag Lab
Konnie Plumlee
Prairie Farms Dairy Incorporated
Pro Pumping & Hydrojetting LLC
Protect the Harvest
Mr. and Mrs. Brian E. Pulliam
Rain and Hail Insurance Service, Inc.
Sara Rains
David and Diane Reid
Rhad A. Baker Construction LLC
Rodeo Goat Ranch
Betty Leimkuehler Sapp and
Warren N. Sapp
The Honorable Bruce Sassmann
Jan Sassmann
John L. Saunders and Jean Saunders
Isaac Schevers
Rhonda and Jay Shafer
Shoal Creek Golf Course
St. James Winery
Marshall Stewart, Ed.D. and
Janet Jernigan Stewart
Gregory Bryan Strawhun
Lucy Suthoff in memory of Steve Suthoff
Swift and Co. Realty
Syngenta Crop Protection

The Jim Russell Foundation
The Law Firm of Haden & Colbert
The Poultry Federation
Three Rivers Electric Cooperative
John Tippie
Kent Topliff and Sharon M. Topliff
Lorene Trickey
Kelvin Lee Triplett and Barbara A. Triplett
United Country Land and Lake Properties
Anita Geddes Vanderwert and
Wayne Vanderwert, Ph.D.
Jessica M. Volkman
Franklin F. Wallis
Wattlow Electric Manufacturing Co.
K. Russell Weathers
Dr. Dennis Joe Weaver and
Mrs. Jana D. Weaver
Shannon White
Nancy Wilkerson
Patricia O'Brien Wilson and
The Honorable Roger B. Wilson
Noah Wilson
Erma Jo Wrye and Gary Wrye
Bradley Zobrist and Lauren Zobrist
Zoelee Fabrics

MU LEGACY SOCIETY

The Missouri 4-H Foundation honors individuals who provide for the future of Missouri 4-H through an estate gift. These individuals are recognized through the University of Missouri Legacy Society.

Aaron and Erica Baker
Bill Carter
Diane Cole
Robert and Gloria Fridley
Clark Fobian, D.V.M. and
Rita Mawson Fobian
Dr. Nancy Headrick
Don and Melva Henderson
Vicki and Chuck Huber
Michael Linville, D.V.M. and Ina Linville, Ph.D.
Donald and Kathy Nicholson
Martha Orris
Ken and Elaine Osborn
John and Jean Saunders
George Thomas
Kathryn McKillip Thrift
Jamie Tomek
Dr. Linda Jo Turner and Dr. Dale Brigham
K. Russell Weathers

We make every effort to ensure accuracy.
If your name is omitted or not listed
properly, please contact us at (573) 882-
2680 or 4hfoundation@missouri.edu.



MISSOURI 4-H FOUNDATION

Missouri 4-H Foundation
109 Whitten Hall
Columbia, MO 65211

P: 573-882-2680
Toll-free in Missouri: 800-642-8041
E: 4hfoundation@missouri.edu
W: 4h.missouri.edu/foundation

