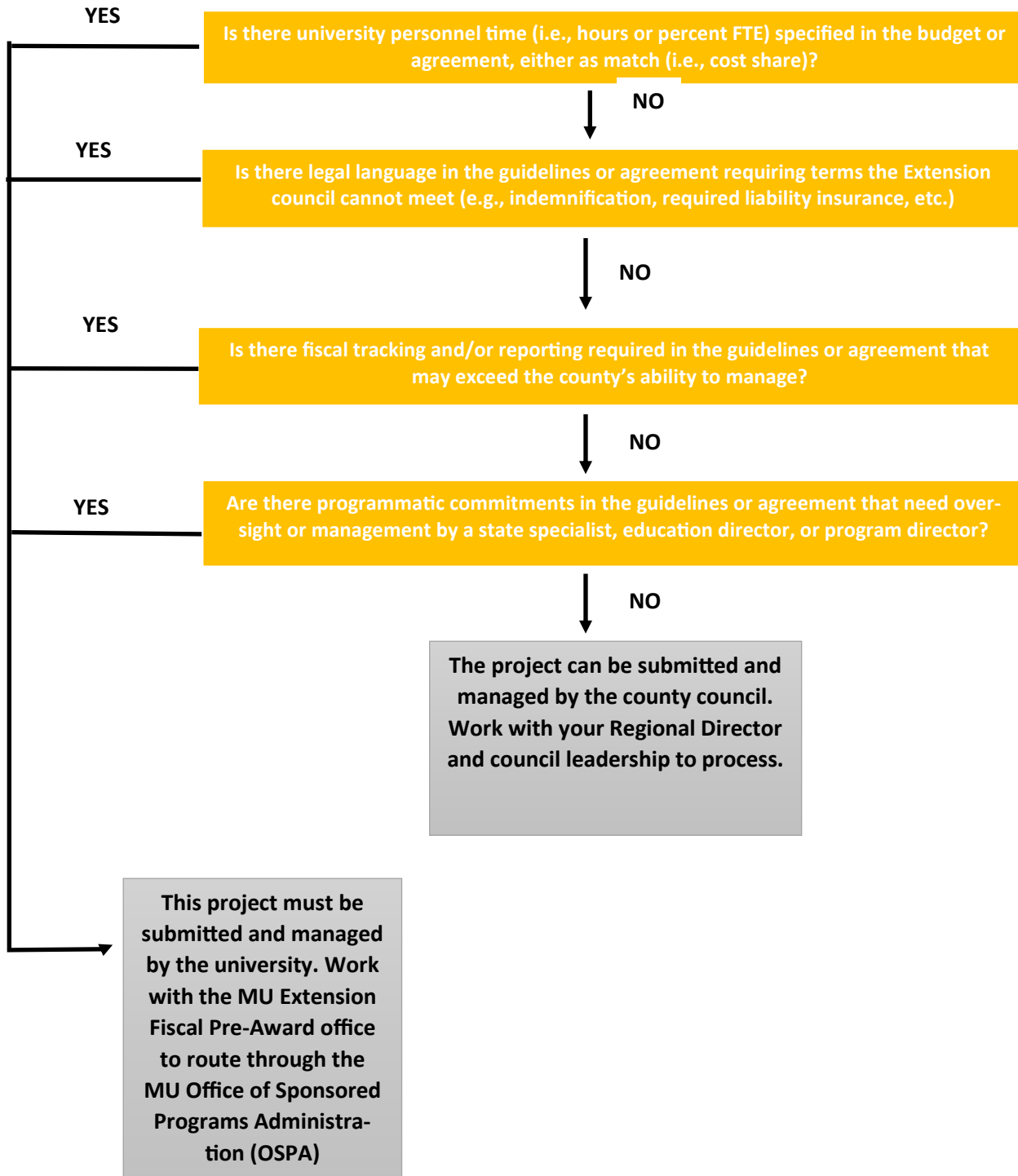


## Appendix 8: County Extension Council or MU?

The purpose of this document is to help you determine whether a grant or contract should be routed through the University of Missouri (campus) or the County Extension Council. For a contract, this document applies only if it uses an established rate (fee). For questions about contracts without an established rate/fee, please contact the MU Extension Pre-Award fiscal team.



Reminder: No college/department/division staff member is an authorized signer for the university. All agreements requiring a signature must be signed by an authorized signer in Business Services or the Office of Sponsored Programs Administration.