

COVID-19: Nursery and Garden Center Worker Safety

Nurseries and garden centers are essential businesses

Protect the customer as well as yourself and your coworkers.



Practice zero-contact transactions.

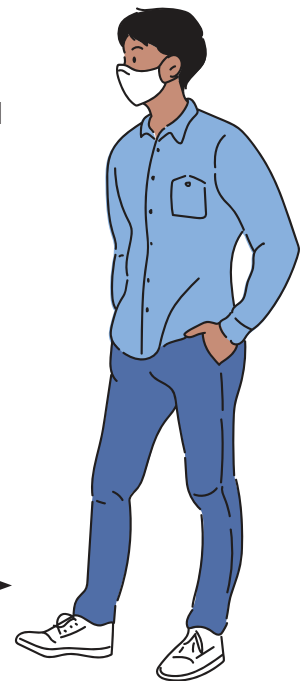


Stay home if you are sick.

- Wear a mask and use social distancing when talking or working with others.
- Sanitize commonly touched surfaces such as door knobs, time clocks, handles, buttons, grips, counter tops, registers and keyboards.
- Practice zero-contact transactions. NO handshakes. Use new disposable gloves when available, and wash or sanitize hands after handling cash, checks or cards.
- Wash and sanitize hands before and after eating, drinking, smoking and using the restroom.
- Wash hands after operating equipment, handling stock, lawn and patio furniture and other commonly touched surfaces. Avoid touching customers' vehicles or property when possible.
- Cloth or leather gloves do NOT provide protection against contamination but may be worn as necessary to protect your hands. Wash gloves daily in soapy water.
- Use foot-operated or open trash receptacles for touch-free trash disposal by staff and customers.



Sanitize commonly touched surfaces.



Stay at least six feet apart.

- Follow CDC guidelines: <https://www.cdc.gov/coronavirus/2019-ncov>.
- Follow state, county and city regulations where business is conducted.
- COVID-19 resources: <https://extension2.missouri.edu/covid-19-resources-public>