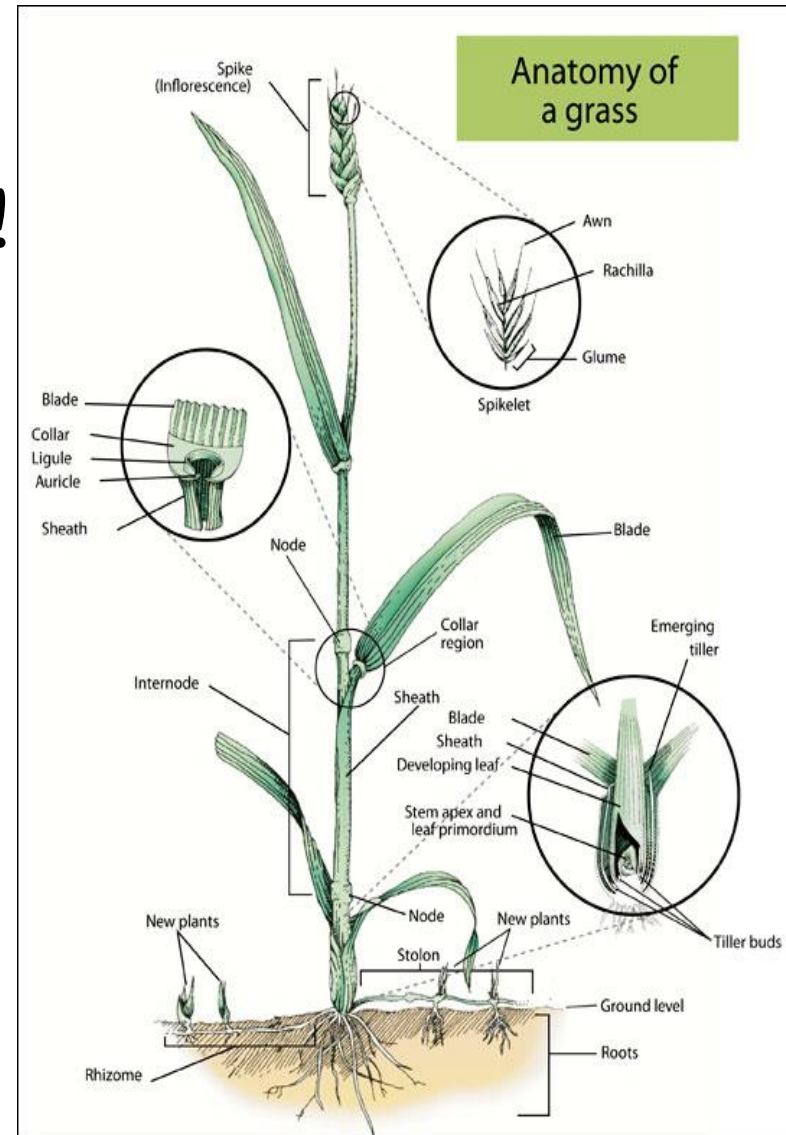
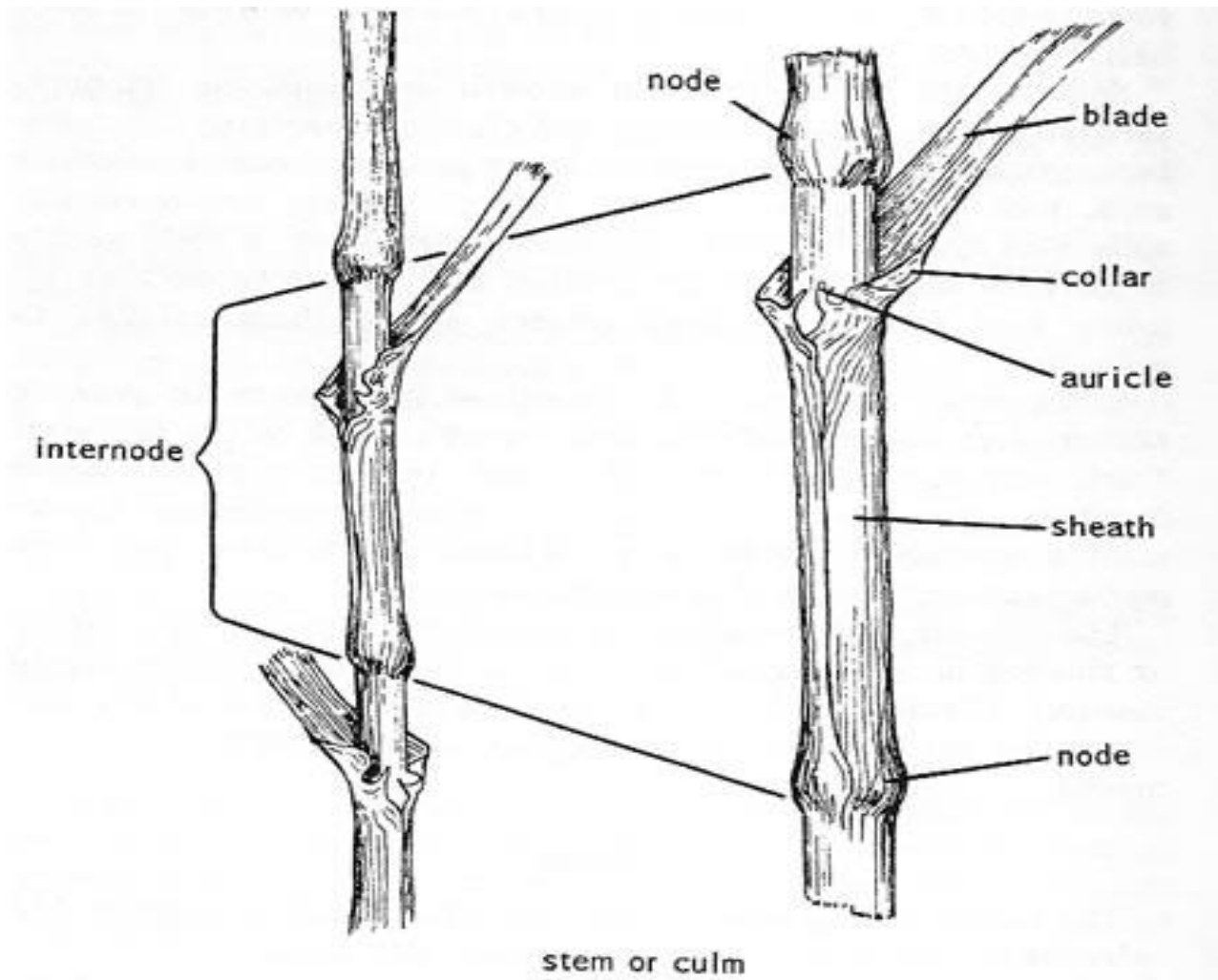


# IDENTIFICATION OF COMMON GRASSES

- Grass and Grass like plants
- Don't just learn the picture!!
  - Before you can identify grass
    - Learn about the parts:
      - Stem (culm)
      - Leaf
      - Roots
      - Seed heads
      - Modified stems



# STEM ( CULM )



# STEMS WITH PUBESCENCE



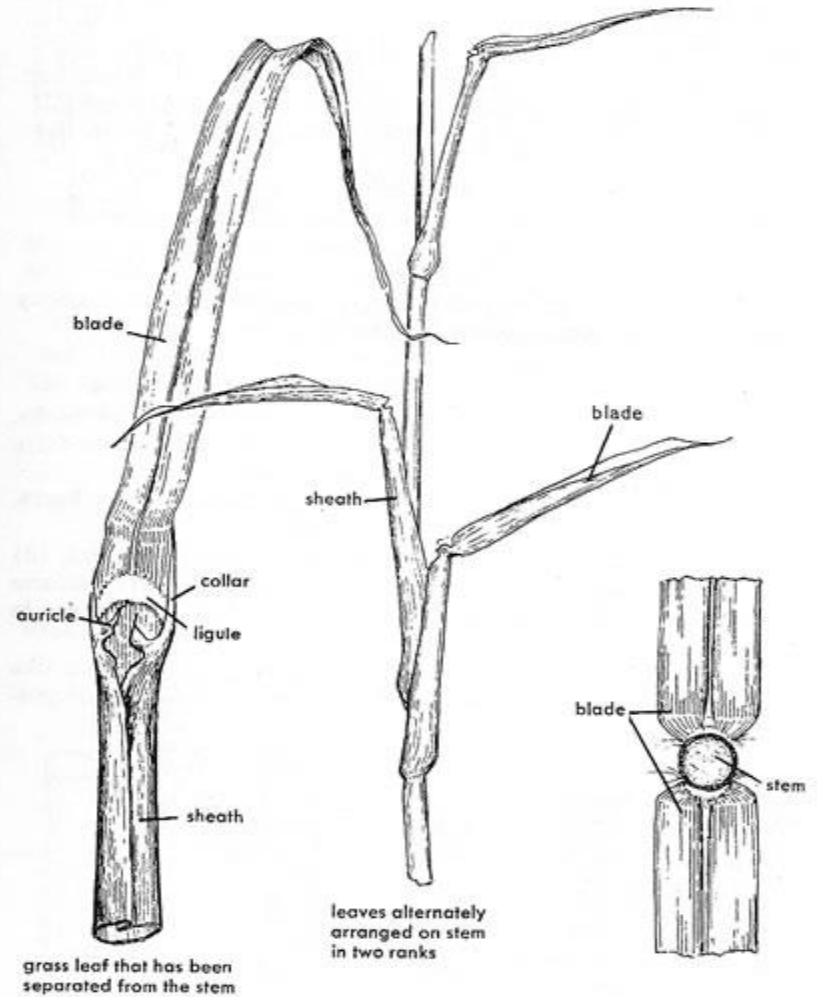
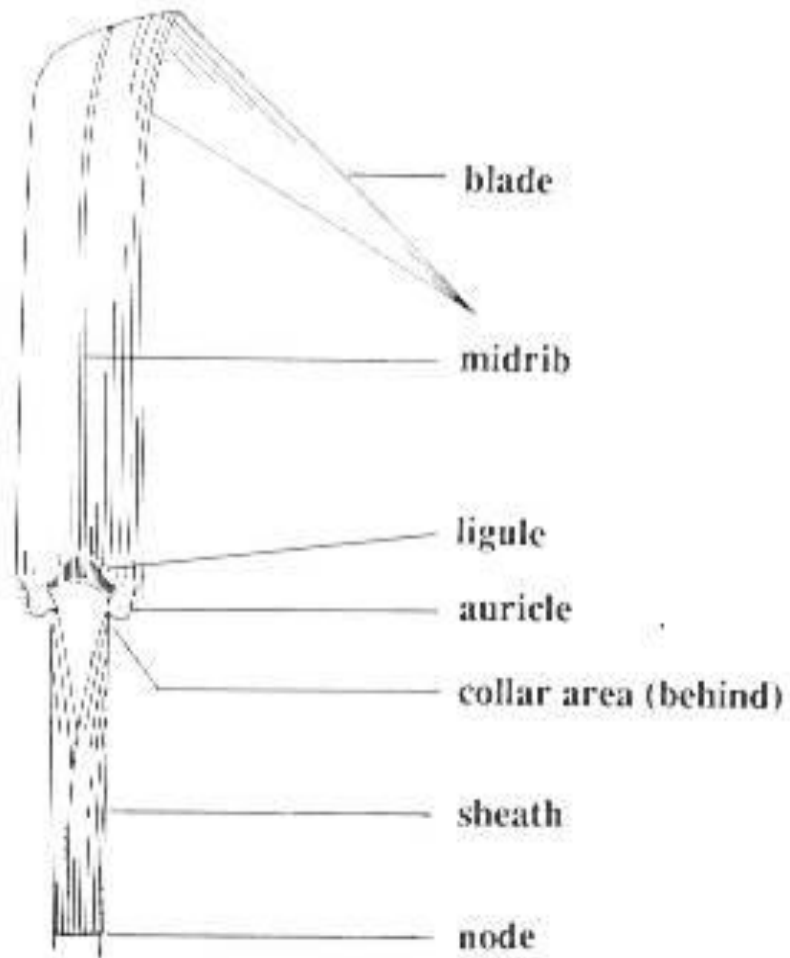
# STEM SHAPES

- The common stem shapes of most grass type plants:
  - Flat \*Orchard grass, Eastern Gamma Grass
  - Round \*Tall Fescue, Smooth Brome Grass



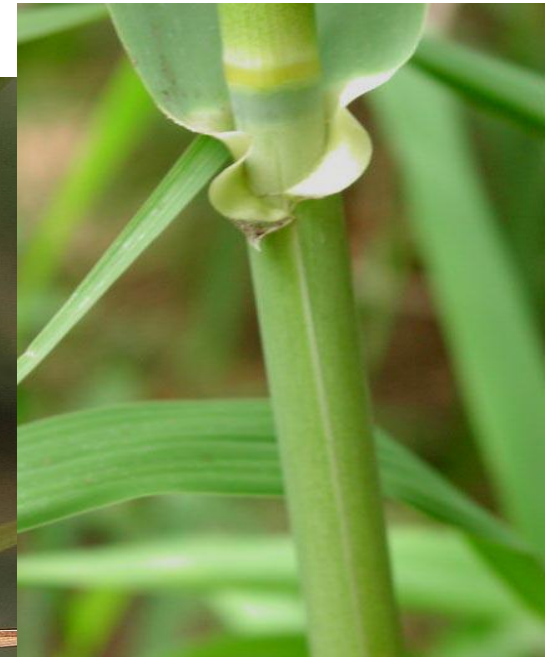
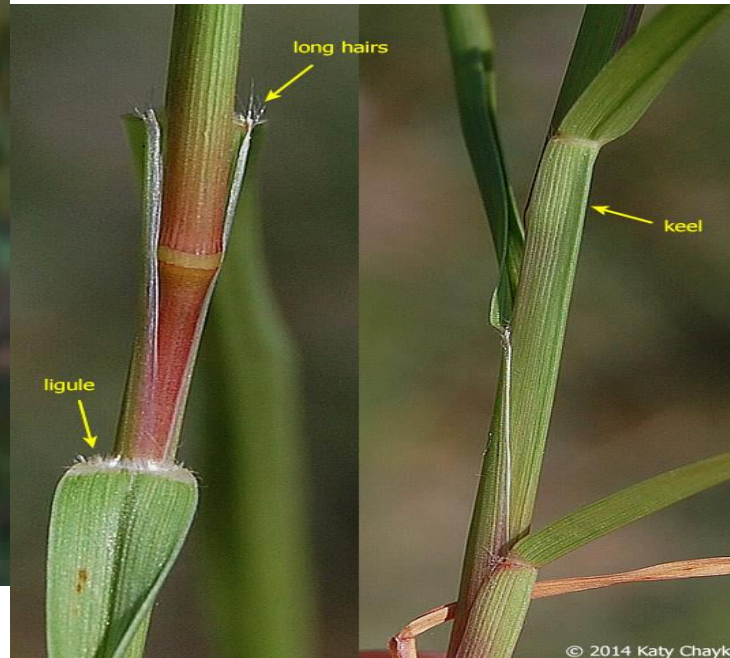


# LEAF

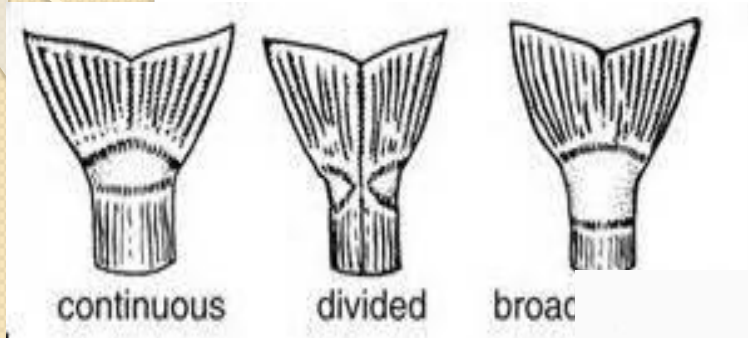


# HOW DOES THE LEAF ATTACH TO THE STEM

- Is the sheath:
  - Wrapped
  - Open
  - Welded (grown together)



# TYPES OF LEAF COLLARS



© 2008 NC State University

**continuous**



© 2008 NC State University

**divided**



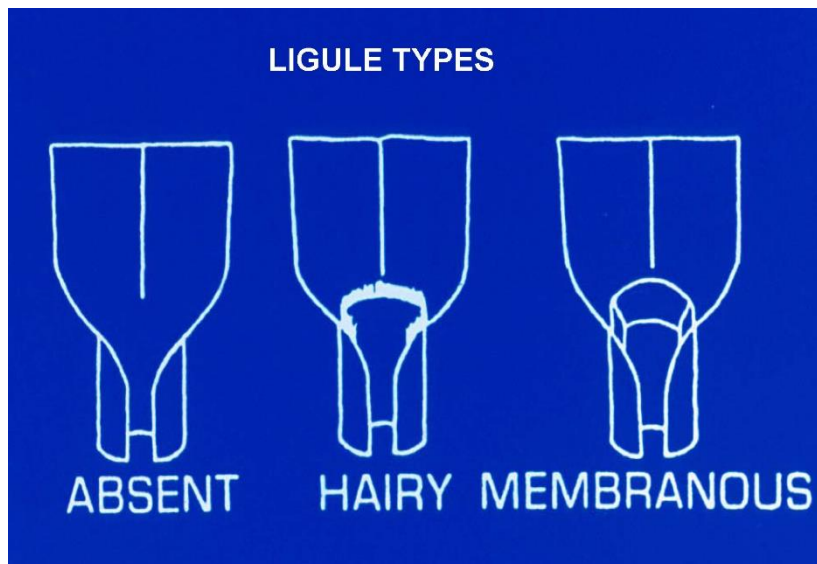
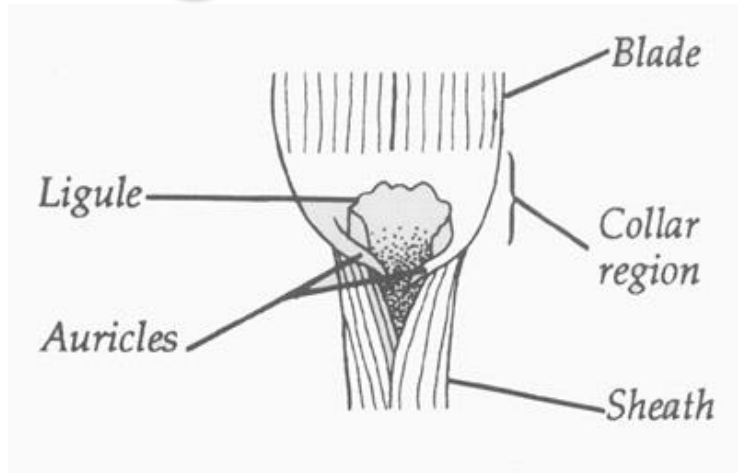


# AURICLES





# Ligule



# WHAT DO YOU SEE?

- Orchardgrass **VS** Tall Fescue





# STEM MODIFICATIONS

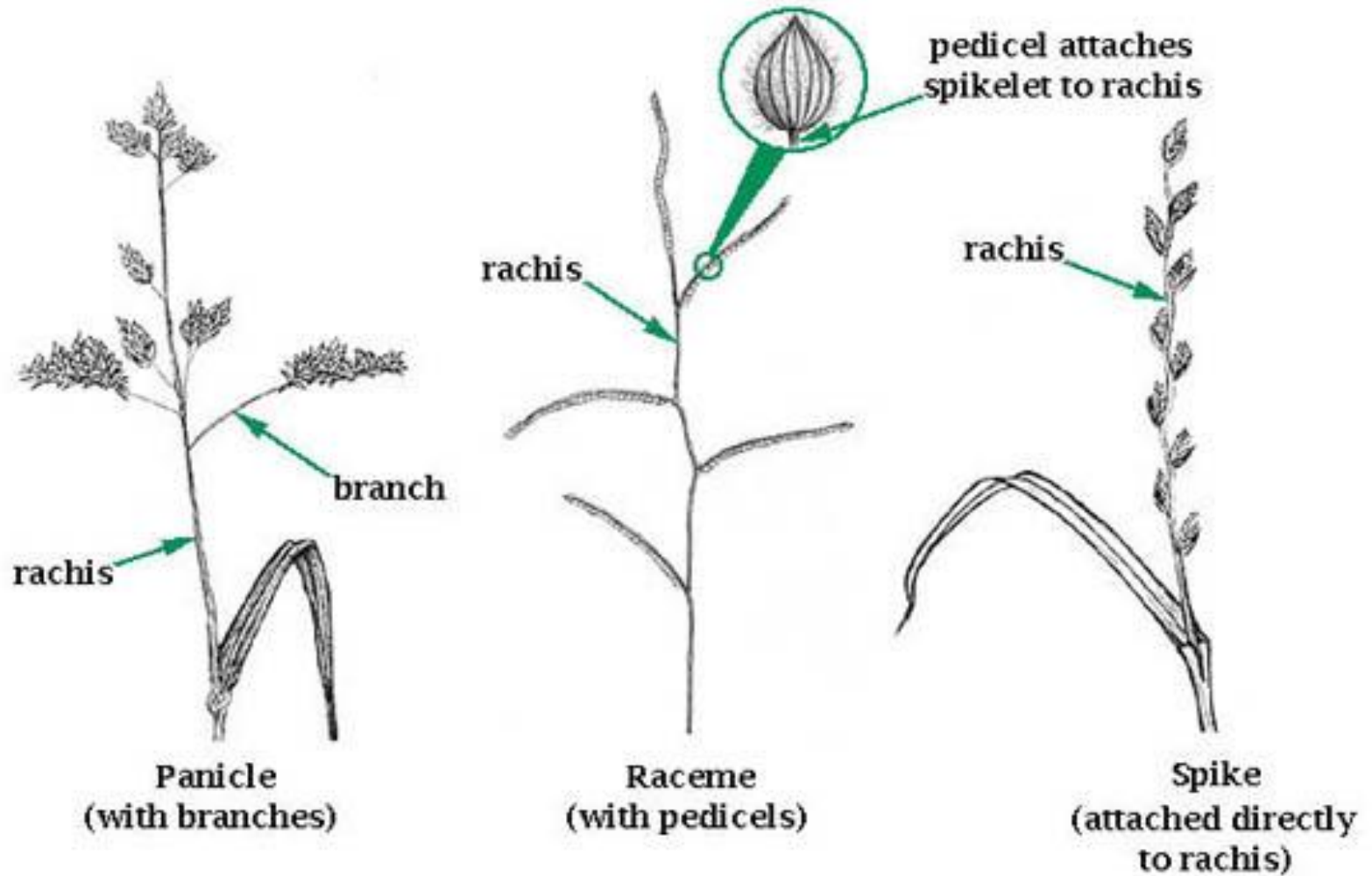
- Rhizomes are often found in perennial grasses



VS Qu



# Seed Heads





# CAN YOU TELL THE DIFFERENCE?

- Timothy Seedhead VS Perennial Ryegrass



# CAN YOU TELL THE DIFFERENCE?

- Orchard Grass Seed Head VS Tall Fescue





# LITTLE BARLEY



# BARNYARD GRASS





# BERMUDA GRASS





# KENTUCKY BLUEGRASS





# BIG BLUESTEM





# OLD WORLD BLUESTEM





# LITTLE BLUESTEM





# SMOOTH BROMEGRASS





# BROOMSEDGE





# CRABGRASS





# DOWNY CHEST/BROME GRASS



Hairy sheaths and leaves plus the large jagged ligule are characteristic of downey brome.

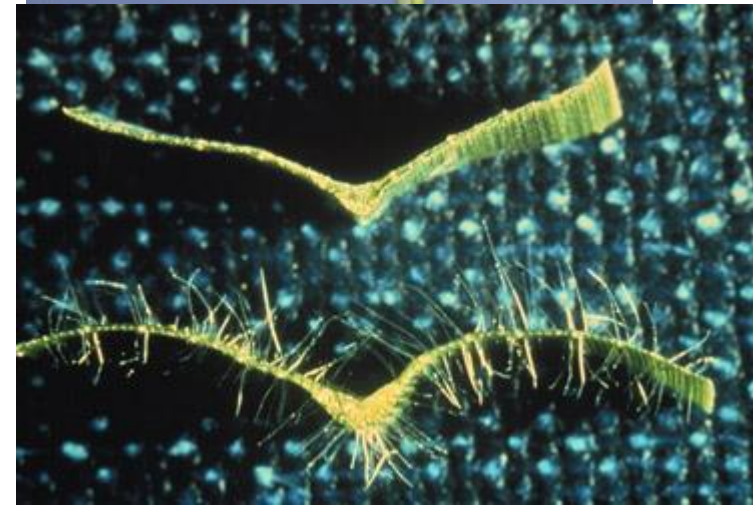


# EASTERN GAMAGRASS





# FALL PANICUM





# TALL FESCUE





# GIANT/GREEN/YELLOW FOXTAIL





# INDAIN GRASS





# JOHNSONGRASS





# ORCHARD GRASS





# PURPLE TOP





# REED CANARY GRASS





# RYEGRASS

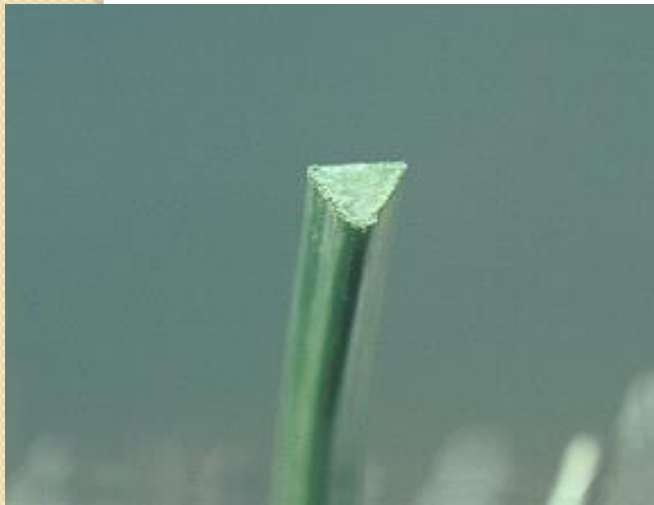


# RYEGRASS





# SEDGES

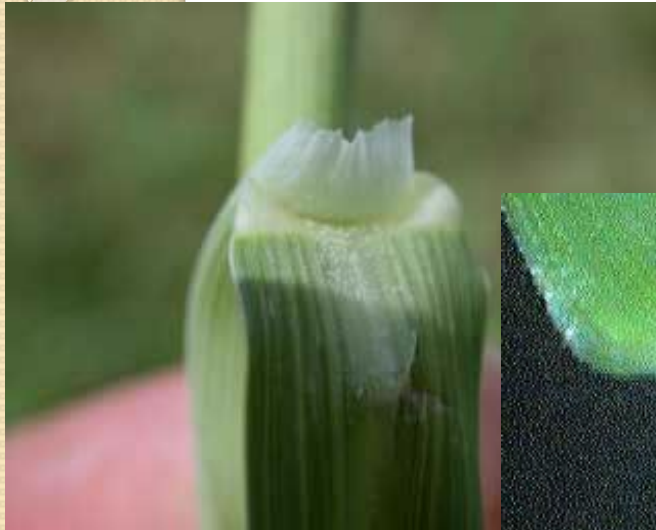


# SWITCHGRASS





# TIMOTHY



# IDENTIFICATION OF COMMON LEGUMES

- Legumes / Nitrogen fixing plants
- Again don't just learn the picture!!
  - Before you can identify legumes
    - Learn about the parts:
      - Stem (culm)
      - Leaf
      - Roots
      - Flower
      - Modified stems





# TYPES OF STEM ARRANGEMENTS

- Single Upright
- Bush type
- Vine type (Climber)



# COMPOUND LEAF ARRANGEMENTS

- Pinnate
  - Alfalfa, Sweet Clover
- Palmate
  - Red Clover, White Clover
- Compound
  - Partridge Pea
- Bi-compound
  - Illinois Bundle Flower, Cats Claw Sensitive



# LEAF

- Compound leaf structure



# LEAF MARGINS

- Smooth leaf margins



- Serrated leaf margins





# ROOTS

- Taproot systems
  - Alfalfa plants
- Nitrogen Fixing
  - Nodules on Soybeans



# FLOWERS

- Flower Colors and/ or Shape





# STEM MODIFICATION

- Stolons can be found on White Clover





# ALFALFA





# BIRDSFOOT TREFOIL



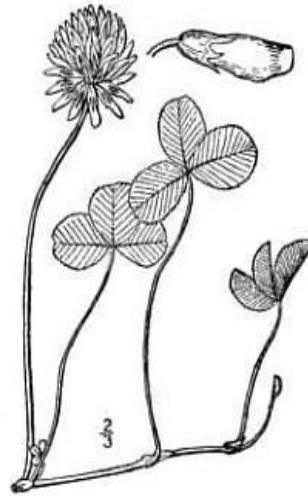


# CATSCRAW SENSITIVE BRIAR





# WHITE CLOVER





# RED CLOVER





# SWEET CLOVER





# LOHOP CLOVER





# GOAT'S RUE





# ILLINOIS BUNDLEFLOWER

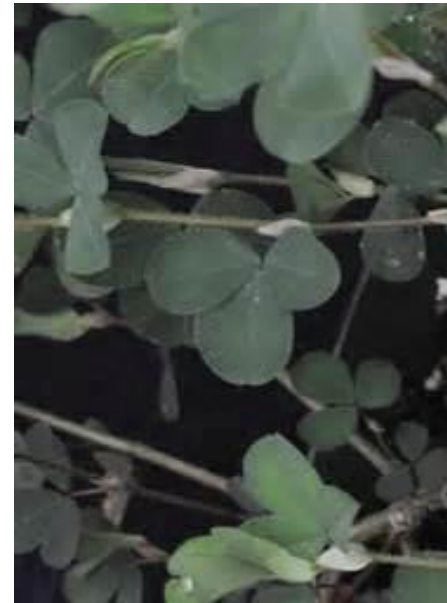




# COMMON LESPEDEZA



# KOREAN LESPEDZA





# SERICEA LESPEDEZA





# PARTRIDGE PEA





# TICK TREFOIL (BEGGER TICK)



# HAIRY VETCH





# CROWN VETCH





# FORBS





# BULL (HORSE) NETTLE





# COMMON CHICORY





# CINQUEFOIL





# COMMON COCKLEBUR





# CROTON





# CURLY DOCK





# DAISY FLEABANE





# DANDELION





# FIELD BINDWEED





# PRAIRIE GOLDENROD





# HORSEWEED





# IRONWEED





# LAMBSQUARTER





# COMMON MILKWEED





# MULLEIN





# OXEYE DAISY





# PERILLA MINT





# PIGWEEED





# PLANTAINS





# POISON HEMLOCK





# POKEWEED





# QUEEN ANNES LACE (WILD CARROT)





# RAGWEEDS





# RED SORREL





# SMARTWEED





# SPOTTED KNAPWEED





# THISTLES





# THREE SEEDED MERCURY





# COMMON YARROW







# WOODY PLANTS



# BLACKBERRY





# DEWBERRY

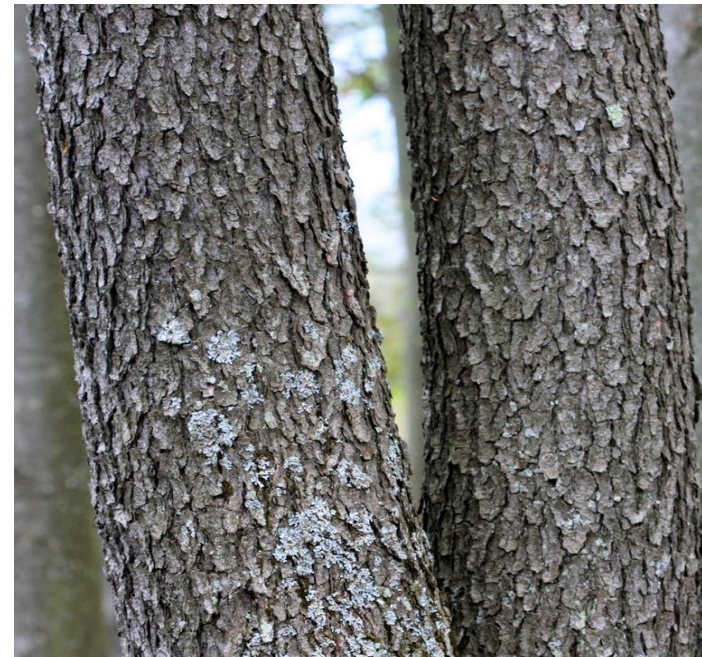


School of Renewable Natural Resources  
LSU AgCenter  
2003 - Adam A. Augusta



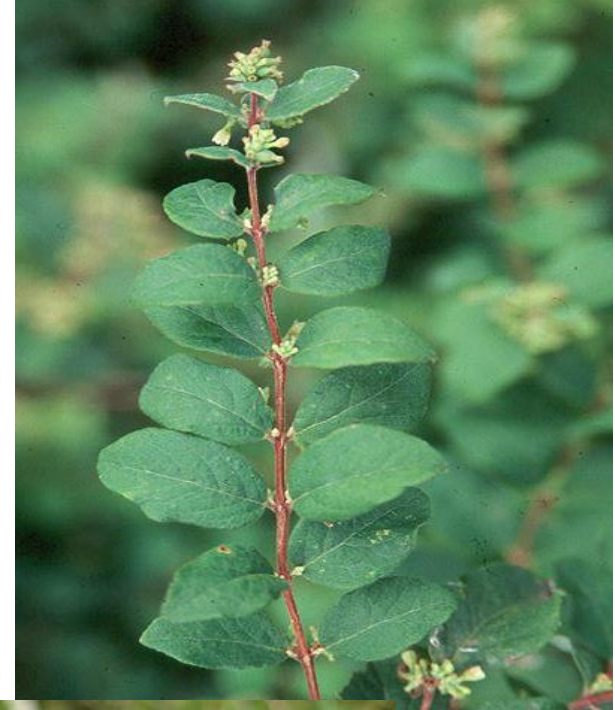


# BLACK CHERRY





# CORALBERRY BUCKBRUSH





# DOGWOOD





# ELM



Korhnek





# GRAPE





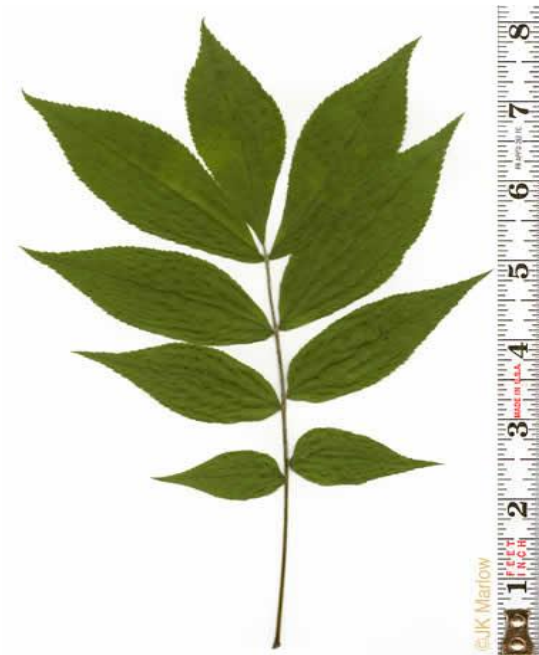
# GREENBRIAR







# HICKORY





# HONEYSUCKLE





# LOCUST (BLACK)





# LOCUST (HONEY)





# RED OAKS



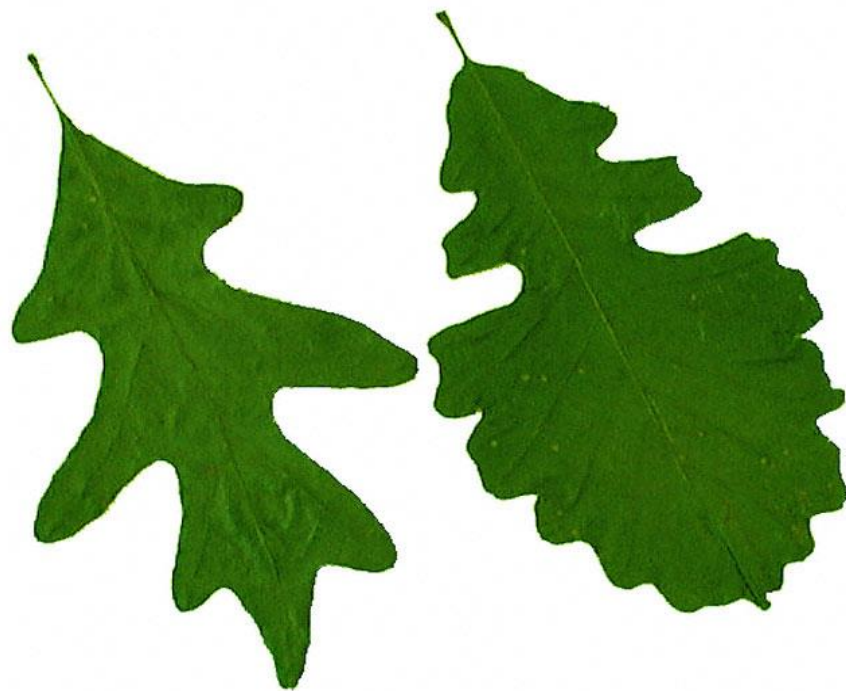


# RED OAKS





# WHITE OAKS





# OSAGE ORANGE





# PERSIMMON





# POISON IVY





# RED CEDAR





# MULTIFLORA ROSE



2005 © Peter M. Dziuk





# SASSAFRAS



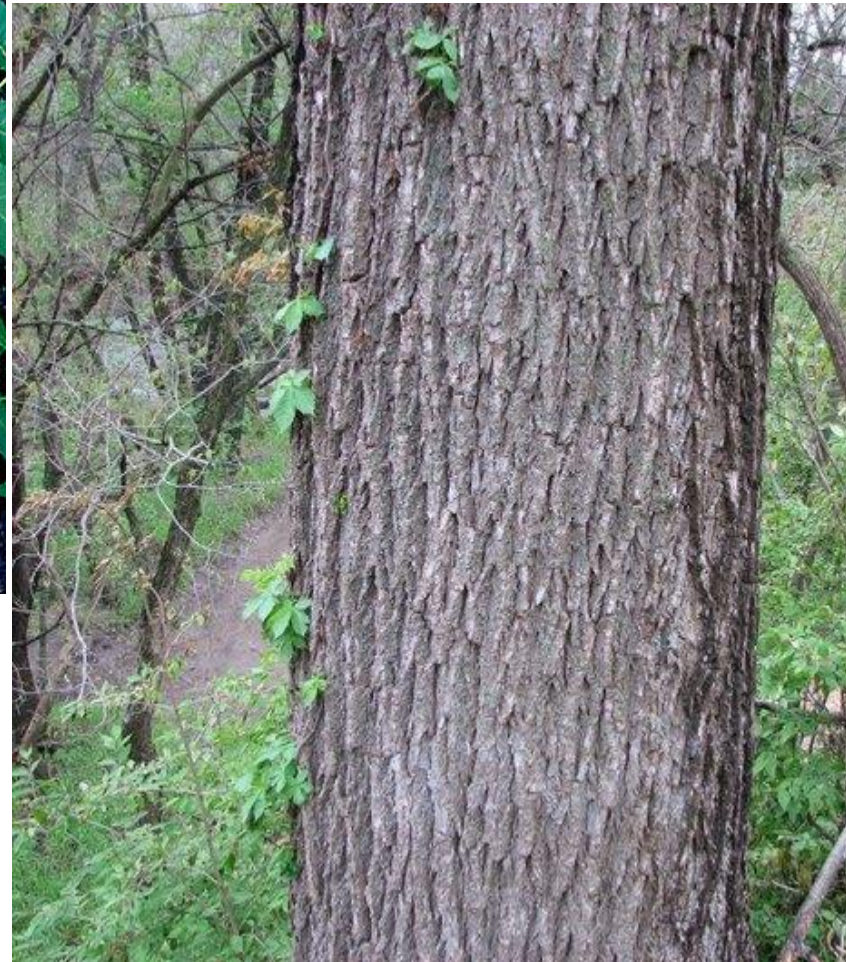


# SUMAC





# WALNUT





# WILD PLUM

