



UNIVERSITY OF MISSOURI EXTENSION
St. Clair County
2021 ANNUAL REPORT



655 Second Street
1st Floor Courthouse
Osceola, MO 64776
417-646-2419



Office of Extension
and Engagement
University of Missouri

Vice Chancellor's Office
108 Whitten Hall
Columbia, MO 65211
PHONE 573-882-2394
EMAIL StewartMars@missouri.edu

December 1, 2021

Dear county commissioners and friends of MU Extension and Engagement,

As we look forward to 2022, I want to take a moment to celebrate all that we have accomplished together this year. You, our closest partners, are key to improving Missourians' lives and opportunities.

You have been vital to the work that has already extended broadband access and workforce development strategies statewide. You have helped us connect with the right partners, working together toward meaningful outcomes that will help our communities thrive in our areas of greatest need around the economy, education and health.

During MU Extension and Engagement Week in October, we learned about some of the ways that MU's NextGen Precision Health Initiative will help Missouri improve statewide health care indicators from our current ranking of 38th in the nation to 25th.

COVID-19 has shown us that we must expand investment in our health care resources, knowledge and infrastructure. It has exposed the urgent need to make research and expertise available in communities and to empower individuals and providers to address every aspect of individuals' and communities' health needs — including the inequities of social determinants and their effects on people's health.

Our extension faculty is poised to help identify those needs and be the bridge to the health care providers and caregivers, the clinical trials and public health initiatives that can deliver improved healthcare access and outcomes in every county across our state.

I hope you see the impact of your hard work this past year throughout this county annual report. I thank you for your continuing support as we recommit ourselves to do what we do best: help communities thrive through civic engagement, community building and neighborliness. We look forward to continuing the programs, partnerships, and sharing of knowledge that foster kindness, caring, respect and deep connections in the year and decade to come.

Sincerely,

Marshall Stewart, EdD
Vice Chancellor, MU Extension and Engagement
Chief Engagement Officer, UM System

Who we are

Faculty and staff

Susan Jones-Hard

Interim County Engagement
Specialist in Nutrition and
Health Education



Kim Hall

Youth Development Specialist



Ramon Arancibia

Commercial Horticulture
Specialist



Patrick Davis

Livestock Specialist



Pat Miller

Agronomist



Kyleigh Sullivan

Human Development and
Family Science Specialist



Wayne Prewitt

West Central Regional Director



Debbie McSperitt

Office Manager



Council members

Kay-Lynn Lysinger, Chairman

Gene Hartley, Vice-chairman

Jill Chapman, Secretary

Rebecca Siegismund, Treasurer

Matthew Noakes, District I

Kathy Morlok, District II

Debbie Siegismund, District III

Sasha Bray, District IV

Vacant, District V

Randy Smith, County Commissioner

Mike Nance, Farm Bureau



County commissioners

Bob Salmon, Presiding Commissioner

Leroy Strope, North Commissioner

Randy Smith, South Commissioner

Budget and more

Appropriations budget

Income

County Appropriations	40,000
Total Income	40,000

Expenses

Salaries/Benefits	30,146
Travel	1,127
Telephone	905
Office Supplies/Service	365
Publishing/Printing	135
Copy/Reproduction	674
Postage	625
Endowment	3,442
Insurance	1,697
Miscellaneous	100
Advertising	347
Total Expenses	39,563

Return on Investment

University System	100,000
-------------------	---------

Key outcomes and numbers

- ✓ The University of Missouri has launched [MU Community Connect](#), a platform designed to improve opportunities for connection between the university and various populations in the communities they serve.
- ✓ Virtual workshops via Zoom began to inform childcare providers about the importance of sleep
- ✓ SBDC held multiple classes to help Missourians learn about starting a business and how to write a business plan
- ✓ 2,552 Total educational contacts from MU Extension to residents of the county, including:
 - ❖ 264 contacts related to productive farming, better gardening, and managing natural resources
 - ❖ 2,264 contacts related to healthy eating and aging, strengthening families, personal finance, or youth development
 - ❖ 24 contacts related to starting businesses, developing community leaders, or renewing the local economy

MU Extension is a unique funding partnership.

Extension funding is a three-way partnership of federal, state and county government. Federal and state money, through the University of Missouri system, pay professional staff salaries, training costs, computers and communication equipment. County funds support the local office, secretarial and youth assistant salaries, staff mileage and council expenses.

The St. Clair County Extension Council, faculty and staff would like to express our appreciation to the St. Clair County Commissioners for their continued support of extension programs.



Local Support

Did you know you can donate directly to St. Clair County Extension with a gift to be used immediately or as an endowment contribution for long term efforts. Monies put into the endowment are left forever to earn interest with the county office benefiting each year. You can also direct your donation to a specific program such as 4-H or Master Gardeners.



Economic Opportunity

Missouri SBDC for Agriculture, Food and Forestry

Missouri Small Business Development Centers, MU Extension agriculture and environment specialists and MU Extension agricultural economists combine their expertise and resources to serve Missouri agriculture.

“The extension specialists’ local relationships and expertise, combined with the Missouri SBDC’s business knowledge and resources, can provide a powerful new level of service to agriculture businesses facing today’s challenges.” David Steffes, Missouri SBDC director of agricultural business services.

Missouri SBDC and MU Extension A&E’s work will focus on assisting businesses with moving forward from the recent disruptions of the COVID-19 pandemic. From financial management education to business model pivots and value proposition identification, faculty across the state will provide assistance and access to resources to strengthen Missouri’s agricultural businesses.





Economic Opportunity

Commercial and Private Horticulture - Ramon Arancibia

MU Extension Specialist based in Bates County to service 12 counties in the West Central Region. Face to face farm visits and workshops/trainings presentations in addition to online courses, townhall meetings, newsletters (videos), and emails are the venues to assist produce growers. Also, growers receive articles published in the Missouri Produce Growers (MPG) bulletin. Extending information and assisting produce growers is expected to increase local production and the sustainability of the industry.

St. Clair Co. direct contacts	9
St. Clair Co. indirect contacts	12
MO direct contacts	2435
Total MO contacts	9795
Presentations/workshops/field days (direct contacts)	Presentation
Food Safety Modernization Act - PSA training (Morgan, Clark), 4	s
Soil characteristics and fertility (Camden)	10
Great Plains Growers Conference (MO, KS, NE, OH)	
Master Gardener Core Training (Laclede, Hickory), 2	
Coordination microbial risk assessment of agricultural water (Rich Hill), 2	
Online statewide courses/trainings:	Sessions
Food Safety Modernization Act – PSA training	6
MU Sembrador: Huerta sostenible familiar	13
MU Sembrador- Del Huerto frutal a la conserva artesanal	3
Commercial Vegetable Production Webinar	20
Increasing Utility of Native Persimmons (MO)	1
OSHER fall horticulture course (MO)	8
MU Food System Network (Christian, Dent)	8
Home Horticulture -Town Hall Interactive Web Instruction	1
Articles:	
Online Commercial Horticulture Newsletter (biweekly videos) https://www.youtube.com/playlist?list=PLLUfLEphtKwu5F9_S7XfM7SvXH2Ak6RYd	7
MO Produce Growers https://ipm.missouri.edu/MPG/allMPG.cfm	1
Journal of Plant Registry https://onlinelibrary.wiley.com/action/doSearch?AllField=DOI:%2010.1002/plr2.20140	1
Grants	2
Feasibility of producing sweetpotato transplants and field production in MO	
Potential for watermelon production to supply the 4 th of July market	



Economic Opportunity

Livestock – Patrick Davis

Online SW Mo. Beef Cattle Conference

This was an online conference held over two evenings that discussed three topics related to beef cattle production and management. The topic areas and presenters are as follows:

- Stocker cattle nutritional and health management-Eric Bailey MU Extension State Beef Cattle Nutrition Extension Specialist
- Low-input heifer development system that produces profitable open feeder heifers-Jordan Thomas MU Extension State Beef Cattle Reproduction Specialist
- Business management, COVID-19 considerations, and economics of a stocker operation-Wesley Tucker MU Extension Regional Ag Business Specialist

Myself along with other SW Missouri MU Extension Livestock Field Specialists were involved in planning, conducting and electronically providing materials to the 98 participants educated over the two evenings. The conference was sponsored by Mo SBDC Ag Food and Forestry Center, MU Extension and MU+NRCS Grasslands Project. The breakdown of participants by the counties that I cover are as follows: Cedar County 1 person, Dade County 7 people, Barton County 1 person, St. Clair County 1 person, and Vernon County 6 people.

Online Warm Season Grass Cattle Grazing Workshop

This online workshop was held to educate participants on warm season grass management and cattle management on warm season grasses. MU Extension and MU/NRCS Grasslands project sponsored this workshop. MU Extension livestock and agronomy field specialists educated a total of 22 people. Topics and presenters are as follows:

- Warm Season Grass Development and Management-Terry Halleran
- Cattle Nutrition and Grazing Management on Warm Season Grasses-Patrick Davis

In addition to providing education through the presentation mentioned above I helped in planning, conducting and providing electronic education resources to the participants that attended the workshop. The breakdown of participants by the counties that I cover are as follows: Cedar County 2 people, and St. Clair County 2 people.





Economic Opportunity

Spring Online Sheep and Goat Production Workshop Series

This 3-night online workshop series educated participants and provided them strategies on proper production management of their sheep and goat operations. MU Extension ag specialists as well as a Lincoln University Cooperative Extension farm outreach worker work together to provide presentations during this workshop series and educated a total of 114 participants. The topics and speakers are as follows:

- Sheep and goat selection for a successful operation-Jennifer Lutes
- Reproductive management for optimum kidding or lambing crop-Patrick Davis
- Economics of multiple births in a sheep or goat operation-Jennifer Lutes
- Sheep and goat composting and dealing with losses-Susan Jaster

In addition to providing education during the workshop series as you can see from above, I also worked with colleagues to plan, conduct and provide electronic educational resources to participants that attended the workshop series. The breakdown of participants by the counties that I cover are as follows: Cedar County 1 person, St. Clair County 1 person and Vernon County 1 person.

El Dorado Springs, Mo. Native Grass Pasture Walk

This pasture walk was held at the Schaaf Farm near El Dorado Springs, Mo. and was put on through cooperation between MU Extension, Missouri Department of Conservation, The Nature Conservancy, MU/MDC Native Grass Group and the MU/NRCS Grasslands Project to educate participants on proper grazing and livestock management on native grass pastures. The landowner as well as cooperating partners provided education to the 12 participants. I was involved in planning conducting and providing education as needed. The breakdown of participants by the counties that I cover are as follows: Cedar County 6 people, St. Clair County 3 people and Vernon County 1 person





Economic Opportunity

Fall Online Sheep and Goat Production Workshop Series

This 3-night online workshop series educated participants and provided them strategies on proper production management of their sheep and goat operations. MU Extension ag specialists and a Lincoln University Cooperative Extension farm outreach worker, worked together to provide presentations during this workshop series and educated a total of 125 participants. The topics and speakers are as follows:

- Forage and pasture management for optimum nutrition and health of sheep and goats-Susan Jaster
- Sheep and goat medicine wall-Susan Jaster
- Farm utilization of sheep and goat record keeping for optimum operation management-Jenifer Lutes
- Sheep and goat market outlook-Jenifer Lutes
- Nutrition and management preparation for winter as well as lambing and kidding season-Patrick Davis

In addition to providing education during the workshop series as you can see from above, I also worked with colleagues to plan, conduct and provide electronic educational resources to participants that attended the workshop series. The breakdown of participants by the counties that I cover are as follows: Barton County 1 person, Cedar County 1 person, St. Clair County 2 people and Vernon County 1 person.





Economic Opportunity

Agronomy – Pat Miller

In 2021 I taught the following twenty classes:

Starting Plants from Seed for the Twilight Garden Club in El Dorado Springs
Three Private Pesticide Applicator Training via Zoom On-line
Emerald Ash Borer with MDC forester via Zoom on-line
Spring Alfalfa Insects via Zoom on-line
Summer Alfalfa Insects via Zoom on-line
Pasture and Forage Management Workshop in El Dorado Springs
Dormant Oils versus Summer Oils and Extension Programs Available for Four Seasons Master Gardeners
Private Pesticide Applicator Training In-Person in Nevada
Walker Corner Forage Fertilizer Plot Tours for NEVC Vo-Ag Class and the public
Native Grass Pasture Walk in El Dorado Springs
Soils and Plant Growth at Grazing School in El Dorado Springs
Insect and Diseases section at master gardener trainings at Lebanon, Warrensburg and Hermitage
Food Safety Mechanization Act Produce Safety - Wildlife, Domestic Animals and Land Use section via Zoom on-line
Growing Microgreens via Zoom on-line for Camden master gardener group

I did thirteen educational and class promotion news releases for the following:

Pesticide Applicator Training Options, Ag resources available, Web Soil Survey Maps How-to
Spring Alfalfa insects Zoom, Emerald Ash Borer with MDC forester Zoom, How Much Lime to Apply?,
Converting Pastures to Cropland, Up To Test? What Does That Mean?, Pesticide Applicator Training,
Alfalfa Summer Insects Zoom, Plan Now for Fall Forage, Potash a Necessary Expense, Brown Marmorated
Stinkbugs

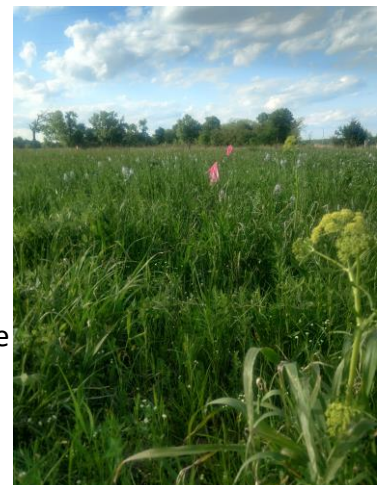
I had individual consultations and farm and home visits for my six counties as follows:

Consumer horticulture – 166	Commercial horticulture – 47	Forages – 394
Crops – 163	Pesticide training – 64	Master gardener – 30

I sent out weekly e-mails to over 550 ag producers to keep them up to date on new research, pest alerts, ag resources and upcoming meetings.

I conducted or assisted with the following research projects in my six-county area:

Forage Fertilizer Plots at Walker Corner, fertilizer applied, photographed and data analyzed
Warm Season Native Prairie Fertilizer Plots west of Deerfield, fertilizer applied
Assisted Dr. Bissonnet with corn residue/corn disease study
Assisted with shattercane herbicide resistance study by collecting seed
Collected SCN soil samples at 17 fields for Dr. Bissonnet project
Assisted with Glypho-safe herbicide efficacy study



Fertilizer plot at a native prairie



Health & Well-being

Kyleigh Sullivan – Human Development and Family Sciences

FOCUS ON KIDS Is a parenting education class for those who are raising their children in separated/divorced households. The class is designed to help parents understand what their children are going through in order to best support them during this transition and to see how their co-parenting behaviors, good and bad, impact their children. **Results:** The majority of participants (87.4%) agreed or strongly agreed that the program was worthwhile, overall. Similarly, most participants agreed or strongly agreed that the program (a) helped them think of new ways to resolved conflicts with their co-parent (90%), (b) had useful ideas for reducing stress for children (92.6%), and (c) offered helpful suggestions to support their children’s relationships with both co-parents (92.6%). Two St. Clair County residents took the class in person during 2021, an additional 17 residents took the online version. **Quotes:** "Great discussion. I learned a lot!" "The presenter was very passionate and knowledgeable. Glad I did this it was helpful."

“Glad I did this – it was helpful.”

WITS Workout Is a pilot program from Illinois State University. This class gives older adults an opportunity to connect socially, engage in intellectual activity, and learn strategies to increase their overall brain health. **Results:** Six classes were held in 2021. One St. Clair participant joined a virtual class. **Quotes:** A participant reported that as a result of this class they would... “Doing more intentional thinking and learning on a daily basis.”



Presented by The University of Missouri | Kyleigh Sullivan MS, CFLE



Health & Well-being

Family Education Nutrition Program –Debbie Dody, Chandra Noteware and Janet Fox

The Supplemental Nutrition Assistance Program Education (SNAP-Education or SNAP-Ed) brought \$9,646,109 in federal funds to Missouri. The funds support engagement with 485,010 Supplemental Nutrition Assistance Program (SNAP) recipients and eligible citizens of Missouri. There were 321,372 direct educational contacts. This year we had 1,383,799 indirect educational contacts through newsletters, health fairs, food pantries, and the Show Me Nutrition helpline.

531 direct and indirect contacts were made in St. Clair County.

Participants in SNAP-Ed learn the importance of making healthier meals and snack choices, eating breakfast more often, are more willing to try new foods, increase their physical activity, and make healthier food choices. Those who practice healthy eating and are physically active are more likely to contribute to a healthy labor force and enjoy a high quality of life throughout the lifespan.

This vital programming effort also reduces healthcare costs over the participant's lifetime, saving taxpayer money in reduced public healthcare benefits and insurance premiums.

The Expanded Food and Nutrition Education Program (EFNEP) brought \$1,626,730 federal funds to Missouri. These funds were used to enroll 796 limited-resource families in nutrition education and meal preparation classes, representing 2,847 family members. Additionally, 2,469 youth were enrolled in EFNEP classes.

3 of these youth and adult participants reside in St. Clair County.

Participants in EFNEP learn the importance of making healthier meals and snack choices, eating breakfast more often, trying new foods, increasing their physical activity, and making healthier food choices. Those who practice healthy eating and are physically active are more likely to contribute to a healthy labor force and enjoy a high quality of life throughout the lifespan.

This vital programming effort also reduces healthcare costs over the participant's lifetime, saving taxpayer money in reduced public healthcare benefits and insurance premiums.

During 2021, 85 youth and 449 adults were served through schools, community groups and agencies. The following is a list of the locations where participants were served in St. Clair County:

Schools	Agencies
Lakeland Elementary	St. Clair County Health Center
Osceola High School	Appleton City WIC

In addition to the numbers, Nutrition Program Associate, Debbie Dody shared this success story demonstrating local impact:

On May 12, 2021 while in Appleton City, MO covering St Clair County WIC - Appleton City, I dropped off some of my business cards to West Central Missouri Community Action Agency (WCMCAA). In the process of doing SNAP applications, many times the family also qualifies for energy assistance through WCMCAA, so I wanted to introduce myself & drop off some cards to make that initial partnership contact. Due to COVID-19, WCMCAA office was closed to the public, but I happened to meet an employee coming out the back door at the end of the day, so she took them instead of me just "dropping them in the box" with no face-to-face interaction. Little did I know that ONE week later, they would refer a gentleman to me to assist with SNAP benefits. Because he has no transportation & is pretty much home bound, he uses the local grocery store contact free shopping & delivery. There was some mix up with his order & the PIN was entered incorrectly. We thought all we had to do was change the PIN....easy, right? Not so much!! When we logged into the system to change his PIN, it was discovered that his date of birth was incorrect. Therefore, we had to call the SNAP Customer Service number. I don't know if anyone else has this problem & I understand that they handle tons of calls, but WOW! After a very long time holding, we finally got to speak to someone & that's how we found out his DOB was incorrect. Without saying that his DOB was wrong, she said to use the DOB on file...OK, we were then able to change his PIN. I have created partnerships with 2 FDS employees & one of them was able to then correct his DOB in their system! WHEW!! Everything was then right in his world...he was SO happy that I was able to help him change his PIN & get groceries! Did I mention that he hadn't been able to order groceries for a MONTH due to the PIN mix-up? THIS is why I LOVE my job!! Not only teaching, but being a resource for so many who may otherwise be frustrated &/or not get the benefits that they qualify for. With permission, I'm sharing a few comments that I received from him via email below:



Health & Well-being

Family Education Nutrition Program –Debbie Dody, Chandra Noteware and Janet Fox (continued)

Thanks a million for your help. I will wait until tomorrow to attempt to use the card but I am sure it will work fine. Fortunately, tomorrow is the home delivery day for the local market. :-)

"I deeply appreciate the efforts you made on my behalf to reconcile the problems. You are a very intuitive problem solver and thorough in your approach. Add those traits to being a delightful personality and we have a crackerjack support person who is kind, patient, and very professional.

Have a wonderful summer and please be safe."

"This morning I placed a new food order from Food Fair in Appleton City... the SNAP order went through without a hitch and the order has been delivered... thanks to both of you. 😊"

You have both earned five gold stars today--- 🌟🌟🌟🌟🌟 😊"

Health and Nutrition – Susan Jones-Hard

Educate:

- Scheduled, recruited for and/or delivered multiple courses in Triad & St. Clair counties

Create

- Developed and distributed social media posts throughout the triad and neighboring counties supporting all program areas.
- Developed and distributed social media posts to promote all Virtual courses.

Connect as Interim County Engagement Specialist

- Continued working with the St. Clair County Extension Council to develop and establish a 4-H program in the county.
- Continued working with the St. Clair County Extension Council and County Commissioners to establish a budget for 2022.
- Worked with the county Extension Council, Regional Director and University of Missouri to promote the need for a full time Nutrition Program Associate/Youth Program Associate shared position.

4. Phone Contacts/Inquiries by Type

County	Health Q	Nutrition Q	Programming Qs	TOTALS
St. Clair	5	2	1	8



County highlights

4-H Youth Development –Kim Hall and Velynda Cameron

4-H fairs and day camps all happened in June and July.

The Crafts & Critters Clover Kids Club participated in exhibit night held in conjunction with the Hickory County exhibit night at the Library in Hermitage. All 3 Clover Kids had projects on display and then on display again at the Osceola Library.

The 4-H informational open house was held the evening of September 30th and was a success.

Thirteen families with youth interested in 4-H attended the meeting, along with three Council members.

About half a dozen adults voiced they would be interested in leading projects, however no one stepped up to commit to the position of club leader.

On November 18 the first meeting of the new community 4-H club, 4-H Heroes, was held at the First Baptist Church in Osceola. The club meets on the third Thursday of every month and currently has 11 Clover Kids, 15 club members and 8 leaders. Council members, Kay-Lynn Lysinger and Sasha Bray, are the club leader and assistant club leader. Members have enrolled in horse, shooting sports, pets, leadership, robotics, photography, bucket calf and arts and crafts projects.



Communities are stronger because of 4-H Youth Development volunteers.

Volunteers have a positive impact where they live and work. They make communities stronger, connect communities to each other, improve community health and increase overall civic involvement. The value of 4-H volunteers extends far beyond the scope of youth development into every part of their community



#MO4HFlatTruman
4h.missouri.edu



County highlights

Missouri State Fair Farm Family

Jim and Stephanie Neuenschwander and family of rural Deepwater were among the families honored during the 62nd annual Missouri Farm Family Day, Aug. 16 at the Missouri State Fair.

The Neuenschwander family was selected as the St. Clair County Missouri Farm Family by University of Missouri Extension in St. Clair County and the local Farm Bureau. The family includes John, Emily and Isaac.

Each year, the fair sets aside a day to recognize farm families from across the state that are active in their communities, involved in agriculture, and/or participate in local outreach and extension programs such as 4-H or FFA.

The Neuenschwander family operates a livestock, crop and beekeeping operation.

The annual event is sponsored by five partner agencies: the Missouri Farm Bureau; the Missouri Department of Agriculture; the Missouri State Fair Commissioners; the MU College of Agriculture, Food and Natural Resources; and MU Extension and Engagement.

The event showcases the impact Missouri Farm Families have on the economy and heritage of the state, said Missouri State Fair Director Mark Wolfe. “These families are involved in agriculture activities in their communities and are active participants in local outreach and extension. As the premier showcase for Missouri agriculture, the Missouri State Fair is most certainly the appropriate place to celebrate these families.”



KEY NUMBERS

Program	Number of Contacts
Social Media Posts - Office	20,991
Telephone Inquiries - Office	244
Walk-In Inquiries - Office	196
Hay & Soil Tests - Office	47



St. Clair County

UM System Footprint in the county in 2021



FY21 county students

14 students

- 10 Undergraduates
- 4 Graduate and professional students
- 11 Full-time students
- 3 Part-time students



County employees and retirees

6 people employed by UM

- 6 Campuses

2 UM retirees and beneficiaries

UM salary and retirement income:
\$214,274

UM state tax revenue: \$6,785

UM federal tax revenue: \$26,260



County alumni

Selected school alumni

- 2 Medicine
- 4 Nursing
- 5 Health Professions
- 3 Dentistry
- 2 Pharmacy
- 6 Veterinary Medicine
- 28 Agriculture
- 12 Engineering
- 6 Law

Alumni teaching K-12

- 9 teachers
- 7.5% of all district teachers
- 1 principal or administrator
- 14.3% of all district principals and administrators



County breakdown

MU

- 11 students
- 85 alumni
- 6 employees

UMKC

- 2 students
- 27 alumni
- 0 employees

Missouri S&T

- 0 students
- 11 alumni
- 0 employees

UMSL

- 1 student
- 1 alumna or alumnus
- 0 employees



County properties and offices

MU Extension in: St. Clair County



County population: 9,370



County services provided

Health care (FY21)

- 56 in-state patients seen at MU Health Care, with \$70,701 of uncompensated care
- 5 in-state patients seen at UMKC School of Dentistry with a statewide average of \$66.18 per patient in uncompensated care
- MU Health Care's Missouri Telehealth Network recorded 75 visits to patients having a ZIP code associated with the county

Extension (2020)

- 2,552 Total educational contacts from MU Extension to residents of the county, including:
- 264 contacts related to productive farming, better gardening, and managing natural resources
- 2,264 contacts related to healthy eating and aging, strengthening families, personal finance, or youth development
- 24 contacts related to starting businesses, developing community leaders, or renewing the local economy



UM System Statewide Footprint

Economic and Community Development Highlights

- In 2019, Business Development Specialists worked with small businesses and entrepreneurs statewide to create or retain 54,494 jobs.



For every dollar invested from 2015 to 2017, the MU Extension Business Development Program has returned \$120 in economic impact for its clients by increasing sales more than \$1.19 billion. For a total impact of \$2.7 billion, the program has generated more than 29,000 jobs and attracted nearly \$347 million in capital investments and \$1.17 billion in government contracts.

- Between FY15 and FY20, UM System brought Missouri more than \$1.27 billion in federal and private research funds, funded primarily from outside the state but spent within the state.



In FY21, UM System was issued 30 patents and filed 60 new U.S. patent applications.

- In FY21, the UM System awarded 722 design and construction project contracts throughout Missouri, for a total investment of \$132.0 million in the state.



In FY21, MU Health Care's Missouri Telehealth Network Show-Me ECHO Program participated in 24,400 hours of case-based discussions with 3,017 community providers located in underserved areas in the City of St. Louis and 111 of the 114 Missouri counties.

Education and Training Provided



50,604 police, fire fighters, and medical professionals attending continuing education (2020)



Agriculture and natural resource programs served 147,623 farmers and related businesses (2020)

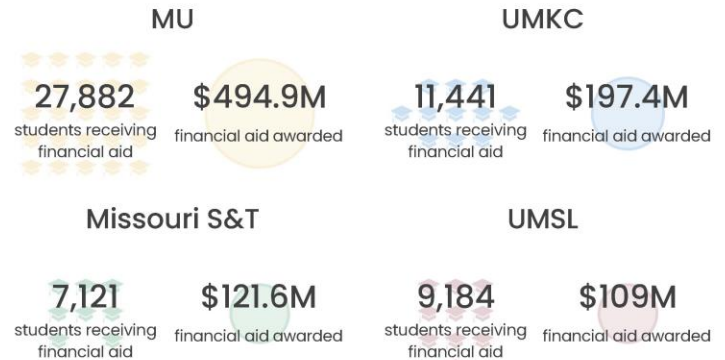


295,444 youth and stakeholder educational contacts in 4-H clubs, schools, camps and other programs (2020)

Education Highlights

FY21 Financial Aid Awards

In FY21, 71.1% of the UM System's 78,208 students received financial aid totaling \$923 million



UM System's MOREnet (Missouri Research and Education Network) provides internet connectivity, access, support and training to 57 higher education institutions (250,187 students), 491 K-12 school districts (850,000 students) and 136 public libraries (serving nearly 3 million Missourians) in 2020.

- UM System awarded 50.4% of the 30,932 Bachelor's or higher degrees awarded by Missouri four-year public institutions in 2020-21.
- UM System awarded 39.2% of the 1,897 research doctorates and 26.4% of the 3,606 professional doctorates awarded by Missouri public and not-for-profit private institutions in 2020-21.
- In 2021, UM System's \$22.5 million in National Science Foundation (NSF) grants represented 84.1% of all NSF grants made to Missouri public colleges and universities.

Supporting the University of Missouri is an investment in the future of Missouri.

The university advances Missouri citizens and communities through its mission of teaching, research, public service, and economic development across our four campuses and University of Missouri Extension.

Prepared in December 2021, based on the best available and most recent data. Data Sources include: Missouri Office of Administration • UM IR • Office of Social and Economic Data Analysis (OSEDA) • Center for Applied Research and Engagement Systems (CARES) • MU • UMKC • Missouri S&T • UMSL • UM System • UM Health Care • MU Extension • US Census Bureau • US Dept. of Health and Human Services • National Science Foundation

