



SHELBY COUNTY YOUTH FAIR

JULY 8-13, 2019

- July 8, Monday** 10:30 a.m. Cat Show
11:00 a.m. Clover Kid Small Animal Show
2:00 p.m. Fashion Revue (Shelbina Villa)
5:00 - 6:30 p.m. Check in 4-H & FFA Exhibits
6:00 - 8:00 p.m. Ham Check in
7:00 p.m. Queen Contest -4-H Fashion Revue (at intermission)
- July 9, Tuesday:** 8:00 a.m. Poultry & Rabbit Registration
8:30 a.m. Poultry Show Rabbit Show
Rabbit Show immediately following Poultry Show
3:00 p.m. Cattle in place (*Cattle must be weigh by 3:00 p.m.*)
5:00 p.m. Bucket Calf Show followed by Jr. Cattle Show
- July 10, Wednesday:** 4:00 p.m. Sheep in place
5:00 p.m. Sheep Show
- July 11, Thursday:** 8:30 a.m. Goats in Place
9:30 a.m. Goat Show
1:00 p.m. Market Hog in place between 1:00-2:00 p.m.
3:00 p.m. Junior Market Hog Show
6:00 p.m. South Shelby FFA-Cake & Homemade Ice Cream
7:00 p.m. Market Livestock Sale
7:00 p.m. 4-H Exhibits Released
8:00 p.m. Building Clean-up
- July 13, Saturday:** 9:00 a.m. Dog Show
9:30 a.m. Horse Show

****CONCESSION STAND ON GROUNDS ALL WEEK SERVED BY
NORTHEAST MISSOURI OLD THRESHERS ASSOCIATION**

TABLE OF CONTENTS

GENERAL RULES.....	4
BUILDING SECURITY SCHEDULE.....	6
BUILDING EXHIBIT ENTRIES.....	6
EXHIBIT LISTS	6-20
PEE WEE SHOW	21
ANIMAL HEALTH REQUIREMENTS FOR EXHIBITION.....	22-24
OWNERSHIP RULES, LIVESTOCK SHOW & SALE, SALE ORDER.....	25
LAST YEARS BUYERS	26
COUNTRY CURED HAM	27
SHEEP SHOW	28
LIVESTOCK AWARDS-SHEEP.....	29
GOAT SHOW	30
LIVESTOCK AWARDS-GOATS.....	31
BUCKET CALF.....	32
BEEF SHOW.....	33
LIVESTOCK SHOW AWARDS-BEEF	34
SWINE SHOW.....	35
LIVESTOCK AWARDS-SWINE	36
RABBIT SHOW.....	37
POULTRY SHOW.....	38
CAT SHOW	39
CLOVER KIDS SMALL ANIMAL SHOW	40
HORSE SHOW	41
DOG SHOW	42

Equal Opportunity is and shall be provided to all participants in Extension programs and activities, and for all employees and applicants for employment on the basis of their demonstrated ability and competence without discrimination on the basis of their race, color, religion, sex, sexual orientation, national origin, age, disability, or status as a Vietnam-era veteran. This policy shall not be interpreted in such a manner as to violate the legal rights of religious organizations or military organizations associated with the armed forces of the United States of America."

NOTICE

1. The Shelby County Fair will be a reciprocating fair for 4H/FFA shows. This policy means Shelby County Fair shows are open to those counties that have equally reciprocating 4H/FFA shows. For a county to be considered reciprocating, Shelby County youth exhibitors are treated the same as in county exhibitors when dealing with ribbons, premiums, trophies and entry fees. This policy also states that if a mistake is made in participation of an exhibitor from a non-reciprocating county then that exhibitor will forfeit all stall fees, awards, and premiums.
2. An exhibitor's county is determined by 4H Club or FFA Chapter membership county. If the member participates in a county fair livestock sale, that county shall be determined as their home county.
3. The following list provides shows that are pre-approved as reciprocating. If you feel you are from a county that you believe is reciprocating and is not listed, you may contact the Shelby County Youth Fair Board by June 20th and provide a copy of your fair book for review and determination of eligibility to show.

Pre-Approved Reciprocating Shows

- Audrain County Fair
- Chariton County Fair
- Monroe City FFA Show
- Monroe County Fair
- Lincoln County Fair
- Sullivan County Fair

Counties **NOT** Considered to have Reciprocating 4H/FFA Jr Shows

- Adair County Fair
- Boone County Fair
- Clark County Fair
- Knox County Fair
- Lewis County Fair
- Linn County Fair
- Macon County Fair
- Marion County Fair
- Pike County Fair
- Putman County Fair
- Ralls County Fair
- Randolph County Fair
- Schuyler County Fair
- Scotland County Fair

YOUTH FAIRBOARD COMMITTEE

Livestock Superintendent:

Goat Superintendent – Katheryn Coon
Sheep Superintendent – Gina Pollard
Beef Superintendent – Kyle Harvey
Ham Superintendent – Pat Greenwell
Swine Superintendent – Matt Beach
Assistant – Scot Shively
Cat Show Superintendent –
Poultry Superintendent – Jami Snow
Rabbit Superintendent – Andrea Carpenter

Youth Fair Board:

Harold Eckler, President
Kathryn Coon, Vice President
Jenny Bradley, Treasurer
Pat Greenwell, Secretary

Members:

Charlene Brengle	Shana Threlkeld
Matt Beach	Jami Snow
Denise Shockley	Scot Shively
Melissa Ratliff	Emily Maddex
Mitch Schmidt	Tim Larrick

Stephanie Femrite – 4-H Youth Specialist
Daniel Mallory – Livestock Specialist

JUNIOR ACHIEVEMENT SHOW

GENERAL RULES

1. 4-H Members must be in good standing with their club to be eligible to exhibit. (Attend 6 Club Meetings and meet other club & 4-H Council requirements). Any exhibit or exhibitor that does not meet exhibition guidelines or requirements may be decreased in ribbon rating or disqualified completely, at the discretion of the judge or superintendents.
2. Judges will award blue, red, and white ribbons according to merit of the exhibit. NO ribbon will be awarded to any exhibit that the judge considers to be unworthy of a ribbon.
3. Exhibitors will be paid premium money on no more than six (6) entries in a class. Total premium money divided by total points will give money value of each point. Point value shall not exceed 40 cents.
4. Exhibit must be made by the 4-H member since the fair of the previous year. Members must be enrolled in the projects to exhibit.
5. FFA membership eligibility should include enrollment in current FFA program or Junior High Ag program, which is in accordance with state FFA guidelines.
6. It will be left to the judge's discretion for selecting state fair eligible exhibits on indoor exhibits, regardless whether exhibitor is present for self-evaluation. (See rule #13)
7. Use of kits is not encouraged in 4-H projects.
8. Every precaution shall be taken to protect exhibits, but neither the Fair Board nor the Youth Department will be responsible for any losses or damage to the exhibits.
9. Fair Exhibits are **encouraged** to remain until Thursday at 7:00 p.m.

Open to members of Shelby County 4-H Club or FFA member at North or South Shelby Schools.
10. Clover Kids will be allowed to exhibit or show project work. They will receive one-dollar (\$1.00) premium money and will receive participation ribbons. They will not compete with 4-H members 8-19. They will not be allowed to sell livestock at sale. All Clover Kid members will exhibit in classes 0001. Rules for Clover Kid Animals see page 40.
11. Fair participants may submit a formal letter to the youth fair board to be excused for a once in a life time activity. (Example: National FCCLA participants) One Time Exemption allows members to still exhibit their projects and sell one item at the sale. A letters must be submitted to the Extension Office by May 15th.
12. If a member is unable to attend and show their inside exhibits they must fill out an Absentee Interview Judging Form on the project and have the report attached to the project. In case of absentee they are not eligible for State Fair. Forms are at the Extension Office.
13. If someone fails to do a written report, that individual will receive no premium or ribbon.

14. Notebooks, Posters (flat only; do not fasten items to the poster), File card systems will be accepted from any project. However, any notebooks, posters, or file card systems will be on display in such a way that fairgoers will be able to touch, handle, and review them.
15. Where the exhibit list states, "any item made", the 4-H member may display any item made in that project. This includes notebooks, file cards, photo displays, posters or educational displays. Items which do not comply with size and other specifications, will not receive a premium or ribbon.

Regardless of project the following dimensions must be used:

Posters- No larger than 14"x 22", (flat only) do not fasten three-dimensional items to the poster.

Working models or Display – These exhibits should show how things actually work (cutaway-sections of motors or computers) or can be used to help people identify parts such as, parts of a motor or computer. Many times these exhibits are considered: hands-on" and can be handled by visitors. Working models should require floor space no larger than 14" X 22" X 30.

Scrapbooking -exhibits should be only 1 page 1 side representative of the complete scrapbook.

- Size not exceed 12" x12'
- All pages should be in clear protective sleeve or clear zipper bag. Do not frame.

Photo Display

1. Photos must be mounted on 8" x 10" solid mat board.
2. The mounting surface should be mat board.
3. Photographs must be 8" x 10" or smaller, with no more than four photos per mat board.
4. The mounted photo should be placed in a clear plastic 8 1/4 x 10 1/2 inch sleeve.

PLEASE NOTE:

- "Solid" requires that there are no cutouts or other holes in the mat board, either around or behind the photo. Mount photos on the smoothest side of the mat board.
- "Mat board" is a specific material. Intended to keep the photo from getting bent or destroyed. It is not cardboard, foam core, poster board, etc.
- Mat board may be easily purchased at the Shelby Co. Extension Office, to protect them from dust, humidity, etc.
- Include name, address and county on the back of each photo.

All exhibits are subject to the FULL State Fair Photography guidelines.

They are posted online at <http://4h.missouri.edu/go/events/statefair/photoguidelines.pdf>.

Building Security Schedule:

There should be at least one adult from each club at the scheduled time present.
The schedule is as follows:

Wednesday, July 10:

4:30 - 9:00 p.m. - Prairie

Thursday, July 11:

4:30 –7:00 p.m. –Lentner Pioneers 4-H

7:00 – 9:00 - cleanup 4-H building - Lucky Charms

Exhibits will be released on Thursday, July 11, at 7:00 p.m..

- **PLEASE MAKE ARRANGEMENTS FOR SOMEONE TO PICK EXHIBITS UP.**

Clubs should check in exhibits according to this schedule:

6:00 - 8:00 p.m.	Ham Check in
5:00 p.m.	North Shelby FFA & South Shelby FFA
5:00 p.m.	Lentner Pioneers & Prairie
5:30 p.m.	Leonard Caring Clovers & Lucky Charms

Judging Stops at 6:30 p.m.

NOTE: Workers and Judges should be present by 4:30 p.m.

All judging will be done by self-evaluation. Only judges, workers and members checking exhibits in are permitted in the hall. Parents should wait in designated waiting areas.

The learning experience of a boy or girl is greatly enhanced with the opportunity to self-evaluate. The term self-evaluation means that the member and the judge have the opportunity to go over the article to be evaluated. Members should be prepared to explain to the judge methods used and why they were selected, reason for choosing the article, how or where it will be used, problems encountered and satisfaction gained. Together the member and the judge determine what ribbon the article should receive. This procedure gives the members a greater sense of personal involvement than does the judging of exhibits by an adult.

1. Members must be enrolled in a project to exhibit.
2. Each member or Clover Kid may enter six (6) items in each class.
3. Each exhibitor will be paid premium money on no more than six (6) entries in a class.
4. Large, hard-to-transport items, if selected **cannot** be taken to State Fair.
5. For 4-H exhibitors - **Only 4-H work can be exhibited. School, Church, and Scouts**, cannot be shown as 4-H Project Work.
6. Clover Kids cannot show or sell animals (including showing for siblings).

AEROSPACE EDUCATION

Class	Point Value
AE811 AEROSPACE UNIT 1: any item made	3 2 1
AE812 AEROSPACE UNIT 2: any item made.....	3 2 1
AE813 AEROSPACE UNIT 3: any item made.....	3 2 1
AE814 AEROSPACE UNIT 4: any item made	6 5 4

(Display on launch pad or display board not more than 18" square in an upright position.)

AGRONOMY

Class	Point Value
AG982 FIELD CROPS 1: any item made	3 2 1
AG983 FIELD CROPS 2: any item made	3 2 1
AG981 FIELD CROPS 3 any item made	3 2 1

AMPHIBIANS AND REPTILES

Class	Point Value
AR611 AMPHIBIANS & REPTILES: any item made	3 2 1
(No live animals)	

ARTS AND CRAFTS

Class	Point Value
AC311 ARTS AND CRAFTS: any item made	3 2 1
AC312 ADVANCED VISUAL ARTS LEVEL 1: any item made.....	3 2 1
AC313 ADVANCED VISUAL ARTS LEVEL 2: any item made.....	3 2 1
AC314 ARTS AND COMPUTERS: any item made.....	6 4 2
AC315 SCRAPBOOKING: any item made	6 4 2

***No more than 4 Scrapbooking Pages may qualify for State**

Scrapbooking exhibits should be only 1 page1 side representative of the complete scrapbook.

- If more than one page is submitted for an exhibit, the exhibit will be disqualified.
- Size not to exceed 12" x 12".
- All pages should be in clear protective sleeve or clear zipper bag. Do not frame.

BEEF

Class	Point Value
BF121 BEEF 1: any item made	3 2 1
BF122 BEEF 2: any item made	3 2 1
BF123 BEEF 3: any item made	3 2 1
BC135 BUCKET CALF: any item made	3 2 1

BEEKEEPING

Class	Point Value
EN924 BEEKEEPING 1.....	9 6 3
EN925 BEEKEEPING 2.....	9 6 3
EN926 BEEKEEPING 3.....	9 6 3

BICYCLE

Class	Point Value
BY731 BICYCLE: UNIT 1: any item made.....	3 2 1
BY732 BICYCLE: UNIT 2: any item made	3 2 1

BUTTERFLY WINGS

Class	Point Value
EN927 BUTTERFLY WINGS any item made.....	3 2 1

CAKE DECORATING

Decorated Cakes – The use of forms or pans is recommended. Where large wedding cakes or specialty items are made, send **only** the top layer of the cake. Cakes should not exceed 13” in height and at the base. Cake boards should not exceed 1” margin on each side of the cake pan or form and is considered in the 13” base requirement. Cake boards should be sturdy, especially if using a cake pan. **Must only use Royal icing, rolled fondant or commercial project like (Dapp) that will harden and preserve the decorated cake.** (NO REAL CAKES, BUTTER CRÈME ICING OR TUBE/GEL ICING WILL BE ACCEPTED!) Displays containing these items will be considered ineligible and will be rejected.

Cakes with candy decorations are allowed; however, avoid using candy that melts (e.g., M & Ms, candy canes, etc.). Cakes that have melting items will be removed from display



Wilton Enterprises is a supporter of this project and will award special prizes.

Goals & Guidelines -- Resource: Wilton Yearbook.

Beginning Cake Decorating:

- Baking a cake
- Frosting the cake
- Making butter cream frosting
- Cake decorating terminology
- The basic decorating tubes and uses
- Making simple borders and simple flowers
- Different types of cake decorating equipment and their uses
- Making a decorated cake with a simple decoration (star, leaf, writing tubes)

Intermediate Cake Decorating:

- Sugar molding
- Elaborate borders
- Designing a birthday cake (or any for special holidays)
- Making roses, lilies, mums and other more advanced flowers

Advanced Cake Decorating: (Could take 2 years or more for this)

- Additional elaborate borders Royal (or hard) icing and its uses
- Lattice work and lace work Royal icing flowers-filigree work
- Gum paste Making a tiered cake and petit fours
- Fondant icing Rolled fondant icing or candy clay flowers
- Brush work Work on miniatures (such as mints, petit fours, sugar cubes)



Class	Point Value
CD361 CAKE DECORATING -BEGINNER: any item made	3 2 1
CD362 CAKE DECORATING-INTERMEDIATE: any item made ..	6 4 2
CD363 CAKE DECORATING - ADVANCED: any item made.....	9 6 3

*** No more than 6 Cakes may qualify for State**

CAT CARE

Class	Point Value
CA177 CAT CARE UNIT 1: any item made.....	3 2 1
CA178 CAT CARE UNIT 2: any item made.....	3 2 1
CA179 CAT CARE UNIT 3 any item made.....	3 2 1

CHILD DEVELOPMENT

Examples: Toys, educational games, educational displays, etc.

Class	Point Value
CH411 CHILD DEVELOPMENT UNIT 1: any item made	3 2 1
CH412 CHILD DEVELOPMENT UNIT 2: any item made	3 2 1
CH413 CHILD DEVELOPMENT UNIT 3: any item made.....	6 4 2

CITIZENSHIP

Class	Point Value
CI200 PUBLIC ADVENTURES: any item made.....	3 2 1



CLOTHING

CLASS

- CL521 **Sewing I**-Any garment or non-garment using woven or knit material and seam finishing's
- CL522 **Sewing II**-Any garment made using personalized fabric, patterns, clothing lines, color, etc.
- CL523 **Sewing III**-Any garment and/or accessories coordinated or any educational display showing information or examples from project literature activity book. Exhibits may also include garments made from customized patterns.
- CL524 **Buying Clothes I**- Display, garments, or notebook of purchased clothing, showing knowledge and learning of clothing care, selection, factors relating to overall personal appearance

Consult specific member and leader project materials for each unit to determine appropriate age and skill related exhibit ideas. Items should reflect the skills learned in a given unit
(Be sure to double tag all clothing items).

Class	Point Value
CL521 Sewing LEVEL1: any item made	3 2 1
CL522 Sewing LEVEL2: any item made	3 2 1
CL523 Sewing LEVEL 3: any item made.....	3 2 1
CL524 Buying Clothes -LEVEL 1: any item bought or made.....	3 2 1

**Buying Clothes –Level 1– is a “non-construction” unit; so 4-H members will not make garments.

Exhibits can include outfits coordinated by the member, educational displays, etc.



CLOVER KIDS

All members under the age 5-8 exhibit in these classes.

Class

0001 Clover Kids: any item made

May enter six (6) items only. 4-H projects exhibited only. No School, or Church projects.

Clover Kids will be able to exhibit small animals at the Clover Kid Small Animal Show

CLOWNING

EXAMPLES: Clown costumes and accessories, photo story, etc.

Class

Point Value

CW231 CLOWNING: any item made..... 3 2 1

COMMUNICATIONS

Class

Point Value

CM237 COMMUNICATIONS 1: any item made..... 3 2 1

CM238 COMMUNICATIONS 2: any item made..... 3 2 1

CM239 COMMUNICATIONS 3: any item made..... 3 2 1

EXAMPLES: Notebook showing program developed by youth, finished product, educational displays, photo displays.

COMPUTERS

Class

Point Value

CP895 SCRATCH: any item made..... 3 2 1

CP896 ALICE: any item made 3 2 1

CP897 OTHER PROGRAMMING LANGUAGES or COMPUTER PROGRAMS

CONSUMER SAVVY

Class

Point Value

CS431 CONSUMER 1: any item made..... 3 2 1

CS432 CONSUMER 2: any item made..... 3 2 1

CS433 CONSUMER 3: any item made..... 3 2 1

CROCHET

Class

Point Value

CR321 CROCHET: any item made 3 2 1

DAIRY

Class	Point Value
DA131 DAIRY UNIT 1: any item made.....	3 2 1
DA132 DAIRY UNIT 2: any item made.....	3 2 1
DA133 DAIRY UNIT 3: any item made.....	3 2 1
DA134 JUDGING DAIRY CATTLE: any item made.....	3 2 1
BC135 BUCKET CALF: any item made.....	3 2 1

DOGS

Class	Point Value
DO171 DOG: any item made	3 2 1
DO172 DOG: any item made.....	3 2 1
DO173 DOG: any item made	3 2 1

ELECTRICITY

Use plans from any source. Items should be made in accordance with the National Electrical Code. Consult power suppliers or electricians for code requirements. Battery operated items are also eligible exhibits. Batteries should be disconnected or have a piece of black electrical tape placed on the ends.

Class	Point Value
EL831 ELECTRICITY 1: any item made	3 2 1
EL832 ELECTRICITY 2: any item made	3 2 1
EL833 ELECTRICITY 3: any item made	6 4 2
EL834 ELECTRICITY 4: any item made	6 4 2

ENERGY

Class	Point Value
EG861 POWER OF THE WIND.....	3 2 1

ENTOMOLOGY



(Boxes must be No larger than 18" long x 24" wide x 3 1/2" deep to fit into the display racks. Plexiglas or plastic covers are preferred. No handles or knobs.) The insects should be named, labeled, and mounted so the boxes can be displayed horizontally. Securely fasten display cover with tape or screws. If a member's entomology collection is displayed in more than one box, the member may send only one box for display.

Class	Point Value
EN921 ENTOMOLOGY 1: any item made.....	6 4 2
EN922 ENTOMOLOGY 2: any item made.....	6 4 2
EN923 ENTOMOLOGY 3: any item made.....	9 6 3

ENTREPRENEURSHIP

Class	Point Value
EP442 ENTREPRENEURSHIP 1	3 2 1
EP443 ENTREPRENEURSHIP 2	3 2 1
EP444 ENTREPRENEURSHIP 3	3 2 1

EXPLORING 4-H (Grade 2-4)

Class	Point Value
EX261 EXPLORING THE TREASURES OF 4-H: any item made...	3 2 1

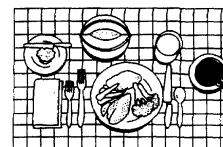
FILMMAKING

Class	Point Value
FM270 FILMMAKING: any item made	3 2 1

FINANCIAL LITERACY

Class	Point Value
FC421 FINANCIAL LITERACY 1: Any item made.....	3 2 1
FC422 FINANCIAL LITERACY 2: Any item made.....	3 2 1

FOOD NUTRITION



Exhibitors must adhere to the following rules:

1. Food must be of reasonable quality to keep more than a week. Do not send food items which will spoil quickly such as casseroles, pizza, cream pies, items made with cream cheese, etc.
2. Submit food items on paper or disposable plates. Plastic wrap will be removed so drying of the food will extend display life of the product and food items will be removed from plates and displayed as part of a bakery display. Individual tags will be displayed separately. **Please do not send expensive or keepsake containers.**
3. No samples or recipes are needed with any food exhibits.
4. Perishable food exhibits do not need a second identification label.
5. Biscuits, cookies, muffins and other small items should be **four per plate**. Cakes should be exhibited in mini-versions (portions of 1/3 to 1/4 of a larger total product). A representative sample of each will be displayed.

Class	Point Value
FN551 FOODS 1: any item made.....	3 2 1
FN552 FOODS 2: any item made.....	3 2 1
FN553 FOODS 3: any item made.....	3 2 1
FN554 FOODS 4: any item made.....	3 2 1
FS566 FOOD SCIENCE 1: any item made	3 2 1
FS567 FOOD SCIENCE 2: any item made	6 4 2
FS568 FOOD SCIENCE 3: any item made	6 4 2
FS569 FOOD SCIENCE 4: any item made	6 4 2
FN561 MICROWAVE MAGIC 1: any item made	6 4 2
FN562 MICROWAVE MAGIC 2: any item made	6 4 2
FN563 MICROWAVE MAGIC 3: any item made	6 4 2
FN564 MICROWAVE MAGIC 4: any item made.....	6 4 2
FN557 INTERNATIONAL FOODS :any item made.....	6 4 2

FP500 FREEZING.....	6	4	2
FP501 DRYING.....	6	4	2
FP502 BOILING WATER.....	6	4	2
FP503 PRESSURE CANNING.....	6	4	2

BREADS

No samples are needed with any food item. Bread products should be displayed in mini versions (portions of 1/3 to 1/4 of a larger total product). **Please send items of disposable plates only, unless it is a gift package. Please do not send expensive or keepsake containers.**

Class	Point Value
FN581 BREADS 1: any item made	3 2 1

FORESTRY

EXAMPLES: Educational displays, display boards of leaf, twig, and wood samples, 3-D models. etc..

Class	Point Value
FO931 FORESTRY 1: any item made	6 4 2
FO932 FORESTRY 2: any item made	6 4 2
FO933 FORESTRY 3: any item made	6 4 2

GEOLOGY

Boxes must be no larger than 18” long X 24” wide and 3 ½ “ deep to fit in display racks. Plexiglas or plastic covers are preferred. Rocks should be labeled and mounted so the boxes can be displayed. **Rocks need to be attached in the box securely.** If a member's collection is displayed in more than one box, the member may send only one box for display. No knobs or handles. Boxes will be displayed upright in racks.

Class	Point Value
GG941 GEOLOGY: any item made	6 4 2

GEOSPATIAL

Class	Point Value
GS991 GEOSPATIAL 1: any item made.....	3 2 1
GS992 GEOSPATIAL 2: any item made.....	3 2 1
GS993 GEOSPATIAL 3: any item made.....	3 2 1

GLOBAL EDUCATION

Class	Point Value
GE221 GLOBAL EDUCATION: any item made	3 2 1

GOATS

Class	Point Value
GA125 MEAT GOAT 1: Any item made	3 2 1
GA126 MEAT GOAT 2: Any item made.....	3 2 1
GA127 MEAT GOAT 3: Any item made.....	3 2 1
GA136 DAIRY GOAT 1: Any item made.....	3 2 1
GA137 DAIRY GOAT 2: Any item made.....	3 2 1
GA138 DAIRY GOAT 3: Any item made.....	3 2 1

HEALTH / FITNESS

EXAMPLES: Educational displays, photo stories, sports equipment made by the 4-H member.

Class	Point Value
HF711 BOWLING: any item made	3 2 1
HF712 GOLF: any item made	3 2 1
HF771 FIRST AID: any item made.....	3 2 1
HF772 STAYING HEALTHY: any item made	3 2 1
HF773 KEEPING FIT: any item made.....	3 2 1
HF775 MOVE ACROSS MISSOURI (MOVE):any item made.....	3 2 1

HOME ENVIRONMENT

All items that are to be hung must have a hanger. EXAMPLES: Decorative items, home accessories, storage items, educational displays, etc.

Class	Point Value
HE471 HOME ENVIROMENT: 1 any item made	3 2 1
HE472 HOME ENVIROMENT: 2 any item made.....	3 2 1
HE473 HOME ENVIROMENT: 3 any item made.....	3 2 1
HE474 HOME ENVIROMENT: 4 any item made.....	6 4 2

HORSE

Class	Point Value
HS140 HORSELESS HORSE & HORSE KNOWLEDGE: any item made.....	3 2 1
HS141 HORSE RIDING: any item made.....	3 2 1

HORTICULTURE

FLOWERS

Live plants or cut specimens must be displayed in a container no larger than 8" in diameter. Exhibitor must have grown the flowers used in the exhibit. May be fresh or dried.

Class	Point Value
HO961 FLORICULTURE 1: any item made or grown.....	3 2 1
HO962 FLORICULTURE 2: any item made or grown.....	3 2 1
HO963 FLORICULTURE 3: any item made or grown.....	3 2 1
HO964 FLORICULTURE 4: any item made or grown.....	3 2 1



GARDENING (Fruit and Vegetables)

The number in parentheses is the number of items in an exhibit. The exhibitor must have grown the vegetables. The following guidelines should be followed:

1. Use disposable containers (paper plates or boxes) to display the items.
2. Vegetables must be of reasonable quality to keep more than a week.
3. Vegetables will be displayed as a larger farmer’s market display – tags will be displayed separately.
4. Vegetable items do not need a second identification label.

Class	Point Value
HO971 GARDENING 1: any item grown.	3 2 1
HO972 GARDENING 2: any item grown.	3 2 1
HO973 GARDENING 3: any item grown.	6 4 2
HO974 GARDENING 4: any item grown.	6 4 2



- | | |
|-----------------------|----------------------------|
| Potatoes (4) | Watermelon (1) |
| Onions - dry (4) | Cantaloupe (1) |
| Tomatoes (4) | Peppers (4) |
| Pumpkin (1) | Egg Plant (2) |
| Summer Squash (2) | Beets (4) |
| Winter Squash (1) | Other Vegetable (1) larger |
| Slicing Cucumbers (4) | (4) smaller |

***Numbers indicate how many vegetables put on a plate**

KNITTING

Class	Point Value
KN331 KNITTING : any item made	3 2 1

LANDSCAPE DESIGN

LD975 LANDSCAPE DESIGN 1	3 2 1
LD965 LANDSCAPE DESIGN 2	3 2 1
LD977 LANDSCAPE DESIGN 3	6 4 2

LEADERSHIP

Class	Point Value
LD271 STEP UP TO LEADERSHIP 1: any item made.....	3 2 1
LD272 STEP UP TO LEADERSHIP 2: any item made.....	3 2 1
LD273 STEP UP TO LEADERSHIP 3: any item made.....	6 4 2

LIVESTOCK JUDGING

Class	Point Value
LJ117 LIVESTOCK JUDGING any item made.....	3 2 1

MEATS - COUNTRY CURED HAMS

Class	Point Value
ME114 COUNTRY CURED BACON: any item made.....	6 4 2
ME115 COUNTRY CURED HAM: any item made.....	6 4 2
ME116 MEAT EVALUATION: any item made.....	6 4 2

OUTDOOR ADVENTURES

Class	Point Value
OA761 HIKING 1: any item made.....	3 2 1
OA762 CAMPING 2: any item made.....	3 2 1
OA763 BACKPACKING EXPEDITIONS: 3 any item made.....	3 2 1

PETS

Class	Point Value
PE101 PETS 1: any item made.....	3 2 1
PE102 PETS 2: any item made.....	3 2 1
PE103 PETS 3: any item made.....	3 2 1
PE104 GUINEA PIGS (Cavies)	3 2 1

PHOTOGRAPHY

Photo Display

1. Photos must be mounted on 8" x 10" solid mat board.
2. The mounting surface should be mat board.
3. Photographs must be 8" x 10" or smaller, with no more than four photos per mat board.
4. The mounted photo should be placed in a clear plastic 8 1/4 x 10 1/2 inch sleeve.

PLEASE NOTE:

- "Solid" requires that there are no cutouts or other holes in the mat board, either around or behind the photo. Mount photos on the smoothest side of the mat board.
- "Mat board" is a specific material. Intended to keep the photo from getting bent or destroyed. It is not cardboard, foam core, poster board, etc.
- Mat board may be easily purchased at the Shelby Co. Extension Office, to protect them from dust, humidity, etc.
- Include name, address and county on the back of each photo.

All exhibits are subject to the FULL State Fair Photography guidelines.

They are posted online at <http://4h.missouri.edu/go/events/statefair/photo guidelines.pdf>.

Class	Point Value
PH351 PHOTOGRAPHY 1:	3 2 1
PH352 PHOTOGRAPHY 2:	6 4 2
PH353 PHOTOGRAPHY 3:.....	6 4 2

Must use photos taken during current 4-H Year.

*** No more than 7 Photos may qualify for State**

POULTRY

Class	Point Value
PO151 POULTRY 1: any item made	3 2 1
PO152 POULTRY 2: any item made	3 2 1
PO153 POULTRY 3: any item made	3 2 1

PUBLIC SPEAKING

Class	Point Value
PS242 PUBLIC SPEAKING: any item made	3 2 1

QUILTING

Class	Point Value
QU341 QUILTING 1: any item made.....	3 2 1
QU342 QUILTING 2: any item made.....	3 2 1
QU343 QUILTING 3: any item made.....	3 2 1
QU344 QUILTING 4: any item made.....	3 2 1
QU345 QUILTING 5: any item made.....	6 4 2
QU346 QUILTING 6 : any item made	6 4 2

RABBITS

Class	Point Value
RB111 RABBITS 1: any item made.....	3 2 1
RB112 RABBITS 2: any item made.....	3 2 1
RB113 RABBITS 3: any item made.....	3 2 1

ROBOTICS

Class	Point Value
RO881 JUNK DRAWER ROBOTS 1: any item made	3 2 1
RO882 JUNK DRAWER ROBOTS 2: any item made.....	3 2 1
RO883 JUNK DRAWER ROBOTS 3 any item made	3 2 1
RO884 ROBOTICS 1 – EV3: any item made.....	3 2 1
RO885 ROBOTICS 2 EV3N More: any item made.....	3 2 1
ADDITIONAL ROBOTICS PLATFORMS: any item made.....	3 2 1

SCRAPBOOK (4-H Club Scrap book)

Class	Point Value
356X CLUB SCRAPBOOK.....	12 8 4

SELF-DETERMINED

Class	Point Value
SD950 SELF-DETERMINED - Cituzenship: any item made.....	3 2 1
SD951 SELF-DETERMINED - Healthy Living: any item made	3 2 1
SD952 SELF-DETERMINED - Science: any item made.....	3 2 1

SHEEP

Class	Point Value
SH161 SHEEP 1: any item made.....	3 2 1
SH162 SHEEP 2: any item made.....	3 2 1
SH163 SHEEP 3: any item made.....	3 2 1

SHOOTING SPORTS

EXAMPLES: Photo display, outdoor clothing made by exhibitor, hunting equipment or aids, educational displays. No live ammunition and no points on arrows.

Class	Point Value
SS740 SHOOTING SPORTS SAFETY: any item made.....	3 2 1
SS741 ARCHERY: any item made.....	3 2 1
SS742 AIR AND PELLET RIFLE: any item made.....	3 2 1
SS743 SMALLBORE RIFLE .22: any item made	3 2 1
SS744 AIR PISTOL: any item made	3 2 1
SS745 SHOTGUN: any item made.....	3 2 1
SS747 SMALL BORE PISTOL: any item made	3 2 1
SS748 MUZZLE LOADING: any item made	3 2 1
SS749 HUNTING AND OUTDOOR SKILLS: any item made.....	3 2 1
SS990 WESTERN HERITAGE & COWBOY SHOOTING:.....	3 2 1

SMALL ENGINES

Examples: Educational displays or working models. No larger than 22" X 28".

Class	Point Value
SE851 SMALL ENGINES 1: any item made	3 2 1
SE852 SMALL ENGINES 2: any item made	3 2 1
SE853 SMALL ENGINES 3: any item made	6 4 2

SOIL AND WATER SCIENCE

Class	
SW916 SOIL AND WATER SCIENCE 1	3 2 1
SW917 SOIL AND WATER SCIENCE 2	3 2 1
SW918 SOIL AND WATER SCIENCE 3	3 2 1

SPORTSFISHING

Class	Point Value
SF725 SPORTFISHING 1: any item made.....	3 2 1
SF726 SPORTFISHING 2: any item made	3 2 1
SF727 SPORTFISHING 3: any item made	3 2 1

SWINE

Class	Point Value
SW181 SWINE: any item made	3 2 1

THEATRE ARTS

Class	Point Value
TA251 THEATRE ARTS 1: any item made	3 2 1
TA252 THEATRE ARTS 2: any item made	3 2 1

TA253 THEATRE ARTS 3: any item made 3 2 1

TRACTOR

Class

AT820 TRACTOR 1:3 2 1
AT821 TRACTOR 2: 3 2 1
AT822 TRACTOR 3:.....3 2 1
AT823 TRACTOR 4:3 2 1

VETERINARY SCIENCE

Class

Point Value

VS191 VETERINARY SCIENCE 1: any item made..... 3 2 1
VS192 VETERINARY SCIENCE 2: any item made..... 3 2 1
VS193 VETERINARY SCIENCE 3: any item made..... 3 2 1

WELDING

Class

Point Value

WE846 WELDING: any item made 6 4 2

Due to limited outdoor exhibit space, large welded items may not be accepted at the State Fair.

WILDLIFE

Class

Point Value

WI724 WILDLIFE CONSERVATION 1: any item made 3 2 1
WI721 WILDLIFE CONSERVATION 2: any item made 3 2 1
WI722 WILDLIFE CONSERVATION 3: any item made.....3 2 1

WOODWORKING

Use plans from any source.

Class

Point Value

WO871 WOODWORKING 1: any item made..... 3 2 1
WO872 WOODWORKING 2: any item made..... 6 4 2
WO873 WOODWORKING 3: any item made..... 6 4 2
WO874 WOODWORKING 4: any item made..... 9 6 3

FFA FARM MECHANICS EXHIBIT



Entries must be in place by 5 p.m. Monday, July 8, 2019 and must be picked up on Thursday, July 11 at 7:00 P.M. Entries will be judged on the basis of workmanship, design, safety and appearance.

Each exhibitor is limited to six entries per class, except horticulture where 6 entries are allowed. Articles must be painted or properly treated and must be cleaned and in presentable condition even though they may have been used.

The points assigned to projects are based upon the amount and difficulty of the work involved and the cost of materials. The points given are for average projects and may be adjusted up or down when a project is unusual in size and difficulty, and it appears necessary in order to keep the points in balance.

<u>CLASS</u>		<u>POINT VALUE</u>
FFA	1 Utility trailer	30 20 10
FFA	2 Bale trailer	60 40 20
FFA	3 Livestock trailer	75 50 25
FFA	4 2 axle trailer	45 30 15
FFA	5 Deer Stand	9 6 3
FFA	6 Wagon.....	45 30 15
FFA	8 Scraper blade	45 30 15
FFA	9 Big bale carrier	30 20 10
FFA	10 Barrel feed trough.....	9 6 3
FFA	11 Post Puller.....	6 4 2
FFA	12 Log spitter.....	24 16 8
FFA	13 Hay feeder.....	30 20 10
FFA	14 Feed bunk (wood).....	24 16 8
FFA	15 Sheep trough (wood)	9 6 3
FFA	16 Picnic table (wood).....	12 8 4
FFA	17 Lawn Swing with frame	12 8 4
FFA	18 Welding table.....	9 6 3
FFA	19 Sawhorse (pair)wood or metal.....	6 4 2
FFA	20 Jackstand (pair).....	6 4 2
FFA	21 Car ramp (pair)	6 4 2
FFA	22 Engine stand	9 6 3
FFA	23 Gate.....	9 6 3
FFA	24 Miscellaneous	Assigned
FFA	24A Scrapbook	12 8 4

CROPS

Plants (small grain, legume, grass, soybeans) 3" bundle			
Grains (small grain, soybeans) 1 gallon container		Corn - 6 ears/1 stalk	Hay - 6" slab
FFA	25	Corn production.....	6 4 2
FFA	26	Soybean production	6 4 2
FFA	27	Small Grain (break out wheat, oats, milo).....	6 4 2
FFA	28	Legumes & Grasses	6 4 2

CROPS continued

FFA	29	Legume Hay.....	6	4	2
FFA	30	Grass Hay	6	4	2

ELECTRICITY

FFA	36	Projects made using electrical materials.....	6	4	2
-----	----	---	---	---	---

HORTICULTURE

FFA	31	Bedding Plants (at least 6 plants).....	6	4	2
FFA	32	Vegetables	3	2	1
		(Any home grown item - use 4-H guidelines)			
FFA	33	Flowering Pots.....	6	4	2
		(1 to 3 plants in 6" pots or hanging baskets)			
FFA	34	Foliage Plants	6	4	2
		(1 to 3 plants arranged in 6" pots or hanging baskets)			
FFA	35	Flower Arrangement.....	6	4	2

METAL

FFA	45	Pot Hanger	3	2	1
-----	----	------------------	---	---	---

SMALL ENGINES

FFA	37	Any engines overhauled, rebuilt & repainted.....	6	4	2
-----	----	--	---	---	---

WOODWORKING

FFA	39	Bird House.....	3	2	1
FFA	40	Flower Box	6	4	2
FFA	41	Tin Picture Frame	3	2	1
FFA	42	Wishing Well.....	9	6	3
FFA	43	Wood Bench	6	4	2
FFA	44	Wood Shelf.....	6	4	2

Open Pee Wee Show

Age group 7 and under can show in the Pee Wee Show.

Will be held before the regular show for each of the following species:

Cattle, Bucket Calf, Swine, Sheep, Goats, Rabbits and Poultry.

No premiums paid.

This is not a part of the MO. 4-H program.

Open to any youth

Animal Health Requirements For Exhibition

The following is a SUMMARY, and not a reprint of 2 CSR 20-2.040 Animal Health Requirements for exhibition regulations. Rules subject to revision by the Missouri State Veterinarian at any time. Contact the Missouri State Veterinarian's office at (573) 751-4359 for clarification on the following:

1. Certificate of Veterinary Inspection/General Requirements.

- A. All animals must have a Certificate of Veterinary Inspection or a paper copy of an electronic Certificate of Veterinary Inspection unless specifically exempted. The Certificate of Veterinary Inspection must show the number of animals(s) covered by the document, listing individual identification, the purpose for which the animals are to be moved, the points of origin and destination, the consignor and the consignee.
- B. The Certificate of Veterinary Inspection is valid for thirty (30) days.
- C. Animals with active lesions of ringworm or warts will not be permitted to exhibit and shall be subject to isolation and expulsion
- D. Sales scheduled in association with exhibitions must employ a veterinarian to examine animals and process Certificate of Veterinary Inspection for change of ownership. The following are requirements for animals EXHIBITED in Missouri. Animal sold in addition to being exhibited must meet entry requirements of Missouri.

2. Exhibition requirements for Cattle in Missouri.

- A. Intrastate (cattle in Missouri moving for exhibition only).
 - 1. No Certificate of Veterinary Inspection required.
 - 2. Brucellosis – no test or vaccination is required.
 - 3. Tuberculosis – no test is required.
- B. Interstate (cattle from another state entering Missouri for exhibition only)
 - 1. Brucellosis -
 - A. Cattle from Brucellosis- Free States
 - 1. Certificate of Veterinary Inspection required with official individual identification for each animal listed.
 - 2. Brucellosis
 - A. Cattle from Brucellosis-free states.
 - 1. All cattle may enter without a brucellosis test.
 - 2. Steers. No test required but the steer(s) must be listed and identified on a Certificate of Veterinary Inspection.
 - B. Sexually intact cattle from Brucellosis Class A states. All test-eligible animals must be tested and negative within thirty (30) days prior to entry except –
 - 1. Cattle from a certified brucellosis-free herd. The certified herd number and date of the last herd test date must be listed on the Certificate of Veterinary Inspection; and
 - 2. Rodeo bulls from a Class A state must have a negative brucellosis test within twelve (12) months.
 - 3. Tuberculosis.
 - A. Beef – all beef breeding cattle six (6) months of age or over entering Missouri for exhibition only must meet one of the following requirements:
 - 1. Originate from a tuberculosis-free state.
 - 2. Originate from a tuberculosis-accredited free herd. The herd number and current herd date must be listed on the Certificate of Veterinary Inspection
 - 3. Test negative within sixty (60) days of exhibition.
 - B. Dairy – all sexually intact dairy cattle six (6) months

of age and older entering Missouri for exhibition only must meet one of the following requirements:

- 1. Negative to an official tuberculosis test within sixty (60) days prior to exhibition
- 2. Originate from an accredited tuberculosis-free herd. The herd number and current herd test date must be listed on the Certificate of Veterinary Inspection.

3. Exhibition requirements for Swine.

- A. Intrastate (swine in Missouri moving for exhibition only)
 - 1. No Certificate of Veterinary Inspection is required
 - 2. Brucellosis – no test required
 - 3. Pseudorabies – no test required
- B. Interstate (swine from another state entering Missouri for exhibition only.)
 - 1. A Certificate of Veterinary Inspection is required. All swine must be identified by ear tag, ear notch, tattoo and individually listed on the Certificate of Veterinary Inspection.
 - 2. Brucellosis –
 - A. Breeding swine originating from brucellosis-free states may exhibit without a brucellosis test.
 - B. Breeding swine originating from a brucellosis stage II states must be tested negative within sixty (60) days prior to exhibition except breeding swine from a validated brucellosis-free herd. The validated herd number and the date of the last validating test must be listed on the Certificate of Veterinary Inspection.
 - 3. Pseudorabies –
 - A. Swine originating from a state classified as State VI the National Pseudorabies (PRV) Eradication Plan may exhibit without a pseudorabies test.
 - B. All other swine must be tested negative within sixty (60) days prior to exhibition except from a qualified pseudorabies-free herd. The qualified herd number and date of the last qualifying test must be listed on the Certificate of Veterinary Inspection.

4. Exhibition Requirements for Sheep.

- A. Intrastate (sheep in Missouri moving for exhibition only)
 - 1. Sheep must be free of clinical signs of an infection or contagious disease.
 - 2. All sheep, including wethers, must be accompanied by a Certificate of Veterinary Inspection or a paper copy of an electronic Certificate of Veterinary Inspection showing official identification (ear tag, electronic implant, or registration tattoo) as defined in Part 79 of the Code of Federal Regulations. If electronic implants are used for identification, owner/manager must provide electronic implant reader.
 - 3. No test required.
- B. Interstate (sheep from another state entering Missouri for exhibition only).
 - 1. Sheep must be free of clinical signs of an infectious or contagious disease.
 - 2. All sheep, including wethers, must be accompanied by a Certificate of Inspection or a paper copy of an electronic Certificate of Veterinary Inspection showing official identification (ear tag, electronic implant or registration

tattoo) as defined in Part 79 of the Code of Federal Regulation. If electronic implants are used for identification, owner/manager must provide electronic implant reader.

3. No test required.

5. Exhibition requirements for **Goats**

A. Intrastate (goats in Missouri moving for exhibition only).

1. Goats must be free of clinical signs of an infectious or contagious disease.

2. All goats, including wethers, must be accompanied by a Certificate of Veterinary Inspection or a paper copy of an electronic Certificate of Veterinary Inspection showing official identification (ear tag, electronic implant or registration tattoo) as defined in Part 79 of the Code of Federal regulations. If electronic implants are used for identification, owner/manager must provide electronic implant reader.

3. No test required.

B. Interstate (goats from another state entering Missouri for exhibition only).

1. Goats must be free of clinical signs of an infectious or contagious disease.

2. All goats, including wethers, must be accompanied by a Certificate of Veterinary Inspection or a paper copy of an electronic Certificate of Veterinary Inspection showing official identification (ear tag, electronic implant or registration tattoo) as defined in Part 79 of the Code of Federal regulations. If electronic implants are used for identification, owner/manager must provide electronic implant reader.

3. No test required.

6. Exhibition requirements for **Equine**.

A. Intrastate (equine in Missouri moving for exhibition only).

1. Equine that are to be exhibited must be free of clinical signs of an infectious or contagious disease. Any equidae showing signs of infectious or contagious disease at an exhibition may be excused by the official inspecting veterinarian. When an official inspecting veterinarian is present, all equidae will be subject to daily inspection.

2. A Certificate of Veterinary Inspection is not required.

3. All equidae (except nursing foals accompanied by their dams) must be accompanied by a current VS Form 10-11 or any officially recognized state EIA test chart showing the graphic description of all markings needed for identification, or microchip, or legible tattoo, or unique registered brand. A certified photocopy or certified facsimile of the VS Form 10-11 or any officially state EIA test chart may be accepted for the purpose of exhibition.

B. Interstate (equine from another state entering Missouri for exhibition only).

1. Equine that are to be exhibited must be free of clinical signs of an infectious or contagious disease. Any equidae showing signs of infectious or contagious diseases at an exhibition may be excused by the official inspecting veterinarian. When an official inspecting veterinarian is present; all equidae will be subject to daily inspection.

2. A Certificate of Veterinary Inspection is not required.

3. All equidae (except nursing foals accompanied by their dam) must be accompanied by a current VS Form 10-11 or any officially recognized state EIA test chart showing the graphic description of all markings needed for identification, or microchip, or legible tattoo, or unique registered brand. A certified photocopy or certified

facsimile of the VS Form 10-11 or any officially recognized state EIA test chart may be accepted for the purpose of exhibition.

4. Alteration or substitution of any information on any VS Form 10-11 including certified photocopy or certified facsimile or any official copy of a Certificate of Veterinary Inspection shall cause the document to be invalid and in violation of sections 267.010 to 267.730, RSMo, and may result in civil penalties not to exceed ten thousand dollars (\$10,000) per violation and subject to expulsion.

5. A six (6) month passport from states with which there is a reciprocal agreement will be accepted in lieu of VS Form 10-11. These passports must have proof of a negative EIA test within thirty (30) days of the date of application of the passport and permanent identification for each horse by means of registered brand, legible tattoo, or microchip to be recorded on the passport and the VS Form 10-11 or any officially recognized state EIA test chart, along with other identifying characteristics. In the event of confirmed vesicular stomatitis in any of the states with which reciprocal agreements exist, use of the six (6) month passport will be suspended by the state veterinarian of Missouri.

6. Venezuelan Equine Encephalomyelitis (VEE) vaccination and entry permit is required prior to entry on equidae originating from states in which VEE has been diagnosed within the preceding twelve (12) months.

7. Any equine originating from a premise under quarantine for Vesicular Stomatitis shall obtain an entry permit and must include the statement on the Certificate of Veterinary Inspection that "the equine listed have been exposed to Vesicular Stomatitis or located within ten (10) miles of premises quarantined for Vesicular Stomatitis within the past thirty (30) days."

C. The board, organization or manager of each assembly or event is responsible for certifying that all Equidae admitted or participating meet the regulations in this section and shall not admit or allow participation of equidae not so certified. Untested equidae shall not be allowed to congregate with other equidae. The owner of each animal shall comply with requirements 267.010 to 267.730, RSMo, and may be assessed civil penalties not to exceed ten thousand dollars (\$10,000) for each violation.

7. Exhibition requirements for **Poultry and Waterfowl**.

A. Intrastate (poultry and waterfowl in Missouri moving for exhibition only).

1. All poultry and waterfowl to be exhibited must be free of all clinical signs of any infectious and contagious disease.

2. No Certificate of Veterinary Inspection is required.

3. Pullorum-Typhoid test. All poultry (except waterfowl) exhibited shall be tested negative for pullorum- typhoid within ninety (90) days prior to exhibition or originate from a flock approved by the National Poultry Improvement Plan (NPIP) or an equivalent program which has been tested within the past twelve (12) months with no change of ownership. This information shall be documented on a VS Form 9-2 (see 2 CSR 30-8.020) or similar certificate which shall accompany the poultry to the exhibition and shall be made available on request.

B. Interstate (poultry and waterfowl entering Missouri for exhibition only).

1. All poultry and waterfowl to be exhibited must be free of clinical signs of any infectious or contagious disease.

2. A Certificate of Veterinary Inspection is required.

3. Pullorum-Typhoid test. All poultry (except waterfowl) exhibited shall be tested negative for pullorum-typhoid within ninety (90) days prior to exhibition or originate from a flock approved by the National Poultry Improvement Plan (NPIP) or an equivalent program which has been tested within the past twelve (12) months with no change of ownership. This information shall be documented on a VS Form 9-2 (see 2 CSR 30-8.020) or similar certificate which shall accompany the poultry to the exhibition and shall be made available on request.
4. An entry permit is required.
- C. Requirements for sponsoring exhibitions for Poultry and Waterfowl.
 1. An official representing the person or organization sponsoring the exhibition shall notify the state veterinarian no later than thirty (30) days prior to the exhibition giving the names, place, inclusive dates and times of the event.
 2. Record Keeping. The sponsor of the exhibition shall compile a list of all poultry and waterfowl pre-sent at the exhibition. The list shall contain the name and address of each owner, the number, species, breed, variety, type, sex and pullorum-typhoid status of all poultry present. A copy of this list shall be made available upon request to a representative of the department.
3. Inspection. All poultry and waterfowl to be exhibited must be free of clinical signs of any infectious or contagious disease. A representative of the department shall have access to the exhibits and may conduct inspections and tests as deemed necessary.
8. Exhibition requirements for **Dogs and Cats**.
 - A. Intrastate (dogs and cats in Missouri moving for exhibition only).
 1. A Certificate of Veterinary Inspection is not required.
 2. Dogs and cats four (4) months of age or older must be vaccinated for rabies by one (1) of the methods and within the time period published in the current Compendium of Animal Rabies Vaccines by the National Association of State Public Health Veterinarians, Inc.
 - B. Interstate (dogs and cats from another state entering Missouri for exhibition only).
 1. A Certificate of Veterinary Inspection is not required.
 2. Dogs and cats four (4) months of age or older must be vaccinated for rabies by one (1) of the methods and within the time period published in the current Compendium of Animal Rabies Vaccines by the National Association of State Public Health Veterinarians, Inc.
 3. No entry permit is required.

Ownership of Animals

Exhibitors must have had proper ownership of the following species with an ear notch (required for swine) or ear tag to be turned ownership papers turned in to the Extension Office for identification purposes, by the following dates:

- Swine by April 22, 2019
- Steers/Market Heifer by Feb. 25, 2019
- Market Lambs by May 13, 2019
- Bucket Calf by June 1, 2019
- Horse by May 1, 2019
- Dogs by April 1, 2019
- Market Goats by May 13, 2019
- Other breeding livestock by July 1, 2019
- Cats by May 15, 2019
- Rabbits & Poultry by June 1, 2019.

There should be no co-owned livestock, except with immediate family members.

All livestock exhibits will be limited to two-market animals per species.

Rate of Gain Awards will follow these guidelines

Daily Gain Per Day

- Steers – Blue – 3lbs. & above
Red – 2.25 – 2.99
White – below 2.25
- Swine – Blue - 1.75 & above
Red - 1.5 – 1.74
White – below 1.5
- Goat – Blue - .50
Red - .25-.49
White - .24
- Sheep – Blue .75 & above
Red - .5 - .74
White – below .5

Livestock Sale Rules

1. An exhibitor must be present to show and sell.
2. An exhibitor must be a Shelby County 4-H or FFA member, in good standing to show and sale.
3. No cryptorchid will be allowed to show or sell for market lambs, goats, steers, or market hogs.
4. White ribbon hams will not be sold.
5. Each 4-H/FFA exhibitor is allowed to sell only one specie or ham at the 4-H/FFA sale.
6. Steers, goats and sheep will sell in the sale by order of Grand Champion, Reserve Champion, and then placing in the class. Swine will sell in the sale by Grand Champion, Reserve Champion and then by draw of order.
7. Sell all animal species and hams per item, Premium Only.
8. Hams will be sold in placing order. In case of a tie, the names will be randomly drawn.
9. All meat animals are allowed to sell in the Livestock sale.
10. All livestock sellers will have \$2.00 taken off their livestock check to cover the thank you ad for the local newspapers.

SALE ORDER:

HOGS, RABBITS, POULTRY, SHEEP, GOAT, CATTLE, & HAMS

**** Selling all Grand & Reserve Champion of each species first. After all Champions are sold the sale will proceed with the rest of each species.**

We would like to thank the following People & Businesses who purchased Livestock or Hams at the 2018 Shelby County Youth Fair

12-D Construction	Exchange Bank of NE Missouri	Passion for Pigs Vet Service
ADM	Farmers Elevator & Exchange	Peoples Land Co
Barry's Elevator	FCS	Perry Cattle
Beckley Farms	Fohey Farms	POET - Macon
Beldon Family	Gale & Pat Buckman	POET-Biorefining - Laddonia
Belt Seed Co	Glen Eagan	Ralph Eagan
Boarmax	Greening-Eagan-Hayes	Red Barn Vet
Broughton Farms, LLC	Heartland Community Church	Red Barn Vet
Burriss Seed - Jordan Watson	Larry & Donna Mitchell	Ricketts Farm Service
C&M Service - Charlie Gaines	Laura & Kenton Parsons Farm	Ronnie Neil
C&R Markets	Leslie & Connie Thrasher	Rutter Farms
C-Com Inc	Macon-Atlanta State Bank	Sharpe Holdings
Community State Bank	Mesmer Fertilizer	Simpson Building Supply
Curtis & Melissa Smith	MFA	Sydenstricker
Dan Rubison	Midwest Tire	Tim Maddex
Danny Collins Pumping	Mike Buckman	Tim's Home Center
Debra Mayes, DVM	Mike Fohey State Farm Ins	Tom & Rose Shively
Dennis Perrigo	Mike Greenwell	TPNB Bank
Dodd Welding	NE Diesel	United State Bank
Donnie Parsons	Northeast Veterinary Service	URSA
Double A Angus	O'Laughlins	Wilt Angus
Ensor Farms	Otto Farms	

Shelby County 4-H and FFA Members

A Special Thank You Goes To:

*** Thanks to Ricketts Farm Service for the use of their scales.**

***MFA of LaBelle, Northeast Mo. Coop Service, Shelby County Implement, DCF Electric and Midwest Tire for donating extra money for the Shelby County Youth Fair Exhibitors above the regular premium.**

***Thank you to Joyce's Embroidery & her sponsors, for the T-shirts for the 4-H & FFA Fair Exhibitors.**

***Thank you to Crop Production Service for sponsoring the Buyer's Appreciation Dinner.**

Country Cured Hams

Monday, July 8, 2019

Ham check in 6:00 – 8:00 p.m.

Superintendent – Pat Greenwell

1. Exhibitor may sell one (1) Ham at the sale, (providing they are not selling any livestock).
2. Sale order: Grand Champion, Reserve Champion.
3. White ribbon hams will not be sold in the sale.
4. Exhibitors in the Country Cured Ham project **MUST BE PRESENT** to Check in and weigh their hams.
5. **MUST BE PRESENT AT THE SALE TO SELL.**
6. Only first time Ham members must have attended one of the two Ham Workshop to be able to sell in the Livestock sale.
7. Sell all hams per item, Premium Only.
8. Hams will be sold in placing order. In case of a tie, the names will be randomly drawn.
9. Hams will be divided into 3 weight classes.
10. No Borax or other non-FDA approved substances may be used on the hams.

TROPHY

Grand Champion Country Cured Ham
Times Remember

Reserve Champion Country Cured Ham
South Shelby Blue and Gold Club



Hams will be judged in three classes

Class breaks to be determined on the day of the show

- Light
- Medium
- Heavy

SHEEP SHOW

Wednesday, July 10, 2019

Sheep in place by: 9:00 a.m. Sheep Show 10:00a.m.

Superintendent: Gina Pollard

1. Required date of ownership for Breeding Stock is July 1; for Market Lamb it is May 13.
2. Each exhibitor will be responsible for his own feed, bedding, equipment, and cleaning of his pen before leaving the fairgrounds. No straw in the Livestock Barn.
3. An animal must be shown in at least one class to be eligible to participate in the Rate-of-Gain classes.
4. All rams must be purebred. The market classes may be purebred or crossbred.
5. Breeding sheep will show as yearlings or lambs. Base date for breaking classes will be September 1, 2018.
6. There will be a class provided for any breed present.
7. Point Value: Blue - 30, Red - 20, White - 10
8. Breeding Stock to be shown in Breeding Classes should be eligible for registration in their respective breed association.
9. They must be certified weights by project leader and be recorded on identification sheets. Others must have project leader, FFA Advisor or Veterinary signature on the Sheep I.D. Form and be turned in by May 13.
10. Sheep must have Scrapie Tags
11. All livestock exhibitors must observe the health regulations as stated for each livestock division.
12. Market Lambs weigh-in is optional on May 4, 2019, must have ear tag or tattoo.

SHEEP CLASSES

	Dorset	Hampshire	Montadale	Suffolk	Southdown	Tunis	Shropshire	Other Purebred	Crossbred
Yearling Ram (between 1&2 years)	40	46	52	58	64	70	76	82	
Fall Ram Lamb (born between Sept.1 –Dec. 31, 2018)	41	47	53	59	65	71	77	83	
Ram Lamb (born after Jan. 1, 2019)	42	48	54	60	66	72	78	84	
Yearling Ewe (between 1&2 years)	43	49	55	61	67	73	79	85	91
Fall Ewe Lamb (born between Sept. 1– Dec. 31, 2018)	44	50	56	62	68	74	80	86	92
Ewe Lamb (born after Jan. 1, 2019)	45	51	57	63	69	75	81	87	93

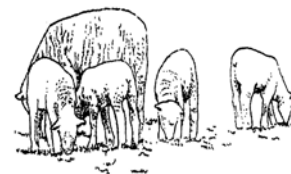
MARKET LAMB CLASSES

Market Lambs (ewes or wethers born after Jan. 1, 2019). An animal **cannot** show in both Market & Breeding classes.

Market Lambs - All Breeds - 94

Shelby Co. exhibitors only. One entry per exhibitor, and the placing will determine order of sale.

A Champion and Reserve Champion will be awarded trophies.



PERFORMANCE CLASS (Rate of gain figured from weigh-in date to fair date)

Performance Market Lambs - All Breeds - 95

Home Raised Class

Any animal whose dam is owned by the exhibitor or a member of the immediate family (father, mother, brother, sister, or legal guardian or grandparents only), at the time of birth, and is born on the local property that is owned or managed by the immediate family of the exhibitor is eligible. The animal must be cared for from birth to exhibition by the exhibitor on the local property. The dam does not have to be owned by the exhibitor/family at the time of breeding.

- Open to Shelby Co. 4-H or FFA member only Animal must have been shown in a 4H & FFA class to be eligible for the home-raised class.

SHEEP SHOW

GRAND CHAMPION MARKET LAMB (OVERALL)

United Country Farm & Home Real Estate-Justin Pollard

RESERVE GRAND CHAMPION MARKET LAMB (OVERALL)

North Shelby FFA Chapter

CHAMPION HOME RAISED LAMB

Exchange Bank, Shelbyville, MO (Shelby Co. Only)

RESERVE CHAMPION HOME RAISED LAMB

Red Barn Veterinary Clinic, Shelbina, MO. (Shelby Co. Only)

CHAMPION HOME RAISED BREEDING SHEEP

Parson/Snow Farms (Shelby Co. Only)

SHEEP SHOWMANSHIP AWARD (8-10)

Parson/Snow Farms

SHEEP SHOWMANSHIP AWARD (11-13)

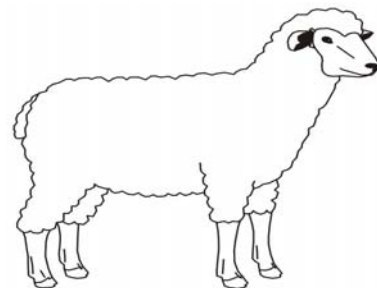
Northeast Glass Co.

SHEEP SHOWMANSHIP AWARD (14 & OVER)

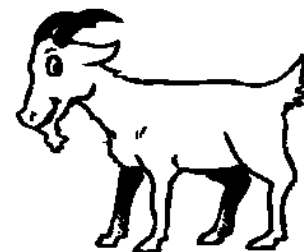
Eckler Acres

MARKET LAMB RATE-OF-GAIN

Brush Creek Farms – Scott Long



GOAT SHOW



Thursday, July 11, 2019

Goats in place by: 8:30 a.m. Show – 9:30 a.m.

“See Health Regulations”

Superintendent – Katheryn Coon

1. All goat must be owned and cared for by the exhibitor prior to May 13, 2019
2. All goats with exceptions of wethers, must have been born prior to January 1, 2019.
3. Market Goats weigh- in is optional on May 4, 2019, must have an ear tag or tattoo.
4. They must be certified weights by project leader, and be recorded on identification sheets. Others must have project leader, FFA Advisor or Veterinary signature on the Goat I.D. Form and be turned in by May 13.
5. Exhibitors are limited to two entries per class.
6. All exhibitors are responsible for having appropriate health papers for all animals.
(See the Health Regulation in this fair book.)
7. Each exhibitor will be responsible for his own feed, bedding, equipment, and cleaning of his pen before leaving the fairgrounds. No Straw in the Barn.
8. Each animal may enter in 1 class only.
9. Goats must have Scrapie tags.
10. Does can show in the market goat show or breeding Class

Class	DAIRY BREEDS	Points
10	Jr. Doe-age 12 mos. & under	30-20-10
20	Jr. Doe-age 13-24 mos.	30-20-10
30	Sr. Doe-age 2 yrs & older	30-20-10
35	Billy Goat 2 yrs & under	30-20-10

Class	MEAT BREEDS	Points
40	Jr. Doe-age 6-12 mos.	30-20-10
50	Jr. Doe-age 13-24 mos.	30-20-10
60	Sr. Doe-age 2 yrs & older	30-20-10
65	Buck Goat 2 yrs & under	30-20-10

Class	OTHER BREEDS	Points
70	Jr. Doe-age 6-12 mos.	30-20-10
75	Jr. Doe-age 13-24 mos.	30-20-10
80	Sr. Doe-age 2 yrs & older	30-20-10
85	Buck Goat 2 yrs & under	30-20-10

Class	MARKET GOAT-WETHERS ONLY	Points
90	Age 4-12 mos. Champion Reserve Champion	30-20-10

Class	RATE OF GAIN	Points
95		30-20-10

Showmanship Class 13 & Under, and 14 & Over

Home Raised Class

Any animal whose dam is owned by the exhibitor or a member of the immediate family (father, mother, brother, sister, or legal guardian or grandparents only), at the time of birth, and is born on the local property that is owned or managed by the immediate family of the exhibitor is eligible. The animal must be cared for from birth to exhibition by the exhibitor on the local property. The dam does not have to be owned by the exhibitor/family at the time of breeding.

- Open to Shelby Co. 4-H or FFA member only. Animal must have been shown in a 4H or FFA class to be eligible for the home-raised class.

GOAT SHOW AWARDS

GRAND CHAMPION DAIRY DOE

La Belle MFA

RESERVE CHAMPION DAIRY DOE

LaBelle, MFA

GRAND CHAMPION MEAT DOE

Community Trash Service

RESERVE CHAMPION MEAT DOE

Shelbyville Elevator

CHAMPION MARKET GOAT

South Shelby FFA

RESERVE CHAMPION MARKET GOAT

TBA

CHAMPION DAIRY BILLY GOAT

Ricketts Farm Service

CHAMPION MEAT BILLY GOAT

Ricketts Farm Service

GOAT SHOWMANSHIP 13 and UNDER

Elsen Enterprise LLC/ Tom & Carrie Elsen

GOAT SHOWMANSHIP 13 & UNDER RUNNER- UP

Brian Douglass, Seed Sales LLC

GOAT SHOWMANSHIP 14 and OVER

Shelby County Health Department

GOAT SHOWMANSHIP 14 & OVER RUNNER -UP

Brian Douglass, Seed Sales LLC

CHAMPION HOME RAISED MARKET GOAT

Keosauqua Sales Co. (Shelby Co. Only)

RESERVE CHAMPION HOME RAISED MARKET GOAT

Nutrien Ag Solutions (Shelby Co. Only)

CHAMPION HOME RAISED BREEDING GOAT

Prairie 4-H (Shelby Co. Only)

MARKET GOAT RATE-OF-GAIN

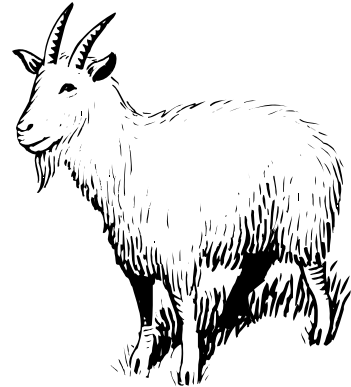
Orschelns of Shelbina

GRAND CHAMPION OTHER BREEDS DOE

Wilt Trucking and Welding

RESERVE GRAND CHAMPION OTHER BREEDS

GVC Consultants LLC/Dr. Jack Coleman



BUCKET CALF SHOW

Tuesday, July 9, 2019
Calf in place 3:00 p.m.
Show starts at 5:00 p.m.

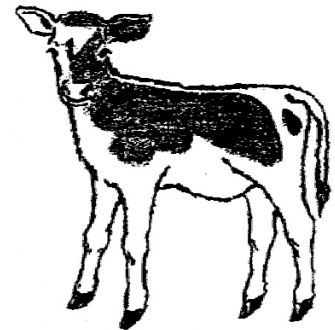
Superintendent: Kyle Harvey

1. Exhibitor must be enrolled in project #133. Age 8-12 as of January 1, 2019.
2. Calf must be born March 1, 2019 to June 1, 2019.
3. Calf must be owned and hand fed by project member since it was two weeks old.
4. Calf may be any breed or sex (heifer, steer or bull).
5. Calf is not eligible to be shown in other classes (beef or dairy).
6. Calf should be broke to lead and be shown by proper method according to breed (beef or dairy).
7. Classes will be broken by exhibitor's age if necessary.
8. Criteria for judging:
 - 25% Showmanship
 - 25% Condition, health and grooming of calf
 - 20% Quality of calf (structural, soundness, etc.)
 - 30% Knowledge gained (judge will talk with exhibitor)
 - a. Breed
 - b. Age
 - c. Feeding practices
 - d. Growth changes (measurements of height and chest circumferences and/or weight)
 - e. Medicines (vaccinations, worming, etc)
10. Each member is limited to no more than 1 calf.
11. Bucket Calves are to remain in place in the barn till conclusion of Beef Show.
12. Point value: Blue - 12, Red - 8, White - 4

Class - 332

Champion Bucket Calf
Reserve Champion Bucket Calf

Trophy & Ribbon
Ribbon



BEEF SHOW

Tuesday, July 9, 2019

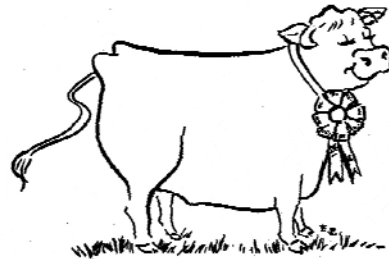
Cattle Show Starts at 5:00 p.m. Cattle in Place- 3:00

Superintendent: Kyle Harvey

1. Steers and Market Heifer will show by weight instead of breed.
2. Steers Weigh-in is optional - must have ear tags or tattoos on February 18.
3. Each exhibitor is limited to two entries per class.
4. Any questions as to age of breeding animals will be settled by registration papers.
5. Crossbred or commercial beef heifer classes are for non-pedigreed animals.
6. Each exhibitor will be responsible for his own feed, bedding, equipment, and cleaning of his pen before leaving the fairgrounds.
7. Cow & Calf class winners are not eligible to show for Champion Heifer in each breed.
8. Point value: Blue - 40, Red - 30, White - 20.
9. Breeding stock to be shown in Breeding Classes should be eligible for registration in their respective breed associations.
10. Steers and Market Heifer must be shown in at least one class to be eligible to participate in the Rate-of-Gain classes.
11. All livestock exhibitors must observe the health regulations as stated for each livestock division.
12. Same tag # and tag color must be maintained in the steer's ear through the Livestock Sale date.

BEEF CLASSES

Junior Bull Calf (calved Jan. 1 - May 1, 2019)	200
Senior Bull Calf (calved Sept. 1 -Dec. 31, 2018)	201
Summer Yearling Bull (calved May. 1 - Aug. 31, 2018)	202
Junior Yearling Bull (calved Jan 1 -April 30, 2018)	203
Junior Heifer Calf (calved Jan. 1 - May 1, 2019)	204
Winter Heifer Calf (calved Nov. 1 - Dec. 31, 2018)	205
Senior Heifer Calf (calved Sept. 1 - Oct. 31, 2018)	206
Late Summer Yearling Heifer (calved July 1 - August 31, 2018)	207
Early Summer Yearling Heifer (calved May 1 - June 30, 2018)	208
Spring Junior Yearling Heifer (calved Mar. 1 - Apr. 30, 2018)	209
Junior Yearling Heifer (calved Jan. 1 - Feb. 28, 2018)	210
Early Senior Yearling Heifer (calved Sept. 1 - Dec. 31, 2017)	211
Cow & Calf (calf born after Jan. 1, 2019- cow in pasture condition)	212



MARKET STEER and HEIFER CLASS 278

STEER RATE-OF-GAIN

279

Home Raised Market and Breeding Classes

Any animal whose dam is owned by the exhibitor or a member of the immediate family (father, mother, brother, sister, or legal guardian or grandparents only), at the time of birth, and is born on the local property that is owned or managed by the immediate family of the exhibitor is eligible. The animal must be cared for from birth to exhibition by the exhibitor on the local property. The dam does not have to be owned by the exhibitor/family at the time of breeding.

- Open to Shelby Co. 4-H or FFA member only
- Animal must have been shown in a 4H or FFA class to be eligible for the home-raised class.

BEEF SHOW AWARDS

CHAMPION BUCKET CALF

Russell's Cattle Solutions, LLC

CHAMPION ANGUS HEIFER

Double Dye Farms, Shelbina, MO.

SUPREME HEIFER

Archer Daniels Midland, Company

SUPREME BULL

Richard & Tammy Ratliff

GRAND CHAMPION STEER (OVERALL)

In memory of Wayne Wilt

RESERVE GRAND CHAMPION STEER (OVERALL)

C & R Super Market, Shelbina, MO.

CHAMPION HOME RAISED STEER

Larrick Farms (Shelby Co. Only)

RESERVE CHAMPION HOME RAISED STEER

Carroll Family Farms (Shelby Co. Only)

CHAMPION HOME RAISED BREEDING CATTLE

Mayes Farms (Shelby Co. Only)

BEEF SHOWMANSHIP (13 & UNDER)

Farm Bureau Insurance, Clint Chandler

BEEF SHOWMANSHIP (14 & OVER)

Shelby Co. Farm Bureau, In Memory of Paul Wilson

CHAMPION RATE-OF-GAIN STEER

TBA

SWINE SHOW

Swine show start at 3:00 p.m. Thursday, July 11, 2019
Hogs in place 1:00-2:00 p.m.

“See Health Regulations”

Superintendent: Matt Beach

Assistant Superintendent: Scott Shively

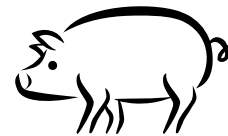
1. Entries should be in place one hour prior to the start of the show.
2. All market hogs must be farrowed after December 1, 2018.
3. Exhibitors will be limited to two-market animals per species.
4. Hogs will be broken into classes according to weight after they arrive on the grounds.
5. All swine members must be MSMQA Certified to show.
6. Point Value: Blue - 30, Red - 20, White - 10.
7. No off hogs such as backscars, belly ruptures, etc.
8. They must be certified weights by the project leader, and be recorded on identification sheets. Others must have project leader, FFA Advisor or Veterinary signature on the Hog I.D. Form and be turned in by April 22.
9. All Market hogs must be ear notched to be eligible to show, ear tags are not acceptable.
10. No cryptorchid will be allowed to show or sell.
11. Only water can be sprayed on the hogs.
12. Hogs must be shown in at least one class to be eligible to participate in the Rate-Of-Gain class
13. Each exhibitor will be responsible for his own feed, bedding, equipment, & cleaning of his pen before leaving the fairgrounds. **No straw in the livestock barn!!**
14. Exhibitors must observe the health regulations as stated for each division.
15. **All Market Hogs shown at the fair must be taken home by the exhibitors after the sale.**

Questions call Matt Beach: 573-881-0484

MARKET CLASS

Hogs should **not** be brought in until 1:00 p.m. Ear notching of hogs to show and sell is **required**. Need to be ear notched by litter and individual number. No Health papers are required, but only healthy hog will be allowed to show!

	Class
Market Hog	180
Rate-of-gain	181



ORDER OF SALE:

- A) Grand Champion
- B) Reserve Grand Champion
- C) Random Drawn for order

****If a member exhibits two hogs, the Committee MUST know which hog you plan to sell by check in. Otherwise, the committee will make the decision.**

Animal **must** have been shown in market hog class 180 to be eligible for the home-raised class.

Home Raised Class

Any animal whose dam is owned by the exhibitor & grandparents or a member of the immediate family (father, mother, brother, sister, or legal guardian only), at the time of birth, and is born on the local property that is owned or managed by the immediate family of the exhibitor is eligible. The animal must be cared for from birth to exhibition by the exhibitor on the local property. The dam does not have to be owned by the exhibitor/family at the time of breeding.

- Open to Shelby Co. 4-H or FFA member only.

SWINE SHOW AWARDS

CHAMPION LIGHT WEIGHT MARKET HOG

Prairie 4-H

CHAMPION MEDIUM WEIGHT MARKET HOG

Prairie 4-H

CHAMPION HEAVY WEIGHT MARKET HOG

Rob Christine Family

GRAND CHAMPION MARKET HOG

Mrs. R.N. Perry in Memory of R.N. Perry

RESERVE GRAND CHAMPION MARKET HOG

FCS Financial

SWINE NOVICE SHOWMANSHIP (8-10)

Harold Beach Family

SWINE NOVICE SHOWMANSHIP RUNNER-UP (8-10)

Rutter Farms

SWINE SHOWMANSHIP (11-13)

In Memory of Carol Sue Copenhaver

SWINE SHOWMANSHIP RUNNER-UP (11-13)

Chinn Hog Farms

SWINE SHOWMANSHIP (14 & OVER):

Passion For Pig - Veterinary Services, LLC

SWINE SHOWMANSHIP RUNNER-UP (14 & OVER)

Darrell Vanskike Family

CHAMPION HOME RAISED MARKET HOG

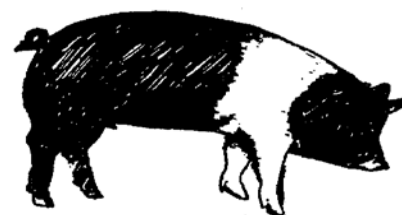
Rutters Farms (Shelby Co. Only)

RESERVE CHAMPION HOME RAISED MARKET HOG

Matt Beach (Shelby Co. Only)

SWINE RATE OF GAIN

Blaise Hog Farm



RABBIT SHOW

Tuesday, July 9, 2019

Rabbits in place by 9:00 a.m.

Rabbit show immediately following Poultry show
In the Livestock Barn

“See Health Regulations”

Superintendent: Andrea Carpenter

1. Each exhibitor is limited to two entries per class.
2. Entries in place ½ hour before judging time.
3. Exhibitors needs to have ownership of animal by June 1, 2019
4. Rabbits must not have any ear mites, mange, and no crusty eyes.



POINT VALUE: Blue - 6, Red - 4, White 2.

Rabbit Classes:

	Purebred Commercial Class	Purebred Fancy Class	Crossbred/Misc
Senior Buck	156	162	168
Senior Doe	157	163	169
Intermediate Buck (6-8 month old)	158	NA	170
Intermediate Doe (6-8 months old)	159	NA	171
Junior Buck (animals under 6 months of age)	160	166	172
Junior Doe (animals under 6 months of age)	161	167	173

#186 Meat Pen of 3 Fryers (Pen of 3-69 days and under should not weigh over 5 pounds each)

*Grand Champion – Meat Pen - Red Barn Veterinary

*Reserve Champion – Meat Pen – Red Barn Veterinary

Only entries in class # 186 are eligible to sell in Thursdays Market Livestock Sale.

Jr. Showmanship Class - 8-12 yr

* Champion (includes interview with judge)

Sr. Showmanship Class – 13 & over

* Champion (includes interview judge)

* Grand Champion Rabbit

* Reserve Champion Rabbit

Commercial Class consists of meat animals, examples are: New Zealand, Californian Flemish Giants and American Chinchilla.
Fancy Class includes breeds such as: Mini Lops, Dutch Dwarfs and Florida Whites

POULTRY SHOW

Tuesday, July 9, 2019

Poultry in place at 8:00 a.m. Poultry Show – 8:30 a.m.

Show in is the Livestock Barn

“See Health Regulations”

Superintendent: Jami Snow

1. Each exhibitor is limited to two entries per class.
2. Entries in place ½ hour before judging time.
3. Exhibitor needs to have ownership of animal by June 1, 2019. This pertains to Breeding Classes also.

POINT VALUE: Blue - 6, Red - 4, White - 2

Poultry Classes:

Large Fowl:

- 140 Old Pen (1 cock and 2 hens)
- 141 Young Pen (1 cockerel and 2 pullets)
- 142 Cock (male bird more than 1 year old)
- 143 Cockerel (male bird less than 1 year old)
- 144 Hen (female more than 1 year old)
- 145 Pullet (female less than 1 year old)

Bantams:

- 240 Old Pen (1 cock and 2 hens)
- 241 Young Pen (1 cockerel and 2 pullets)
- 242 Cock (male bird more than 1 year old)
- 243 Cockerel (male bird less than 1 year old)
- 244 Hen (Female more than 1 year old)
- 245 Pullet (Female less than 1 year old)

Turkeys:

- 440 Pen (1 male & 2 Females)
- 442 Tom
- 444 Hen

Ducks and/or Geese:

- 342 One male
- 344 One female
- 340 One male and two females (Pen)

456 Pen of 3 Fryers (Meat type Poultry Only) under 49 days old & minimum of 3 lbs.

Only entries in class #456 are eligible to sell in Thursdays Market Livestock Sale.

Grand Champion Meat Pen of 3
Reserve Champion Meat Pen of 3

Grand Champion Bird
Reserve Champion Bird

Jr. Showmanship Class - 8-13 yr.
* Champion (includes interview with judge)

Sr. Showmanship Class – 14 & over
* Champion (includes interview judge)



CAT SHOW

Monday, July 8, 2019 -10:30 p.m.

Show is in the Livestock Barn

"See Health Regulations"

Superintendent: TBA

POINT VALUE: Blue - 6, Red - 4, White – 2

1. Entries are limited to Shelby County Cat Care Project members only.
2. Project members must care for the cat, which is owned by the member or family.
3. All members must be in good standing with their club and project leader to show.
4. Cats in place, half an hour before the show.
5. It is recommended that all cats be vaccinated for distemper, feline Leukemia and be wormed.
6. All entries will be restrained in a pet carrier of some type and remain confined unless being groomed or judged. Leashes or harnesses are highly recommended.
7. No entry shall be left unattended and will be released immediately after the show.
8. All judges' decisions are final!
9. Each exhibitor is limited to two entries per class.
10. Cats must have no ring worms, no respiratory diseases, no matted eyes and free of parasites.
11. Cats must have Health papers.

CLASSES:

79 - ADULT

1. 10 months or older.
2. Have knowledge of cat care.
3. Grooming.
4. Overall health.

80 - KITTEN

1. 2 months through 9 months.
2. Have knowledge of cat care.
3. Grooming.
4. Overall health.

81 - COSTUME

1. Either Adult or Kitten.
2. Originality
3. Theme
4. Creativity



***OVERALL SHOWMANSHIP AWARD** (Champion)

***TOP CAT OVER ALL** (Grand Champion & Reserve Grand Champion)



CLOVER KID SMALL ANIMAL SHOW



Monday, July 8, 2019

11:00 a.m.

Show is in the Livestock barn

Clover Kids are encouraged to experience a wide range of activities. Learning about and enjoying small animals is one of the many opportunities children can have in our Shelby County Clover Kids project. We will be having a small animal show especially designed with Clover Kids ages 5-7 in mind. Below is a list of approved small animals and policies to help ensure that children and volunteers have safe and meaningful experiences with these animals.

Amphibians: Frogs, toads

Birds

Cavies: Guinea pigs, gerbils, hamsters

Cats

Chinchillas

Dogs

Fish

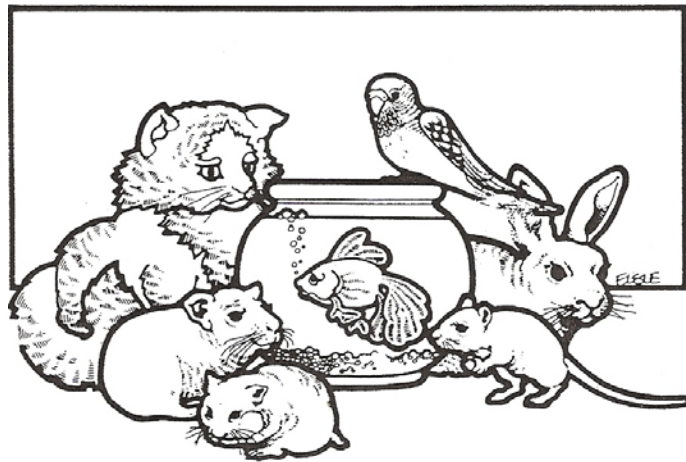
Hedgehogs

Lizards

Rabbits

Mice

Snakes



Small animal safety policies:

- ♣ **No wildlife allowed—follows Department of Conservation rules as specified in the Wildlife Code of Missouri.**
- ♣ **All animals must be caged, leashed, and/or contained as appropriate and manageable by the child during Clover Kids meetings and events.**
- ♣ **Parent or guardian must be present with his or her child(ren) when animals are involved.**

Shelby County 4-H & FFA Horse Show

Saturday, July 13, 2019

Register at 9:00 AM Show Starts at 9:30 AM

Shelby County Fairground

Samuel Hawkins Memorial Arena, Shelbina, MO

For Information call: Kenny Wilson: 573-406-7990

- Show will be conducted to Missouri 4-H/FFA Horse Show Guidelines. Open to all 4-H & FFA members belonging in counties with a reciprocating 4-H/FFA Horse Show—reciprocating rules to apply.
- Danish system of placing used for Showmanship and Horsemanship classes only.
- Points paid only to all qualifying participants.
- Negative Coggins papers and proof of good standing, ownership/lease papers filed in membership county (4-H or FFA) by May 1 will be checked. **Make sure you bring 4-H papers and/or FFA papers signed by leaders/advisors the day of show.**
- You must show in either Showmanship or Horsemanship to participate in games.
- You may exhibit in only one Showmanship or Horsemanship class and you must qualify to participate in Championship classes. Walk-Trot riders are not eligible for Western Pleasure classes.
- Entry fee \$10 per animal. Payable day of the show. Enter any number of classes.
 1. Showmanship, 14 & over
 2. Showmanship, 13 & under
 3. 1st & 2nd Year Showmanship (you may show in classes 1 or 2 if you prefer, but not both. This class is not eligible for Championship award and only for 1st & 2nd year members.)
 4. Welch Greenwell Memorial Champion Showmanship (1st, 2nd & 3rd places from Classes 1 & 2)
 5. Hunt Seat Pleasure, 14 & over
 6. Hunt Seat Pleasure, 13 & under
 7. Hunt Seat Equitation, 14 & over
 8. Hunt Seat Equitation, 13 & under
 9. Horsemanship, 14 & over
 10. Horsemanship, 13 & under
 11. 1st & 2nd Year Walk-Trot Horsemanship (you may show in classes 5 or 6 if you prefer, but not both. This class is not eligible for Championship award and only for 1st & 2nd year members. Not eligible for Western Pleasure)
 12. Samuel Hawkins Memorial Champion Horsemanship (1st, 2nd & 3rd places from Classes 9 & 10)
 13. Western Pleasure, 14 & over
 14. Western Pleasure, 13 & under
 15. Reining, 14 & over
 16. Reining, 13 & under
 17. Egg & Spoon, 14 & over
 18. Egg & Spoon, 13 & under
 19. Barrels, 14 & over
 20. Barrels, 13 & under
 21. Flags, 14 & over
 22. Flags, 13 & under
 23. Poles, 14 & over
 24. Poles, 13 & under

Thanks to our many sponsors for making this show possible!

OBEDIENCE 4-H & FFA DOG SHOW

Saturday, July 13, 2019 -- 9:00 a.m.

Superintendent: Jessie DeVore and Elaine Allred

1. Entries are limited to Shelby and Macon County Dog Project members.
2. Project members must have met as a county unit and with the approval of the appointed county instructor.
3. All dogs must be trained by exhibitor and have possession by April 1.
4. All dogs must have proof of good health, immunizations and worming.
5. Female dogs in season must be shown at the end of the obedience classes and kept away from the show ring and other dog and must be properly bathed and deodorized with an anti-mating spray.
6. Proper equipment consists of obedience six-foot lead, approved choke collar, and showmanship lead.
7. Dogs with AKC titles must compete in advanced classes.
8. One obedience class per dog. One showmanship class per person.
9. Exhibitor will show and advance in show order.
10. POINT VALUE: Blue - 24, Red - 16, White - 8

OBEDIENCE CLASSES

340 **Beginner-Novice: (First-Year Dog) May compete 1 year only:**

Heel on leash, 40 points; Figure "8", 40 points; Sit for examination, 40 points; Sit Stay, 40 points; Recall, 40 points. Maximum total score: 200 points.



341 **Novice: (Second-Year Dog) May compete 2 years max:**

Heel on leash and figure "8", 40 points; Standing for examination, 30 points; Heel free, 40 points; Recall, 30 points; Sit stay - get your leash, 30 points; Group Exercise - Sit & Down Stay, 30 points. Maximum total score: 200 points.

342 **Graduate Novice - May compete 3 years max:**

Heel free and figure "8", 40 points; Drop on recall, 40 points; Dumbbell recall, 30 points; Dumbbell Recall over high jump, 30 points; Recall over broad jump, 30 points; Stay - Get your leash (sit, down), 30 points; Maximum total score, 200 points.

343 **Open - May compete unlimited years:**

Heel free and figure "8", 40 points; Command Discrimination (stand, down, sit) 30 points; Drop on recall, 30 points; Retrieve on flat, 20 points; Retrieve over high jump, 30 points; Broad jump, 20 points; Stay - Get Your Leash (sit, down), 30 points. Maximum total score: 200 points.

SHOWMANSHIP CLASSES

345 **Novice-(1st Year Showmanship)**-Those exhibitors who have not exhibited in Showmanship Classes previously.

346 **Novice- (2nd Year Showmanship)**-Those exhibitors who are in their 2nd year of exhibiting in Showmanship Classes.

347 **Open Showmanship**- Those members who have exhibiting in showmanship classes for 3 or More years.

GROOMING CLASSES

348 **Long Hair**- Those dogs that the exhibitor believes would be considered as a longhaired breed.
(example-collie)

349 **Short Hair**-Those dogs that the exhibitor believes would be considered as a shorthaired breed.
(example-beagle)

ALL MISSOURI STATE FAIR RULES APPLY