

# SHELBY COUNTY YOUTH FAIR

## July 10-15, 2023

### July 9, Sunday

3:00-5:00 pm	4H Building Checks in
4:30 - 6:00 p.m.	Check in FFA Exhibits
4:30 – 6:00 p.m.	Ham Check in

### July 10, Monday

8:00 a.m.	Poultry & Rabbit Registration
8:30 a.m.	Poultry Show Rabbit Show
	Rabbit Show immediately following Poultry Show
2:00 p.m.	Cattle in place (Cattle must be weighed by 2:30 p.m.)
4:00 p.m.	Bucket Calf Show followed by Jr. Cattle Show

### July 11, Tuesday:

4:00 p.m.	Sheep in place
5:00 p.m.	Sheep Show

### July 12, Wednesday:

3:30 p.m.	Cat Show
	Clover Kid Small Animal Show immediately following Cat Show
4:00 p.m.	Goats in place
5:00 p.m.	Goat Show

### July 13, Thursday:

8:30-9:30 a.m.	Market Hogs in place between
10:30 a.m.	Junior Market Hog Show
7:00 p.m.	Market Livestock Sale
7:00 p.m.	4-H Exhibits Released
8:00 p.m.	Building & Barn Clean-up

### July 15, Saturday:

9:00 a.m.	Dog Show
-----------	----------

# TABLE OF CONTENTS

GENERAL RULES .....	4
BUILDING SECURITY SCHEDULE .....	5
BUILDING EXHIBIT ENTRIES .....	6
EXHIBIT LISTS .....	9
PEE WEE SHOW .....	14
ANIMAL HEALTH REQUIREMENTS FOR EXHIBITION .....	16
OWNERSHIP RULES, LIVESTOCK SHOW & SALE, SALE ORDER .....	18
LAST YEARS BUYERS .....	19
COUNTRY CURED HAM .....	20
SHEEP SHOW .....	21
LIVESTOCK AWARDS-SHEEP .....	22
GOAT SHOW .....	23
LIVESTOCK AWARDS-GOATS .....	24
BUCKET CALF .....	25
BEEF SHOW .....	26
LIVESTOCK SHOW AWARDS-BEEF .....	27
SWINE SHOW .....	28
LIVESTOCK AWARDS-SWINE .....	30
RABBIT SHOW .....	30
POULTRY SHOW .....	31
CAT SHOW .....	32
CLOVER KIDS SMALL ANIMAL SHOW .....	33
DOG SHOW .....	34

Equal Opportunity is and shall be provided to all participants in Extension programs and activities, and for all employees and applicants for employment on the basis of their demonstrated ability and competence without discrimination on the basis of their race, color, religion, sex, sexual orientation, national origin, age, disability, or status as a Vietnam-era veteran. This policy shall not be interpreted in such a manner as to violate the legal rights of religious organizations or military organizations associated with the armed forces of the United States of America."

# NOTICE

1. The Shelby County Fair will be a reciprocating fair for 4H/FFA shows. This policy means Shelby County Fair shows are open to those counties that have equally reciprocating 4H/FFA shows. For a county to be considered reciprocating, Shelby County youth exhibitors are treated the same as in county exhibitors when dealing with ribbons, premiums, trophies and entry fees. This policy also states that if a mistake is made in participation of an exhibitor from a non-reciprocating county then that exhibitor will forfeit all stall fees, awards, and premiums.
2. An exhibitor's county is determined by 4H Club or FFA Chapter membership county. If the member participates in a county fair livestock sale, that county shall be determined as their home county.
3. The following list provides shows that are pre-approved as reciprocating. If you feel you are from a county that you believe is reciprocating and is not listed, you may contact the Shelby County Youth Fair Board by June 20<sup>th</sup> and provide a copy of your fair book for review and determination of eligibility to show.

## Pre-Approved Reciprocating Shows

- Audrain County Fair
- Chariton County Fair
- Monroe City FFA Show
- Monroe County Fair
- Lincoln County Fair
- Sullivan County Fair
- Randolph County Fair

## Counties NOT Considered to have Reciprocating 4H/FFA Jr Shows

- Adair County Fair
- Boone County Fair
- Clark County Fair
- Knox County Fair
- Lewis County Fair
- Linn County Fair
- Macon County Fair
- Marion County Fair
- Pike County Fair
- Putman County Fair
- Ralls County Fair
- Schuyler County Fair
- Scotland County Fair

## YOUTH FAIRBOARD COMMITTEE

### Livestock Superintendent:

Goat Superintendent – Kaytlyn Mefford  
Sheep Superintendent – Gina Pollard  
Beef Superintendent – Mitch Schmidt  
Ham Superintendent – Pat Greenwell  
Swine Superintendent – Matt Beach

Assistant – Scot Shively

Cat Show Superintendent – Kaytlyn Mefford  
Poultry Superintendent – Barbie Parrish  
Rabbit Superintendent – Barbie Parrish

### Youth Fair Board:

Harold Eckler, President  
Kaytlyn Mefford, Vice President  
Jenny Bradley, Treasurer  
Pat Greenwell, Secretary

### Members:

Barbie Parrish	
Matt Beach	Gina Pollard
Albert Meyers	Scot Shively
Matt McWilliams	
Heather Christine	Mitch Schmidt

Lyann Ritter – 4-H Youth Specialist  
Brenda Schreck— Livestock Specialist

## JUNIOR ACHIEVEMENT SHOW

### GENERAL RULES

1. 4-H Members must be in good standing with their club to be eligible to exhibit. (Attend 6 Club Meetings and meet other club & 4-H Council requirements). Any exhibit or exhibitor that does not meet exhibition guidelines or requirements may be decreased in ribbon rating or disqualified completely, at the discretion of the judge or superintendents.
2. Judges will award blue, red, and white ribbons according to merit of the exhibit. NO ribbon will be awarded to any exhibit that the judge considers to be unworthy of a ribbon.
3. Exhibitors will be paid premium money on no more than six (6) entries in a class. Total premium money divided by total points will give money value of each point. Point value shall not exceed 40 cents.
4. FFA membership eligibility should include enrollment in current FFA program or Junior High Ag program, which is in accordance with state FFA guidelines.
5. Every precaution shall be taken to protect exhibits, but neither the Fair Board nor the Youth Department will be responsible for any losses or damage to the exhibits.
6. Fair Exhibits are encouraged to remain until Thursday at 7:00 p.m.
7. Open to members of Shelby County 4-H Club or FFA member at North or South Shelby Schools. Clover Kids will be allowed to exhibit or show project work. They will receive one-dollar (\$1.00) premium money and will receive participation ribbons. They will not compete with 4-H members 8-19. They will not be allowed to sell livestock at sale. All Clover Kid members will exhibit in classes 0001. Rules for Clover Kid Animals see page 40.
8. If a member is unable to attend and show their inside exhibits, they must fill out an Absentee Interview Judging Form on the project and have the report attached to the project. In case of absentee they are not eligible for State Fair. Forms are at the Extension Office.
9. If someone fails to do a written report, that individual will receive no premium or ribbon.

All Livestock Exhibitors are strongly encouraged to pre-register their entries by noon on Sunday, July 9

- a. Beef – <https://forms.gle/SYfTzLBjbLVq4Ttd9>
- b. Sheep – <https://forms.gle/1EEoayg7hr23zF7DA>
- c. Swine – <https://forms.gle/spzu1N7xwMu6YG3SA>
- d. Goats – <https://forms.gle/wmuSw9e3P1QSrjq96>
- e. Rabbits – <https://forms.gle/dVs9Bim5Mgqve6tr7>
- f. Poultry – <https://forms.gle/HcrfgigP9f3i63x47>

***Exhibits will be released on Thursday, July 13, at 7:00 p.m.***

- **PLEASE MAKE ARRANGEMENTS FOR SOMEONE TO PICK EXHIBITS UP.**

4-H Club Entry Judging: Sunday, July 9 3:00-5:00 pm

Exhibit Entry: Sunday, July 9

Clubs should check in exhibits according to this schedule:

- |                  |                                     |
|------------------|-------------------------------------|
| 4:30 - 6:00 p.m. | Ham Check in                        |
| 4:30 – 6:00 p.m. | North Shelby FFA & South Shelby FFA |

All judging will be done by self-evaluation. Only judges, workers and members checking exhibits in are permitted in the hall. Parents should wait in designated waiting areas.

The learning experience of a boy or girl is greatly enhanced with the opportunity to self-evaluate. The term self-evaluation means that the member and the judge have the opportunity to go over the article to be evaluated.

Members should be prepared to explain to the judge methods used and why they were selected, reason for choosing the article, how or where it will be used, problems encountered and satisfaction gained. Together the member and the judge determine what ribbon the article should receive. This procedure gives the members a greater sense of personal involvement than does the judging of exhibits by an adult.

## 4-H BUILDING PROJECT EXHIBIT RULES

1. Entries will be accepted from Shelby County 4-H members only.
2. All exhibits must represent work accomplished by the member during the current program year and be owned by the exhibitor. Exhibits must be part of a 4-H project and not made as part of the requirements for a school project or other youth organization. Items made by 4-H members should reflect the skills they have learned in their 4-H project, the needs and interests of the 4-H'er, and quality workmanship.
3. All members must be enrolled in the project in which they exhibit and have attended at least half of their club meetings prior to July 9.
4. Clover Kids are non-competitive. They may display up to three items in the building at the fair. Items will be discussed, but not judged. Clover Kids will receive a green participation ribbon and the experience of conference judging.
5. Pre-entry forms are required for all 4-H members planning to enter items into the exhibit hall by Friday, June 11. Only members with items indicated on the pre-entry form are eligible for exhibition.
6. 4-H members may display only in projects in which they are enrolled in the current 4-H year. Items showcased must be made in the current year and must be the work of the 4-H member submitting the item. Each member is limited to three items per class at the county fair. They must be enrolled in the project to exhibit in that class. The most point's awards will be based on the top three exhibits in each project. State Fair items will receive two additional points; Alternate State Fair items will receive one additional point.
7. All items will be self-evaluated by the 4-H member. In case of illness, work, or vacation a leader may enter a member's item and they will be judged. A written explanation of how it was made, what was learned in the project and what could be improved must accompany the exhibit.
8. ONLY 4-H members and designated adult helpers will be allowed to assist in bringing items into the 4-H Center building during conference judging. Parents and leaders will not be allowed to be in the building during judging.
9. Each 4-H member is to have submitted their 4-H Project Entry Form prior to the fair, or have the form with them at the time of judging. Exhibit tags need to be attached to each the item and correctly filled out before coming to the fair and entering the building. Exhibit tags are available from your club leader or the Extension Office.
10. All entries will be judged using the Danish system of Blue, Red, or White ribbons. Blue ribbon items only are eligible for State Fair consideration.
11. A judge's decision is final.
12. All exhibits may be any item made, unless stated otherwise. Check specific projects for exhibit guidelines.
13. The 4-H member may display any item made in that project. This includes notebooks, file cards, photo displays, posters, or educational displays. Be sure to mark the exhibit tab with Project number and description. Size restrictions may apply. See additional information in Rule # 15.
14. Any exhibits using batteries such as circuit boards or robots should not connect the wires to the battery rather the wires should be taped behind the battery. Another option is to not attach a battery but indicate "battery goes here." This is to prevent potential fire hazards.

15. Because of display space and number of exhibits in certain projects dimension criteria is specified. Items, which do not comply with size or other specifications, will not be displayed or receive a ribbon. No posters, pictures, notebooks or patterns attached to projects.

- Poster - No larger than 14" x 22"; flat only; do not fasten items to the poster.

- Photo Display

- 1) Photos must be mounted on an 8" x 10" solid mounting surface.

- 2) The mounting surface should be mat board, in a color of the photographer's choice.

- 3) Photographs must be 8" x 10" or smaller

- 4) The mounted photo should be place in a clear plastic 8 ¼ x 10 ½ inch sleeve. Sleeves are intended to protect these special exhibits from handling, dust and humidity.

PLEASE NOTE:

- "Solid" requires that there are no cutouts or other holes in the mat board, either around or behind the photo.
- Mount photos on the smoothest side of the mat board, using an adhesive designed for permanent mounting of photographs.
- Digital Considerations
  - Techniques that can be performed in-camera, in a photo editing software program, or in a film darkroom are permissible. The line is drawn between "enhancing" and "altering" a photo
  - 1) Altering (editing to change the contents of a photo) is not permitted for exhibits  
Examples include adding a sunset or object, removing someone from the shot, airbrushing to cover a bad complexion , etc.
  - 2) Enhancing (editing to enhance the existing qualities of a photo) is permitted  
Examples include cropping, dodging, burning, brightness/contrast adjustment and red eye reduction

- Educational Display - Must not exceed 12 inches in height, 12 inches in depth (front to back) and 12 inches in width. Can include three-dimensional items and must stand-alone. (Posters with items taped to them do not qualify as an educational display. Science fair display boards are too large.)

- Entomology or Geology Display Boxes - Box must be no more than 18" long x 24" wide and 3 1/2" deep to fit in display racks. All boxes must have a clear display lid; not open boxes allowed. The insects or rocks should be named, labeled and mounted so the boxes can be displayed horizontally. Securely fasten display cover with tape or screws. If a member's collection is displayed in more than one box, the member may send one box for display.

- Scrapbooking – Exhibits should be only 1 page 1 side representative of the complete scrapbook.

- Size not to exceed 12" x 12".
- All pages should be in clear protective sleeve or clear zipper bag.
- Do not frame.

- Working Models - These exhibits should show how things actually work (cutaway-sections of motors or computers) or can be used to help people identify parts such as parts of a motor or computer. Many times these exhibits are considered "hands-on" and can be handled by visitors. Working models should require floor space no larger than 24"x 24".

- Decorated Cakes - The use of forms or pans is recommended. Cakes should not exceed 13" in height or at the base. Cake boards should not exceed 1" margin on each side of cake pan or form and is considered in the 13" base requirement. Cake boards should be sturdy, especially if using a cake pan. The use of Styrofoam forms is recommended. Must only use Royal Icing, Rolled Fondant or commercial product that will harden and preserve the decorated cake. (No real cakes, Butter crème icing or tube/gel icing - displays containing these items will be considered ineligible and will be rejected.) Adding Tylose powder to fondant will help it hold it shape in humidity. Cakes with candy decorations are allowed; however, avoid using candy that melts (e.g. M & M's, candy Canes, etc.)

- Notebooks: Youth should select 1 page that represents their notebook. The page should be in a plastic sleeve to protect it while on display.

16. Shooting Sports exhibits should contain no live ammunition and arrow points should be removed.

17. A member is limited to TWO items to the State Fair.

18. For the Missouri State Fair – Perishable items such as food, vegetables, crops and home grounds items will not be returned after the Fair. Edible vegetables will be donated to a charitable organization. These items are displayed in group settings not as individual projects.
19. For Missouri State Fair – Photographs of items too large or fragile: This category is restricted to: large items such as welding project or large woodworking items like furniture; fragile items such as delicate ceramic work. It is not intended as a substitute category for bringing or mailing projects. All pictures of projects should not exceed 4 x 6 inches, should not be mounted on anything, and should not have multiple pictures. Counties should send pictures individually rather than making a poster board of all the pictures. The tag should be attached. Indicate on the voucher that this is a project too large or fragile to come and what the project is.
20. For Missouri State Fair – No outdoor exhibit space is available. Please contact the State 4-H Office at 573-882-1441 for approval of large over-sized exhibits. Determination of items to be showcased will be left to the discretion of the 4-H Building Superintendent based on available space, prior approval and the safety of fair-goers. Submitting photographs of these items is encouraged.
21. Exhibits advancing to the Missouri State Fair must be marked with provided tags and packed to transport. Exhibitors need to indicate to the appropriate person, which if any projects they will be sending to state, so alternates can be contacted if needed.
22. For Missouri State Fair – All items must have a Missouri State Fair tag securely fastened to the item in a place that is visible to fair-goers. A second identification label is required on all items, except perishable items such as food, vegetables or crops. This label should give name and county of the 4-H member, and be placed in an inconspicuous spot. When an item includes more than one piece, each piece must be labeled with name and county. (Examples: jacket and skirt; rocket and rocket launcher; ceramic tea set; mittens, etc., should have an identifying label on each piece.) Textile items (clothing, knitting, visual arts, etc.) should have a cloth label sewn or safety-pinned into the item as a second label. Please remove all county or regional ribbons.
23. For Missouri State Fair - Hams and bacons will be dually enrolled in the Youth Class of the Country Ham and Bacon Class and may become eligible for sale if selected as Champion. The 4-H member is required to complete all Open Division entry forms which should accompany the project at check-in and pay the entry fee and processing fee which is required in the Agriculture Building. Only 4-H hams and bacons should be checked in and out of the 4-H Building.

THE SHELBY COUNTY YOUTH FAIR IS NOT BE RESPONSIBLE TO ANY PERSON,  
INDIVIDUAL, CORPORATION OR ASSOCIATION FOR ANY LOSS BY FIRE, THEFT,  
DAMAGE, PERSONAL INJURY SUSTAINED BY ANYONE, THROUGH THE  
NEGLIGENCE OF ANY PERSON OR GROUP OF PERSONS, EXHIBITS OR  
EXHIBITORS.

### **WHAT ARE THE RIBBON COLORS ALL ABOUT?**

Most people believe that judging starts at the blue ribbon and goes down. Not true. Judging begins at the red ribbon meaning the exhibit met the minimum requirements, shows an honest effort, but has some room for improvement.

A blue ribbon means the exhibit has exceeded the minimum standards and may have some small flaws where improvement may be made.

A white ribbon is probably the most misunderstood. A white ribbon does not indicate inferior work; it means the exhibit does not meet minimum standards. Many 4-H'ers have said that the white ribbons they received were the "spark" that got them started learning and led to blue ribbons later.

If you learned something, you are a winner no matter what the ribbon color!



## 4-H PROJECT LIST

### AEROSPACE

(Display on launch pad not more than 18" square in an upright position.)

- AS811 AEROSPACE LEVEL 1
- AS812 AEROSPACE LEVEL 2
- AS813 AEROSPACE LEVEL 3
- AS814 AEROSPACE LEVEL 4

### AGRONOMY

- AG982: Field Crops 1
- AG983: Field Crops 2
- AG984: Field Crops 3

### AMPHIBIANS AND REPTILES

AR611 AMPHIBIANS AND REPTILES (No live animals)

### ARTS AND CRAFTS

- AC311 ARTS AND CRAFTS
- AC312 ADVANCED VISUAL ARTS LEVEL 1
- AC313 ADVANCED VISUAL ARTS LEVEL 2
- AC314 ARTS & COMPUTERS
- AC315 SCRAPBOOKING

### BEEF

- BF121 BEEF UNIT 1
- BF122 BEEF UNIT 2
- BF123 BEEF UNIT 3
- BC135 BUCKET CALF

### BEEKEEPING

- EN924 BEEKEEPING 1
- EN925 BEEKEEPING 2
- EN926 BEEKEEPING 3

### BICYCLE

- BY731 BICYCLE UNIT 1
- BY732 BICYCLE UNIT 2

### BUTTERFLY WINGS

- EN927 BUTTERFLY WINGS

### CAKE DECORATING

(see building rule #13)

- CD361 CAKE DECORATING UNIT 1
- CD362 CAKE DECORATING UNIT 2
- CD363 CAKE DECORATING UNIT 3

### CAREER EXPLORATIONS

- CE100 CAREER EXPLORATIONS

### CATS

- CA177 CAT CARE UNIT 1
- CA178 CAT CARE UNIT 2
- CA179 CAT CARE UNIT 3

### CITIZENSHIP

- CI200 PUBLIC ADVENTURES

### CLOTHING

- CL521 SEWING LEVEL 1
- CL522 SEWING LEVEL 2
- CL523 SEWING LEVEL 3
- CL524 CLOTHES YOU BUY

### CLOVER KIDS

- CK481 CLOVER KIDS
- CLOWNING
- CW231 CLOWNING

### COMMUNICATIONS

- CM237 COMMUNICATIONS 1
- CM238 COMMUNICATIONS 2
- CM239 COMMUNICATIONS 3

### COMPUTERS

- CP895 SCRATCH
- CP896 ALICE
- CP897 OTHER LANGUAGES OR PROGRAMS

### CONSUMER SAVVY

- CS431 CONSUMER 1
- CS432 CONSUMER 2
- CS433 CONSUMER 3

### CROCHET

- CR321 CROCHET

### DAIRY

- DA131 DAIRY UNIT 1
- DA132 DAIRY UNIT 2
- DA133 DAIRY UNIT 3
- DA134 JUDGING DAIRY CATTLE

### DOGS

- DG171 DOG 1
- DG172 DOG 2
- DG173 DOG 3

### ELECTRICITY

Items should be made in accordance with the National Electrical Code. Consult power suppliers or electricians for code requirements. Battery operated items are also eligible items. Batteries should be disconnected or have a piece of black electrician tape placed on the ends.

- EL831 ELECTRICITY 1
- EL832 ELECTRICITY 2
- EL833 ELECTRICITY 3
- EL834 ELECTRICITY 4

## ENERGY

EG861 POWER OF THE WIND

## ENTOMOLOGY

(see building rule #13)

EN921 ENTOMOLOGY UNIT 1

EN922 ENTOMOLOGY UNIT 2

EN923 ENTOMOLOGY UNIT 3

## ENTREPRENEURSHIP

EP442 entrepreneurship 1

EP443 ENTREPRENEURSHIP 2

EP444 ENTREPRENEURSHIP 3

## ENVIRONMENTAL SCIENCE

EE914 EXPLORING ENVIRONMENT:

ECOSYSTEM SERVICES

EE915 EXPLORING ENVIRONMENT: EARTH'S  
CAPACITY

## EXPLORING 4-H

EX261 EXPLORING THE TREASURES OF 4-H

## FILMMAKING

FM270 FILMMAKING

## FINANCIAL LITERACY

FL421 FINANCIAL LITERACY 1

FL422 FINANCIAL LITERACY 2

## FOODS/NUTRITION/PRESERVATION

To be displayed food must be of reasonable quality to  
keep more than a week.

2. Submit food items on paper or disposable plates.

3. Please have samples (wrapped separately) available  
for two judges.

4. Biscuits, cookies, muffins and other small items  
should be four per plate. Non/Undecorated cakes  
should be displayed in mini-versions (portions of 1/3 to  
1/4 of a larger total product.)

FN551 FOODS 1

FN552 FOODS 2

FN553 FOODS 3

FN554 FOODS 4

FS566 FOOD SCIENCE 1

FS567 FOOD SCIENCE 2

FS568 FOOD SCIENCE 3

FS569 FOOD SCIENCE 4

FN557 INTERNATIONAL FOODS 1

FN561 MICROWAVE MAGIC 1

FN562 MICROWAVE MAGIC 2

FN563 MICROWAVE MAGIC 3

FN564 MICROWAVE MAGIC 4

FP500 FREEZING

FP501 DRYING

FP502 BOILING WATER CANNING

FP503 PRESSURE CANNING

## BREADS

Please have samples (wrapped separately) available for  
two judges. Bread products should be displayed in  
mini-versions (portions of 1/3 to 1/4 of a larger total  
product). Please send items on disposable plates only,  
unless it is a gift package.

FN581 BREADS

## FORESTRY

FO931 FORESTRY 1

FO932 FORESTRY 2

FO933 FORESTRY 3

## GEOLOGY

(see building rule #13)

GG941 GEOLOGY

## GEOSPATIAL

GS991 GEOSPATIAL 1

GS992 GEOSPATIAL 2

GS993 GEOSPATIAL 3

## GLOBAL EDUCATION

GE221 GLOBAL EDUCATION

## GOATS

GA125 MEAT GOATS 1

GA126 MEAT GOATS 2

GA127 MEAT GOATS 3

GA136 DAIRY GOAT 1

GA137 DAIRY GOAT 2

GA138 DAIRY GOAT 3

## HEALTH/FITNESS

HF711 BOWLING

HF712 GOLF

HF771 FIRST AID

HF772 STAYING HEALTHY

HF773 KEEPING FIT

HF775 MOVE ACROSS MISSOURI (MOVE)

## HOME ENVIRONMENT

HE471 HOME ENVIRONMENT 1

HE472 HOME ENVIRONMENT 2

HE473 HOME ENVIRONMENT 3

HE474 HOME ENVIRONMENT 4

## HORSE

HS140 HOSELESS HORSE & KNOWLEDGE

HS141 HORSE RIDING

## HORTICULTURE - FLOWERS

Live plants or cut specimens must be displayed in a  
container no larger than 8" in diameter. May be fresh or  
dried.

HO961 FLORICULTURE 1

HO962 FLORICULTURE 2

HO963 FLORICULTURE 3

HO964 FLORICULTURE 4

## HORTICULTURE – GARDENING

The number in parentheses is the number of items displayed. The 4-H'er must have grown the vegetables. The following guidelines should be followed:

1. Vegetables must be of reasonable quality to keep more than a week.
2. Use disposable containers (paper plates or boxes) to display the items.

Beets (4)	Cantaloupe (1)
Cucumbers (slicing) (4)	Egg Plant (2)
Onions-dry (4)	Peppers (4)
Potatoes (4)	Pumpkin (1)
Summer Squash (2)	Tomatoes (4)
Watermelon (1)	Winter Squash (1)

Other vegetables (1 for larger and 4 for smaller produce).

HO971 GARDENING 1

HO972 GARDENING 2

HO973 GARDENING 3

HO974 GARDENING 4

## KNITTING

KN331 KNITTING UNIT

## LANDSCAPE DESIGN

LD975 LANDSCAPE DESIGN 1

LD976 LANDSCAPE DESIGN 2

LD977 LANDSCAPE DESIGN 3

## LEADERSHIP

LD271 LEADERSHIP 1

LD272 LEADERSHIP 2

LD273 LEADERSHIP 3

## LIVESTOCK JUDGING

LJ117 LIVESTOCK JUDGING

## MEATS – COUNTRY CURED

ME114 COUNTRY CURED BACON

ME115 COUNTRY CURED HAM

ME116 MEAT EVALUATION PROJECT

## OUTDOORS ADVENTURES

OA761 OUTDOOR 1 (HIKING)

OA762 OUTDOOR 2 (CAMPING)

OA763 OUTDOOR 3 (BACKPACKING EXPEDITIONS)

## PETS

PE101 PETS 1

PE102 PETS 2

PE103 PETS 3

PE104 GUINEA PIGS (CAVIES)

## PHOTOGRAPHY

(see #14 for additional guidelines)

PH351 PHOTOGRAPHY 1

PH352 PHOTOGRAPHY 2

PH353 PHOTOGRAPHY 3

## POULTRY

PO151 POULTRY 1

PO152 POULTRY 2

PO153 POULTRY 3

## PUBLIC SPEAKING

PS242 PUBLIC SPEAKING

## QUILTING

QU341 QUILTING 1

QU342 QUILTING 2

QU343 QUILTING 3

QU344 QUILTING 4

QU345 QUILTING 5

QU346 QUILTING 6

## RABBITS

RB111 RABBITS 1

RB112 RABBITS 2

RB113 RABBITS 3

## ROBOTICS

RO881 JUNK DRAWER ROBOTS 1

RO882 JUNK DRAWER ROBOTS 2

RO883 JUNK DRAWER ROBOTS 3

RO884 ROBOTICS 1: WITH EV3

RO885 ROBOTICS 2: EV3N MORE

RO886 ADDITIONAL ROBOTICS PLATFORMS

## SELF DETERMINED

SD950 SELF-DETERMINED: Citizenship, Leadership, and Communication

SD951 SELF-DETERMINED: Healthy Living

SD952 SELF-DETERMINED: Science

## SHEEP

SH161 SHEEP 1

SH162 SHEEP 2

SH163 SHEEP 3

## SHOOTING SPORTS

No live ammunition and no points on arrows.

SS740 SHOOTING SPORTS SAFETY

SS741 ARCHERY

SS742 AIR (BB and/or Pellet) RIFLE

SS743 SMALLBORE RIFLE

SS744 AIR PISTOL

SS745 SHOTGUN

SS747 SMALLBORE PISTOL

SS748 MUZZLELOADING

SS749 HUNTER AND OUTDOOR SKILL

SS750 WESTERN HERITAGE & COWBOY

SHOOTING

## SMALL ENGINES

SE851 SMALL ENGINES 1

SE852 SMALL ENGINES 2

SE853 SMALL ENGINES 3

SOIL AND WATER SCIENCE

SW916 SOIL & WATER SCIENCE 1

SW917 SOIL & WATER SCIENCE 2

SW918 SOIL & WATER SCIENCE 3

SPORTFISHING

SF725 SPORT FISHING 1

SF726 SPORT FISHING 2

SF727 SPORT FISHING 3

SWINE

SW181 SWINE 1

SW182 SWINE 2

SW183 SWINE 3

THEATRE ARTS

TA251 THEATRE ARTS 1

TA252 THEATRE ARTS 2

TA253 THEATRE ARTS 3

TRACTOR

AT820 TRACTOR 1

AT821 TRACTOR 2

AT822 TRACTOR 3

AT823 TRACTOR 4

VETERINARY SCIENCE

VS191 VETERINARY SCIENCE 1

VS192 VETERINARY SCIENCE 2

VS193 VETERINARY SCIENCE 3

WEATHER AND CLIMATE SCIENCE

WC934 WEATHER & CLIMATE SCIENCE 1

WC935 WEATHER & CLIMATE SCIENCE 2

WC936 WEATHER & CLIMATE SCIENCE 3

WELDING

WE846 WELDING

WILDLIFE

WI720 WILDLIFE CONSERVATION 1

WI721 WILDLIFE CONSERVATION 2

WI722 WILDLIFE CONSERVATION 3

WOODWORKING

WO871 WOODWORKING 1

WO872 WOODWORKING 2

WO873 WOODWORKING 3

WO874 WOODWORKING 4

## FFA FARM MECHANICS EXHIBIT



Entries must be in place by 4:30 p.m. Sunday, July 9, 2022 and must be picked up on Thursday, July 7 at 7:00 P.M. Entries will be judged on the basis of workmanship, design, safety and appearance.

Each exhibitor is limited to six entries per class, except horticulture where 6 entries are allowed. Articles must be painted or properly treated and must be cleaned and in presentable condition even though they may have been used.

The points assigned to projects are based upon the amount and difficulty of the work involved and the cost of materials. The points given are for average projects and may be adjusted up or down when a project is unusual in size and difficulty, and it appears necessary in order to keep the points in balance.

<u>CLASS</u>		<u>POINT VALUE</u>
FFA 1	Utility trailer .....	30 20 10
FFA 2	Bale trailer .....	60 40 20
FFA 3	Livestock trailer .....	75 50 25
FFA 4	2 axle trailer .....	45 30 15
FFA 5	Deer Stand .....	9 6 3
FFA 6	Wagon.....	45 30 15
FFA 8	Scraper blade .....	45 30 15
FFA 9	Big bale carrier .....	30 20 10
FFA 10	Barrel feed trough.....	9 6 3
FFA 11	Post Puller.....	6 4 2
FFA 12	Log spitter.....	24 16 8
FFA 13	Hay feeder.....	30 20 10
FFA 14	Feed bunk (wood).....	24 16 8
FFA 15	Sheep trough (wood).....	9 6 3
FFA 16	Picnic table (wood).....	12 8 4
FFA 17	Lawn Swing with frame.....	12 8 4
FFA 18	Welding table.....	9 6 3
FFA 19	Sawhorse (pair)wood or metal.....	6 4 2
FFA 20	Jackstand (pair).....	6 4 2
FFA 21	Car ramp (pair) .....	6 4 2
FFA 22	Engine stand.....	9 6 3
FFA 23	Gate.....	9 6 3
FFA 24	Miscellaneous .....	Assigned
FFA 24A	Scrapbook .....	12 8 4

### CROPS

Plants (small grain, legume, grass, soybeans) 3" bundle

Grains (small grain, soybeans) 1 gallon container		Corn - 6 ears/1 stalk	Hay - 6" slab
FFA 25	Corn production .....	6 4 2	
FFA 26	Soybean production .....	6 4 2	
FFA 27	Small Grain ( break out wheat, oats, milo).....	6 4 2	
FFA 28	Legumes & Grasses .....	6 4 2	
FFA 29	Legume Hay.....	6 4 2	
FFA 30	Grass Hay.....	6 4 2	

### ELECTRICITY

FFA	36	Projects made using electrical materials.....	6	4	2
-----	----	---	---	---	---

### HORTICULTURE

FFA	31	Bedding Plants (at least 6 plants).....	6	4	2
FFA	32	Vegetables .....	3	2	1
		(Any home grown item - use 4-H guidelines)			
FFA	33	Flowering Pots .....	6	4	2
		(1 to 3 plants in 6" pots or hanging baskets)			
FFA	34	Foliage Plants .....	6	4	2
		(1 to 3 plants arranged in 6" pots or hanging baskets)			
FFA	35	Flower Arrangement.....	6	4	2

### METAL

FFA	45	Pot Hanger .....	3	2	1
-----	----	------------------	---	---	---

### SMALL ENGINES

FFA	37	Any engines overhauled, rebuilt & repainted .....	6	4	2
-----	----	---	---	---	---

### WOODWORKING

FFA	39	Bird House .....	3	2	1
FFA	40	Flower Box .....	6	4	2
FFA	41	Tin Picture Frame .....	3	2	1
FFA	42	Wishing Well .....	9	6	3
FFA	43	Wood Bench .....	6	4	2
FFA	44	Wood Shelf .....	6	4	2

## Open Pee Wee Show

Age group 7 and under can show in the Pee Wee Show.

Will be held before the regular show for each of the following species:

Cattle, Bucket Calf, Swine, Sheep, Goats, Rabbits and Poultry.

No premiums paid.

This is not a part of the Missouri 4-H program.

## Animal Health Requirements For Exhibition

The following is a SUMMARY, and not a reprint of 2 CSR 20-2.040 Animal Health Requirements for exhibition regulations. Rules subject to revision by the Missouri State Veterinarian at any time. Contact the Missouri State Veterinarian's office at (573) 751-4359 for clarification on the following:

### 1. Certificate of Veterinary Inspection/General Requirements.

- A. All animals must have a Certificate of Veterinary Inspection or a paper copy of an electronic Certificate of Veterinary Inspection unless specifically exempted. The Certificate of Veterinary Inspection must show the number of animals(s) covered by the document, listing individual identification, the purpose for which the animals are to be moved, the points of origin and destination, the consignor and the consignee.
  - B. The Certificate of Veterinary Inspection is valid for thirty (30) days.
  - C. Animals with active lesions of ringworm or warts will not be permitted to exhibit and shall be subject to isolation and expulsion
  - D. Sales scheduled in association with exhibitions must employ a veterinarian to examine animals and process Certificate of Veterinary Inspection for change of ownership. The following are requirements for animals EXHIBITED in Missouri. Animal sold in addition to being exhibited must meet entry requirements of Missouri.
- ### 2. Exhibition requirements for Cattle in Missouri.
- A. Intrastate (cattle in Missouri moving for exhibition only).
    - 1. No Certificate of Veterinary Inspection required.
    - 2. Brucellosis – no test or vaccination is required.
    - 3. Tuberculosis – no test is required.
  - B. Interstate (cattle from another state entering Missouri for exhibition only)
    - 1. Brucellosis -
      - A. Cattle from Brucellosis- Free States
        - 1. Certificate of Veterinary Inspection required with official individual identification for each animal listed.
    - 2. Brucellosis
      - A. Cattle from Brucellosis-free states.
        - 1. All cattle may enter without a brucellosis test.
        - 2. Steers. No test required but the steer(s) must be listed and identified on a Certificate of Veterinary Inspection.
      - B. Sexually intact cattle from Brucellosis Class A states. All test-eligible animals must be tested and negative within thirty (30) days prior to entry except –
        - 1. Cattle from a certified brucellosis-free herd. The certified herd number and date of the last herd test date must be listed on the Certificate of Veterinary Inspection; and
        - 2. Rodeo bulls from a Class A state must have a negative brucellosis test within twelve (12) months.
  - 3. Tuberculosis.
    - A. Beef – all beef breeding cattle six (6) months of age or over entering Missouri for exhibition only must meet one of the following requirements:
      - 1. Originate from a tuberculosis-free state.
      - 2. Originate from a tuberculosis-accredited free herd. The herd number and current herd date must be listed on the Certificate of Veterinary Inspection

- 3. Test negative within sixty (60) days of exhibition.
- B. Dairy – all sexually intact dairy cattle six (6) months of age and older entering Missouri for exhibition only must meet one of the following requirements:
  - 1. Negative to an official tuberculosis test within sixty (60) days prior to exhibition
  - 2. Originate from an accredited tuberculosis-free herd. The herd number and current herd test date must be listed on the Certificate of Veterinary Inspection.

### 3. Exhibition requirements for Swine.

- A. Intrastate (swine in Missouri moving for exhibition only)
  - 1. No Certificate of Veterinary Inspection is required
  - 2. Brucellosis – no test required
  - 3. Pseudorabies – no test required
- B. Interstate (swine from another state entering Missouri for exhibition only.)
  - 1. A Certificate of Veterinary Inspection is required. All swine must be identified by ear tag, ear notch, tattoo and individually listed on the Certificate of Veterinary Inspection.
  - 2. Brucellosis –
    - A. Breeding swine originating from brucellosis-free states may exhibit without a brucellosis test.
    - B. Breeding swine originating from a brucellosis stage II states must be tested negative within sixty (60) days prior to exhibition except breeding swine from a validated brucellosis-free herd. The validated herd number and the date of the last validating test must be listed on the Certificate of Veterinary Inspection.
  - 3. Pseudorabies –
    - A. Swine originating from a state classified as State VI the National Pseudorabies (PRV) Eradication Plan may exhibit without a pseudorabies test.
    - B. All other swine must be tested negative within sixty (60) days prior to exhibition except from a qualified pseudorabies-free herd. The qualified herd number and date of the last qualifying test must be listed on the Certificate of Veterinary Inspection.

### 4. Exhibition Requirements for Sheep.

- A. Intrastate (sheep in Missouri moving for exhibition only)
  - 1. Sheep must be free of clinical signs of an infection or contagious disease.
  - 2. All sheep, including wethers, must be accompanied by a Certificate of Veterinary Inspection or a paper copy of an electronic Certificate of Veterinary Inspection showing official identification (ear tag, electronic implant, or registration tattoo) as defined in Part 79 of the Code of Federal Regulations. If electronic implants are used for identification, owner/manager must provide electronic implant reader.
  - 3. No test required.
- B. Interstate (sheep from another state entering Missouri for exhibition only).
  - 1. Sheep must be free of clinical signs of an infectious or contagious disease.

2. All sheep, including wethers, must be accompanied by a Certificate of Inspection or a paper copy of an electronic Certificate of Veterinary Inspection showing official identification (ear tag, electronic implant or registration tattoo) as defined in Part 79 of the Code of Federal Regulation. If electronic implants are used for identification, owner/manager must provide electronic implant reader.
  3. No test required.
5. Exhibition requirements for Goats
- A. Intrastate (goats in Missouri moving for exhibition only).
    1. Goats must be free of clinical signs of an infectious or contagious disease.
    2. All goats, including wethers, must be accompanied by a Certificate of Veterinary Inspection or a paper copy of an electronic Certificate of Veterinary Inspection showing official identification (ear tag, electronic implant or registration tattoo) as defined in Part 79 of the Code of Federal regulations. If electronic implants are used for identification, owner/manager must provide electronic implant reader.
    3. No test required.
  - B. Interstate (goats from another state entering Missouri for exhibition only).
    1. Goats must be free of clinical signs of an infectious or contagious disease.
    2. All goats, including wethers, must be accompanied by a Certificate of Veterinary Inspection or a paper copy of an electronic Certificate of Veterinary Inspection showing official identification (ear tag, electronic implant or registration tattoo) as defined in Part 79 of the Code of Federal regulations. If electronic implants are used for identification, owner/manager must provide electronic implant reader.
    3. No test required.
6. Exhibition requirements for Equine.
- A. Intrastate (equine in Missouri moving for exhibition only).
    1. Equine that are to be exhibited must be free of clinical signs of an infectious or contagious disease. Any equidae showing signs of infectious or contagious disease at an exhibition may be excused by the official inspecting veterinarian. When an official inspecting veterinarian is present, all equidae will be subject to daily inspection.
    2. A Certificate of Veterinary Inspection is not required.
    3. All equidae (except nursing foals accompanied by their dams) must be accompanied by a current VS Form 10-11 or any officially recognized state EIA test chart showing the graphic description of all markings needed for identification, or microchip, or legible tattoo, or unique registered brand. A certified photocopy or certified facsimile of the VS Form 10-11 or any officially state EIA test chart may be accepted for the purpose of exhibition.
  - B. Interstate (equine from another state entering Missouri for exhibition only).
    1. Equine that are to be exhibited must be free of clinical signs of an infectious or contagious disease. Any equidae showing signs of infectious or contagious diseases at an exhibition may be excused by the official inspecting veterinarian. When an official inspecting veterinarian is present; all equidae will be subject to daily inspection.
    2. A Certificate of Veterinary Inspection is not required.
3. All equidae (except nursing foals accompanied by their dam) must be accompanied by a current VS Form 10-11 or any officially recognized state EIA test chart showing the graphic description of all markings needed for identification, or microchip, or legible tattoo, or unique registered brand. A certified photocopy or certified facsimile of the VS Form 10-11 or any officially recognized state EIA test chart may be accepted for the purpose of exhibition.
  4. Alteration or substitution of any information on any VS Form 10-11 including certified photocopy or certified facsimile or any official copy of a Certificate of Veterinary Inspection shall cause the document to be invalid and in violation of sections 267.010 to 267.730, RSMo, and may result in civil penalties not to exceed ten thousand dollars (\$10,000) per violation and subject to expulsion.
  5. A six (6) month passport from states with which there is a reciprocal agreement will be accepted in lieu of VS Form 10-11. These passports must have proof of a negative EIA test within thirty (30) days of the date of application of the passport and permanent identification for each horse by means of registered brand, legible tattoo, or microchip to be recorded on the passport and the VS Form 10-11 or any officially recognized state EIA test chart, along with other identifying characteristics. In the event of confirmed vesicular stomatitis in any of the states with which reciprocal agreements exist, use of the six (6) month passport will be suspended by the state veterinarian of Missouri.
  6. Venezuelan Equine Encephalomyelitis (VEE) vaccination and entry permit is required prior to entry on equidae originating from states in which VEE has been diagnosed within the preceding twelve (12) months.
  7. Any equine originating from a premise under quarantine for Vesicular Stomatitis shall obtain an entry permit and must include the statement on the Certificate of Veterinary Inspection that "the equine listed have been exposed to Vesicular Stomatitis or located within ten (10) miles of premises quarantined for Vesicular Stomatitis within the past thirty (30) days."
- C. The board, organization or manager of each assembly or event is responsible for certifying that all Equidae admitted or participating meet the regulations in this section and shall not admit or allow participation of equidae not so certified. Untested equidae shall not be allowed to congregate with other equidae. The owner of each animal shall comply with requirements 267.010 to 267.730, RSMo, and may be assessed civil penalties not to exceed ten thousand dollars (\$10,000) for each violation.
7. Exhibition requirements for Poultry and Waterfowl.
- A. Intrastate (poultry and waterfowl in Missouri moving for exhibition only).
    1. All poultry and waterfowl to be exhibited must be free of all clinical signs of any infectious and contagious disease.
    2. No Certificate of Veterinary Inspection is required.
    3. Pullorum-Typhoid test. All poultry (except waterfowl) exhibited shall be tested negative for pullorum- typhoid within ninety (90) days prior to exhibition or originate from a flock approved by the National Poultry Improvement Plan (NPIP) or an equivalent program which has been tested within the past twelve (12) months with no change of ownership. This information shall be documented on a VS Form 9-2 (see 2 CSR 30-8.020) or similar certificate which



shall accompany the poultry to the exhibition and shall be made available on request.

B. Interstate (poultry and waterfowl entering Missouri for exhibition only).

1. All poultry and waterfowl to be exhibited must be free of clinical signs of any infectious or contagious disease.
2. A Certificate of Veterinary Inspection is required.
3. Pullorum-Typhoid test. All poultry (except waterfowl) exhibited shall be tested negative for pullorum-typhoid within ninety (90) days prior to exhibition or originate from a flock approved by the National Poultry Improvement Plan (NPIP) or an equivalent program which has been tested within the past twelve (12) months with no change of ownership. This information shall be documented on a VS Form 9-2 (see 2 CSR 30-8.020) or similar certificate which shall accompany the poultry to the exhibition and shall be made available on request.

4. An entry permit is required.

C. Requirements for sponsoring exhibitions for Poultry and Waterfowl.

1. An official representing the person or organization sponsoring the exhibition shall notify the state veterinarian no later than thirty (30) days prior to the exhibition giving the names, place, inclusive dates and times of the event.
2. Record Keeping. The sponsor of the exhibition shall compile a list of all poultry and waterfowl pre-sent at the exhibition. The list shall contain the name and address of

each owner, the number, species, breed, variety, type, sex and pullorum-typhoid status of all poultry present. A copy of this list shall be made available upon request to a representative of the department.

3. Inspection. All poultry and waterfowl to be exhibited must be free of clinical signs of any infectious or contagious disease. A representative of the department shall have access to the exhibits and may conduct inspections and tests as deemed necessary.

8. Exhibition requirements for Dogs and Cats.

A. Intrastate (dogs and cats in Missouri moving for exhibition only).

1. A Certificate of Veterinary Inspection is not required.
2. Dogs and cats four (4) months of age or older must be vaccinated for rabies by one (1) of the methods and within the time period published in the current Compendium of Animal Rabies Vaccines by the National Association of State Public Health Veterinarians, Inc.

B. Interstate (dogs and cats from another state entering Missouri for exhibition only).

1. A Certificate of Veterinary Inspection is not required.
2. Dogs and cats four (4) months of age or older must be vaccinated for rabies by one (1) of the methods and within the time period published in the current Compendium of Animal Rabies Vaccines by the National Association of State Public Health Veterinarians, Inc.
3. No entry permit is required.

## Ownership of Animals

Exhibitors must have had proper ownership of the following species with an ear notch (required for swine) or ear tag to be turned ownership papers turned in to the Extension Office for identification purposes, by the following dates:

- Swine by April 14, 2023
- Steers/Market Heifer by Feb. 27, 2023
- Market Lambs by May 15, 2023
- Bucket Calf by June 1, 2023
- Horse by May 1, 2023
- Dogs by April 1, 2023
- Market Goats by May 17, 2023
- Other breeding livestock by July 1, 2023
- Cats by May 15, 2023
- Rabbits & Poultry by June 1, 2023.

☒ There should be no co-owned livestock, except with immediate family members.

All livestock exhibits will be limited to two-market animals per species.

### Rate of Gain Awards will follow these guidelines

#### Daily Gain Per Day

- Steers – Blue – 3lbs. & above  
Red – 2.25 – 2.99  
White – below 2.25
- Goat – Blue - .50  
Red - .25-.49  
White - .24
- Swine – Blue - 1.75 & above  
Red - 1.5 – 1.74  
White – below 1.5
- Sheep – Blue .75 & above  
Red - .5 - .74  
White – below .5

## Livestock Sale Rules

1. An exhibitor must be present to show and sell.
2. An exhibitor must be a Shelby County 4-H or FFA member, in good standing to show and sale.
3. No cryptorchid will be allowed to show or sell for market lambs, goats, steers, or market hogs.
4. White ribbon hams will not be sold.
5. Each 4-H/FFA exhibitor is allowed to sell only one specie or ham at the 4-H/FFA sale.
6. Steers, goats and sheep will sell in the sale by order of Grand Champion, Reserve Champion, and then placing in the class. Swine will sell in the sale by Grand Champion, Reserve Champion and then by draw of order.
7. Sell all animal species and hams per item, Premium Only.
8. Hams will be sold in placing order. In case of a tie, the names will be randomly drawn.
9. Entries in the following classes are eligible to enter the sale:
  - Country Cured Hams
  - Market Lamb – Class 94
  - Market Goat – Class 95
  - Market Steer/Heifer – Class 278
  - Market Hog – Class 180
  - Rabbit Meat Pen of 3 – Class 186
  - Poultry Pen of 3 Fryers – Class 456
10. All livestock sellers will have \$2.00 taken off their livestock check to cover the thank you ad for the local newspapers.

## SALE ORDER:

SHEEP, GOATS, CATTLE, HOGS, RABBITS, POULTRY & HAMS

\*\* Selling all Grand & Reserve Champion of each species first. After all Champions are sold the sale will proceed with the rest of each species.

## We would like to thank the following People & Businesses who purchased Livestock or Hams at the 2022 Shelby County Youth Fair

12D Construction  
Aaron & Missy Kendrick  
Barb & Mike Buckman  
Barry's Elevator  
Beard Implement  
Billy Latchford  
Brad Pollitt State Rep  
Branches Salon  
Braungardt Ag  
C-COM  
Chinn Feed Mill  
Chinn Hog Farms  
Clint Prange  
Community State Bank  
Conrad Farms  
Deb Mayes, DVM  
Ensor Brothers  
Exchange Bank  
Farmers Elevator  
Farmers Mutual Ins Of Shelby Co  
Four RD  
Gale & Pat Buckman  
Greg Sharpe State Rep  
Hammond Trucking  
Heartland  
Jay & Michelle Collins  
Jim & Diana Chinn  
Jordan Watson Burris Seed  
Krieg Sales Co

Latchford Family Farms  
MA Bank  
Mesmer Fertilizer  
Michael Gill  
Michelle Novinger  
NEMO Coop  
Northeast Diesel  
Northeast Veterinary Service  
Oswald Crow Agency  
Peoples Land Company  
POET - Laddonia  
Red Barn Vet  
Ricketts Farm Service  
Scott Utterback  
Sellenriek Construction  
Senator Cindy O'Laughlin  
Simpson Building Supply  
Strayhorn Construction  
Sydenstricker Nobbe - Macon  
Sydenstricker Nobbe - Palmyra  
Tiger Country Reality  
Tillitt Collision  
Tim's Home Center  
Tom Gill  
TPNB Bank  
Tyler Otto  
United State Bank  
Wilt Angus Farms

### **A Special Thank You Goes To:**

\* Thanks to Ricketts Farm Service for the use of their scales.

\* Northeast Mo. Coop Service, Shelby County Implement, DCF Electric and Midwest Tire, Double A Angus, & St. Mary & St. Patrick Knights of Columbus for donating extra money for the Shelby County Youth Fair Exhibitors above the regular premium.

\*Thank you to Joyce's Embroidery & her sponsors, for the T-shirts for the 4-H & FFA Fair Exhibitors.

\*Thank you to Nutrien Ag for sponsoring the Buyer's Appreciation Dinner.

# Country Cured Hams

Sunday, July 9, 2023

Ham check in 4:30 – 6:00 p.m.

Hams will be released on Thursday, July 13 after the sale.

Superintendent – Pat Greenwell

1. Exhibitors in the Country Cured Ham project MUST BE PRESENT to Check in and weigh their hams.
2. Only first time Ham members must have attended one of the two Ham Workshop to be able to sell in the Livestock sale.
3. Hams will be divided into 3 classes.
4. No Borax or other non-FDA approved substances may be used on the hams.
5. Exhibitor may sell one (1) Ham at the sale, (providing they are not selling any livestock).
6. Sale order: Grand Champion, Reserve Champion.
7. White ribbon hams will not be sold in the sale.
8. Sell all hams per item, Premium Only.
9. Hams will be sold in placing order. In case of a tie, the names will be randomly drawn.

## TROPHY

Grand Champion Country Cured Ham  
Times Remembered Inspired by Julie

Reserve Champion Country Cured Ham  
South Shelby Blue and Gold Club



Hams will be judged in three classes

Class breaks to be determined on the day of the show

# SHEEP SHOW

Tuesday, July 11, 2023

Sheep in place by: 4:00 p.m.    Sheep Show 5:00p.m.

Superintendent: Gina Pollard

1. Required date of ownership for Breeding Stock is July 1; for Market Lamb it is May 15.
2. Each exhibitor will be responsible for his own feed, bedding, equipment, and cleaning of his pen before leaving the fairgrounds. No straw in the Livestock Barn.
3. An animal must be shown in at least one class to be eligible to participate in the Rate-of-Gain classes.
4. All rams must be purebred. The market classes may be purebred or crossbred.
5. Breeding sheep will show as yearlings or lambs. Base date for breaking classes will be September 1, 2021.
6. There will be a class provided for any breed present.
7. Point Value: Blue - 30, Red - 20, White - 10
8. Breeding Stock to be shown in Breeding Classes should be eligible for registration in their respective breed association.
9. They must be certified weights by project leader and be recorded on identification sheets. Others must have project leader, FFA Advisor or Veterinary signature on the Sheep I.D. Form and be turned in by May 15.
10. Sheep must have Scrapie Tags
11. All livestock exhibitors must observe the health regulations as stated for each livestock division.
12. Market Lambs weigh-in is optional on May 7, 2022, must have ear tag or tattoo.
13. Crossbred ewe lambs will be split by weight.
14. All exhibitors must attend an exhibitor meeting 30 minutes prior to the show.

## SHEEP CLASSES

	Dorset	Hampshire	Montadale	Suffolk	Southdown	Tunis	Shropshire	Other Purebred	Crossbred
Yearling Ram (between 1&2 years)	40	46	52	58	64	70	76	82	
Fall Ram Lamb (born between Sept.1 –Dec. 31, 2022)	41	47	53	59	65	71	77	83	
Ram Lamb (born after Jan. 1, 2023)	42	48	54	60	66	72	78	84	
Yearling Ewe (between 1&2 years)	43	49	55	61	67	73	79	85	91
Fall Ewe Lamb (born between Sept. 1– Dec. 31, 2022)	44	50	56	62	68	74	80	86	92
Ewe Lamb (born after Jan. 1, 2023)	45	51	57	63	69	75	81	87	93

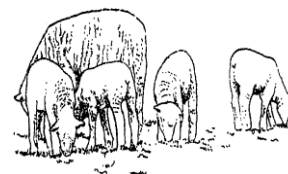
## MARKET LAMB CLASSES

Market Lambs (ewes or wethers born after Jan. 1, 2023). An animal cannot show in both Market & Breeding classes.

Market Lambs - All Breeds - 94

Shelby Co. exhibitors only. One entry per exhibitor, and the placing will determine order of sale.

A Champion and Reserve Champion will be awarded trophies.



PERFORMANCE CLASS (Rate of gain figured from weigh-in date to fair date)

Performance Market Lambs - All Breeds - 95

### Home Raised Class

Any animal whose dam is owned by the exhibitor or a member of the immediate family (father, mother, brother, sister, or legal guardian or grandparents only), at the time of birth, and is born on the local property that is owned or managed by the immediate family of the exhibitor is eligible. The animal must be cared for from birth to exhibition by the exhibitor on the local property. The dam does not have to be owned by the exhibitor/family at the time of breeding.

- Open to Shelby Co. 4-H or FFA member only Animal must have been shown in a 4H & FFA class to be eligible for the home-raised class.

# SHEEP SHOW

## GRAND CHAMPION MARKET LAMB (OVERALL)

Pollard Show Lambs

## RESERVE GRAND CHAMPION MARKET LAMB (OVERALL)

North Shelby FFA Chapter

## CHAMPION HOME RAISED LAMB

Exchange Bank, Shelbyville, MO

## RESERVE CHAMPION HOME RAISED LAMB

Red Barn Veterinary Clinic, Shelbyville, MO.

## CHAMPION HOME RAISED BREEDING SHEEP

Parson/Snow Farms (Shelby Co. Only)

## SHEEP SHOWMANSHIP AWARD (8-10)

Parson/Snow Farms

## SHEEP SHOWMANSHIP AWARD (11-13)

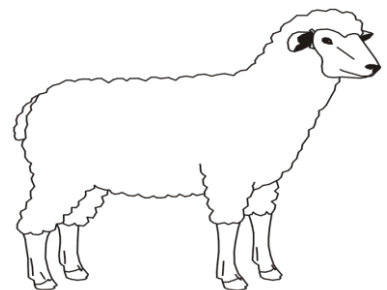
Northeast Glass Co.

## SHEEP SHOWMANSHIP AWARD (14 & OVER)

Eckler Acres

## MARKET LAMB RATE-OF-GAIN

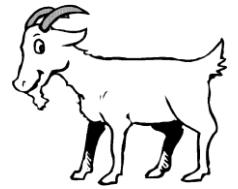
Brush Creek Farms – Scott Long



# GOAT SHOW

Wednesday, July 12

Goats in place by: 4:00 p.m. Show – 5:00 p.m.



Superintendent – Kaytlyn Mefford

1. All goat must be owned and cared for by the exhibitor prior to May 15, 2023
2. All goats with exceptions of wethers, must have been born prior to January 1, 2023.
3. Market Goats weigh- in is optional on May 6, 2023, must have an ear tag or tattoo.
4. They must be certified weights by project leader, and be recorded on identification sheets. Others must have project leader, FFA Advisor or Veterinary signature on the Goat I.D. Form and be turned in by May 15.
5. Exhibitors are limited to two entries per class.
6. All exhibitors are responsible for having appropriate health papers for all animals.  
(See the Health Regulation in this fair book.)
7. Each exhibitor will be responsible for his own feed, bedding, equipment, and cleaning of his pen before leaving the fairgrounds. No Straw in the Barn.
8. Each animal may enter in 1 class only.
9. Goats must have Scrapie tags.
10. Does can show in the market goat show or breeding Class
11. All exhibitors must attend an exhibitor meeting 30 minutes prior to the show.

Class	DAIRY BREEDS	Points
10	Jr. Doe-age 12 mos. & under	30-20-10
20	Jr. Doe-age 13-24 mos.	30-20-10
30	Sr. Doe-age 2 yrs & older	30-20-10
35	Billy Goat 2 yrs & under	30-20-10

Class	MEAT BREEDS	Points
40	Jr. Doe-age 6-12 mos.	30-20-10
50	Jr. Doe-age 13-24 mos.	30-20-10
60	Sr. Doe-age 2 yrs & older	30-20-10
65	Buck Goat 2 yrs & under	30-20-10

Class	OTHER BREEDS	Points
70	Jr. Doe-age 6-12 mos.	30-20-10
75	Jr. Doe-age 13-24 mos.	30-20-10
80	Sr. Doe-age 2 yrs & older	30-20-10
85	Buck Goat 2 yrs & under	30-20-10

Class	MARKET GOAT	Points
90	Age 4-12 mos. Champion Reserve Champion	30-20-10

Class	RATE OF GAIN	Points
95		30-20-10

Showmanship Class 13 & Under, and 14 & Over

## Home Raised Class – Shelby Co. 4-H & FFA members only

Any animal whose dam is owned by the exhibitor or a member of the immediate family (father, mother, brother, sister, or legal guardian or grandparents only), at the time of birth, and is born on the local property that is owned or managed by the immediate family of the exhibitor is eligible. The animal must be cared for from birth to exhibition by the exhibitor on the local property. The dam does not have to be owned by the exhibitor/family at the time of breeding. Animal must have been shown in a 4-H or FFA class to be eligible for the home-raised class.

# GOAT SHOW AWARDS

## CHAMPION DAIRY BILLY GOAT

Ricketts Farm Service

## CHAMPION MEAT BILLY GOAT

Ricketts Farm Service

## GRAND CHAMPION DAIRY DOE

Larrick Farms

## RESERVE CHAMPION DAIRY DOE

Larrick Farms

## GRAND CHAMPION OTHER BREEDS DOE

Larrick Farms

## RESERVE GRAND CHAMPION OTHER BREEDS

Larrick Farms

## CHAMPION HOME RAISED BREEDING GOAT

Larrick Farms (Shelby Co. Only)

## CHAMPION MARKET GOAT

South Shelby FFA

## RESERVE CHAMPION MARKET GOAT

Ronnie Neill Family

## GOAT SHOWMANSHIP 13 and UNDER

Elsen Enterprise LLC/ Tom & Carrie Elsen

## GOAT SHOWMANSHIP 13 & UNDER RUNNER- UP

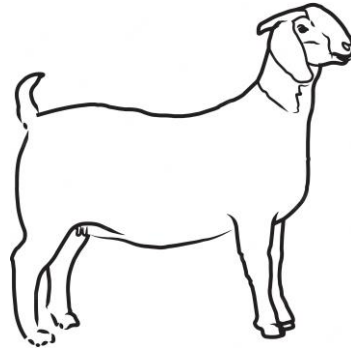
Brian Douglass, Seed Sales LLC

## GOAT SHOWMANSHIP 14 and OVER

Shelby County Health Department

## GOAT SHOWMANSHIP 14 & OVER RUNNER -UP

Brian Douglass, Seed Sales LLC





# BUCKET CALF SHOW

Monday, July 10, 2023

Calf in place 2:00 p.m.

Show starts at 4:00 p.m.

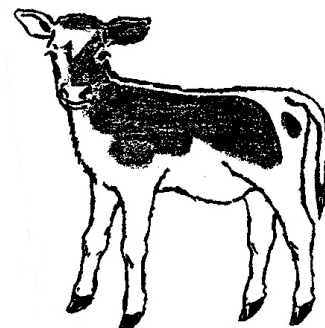
Superintendent: Mitch Schmidt

1. Exhibitor must be enrolled in project 4-H Bucket Calf project.
2. Exhibitor must be 8-12 years old as of January 1, 2023.
3. Calf must be born March 1, 2023 to June 1, 2023.
4. Calf must be owned and hand fed by project member since it was two weeks old.
5. Calf may be any breed or sex (heifer, steer or bull).
6. Calf is not eligible to be shown in other classes (beef or dairy).
7. Calf should be broke to lead and be shown by proper method according to breed (beef or dairy).
8. Classes will be broken by exhibitor's age if necessary.
9. Criteria for judging:
  - 25% Showmanship
  - 25% Condition, health and grooming of calf
  - 20% Quality of calf (structural, soundness, etc.)
  - 30% Knowledge gained (judge will talk with exhibitor)
    - a. Breed
    - b. Age
    - c. Feeding practices
    - d. Growth changes (measurements of height and chest circumferences and/or weight)
    - e. Medicines (vaccinations, worming, etc)
10. Each member is limited to no more than 1 calf.
11. Bucket Calves are to remain in place in the barn till conclusion of Beef Show.
12. Point value: Blue - 12, Red - 8, White - 4

Class - 332

Champion Bucket Calf  
Reserve Champion Bucket Calf

Trophy & Ribbon  
Ribbon



# BEEF SHOW

Monday, July 10, 2023

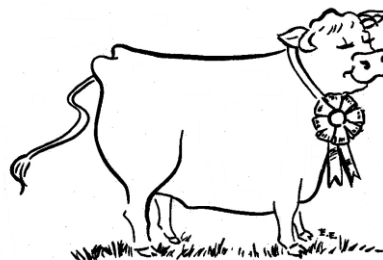
Cattle Show Starts at 4:00 p.m. Cattle in Place- 2:00

Superintendent: Mitch Schmidt

1. Steers and Market Heifer will show by weight instead of breed.
2. Steers Weigh-in is optional - must have ear tags or tattoos on February 27
3. Each exhibitor is limited to two entries per class.
4. Any questions as to age of breeding animals will be settled by registration papers.
5. Crossbred or commercial beef heifer classes are for non-pedigreed animals.
6. Each exhibitor will be responsible for his own feed, bedding, equipment, and cleaning of his pen before leaving the fairgrounds.
7. Cow & Calf class winners are not eligible to show for Champion Heifer in each breed.
8. Point value: Blue - 40, Red - 30, White - 20.
9. Breeding stock to be shown in Breeding Classes should be eligible for registration in their respective breed associations.
10. Steers and Market Heifer must be shown in at least one class to be eligible to participate in the Rate-of-Gain classes.
11. All livestock exhibitors must observe the health regulations as stated for each livestock division.
12. Same tag # and tag color must be maintained in the steer's ear through the Livestock Sale date.
13. All exhibitors must attend an exhibitor meeting 30 minutes prior to the show.

## BEEF CLASSES

Junior Bull Calf	
(calved Jan. 1 - May 1, 2023)	199
Senior Bull Calf	
(calved Sept. 1 -Dec. 31, 2022)	200
Summer Yearling Bull	
(calved May. 1 - Aug. 31, 2022)	201
Junior Yearling Bull	
(calved Jan 1 -April 30, 2022)	202
Senior Yearling Bull	
(calved Sept. 1 - Dec. 31, 2021)	203
Junior Heifer Calf	
(calved Jan. 1 - May 1, 2023)	204
Winter Heifer Calf	
(calved Nov. 1 - Dec. 31, 2022)	205
Senior Heifer Calf	
(calved Sept. 1 - Oct. 31, 2022)	206
Late Summer Yearling Heifer	
(calved July 1 - August 31, 2022)	207
Early Summer Yearling Heifer	
(calved May 1 - June 30, 2022)	208
Spring Junior Yearling Heifer	
(calved Mar. 1 - Apr. 30, 2022)	209
Junior Yearling Heifer	
(calved Jan. 1 - Feb. 28, 2022)	210
Early Senior Yearling Heifer	
(calved Sept. 1 - Dec. 31, 2021)	211
Cow & Calf	
(calf born after Jan. 1, 2023- cow in pasture condition)	212



MARKET STEER and HEIFER CLASS 278

STEER RATE-OF-GAIN

279

## Home Raised Market and Breeding Classes

Any animal whose dam is owned by the exhibitor or a member of the immediate family (father, mother, brother, sister, or legal guardian or grandparents only), at the time of birth, and is born on the local property that is owned or managed by the immediate family of the exhibitor is eligible. The animal must be cared for from birth to exhibition by the exhibitor on the local property. The dam does not have to be owned by the exhibitor/family at the time of breeding. Open to Shelby Co. 4-H or FFA member only. Animal must have been shown in a 4H or FFA class to be eligible for the home-raised class.

# BEEF SHOW AWARDS

## CHAMPION BUCKET CALF

Russell's Cattle Solutions, LLC

## CHAMPION ANGUS HEIFER

Double Dye Farms, Shelbyna, MO.

## SUPREME BULL

Richard & Tammy Ratliff

## CHAMPION HOME RAISED BREEDING CATTLE

Mayes Farms (Shelby Co. Only)

## GRAND CHAMPION STEER (OVERALL)

The Flower Shed

## RESERVE GRAND CHAMPION STEER (OVERALL)

C & R Super Market, Shelbyna, MO.

## CHAMPION HOME RAISED STEER

Larrick Farms (Shelby Co. Only)

## CHAMPION RATE-OF-GAIN STEER

Mayes Farms

## RESERVE CHAMPION HOME RAISED STEER

Carroll Family Farms (Shelby Co. Only)

## BEEF SHOWMANSHIP (13 & UNDER)

Farm Bureau Insurance, Clint Chandler

## BEEF SHOWMANSHIP (14 & OVER)

Shelby Co. Farm Bureau, In Memory of Paul Wilson

# SWINE SHOW

Swine show start at 10:30 a.m. Thursday, July 13, 2023

Hogs in place 8:30-9:30 a.m.

## “See Health Regulations”

Superintendent: Matt Beach

Assistant Superintendent: Scot Shively

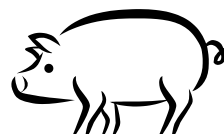
1. Entries should be in place one hour prior to the start of the show.
2. All market hogs must be farrowed after December 1, 2023.
3. Exhibitors will be limited to two-market animals per species.
4. Hogs will be broken into classes according to weight after they arrive on the grounds.
5. All swine members must be SMQA Certified to show.
6. Point Value: Blue - 30, Red - 20, White - 10.
7. No off hogs such as backscars, belly ruptures, etc.
8. They must be certified weights by the project leader, and be recorded on identification sheets. Others must have project leader, FFA Advisor or Veterinary signature on the Hog I.D. Form and be turned in by April 14.
9. All Market hogs must be ear notched to be eligible to show, ear tags are not acceptable.
10. No cryptorchid will be allowed to show or sell.
11. Only water can be sprayed on the hogs.
12. Hogs must be shown in at least one class to be eligible to participate in the Rate-Of-Gain class
13. Each exhibitor will be responsible for his own feed, bedding, equipment, & cleaning of his pen before leaving the fairgrounds. No straw in the livestock barn!!
14. Exhibitors must observe the health regulations as stated for each division.
15. All Market Hogs shown at the fair must be taken home by the exhibitors after the sale.  
Questions call Matt Beach: 573-881-0484
16. All exhibitors must attend an exhibitor meeting 30 minutes prior to the show

## MARKET CLASS

Hogs should not be brought in until 3:00 p.m. Ear notching of hogs to show and sell is required.

Need to be ear notched by litter and individual number. No Health papers are required, but only healthy hog will be allowed to show!

	Class
Market Hog	180
Rate-of-gain	181



Animal must have been shown in market hog class 180 to be eligible for the home-raised class.

## Home Raised Class

Any animal whose dam is owned by the exhibitor & grandparents or a member of the immediate family (father, mother, brother, sister, or legal guardian only), at the time of birth, and is born on the local property that is owned or managed by the immediate family of the exhibitor is eligible. The animal must be cared for from birth to exhibition by the exhibitor on the local property. The dam does not have to be owned by the exhibitor/family at the time of breeding.

- Open to Shelby Co. 4-H or FFA member only.

# SWINE SHOW AWARDS

## CHAMPION LIGHT WEIGHT MARKET HOG

Curtis Smith Family

## CHAMPION MEDIUM WEIGHT MARKET HOG

LG Seed/Scot Shively

## CHAMPION HEAVY WEIGHT MARKET HOG

Rob Christine Family

## GRAND CHAMPION MARKET HOG

Mrs. R.N. Perry in Memory of R.N. Perry

## RESERVE GRAND CHAMPION MARKET HOG

FCS Financial

## SWINE NOVICE SHOWMANSHIP (8-10)

Harold Beach Family

## SWINE NOVICE SHOWMANSHIP RUNNER-UP (8-10)

Rutter Farms

## SWINE SHOWMANSHIP (11-13)

Sellenriek

## SWINE SHOWMANSHIP RUNNER-UP (11-13)

Chinn Hog Farms

## SWINE SHOWMANSHIP (14 & OVER):

Passion For Pig - Veterinary Services, LLC

## SWINE SHOWMANSHIP RUNNER-UP (14 & OVER)

Darrell Vanskike Family

## CHAMPION HOME RAISED MARKET HOG

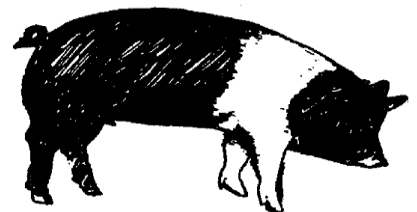
Rutter Farms (Shelby Co. Only)

## RESERVE CHAMPION HOME RAISED MARKET HOG

Matt Beach (Shelby Co. Only)

## SWINE RATE OF GAIN

Blaise Hog Farm



# RABBIT SHOW

Monday, July 10, 2023

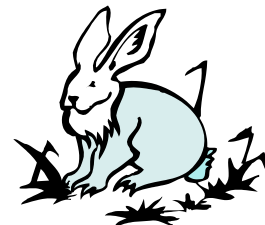
Rabbits in place by 9:00 a.m.

Rabbit show immediately following Poultry show

In the Livestock Barn

Superintendent: Barbie Parrish

1. Each exhibitor is limited to two entries per class.
2. Entries in place ½ hour before judging time.
3. Exhibitors needs to have ownership of animal by June 1, 2023
4. Rabbits must not have any ear mites, mange, or crusty eyes.



POINT VALUE: Blue - 6, Red - 4, White 2.

## Rabbit Classes:

	Fancy Breeds	Commercial/Meat Breeds
Senior Buck	151	161
Senior Doe	152	162
Intermediate Buck (6-8 month old)	NA	163
Intermediate Doe (6-8 month old)	NA	164
Junior Buck (animals under 6 months of age)	155	165
Junior Doe (animals under 6 months of age)	156	166

#186 Meat Pen of 3 Fryers (Pen of 3-69 days and under should not weigh over 5 pounds each)

\*Grand Champion – Meat Pen - Red Barn Veterinary

\*Reserve Champion – Meat Pen – Red Barn Veterinary

Only entries in class # 186 are eligible to sell in Thursdays Market Livestock Sale.

Jr. Showmanship Class - 8-12 yr

\* Champion (includes interview with judge)

Sr. Showmanship Class – 13 & over

\* Champion (includes interview judge)

\* Grand Champion Rabbit

\* Reserve Champion Rabbit

# POULTRY SHOW

Monday, July 10, 2023

Poultry in place at 8:00 a.m. Poultry Show – 8:30 a.m.

Show in is the Livestock Barn

“See Health Regulations”

Superintendent: Barbie Parish

1. Each exhibitor is limited to two entries per class.
2. Entries in place ½ hour before judging time.
3. Exhibitor needs to have ownership of animal by June 1, 2023. This pertains to Breeding Classes also.

POINT VALUE: Blue - 6, Red - 4, White - 2

## Poultry Classes:

### Large Fowl:

- 140 Old Pen (1 cock and 2 hens)
- 141 Young Pen (1 cockerel and 2 pullets)
- 142 Cock (male bird more than 1 year old)
- 143 Cockerel (male bird less than 1 year old)
- 144 Hen (female more than 1 year old)
- 145 Pullet (female less than 1 year old)

### Bantams:

- 240 Old Pen (1 cock and 2 hens)
- 241 Young Pen (1 cockerel and 2 pullets)
- 242 Cock (male bird more than 1 year old)
- 243 Cockerel (male bird less than 1 year old)
- 244 Hen (Female more than 1 year old)
- 245 Pullet (Female less than 1 year old)

### Turkeys:

- 440 Pen (1 male & 2 Females)
- 442 Tom
- 444 Hen

### Ducks and/or Geese:

- 342 One male
- 344 One female
- 340 One male and two females (Pen)

456 Pen of 3 Fryers (Meat type Poultry Only) under 49 days old & minimum of 3 lbs.

Grand Champion                      Meat Pen of 3  
Reserve Champion                   Meat Pen of 3

Grand Champion Bird  
Reserve Champion Bird

Jr. Showmanship Class - 8-13 yr.  
\* Champion (includes interview with judge)

Sr. Showmanship Class – 14 & over  
\* Champion (includes interview judge)



**CAT SHOW**  
**Wednesday July 12 at 3:30 p.m**  
Show is in the Covered Seating Area

"See Health Regulations"

Superintendent: Kaytlyn Mefford .....

POINT VALUE: Blue - 6, Red - 4, White – 2

1. Entries are limited to Shelby County Cat Care Project members only.
2. Project members must care for the cat, which is owned by the member or family.
3. All members must be in good standing with their club and project leader to show.
4. Cats in place, half an hour before the show.
5. It is recommended that all cats be vaccinated for distemper, feline Leukemia and be wormed.
6. All entries will be restrained in a pet carrier of some type and remain confined unless being groomed or judged.  
Leashes or harnesses are highly recommended.
7. No entry shall be left unattended and will be released immediately after the show.
8. All judges' decisions are final!
9. Each exhibitor is limited to two entries per class.
10. Cats must have no ring worms, no respiratory diseases, no matted eyes and free of parasites.
11. Cats must have Health papers.

**CLASSES:**

**79 - ADULT**

1. 10 months or older.
2. Have knowledge of cat care.
3. Grooming.
4. Overall health.

**80 - KITTEN**

1. 2 months through 9 months.
2. Have knowledge of cat care.
3. Grooming.
4. Overall health.

**81 - COSTUME**

1. Either Adult or Kitten.
2. Originality
3. Theme
4. Creativity



**\*OVERALL SHOWMANSHIP AWARD** (Champion)

**\*TOP CAT OVER ALL** (Grand Champion & Reserve Grand Champion)





# CLOVER KID SMALL ANIMAL SHOW



Wednesday July 12 following the Cat Show

Show is in the Covered Seating Area

Superintendent: Houston Bichsel

Clover Kids are encouraged to experience a wide range of activities. Learning about and enjoying small animals is one of the many opportunities children can have in our Shelby County Clover Kids project. We will be having a small animal show especially designed with Clover Kids ages 5-7 in mind. Below is a list of approved small animals and policies to help ensure that children and volunteers have safe and meaningful experiences with these animals.

Amphibians: Frogs, toads

Birds

Cavies: Guinea pigs, gerbils, hamsters

Cats

Chinchillas

Dogs

Fish

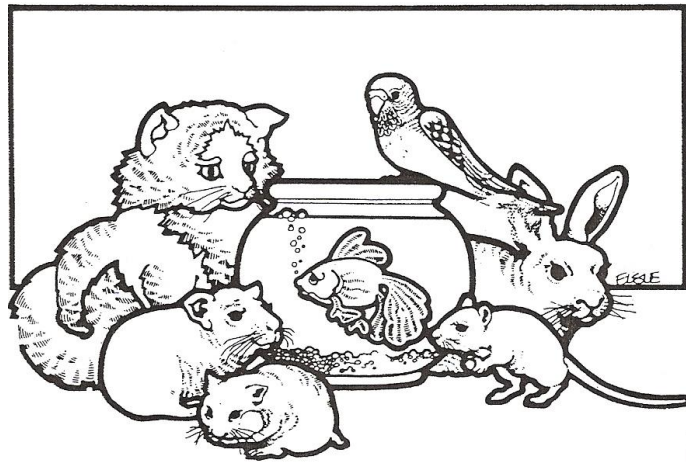
Hedgehogs

Lizards

Rabbits

Mice

Snakes



Small animal safety policies:

- ♣ No wildlife allowed—follows Department of Conservation rules as specified in the Wildlife Code of Missouri.
- ♣ All animals must be caged, leashed, and/or contained as appropriate and manageable by the child during Clover Kids meetings and events.
- ♣ Parent or guardian must be present with his or her child(ren) when animals are involved.

# OBEDIENCE 4-H & FFA DOG SHOW

Saturday, July 13, 2023 -- 9:00 a.m.

Superintendent: Jessie DeVore and Elaine Allred

1. Entries are limited to Shelby and Macon County Dog Project members.
2. Project members must have met as a county unit and with the approval of the appointed county instructor.
3. All dogs must be trained by exhibitor and have possession by April 1.
4. All dogs must have proof of good health, immunizations and worming.
5. Female dogs in season must be shown at the end of the obedience classes and kept away from the show ring and other dog and must be properly bathed and deodorized with an anti-mating spray.
6. Proper equipment consists of obedience six-foot lead, approved choke collar, and showmanship lead.
7. Dogs with AKC titles must compete in advanced classes.
8. One obedience class per dog. One showmanship class per person.
9. Exhibitor will show and advance in show order.
10. POINT VALUE: Blue - 24, Red - 16, White - 8



## OBEDIENCE CLASSES

- 340 Beginner-Novice: (First-Year Dog) May compete 1 year only:  
Heel on leash, 40 points; Figure "8", 40 points; Sit for examination, 40 points; Sit Stay, 40 points; Recall, 40 points. Maximum total score: 200 points.
- 341 Novice: (Second-Year Dog) May compete 2 years max:  
Heel on leash and figure "8", 40 points; Standing for examination, 30 points; Heel free, 40 points; Recall, 30 points; Sit stay - get your leash, 30 points; Group Exercise - Sit & Down Stay, 30 points. Maximum total score: 200 points.
- 342 Graduate Novice - May compete 3 years max:  
Heel free and figure "8", 40 points; Drop on recall, 40 points; Dumbbell recall, 30 points; Dumbbell Recall over high jump, 30 points; Recall over broad jump, 30 points; Stay - Get your leash (sit, down), 30 points; Maximum total score, 200 points.
- 343 Open - May compete unlimited years:  
Heel free and figure "8", 40 points; Command Discrimination (stand, down, sit) 30 points; Drop on recall, 30 points; Retrieve on flat, 20 points; Retrieve over high jump, 30 points; Broad jump, 20 points; Stay - Get Your Leash (sit, down), 30 points. Maximum total score: 200 points.

## SHOWMANSHIP CLASSES

- 345 Novice-(1<sup>st</sup> Year Showmanship)-Those exhibitors who have not exhibited in Showmanship Classes previously.
- 346 Novice- (2<sup>nd</sup> Year Showmanship)-Those exhibitors who are in their 2<sup>nd</sup> year of exhibiting in Showmanship Classes.
- 347 Open Showmanship- Those members who have exhibiting in showmanship classes for 3 or More years.

## GROOMING CLASSES

- 348 Long Hair- Those dogs that the exhibitor believes would be considered as a longhaired breed. (example-collie)
- 349 Short Hair-Those dogs that the exhibitor believes would be considered as a shorthaired breed. (example-beagle)

\*\*\*ALL MISSOURI STATE FAIR RULES APPLY\*\*\*