

UNIVERSITY OF MISSOURI EXTENSION

Scott County 2024

Annual Report

6458 MO-77
Benton, MO 63736
573-545-3516

**SERVE
MISSOURI.**

**DELIVER
MIZZOU.**



Extension
University of Missouri

an equal opportunity/ADA institution



December 2024

Dear county commissioners, elected leaders and friends of MU Extension and Engagement,

As we reflect on the past year, I want to express my deep gratitude for your support of MU Extension and for your partnership in enhancing the lives of Missourians.

Your support for MU Extension fuels Missouri's agriculture, strengthens families, prepares our youth and promotes the health, well-being and vitality of our communities. Over the past year, our programs have focused on addressing key needs throughout the state:

- **Expanding access to 4-H:** To make 4-H more accessible, we've introduced more in-school and after-school clubs, reducing barriers and creating opportunities for young Missourians to develop essential skills and leadership abilities.
- **Supporting agriculture and land stewardship:** We're addressing critical issues such as succession planning for family farms, rural mental health, agricultural business management and land stewardship. These initiatives are helping Missouri's farmers plan for the future and preserve the health of our land for future generations.
- **Advancing health initiatives:** Our team of community health field specialists, covering every region of the state, works directly with local leaders to assess health needs and bring UM System resources and expertise to these communities, supporting healthier lives and stronger communities.
- **Promoting economic development:** MU Extension is helping to create economic opportunities by working with individuals, supporting businesses in their growth and collaborating with communities to enhance local vibrancy. Through these efforts, we help bring new jobs, skills and possibilities to Missourians across the state.
- **Providing essential training:** Our continuing education programs prepare Missouri's firefighters and health care workers to meet the demands of their roles with the latest skills and knowledge, ensuring they are well-prepared to serve our communities.

As you read through this annual report, I hope you feel as proud as I do of the accomplishments we've achieved together. The dedication and professionalism of MU Extension's faculty and staff are inspiring, and I am grateful to work alongside them—and each of you—as we make Missouri a stronger, healthier and more vibrant place. Thank you for your continued support and partnership. Together, we are serving Missouri by delivering the University *for* Missouri.

Warm regards,

Chad Higgins, PhD
Vice Chancellor, MU Extension and Engagement
Chief Engagement Officer, UM System

Budget and more

Appropriations budget

Income

County Appropriations	46,728.00
Reserves	3,985.12
Total Income	50,713.12

Expenses

Salaries/Benefits	28344.88
Travel	2,892.00
Telephone	517.80
Rent/Office Space	14,400.00
Office Supplies/Service	1,658.44
Utilities	1740.00
Insurance	700.00
Shared Cleaning Expense	480.00
Total Expenses	50,713.12

Return on investment

University System Investments	
Staff	361,552.00
IT Equipment	10,000.00
Internet Service	1,200.00
30% of Travel	1,477.00
Total	374,229.00

For every dollar invested by the county, MU invests \$8.00.

MU Extension is a unique partnership.

Extension funding is a three-way partnership of federal, state and county government. Federal and state money, through the University of Missouri system, pay professional staff salaries, training costs, computers and communication equipment. County funds support the local office, secretarial and youth assistant salaries, staff mileage and council expenses.



Local Support

Did you know you can donate directly to *(name of county)* County Extension with a gift to be used immediately or as an endowment contribution for long term efforts. Monies put into the endowment are left forever to earn interest with the county office benefiting each year. You can also direct your donation to a specific program such as 4-H or Master Gardeners.

Faculty and Staff

Sarah Denkler – Regional Director

Amber Childers – Extension Engagement Specialist

Maude Harris – Field Specialist in Nutrition & Health

Susan Norship-Haney – Field Specialist in Community Health

Randall Stephens – Field Specialist in Ag Business

Jennifer Hall – 4-H Youth Development Educator

Scotty Smothers – Field Specialist in Agronomy

Richard Rickman – Field Specialist in Workforce Development

Audrey Johnson – Field Specialist in Human Development

Kristal Smith – Field Specialist in 4-H Youth Development

Teresa Green - Nutrition Program Associate

Taylor Clark– Field Specialist in Community Development

Thomalee McCoy – Office Support Staff

Extension Council Members and County Commissioners

Officers*

Chairman - Joe Pattongill

Vice Chair – Barry Blevins

Treasure – Steven Minner

Secretary – Robyn Sitzes

Members*

Issac Engram

Camille Lancaster

Danny Tetley

Joey Hayes

Kevin Fennewald

Lisa Hicks

David Avery

Scott County Commissioners

Danny Tetley –Presiding Commissioner

Donnie Keifer 2nd District Commissioner

Terry Cole 1st District Commissioner



Extension
University of Missouri

The Scott County Extension Council, Faculty and staff would like to express our appreciation to the Scott county commissioners for their continued support of Extension Programs.

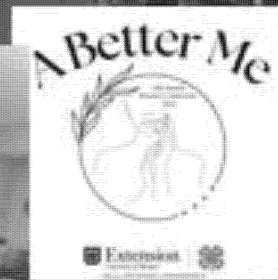


Scott County

Business and Community

Local Impact

- ❖ Neighborhood Leadership Academy (Facilitator)
- ❖ Connecting Entrepreneurial Communities Conference (State Team Member)
- ❖ Propel Program w/ Sikeston Regional Chamber
- ❖ Women's Conference
- ❖ Missouri Drug Coalition
- ❖ Missouri Telehealth Network: Building Healthy Communities (Hub Team Member)
- ❖ Senior Planet: Chrome Essentials/Smart Phones (Facilitator)
- ❖ Missouri Eats Southeast Region (Team Member)
- ❖ Non-Profit Technical Assistance (Team Member)
- ❖ The Missouri Crunch Off
- ❖ MBRC Low Birth Weight Conference



Scott County Ag .

Agriculture and Environment

Local Impact

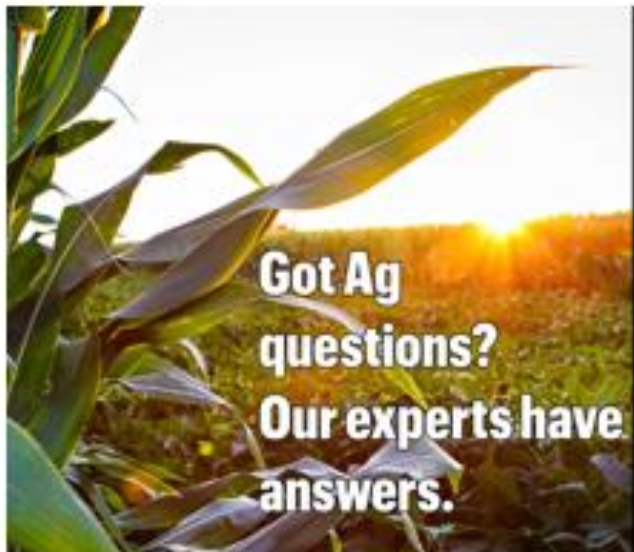


Randy Stephens is the new **Ag. Business Field Specialist in Southeast Missouri.**

Officed in Scott County Randy is responsible for working with producers over a nine-county area of Southeast Missouri. In Randy's short time with the university extension, he has worked with Agronomy Field Specialist Scotty Smothers hosting 2 PATT training classes for producers to renew their pesticide licenses. A Total of 39 Scott, Stoddard, and Cape Girardeau County producers attended. Randy has reviewed multiple soil tests for producers and is working with Ben Brown on campus for the Southeast Missouri Crop Conference in January 2025 at the Miner Convention Center.



Extension
University of Missouri



Scotty Smothers – Field Specialist in Agronomy

Agriculture and Environment

Local Impact and Stories

IPM

One of the most important impacts for 2024 was addressing issues that Ag producers face through Integrated Pest Management (IPM) programs. A pest is defined as anything that diminishes the value of ag resources or interferes with the production and utilization of crop and livestock used for food and fiber.

PPAT: University of Missouri Extension is tasked with certifying private applicators through trainings, either at event venues or in person office visits. In 2024 there were 4 programs offered for growers to receive initial certification or renew their existing certification. All 4 programs were offered through event meetings. In total, there were 43 participants that received or renewed their private applicator licenses.

Personal Contacts: IPM focuses on identifying and addressing pest throughout the growing season. This calls for email correspondence, farm visits, office visits or phone calls. I had correspondence with several Scott County producers throughout the growing season.

Other Highlights

Soil Analysis: Late in the year I requested that Soil Samples be analyzed through MU Soil testing lab, unless the customer requested otherwise. I have greater access to the MU lab results which makes it easier if a customer wants to modify a soil result to achieve a different outcome than what was originally stated. After switching labs 13 samples were analyzed.

Media: Interviewed with KTMO at the FDREEC annual field day. (10,000 audience)

Contributed to Delta Newsletter (420 membership)

2024 Program Highlight

One program that had the largest impact over this past year is the option of in-person PPAT training. While the video serves the basic purpose to certify and recertify Private Applicators, beginning in 2025, that option will not be allowed. The process to obtain a Private Applicators license in 2025 will be much more difficult and there were improvements made by Scott County personal and myself to ensure that anyone who needed a license was given the opportunity to obtain one.

County

Local Impact and Stories

Jason Morris

Agriculture Business and Policy

Annie's Project

A new program was delivered in the Southeast Region which involved women in agriculture. More than nine On My Own programs were scheduled throughout the 18 county Southeast Region.

Grazing School

In conjunction with other Extension disciplines and outside stake holders, Agriculture Business and policy was involved in numerous Grazing School programs offered in varying counties.

Ag Lenders Seminar

The Ag Lenders Seminar is a multi county programming effort to educate those who work in the field of agriculture finance and those who desire knowledge. This program consists of marketing outlooks, weather forecasts as well as past and current trends related to farming.

Soil and Water Boards

Through state law, Extension serves on each county Soil and Water Board. Through this service Ag Business is heavily involved in farm and field days as well as conferences.

Farm Lease Classes

Many questions related to farm leases from producers and landlords are addressed yearly by MU Extension agricultural business specialists. As a relatively new program, several throughout Southeast Missouri participated in this program on-line and in-person. The two primary topics covered were items in a lease and terminating a farm lease. Estimates have 33 percent of farm leases in Missouri are still oral and oral lease termination is complicated and somewhat unique to the state. This program continues to draw participants, and elderly landowners appreciate the in-person option greatly.

Farm Tax Workshops

MU Extension hosted and taught Farm Tax Workshops for farm businesses and farm and ranch families. The content included Corporate Transparency Act, TCJA, estate & gift tax sunset, conservation tax issues, managing high/low-income years, Section 179 and depreciation, sales &

exchanges and retirement and social security planning.

The online participants planned to take some action before the end of the year. The planned actions included: reviewing farm records (70%), meeting with tax preparer before the end of the year (67%), communicate with family members (50%) and fifty percent plan to review resources before purchasing begins in 2025.

Other Highlights

Regional 4-H Ranch Sorting and Team Penning clinics and summer long participation.

Beef Producers

One of the greatest impacts for 2024 was addressing issues and needs which faced Southeast Missouri beef producers. Extension and Ag Business hosted several meetings throughout the year to educate producers regarding weather conditions, marketing options, financial directives and more.

MU Extension was involved in or participated in no less than eight cattle related meetings.

2024 Program Highlight

Bee Producers at risk: For the second year in a row, I invited Dr. Tim Evans, Assoc. Prof. & State Ext. Specialist, Veterinary Medicine from MU, to help find solutions facing local beef producers. In addition, Dr. Evans presented at two cattlemen's association meetings. This year, we transversed five counties and met with numerous producers. We have secured future endeavors to host farm and field days. Originating from a one county visit, this small project has grown into a program encompassing many counties.

Some of the questions and comments were:

"How can I get Dr. Evans to my farm?"
"Will and can he come back next year?"
"Why have we not done this before?"





MU EXTENSION **Serves MISSOURI and Delivers MIZZOU**

through credible statewide programs

Business and Community

Estate Planning: What's the Worst That Can Happen???

Jennifer R. Williams, JD
University of Missouri Extension



**SERVE MISSOURI.
DELIVER MIZZOU.**



This class uses the fictional family pictured above to demonstrate the consequences of not having an estate plan.

Jennifer R. Williams taught three estate planning classes in Scott County to **31 adults**, educating them on the importance of completing an estate plan.

“I was unaware of beneficiary deeds in Missouri and will certainly execute such when I update other documents.”

“‘What’s the worst thing that could happen’ is way worse than I ever imagined!”



Economic
Opportunity

Maude Harris, EdD

Field Specialist in Nutrition and Health

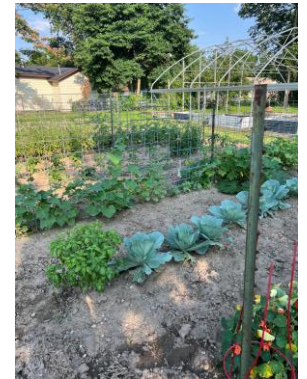
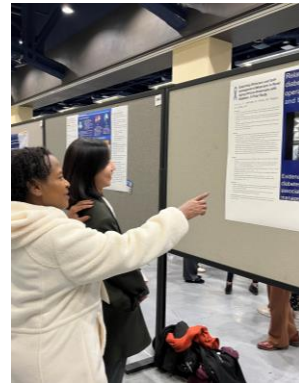
Nutrition and Health Activities



- **Diabetes Research (Scott, Mississippi, New Madrid, Pemiscot, Dunklin, and Stoddard Counties)** Face to face interviews with type 2 African American Diabetic participants studying self-management and stress. Poster session at Gerontology Society Scientific Meeting.
- **Stay Strong, Stay Healthy** structured exercise program for older adults that includes a variety of exercises to help build muscle and increase bone density. Classes are held twice per week for 8 weeks.
- **Crunch Off:** The Missouri Crunch Off is a statewide event to celebrate Farm to School Month by crunching any Missouri grown food anytime between October 1 through October 31.
- **Virtual Diabetes Self-Management Program:** interactive group workshop delivered via Zoom and is taught each week for six weeks.
- **Women's Conference:** The 19th Annual Multicounty Women's Health Estimate approximately 120 participants and approximately 28 exhibitors with at least two representatives at each table.
- **Food Preservation workshop:** Hands on workshop teaching basics of home food preservation based on current USDA canning guidelines.
- **Matter of Balance:** Reviews information to help reduce the fear of falling and increase activity levels among older adults. 8 two-hour sessions.
- **Community Garden in Sikeston:** Produce used for food preservation workshops, fresh vegetables donated to residents, and gardening education.
- **Tai Chi for overall Health and Fall Prevention:** 16 sessions

Ongoing Efforts in Scott County and Surrounding Area:

USDA Garden Grant Distribution, Health Fairs, County Fairs, Local Producer Product Distribution Events, Annual Women's Conference, ECHO Outreach and Education Group, Eat Smart in Parks Initiatives, High Obesity Grant Team Initiatives, MU Extension Resilience Team Initiatives Actively participating in council meetings, planning meetings, boards, coalitions, committees and community events. Currently serving: Scott County Transit Board, Bootheel Behavioral Health, Health in the Heartland, SEMO Health Educators Coalition, and the Retired Senior Volunteer Board



Community Garden.



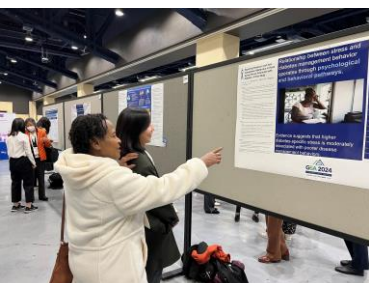
Food Preservation classes: Water Bath Canning and Steam Canning



Annual October Crunch Off Event to promote local foods



Senior Planet Computer Training



Poster Session Gerontological Society of America (GSA) 2024 Annual Scientific Meeting

UM System County Impacts

COMMUNITY HEALTH ENGAGEMENT AND
OUTREACH

Susan Haney

Field Specialist in Community Health

Scott County 2024



Engagement Work and Accomplishments:

The Southeast Regional Needs Assessment and the VOICES Survey have been completed, identifying the following key priority areas: **Chronic Disease: Focus on Heart Disease; Infectious or Emerging Diseases: Focus on Sexually Transmitted Infections; Cancer: Focus on Lung Cancer.**

- **Key Takeaways for Scott County:** Of the six county regions, New Madrid County has the 2nd highest life expectancy for the Bootheel at 74.4 years and is the most urban county in the Bootheel.
- Scott County has the lowest smoking rate, with 24% of adults who are smoking in the 6-county region.
- Scott County exceeds the state high school graduation rate for grades 9-12 at 94.6%.
- Scott County has the 3rd lowest rate of death from heart disease in the 6-county area but still exceeds the state and US rate for heart disease mortality.
- Scott County has had increasing rates of incidences of Chlamydia from 2011-2021. HIV rates for Scott County are lower than the state rate. Syphilis incidences have also increased from 2016-2018 but are still lower than the state rate.

Strategic Plan for
Southeast Region
Summer 2024



➤ 19th Annual Women's Conference

I hosted the Brain and Disease of Addiction in November at the Women's Conference to participants, as well as assisted with the conference.

➤ SEMO Health Educators:

I have participated in the SEMO Health Educators Coalition throughout the year and presented on the Missouri TeleHealth Network and the Project Echo.



Women's Conference



Key Outcomes and Actions Taken:

- Poster Presentation at the National Health Outreach Conference in South Carolina in May with my 3 CHEO partners on Exploring Innovative Extension Based Approaches for Community Health Equity.
- I attended key events like the Missouri PQC: Community Forum on Maternal Rural Health and participated in the Suicide Prevention Conference and the first Connected Communities-Thriving Families (CC-TF) Southeast Missouri regional meeting.
- I attended the Rural Health Research Summit in Columbia, engaging in conversations about improving services in rural areas and overcoming related barriers.
- I also attended Extension and Engagement Week and obtained much-needed Professional Development and CHEO Strategic Planning Sessions to assist me in serving Scott County.
- I've begun offering the Brain and the Disease of Addiction and the Layperson Naloxone Administration Presentations. I have also conducted two virtual sessions of We Can Prosper Resilience Training. Most recently, I was trained in COMET Training (Changing Our Mental & Emotional Trajectory).



NHOC Poster
Presentation



CHEO Strategic Planning

SNAP Education

The Supplemental Nutrition Assistance Program Education (SNAP-Education or SNAP-Ed) brought \$11,145,237 in federal funds to Missouri. The funds support engagement with 74,864 Supplemental Nutrition Assistance Program (SNAP) recipients and eligible citizens of Missouri who learned about being active and healthy eating on a budget. This year we had 1,164,143 indirect educational contacts through newsletters, health fairs, food pantries, and the Show Me Nutrition helpline.

1,479 direct and 2,245 indirect contacts were made in Scott County.

Participants in SNAP-Ed learn the importance of making healthier meals and snack choices, eating breakfast more often, are more willing to try new foods, increase their physical activity, and make healthier food choices. Those who practice healthy eating and are physically active are more likely to contribute to a healthy labor force and enjoy a high quality of life throughout the lifespan.

This vital programming effort also reduces healthcare costs over the participant's lifetime, saving taxpayer money in reduced public healthcare benefits and insurance premiums.

NPA Teresa Green at Fisher Delta
Center Field Day

Success Story

At Wing Elementary I taught the 4th grade class about yogurt. Most of the kids wanted to know what flavor the yogurt was, and we had vanilla to try. I told them I bought it at the grocery store and any brand or flavor of yogurt had calcium which is good for their teeth and bones. The very next day I had a student tell me that he makes the yogurt dip recipe on the newsletters that I send home to the family. This shows the newsletters are making a difference.



Jennifer Hall, 4-H Youth Development Educator Missouri 4-H

Local Impact and Stories

In 2024, 4-H in Scott County:

- Developed a strong relationship with Lincoln University.
- Held Camp Blast Activities for Lincoln University 4-H Students.
- Held Yoga activities for Scott County 4-H Youth
- Began developing relationships with other area businesses and entities to support Missouri 4-H in Scott County.



Camp BLAST! was held in June in cooperation with Lincoln University Sikeston Campus. Campers were eager to complete STEM projects while learning about pre-historic science theory, chemistry, space exploration and environmental sciences. We incorporated lessons on character building, safety, and physical activity.





MU EXTENSION **Serves MISSOURI and Delivers MIZZOU** through credible statewide programs **Health and Human Sciences**

Annual Report



Audrey Johnson
Human Development
Specialist

Mississippi, Scott, New Madrid,
Dunklin, Pemiscot, Stoddard, Cape,
Perry, Bollinger counties

Keep Your Keys

People 55 and older are driving longer. **Keep Your Keys** is a driver-safety program to help seniors stay on the road for as long and as safely a possible. One KYK program was taught in each county: New Madrid(7 participants), Scott(7 participants), and Mississippi(20 participants). A total of 34 seniors attended between the three counties. 57.1% percent of participants in New Madrid county reported if something unexpectedly happened, and they were unable to drive whether for a short period or long period, they would be prepared to approach driving retirement. Mississippi county participants reported 46.2% and Scott county participants reported 83.3%.



KEEP YOUR KEYS!

Mental Health First Aid

The Youth Mental Health First Aid program is an interactive session that teaches individuals how to identify the warning signs of mental health problems. MHFA gives adults who work with youth and adults the skills they need to reach out and provide initial support to someone who may be developing a mental health or substance use problem and help connect them to the appropriate care.



Stoddard County(13 participants) - **Mental Health First Aid for Adults Blended/In Person**

- 38.5% reported this course has better prepared me for the work that I do professionally

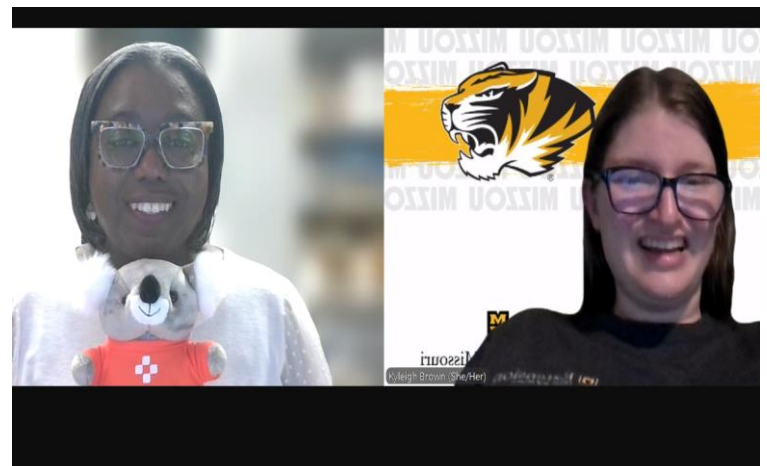
Blended Adult Mental Health First Aid(9 participants) - training to participants via zoom

- 30.8% reported the course has better prepared me for the work that I do professionally

Bollinger County(25 participants) - **Youth Mental Health First Aid**

38.5% of participants reported the course has better prepared the for the work they do professionally

Cape County(14 participants) - **Youth Mental Health First Aid**



University Of Missouri Extension Tax School

- Extension Tax Schools

- University of Missouri Extension ag economics department and ag business specialists worked together to coordinate one summer and three fall tax schools. The summer school was in person and live online. Fall schools were in Columbia and Springfield and one online school. The schools were designed for those who prepare taxes including enrolled agents, tax preparers, CPAs, individuals, and attorneys.

- The training included updates on legislation, rulings and cases, individual taxpayer issues, agricultural and natural resources topics, ethics, trusts and estates, agriculture and natural resource tax issues, business tax issues, business entity tax issues, IRS issues, related party issues, real estate rental activity issues, limited liability company issues, and international tax issues. The schools were approved for 8 and 16 hours of continuing education credit by the IRS, Missouri Bar and for CFP continuing education. Total continuing education hours reported to IRS for the schools was 3,776 hours.

- The teaching teams included CPAs, a former IRS stakeholder liaison, an IRS certified retired ag economics professor, an attorney, a certified financial planner, Missouri Department of Revenue and extension ag business specialists.

- The evaluations had many positive comments and helpful suggestions. Planning is underway to offer trainings in 2025. Local county residents benefit when local tax preparers have the opportunity to gain knowledge, which benefits their clients and communities. The tax schools are a program of the ag business and policy program of MU Extension, coordinated by Mary Sobba with help from a team of ag business specialists throughout the state.

- The resources for the schools included the IRS, the National Income Tax Workbook from the Land Grant University Tax Education Foundation, and materials written by the instructors.

- The 2024 school attendance totaled three hundred fifty people. The participants were from throughout Missouri.

**SERVE MISSOURI.
DELIVER MIZZOU.**



Eric Johnson

Field Specialist in Nutrition and Health



Board Membership

Bootheel Behavioral Health
Health in the Heartland:
SEMO Health Educators Coalition

Nutrition and Health Activities

Stay Strong, Stay Healthy structured exercise program for older adults that includes a variety of exercises to help build muscle and increase bone density. Classes are held twice per week for 8 weeks.

Crunch Off: The Missouri Crunch Off is a statewide event to celebrate Farm to School Month by crunching any Missouri grown food anytime between October 1 through October 31.

Women's Conference: The 19th Annual Multicounty Women's Health Estimate approximately 120 participants and approximately 28 exhibitors with at least two representatives at each table.

Food Preservation workshop: Hands on workshop teaching basics of home food preservation based on current USDA canning guidelines.

Cell Tech-101-Workshop teaching basic cell phone usages for aging adults on how to navigate apps and features.



Food Preservation classes: Water Bath Canning and Steam Canning



Annual October Crunch Off Event to promote local foods



Stay Strong Stay Healthy



Senior Planet Computer-Cell Tech

County Highlights

Day, Aug. 14 at the Missouri State Fair. The Smith family was selected as the Missouri County Farm Family by University of Missouri Extension and the local Farm Bureau. Each year, the fair sets aside a day to recognize farm families from across the state that are active in their communities, involved in agriculture, and/or participate in local outreach and extension programs such as 4-H or FFA. The Smith family operates a 3500-acre farm raising Black angus bulls. The Smith girls are involved in 4-H showing swine.



CHALLENGE 4: Agricultural Growth & Stewardship: *Soils Testing*

Recent public initiatives and USDA programs are putting a focus on producers to improve the health of their soil. The USDA-NRCS defines soil health as the continued capacity of the soil to function as a vital, living ecosystem that sustains plants, animals and humans. A variety of practices can improve soil health, including regular monitoring, sampling and testing protocols. The MU Soil and Plant Testing Laboratory provides testing and unbiased, research-based recommendations for economically viable and environmentally safe nutrient management practices across Missouri.

Report Area	Agriculture	Home and Garden	Community Areas	Research	Total
Scott	2	1	0	0	3
Missouri	13,742	4,773	421	6,406	25,342

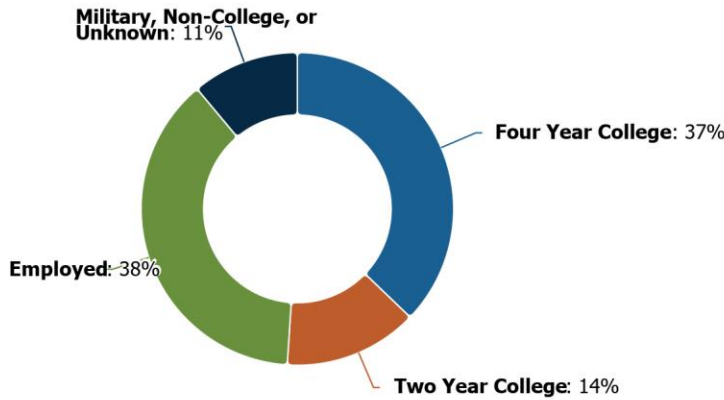
Data Source: [University of Missouri Extension Soil and Plant Testing Laboratory Annual Summary, 2022.](#)



CHALLENGE 2: Educational Access and Excellence: *College and Career Readiness*

Post High School Report

The 12-month post-graduation activity of recent high school graduates can inform communities about postsecondary education, career readiness, and characteristics of the future workforce. In 2022, of 433 graduates surveyed in the report area, 161 went to a four-year college, 60 to a two-year college, 164 directly entered the job market. The remaining 48 are reported as in the military, not in college, or unknown.



Data Source: [Missouri Department of Elementary & Secondary Education](#). 2022.



CHALLENGE 3: Healthy Futures: *Access to Care*

Mental Health Care Providers

Mental health is a critical public health issue worldwide. Access to mental health services is a challenge across Missouri, which ranks 46 out of 51 states in provider access. In the report area there are approximately 45 credentialed professionals providing mental health care to serve the area's 38,059 residents. The patient-provider ratio in the report area is 846 to 1, which means there is 1 provider for every 846 persons. The ratio of persons to providers in the report area is higher than the state average of 347:1, which means there are fewer providers per person in this area.

Ratio (Population to Providers)

846:1

Scott

Missouri

347:1

Primary Care Providers

Older adults make up a historically large percentage of the U.S. population and meeting the healthcare needs of an aging population can be challenging. In the report area, there are approximately 19 primary care physicians (MDs and DOs) to serve the area's 7,096 residents over the age of 65. The patient-provider ratio in the report area is 373:1, which means there is 1 provider for every 373 older adults. The ratio of adults to providers in the report area is higher than the state average of 250:1, which means there are fewer providers per person in this area.

Rate per 100,000 Seniors

267.80

Scott

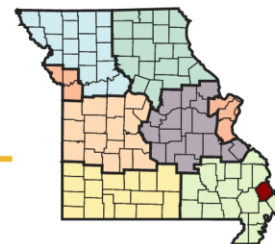
Missouri

399.40

Data Source: Centers for Medicare and Medicaid Services, [CMS - National Plan and Provider Enumeration System \(NPPES\)](#). November 2024.

Data Source: US Department of Health & Human Services, Health Resources and Services Administration, [HRSA - Area Health Resource File](#). 2021.

Missouri Grand Challenges: Local Solutions



SCOTT COUNTY

Knowing Missouri's Needs

MU Extension asked Missourians to share the greatest challenges they and their communities face.

We heard that feedback and made big changes in the way we work with council and local partners to improve lives. Locally, a network of county engagement and subject matter specialists now share MU's knowledge, research and engagement, targeting programs, information and assistance in:

- agriculture and environment
- youth and family
- business and community
- health and safety

For each grand challenge, MU Extension and Engagement targets a specific gain by 2023:



Economic opportunity

Increase MU Extension and Engagement's economic impact to the State of Missouri from \$1 billion to \$1.5 billion overall, and from \$88 billion to \$100 billion in agriculture, the top economic sector



Educational access and excellence

Increase participation in postsecondary education from 66% to 70%



Health and well-being

Improve Missouri's health ranking from 40th to 35th in the nation

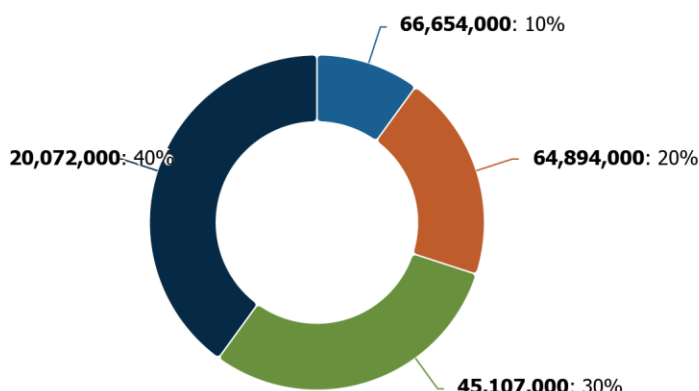
Knowing Local Challenges



CHALLENGE 1: Economic Opportunity: *Agricultural Economics*

Leading Agricultural Products

Total Rank (Sales): \$10



Data Source: US Department of Agriculture, National Agricultural Statistics Service, [Census of Agriculture](#). 2022.

Net Farm Income

Net farm income (total sales, government payments, and other farm-related income minus total farm expenses) reflects the strength of the local agricultural community and can be an important measure for lenders and policy makers. The report area had a combined net farm income of \$88,123,000 in 2017, an average of \$226,537 per farm. This compares favorably to the statewide average farm income of \$56,606.

Report Area	Total Farms	Average Farm Income
Scott	389	\$226,537
Missouri	87,887	\$56,606

Data Source: US Department of Agriculture, National Agricultural Statistics Service, [Census of Agriculture](#). 2022.



CHALLENGE 4: Agricultural Growth & Stewardship: *Agricultural Economy*

Jobs Derived

Missouri has a diverse agriculture industry, strong in crops and livestock, as well as food and forestry processing industries. These industries remain a significant part of Missouri's economy, supporting more than 1 in every 10 jobs, on average. In 2021, agriculture, forestry, and related industries in Missouri were estimated to contribute: 456,618 jobs, \$93.7 billion in output and \$31.8 billion in household income. [Learn more about Missouri Agriculture's Economic Impact.](#)

Percent of Jobs Derived from Agriculture

29%

Scott

Missouri

23.55%

Data Source: Missouri Department of Agriculture, [Missouri Agricultural and Small Business Development Authority](#). 2021.

Value Added

Value-added agriculture refers to production, manufacturing, marketing or other services that increase the value of primary agricultural commodities. In 2021, the total value-added derived from agriculture, forestry and related economic activity was an estimated \$34.9 billion. Meat processing, food processing, animal and pet food manufacturing, and crop production and related industries are Missouri's top value-added products: \$9.5 billion and 155,425 jobs from livestock production and related industries alone. [Learn more about Missouri Agriculture's Economic Impact.](#)

Percent of Total Value Added from Agriculture

31.3%

Scott

Missouri

21.98%

Data Source: Missouri Department of Agriculture, [Missouri Agricultural and Small Business Development Authority](#). 2021.