

Lewis County 4-H New Family Guide 2019-2020



Terri Smith
4-H Youth Program Associate
Lewis County
University Of Missouri Extension
PO Box 68
Monticello, MO 63457
E-mail: smithterri@missouri.edu
Office Email: lewisco@missouri.edu
Ph: 573-767-5273
Fax: 573-767-5317

Web Pages
extension.missouri.edu/lewis
4h.missouri.edu
4h.missouri.edu/projects/projects1.htm
Find us on Facebook MU Extension in Lewis County

Welcome to 4-H!

Welcome to Lewis County 4-H! As your 4-H staff, we are here to provide oversight and management to our 4-H programs, training and support for our volunteers and collaborate with our communities to provide great opportunities for our 4-H youth! We have created this 4-H Family Handbook as a resource for 4-H families through the 4-H year.

4-H is encouraged to be a family organization with youth members, parents, leaders and staff having great fun while learning and working together! Locally, your family will participate in a community club with youth members assuming the leadership roles. Adults take a supportive role in 4-H, helping youth develop life skills through leadership opportunities at monthly club meetings. Major life skills of responsibility, communication and compassion are woven throughout the 4-H experience.

Adults....parents, guardians, community volunteers, and 4-H staff....work together to create learning and fun opportunities for youth. There are MANY ways in which parents/guardians can help! Perhaps the most important job for a parent is to say "YES!" when the 4-H'ers need you!

It is important for parents/guardians to stay informed of club, county, regional and state opportunities available to families. How? Listen closely at club meetings, read the monthly newsletter, CLOVER CONNECTION, either electronically or mailed (as indicated in your 4HOnline profile) to stay informed of 4-H happenings. Refer to this handbook and The Clover as your 4-H guides and bookmark the Missouri 4-H website: <http://4h.missouri.edu/>. Become comfortable using the 4HOnline Enrollment and Event Registration system. Your county 4-H information can be located at the following website: <http://extension.missouri.edu/lewis>.

If you have questions, please feel free to contact us at the Lewis County Extension Office, (573)767-5273 or email me at smithterri@missouri.edu.

Terri Smith

4-H Youth Program Associate
Lewis County



4-H COLORS

The official colors of 4-H are Kelly Green and White. The white symbolizes purity and the green represents life, springtime and youth.

4-H MOTTO

'To make the best better' is the aim of each member in improving project work and in building better clubs and communities.

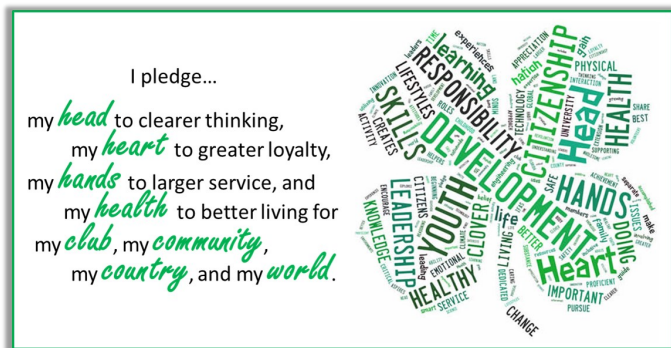
4-H SLOGAN

'Learning by doing' is the 4-H member's way of acquiring new skills working with the hands and learning how to get along with others in work and play.

MISSOURI 4-H MISSION

4-H is....creating environments in which young people are valued contributing members of their community.

18 USC 707



WAYS TO PARTICIPATE

4-H is open to anyone between the ages of 5-18 by December 31st of the current program year (we call this 4-H age). To participate in 4-H, you will be asked to enroll through the 4hOnline website each year.

CLOVER KIDS- This project introduces 4-H to 5 to 7 year olds. (Children must be 5 on December 31st of the program year.) Clover Kids may enroll in Project 481, 482 or 483 only. Clover Kids do not participate in any competitive events, contests or shows. 4-H Clover Kids do participate in all activities, fairs and contests, just like a regular 4-H member; however, they are not judged (1st, 2nd, 3rd, blue, red, white, etc.). Instead, all Clover Kids receive green ribbons or other recognition for participating. Clover Kids may not participate in large animal projects (for example Horse, Beef or Goats) or Shooting Sports projects.

4-H CLUB MEMBERSHIP - For youth ages 8 to 18 on December 31st of the program year. Youth participate in organized 4-H clubs and enroll in projects. Clubs elect officers and plan club programs that include health, recreation and community service.

ENROLLMENT YEAR

The 4-H project year is from October 1 through September 30. Current members typically re-enroll in the fall. Membership is open year round. Your club leader will have information about the on-line enrollment system for you, or contact the University of Missouri Extension Office for information. The enrollment website is: <https://mo.4honline.com/>

COST TO JOIN 4-H

In Lewis County, the cost to join 4-H is \$35.00 per year per member. This includes \$20.00 state dues, and \$15.00 county dues. The state dues includes the fee for accident insurance for all members of 4-H including those in horsemanship. *Some projects and activities have an additional cost.*

PARTICIPATING IN 4-H

Participation in 4-H is voluntary, but youth who are able to attend the majority of club and project meetings, county events, and do community service are rewarded at the end of the year. Be sure to keep track of all 4-H activities on a calendar so that the end of the year forms are easier to complete. A copy of the form is available all year on the website, so that you can see what to keep track of. <http://extension.missouri.edu/lewis/4HForms.aspx>

4-H NEWS AND INFORMATION

Families will receive letters and postcards about upcoming county events. We also use email, Facebook and our website to help keep people informed. It is the responsibility of each 4-H member and family to keep current on 4-H activities, events and deadlines. Check the front cover for resource websites.

Thank you for your interest in the Lewis County 4-H Program. This packet is full of valuable information that will help make your years in 4-H a little bit easier. 4-H can be a complicated youth organization with many acronyms and a sometimes confusing chain of command. We hope that all of your questions are answered with this packet.

CLUB MEETINGS

Each club holds a meeting in which the members discuss business. Club meetings provide members opportunities to meet people in their club and decide important issues about recreation, fundraising, community service and other activities. As they become older, these meetings allow youth to broaden their leadership skills by becoming an officer or committee chair. Only youth (ages 8-18) vote at 4-H Club meetings. Parents and volunteers may give advice and suggestions, but youth make club decisions themselves.

Club meetings also usually include a fun or educational activity after the business meeting and some clubs have snacks. Besides business meetings, clubs may also have activities in the following areas:

Fundraising – members are responsible for planning and implementing any fundraisers that the club decides to do. Committee members look for ways to raise money for the activities of the club.

Recreation – members present ideas to the club about what, where, and when to do recreation.

Community Service – members create a list of community service activities for the club to do throughout the year, then the club will decide which to do.

CLUB OFFICERS

Club officers are members that are learning more about leadership roles. They are usually elected in the fall and serve for a one-year term.

4-H PROJECTS



A 4-H “project” is a set of learning experiences in one area, such as foods, woodworking, or robotics. Check out “The Clover” magazine for project choices. Also on-line: <http://4h.missouri.edu/projects/projects1.htm>

Youth are given the opportunity to sign up for projects when they enroll online and can add and delete projects until **February 1**. Project meetings are usually held at a time and place other than club meetings. 4-H projects are educational, practical and enable youth to learn facts and skills useful in everyday life; learn how to communicate, work and play with others; learn more about educational and career opportunities; learn to be a leader and make new friends.

Project leaders determine the type of activities, place and time of project meetings. The age of participants can be limited depending on the safety requirements of the activities, with a limited number of participants (usually groups are small, less than 12), so that youth have a maximum opportunity for hands on learning).

There are several ways that youth can complete projects:

- Project Group- some youth from a club work with a volunteer from the club on a project.
- County-wide projects – some youth from several clubs work together with a volunteer to complete a project. These usually lasts for a short time, and do not run all year. For example, photography and robotics.
- Single project clubs – some clubs work together to complete a project (such as beef, shooting sports, horses, or dogs). These groups are on-going and like a regular 4-H Club, they have officers, do community service projects and have a treasury. Youth can join only the single project club or they can have another club as their primary club and also join the single project club.
- Club based projects – some clubs are small and so the group decides together which projects they will do. Then clubs work on the project at club meetings all together.
Family led projects – If there is not a volunteer in the club or county willing to lead the project, youth can work with a parent or guardian on the projects.

A good guideline is that first-year members sign up for a maximum of three projects, and older youth take up to 6 projects. Plan which projects you want to take when you enroll, or re-enroll the following years.

TIPS & THINGS TO REMEMBER

The following tips are intended to help you and your family get the most out of 4-H membership, making your years less confusing and more enjoyable:

1. **Participation is the key to 4-H.** The more that a member does, the more that the member and their family will get out of the program. As a 4-H family, you are invited to participate in all county and club activities, along with other activities offered at the state and national level.
2. 4-H is a family affair; you will get more out of it if your whole family is involved. Parents are invited and strongly encouraged to attend meetings with their kids. Both adults and youth will learn a lot.
3. Each 4-H member should plan to give a demonstration, illustrated talk, or speech at some time during the 4-H year. Some clubs give project demonstrations while others give individual demonstrations. This experience allows members the chance to grasp skills such as public speaking, organization, preparation, etc.
4. Not one person can do everything. Work as a team to get paperwork in, meet deadlines, and do projects. Remember it takes parents and leaders who are willing to volunteer to get the job done.
5. Take pictures of everything you do. Not only will these become nice mementos to remember 4-H, but you will also need them when filling out the end of the year paperwork.
6. To complete the year, ask your club leader for a Recognition Form. This form will assist you in capturing your experiences and will also be used for awards.
7. 4-H business meetings usually follow Robert's Rules of Order. This allows meetings to run smoothly and, most of the time, without problems.
8. You are encouraged to participate in the County Fair. You are encouraged to take at least one indoor project that tells or shows what you have learned throughout the year. Start planning the items you might make and take to the fair at your first project meeting. Remember there is a limit of five entries per project for indoor projects.
9. Be sure and ask question. We are excited about your interest in 4-H and want you to have a rewarding and successful experience.
10. **Have fun!**



4-H IS A FAMILY ORGANIZATION

The 4-H member needs support and encouragement from family. Parents and other family members can contribute to the 4-H program in the following ways:

- Determine project goals
- Obtain necessary project supplies
- Carry out work at home
- Maintain records
- Evaluate project work
- Attend meetings
- Participate in events
- Choose to become project leaders

Many 4-H volunteers are parents or guardians of 4-H members; but having parents participate is not a requirement.



University of Missouri, Lincoln University, U.S. Department of Agriculture & Local University Extension Councils Cooperating
An Equal Opportunity/ADA Institution