

MISSOURI STEER FEEDOUT 2019-20



Sponsored by: MO & SW MO Cattlemen's Association
Iowa State Extension

University of Missouri Extension
Tri-County Steer Carcass Futurity Cooperative

MISSOURI STEER FEEDOUT

Joplin Regional Stockyards - November 5, 2019



**Market
Evaluators**

**Jodie Pitcock
USDA
St. Joseph**

**Jackie Moore
Joplin Regional
Stockyards**

**Chip Kemp
American
Simmental
Association**



Andy McCorkill – Patrick Davis – Eldon Cole
University of Missouri Extension Field Specialists - Livestock

MU **Extension**
University of Missouri





05/09/2020 11:18

Keuper Farms, LLC., Ionia
Charolais & Red Angus
ADG 3.14 lbs. 50-88-0 -~~\$420.83~~

Steer #197



3.79 lbs. ADG
C- & 1.81 YG
P/L -\$143.90
3rd RVDOA & 4th RVDOF

Steer #204



Start Value
\$144.50
578 lbs.

3.37 lbs. ADG
C & 3.22 YG
P/L -\$225.91

Keuper Farms, LLC., Ionia
Charolais & Red Angus
ADG 3.14 lbs. 50-88-0 -~~\$420.83~~

Steer #200



3.06 lbs. ADG
Se- & 1.57 YG
P/L -\$289.08

Steer #203



Start Value
\$144.50
578 lbs.

2.85 lbs. ADG
Se+ & 2.63 YG
P/L -\$412.29

Kunkel Farms, Neosho

537 lbs.

\$153.30

Red Angus & Crosses

Medium mostly 2's a Couple 1's



Chip- "This group demonstrates the importance heterosis plays in the industry."

Jackie- "They're a pretty uniform set. They're the type that's easy to sell because they can go a lot of directions. They can go to the feedlot, a backgrounder or go out on wheat pasture and grow a while. They'd probably be sent somewhere to grow a while before hitting the feedyard."

Kunkel Farms, Neosho

Red Angus

ADG 3.09 lbs. 89-44-11 -~~\$~~286.19

Steer #98



2.79 lbs. ADG
C- & 2.19 YG
P/L -~~\$~~280.42

Steer #106



3.63 lbs. ADG
C- & 4.58 YG
P/L -~~\$~~290.34

Kunkel Farms, Neosho

Red Angus

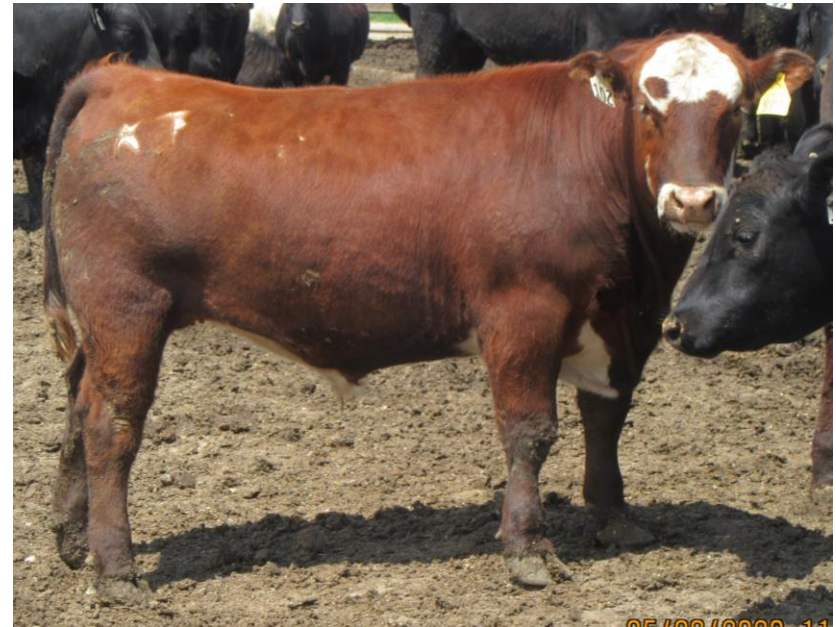
ADG 3.09 lbs. 89-44-11 -~~\$~~286.19

Steer #99



2.85 lbs. ADG
C- & 2.95 YG
P/L -~~\$~~165.68
Disposition 3.3

Steer #102



3.04 lbs. ADG
C & 3.39 YG
P/L -~~\$~~218.62
Disposition 3.0

Calvin Hudson, Middletown

Angus

ADG 3.57 lbs.

100-50-0

-~~\$~~256.42

Steer #166



3.56 lbs. ADG

C- & 2.64 YG

P/L -\$87.50

1st RVDOA & 6th RVDOF

17 in. REA

Steer #168



3.64 lbs. ADG

C+ & 3.72 YG

P/L \$10.53

CAB

Start Value

\$143.60

588 lbs.

Calvin Hudson, Middletown

Angus

ADG 3.57 lbs. 100-50-0 -~~\$256.42~~

Steer #170



3.28 lbs. ADG
C & 3.32 YG
P/L -~~\$178.44~~

Charles Rosenkrans, Paris

Angus

ADG - 3.09 lbs

100-0-20

-~~\$~~204.49

Steer #162



3.21 lbs. ADG
P- & 3.86 YG
P/L -\$150.57

Start Value
\$135.20
541 lbs.

Steer #163



3.14 lbs. ADG
C+ & 3.64 YG
P/L -\$253.04

Charles Rosenkrans, Paris

Angus

ADG - 3.09 lbs 100-0-20 -\$204.49

Steer #164



2.81 lbs. ADG
P- & 5.00 YG
P/L -\$399.87
1.13 In. Fat

Wes Backes, Bonnets Mill Red Angus

ADG 3.40 lbs. 95-21-16 -\$201.06

Steer #189



**4.50 lbs. ADG
C+ & 3.24 YG
P/L \$7.88
CAB**

Steer #188



**Start Value
\$151.19
541 lbs.**

**3.00 lbs. ADG
P- & 2.76 YG
P/L -\$76.17**

Wes Backes, Bonnets Mill Red Angus

ADG 3.40 lbs. 95-21-16 -\$201.06

Steer #192



**3.82 lbs. ADG
P- & 3.34 YG
P/L -\$5.07**

Steer #181



**3.43 lbs. ADG
P- & 2.89 YG
P/L \$45.41**

Wes Backes, Bonnets Mill Red Angus

ADG 3.40 lbs. 95-21-16 -\$201.06

Steer #195



**3.34 lbs. ADG
P- & 4.81 YG
P/L -\$234.03
1 In. Backfat**

Steer #190



**3.28 lbs. ADG
P- & 2.90 YG
P/L -\$27.88**

Russell Marion, Pierce City
704 lbs. \$141.00
Angus Sired Upper Medium high 2's



Jodie- "These calves were a bit full. The color hurt a couple as well."

Chip- "Uniformity is important. These aren't." "The spotted ones will get duped." "They've got stretch and extension to them, indicating they've got some grow."

Jackie- "They're the type I send to corporate feeders they'll be hedged." "If I sent them on a load to IA, they'd send three of them back... Keep in mind though, just because they're docked today doesn't mean they will be on the rail. There's potential to make money on them and that's what I like."

Russell Marion, Pierce City Angus

ADG 3.30 lbs. 90-50-10 -\$195.65

Steer #95



3.94 lbs. ADG

P- & 2.48 YG

P/L \$19.41

5th RVDOF & 10th RVDOA

Steer #90



3.43 lbs. ADG

C & 3.51 YG

P/L -\$103.76

CAB

Russell Marion, Pierce City Angus

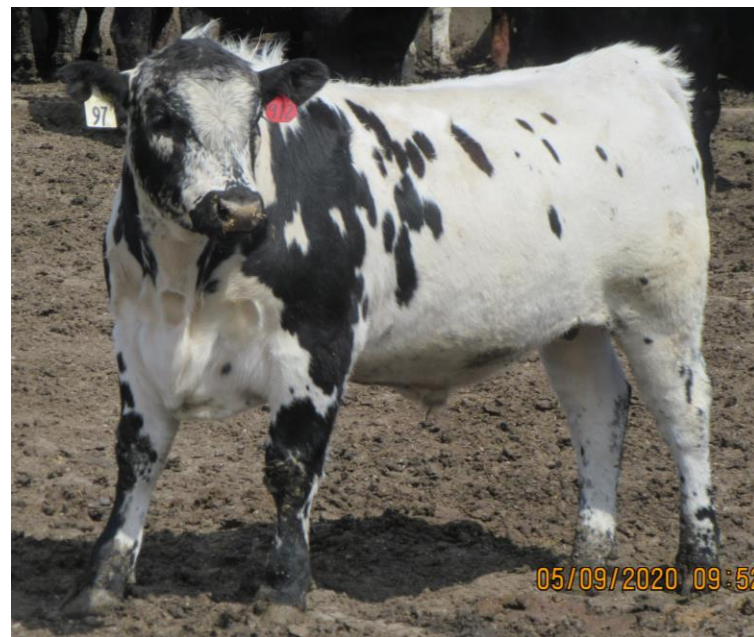
ADG 3.30 lbs. 90-50-10 -\$195.65

Steer #92



**3.86 lbs. ADG
C & 3.65 YG
P/L -\$7.79
9th RVDOA**

Steer #97



**3.00 lbs. ADG
C & 2.91 YG
P/L -\$148.70**

Jack Sharkey, Taylor
Angus & Polled Hereford
ADG - 3.44 lbs 100-50-33 - \$167.52

Steer #171



3.53 lbs. ADG
C & 2.16 YG
P/L -\$159.79
Disposition 3.0

Start Value
\$142.00
634 lbs.

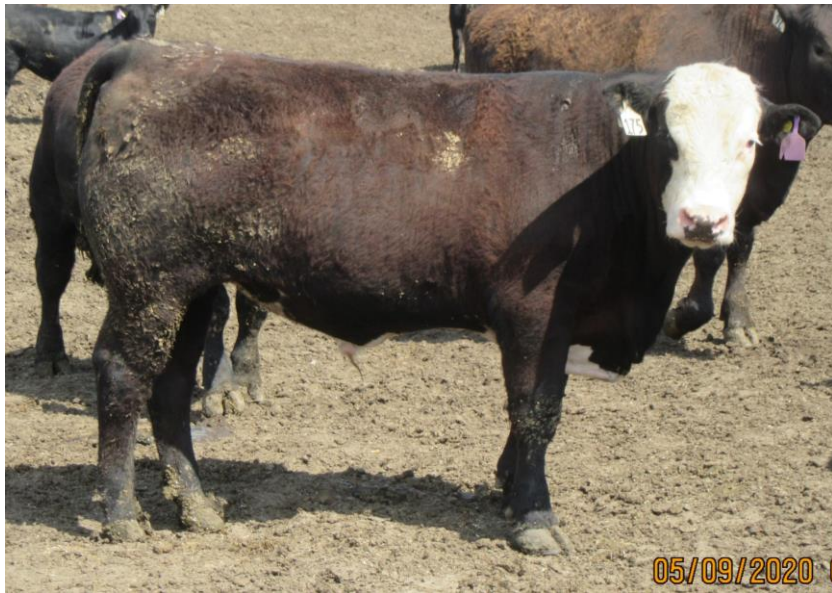
Steer #176



3.96 lbs. ADG
C & 2.63 YG
P/L \$30.80
REA TOO BIG For CAB
2nd RVDOF & RVDOA

Jack Sharkey, Taylor
Angus & Polled Hereford
ADG - 3.44 lbs 100-50-33 -\$167.52

Steer #175



3.02 lbs. ADG
C+ & 4.65 YG
P/L -\$394.46
TOO FAT for CAB

Steer #172



3.69 lbs. ADG
P- & 4.20 YG
P/L -\$38.96

Norman Garton, Nevada

791 lbs.

\$142.57

Purebred Angus

Medium/Large mostly 1's



Jodie- "They were a little full, and looked a little stagy, but they had lots of stretch to them."

Chip- "Nice bull battery, I would have held on to them before I cut them too, I'd like to see the ones who made the bull pen." With the genetics behind them they'll make for quality carcasses on the rail."

Jackie- "They are bull headed, that hurts them a little." "They've got a lot of muscle to them, they'll do well."

Norman Garton, Nevada

Angus

ADG - 3.48 lbs 100-29-29 -\$157.81

Steer #147



2.85 lbs. ADG
C- & 2.82 YG
P/L -\$328.83

Steer #148



3.50 lbs. ADG
C & 2.84 YG
P/L -\$137.73

Norman Garton, Nevada

Angus

ADG - 3.48 lbs 100-29-29 -\$157.81

Steer #150



3.53 lbs. ADG
P- & 4.14 YG
P/L \$3.10

Steer #151



3.60 lbs. ADG
P- & 4.62 YG
P/L -\$166.31

Gerald Eggerman, South Greenfield
719 lbs. \$142.67
Angus-Sired Medium/Large Mostly 1's



Jodie- "They're short weaned and take a bit of a dock because of that and a couple bad eyes in the bunch." "They are fleshy and heavy muscled and that helps them out."

Chip- "They really should be weaned a little longer. 45 days is the bare minimum and we'd really like to see 60, particularly this time of year. It's not uncommon to see a 50% increase in morbidity or mortality with short weaned calves going straight to the feedlot." "They are stout and full of muscle. They're gonna get big, perhaps too big to finished by the time they get killed."

Jackie- "We still sell pounds at the end of the day, they'll push down the scales." "We won't send anything to the feedyard with less than 60 days weaning behind them. We've learned our lessons the hard way." "THEY'RE GONNA GET BIG"

Gerald Eggerman, South Greenfield

Angus

ADG - 3.59 lbs

100-0-33

-\$110.88

Steer #130



3.96 lbs. ADG
P & 4.70 YG
P/L -\$4.51

Steer #131



3.79 lbs. ADG
C- & 3.65 YG
P/L \$90.89
1060 lb. Carcass Wt.

Gerald Eggerman, South Greenfield

Angus

ADG - 3.59 lbs

100-0-33

-\$110.88

Steer #134



4.04 lbs. ADG
C- & 3.23 YG
P/L \$1.30

Steer #135



2.98 lbs. ADG
C- & 3.82 YG
P/L -\$351.83

Goodnight Angus, Carthage
696 lbs.

\$149.83

Purebred Angus

Medium & Large 1's & 2's



Chip- "This set carries some top end, terminally minded genetics, with built in performance both in the feedlot and on the rail." "They have a thrifty appearance and should remain healthy." "They're well muscled." "Should have a high success rate."

Jackie- "They're as good as any. They'd be at the top of the market any day of the year here at Joplin." They have a lot of frame to them. They'll likely top 1500# at slaughter."

Jeff Goodnight, Republic Angus

ADG - 3.63 lbs

100-25-25

-892.37

Steer #76



**3.76 lbs. ADG
C- & 2.99 YG
P/L \$20.07
7th on RVDOF**

Steer #78



**2.64 lbs. ADG
C & 3.54 YG
P/L -\$359.50**

Jeff Goodnight, Republic Angus

ADG - 3.63 lbs

100-25-25

-~~\$~~92.37

Steer #77



**3.67 lbs. ADG
C & 3.96 YG
P/L \$5.91
CAB**

Steer #83



**4.15 lbs. ADG
P- & 4.45 YG
P/L -\$8.01**

Carrier's Muddy Creek Angus, Lockwood
772 lbs. \$147.67
Purebred Angus Medium & Large 1's & 2's



Jodie- "They were full and a couple looked staggy that hurt them a little."

Chip- "Being long weaned is a big plus. They've got some stretch to them and are well muscled. They have feeding and profit potential."

Jackie- "They're the type we like. Big, black and easy to sell."

Carrier's Muddy Creek Angus, Lockwood Angus

ADG - 3.60 lbs

100-17-17

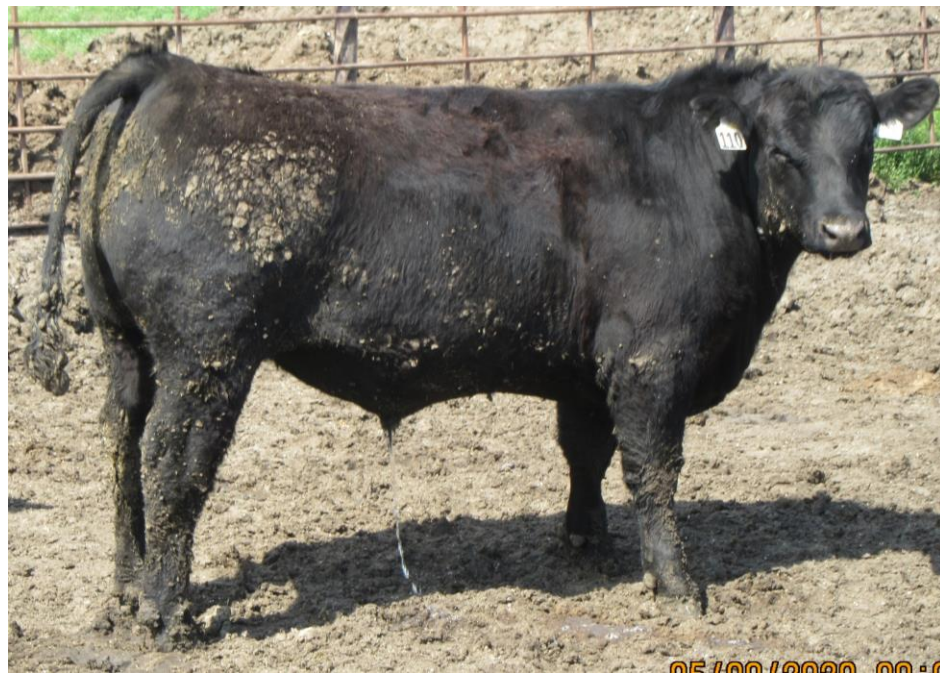
-~~\$~~84.49

Steer #116



**3.66 lbs. ADG
P- & 3.41 YG
P/L \$34.52
8th RVDOF**

Steer #110



**3.79 lbs. ADG
P- & 3.48 YG
P/L -~~\$~~40.58**

Carrier's Muddy Creek Angus, Lockwood Angus

ADG - 3.60 lbs

100-17-17

-\$84.49

Steer #117



**4.02 lbs. ADG
P & 3.56 YG
P/L -\$97.39**

Steer #115



**3.77 lbs. ADG
P- & 3.24 YG
P/L \$116.48**

Carrier's Muddy Creek Angus, Lockwood Angus

ADG - 3.60 lbs

100-17-17

-\$84.49

Steer #113



3.26 lbs. ADG

P & 4.17 YG

P/L -\$247.38

Duane Walker, Neosho

703 lbs.

\$142.60

Hereford x Brangus cows

Medium & Large 1's & 2's



Chip - "They'll make money in the yard; They may not go choice." "Crossbreeding goes a long ways; these cattle are gonna grow."

Jackie - "These are the type they want in Nebraska, pounds and yield... They might not be done growing by the time they're killed." "I could ship them most anywhere and make them successful."

Duane Walker, Neosho Hereford

ADG 3.68 lbs. 40-40-0 -\$70.23

Steer #153



**4.21 lbs. ADG
Se+ & 3.87 YG
P/L \$59.91
9th on RVDOF**

Steer #154



**3.74 lbs. ADG
C- & 2.97 YG
P/L \$95.42**

Duane Walker, Neosho Hereford

ADG 3.68 lbs. 40-40-0 -\$70.23

Steer #155



**3.33 lbs. ADG
Se+ & 3.74 YG
P/L -\$319.31**

Steer #157



**3.87 lbs. ADG
Se+ & 2.62 YG
P/L \$25.54**

Ronnie Veith, Purdy

570 lbs.

\$139.30

Hereford & Angus x Simx cows

Medium 2's



Jodie- "They were a little full and the color variability really hurt them."

Chip- "The variability doesn't end with color... you'll see a lot of difference in the carcass too. There's also more variation to them than what first meets the eye."

Jackie- "They're in good condition for selling here. "The one more straight Hereford looking one might hurt the average a little." "To get the most out of them, put a size sort on them."

Ronnie Veith, Purdy
Polled Hereford & Angus
ADG - 3.64 lbs 90-50-10 - \$26.66

Steer #143



4.55 lbs. ADG
C+ & 2.84 YG
P/L \$219.76

1st ADG & RVDOF 4th RVDOA CAB

Steer #145



4.03 lbs. ADG
C- & 3.69 YG
P/L -\$37.33

Ronnie Veith, Purdy
Polled Hereford & Angus
ADG - 3.64 lbs 90-50-10 - \$26.66

Steer #142



3.60 lbs. ADG
P- & 4.28 YG
P/L -\$155.69

Steer #137



3.76 lbs. ADG
C+ & 2.65 YG
P/L \$87.11
3rd RVDOF 7th RVDOA

Ronnie Veith, Purdy
Polled Hereford & Angus
ADG - 3.64 lbs 90-50-10 - \$26.66

Steer #139



3.56 lbs. ADG
P- & 3.25 YG
P/L \$41.57

Vandalfsen Farms, Reeds

488 lbs. \$100.00

Polled Hereford x Jersey/Holstein Small to Medium 2's & 3's



Jodie- This was the hardest set to value. Basically averaged what dairy calves would have brought and comparable beef calves and came up with \$1.00.

Chip- "Beef on dairy is consuming a big chunk of my time lately." Our IGS database suggests that composite bulls work best on the dairy herds. We know dairy calves take a huge hit in the beef business. Compare them to straight bred dairy steers and you have more profit potential." "These calves need more frame. A shot of continental blood would help.

Jackie- "They're gonna be hard to sell." "I only like cattle that make money, these will probably make money if you can keep them healthy because they were undervalued." "They'd probably do best going to Texas." "They'll be fat by the time they're 1150#."

Vandalfsen Farms, Reeds

Polled Hereford

ADG - 2.99 lbs 44-78-0 \$61.63

Steer #124



3.04 lbs. ADG
C- & 2.44 YG
P/L \$214.52

Steer #127



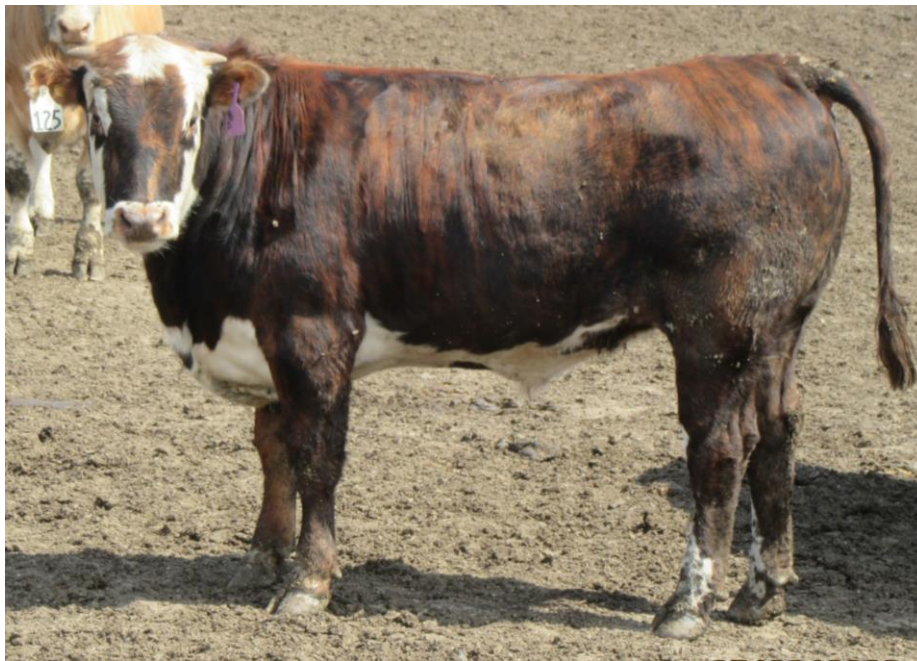
3.57 lbs. ADG
P- & 3.07 YG
P/L \$208.22

Vandalfsen Farms, Reeds

Polled Hereford

ADG - 2.99 lbs 44-78-0 \$61.63

Steer #125



2.46 lbs. ADG
Se- & 2.28 YG
P/L -\$41.87

Steer #126



3.36 lbs. ADG
C & 3.67 YG
P/L \$153.24

Vandalfsen Farms, Reeds Polled Hereford

ADG - 2.99 lbs 44-78-0 \$61.63

Steer #122



**2.59 lbs. ADG
Se- & 2.40 YG
P/L -\$15.42**

Steer #121



**3.24 lbs. ADG
Se+ & 2.63 YG
P/L \$14.07**

**All
Vandalfsen
Steers were
Disposition 1**