

UNIVERSITY OF MISSOURI EXTENSION

## Hickory County

2018 ANNUAL REPORT

UNIVERSITY OF MISSOURI  
 Extension







**OFFICE OF THE VICE CHANCELLOR  
FOR EXTENSION AND ENGAGEMENT**

108 Whitten Hall  
University of Missouri  
Columbia, MO 65211

PHONE 573-882-2394

EMAIL [email@missouri.edu](mailto:email@missouri.edu)

WEB [extension.missouri.edu](http://extension.missouri.edu)

Dear county commissioners and friends of MU Extension,

The past year has been extremely productive for University of Missouri Extension and Engagement. With the launch of our county engagement specialist model, which is the centerpiece of a long-overdue restructuring, we are better positioned to serve Missourians.

Most county engagement specialists are now in place and the formal training for this new position rolled out this fall. By January 2019, we expect our CESs to be well on their way to success. I see a great future for them and the communities they serve.

At the MU campus, we have been busy putting in place online resources that will benefit Missouri communities. In particular, the All Things Missouri web portal is an exciting tool that can help community leaders search for valuable data. I encourage you to check it out at <https://allthingsmissouri.org/>.

When 2018 began, we set out to meet with every county's administrative body. This effort provided valuable insight and helped strengthen relationships; and as a result, we will engage in a similar effort in 2019. Meeting stakeholders and deepening county relationships is something we truly enjoy.

As you read your county's annual MU Extension report, I am confident that you will be pleased with the results accomplished through county-based University of Missouri faculty. Our faculty take pride in their efforts to respond to local extension council input.

At the state level, we have committed to a goal of doubling the economic impact of MU Extension over the next decade. This goal of \$2 billion in public value is ambitious — but, by meeting this challenge, we will help a great many Missourians.

Your support of MU Extension and our efforts in your community are greatly appreciated. As always, I welcome your input on how the University of Missouri can better serve your community and its people.

Sincerely,

A handwritten signature in black ink that reads 'Marshall Stewart'. The signature is fluid and cursive, with a long horizontal stroke at the end.

Marshall Stewart





# Hickory County



University of Missouri System  
COLUMBIA | KANSAS CITY | ROLLA | ST. LOUIS

## UM System Footprint in the county in 2018



### Fall county students

#### 11 students

- 10 Undergraduates
- 1 Graduate and professional student
- 10 Full-time students
- 1 Part-time student



### County employees and retirees

#### 4 people employed by UM

- 2 Campuses
- 2 UM Health Care



### County alumni

#### Selected school alumni

- 5 Nursing
- 1 Health Professions
- 1 Pharmacy
- 1 Veterinary Medicine
- 3 Agriculture
- 5 Engineering
- 2 Law

#### Alumni teaching K-12

- 2 teachers
- 2% of all district teachers



### County breakdown

#### MU

- 1 student
- 41 alumni
- 1 employee

#### UMKC

- 3 students
- 17 alumni
- 1 employee

#### Missouri S&T

- 7 students
- 5 alumni
- 0 employees

#### UMSL

- 0 students
- 4 alumni
- 0 employees



### County properties and offices

MU Extension in: Hickory County



County population: 9,267



### County services provided

#### Health care

- 136 patients seen at UM Health Care, with \$18,950 of uncompensated care
- 6 patients seen at UMKC School of Dentistry with a statewide average of \$53.20 per patient in uncompensated care
- University of Missouri Health Care's Missouri Telehealth Network provided services to 32 patients at 2 sites

#### Extension

- 9,988 Total educational contacts from MU Extension to residents of district counties, including:
- 257 contacts related to productive farming, better gardening, and managing natural resources
- 9,714 contacts related to healthy eating and aging, strengthening families, personal finance, or youth development
- 17 contacts related to starting businesses, developing community leaders, or renewing the local economy

# Hickory County



University of Missouri System  
COLUMBIA | KANSAS CITY | ROLLA | ST. LOUIS

## UM System Statewide Footprint

### Economic and Community Development Highlights

- Business development specialists worked with small businesses and entrepreneurs statewide to create 11,559 jobs.



For every dollar invested in University of Missouri Extension \$11 of public value is returned; generating \$945 million in direct and economic benefit to Missouri in 2016.

- Between FY2012 and FY2017, UM System brought Missouri more than \$1.1 billion in federal and private research funds, funded primarily from outside the state but spent within the state.



In 2018, the university was issued 39 patents and filed 78 patent applications.

- In 2018, the UM System construction projects resulted in a total investment in the state of \$122.7 million.



In FY 2018, Missouri Telehealth Network brought the expertise of University of Missouri Health Care physicians to underserved areas—2,164 patient consults in 43 counties.

### Education and Training Provided



72,581 police, fire fighters, and medical professionals attending continuing education



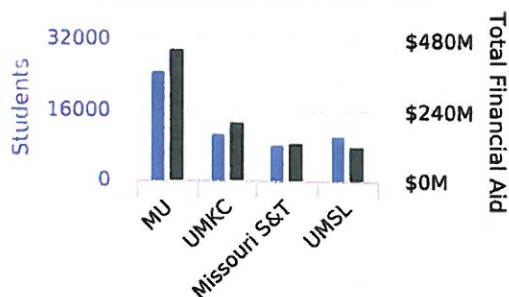
Agriculture and natural resource programs served 136,345 farmers and related businesses



316,339 youth and stakeholder educational contacts in 4-H clubs, schools, camps and other programs

### Education Highlights

#### Financial Aid Awards



- Students receiving financial aid
- Amount of financial aid awarded

65% of the UM System's 84,168 Fiscal Year 2018 students received financial aid totaling \$898 million in Fiscal Year 2018



UM System's MOREnet (Missouri Research and Education Network) provides internet connectivity, access, support and training to 58 higher education institutions (275,000 students), 493 K-12 school districts (831,000 students) and 121 public libraries (serving nearly 3 million Missourians) in 2017

- UM System awarded 52.2% of Missouri's 33,373 bachelor's or higher degrees from four-year public institutions in 2017.
- In 2018, UM System's \$30.3 million in National Science Foundation (NSF) grants represented 92.5% of all NSF grants made to Missouri public universities.

Supporting the University of Missouri is an investment in the future of Missouri.

The university advances Missouri citizens and communities through its mission of teaching, research, public service, and economic development across our four campuses and University of Missouri Extension.

Prepared in December 2018, based on the best available and most recent data. Data Sources include: Missouri Office of Administration • UM IR • Office of Social and Economic Data Analysis (OSEDA) • Center for Applied Research and Engagement Systems (CARES) • MU • UMKC • Missouri S&T • UMSL • UM System • UM Health Care • MU Extension • US Census Bureau • US Dept. of Health and Human Services • National Science Foundation





**Amy Bartels, Field Specialist in Human Development & Family Science**

**2018 ACTIVITY REPORT**

**JANUARY:**

- Stay Strong, Stay Healthy (Laclede County: Hughes Senior Center-7 participants)
- Stay Strong, Stay Healthy (Laclede County: Conway Senior Center-4 participants)
- Diabetes Self-Management (Laclede County: Jordan Valley-12 participants)
- Performance Nutrition (WC Region: 4-H Energizer-100 participants)

**FEBRUARY:**

- Healthy Eating on a Budget (Laclede County: TOPS, Conway-10 participants)
- Stay Strong, Stay Healthy (Camden County: Lake Ozark, 17 participants)
- Healthy Eating on a Budget (Camden County: Headstart, 8 participants)

**MARCH:**

- Diabetes Self-Management (Hickory County: 4 participants)
- Diabetes Self-Management (Dallas County: 5 participants)
- Cooking Matters at the Store (Waynesville, Pulaski County: 13 participants)

**APRIL:**

- Chronic Disease Self-Management (Camden county: Lake Ozark, 8 participants)
- Cooking Matters (Pulaski County: MOCA, 5 participants)
- Performance Nutrition-Hydration (Laclede County: 4-H group, 6 participants)

**MAY:**

- A Matter of Balance (Laclede County: Hughes Center, 13 participants)

**JUNE:**

- Cooking Matters at the Store (Camden County: 7 participants)
- Cooking Matters at the Store (Dallas County: 8 participants)
- Nutrition presentation (Camden County: youth, library, 10 participants)

**JULY:**

- Senior Day at the Fair (Laclede County: 100 participants)
- Performance Nutrition-Hydration (Camden County: Camdenton HS, 100 participants)

**AUGUST:**

- A Matter of Balance (Camden County: 14 participants)
- Diabetes Self-Management (Miller County: 12 participants)



**SEPTEMBER:**

- A Matter of Balance (Camden County: 13 participants)
- Taking Care of You (Greene County: MO Lagers Assoc, 50 participants)
- Food Preservation (Boone County: Tomato Festival, 30 participants)

**OCTOBER:**

- Osage Beach Fall Festival (Camden County: 100 participants)
- Child Care Training (Camden County: 10 participants)

**NOVEMBER:**

- Boost Your Brain and Memory (Camden County: 10 participants)
- Boost Your Brain and Memory (Camden County: 12 participants)
- Youth Mental Health First Aid (Boone County: 20 participants)
- Alzheimer's 101 (Laclede County: Hughes Senior Center, 4 participants)
- Alzheimer's 101 (Laclede County: Conway Senior Center, 18 participants)
- Alzheimer's 101 (Hickory County: 15 participants)



University of Missouri Extension  
Family Education Nutrition Program  
908 N. 2<sup>nd</sup> St.  
Clinton, MO 64735  
660-383-1633

January 23, 2019

Hickory County Extension Center  
18715 Cedar Street  
Hermitage, MO 65668

Re: Hickory County Annual FNEP Report

The Family Nutrition Program (FNP) brought \$9,449,699.00 federal funds to the state of Missouri. These funds were used to provide nutrition education to 735,541 Supplemental Nutrition Assistance Program recipients and eligible citizens of Missouri. There were 2,932,390 educational contacts. This year we had 2,242,249 indirect educational contacts. Indirect contacts are reached through newsletters, health fairs, food pantries and the Show Me Nutrition help line.

Participants in FNP become more aware of nutrition, make healthier meal and snack choices, eat breakfast more often, are more willing to try new foods, increase their physical activity and in general make healthier food choices. Those who practice healthy eating and activity behaviors are more likely to enjoy a high quality of life as an adult and into old age. A healthy labor force is critical to attracting and keeping jobs in Missouri. In addition, this important programming effort serves to reduce healthcare costs over the participant's lifetime, saving taxpayers money in reduced public healthcare benefits and insurance premiums.

In Hickory County, 1,915 Youth and 3,111 Adults contacts were made for a total of 5,026 contacts.

The following is a list of the locations where participants were served in Hickory County:

**Schools**

**Agencies**

|                       |  |
|-----------------------|--|
| Hermitage Elementary  | Hickory County Health Department             |
| Hermitage High School | Peggy's Daycare                              |
| Skyline Elementary    | Hickory County Senior Center/Care Connection |
| Skyline High School   | Hermitage Head Start                         |

*University of Missouri, Lincoln University, U.S. Department of Agriculture and Local Extension Councils Cooperating  
Equal opportunity/ADA institutions*

University Outreach and Extension does not discriminate on the basis of race, color, national origin, sex, sexual orientation, religion, age, disability or status as a Vietnam era veteran in employment or programs.



|                       |   |
|-----------------------|---|
| Skyline Middle School | Hickory County CARES  |
| Weaubleau Elementary  | Hickory County- West Central Missouri<br>Community Action Agency (WCMCAA) |
| Weaubleau High School |   |
| Wheatland Elementary  |   |

In addition to the numbers, Allison Gunter shared this success story demonstrating local impact:

*While working with a group of 6<sup>th</sup> graders one day and talking about the power nutrients they needed for their growing bodies during this time, we make cheese quesadillas in class. A simple thing to fix but the kids were of course excited to eat and they loved them. That very evening I got a text message from a friend with a picture attached of her two boys eating cheese quesadillas! She told me that her son came home and started telling his older brother that these were good for their bodies right now and that they tasted good so they had their mom make them some. Now every time I see their mom at any school event she tells me how she HAS to keep cheese and tortillas in the house at all times and she's constantly fixing them for her boys. She also told me she was glad they listened to someone because they don't listen to her!*

In summary, it has been a successful year in Hickory County for FNP. We look forward in 2019 to more programming opportunities and continued progress in helping to improve the lives of Missouri families. We would like to wish you Happy Holidays and all the best in the New Year.

Thank you,

*Michelle Chapman*

Michelle Chapman  
 West Central FNEP Coordinator



**First, allow me to introduce myself. My name is Kyleigh Sullivan and I am the Human Development and Family Science Specialist headquartered in Cass County. I serve a total of ten counties including Hickory.**

**I am a native Missourian; grew up on a farm in Pettis County. After graduating from La Monte High School I attended Missouri State University.**

**I graduated with my Masters in Early Childhood Education and Family Studies in 2016. I spent almost 2 1/2 years working in downtown KC with youth experiencing homelessness before joining MU Extension in September 2018.**

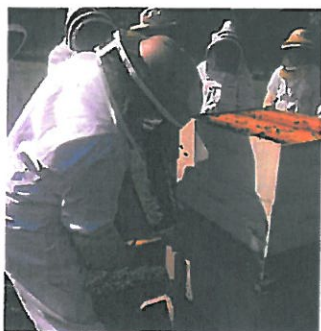
**I'm excited to begin programming here in Hickory County in 2019! I plan to get Focus on Kids up and running in Hickory County for 2019. I also plan on bringing some programs to our older adult community as well. These focus on primarily brain health, fall prevention, and self-advocacy with doctors and family members. I have something for everyone though! Additional programming includes relationship and parenting workshops for adults and families, life skills classes for youth, and professional development training for people who work with young people. I am always open to requests so feel free to reach out to the Hickory County Extension Office if you have any questions or suggestions for programming in the community.**



January/February 2018

HICKORY COUNTY

## LOCAL



### Beginners Beekeeper Workshop

The Pomme de Terre Beekeepers and MU Extension are sponsoring the Beginners Beekeeper Workshop in the community room of Hermitage Nursing & Rehab. The program is on Thursday nights for the month of February.

Participant cost is \$35, which includes a year membership to the Pomme de Terre Beekeepers Association and a book.

Classes include: The place of honey bees in the world, The honey bees world; The beehive and its accessories, getting started in beekeeping; honey production & pollinators, products of the beehive; and off season management, honey bee disorders, & nest invaders.

## REGIONAL

### County Engagement Specialists – The Local Touch

We continue to meet with local extension councils and commissioners to gather input into the new staffing plan. We have repeatedly heard from the councils and commissions that they like the idea of having that local person who acts as the local contact and conduct to and from the citizens to the resources of the University of Missouri.

Those we have visited, also have made positive comments about the concept of the trio's where the counties are divided into groups of three. In each trio there is a Nutrition and Health Specialist, Youth Development Specialist and a Business Community Specialist. These individuals also act as the County Engagement Specialists. The remaining specialists will serve larger areas very much like they have in the past.

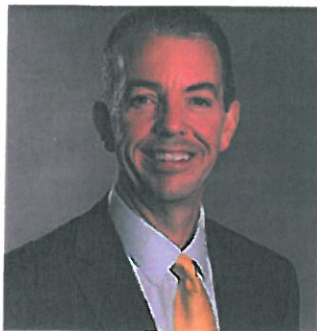
If we have not made it to your county, we look forward to gathering input from everyone as we meet with councils and commissioners. Please plan to provide input when we are in your county.



**Wayne Prewitt**

West Central  
Regional Director

## STATEWIDE



**Marshall Stewart**

Vice Chancellor for  
Extension and  
Engagement

### Message From Marshall Stewart

It's hard to believe that a month has gone by since the MU Extension Summit. Almost 500 people from across the state gathered to begin a new chapter in the MU Extension story. While organizational change can be challenging, I am pleased to report that the vibe at the Summit made it clear that MU Extension's people are committed to *All Things Missouri*. In the coming weeks, we will share more details about new online tools being developed for Missourians to use when looking for information and insight. We will also have greater clarity on efforts to deepen engagement and the connection between the University of Missouri and the people. Our focus on *All Things Missouri* is bringing about a culture of innovation and responsiveness that you will be proud of. Your support during this time of rediscovery and transition has been greatly appreciated. As always, I appreciate all you do to advance MU Extension and the university it extends from.



**KEY NUMBERS**

| Program                    | Number of Contacts |
|----------------------------|--------------------|
| Client Consultations       | 102                |
| Presentations Given        | 29                 |
| Presentations Participants | 448                |
| FNEP Nutrition Visits      | 111                |
| FNEP Participants Taught   | 560                |
| Telephone Inquiries        | 76                 |
| Walk-In Inquires           | 34                 |
| Hay & Soil Tests           | 25                 |
| Newspaper Articles         | 17                 |

**UPCOMING EVENTS**

- Blooming Hickorys 4-H Meetings – 4<sup>th</sup> Monday of each month
- Introduction to Beekeeping in Buffalo – March 5
- Private Pesticide Applicator Class in Hermitage – March 12
- Food Safety Modernization Act Class in Buffalo – March 14
- Understanding Your Soil Test Results in Buffalo – March 19
- Hickory County Ag Conference at McCarty Center – March 23
- Small Steps to Health & Wealth in Buffalo – Thursdays - April 5-26
- Container Grown Gardening in Buffalo – April 9
- 4-H Dinner and Dessert Auction at Pomme de Terre United Methodist Church – April 21

**DID YOU KNOW?**

MU's Regional Grazing Schools increased the carrying capacity of farms by 30 percent; the value of those additional stock rates brings an estimated \$83.6 million more to the state's economy each year.

**CONTACT INFORMATION**

**MU Extension in Hickory County**  
18715 Cedar Street  
Hermitage, MO 65668

Phone: 417-745-6767

Fax: 417-745-2324

Email: [hickoryco@missouri.edu](mailto:hickoryco@missouri.edu)

Web: <http://extension.missouri.edu/hickory>

Facebook: MU Extension in Hickory County

UNIVERSITY OF MISSOURI  
 **Extension**  
Hickory County



March/April 2018

HICKORY COUNTY

## LOCAL

### Hickory County Ag Conference



Speaker N.T. Crosby from Purina, spoke to those in attendance at the Annual Hickory County Ag Conference about the Heifer Development Program & Nutritional Needs. He discussed body conditions and the weight a cow should be when breeding. As well as establishing a two year cycle for the heifer development program.

Other speakers that night were Ashley Fisk (Soil & Water Conservation District), Gorman Bennett (Natural Resources Conservation Service), Rick Lightfoot (Farm Service Agency), Mary Sebade (Nutrition & Health Education Specialist, MU Extension), and Terry Halleran (Agronomy Specialist, MU Extension).

## REGIONAL

### A New Day Dawns for Extension

The staffing plan has rolled out to all Extension employees, the Extension Council's and many of local County Commissioners have seen the new staffing plan. Although there may have been some surprises the staffing plan is based on the feedback we received from all of the Councils, Commissions and of course faculty and staff located across the regions. This is the first significant change to our system in many, many years. These changes will allow us to bring more services and connections from the entire University of Missouri System directly to your community. It's a great day for Extension and all of the communities throughout Missouri. Feel free to contact me if you have not seen a copy of the staffing plan and I will be glad to provide it to you. Call my office at: 660-383-1633.



**Wayne Prewitt**

West Central  
Regional Director

## STATEWIDE



**Marshall Stewart**

Vice Chancellor for  
Extension and  
Engagement

### Message From Marshall Stewart

In response to citizen and extension faculty input, MU Extension will transition to a county engagement specialist (CES) model this year. This change reflects the fact that all communities benefit from engagement with the university.

The CES role is place-based, with a 50-percent focus on engaging and connecting communities to university resources. A CES will typically be an individual working in youth development, nutrition and health education, or community economic development. They will have access to new online community engagement tools and information.

Extension will also have program-based faculty who are not tied to a community assignment. This recognizes that some disciplines are not needed everywhere. For example, livestock or soybean knowledge is only needed where these are produced.

Under this structure, the combination of talented field faculty, stronger connections to campus faculty, and sophisticated online engagement and information tools will help the people of Missouri and community and business leaders realize economic opportunities, healthy futures, and education access and excellence.



**KEY NUMBERS**

| Program                    | Number of Contacts |
|----------------------------|--------------------|
| Client Consultations       | 102                |
| Presentations Given        | 29                 |
| Presentations Participants | 448                |
| FNEP Nutrition Visits      | 179                |
| FNEP Participants Taught   |                    |
| Telephone Inquiries        | 76                 |
| Walk-In Inquires           | 34                 |
| Hay & Soil Tests           | 25                 |
| Newspaper Articles         | 17                 |

**UPCOMING EVENTS**

- Blooming Hickorys 4-H Meetings – 4<sup>th</sup> Monday of each month
- Small Steps to Health & Wealth in Buffalo – Thursdays - April 5-26
- 4-H Dinner and Dessert Auction at Pomme de Terre United Methodist Church – April 21
- Small Steps to Health & Wealth in Hermitage – Mondays – April 23 – May 14

**DID YOU KNOW?**

Ninety-four percent of MU Extension's 2,118 Nursing Outreach participants live outside the St. Louis and Kansas City metro areas. This is just another way MU strengthens rural life in Missouri.

**CONTACT INFORMATION**

**MU Extension in Hickory County**  
18715 Cedar Street  
Hermitage, MO 65668

Phone: 417-745-6767

Fax: 417-745-2324

Email: [hickoryco@missouri.edu](mailto:hickoryco@missouri.edu)

Web: <http://extension.missouri.edu/hickory>

Facebook: MU Extension in Hickory County

UNIVERSITY OF MISSOURI  
 **Extension**  
Hickory County



May/June 2018

HICKORY COUNTY

## LOCAL



A child at the  
Farmers Market  
enjoying Astronaut  
Pudding.

### Hickory County Farmers Market

The Hickory County Farmers Market is in its' third year of operation, Farmers Market vendors and participants enjoy the 100' x 40' metal building where vendors have cover, electricity, water, lighting, and ventilation for their stands. There is a fully functional commercial kitchen and bathroom for use, which offers opportunities for the community including MU Extension cooking demonstrations.

Mary enjoys visiting with the Farmers Market patrons. She has made Missouri Berry Fruit Salad, Astronaut Pudding, and Strawberry Salsa for the patrons to watch and try. Mary tries to promote recipes that go with the market produce available. She also has information on food preservation and takes gardening, plant, and other questions back to other MU Extension professionals to answer and follow up.

Mary is at the market on the first and third Fridays of each month. So far this year, she estimates that she has talked with 110 patrons. Come see her on Friday, June 15 to learn how to make Ice Cream in a Bag and try Blueberry Ice Cream Muffins.

## REGIONAL

### Our Summer is fun packed!

Here in the West Central Region we are quickly preparing for our 4-H Camp season. We participate in 4 4-H camps spread throughout the region or in neighboring counties. So there are plenty of opportunities for our 4-Hers to participate in a camp if there so desire. We will have approximately 400 of our local 4-Hers go to camp this year.

Most people don't know that we also have what is called the Mid-Missouri Horse Circuit. Each weekend 4-H horse enthusiasts participate in a horse show located in a different county each week allowing more youth to learn, participate and just have fun with their horses, their friends and family. If you are located in the southern part of the region and are interested in the horse circuit contact your local 4-H Youth Specialist.

I would also like to welcome two new employees. Sarah Wikoff started May as Nutrition and Health Specialist in Butler and Raysha Tate started June 1 as Ag Business Specialist in Osceola. Both of these young ladies are excited to part of our Extension family and we look forward to working and helping them serve the citizens in western part of the region.

## STATEWIDE

### Message From Marshall Stewart

Graduations are over and the summer session has yet to start, so Columbia is quieter than usual. Since MU Extension runs on a 12-month schedule, times like this provide an opportunity to catch up.

While it seems like I spent the better part of the last five months attending meetings all over the state, along the way I had the privilege of leading a group through a leadership series.

It brought into focus the need to clarify the results our organization seeks and for everyone in the organization to understand the value of a sense of unity, but not sameness. Yes, we are all in this together, but there must be room to respond as unique situations arise.

In the coming weeks I will map out indicators that we will look to as we gauge our success. As I do so, I will share.

As always, feel free to contact me with ideas or concerns. Thank you for your commitment to Missouri.



**KEY NUMBERS**

| Program                    | Number of Contacts |
|----------------------------|--------------------|
| Client Consultations       | 92                 |
| Presentations Given        | 122                |
| Presentations Participants | 465                |
| FNEP Nutrition Visits      | 105                |
| FNEP Participants Taught   | 2,001              |
| Telephone Inquiries        | 95                 |
| Walk-In Inquires           | 83                 |
| Hay & Soil Tests           | 12                 |
| Newspaper Articles         | 22                 |

**UPCOMING EVENTS**

- Blooming Hickorys 4-H Meetings – 4<sup>th</sup> Monday of each month
- Hickory County Master Gardeners Meetings – 4<sup>th</sup> Thursday of each month at 1:30pm
- Hickory County 4-H Exhibit Day & Livestock Show – July 14 at 10am
- Polk County Cattlemen's Meeting – June 14<sup>th</sup>
- Pesticide Applicator Training in Springfield – July 23<sup>rd</sup>
- Warm Season Grass Grazing School in Buffalo – July 31<sup>st</sup>
- Hickory County Cattlemen's Bus Tour to Kansas & Oklahoma – August 6-9
- Hickory County West Central Grazing School – September 26-28

**DID YOU KNOW?**

In FY 2017, Missouri 4-H programs reached 190,300 young people in every corner of the state. More than 9,000 volunteers contributed on average 200 hours a year—worth nearly \$39 million.

**CONTACT INFORMATION**

**MU Extension in Hickory County**  
18715 Cedar Street  
Hermitage, MO 65668

Phone: 417-745-6767

Fax: 417-745-2324

Email: [hickoryco@missouri.edu](mailto:hickoryco@missouri.edu)

Web: <http://extension.missouri.edu/hickory>

Facebook: MU Extension in Hickory County

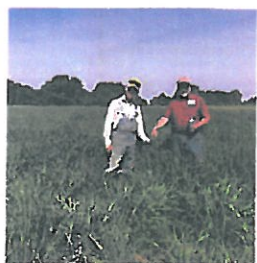
UNIVERSITY OF MISSOURI  
 **Extension**  
Hickory County



July/August 2018

HICKORY COUNTY

## LOCAL



Ron Locke of Long Lane and Terry Halleran during Pasture Walk in July

## Effects of the drought on forage systems

This year's drought has been very hard on our forage systems. Many have requested information on what to do in this drought. There are no good answers for this problem after the fact. Let's face it, the drought is on and growing additional forage without rainfall just will not happen. So now what? Plan for the next one... Ron Locke of Long Lane, Mo has believed in warm season grasses, in his rotational grazing system, for a while. This years has proven his point. The picture shown is a field of his in June, when most other cool season grasses are showing distress, his big bluestem, indiangrass, and switch grass is growing strong. Warm season grasses are a great defense for future drought.

Our other picture (right) shows us in a field assisting a local producer learning when and how to make haylage. The test on this project came back 48.60% Dry, 51.39 Moisture, 9.51 Protein, 51.90TDN, and 79 on RFV/Quality Standard. When compared to the hay baled in the same field from the same cutting, the hay tested better. Leading to the next question, which is better? The state beef nutritionist, Dr Eric Bailey, stated hay will usually out test haylage but the real advantage to haylage is two fold: 1. You can put it up wet earlier and avoid getting it rained on & 2. You will get less waste when feeding it as haylage.

Terry and local producer Chuck Dobson testing haylage.



## REGIONAL

## Summer 2018 Busy and Hot

Much of the region has had limited rain this summer causing many of our farmers to think out of the box for feed and hay supplies for their cattle and other livestock. The recent rains have helped but the general need is still far from satisfied. To help producers respond our agriculture specialists can help conduct quick nitrate tests on forage samples brought into the local office.

We have scheduled interviews for a couple of local positions that are open and currently accepting applications for 6 other positions in the region. Hopefully soon we will be able to announce some new hires throughout our region. I thank the local extension councils for their continued patience while we move forward with several of our open positions and I especially continue to thank the support of the local county commissioners and others who so faithful support our programming efforts.

If you have questions or additional comment please feel free to call me.

Wayne Prewitt, Regional Director West Central Region

## STATEWIDE

## Message From Marshall Stewart

Summer is quickly passing and soon students will fill the Mizzou campus with energy. Between now and then, I'm placing attention on an effort mentioned back in May — mapping out three to five clear indicators for success. Finding clear indicators that all can look toward is a challenge worth tackling. When the entire organization is aligned with common purpose, great things happen.

To start, I pulled together a small task force. They've accepted the challenge of identifying common results related to the economy, education and health that will identify our way forward.

A blue-ribbon panel will further refine, clarify and prepare a document to be shared with the larger MU Extension community. A final edition that all can rally around will be ready around Oct. 1.

This may seem like a lot of hoops to jump through. However, as shared before, sometimes you must slow down before you speed up. Come fall, we will be moving quickly with a clear and unifying purpose.

As always, I greatly appreciate your support.



## KEY NUMBERS

| Program                    | Number of Contacts |
|----------------------------|--------------------|
| Client Consultations       | 65                 |
| Presentations Given        | 71                 |
| Presentations Participants | 1101               |
| FNEP Nutrition Visits      | 48                 |
| FNEP Participants Taught   | 1064               |
| Telephone Inquiries        | 153                |
| Walk-In Inquires           | 72                 |
| Hay & Soil Tests           | 4                  |
| Newspaper Articles         | 16                 |

## UPCOMING EVENTS

- Blooming Hickorys 4-H Meetings – 4<sup>th</sup> Monday of each month
- Hickory County Master Gardeners Meetings – 4<sup>th</sup> Thursday of each month at 1:30pm
- Food Demonstrations at Farmers Market each Friday
- Hickory County Master Gardeners sponsoring Landscaping Class – August 23 at 1pm
- Master Gardener program offered in Laclede County – September 6 (Thursdays for 9 weeks)
- Drought Survival Meeting for Cattlemen at McCarty Senior Center – September 7<sup>th</sup>
- Farm Lease Program in Osceola – September 17
- Hickory County West Central Grazing School – September 26-28
- MU Summit in Columbia – October 23-25
- Blooming Hickorys 4-H Recognition Night – December 8

## DID YOU KNOW?

The MU Conference Office, part of MU Extension, provides full-service meeting management for noncredit MU campus and extension educational programs. In FY 2017, the MU Conference Office organized 72 conferences for more than 20,000 people.

## CONTACT INFORMATION

**MU Extension in Hickory County**  
18715 Cedar Street  
Hermitage, MO 65668

Phone: 417-745-6767

Fax: 417-745-2324

Email: [hickoryco@missouri.edu](mailto:hickoryco@missouri.edu)

Web: <http://extension.missouri.edu/hickory>

Facebook: MU Extension in Hickory County

UNIVERSITY OF MISSOURI  
 **Extension**  
Hickory County

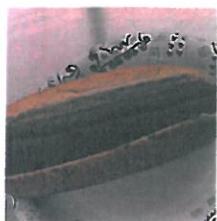


September/October 2018

HICKORY COUNTY

## LOCAL

### Carrot Dogs at Farmers Market



What are carrot dogs? They look like a carrot, but smell and taste like a hot dog.

The Hickory County Health Department in collaboration with MU Extension Hickory County had a Car Seat Safety Event on Saturday, September 29, 2018. Mary Sebade, CES Health and Nutrition, made 84 carrot dogs. What are carrot dogs? They look like a carrot, but smell and taste like a hot dog. Carrot dogs are full of flavor and are perfect for anytime. They take 30 minutes to make and cook. They can be made in an instant pot. Mary served these one night at the Hickory County Farmers Market where they were a hit with all in attendance.



## REGIONAL

Whew! Summer activities are slowing down and school has started. University of Missouri Extension is gearing up for the fall. Our Nutrition Program Associates are hard at work bringing nutrition programming to the many of the schools throughout the region. In our region we had 32 gardens producing over 700 pounds of produce and helping demonstrate to our children the benefits of healthy eating.

We all know the drought continues and as people struggle with finding adequate feed for the cattle our ag specialists are busy testing many forage samples for nitrates. If you have questions or concerns of the safety of a forage be sure to take a sample in to the local extension office and they can help determine if nitrates exist. We are also hosting drought management meetings across the region helping producers think through all of the available options.

It's about 4-H enrollment time. October 1<sup>st</sup> is when enrollment opens so it is an exciting time as people finish up project reports and we prepare to begin a new year. We have had a couple of counties who are adding a Youth Program Associate to the office to ensure their 4-H program continues to grow. If any county can come up with 50% of the salary and benefits we are interested in partnering to place more YPA positions out in the field. Give me a call and we can chat about the options.

If you have questions or additional comments please feel free to call me.

Wayne Prewitt, Regional Director West Central Region

## STATEWIDE

### Message From Marshall Stewart

The university is back in session. Freshman enrollment is up more than 13 percent and the Mizzou campus is once again buzzing with activity.

Mizzou is observing MU Extension Day on Sept. 8, when the Tigers take on Wyoming. A block of half-price tickets on the lower level are reserved for 4-H and MU Extension. Visit [fevo.me/muextensionday](http://fevo.me/muextensionday) to buy tickets.

This event is one example of how the university has reembraced extension over the past two years. Another example occurred today when Chancellor Cartwright [announced the formation of the Office of Extension and Engagement](#). While county offices will still be branded as MU Extension centers, this announcement acknowledges our efforts to make the entire breadth of the university more accessible to Missourians throughout the state.

I believe we are entering one of the most exciting times for the university and the people it serves. I appreciate your support and thank you for all you do. Go Tigers!



**KEY NUMBERS**

| Program                    | Number of Contacts |
|----------------------------|--------------------|
| Client Consultations       | 91                 |
| Presentations Given        | 52                 |
| Presentations Participants | 860                |
| FNEP Nutrition Visits      | 23                 |
| FNEP Participants Taught   | 1,049              |
| Telephone Inquiries        | 138                |
| Walk-In Inquires           | 73                 |
| Hay & Soil Tests           | 7                  |
| Newspaper Articles         | 22                 |

**UPCOMING EVENTS**

- Blooming Hickorys 4-H Meetings – 4<sup>th</sup> Monday of each month
- Hickory County Master Gardeners Meetings – 4<sup>th</sup> Thursday of each month at 1:30pm
- Beekeepers Meetings – 2<sup>nd</sup> Tuesday of each month at 7pm
- Food Demonstrations at Farmers Market each Friday through October
- Master Gardener program offered in Hickory County – October 1st (Mondays for 9 weeks)
- MU Summit in Columbia – October 23-25
- Winter Cattle Feeding Meeting at Extension Office – October 29<sup>th</sup> 1pm and 7pm
- Cooking Matters for Adults – Tuesdays 5:30-7:30pm (October 30-December 4)
- Blooming Hickorys 4-H Recognition Night – December 8

**DID YOU KNOW?**

Last year our NPA's educated over 19,000 people across the region. Part of their education program involves developing school and community gardens and then using those gardens as part of their educational programming.

**CONTACT INFORMATION**

**MU Extension in Hickory County**  
18715 Cedar Street  
Hermitage, MO 65668

Phone: 417-745-6767

Fax: 417-745-2324

Email: [hickoryco@missouri.edu](mailto:hickoryco@missouri.edu)

Web: <http://extension.missouri.edu/hickory>

Facebook: MU Extension in Hickory County

UNIVERSITY OF MISSOURI  
 **Extension**  
Hickory County



November/December 2018

HICKORY COUNTY

## LOCAL



The 4-H members and Clover Kids with the awards and Super 4-H'er t-shirts they earned for their year of 4-H work.

## 4-H Recognition Night

The annual 4-H Recognition program is a celebration of the hard work and commitment each 4-H member has demonstrated in their project work over the past year. 4-H members earn medals, Super 4-H'er t-shirts, project pins and year pins by completing and turning in the 4-H project report forms. Some of the skills reported as learned were "how to better take care of my animals", "how to run a club meeting", "how to be a club officer", and "how to speak in front of a group and not be so scared."



Neili Hammer receiving her 5 year volunteer certificate and a small gift for being the Blooming Hickorys 4-H Club Leader.

## REGIONAL

Fall rains have finally come and grass is growing, lots of hay was baled and our ag specialists are busy hosting series of programs around the region helping producers better understand their feeding options through the winter. For many, hay supplies are short and quality is questionable so better understanding alternatives is important to maintain profitability.

4-H enrollment is now open and early reports suggest that enrollment is going well and several counties expecting several new families and clubs being formed. Enrollment in our 4-H programs across the state is up as well as the number of volunteers showing our impact on the lives of our youth. It's the support of the community, the volunteers and families that makes the 4-H program so successful and we so much appreciate everyone helping our youth achieve their full potential.

We continue to hire people to fill our vacant positions. Hiring is going well and the great people with such diverse backgrounds will have a very positive impact on the communities and populations we serve. As the new employees come on board it offers a great opportunity to stop by and visit with our faculty and staff to see the new faces and discuss potential programs.

I will be visiting with the county engagements specialists in each county to schedule a time when I and someone from campus administration can come and visit with each county council during the next 4 months. We want to visit with the councils to better understand their needs and to share with them changes and continued evolution of our staffing plans and changing procedures and policies. I look forward to meeting everyone again in the next few months.

If you have questions or additional comments please feel free to call me.

Wayne Prewitt, Regional Director West Central Region

## STATEWIDE

## Message From Marshall Stewart

Efforts to engage and extend beyond the MU campus have gained traction in recent months. Last week, another significant engagement milestone occurred. This time it was at the University of Missouri System level. A \$10 million investment in engagement that taps all UM System campuses was announced as part of a \$260 million investment in innovation to advance Missouri.

Deeper engagement between the people of Missouri and all four campuses will make a deeper impact on advancing Missouri. This is exciting!

A renewed dialogue to connect with Missourians has been key to this positive change. Much like personal relationships, university relationships are strengthened when both parties are connected and committed.

I encourage you to [learn more about this latest announcement](#) and share with others how the University of Missouri is committed to being the University for Missouri. Let's keep the dialogue going.



**KEY NUMBERS**

| Program                    | Number of Contacts |
|----------------------------|--------------------|
| Client Consultations       | 91                 |
| Presentations Given        | 24                 |
| Presentations Participants | 263                |
| FNEP Nutrition Visits      | 23                 |
| FNEP Participants Taught   | 1,049              |
| Telephone Inquiries        | 118                |
| Walk-In Inquires           | 89                 |
| Hay & Soil Tests           | 56                 |
| Newspaper Articles         | 18                 |

**UPCOMING EVENTS**

- Blooming Hickorys 4-H Meetings – 4<sup>th</sup> Monday of each month
- Hickory County Master Gardeners Meetings – 4<sup>th</sup> Thursday of each month at 1:30pm
- Beekeepers Meetings – 2<sup>nd</sup> Tuesday of each month at 7pm
- Private Pesticide Applicator Training – February 4<sup>th</sup> Hickory County (Location TBD)
- Tai Chi at Health Dept – January (TBD) – will publicize when finalized

**DID YOU KNOW?**

Last year our NPA's educated over 19,000 people across the region. Part of their education program involves developing school and community gardens and then using those gardens as part of their educational programming.

**CONTACT INFORMATION**

**MU Extension in Hickory County**  
18715 Cedar Street  
Hermitage, MO 65668

Phone: 417-745-6767

Fax: 417-745-2324

Email: [hickoryco@missouri.edu](mailto:hickoryco@missouri.edu)

Web: <http://extension.missouri.edu/hickory>

Facebook: MU Extension in Hickory County

UNIVERSITY OF MISSOURI  
 **Extension**  
Hickory County