

UNIVERSITY OF MISSOURI EXTENSION

Crawford County

2024

Annual Report



61 E. Hwy. 8, Suite 205
PO Box 190
Steeleville, MO 65565
573-775-2135
crawfordco@missouri.edu



Extension

University of Missouri

an equal opportunity/ADA institution



Office of Extension
and Engagement
University of Missouri

Vice Chancellor's Office
108 Whitten Hall
Columbia, MO 65211
PHONE 573-882-2394
EMAIL cchiggins@missouri.edu

December 2024

Dear county commissioners, elected leaders and friends of MU Extension and Engagement,

As we reflect on the past year, I want to express my deep gratitude for your support of MU Extension and for your partnership in enhancing the lives of Missourians.

Your support for MU Extension fuels Missouri's agriculture, strengthens families, prepares our youth and promotes the health, well-being and vitality of our communities. Over the past year, our programs have focused on addressing key needs throughout the state:

- **Expanding access to 4-H:** To make 4-H more accessible, we've introduced more in-school and after-school clubs, reducing barriers and creating opportunities for young Missourians to develop essential skills and leadership abilities.
- **Supporting agriculture and land stewardship:** We're addressing critical issues such as succession planning for family farms, rural mental health, agricultural business management and land stewardship. These initiatives are helping Missouri's farmers plan for the future and preserve the health of our land for future generations.
- **Advancing health initiatives:** Our team of community health field specialists, covering every region of the state, works directly with local leaders to assess health needs and bring UM System resources and expertise to these communities, supporting healthier lives and stronger communities.
- **Promoting economic development:** MU Extension is helping to create economic opportunities by working with individuals, supporting businesses in their growth and collaborating with communities to enhance local vibrancy. Through these efforts, we help bring new jobs, skills and possibilities to Missourians across the state.
- **Providing essential training:** Our continuing education programs prepare Missouri's firefighters and health care workers to meet the demands of their roles with the latest skills and knowledge, ensuring they are well-prepared to serve our communities.

As you read through this annual report, I hope you feel as proud as I do of the accomplishments we've achieved together. The dedication and professionalism of MU Extension's faculty and staff are inspiring, and I am grateful to work alongside them—and each of you—as we make Missouri a stronger, healthier and more vibrant place. Thank you for your continued support and partnership. Together, we are serving Missouri by delivering the University *for* Missouri.

Warm regards,

Chad Higgins, PhD
Vice Chancellor, MU Extension and Engagement
Chief Engagement Officer, UM System

Who we are

Faculty and staff

Gatlin Bunton

Director, Wurdack Extension and Education Center
Field Specialist in Agronomy

Presha Earney

Office Support Staff

Tara Hamilton

Bookkeeper/Office Support Staff

Tammy Zuzack

Nutrition Program Associate

Kendra Graham

Extension Engagement Specialist

Matthew Herring

Regional Director – East Central Region

Other Specialists serving Crawford County:

Maria Calvert

Field Specialist in Human Development

Mark Christian

Small Business Development Center Business Specialist

Gina Corce

Business Development Consultant

Kevin Crider

Cooperative Feral Hog Outreach Educator

Charles Ellis

Field Specialist in Agricultural Systems Technology

Sarah Higgins

Field Specialist in Natural Resources

Rachel Hopkins

Field Specialist in Agricultural Business

Kate Kammler

Field Specialist in Horticulture

Eric Meusch

Field Specialist in Livestock

Rachel O'Halloran

Field Specialist in Nutrition and Health

Emily Poncher

Field Specialist in Community Health

Julianna Thrasher

Field Specialist in 4-H Youth Development

McKenzie Tuttle

Senior Program/Project Support Coordinator

Ray Walden

Field Specialist in Community Development

Council members

Jessica Driskill, Chairman

Kim Gibbs, Vice-Chairman, Farm Bureau

Susan Coleman, Secretary

Jessica Pinnell, Treasurer

Jared Boast, County Board of Commission

Jay Coleman

Debbie Martin, City of Cuba

Kelli Rapp

Dana Richter

Wayne Richter

Tracy Staples

Michael Zuzack



Extension
University of Missouri

County Commissioners

Steve Black, Presiding Commissioner

Rob Cummings, Commissioner District 1

Jared Boast, Commissioner District 2

Budget and more

Appropriations budget

Income

County Appropriations	68,000
Total Income	68,000

Expenses

Salaries/Benefits	41,740
Travel	5,501
Telephone	1,467
Office Supplies/Service	1,670
Insurance	135
Capital Repairs	2,281
Total Expenses	52,794

Crawford County partners

- Amazing Grace Community Church
- Bourbon, Cuba and Steelville Public School Systems
- City of Cuba
- Crawford County Commission
- Crawford County Cattlemen Association
- Crawford County Fair Board
- Crawford County Food Pantries
- Crawford County WIC/Health Department
- Cuba Church of Christ
- Farm Bureau
- Meramec Regional Planning Commission
- Public Libraries
- Senior Centers
- Steelville Chamber of Commerce
- Steelville Presbyterian Church
- STE Communications
- Wurdack Extension and Education Center

New office location

In May 2024, our office moved to a new location with the support of the Crawford County Commission. We are now located at 61 E. Hwy. 8, Suite 205, Steelville, MO 65565

MU Extension is a unique funding partnership.

Extension funding is a three-way partnership of federal, state and county government. Federal and state money, through the University of Missouri system, pay professional staff salaries, training costs, computers and communication equipment. County funds support the local office, secretarial and youth assistant salaries, staff mileage and council expenses.

The Crawford County Extension Council, faculty and staff would like to express our appreciation to the Crawford County Commissioners for their continued support of extension programs.



Local Support

Did you know you can donate directly to Crawford County Extension with a gift to be used immediately or as an endowment contribution for long term efforts. Monies put into the endowment are left forever to earn interest with the county office benefiting each year. You can also direct your donation to a specific program such as 4-H or Master Gardeners.

Crawford County



University of Missouri System

COLUMBIA | KANSAS CITY | ROLLA | ST. LOUIS

UM System Footprint in the county in 2024



FY24 county students

84 students

- 70 Undergraduates
- 14 Graduate and professional students
- 59 Full-time students
- 25 Part-time students
- 35 Pell grant recipients (aid year 2024)



County employees and retirees

52 people employed by UM

- 47 Campuses
- 3 MU Health Care (includes additional employees gained via the recent integration of Capital Region Medical Center)
- 2 UM System

19 UM retirees and beneficiaries

UM salary and retirement income: \$2.6 million

UM state tax revenue: \$76,512

UM federal tax revenue: \$391,188



County alumni

Selected school alumni

- 6 Medicine
- 23 Nursing
- 18 Health Professions
- 1 Dentistry
- 1 Pharmacy
- 1 Optometry
- 6 Veterinary Medicine
- 39 Agriculture
- 84 Engineering
- 5 Law

Alumni teaching K-12

- 35 teachers
- 14.4% of all district teachers
- 2 principals and administrators
- 14.3% of all district principals and administrators



County breakdown

MU

- 23 students
- 172 alumni
- 10 employees

UMKC

- 4 students
- 13 alumni
- 0 employees

Missouri S&T

- 44 students
- 162 alumni
- 37 employees

UMSL

- 13 students
- 148 alumni
- 0 employees



County population: 22,890



County services provided

Health care (FY24)

- 313 in-state patients seen at MU Health Care, with \$80,289 of uncompensated care
- 7 in-state patients seen at UMKC School of Dentistry with a statewide average of \$52.57 per patient in uncompensated care
- MU Health Care's Missouri Telehealth Network recorded 415 visits to 224 patients having ZIP codes associated with the county

Extension (2023)

- 1,998 Total educational contacts from MU Extension to residents of the county, including:
- 358 contacts related to productive farming, better gardening, and managing natural resources
- 936 contacts related to healthy eating and aging, strengthening families, personal finance, or youth development
- 257 contacts related to starting businesses, developing community leaders, or renewing the local economy



County properties and offices

Wurdack Farm

MU Extension in: Crawford County

Crawford County



University of Missouri System
COLUMBIA | KANSAS CITY | ROLLA | ST. LOUIS

UM System Statewide Footprint

Economic and Community Development Highlights

- In FY23, Business Development Specialists worked with small businesses and entrepreneurs statewide to create or retain 98,527 jobs.

\$3.1
billion

For every dollar invested from 2019 to 2021, the MU Extension Business Development Program has returned \$133 in economic impact for its clients by increasing sales more than \$1.6 billion. For a total impact of \$3.1 billion, the program has generated more than 37,000 jobs and attracted nearly \$451 million in capital investments and \$1.5 billion in government contracts.

- Between FY18 and FY23, UM System brought Missouri more than \$1.58 billion in federal and private research funds, funded primarily from outside the state, but spent within the state.



In FY24, UM System was issued 29 patents and filed 69 new U.S. patent applications.

- In FY24, the UM System awarded 707 design and construction project contracts throughout Missouri, for a total investment of \$287.3 million in the state.



In FY24, to improve access to medical and health related services, MU Health Care's Missouri Telehealth Network's Show-Me ECHO program provided 16,687 hrs of case-based instruction to 3,113 learners located in 105 of 114 Missouri counties and the city of St. Louis.

Education and Training Provided



40,542 police, fire fighters, and medical professionals attending continuing education (2023)



Agriculture and natural resource programs served 369,077 farmers and related businesses (2023)

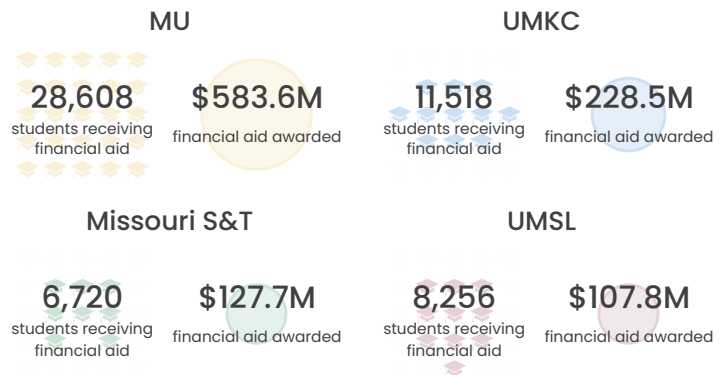


210,577 youth and stakeholder educational contacts in 4-H clubs, schools, camps and other programs (2023)

Education Highlights

FY24 Financial Aid Awards

In FY24, 69.7% of the UM System's 79,014 students received financial aid totaling \$1.048 billion



UM System's MOREnet (Missouri Research and Education Network) provides internet connectivity, access, support and training to 58 higher education institutions (230,000 students), 484 K-12 school districts (830,000 students) and 134 public libraries (serving nearly 3 million Missourians) in 2023.

- UM System awarded 50.5% of the 31,689 Bachelor's or higher degrees awarded by Missouri four-year public institutions in 2023-24.
- UM System awarded 35.0% of the 1,776 research doctorates and 26.8% of the 3,796 professional doctorates awarded by Missouri public and not-for-profit private institutions in 2023-24.
- In FY24, UM System's \$30.7 million in National Science Foundation (NSF) grants represented 96.9% of all NSF grants made to Missouri public colleges and universities.
- In 2024, over 12,400 Missourians accessed mobroadband.org, part of the UM System Broadband Initiative which helped the statewide build-out of high-speed internet infrastructure.

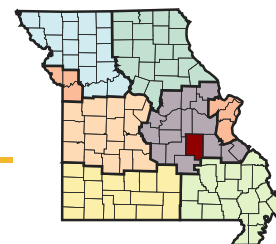
Supporting the University of Missouri is an investment in the future of Missouri.

The university advances Missouri citizens and communities through its mission of teaching, research, public service, and economic development across our four campuses and University of Missouri Extension.

Prepared in December 2024, based on the best available and most recent data. Data Sources include: Missouri Office of Administration • UM IR • MU Institute for Public Policy • Center for Applied Research and Engagement Systems (CARES) • MU • UMKC • Missouri S&T • UMSL • UM System • UM Health Care • MU Extension • US Census Bureau • US Dept. of Health and Human Services • National Science Foundation



Missouri Grand Challenges: Local Solutions



CRAWFORD COUNTY

Knowing Missouri's Needs

MU Extension asked Missourians to share the greatest challenges they and their communities face.

We heard that feedback and made big changes in the way we work with council and local partners to improve lives. Locally, a network of county engagement and subject matter specialists now share MU's knowledge, research and engagement, targeting programs, information and assistance in:

- agriculture and environment
- youth and family
- business and community
- health and safety

For each grand challenge, MU Extension and Engagement targets a specific gain by 2023:



Economic opportunity

Increase MU Extension and Engagement's economic impact to the State of Missouri from \$1 billion to \$1.5 billion overall, and from \$88 billion to \$100 billion in agriculture, the top economic sector



Educational access and excellence

Increase participation in postsecondary education from 66% to 70%



Health and well-being

Improve Missouri's health ranking from 40th to 35th in the nation

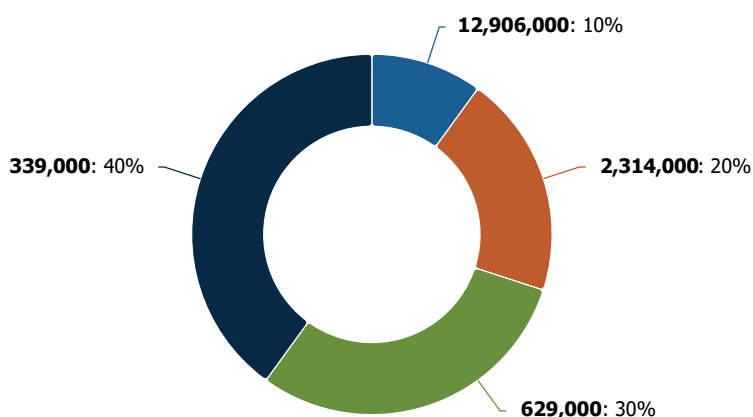
Knowing Local Challenges



CHALLENGE 1: Economic Opportunity: *Agricultural Economics*

Leading Agricultural Products

Total Rank (Sales): \$10



Data Source: US Department of Agriculture, National Agricultural Statistics Service, [Census of Agriculture](#). 2022.

Net Farm Income

Net farm income (total sales, government payments, and other farm-related income minus total farm expenses) reflects the strength of the local agricultural community and can be an important measure for lenders and policy makers. The report area had a combined net farm income of \$-5,241,000 in 2017, an average of \$-9,020 per farm. This is below the statewide average farm income of \$56,606.

Report Area	Total Farms	Average Farm Income
Crawford	581	\$-9,020
Missouri	87,887	\$56,606

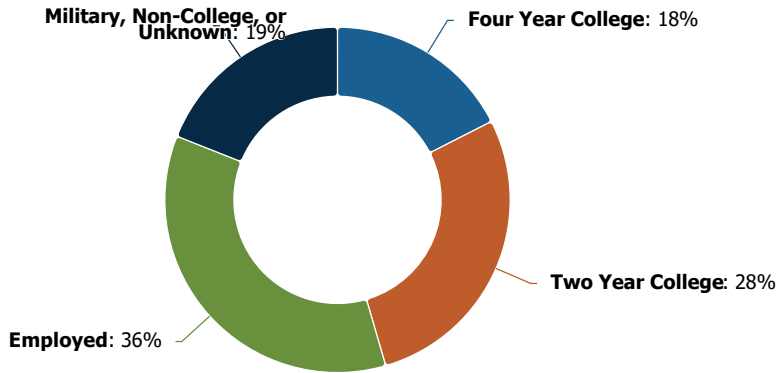
Data Source: US Department of Agriculture, National Agricultural Statistics Service, [Census of Agriculture](#). 2022.



CHALLENGE 2: Educational Access and Excellence: *College and Career Readiness*

Post High School Report

The 12-month post-graduation activity of recent high school graduates can inform communities about postsecondary education, career readiness, and characteristics of the future workforce. In 2022, of 200 graduates surveyed in the report area, 35 went to a four-year college, 56 to a two-year college, 71 directly entered the job market. The remaining 38 are reported as in the military, not in college, or unknown.



Data Source: [Missouri Department of Elementary & Secondary Education](#). 2022.



CHALLENGE 3: Healthy Futures: *Access to Care*

Mental Health Care Providers

Mental health is a critical public health issue worldwide. Access to mental health services is a challenge across Missouri, which ranks 46 out of 51 states in provider access. In the report area there are approximately 67 credentialed professionals providing mental health care to serve the area's 23,056 residents. The patient-provider ratio in the report area is 344 to 1, which means there is 1 provider for every 344 persons. The ratio of persons to providers in the report area is lower than the state average of 346:1, which means there are more providers per person in this area.

Ratio (Population to Providers)

344:1

Crawford

Missouri

346:1

Primary Care Providers

Older adults make up a historically large percentage of the U.S. population and meeting the healthcare needs of an aging population can be challenging. In the report area, there are approximately 1 primary care physicians (MDs and DOs) to serve the area's 4,659 residents over the age of 65. The patient-provider ratio in the report area is 4,659:1, which means there is 1 provider for every 4,659 older adults. The ratio of adults to providers in the report area is higher than the state average of 250:1, which means there are fewer providers per person in this area.

Rate per 100,000 Seniors

21.50

Crawford

Missouri

399.40

Data Source: Centers for Medicare and Medicaid Services, [CMS - National Plan and Provider Enumeration System \(NPPES\)](#). December 2024.

Data Source: US Department of Health & Human Services, Health Resources and Services Administration, [HRSA - Area Health Resource File](#). 2021.



CHALLENGE 4: Agricultural Growth & Stewardship: *Agricultural Economy*

Jobs Derived

Missouri has a diverse agriculture industry, strong in crops and livestock, as well as food and forestry processing industries. These industries remain a significant part of Missouri's economy, supporting more than 1 in every 10 jobs, on average. In 2021, agriculture, forestry, and related industries in Missouri were estimated to contribute: 456,618 jobs, \$93.7 billion in output and \$31.8 billion in household income. [Learn more about Missouri Agriculture's Economic Impact.](#)

Percent of Jobs Derived from Agriculture

19.8%

Crawford

Missouri

23.55%

Data Source: Missouri Department of Agriculture, [Missouri Agricultural and Small Business Development Authority](#). 2021.

Value Added

Value-added agriculture refers to production, manufacturing, marketing or other services that increase the value of primary agricultural commodities. In 2021, the total value-added derived from agriculture, forestry and related economic activity was an estimated \$34.9 billion. Meat processing, food processing, animal and pet food manufacturing, and crop production and related industries are Missouri's top value-added products: \$9.5 billion and 155,425 jobs from livestock production and related industries alone. [Learn more about Missouri Agriculture's Economic Impact.](#)

Percent of Total Value Added from Agriculture

12.6%

Crawford

Missouri

21.98%

Data Source: Missouri Department of Agriculture, [Missouri Agricultural and Small Business Development Authority](#). 2021.



MU EXTENSION **Serves MISSOURI and Delivers MIZZOU** through credible statewide programs

Missouri 4-H for ages 8 – 18



Community clubs are organized by volunteer club leaders and teams of recognized volunteers. Members attend club meetings, elect officers, enroll in projects and plan learning and community service activities. Some clubs opt to be single-project clubs, where all members focus on the same project.



4-H's Leadership and Civic Engagement programs foster understanding, confidence and decision-making skills to empower youths to become informed and active young citizens. 4-H civic engagement initiatives prepare young people to become future leaders by engaging them in programs where they have voice and influence.



4-H Natural Resources programs employ hands-on activities in climate science, environmental sustainability, renewable energy, sportfishing and wildlife conservation. The **Shooting Sports program**, which teaches marksmanship, safe firearm use, hunting and archery principles, is a prime illustration of how 4-H programs promote holistic youth development and responsible citizenship. Supported by caring adult leaders, these programs offer opportunities to cultivate life skills, self-worth and conservation ethics.



Legend



Agricultural Growth & Stewardship



Economic Opportunity



Educational Access & Excellence



Health & Well-Being

Crawford County

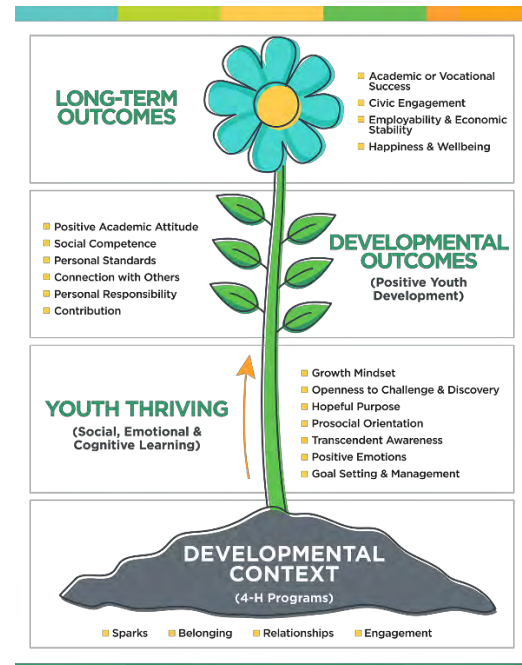
Missouri 4-H

Local Impact

A community of 341 youth building life skills, contributing to their community, and becoming college and career ready.

1 in every 7 Crawford County youth under the age of eighteen participated in a MU Extension 4-H Youth Development program in 2024.

4-H Youth Development programs are guided by the 4-H Thriving Model, which is a framework to illustrate the connection between high quality 4-H programs and indicators of youth thriving with developmental outcomes which ultimately leads to the long-term outcomes of youth who experience academic or vocational success, are civically engaged, are employable and economically stable, and experience happiness and wellbeing.



4-H Members

4-H programs are also grounded in the belief that youth learn best by doing. Through hands-on projects like science, health, agriculture, and civic engagement in a positive environment, youth receive guidance from adult mentors and are encouraged to take on proactive leadership roles. Youth have the opportunity to concentrate on one focus area, or they can try a variety of programs throughout their 4-H experience. Crawford County served youth through 11 community clubs, and 4 In-school 4-H Clubs offering long-term educational experiences in which members learn life skills such as decision-making, public speaking, and working with others.

- There were 341 youth reached through community clubs, SPIN clubs, in-school, and afterschool 4-H clubs in Crawford County during the 2023-2024 4-H Year.
- Over 200 4-H members were engaged in science related projects and experiences.
- Collectively youth participated in 3,135 hours of community club work in Crawford County.
- Over 5,567 hours of community service projects were completed by 4-H members and volunteers during the 2023-2024 4-H Year.

4-H members have demonstrated learning through the following activities:

- 1,219 exhibits at the 2024 Crawford County Fair from 301 4-H members and FFA members, who are also supported through youth programming.
- Crawford County youth exhibited over 15 exhibits in the 4-H Building and livestock shows of the Missouri State Fair.
- 2 members participated in the State 4-H Teen Conference, which offered youth a fantastic opportunity to experience being developing leaders in 4-H. This event provides a safe and enjoyable campus experience where youth can enhance their skills and forge new friendships.

Crawford County

Missouri 4-H

Local Impact

- Crawford County was represented at State 4-H Congress by Thomas Donnell. Delegates attended workshops covering diverse areas from science to leadership development that were complemented by experiences at the MU Student Center, social activities, and inspirational speakers. State Congress plays a vital role in helping these teens develop essential life skills, exploring potential career paths, nurturing leadership abilities, and fostering new friendships with peers from across the state.
- 3 youth from Crawford County Participated in skill development contests on the State level including State Meats Contest, State Livestock Judging, State Fashion Revue, State Poultry Day and State Public Speaking. Participation in these events helps youth to develop confidence and practice their decision making and public speaking skills through competitions tied to project areas they are passionate about.
- 2 youth from Crawford County participated in the State Shoot events.

4-H Clubs offer in-depth educational experiences in which members learn life skills such as decision making, public speaking, and working with others. Members learn by doing under this guidance of adult volunteers, who lead a wide variety of projects that support 4-H members in finding their SPARK. Club and project leaders also involve youth and teens in community service, leadership opportunities, and educational trips. 4-H project work and related educational experiences help youth explore interests in citizenship, communication, and leadership.

Crawford County members enrolled in a combined total of 1,078 projects in 2024. The top project areas included:

- Beef
- Poultry
- Embryology
- Arts and Crafts
- Country Cured Bacon
- Swine



4-H School Enrichment- Embryology

- There were 56 students from 3 classrooms who participated in the Hatching Chicks in the Classroom program in 2024.

During the Embryology program, students learn about the 21-day development occurring within a fertilized, incubated egg that can result in the hatching of a chick. Students identify the parts of an egg and discover what each part provides for the developing chick. Students learn how to tell if an egg is raw or boiled and explore the strength of the egg's shell providing protection to the developing chicks. Students review the necessity of hand washing due to potential contamination caused by salmonella in poultry and poultry products. Students often gain experience with death and disabilities. Throughout the experience, students are charged with rotating the eggs three times a day and are responsible for checking to make sure the incubator has water and is maintaining the correct temperature. Once the chicks hatch, the students care for them, providing feed, water, warmth, and a calm environment.

Crawford County

Missouri 4-H

Profiles and Stories



Genifer Cape received the 2024 4-H Hall of Fame Award for Crawford County. She has been serving Crawford County 4-H for over 30 years. Genifer has dedicated countless hours not only to 4-H but the community as a whole.

The Missouri 4-H Hall of Fame honors extraordinary 4-H volunteers from around the state for their years of dedication to the 4-H program.



Mia Gebhart, Crawford County 4-H member, went to Japan in July 2024 with the 4-H Global Exchange Program.

She spent time in Tokyo with an exchange family and attended a camp.



The 4-H Leaders banquet was held during National 4-H Week on Tuesday, October 8, 2024.

This annual event is held to honor and celebrate the efforts of 4-H volunteers in Crawford County.



Crawford County

Missouri 4-H

Profiles and Stories



Crawford County 4-H members from Yadkin Creek 4-H Club attended a Steelville Fire Department safety presentation.



4-H members showing their market goats at the Crawford County Fair.



Impacts of Programming

Students practice life skills including decision making and responsibility, helping them to develop qualities that will shape their development into adults. Students are provided with the opportunity for a practical experience that connects with the core subjects of communication arts, math, science, and health.

Youth with hands-on experience with science are more likely to pursue science-related careers, which are critical to our county, state, national, and global economy. Students are conscious of the need to practice proper hand washing techniques to prevent the spread of illness and disease. Students also learn compassion and develop an understanding of how to accept individuals with disabilities, as well as how disabilities can be compensated for.





MU EXTENSION **Serves MISSOURI and Delivers MIZZOU**
 through credible statewide programs
Agriculture and Environment



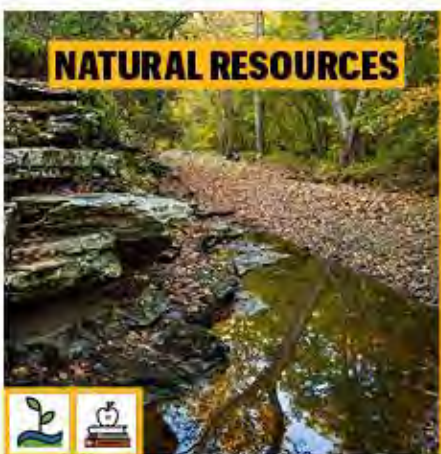
Missouri Grazing Schools teach management-intensive grazing by dividing large fields into smaller paddocks and systematically rotating livestock among them. Producers who attend the grazing schools learn how to reduce costs through improved livestock grazing and pasture management while getting insights into fencing, watering systems and grazing system design.

The annual impact of management-intensive grazing is estimated to be \$125 MILLION per year in Missouri.



The Missouri Integrated Pest Management Program (IPM), funded by USDA grants, has been an important extension program for more than 30 years. Mizzou IPM distributes articles, pest monitoring data and publications on how to improve the application of integrated pest management strategies and systems in crops. In addition, the new Soybean Growth Monitoring Report is released through IPM every two weeks during the growing season.

The MU Soil Testing Program delivers research-based nutrient and lime recommendations to more than 32,500 customers annually.



The Missouri Master Naturalist program is a community-based initiative for adults, supported by the Missouri Department of Conservation and MU Extension. It aims to create a group of knowledgeable volunteers who can offer education, outreach and service for the responsible management of natural resources in Missouri communities.

Additionally, the **Missouri Woodland Steward program** offers a short course that equips private landowners with knowledge of woodland management, helping them identify wildlife habitats, develop plans and connect with local natural resource experts.

Legend



Agricultural Growth & Stewardship



Economic Opportunity



Educational Access & Excellence



Health & Well-Being

Crawford County

Agriculture and Environment

Profiles and Stories



Teaching about pumpkins, squash, and gourds at the State Women in Ag Conference.

2024 HORTICULTURE AT A GLANCE

- **1961 direct contacts** through programming where participants are actively engaged in the learning process. Programs included home vegetable gardening, commercial organic specialty crop production, Garden Hour with MU Extension, bug bingo, plant diseases, pumpkin production, weed control, and many more.
- **610 requests** for horticulture information through calls, emails, walk-ins or site visits from **28 counties** and **4 states**.
- **2,310+** subscribers to the monthly Garden Spade newsletter with a **5%** increase in subscriptions during 2024. Topics include insects, weeds, landscape plants, trees, fruit, vegetables and much more.
- **36,700+** views of horticulture MU IPM YouTube videos for commercial producers.

KEY SUCCESSES

- ✓ Participants in pesticide safety programs increase their knowledge on pesticide handling, safety, restricted use, disposal, contamination, understanding labels, and guides.
- ✓ Plant identification can help determine edibility, control strategies, and possible issues for animals and people.
- ✓ Youth and adults learned about pest versus beneficial insects, and how to identify common insects by playing bug bingo.
- ✓ Participants in the hydroponic workshop learned basic terms, hydroponic systems, problem solving, and growing.
- ✓ Many soil tests results have excess phosphorus and potassium. Provide clients education on “loving” their plants to death—soil tests save clients money and the environment by not over applying fertilizers, manures, composts, & organic matter.



Bug Bingo is a fun way for youth and adults to learn insect identification, pests vs. beneficial insects.

Crawford County

Agriculture and Environment

Local Impact

Integrated Pest Management: Each year farmers, gardeners and homeowners find that they need information and education on pest management. Weeds, insects and diseases are the primary pest problems. People who have questions about pest management will call or bring in pests to the Extension Center for identification and management options.

Pest identification is the first step in developing a management plan. Pest management options are presented for the person to use to make decisions. For farmers and commercial vegetable growers, pest management can be important to profitability. For homeowners, pests may cause aesthetic concerns.



Wurdack Grazing School: Grazing management is important to maintain forage productivity and animal performance. At this event, farmers learned strategies for management intensive grazing, animal husbandry and the economics of grazing. 17 farmers attended the grazing school.

Soil Testing: Soil testing provides farmers, gardeners and homeowners information about the fertility of their soil and recommendations on how to fertilize and lime to improve plant growth. Farmers who use soil testing have reported that yields have improved because of using their soil test results. Other farmers have reduced fertilizer inputs due to soil tests showing that fertility levels are already high.

Gardeners and homeowners use soil testing to improve fruit and vegetable production or to make their lawn grow better. Soil testing is the first step in making the most of fertilizer application. Extension guides and personal consultations help people understand their soil test reports and how to use the information in the report.

Private Pesticide Applicator Training:

Farmers who wish to purchase or apply restricted use pesticides must go through training to obtain or renew a private pesticide applicator license. Approximately 7 farmers participated in private pesticide applicator trainings in Crawford county in 2024.

Farmers who participate in the training learn about pesticide labeling, personal protective equipment, environmental concerns, pesticide mixing and application, principals of pest control and pesticide formulations. The Missouri Department of Agriculture issues private pesticide applicator licenses.

Farmer Consultations and Site Visits:

Throughout the year farmers need timely answers and advice on various forage, weed management, and agronomic issues. Forage quality assessment was one of the most common reasons for one on one consultations in 2024. Weed control was top of mind for many producers throughout the summer. Through site visits, species identification and control method was easily determined.

Crawford County

Agriculture and Environment

Profiles and Stories



Wurdack Farm FFA Field Day

A variety of topics covering emerging ag production practices were presented of area FFA students by regional extension staff. Seven hundred twenty-five students attended from area high schools. Topics included:

- Phone apps and online resources for agriculture- Charles Ellis
- Bug bingo--Katie Kammler
- Alpha Gal Mammal Meat Allergy- Rachel O'Halloran
- Cool season annuals in a grazing system - Chrisee Brandle
- Growth promoting implants in the beef industry - Eric Meusch



The Missouri Show-Me-Select Replacement Halfer Program

strives to enhance beef herd reproductive efficiency, boost farm income and establish dependable sources of quality replacement cows in Missouri. The program brings in the power of animal genomics through an enhanced DNA-option, Show-Me-PLUS.



Since its inception more than **900 FARMS** have enrolled, with an estimated statewide impact of **\$200 MILLION.**

Ag Business

Covering Franklin, Gasconade, Osage, Maries, Miller, Pulaski, Phelps, Dent, Crawford, Washington, St. Francois and Ste. Genevieve Counties

Rachel Hopkins
Ag Business Specialist
573-438-2671
hopkinsrm@umsystem.edu



2024 AT A GLANCE

- **757** direct contacts in Beef Production Systems.
- **42** Lenders attended 'What Lenders Need to Know in 2025' in Jefferson City. Lenders heard from presenters discussing Market Outlooks, Policy Updates, MASBDA and Farmland Values and Rental Rates.
- **115** attendees at the Farm Tax Workshops held in December, both in-person and online. Rachel presented on Conservation Tax Implications for this workshop.
- **97** mid-Missouri farmers and ranchers attended the Central Missouri Forage & Beef Conference in Maries County.
- **22** local producers attended the Wurdack Producer Field Day in October to hear about local applicable topics.
- **6** attendees at the Succession Planning in Ste. Genevieve
- **66** producers attended three Grazing Schools where Financial Aspects of Grazing were taught.



The cannulated bovine is always a memorable time with the FFA students.

1678 DIRECT CONTACTS 3447 INDIRECT CONTACTS



Producer Field Day at Wurdack is a great way to reach local producers. The topic this year was the financial aspects of Native Grass.

KEY SUCCESSES

- ✓ **Monthly emails** out to subscribers letting them know of upcoming Extension programs in the region.
- ✓ Presented at the **Missouri Livestock Symposium** on the Beef Feeding Profitability Tool, G462.
- ✓ **Rural Safety Day** educates 3rd graders in Washington County of hazards they might encounter and thus preventing traumatic injuries.
- ✓ **Tax Workshops** educate participants on timely tax issues and how they can better manage tax liability.
- ✓ **Wurdack FFA Day** provides a learning opportunity for 9th graders on different fields in agriculture and exposes them to new ideas and concepts.



2024 AT A GLANCE

- Grazing Schools held in 5 counties taught approximately 110 livestock producers the fundamentals of Management Intensive Grazing. Improved grazing can reduce production costs, provide environmental benefits and improve drought resilience on livestock farms in Missouri.
- Show Me Quality Assurance events held in Dent, Phelps and Crawford Counties trained youth on proper care of livestock. Other youth-oriented activities included Ozark Cattlemen's Beef Day in Salem and the Wurdack Education Day event.
- The Value-Added Meats (VAM) team collaborated with Feedlot School team to develop the Direct Marketing Beef School held in West Plains. VAM also worked through the 2501 Program to conduct a hands-on chicken processing workshop for urban farmers in the St. Louis area



On-farm visits with producers addressing various issues is a key activity that takes place throughout the year.

KEY SUCCESSES

- ✓ In the Show Me Select Heifer Development Program the state-wide combined totals for the spring and fall sanctioned sales was 1,352 heifers sold with gross receipts of \$4,490,675.
- ✓ A total of 174 youth in 3 counties received Show Me Quality Assurance training, learning industry standards for food animal care and husbandry. This training is required for youth exhibiting livestock at county fairs and Livestock Expos.
- ✓ Participants in Missouri Grazing schools learned the basics in management intensive grazing, including soil and forage management, grazing system layout, livestock management and infrastructure development..
- ✓ Socially Disadvantaged and Veteran Farmers and Ranchers participated in livestock related programs such small-scale chicken processing and farm walk abouts. This was part of the grant funded 2501 Program.



The Value Added Meats team worked with the 2501 and Beginning Farmers Programs to teach poultry processing.

2024 Livestock Highlights

Youth activities



SMQA activities with 4Hers in Crawford County .

- Show Me Quality Assurance (SMQA) training for youth that will be exhibiting livestock was held in Dent, Phelps and Crawford Counties. A total of 174 youth were training during these events.
- Wurdack Extension and Education Center FFA Day included a wide range of demonstrations related to Agriculture and Natural Resources and was attended by 611 students.
- Ozarks Cattlemen's Beef Day is a collaboration between Extension, Cattlemen's Association, FFA and others in the community targeting grade-schoolers in Dent County. 189 4th graders attended the 2024 event.

Grazing Schools

Regional Grazing Schools provide detailed instruction to Missouri livestock producers in the areas of:

- forage and livestock management,
- efficient forage utilization,
- grazing system layout and design
- fencing and water systems.

Grazing schools are over 2 days of classroom work, hands-on field activities and farm visits. I participated in 5 different grazing schools held in Crawford, Texas, Phelps, Carter and Osage Counties, which were attended by approximately 110 producers



A mobile waterer observed on a farm visit during a Grazing School in Texas County .

Direct Marketing Beef



Beef carcasses sold directly to consumers were evaluated for quality and yield.

A Freezer Beef School was held in West Plains where participants from several counties learned about adding value to cattle by direct marketing beef, cattle finishing, stockmanship and facilities, beef carcass quality and yield, working with processors, beef pricing and marketing.

Follow-up visits with a producer in Reynolds County included carcass evaluation of beeves produced for direct marketing.

2024 Livestock Highlights

Grasslands Partnership

The Grassland Partnership collaborator recruitment and enrollment process was conducted in 2024. This is a 5-year project that MU is implementing with 8 other universities. Producers that participate in this project will be conducting on-farm trials aimed at improving productivity of grazers in the Fescue belt. Trials will include:

- Improved Grazing Management
- Establishing Warm Season Grasses
- Prescribed burn
- Interseeding Legumes
- Applying Biochar to soils

Five producers have enrollment from Dent, Texas and Phelps Counties.

Beef Heifer Development



Two quality Crawford County heifers sold through the Show Me Select Heifer sale in Vienna.

The Central Missouri Show-Me-Select Bred Heifer Sale was held at South Central Regional Stockyards in Vienna, MO on May 18th. 43 bred heifers sold for a total of \$130,550, averaging \$3,036 per heifer. The state-wide combined totals for the spring and fall sanctioned sales was 1,352 heifers sold with gross receipts of \$4,490,675.

Heifer development workshops were held in Carter and Reynolds counties, teaching strategies and techniques for heifer replacement. This included heifer selection, development and breeding.

Assisting Socially Disadvantaged & Veteran Farmers

The Missouri Assisting Socially Disadvantaged and Veteran Farmers and Ranchers (2501 program) works with its target group through several approaches including Team –to–One Coaching, conducting hands-on Learning Circles and Farm WalkABOUTs.

A Forage and Livestock Farm Walk About targeting beginning farmer veterans was held in Phelps County, creating a learning and networking opportunity for veteran farmers.



Cold Spring Farm in Phelps County shares experience in multispecies grazing with fellow veterans.

2024 Report

Sarah J. Higgins
Field Specialist in Natural
Resources
314-971-4826
sarah.higgins@missouri.edu



Covering Bollinger, Butler, Cape Girardeau, Carter, Crawford, Dent, Dunklin, Howell, Iron, Jefferson, Madison, Maries, Mississippi, New Madrid, Oregon, Pemiscot, Perry, Phelps, Pulaski, Reynolds, Ripley, Scott, Shannon, St. Francois, Ste Genevieve, Stoddard, Texas, Washington, and Wayne Counties

2024 In Review

This year saw the expansion of natural resources programming to many of my counties. I'm happy to report some highlights of 2024:

- Forest Health Field Day in the Shoal Creek Watershed in Crawford County
- Invasive Plant Workshops in Dent and Texas Counties
- Revival of Missouri Women Owning Woodlands (WOW) program
 - Monthly virtual Zoom meetings featuring women natural resources professionals connecting with women woodland owners over topics of interest.
- Youth programming: 4-H soil and water experiment and watershed curriculum
- Keep Your Forest in the Family Legacy Workshop

It was great getting to connect with everyone in person and over Zoom. I will continue to offer virtual natural resources programming as it's the best way to reach all my counties. I will also continue to bring in-person programming to more counties as well. Thank you all for your support in 2024.

Stay Up-to-Date on Natural Resources Programming

Follow our newsletters to receive information monthly about our upcoming programs & learn more about Missouri's natural resources:

MU Extension Natural Resources Newsletter



bit.ly/MU-Ext-Natural-Resources

Women Owning Woodlands Newsletter



bit.ly/missouri-wow

Looking at 2025

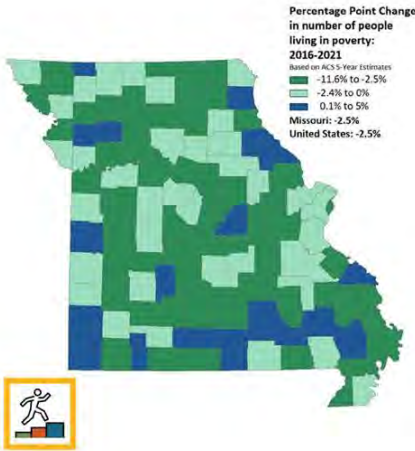
Here are a few programs to keep an eye out for in 2025.

- Women Owning Woodlands Monthly Zoom meetings
- WOW Chainsaw Safety Courses
- Invasive Plant Workshops
- Tree identification hikes
- Forest Management field days & tours
- Natural Resources youth programming

Let me know what you'd like to see in your county- looking forward to engaging with everyone in conservation next year!



MU EXTENSION **Serves MISSOURI and Delivers MIZZOU** through credible statewide programs **Business and Community**



The **Missouri Economy Indicators (MEI)** series explores business, industry and workforce topics that affect Missouri's economy. The data is shared through newsletters and on social media. MU Extension faculty and staff receive talking points and collateral to share with local stakeholders.

In 2022, MEI published 15 issues, and MEI online resources were accessed MORE THAN 5,000 TIMES. Two out of five MEI newsletter recipients reported using the information to help guide policy or decision-making in their work.



The **Missouri Small Business Development Centers** (SBDC) provide professional training and customized one-on-one counseling to small businesses across the state. Working with the Missouri SBDC helps business owners make confident decisions.

FY2020-2022, Missouri SBDC ASSISTED 878 STARTUPS and helped Missouri small businesses earn more than \$440 MILLION.



Missourians from all walks of life celebrated the **2023 Missouri Good Neighbor Week**, Sept. 28 to Oct. 4, by completing and reporting neighboring acts and nominating others as the most engaged neighbors in their counties.

In 2023, the goal was to document 15,000 acts of neighboring. That goal was surpassed with 19,752 Missourians being positively affected during MISSOURI GOOD NEIGHBOR WEEK.

Legend



Agricultural Growth & Stewardship



Economic Opportunity



Educational Access & Excellence



Health & Well-Being

UNIVERSITY OF MISSOURI EXTENSION

Community Development

Ray Walden
Community Development Specialist
573-729-3196
waldene@missouri.edu



Serving Crawford, Dent, Maries, Phelps, Pulaski, and Washington Counties

At a Glance

I serve as a Community Development Specialist out of Salem in Dent County and also cover the counties of Crawford, Maries, Phelps, Pulaski and Washington in the East Central Region.

Some of the projects I supported during 2024 included:

- Continue efforts to identify community development priorities and potential partners in support of community development programs and services
- Providing updates on community development programs and formal presentations to county councils and other stakeholders
- Rural Infrastructure Challenge Grant with Missouri S&T
- Multi-State Housing Survey

Looking at 2025

Plans for 2025 include:

- Continuing efforts with MU Extension's North Central Region Housing Working Group
- Serving as a member of MU Extension's Home Energy Efficiency Contractor Training Grant Team
- Supporting MU Extension's MO Eats initiatives for the HFFI Grant
- Working with communities to identify potential community development related grants

Please contact me with any questions about community development programs or services. I am glad to be serving the East Central Region and look forward to working with your county!

COMMUNITY DEVELOPMENT PROGRAM

BUILDING CIVIC CAPACITY FOR

THRIVING COMMUNITIES

What is Civic Capacity?

The collective strength of people in a place to respond to challenges and pursue thriving communities.

What we do

Experienced community development specialists provide research-based programming and resources to individuals, organizations and local governments based on their unique issues and assets.



How we do it

Through statewide programming, we empower residents, organizations and governments to build:

BELONGING

Building social capital and inclusivity

COLLECTIVE LEADERSHIP

Guiding collaborations with diverse community leaders

Engaging residents in civic life and decision-making

Creating conditions for equitable, thriving, resourceful places

CONTRIBUTION

VITALITY



Why it's important:

When people feel belonging within the community, they are more likely to contribute to cultivating strong, equitable, prosperous places.

Community-led change is more likely to meet the needs of all residents and make enduring progress toward local vitality.

Testimonial

"I have learned that my voice is very important, and I am a force to be listened to. I had many ideas but didn't have the courage to pursue all avenues and to make things better for my community, but I now feel that my voice is very important and should be heard."

- Community Development program participant

Programs and Services

Asset Mapping
Community Arts Programming
Community Assessment
Community Engagement
Community Planning Support/Coaching
Community Resource Development
Facilitation
Neighborhood and Leadership Classes
Strategic Doing
Youth Civic Engagement Programs



About us

The University of Missouri Extension and the University of Missouri-St. Louis have a history of successful partnerships building capacity for thriving communities.

Contact us to discuss how we can work with you to build civic capacity for YOUR thriving community.

extension.missouri.edu/topics/community-development



MU EXTENSION **Serves MISSOURI and Delivers MIZZOU**
 through credible statewide programs
Community and Professional Health Education



Strengthening Families Program: for Parents and Youth 10-14, is a seven-session series for parents or caregivers and their young teens to attend together to improve family communication, resolve conflict and improve parental skills.

A research study conducted by the Partnerships in Prevention Science Institute found a RETURN OF \$9.60 for every dollar spent implementing the Strengthening Families Program.



MU **Continuing Education for Health Professions** (CEHP) provides evidenced-based, relevant and responsive learning activities designed to narrow professional practice gaps with respect to knowledge, competence, and performance of the healthcare team. A commitment to lifelong learning, in partnership with those we serve, contributes to excellence in practice and improved health outcomes.

CEHP provided 169 LEARNING ACTIVITIES which reached over 53,000 PROFESSIONALS across all Missouri counties.



The **Missouri Research-Extension** (MO-RE) Protocol emphasizes the role of Community Health Field Specialists in transforming health and well-being across the state. Following a comprehensive county health needs assessment, each specialist is sharing their findings with partners, stakeholders and organizations in their regions to address the identified priorities.

Legend



Agricultural Growth & Stewardship



Economic Opportunity



Educational Access & Excellence



Health & Well-Being



MU EXTENSION **Serves MISSOURI and Delivers MIZZOU** through credible statewide programs **Continuing Education**



The programming from the **MU Fire and Rescue Training Institute** (FRTI) is available to all qualified fire and emergency first responders. Seventy percent of courses are held at the local departments or agencies. With most of the state's fire service personnel considered volunteer or part-time, this local access and flexibility assures training opportunities for all firefighters and emergency responders.



The **Missouri Extension Disaster Education Network** provides education and technical assistance to individuals and families, local governments, schools and organizations so they can prepare for and respond to natural and man-made disasters. Because of the unique relationship it maintains with each community, MU Extension is a key resource for the public, emergency services and public officials.



The Law Enforcement Training Institute (LETI) has provided basic and advanced training for law enforcement since 1948. LETI's **Basic Peace Officer Academy** exceeds the 600 hours of training required for licensure in Missouri. From 2019 through 2023, the basic academy has licensed almost 300 peace officers, more than any other academy in the state. During that time, all but one graduate became employed by a law enforcement agency. LETI graduates come from around the state and return to their communities to serve and protect.

Legend



Agricultural Growth & Stewardship



Economic Opportunity



Educational Access & Excellence



Health & Well-Being



MU EXTENSION **Serves MISSOURI and Delivers MIZZOU**
 through credible statewide programs
Health and Human Sciences



Show-Me Nutrition

Programming for preschool through junior high

An engaging way to demonstrate the benefits of food safety, nutrition and physical activity. Meets Missouri's Show-Me Health and Physical Education standards and the state's School Wellness Policy.

"We have struggled with our daughter's picky eating for years and have tried so many techniques to try and get her to eat new foods. Your influence on her has worked magic this year. She has come home so excited about trying new foods and has now become not only willing but excited to try new things."

Parent of a Show-Me Nutrition participant



Divorcing or separating parents encounter distinct challenges when living apart. **Focus on Kids** guides parents in fostering effective co-parenting strategies to support their children through this process.

"Understanding that divorce doesn't ruin children, but parents can significantly influence positive outcomes through good communication, was invaluable."



Stay Strong, Stay Healthy teaches older adults basic exercises to boost strength, balance and overall daily functionality. Participants also gain insights into nutrition and wellness for healthy aging and active living.

After eight weeks, Stay Strong, Stay Healthy participants significantly IMPROVED their STRENGTH, BALANCE and SLEEP QUALITY.



Legend



Agricultural Growth & Stewardship



Economic Opportunity



Educational Access & Excellence



Health & Well-Being



MU EXTENSION **Serves MISSOURI and Delivers MIZZOU**
 through credible statewide programs
Health and Human Sciences



Home Food Preservation

Preserve the season's bounty - deliciously and safely.

Learn safe techniques for pressure canning, boiling water bath canning, steam canning, dehydration and freezing.

Understand the importance of using safe preservation and storage methods to avoid cross-contamination and foodborne illnesses.

"This course made me more self-sufficient and improved my family's access to quality food."

The Boiling Water Bath canning program was hosted by the Crawford Library District, Bourbon Branch. Participants learned home food preservation techniques to safely can home prepared salsa according to the recipes of the National Center for Home Food Preservation.



The Cuba Gardening Club incorporated leafy greens into their annual meeting meal plan. They enjoyed their salads as they discussed innovations to grow more leafy greens in community spaces.
 – Loving Your Leafy Greens, Cuba, MO



Legend



Agricultural Growth & Stewardship



Economic Opportunity



Educational Access & Excellence



Health & Well-Being



MU EXTENSION **Serves MISSOURI and Delivers MIZZOU** through credible statewide programs **Health and Human Sciences**

Freeze It! teaches how to make healthy meals convenient and cost effective using freezer techniques.



After four weeks participants significantly reduce their household **food waste** and increase their consumption of **whole grains** and **dairy**.

The program was hosted at the Bourbon Branch of the Crawford Library District. This program was sponsored in partnership by the Missouri Department of Natural Resources and the Ozark Rivers Solid Waste Management District.

36 healthy meals were prepared.



Participant quotes:

Since the program I'm ...

- "using plastic containers that work well for freezing"
- "doing more group meal prep"
- "doing mindful cooking"
- "doing meal prep and freezer meals"
- "thinking about what food I already have at home"

Legend



Agricultural Growth & Stewardship



Economic Opportunity



Educational Access & Excellence



Health & Well-Being



MU EXTENSION **Serves MISSOURI and Delivers MIZZOU**
 through credible statewide programs
Health and Human Sciences



Alpha Gal:
 An allergy to red meat caused by a tick bite.

“This presentation was excellent. The kids really have some new information to think about.” – FFA Instructor, **Wurdack Extension Demonstration Farm**, Cook station, MO

Photo: FFA member high school students ‘Pulled Up Their Socks’ to reduce their risk of tick-borne illness, after learning about Alpha-Gal Mammalian Meat Allergy at the 2024 Wurdack FFA Field Day



Cooking Matters

Make quick, tasty, and affordable meals everyone will enjoy.

Learn valuable tips for stretching your food dollars and how to prepare a recipe and sample easy, low-cost, nutritious and delicious dishes.

“We prepared barley jambalaya in class and one participant mentioned she had never tried barley before. She tried the jambalaya and really enjoyed it. A few days later she excitedly said she made the recipe at home and her whole family enjoyed it!”

Cooking Matters facilitator about a class participant



Legend



Agricultural Growth & Stewardship



Economic Opportunity



Educational Access & Excellence



Health & Well-Being



Tammy Zuzack
Nutrition Program Associate

Crawford County

Health and Human Sciences

Local Impact

2024 SNAP-Ed Crawford County

The Supplemental Nutrition Assistance Program Education (SNAP-Education or SNAP-Ed) brought \$11,145,237 in federal funds to Missouri. The funds support engagement with 74,864 Supplemental Nutrition Assistance Program (SNAP) recipients and eligible citizens of Missouri who learned about being active and healthy eating on a budget. This year we had 1,164,143 indirect educational contacts through newsletters, health fairs, food pantries, and the Show Me Nutrition helpline. There were 1,213 direct and indirect contacts were made in Crawford County.

Participants in SNAP-Ed learn the importance of making healthier meals and snack choices, eating breakfast more often, are more willing to try new foods, increase their physical activity, and make healthier food choices. Those who practice healthy eating and are physically active are more likely to contribute to a healthy labor force and enjoy a high quality of life throughout the lifespan. This vital programming effort also reduces healthcare costs over the participant's lifetime, saving taxpayer money in reduced public healthcare benefits and insurance premiums.



Tammy Zuzack is the Nutrition Program Associate serving Crawford County. Below is a success story she experienced while teaching in the classroom.

I was teaching Show Me Nutrition curricula: Building My Body, Lesson 2~ Carbohydrates, to 3rd Graders. I asked students if anyone remembers what we talked about at my last visit.

As we were reviewing the Six Essential Nutrients and MyActivity Poster for Youth, this 3rd Grade girl raised her hand and said, "you are important." I told her "Thank you." Then, I asked her "why did you say that I was important?" She said, "it is what I was teaching, it was important and that everyone should have our information and know."



The **Missouri Crunch Off** is held during the month of October. It is a statewide event to celebrate Farm to School Month and the wonderful produce Missouri has to offer. Five hundred thirty-four crunch events were held statewide.

Missouri grown popcorn was handed out to several schools and businesses in Crawford County, with 1,689 people participating.

- Crawford County Sheriff's Office
- Steelville R-3 School District (whole district)
- Medley Pharmacy, Inc. in Crawford County
- Crawford County Coroner's Officer
- Bourbon Elementary School (Staff and Students)
- Cuba Ministerial Alliance
- Cuba 7th and 8th Grade Girls Basketball Teams

"This was my first time getting the Crawford County involved in the Crunch Off. I was so excited to see the enthusiasm everyone showed to help. I look forward to next year and getting more people involved", Tammy Zuzack, Nutrition Program Associate.

2024 MU Extension Reach Report

Crawford County



The MU Extension offers programs in **four key areas** to support communities across the state:

- **4-H** empowers youth with hands-on learning experiences that build essential leadership, citizenship, and life skills, ensuring they are prepared for success in school, careers, and life.
- **Agriculture and Environment** focuses on producing food and increasing profits while sustaining farms and natural resource management.
- **Business and Communities** builds ecosystems that support local workforce growth, business development, and thriving communities.
- **Health and Human Sciences** promotes wellness and educates Missouri citizens and decision-makers to improve the quality of life for individuals and families.

Each area is designed to address local needs and strengthen Missouri's communities.



Population: 22,890



Agriculture and Environment

358 contacts

- 112 Animal Health & Production Contacts
- 206 Plant Production & Technology Contacts
- 8 Ag Business & Policy Contacts
- 32 Natural Resources



Business and Community

257 Contacts

- 257 Business Development Contacts



4-H Youth Development

334 participants

- 11 chartered clubs
- 117 volunteers



First Responder Education

Fire Rescue Training Institute (FRTI)

- 45 Number of Students



Health and Human Sciences

2,058 Contacts

- 936 Nutrition and Health Contacts