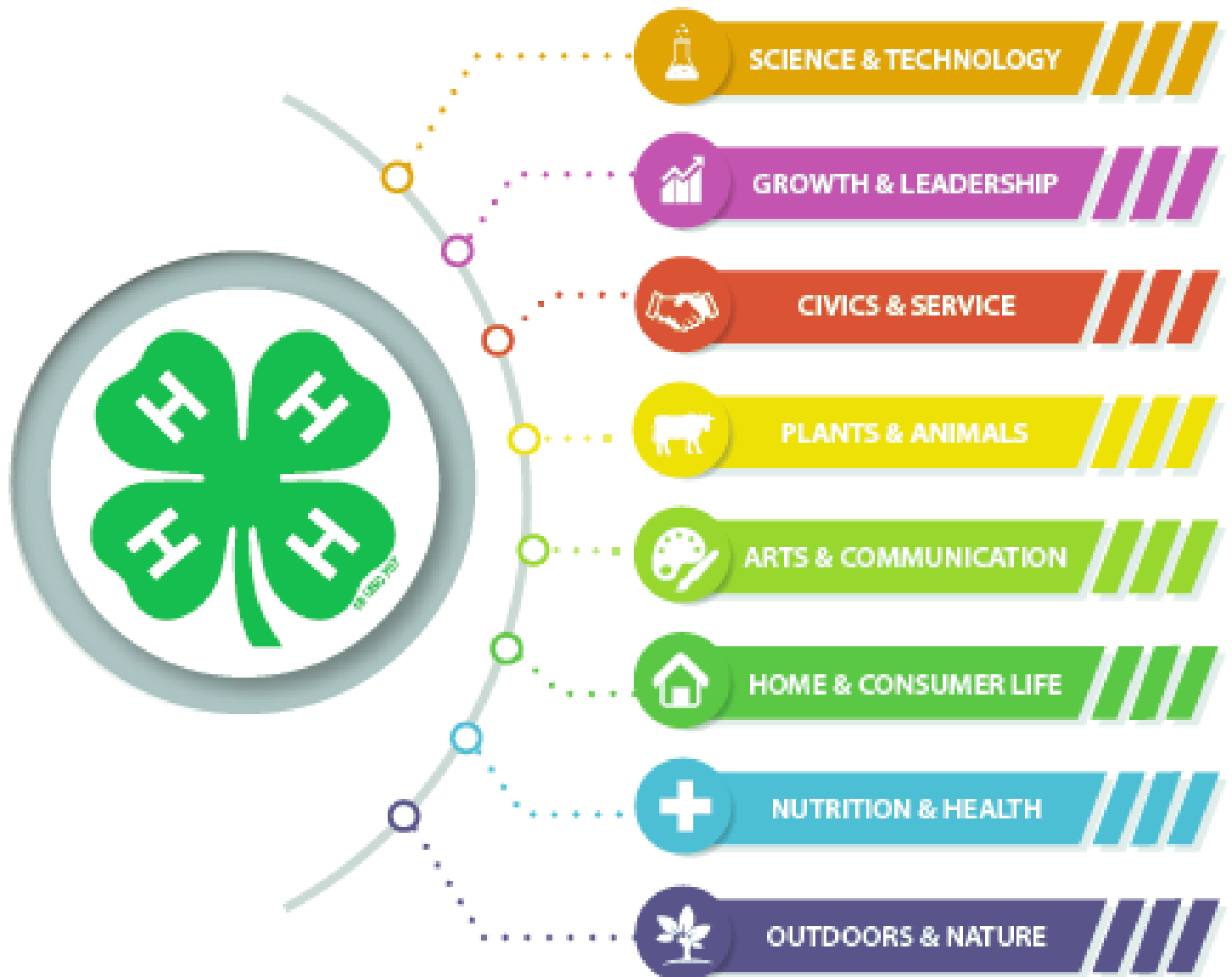


COLE COUNTY 4-H

FAMILY HANDBOOK



Section 1 - About 4-H

4-H PLEDGE

I pledge my **HEAD** to clearer thinking,
 my **HEART** to greater loyalty,
 my **HANDS** to larger service,
 and my **HEALTH** to better living,
 for my club, my community,
 my country, and my world.



I pledge:



...for my Club, my Community, my Country and my World.

Congratulations! You are embarking on an adventure along with 55,000 other members in Missouri, 6 million in the United States, and more than 7 million around the world. You join the ranks of these famous 4-H Alumni: Former President-Jimmy Carter, Former First Lady-Jacqueline Kennedy Onassis, Astronaut-Alan Shepard, 2015 Triple Crown's American Pharoah trainer-Bob Baffert, Heisman Trophy winner-Herschel White, Actress-Julia Roberts, Entertainer-Luke Bryan, and many others!

Members learn, grow, and prepare to be leaders today and tomorrow through practical and hands-on learning. Although the organization's roots are in agriculture, 4-H serves youth in rural, urban, and suburban communities. Our members are making a REAL difference in their clubs, community, country, and world. We offer a wide variety of STEM opportunities as well as our traditional programming; from agricultural and animal sciences to rocketry, robotics, environmental protection, and computer sciences, 4-H members are strategically ready to improve the nation's ability to compete in key scientific fields and take on the leading challenges of the 21st century.

The 4-H Motto



The 4-H Slogan





4-H Name and Emblem Authorization Criteria

<https://nifa.usda.gov/sites/default/files/resource/4-H%20Name%20and%20Emblem%20User%20Guide%202014.pdf>

The use of the 4-H Name and Emblem is defined through 7 Code of Federal Regulations (CFR) 8. The following is a brief summary of the code. Primary basis for all approvals include:

- Usage is for the educational and character building purposes of the 4-H Program
- The educational or informational uses are in the best interest of the 4-H Program
- Usage is consistent with the dignity of the 4-H Program
- Usage can be properly controlled by the local Extension office
- Usage is for a specific time period
- Usage follows graphic use guidelines

Any use of the 4-H Name and Emblem is forbidden if it exploits the 4-H Program. The 4-H Name and Emblem cannot be used to imply endorsement of commercial firms, products, or services. Granting authorization to an individual or organization for a specific use does not signify exclusive use and does not prevent the granting similar authorization to another individual or organization for the same or similar purpose.

4-H Name Guidelines

When using the term “4-H” it must conform as follows:

- Numeral “4” separated from a capital “H” with a hyphen (not a dash, slash, or space).
- It is well-documented in English usage, as well as in the most familiar style manuals, that you should never begin a sentence with a numeral. To comply with this rule, you would need to begin a sentence using “Four-H.” This language rule, however, is contrary to the regulations set down for use of the 4-H Name and Emblem; if such a situation arises in writings, it is far better to re-word the sentence slightly to avoid the language rule. An exception to this would be in writing news headlines where the 4-H name would be better served by using the familiar numeral-hyphen-letter combination to provide instant recognition.
- Avoid separation of any of the elements of the 4-H Name at the end of sentences. This can sometimes be difficult because some software programs override user commands. Often, these overrides do not become visible until after printing or posting to a Web page: careful scrutiny of text after trial printing or posting is advised. In most word processing programs, you can use the key combination of Shift-Control-Hyphen to guarantee all elements of “4-H” remain together.
- Do not use the 4-H Emblem in place of the word “4-H” in a title or text

4-H Emblem Guidelines

Basics

The official 4-H Emblem is a four-leaf clover with a letter “H” in each leaf and the stem turned to the right. The Emblem may be two-dimensional (flat) or three dimensional (with shadows that show depth and perspective).

Authorized users of the 4-H Emblem must ensure the following:

- They have obtained the **official** 4-H Emblem and are using it in its entirety.
- They do not “flip” the image to create a framed look. The stem on the 4-H Emblem **must** point to the right as you look at the image.
- They are familiar with resizing graphics through the software application being used, and do not distort or warp the dimensions of the Emblem.
- The 4-H Emblem is never used to imply endorsement.
- They follow the graphic use guidelines outlined in this document, or for questions or clarifications, contact 4HNE@nifa.usda.gov.

Helpful Hints

- Use the whole Emblem. The 4-H Emblem should always appear in its entirety—meaning it should always appear as a whole and complete image.
- Do not remove any leaves.
- Do not place text or other images over or on top of the 4-H Emblem.
- Keep it upright.
- Do not distort or warp the dimensions of the Emblem.
- Color. The 4-H Emblem should never be screened, shaded, gradated, or appear in a multicolored hue. Graphic Designers: The official color is 100% PMS 347 green. The clover can be green, white, black, or metallic gold.

*Contact the University of Missouri Extension in Cole County
for approval when using the 4-H Emblem.*

In Missouri 4-H we believe in...



Clearer Thinking by promoting character, maintaining excellence, and upholding the mission and honored programmatic traditions of 4-H.



Greater Loyalty by embracing diversity and inclusion while encouraging and supporting innovation, youth leadership, and futures.



Larger Service by encouraging meaningful, positive youth adult partnerships, community service, and engagement.



Better Living by supporting youth to become healthy, respectful, and productive members of society.



4-H History

The Birth of 4-H Programs

Membership in 4-H opened the door for young people to learn leadership skills and revolutionized how youth connected to practical, hands-on learning experiences outside the classroom.

Late 1800's: Making Connections

In the late 1800's, researchers discovered adults in the farming community did not readily accept new agricultural developments on university campuses, but found that young people were open to new thinking and would experiment with new ideas and share their experiences with adults. In this way, rural youth programs introduced new agriculture technology to communities.

The idea of practical and “hands-on” learning came from the desire to connect public school education to country life. Building community clubs to help solve agricultural challenges was a first step toward youth learning more about the industries in their community.

1902: Youth Clubs are Formed

A. B. Graham started a youth program in Clark County, Ohio, in 1902, which is considered the birth of 4-H in the United States. The first club was called “The Tomato Club” or the “Corn Growing Club”. T.A. Erickson of Douglas County, Minnesota, started local agricultural after-school clubs and fairs that same year. Jessie Field Shambaugh developed the clover pin with an H on each leaf in 1910, and by 1912 they were called 4-H clubs.

1914: Cooperative Extension System is Created

The passage of the Smith-Lever Act in 1914 created the Cooperative Extension System at United States Department of Agriculture (USDA) and nationalized 4-H. By 1924, 4-H clubs were formed and the clover emblem was adopted. The cooperative Extension System is a partnership of the National Institute of Food and Agriculture (NIFA) within the USDA, more than 100 land-grant universities and more than 3,000 county offices across the nation. Cooperative Extension combines the expertise and resources of federal, state, and local governments and is designed to meet the need for research, knowledge, and educational programs.

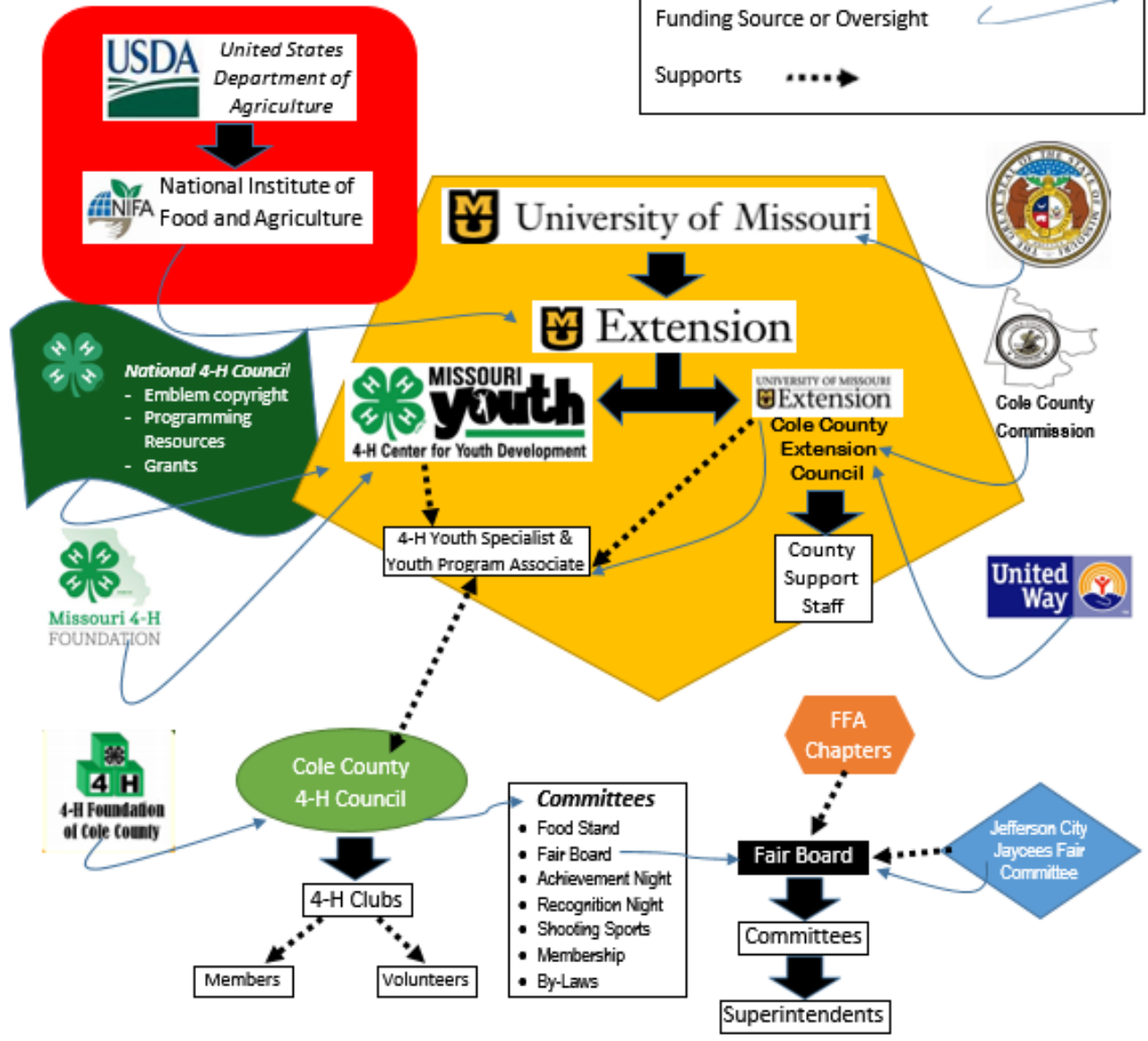
4-H Today

Today, 4-H serves youth in rural, urban, and suburban communities in every state across the nation. Members of 4-H are tackling the nation's top issues, from global food security, climate change and sustainable energy to childhood obesity and food safety. Out-of-school programming, in-school enrichment programs, clubs, and camps provided by 4-H staff and volunteers also offer a wide variety of STEM opportunities – from agricultural and animal sciences to rocketry, robotics, environmental protection and computer science – to improve the nation's ability to compete in key scientific fields and take on the leading challenges of the 21st century.

Organizational Relationship

Legend:

- Direct Relationship
- Funding Source or Oversight
- Supports



Section 2 – Location, Staff, & Governing Groups

University of Missouri Extension

The mission of University of Missouri Extension is to improve Missourians' lives by addressing their highest priorities through the application of research-based knowledge and resources. As an integral part of the land-grant mission, University of Missouri Extension is a joint venture of University of Missouri campuses; Lincoln University Cooperative Extension; the people of Missouri through county extension councils: National Institute for Food and Agriculture of the U.S. Department of Agriculture; and other stakeholders and partners. Funding sources include United State Department of Agriculture, State of Missouri, and University of Missouri.

University of Missouri Extension in Cole County

University of Missouri Extension in Cole County (Cole County Extension)

2436 Tanner Bridge Road, Jefferson City MO 65101

Phone: 573-634-2824

E-mail: coleco@missouri.edu

Fax: 573-634-5463

Office hours: 8 a.m. to 4:30 p.m., Monday through Friday (follows University of Missouri holiday schedule).

Location: Red brick building located at the corner of Tanner Bridge Road and Lorenzo Greene Drive.

Website: <https://extension2.missouri.edu/counties/cole>

Facebook: <https://www.facebook.com/MUExtColeCo/>

Instagram: <https://www.instagram.com/muextcoleco/>

Services and Programs Offered:

A few of the popular local programs and services include:

4-H:

Christal Huber, County Engagement Specialist in Youth Development,

hubercd@missouri.edu, Home Office:

Callaway County, 573-642-0755

Diane Temmen, 4-H Youth Program

Associate, temmend@missouri.edu

- 4-H
- Hatching Chicks in the Classroom

BUSINESS DEVELOPMENT:

Chris Thompson, Field Specialist in Business Development, thompsoncv@missouri.edu

- Missouri Small Business and Technology Development Center

NUTRITION:

Kevin Lawrence, Nutrition Program

Associate, lawrenceke@missouri.edu

- Family Nutrition Education Program
- Nutrition Programs

NUTRITION and HEALTH:

Lynda Zimmerman, County Engagement Specialist in Nutrition and Health Education,

zimmermanl@missouri.edu

- A Matter of Balance
- Cooking Matters
- Focus on Kids
- Food Preservation
- Stay Strong, Stay Healthy
- Taking Care of You

HORTICULTURE:

<vacant>

- Central Missouri Master Gardeners
- Soil Testing
- Private Pesticide Applicator Training
- Garden 'n Grow
- Integrated Pest Management
- Plant Diagnostic Clinic
- Weed ID
- Master Pollinator Steward

OFFICE SUPPORT:

<vacant>

- Annual Fall Festival Craft Show

Additional staff serving Cole County can be found on our website

(<https://extension2.missouri.edu/counties/cole>).

Cole County Extension Council:

In all 114 Missouri counties, the county extension council (comprised of elected and appointed citizens) is a full partner with Missouri's land-grant universities to deliver high-quality education and research-based information that helps people solve real-world problems and take advantage of opportunities. The council members work with extension specialists to provide the county educational program, manage finances of local extension operations, provide personnel to carry out extension activities, and elect and organize the local extension council.

2020-2021 Officers:

- President: Brocke Laws
- Vice-President: Jason Sullivan
- Secretary: Kris Leech
- Treasurer: Robin Garrison

Our Representatives and more information on the Cole County Extension Council can be found on the website (<https://extension2.missouri.edu/counties/cole/county-council>).

Cole County Extension Council Meeting Dates:

The meeting dates are the 1st Thursday of each month held at the Extension Office.

Cole County 4-H Council

The Cole County 4-H Council is comprised of representatives from all 4-H clubs in Cole County. The purpose of the Council is to oversee the 4-H program in Cole County. Decisions regarding policies and procedures are made by this entity. Representatives gather information from the 4-H Staff and other 4-H Clubs of upcoming events, programs, and deadlines to take back to their respective club and share with the 4-H members and families.

2019-2020 Officers:

- President: Janice Loesch, Stringtown-Corinth 4-H Club
- Vice-President: Stefani Werdehausen, Wardsville 4-H Club
- Secretary: Stephanie Howard, Stringtown-Corinth 4-H Club
- Treasurer: Cindy Hassler, Volunteer

Cole County 4-H Council Meeting Dates:

Meeting are typically the 3rd Tuesday of January, March, May, July, August, September, November at the Extension Office. Please contact your club leader for any updates.

Cole County 4-H & FFA Fair Board

The Cole County 4-H & FFA Fair Board (Fair Board) was founded in September 1996 and the purpose is:

- To plan and coordinate the youth portion of the Jefferson City Jaycees' Fair;
- To provide a safe environment for all the exhibitors, animals and exhibits during their stay at the fair;
- To improve the quality of club projects made by the youth;
- To encourage cooperation among all youth of the county;
- To maintain the youth's interest in improving the quality of projects, experiences, and enterprises as well as the general quality of life in Cole County.

The goal of the Fair Board is to plan and implement the youth and livestock activities at the fair. For most 4-H and FFA members, this is the culmination of hard work with their projects throughout the current year with the opportunity to have their exhibits and animals to be judged and displayed.

2019-2020 Officers:

- President: Jeff Suthoff, Blair Oaks FFA
- Vice-President: Greg Holtgrewe, Stringtown-Corinth 4-H Club
- Secretary: Sonya Forck, Volunteer
- Treasurer: Cindy Hassler, Volunteer

Cole County 4-H & FFA Fair Board Meeting Dates:

The Fair Board meeting dates and locations varies, please contact your club leader for the dates, or visit the website.

Jefferson City Jaycees' Fair

The fair is traditionally held Monday through Saturday the week of July 31. Several events are held prior to the week of the fair and at various locations. Be sure to review the schedule found under the fair link on our website (<https://extension2.missouri.edu/counties/cole/4-h>).

4-H Foundation of Cole County

The 4-H Foundation of Cole County (Foundation) was founded in 2006. The mission is to provide a working union of the 4-H Foundation of Cole County, Cole County 4-H Council, our 4-H families, and concerned Cole County residents to provide more opportunities, knowledge, and experience for Cole County 4-H members to become capable, competent, and caring citizens in our clubs, communities, county and world.

The goals of the Foundation include providing support to meet the needs of a changing and diverse youth population by providing funding for those who apply for:

- 4-H camps, trips, clinics and contests (local, state and national level)
- Project equipment and supplies
- Volunteer Training
- Leadership development
- Dues and/or Sponsorships

The Vision of the Foundation includes:

- Recognition & awards for volunteers/members
- College Scholarships
- Future facilities and/or upgrades

Annual Fundraiser:

- BBQ – held first Saturday in May

The Foundation meets its goals by holding fundraising events and having a mailing campaign to raise funds. Members can apply for sponsorships to help meet their project and leadership goals.

2020 Officers:

- President: Lois Fairchild
- Vice-President: Stephanie Howard
- Secretary: Carol Pleus
- Treasurer: Curtis Fisher

4-H Foundation of Cole County Meeting Dates

The Foundation generally meets quarterly. Visit the Foundation's website at <https://coleco4-hfoundation.org>

Section 3–Cole County 4-H Clubs & SPIN Clubs

Traditional 4-H Community Clubs

- **Ambassadors 4-H Club** meeting time varies. Contact the office for more information.
- **Brazito Eager Elves 4-H Club** meets at 6:30pm on the second Monday at the Brazito Lions Club, Brazito
- **Clover Crusaders 4-H Club** meeting time & location varies. Contact the club at clovercrusaders@yahoo.com for meeting location.
- **Cole County 4-H Clover Kids Club** Countywide club for Clover Kids ages 5-7. Meets third Thursday at 6:00pm at the Extension Office, Jefferson City.
- **Jefferson City 4-H Club** meets at 1:00pm on the second Sunday at Grace Lutheran, Holts Summit.
- **Osage Bend Clover Leafs 4-H Club** meets at 10:00am on the first Sunday at St. Margaret Church Hall, Osage Bend.
- **Stringtown-Corinth 4-H Club** (Russellville/Lohman area) meets at 7:00pm on the first Thursday at St. John's Church Hall, Stringtown.
- **St. Martins 4-H Club** meets at 6:30 p.m. on the first Tuesday at St. Martins Knights of Columbus (537 Hwy T). Check out their FaceBook page!
- **St. Thomas 4-H Club** meets at 11:15am on the third Sunday at St. Thomas Knights of Columbus Hall, St. Thomas.
- **Taos Clovers 4-H Club** meets at 10:00am on the second Sunday at the Taos Knights of Columbus. Check out their FaceBook page!
- **Wardsville 4-H Club** meets at 6:45pm on the second Tuesday at the Wardsville Lions Club. Check out their FaceBook page!

Special Interest Groups (SPIN)

- **Interstate Teen Exchange** Be sure to check the monthly calendar for future meeting dates. Membership is open to all 4-H members in Cole and Osage counties ages 12 and up. Members plan community service, leadership and social activities with the help of their adult sponsors. Members travel to another state (selected by the members) and learn about 4-H in the community of the host families. Then those members travel to Missouri and are hosted by our Teen Exchange families. Past activities have included sponsoring a lock-in, mystery dinner theater, assisting with the development of a local park and assisting with the military support group. Contact the 4-H Staff for more information.
- **Mid-MO Waggers 4-H SPIN Club** Be a part of a fun group of people and their dogs to continue to grow their dog's abilities with tricks, obedience, and fun activities. Whether you want to perform or just have fun in class, this is a great energy burner for your dog and social time for both you and your dog. Watch for the next session of this club to open. Contact the 4-H Staff for more information.
- **Tri-County Teens** Watch for more information on this evolving group for 4-H members ages 13-18. Contact the 4-H Staff for more information.

Countywide Projects

These projects are open to all 4-H members in Cole County and if you would like to join one of these groups, please contact the office at colecto@missouri.edu. We can put you in contact with these leaders. Current countywide projects include:

- Clover Kids
- Dogs
- Shooting Sports
- and others as we have volunteers

Section 4 – Responsibilities of Members, Parents, and Volunteers

How to join

The 4-H program is open and committed to serving all youth. Resources are available to ensure that youth with special needs have meaningful and positive experiences in the 4-H setting. Please call the Extension office to learn about these opportunities.

Members

Participants of 4-H range from ages 5-18. The 4-H year begins October 1st however, enrollment is accepted year round. Youth at least 8 years old are members; youth ages 5-7 years old are Clover Kids. There may be some state or local deadlines for participating in certain activities or programs.

Steps to become a 4-H member:

1. Choose a Club. Feel free to visit a club that meets near you or meets at a convenient day, time, or location for your family.
2. Select at least one project. Pick up a booklet from your club leader or go to the Missouri 4-H website (<https://extension2.missouri.edu/programs/missouri-4-h>) for a list of opportunities. Or feel free to design your own project (Self-Determined project)! Some projects might require a small investment. We don't want cost to be a barrier to participation. We encourage you to apply for a sponsorship from the 4-H Foundation of Cole County.
3. Enroll online at <https://mo.4honline.com>.
4. Dues are currently \$25 payable at time of enrollment (by December 31); \$30 January 1 through August 31. Clubs may have additional dues payable to the club's Treasurer. Some projects (animals, for example) may have additional costs associated with the project.
5. Begin attending and participating in meetings as soon as possible. Some projects and events have pre-requisites for participation.

NOTE: Shooting Sports project members must complete the Shooting Sports Safety project before participating on the range. The family must also join the United Sportsmen's Club if participating in practices at this location.

Please do not let cost be a burden. Sponsorships are available by completing the Sponsorship Application Form (available on the website at <https://extension2.missouri.edu/counties/cole/4-h>). We have ways to help everyone become involved.



Responsibilities of a 4-H Member:

- Know the pledge and motto. Be able to explain it to someone.
- Stay informed:
 - Club happenings through club Facebook Page, emails, texts
 - County happenings:
 - E-mail
 - Facebook Page Name=Cole County 4-H (Cole County, MO)
 - Website = <https://extension2.missouri.edu/counties/cole/4-h>
 - State happenings:
 - 4HOnline e-mails
 - Facebook Page Name=Missouri 4-H
 - Twitter=Missouri 4-H
 - Website=<https://extension2.missouri.edu/programs/missouri-4-h>
- Come to the meetings. Be prepared and ready to get involved.
- Help other members – be supportive, encouraging, and helpful.
- Be aware of deadlines and rules and FOLLOW them.
 - Submit enrollment forms and registrations ON TIME.
 - Pay club dues, event fees, fair entry fees ON TIME.
- Stay in touch with your Club and Project leaders – don't wait for them to call.
- When a project leader holds a meeting, please attend. Contact your leader if you are unable to attend.
- Actively look for opportunities to help and to lead.
- Present at least one well-prepared speech, demonstration, or presentation every year.
- Understand that you are part of an organization that is larger than you, your family, your club, and the fair.
 - Participate in county, regional, state, and national activities and events.
 - Take part in at least one non-fair 4-H function outside of the club every year.
- Participate in Fundraisers to keep Cole County 4-H thriving and growing.

*See Member in Good Standing Policies in
Section 5-County Policies*



4-It is like a buffet:

You have to get up out of your chair, get a plate and a tray, and then go through the line if you're going to get any good out of being there.

Volunteers

Volunteers are the backbone of the 4-H program. Volunteers keep the program growing.

Steps to becoming a Cole County 4-H Volunteer:

- **Enroll in 4HOnline (Missouri's 4-H Enrollment Database - <https://mo.4honline.com>)** - Documentation of a volunteer applicant's full contact information, desired volunteer role and agreement with Missouri 4-H policies (e.g., Confidentiality, Youth Protection) is done through online enrollment in the Missouri 4HOnline system. Applicants need to set up an adult volunteer profile
- **Background checks** - All new volunteers must complete the Background Check Consent Form (available on the Missouri 4-H website at <https://extension2.missouri.edu/programs/missouri-4-h/get-involved-with-4-h/volunteer-with-4-h>). The form should be mailed or delivered to the Extension Office. Forms cannot be accepted via e-mail as attachments are not secure. The Missouri 4-H office will notify volunteer applicants once the screening is successfully completed.
- **Volunteer Orientation** - This training helps volunteers understand the depth and breadth of the Missouri 4-H Program. In-person training is the best format; however online orientation (and feedback form) is located within 4HOnline (<https://mo.4honline.com>). Contact our office for next in-person session. A paper version is also available by contacting the 4-H Staff.

These steps guarantee that volunteers are covered by Missouri 4-H's accident insurance and the University of Missouri's risk liability insurance.

Some projects require leader certification (Shooting Sports, Sportfishing, Horse Bowl, etc.)

Responsibilities of a 4-H Parent/Volunteer:

- Provide a safe environment.
- Strive to be a positive role model.
- Work as a team player for the good of all persons.
 - Work cooperatively with other adult volunteers
 - Abide by the policies and procedures as determined by the Missouri 4-H Center for Youth Development, the Cole County 4-H Council, and the Cole County 4-H/FFA Fair Board.
- Stay informed:
 - Club news:
 - Ask your club leader to find out how they communicate club happenings.
 - County news and announcements:
 - E-mail
 - Facebook Page Name=Cole County 4-H (Cole County, MO)
 - Website=<https://extension2.missouri.edu/counties/cole/4-h>
 - State news and announcements:
 - 4HOnline e-mails
 - Facebook Page Name=Missouri 4-H
 - Twitter=Missouri 4-H
 - Website=<https://extension2.missouri.edu/programs/missouri-4-h>
- Come to the meetings with your 4-H member. Be active and volunteer to help. The club leader can't do it alone. Volunteer for county-wide committees. The more you give, the more you get in return.
- Help other members – be supportive, encouraging, and helpful.
- Make sure you aware of deadlines and rules and FOLLOW them.
 - Submit enrollment forms and registrations ON TIME.
 - Complete required training in a timely manner.
 - Pay club dues, event fees, fair entry fees ON TIME.

- Be proactive! Stay in touch with your member's Club leader(s) and Project leaders – don't wait for them to call.
- When a project leader holds a meeting, BE THERE...no excuses!
- Understand that you are part of an organization that is larger than you, your family, your club, and the fair.
 - Encourage members to participate in county, regional, state, and national activities and events.
 - Encourage members to take part in at least one non-fair 4-H function outside of the club every year.
- Participate in Fundraisers to keep Cole County 4-H thriving and growing.



Section 5–County Policies

Cole County 4-H Club in Good Standing Policy

(Adopted May 2015; effective October 2015)

- Club must hold minimum of four meetings
- Enrollment:
 - Special Interest Clubs (SPIN Club): Must have 2 members
 - Community Clubs: Must have 5 members from 3 families *(Adopted February 2016; effective October 2016)*
- Must have at least 1 recognized club leader and at least 1 recognized project leader who conducts a meeting and provides a minimum of 6 hours of instruction.
- 4-H Member and Volunteer records must be entered in enrollment system in a timely manner (Re-enrollment completed by Jan. 1st)
- Plan, Implement and Evaluate a community service project.
- Turn in club audit packet by due date.
- Participate in rotation of countywide committees and fundraisers.
- Appoint a representative to attend 50% of 4-H Council meetings
- Clubs not adhering to these policies will have their charter revoked.

Cole County 4-H Member in Good Standing Policy

(Adopted September 2012)

- Complete 1 Demonstration during the 4-H year (hands-on, PowerPoint, team, speech, etc.)
- Attend 50% of club/group meetings. New members must attend 50% of meetings from the time of joining a club.
- Enroll in at least 1 project and complete 6 hours of project work receiving guidance from a recognized adult volunteer.
- Certain projects may require a certified instructor and may have additional requirements (ie. Shooting Sports, SportFishing, Horse Bowl, etc.)
- Club dues:
 - Members must enroll and have dues paid to club by December 31 each year.
 - Late enrollments will be assessed a \$5 late fee. ***(Added February 2016)***
 - New members enrolling after January 1 need to pay dues to club in a timely manner.

Secondary Club Member Policy:

(Adopted May 2015; effective October 2015)

- The 4-H Member from a surrounding county is encouraged to join their home county's program first. If special circumstances exist that make it a burden to participate in their home county, the member must request in writing their reason for wanting to join Cole County's program.
- Project Leaders will determine if there is room to accommodate the youth.
- If accepted, the member must complete the following steps:
 - Join a Cole County 4-H club as a second club in 4HOnline
 - Pay Cole County dues plus any club dues
 - Participate in Cole County fundraisers

Project Changes for Participation in Fair:

- To allow time for project instruction and completion, members must complete project enrollment changes by April 1st each year.

Recognized Adult Volunteer Policy

- The adult volunteer must be
 - registered as a volunteer through 4HOnline and have an active status;
 - age 18 and older and not enrolled as a 4-H Member.

Section 6-Club Policies

Ambassadors 4-H Club:

- Must follow Cole County 4-H Member in Good Standing Policy

Brazito Eager Elves 4-H Club:

- Must follow Cole County 4-H Member in Good Standing Policy

Clover Crusaders 4-H Club:

- Must follow Cole County 4-H Member in Good Standing Policy

Cole County Clover Kids:

- Must follow Cole County 4-H Member in Good Standing Policy

Jefferson City 4-H Club:

- Must follow Cole County 4-H Member in Good Standing Policy

Osage Bend Clover Leafs 4-H Club:

- Must follow Cole County 4-H Member in Good Standing Policy

Stringtown Corinth 4-H Club:

- Must follow Cole County 4-H Member in Good Standing Policy
- Must help/attend one of County Events:
 - Recognition Night
 - Achievement Night
 - Foundation BBQ
 - Help sell Tractor Supply Paper Clovers
- Must help/attend one of three Club Events:
 - Christmas Parade
 - Help with Special Learning Center
 - Summer Farm Tour
- Must help/attend one of the Community Service activities:
 - Fall trash pickup
 - Samaritan Center help
 - spring trash pickup
 - any service projects as they come available to the club

St. Martins 4-H Club:

- Must follow Cole County 4-H Member in Good Standing Policy

St. Thomas 4-H Club:

- Must follow Cole County 4-H Member in Good Standing Policy

Taos Clovers 4-H Club:

- Must follow Cole County 4-H Member in Good Standing Policy

Wardsville 4-H Club:

- Must follow Cole County 4-H Member in Good Standing Policy
- Must help/attend one of County Events:
 - Recognition Night
 - Achievement Night
 - Foundation BBQ
 - Help sell Tractor Supply Paper Clovers

SPIN Clubs:

Mid-MO Waggers 4-H SPIN Club:

- Must follow Cole County 4-H Member in Good Standing Policy

Tri-County Teens SPIN Club:

- Must follow Cole County 4-H Member in Good Standing Policy



Section 7–Calendar of 4–H Events

For the most up-to-date list of all 4-H events, please visit our website
<https://extension2.missouri.edu/counties/cole/4-h>

Club/County Events

State Events

Oct	Due: Club Leaders Audit Packets	Year Round	JoAnn’s 4-H Rewards Program
Oct	Elect Officers (if not already completed)	Oct 1-Dec 31	4-H Enrollment-opens (members & volunteers)
Oct	Club Officer Training	Oct	National 4-H Week
Oct	Club set budget	Oct	Tractor Supply Paper Clover Campaign
		Oct	Fashion Review
		Oct	Shooting Sports Leader Certification
		Oct	National Youth Science Day
		Oct	4-H Day w/ Mizzou Tigers (Football)
Nov	Due: Level 1 & 2 Recognition Forms (Reg. Judging)	Nov	Due: Outbound Global Education Travel Apps
		Nov	Missouri 4-H Foundation Trivia Night Fundraiser
		Nov	Missouri 4-H Shooting Sports Awards Banquet
		Nov	National 4-H Congress
Dec	Due: County Cured Hams order	Dec 1	Due: Zoo Apprentice Camp Applications
Dec	County Shooting Sports Awards Banquet	Dec 1	Due: Legislative Academy Applications
Dec 31	Due: Volunteers background check & orientation	Dec-Jan	Zoo Apprentice Camp
Dec 31	Due: 4-H Enrollment (\$25 per member)		
Jan 1	4-H Enrollment late fee (\$30 per member)	Jan	Due: Teen Conference Applications
Jan	Country Cured Ham pick up @ Burgers	Jan	Due: Frank Graham Award Nominations
		Jan thru Apr	4-H Feeding Missouri
Feb	Due: 4-H Regional Representatives Applications	Feb	Due: State Congress Scholarship Applications
Feb	4-H Regional Interviews (National 4-H Congress)	Feb	Due: Meats Judging Contest Reg.
Feb	4-H Regional Rep Interviews (State 4-H Council)	Feb	Due: H Horse Judging Contest Reg.
Feb	Due: Level 3 Recognition forms due (Regional judging)	Feb	Due: Youth Civic Leaders Summit Registration
Feb	Regional Energizer	Feb	Due: Teen Conference Registration
		Feb	Due: Beekeeping Essay Contest entries
		Feb	Missouri 4-H Meats Judging Contest
		Feb	Missouri 4-H Horse Judging Contest
		Feb	Legislative Academy
		Feb	Missouri 4-H Clowning Workshop
		Feb thru Apr	4-H MOVE Across Missouri (log minutes)
Mar	Due: Missouri 4-H Hall of Fame nominations	Mar	Due: Missouri 4-H Foundation Scholarship
Mar	Market Beef weigh in	Mar	Due: 4-H Day with the Cardinals Tickets
Mar	4-H Camp Counselor training begins	Mar	Due: Missouri Tennessee Walking Horse Applications
Mar	ShoMe Quality Assurance training (livestock)	Mar	Due: Missouri 4-H Equine Tour Application
Mar	Shooting Sports Safety Meetings	Mar	Due: Horse Bowl Contest Registration
Mar	Regional Horse Bowl Contest (if needed)	Mar	Due: Hippology Contest Registration
		Mar	Due: Missouri 4-H Hall of Fame Nominations
		Mar	MO Dept. Ag Youth Grading & Judging Clinic
		Mar	Teen Conference
		Mar	MO Dept. Ag Youth Grading & Judging Contest
		Mar	Youth Civic Leaders Summit
		Mar	National 4-H Conference
		Mar/Apr	Shooting Sports Leader Cert. Workshop

Spring County Achievement Night

Spring JoAnn's Papers Clover Campaign

March through September--Show Me Wares Booth

Open to all 4-H members who wish to sell handmade items Sign up is required

Apr 1 Due: Project Changes in 4HOnline

Apr Due: Level 3 Recognition Forms (state judging)

Apr Shooting Sports practices begins

Apr Market Swine weigh in

Apr Horse Bowl Contest

Apr Hippology Contest

Apr Show Me Mizzou Day (MU Open House w/4-H)

Apr National 4-H Conference

Apr National Volunteer Week

Apr National Day of Service

Apr True Leaders in Service Month

Apr Advanced Shotgun Leaders Workshop

Apr Western Heritage Workshop

Apr Hunting & Outdoor Skills Leader Certification

Apr/May Raise Your Hand Campaign

May Camp Registrations due

May 4-H Horse Enrollment Forms due

May 4-H Foundation BBQ Fundraiser

May Market Goat weigh in

May Market Lamb weigh in

May Due: SportFishing Registration

May Due: Public Speaking Academy Registration

May Due: State Poultry Registration

May Due: MOVE Across MO reporting

May Missouri 4-H Equine Tour

May State 4-H Congress

May 4-H Day with the Cardinals

May 4-H Robotics Conference

May 4-H Day with the St. Louis Cardinals

Jun Due: Jefferson City Jaycees' Fair Pre-Registrations

Jun 4-H Counselor Camp

Jun 4-H Camp(s) traditional, shooting sports, canine

Jun Country Cured Bacon orders due

Jun Market Poultry ownership

Jun Market Rabbits ownership

Jun Naomi Crouch Award nominations

Jun Interstate Teen Exchange Travel/Host

Jun Due: Sheep/Goat Nose prints (MO State Fair)

Jun Due: Swine DNA samples (MO State Fair)

Jun Due: Naomi Crouch Award Nominations

Jun SportFishing Contest

Jun Public Speaking Academy

Jun Shooting Sports National Contest

Jun Citizenship Washington Focus Trip

Jun Bits, Boots, & Brains Tour (ages 11-13)

Jun Poultry Day & Contest

Jun MO 4-H Foundation Clover Classic Golf Match

Jun Kids & K-9 Camp

Jun/Jul Citizenship Washington Focus Trip

Jul Due: Country Cured Bacon order/selection

Jul Fair: Shooting Sports Match

Jul Fair: Public Speaking contests

Jul Fair: Fashion Revue contest

Jul Fair: Horse Show

Jul Fair: Royalty contest

Jul Fair: Conference Judging

Jul/Aug Jefferson City Jaycees Fair

Jul Due: Missouri State Fair entries

Jul Due: MFA Saddle Award application

Jul Due: 4-H Century Family Award application

Jul Due: State Shooting Sports Registration (Skeet, Trap, Archery-NFAA)

Jul Missouri State 4-H Horse Show

Jul Youth Futures Conference

Jul Summers @ Mizzou Camps

Jul/Aug FilmFest

Aug Shooting Sports Practices Resume for Aug state events

Aug Due: MO State Fair 4-H Demonstration Reg.

Aug Due: State Shooting Sports Registration (all other events)

Aug Due: Livestock Judging Contest

Aug Missouri State Fair

Aug Missouri 4-H Film Fest

Aug Western Heritage National Conference

Aug State Shooting Sports Match (Skeet, Trap, Archery 300)

-
- | | | | |
|----------|--|-----|---|
| Sep | Due: Recognition forms Level 1, 2, & 3 | Sep | Livestock Judging Contest |
| Sep | Due: Individual Project Record forms | Sep | Public Speaking Contest |
| Sep | Due: Officer Books (Secretary & Treasurer) | Sep | Horse Public Speaking/Demo Contest |
| Sep | Due: Club scrapbooks | Sep | Western Heritage State Shoot |
| Sep | Due: Youth Service Communities form | Sep | State Shoot (Air Pistol, Air Rifle, Archery 600,
Smallbore Rifle, Smallbore Pistol, Hunting Skills,
Muzzleloading, Archery 3-D, Sporting Clays) |
| Sep | United Way Campaign | Sep | Shooting Sports State Team Tryouts |
| Sep | Shooting Sports Practices Resume for Sept state events | Sep | Western Heritage State Shoot |
| Sept/Oct | Cole County 4-H Recognition Night | | |

Section 8- FAQ's (Frequently Asked Questions)

ENROLLMENT

How do I enroll my child in 4-H the first time? (Detailed instructions)

- 1) Log into <https://mo.4honline.com> (Google Chrome or Mozilla Firefox are preferred web browsers)
- 2) Select "I need to set up a profile".
 - a) A valid e-mail address is required. Please use one that you check often as important information will be relayed using this e-mail address. You will also have access to your profile information and to receive information about 4-H projects/activities.
- 3) Create your family's profile.
- 4) Create/Add a profile for 4-H member/Clover Kid or adult volunteer (one at a time) by selecting "Add a New Family Member" drop-down menu.
 - a) Complete the profile information including demographic information, authorizations, health information, club, and project selections. *Note:* must select at least one club and one project. Project changes/additions are allowed until April 1st.
- 5) Proceed to check out and select method of payment
 - a) When paying by credit/debit card, the member's record will become ACTIVE as soon as the enrollment is accepted and the card is successfully processed. Watch your e-mail if there are any issues with your card.
 - b) If paying by 4-H Check, your status will remain "Pending" until your club's treasurer receives your payment and then the club will submit a check to the Cole County 4-H Council.

How do I renew my enrollment in 4-H? (Detailed instructions)

- 1) Log in to your family profile with your e-mail address when you originally enrolled.
 - a) If you don't remember the e-mail address, please contact the Extension Office (573-634-2824 or coleco@missouri.edu)
 - b) If you forgot your password, select "I forgot my password" and follow the prompts to change it. Watch your e-mail address for additional instructions.
- 2) Continue to your Family member list
- 3) Select "Edit" to the member you are re-enrolling
- 4) Select "Enroll for the 20XX-20XX year" at the bottom of the first page
- 5) Review all content in the member profile, answer the authorization questions appropriately, complete the health/medication page, and update projects. If you do not want to enroll in a prior year's project, delete it.
- 6) Proceed to check out and select method of payment
 - a) When paying by credit/debit card, the member's record will become ACTIVE as soon as the enrollment is accepted and the card is successfully processed. Watch your e-mail if there are any issues with your card.
 - b) If paying by 4-H Check, your status will remain "Pending" until your club's treasurer receives your payment and then the club will submit a check to the Cole County 4-H Council.

NOTE: Registration for all state events require the member to be in "Active" status in 4HOnline (<https://mo.4honline.com>).

Please contact the Extension Office if you experience difficulties. We can provide a computer, internet access, or other alternatives.

Why do I have to enroll in 4-H, have a background check, and take training to be a volunteer?

Short Answer: To protect you and to keep our kids safe!

By enrolling in 4HOnline, you will be able to find out who in your club is enrolled in the project you are leading. If you let the 4-H Staff know that you would be interested in leading a countywide project, you will have contact information for the members signed up for the associated project.

Background checks have become the standard for working with youth whether you are in a church setting, school setting, or a youth organization. Missouri 4-H has also adopted this standard.

Volunteer Orientation is designed to give you an introduction to the 4-H program, policies and procedures that volunteers should be knowledgeable about. It is also designed to give you plenty of resources to help make your job more successful. Training is available through 4HOnline, by paper, or by contacting the 4-H Staff for and in-person training session.

All three of these steps guarantee you are a recognized volunteer and are covered by Missouri 4-H's insurance policy and the University of Missouri's Liability Insurance. Also, only recognized volunteers have access to use the 4-H Emblem and Name.



PROJECTS

How many projects can I enroll in?

Please consider how much time you have to devote to project work. It is better to do a few projects really well than choose too many and not have time to complete them. Also, keep in mind that to truly master a project area, it may take you more than a year.

It is recommended to enroll in no more than three projects for your first year. A general guideline for members is ages 8-10 years old to enroll in three projects. Ages 11 and older are able to enroll in 3-6 projects. However, you are able to enroll in a maximum of 15 projects through 4HOnline (<https://mo.4honline.com>).

A minimum of 6 hours of learning instruction by an approved 4-H volunteer is required to complete a project. Some projects may require more investment of your time. Project leaders should plan eight meetings lasting about 1 to 1½ hours.

Consider enrolling in projects you are familiar with as well as exploring projects that are new to you.

How do I know if there is a leader for the project I want to take?

Talk to your club leader. Enrollment is asked to be completed by December 31st, so your club leader can help project leaders know which members are interested in the project they are leading. Project leaders also have authorization to see your contact information in 4HOnline (<https://mo.4honline.com>).

What if there is not a project leader for the project I want to take?

Project offerings are dependent on finding volunteer leaders. If a leader is not available within your club, your club leader can bring this information to a 4-H Council meeting or let the 4-H Staff know. Sometimes, other clubs will be able to help. Often, family members may become the leader. Thanks to our United Way grant, we are able to provide curriculum for both the leader and the member.

Where do I find project literature?

Under each project listed in the Clover, you will find the curriculum that aligns with learning and advancement in Missouri 4-H projects. You will also find in each of the project areas suggested resources for all levels of the projects that supplement the curriculum. Each curriculum or resource guide for youth and adult volunteers has indicators of how to obtain the curriculum we believe will assist youth in learning and mastering a project area.

Some literature may be available as a PDF to download. If there is a cost associated with the literature, do not purchase. Instead, contact the Extension Office via e-mail (colecto@missouri.edu). Thanks to our United Way grant, we are able to provide curriculum for both the leader and the member.

How do I change which projects I am enrolled in?

You have until April 1 to add, change, or drop projects in 4HOnline (<https://mo.4honline.com>). However, some projects (i.e., shooting sports) will not be able to be added due to pre-requisites that have already have passed.

Log into your family's profile in 4HOnline (<https://mo.4honline.com>) and make the necessary changes for each member/volunteer.

Animal Projects

What are the requirements for animal projects?

One of the objectives in owning an animal is to learn new skills in animal breeding, feeding, management, and health. To accomplish this, the member should secure the animal as early in the year as possible. Livestock shows and exhibitions set up minimum dates for length of ownership necessary for exhibition.

Members must complete the appropriate level of Show-Me Quality Assurance program (SMQA) before June 1. Information will be sent in February regarding your current status and training opportunities.

Follow the requirements and deadlines for the species you wish to show. There are specific dates of ownership for Cole County and Missouri State Fair as follows:

Species	Ownership Date (County)	Weigh-in Date	Ownership Date (Mo State Fair)
<i>Beef Cattle:</i>			
Steers & market heifers	by weigh-in date	Saturday in early March	March 1
Breeding animals	June 1		June 1
Bucket Calf	June 1		N/A
<i>Dairy Cattle:</i>			
Breeding animals	N/A		June 1
<i>Sheep:</i>			
Market lambs	by weigh-in date	1 st weekend in May	June 1
Breeding animals	June 1		July 1
<i>Swine:</i>			
Market hogs	by weigh-in date	3 rd weekend in April	90 days before show date
Breeding animals	June 1		90 days before show date
Breeding boars	Since farrowing		Since farrowing
<i>Goats:</i>			
Meat goats	by weigh-in date	1 st weekend in May	June 1
Breeding animals	June 1		N/A
Dairy goats	June 1		June 1
<i>Poultry:</i>			
Market poultry			
Meat Pen	before July 1		5-10 weeks prior to show
Roasters	before July 1		8-10 weeks prior to show
Broilers	less than 70 days		6-8 weeks prior to show
Fryers	before July 1		5-10 weeks prior to show
Ducks	at least 90 days		N/A
Turkey	approx. 16-20 weeks		N/A
Breeding animals	before July 1		N/A
<i>Rabbits:</i>			
Market rabbits	6-10 weeks prior to show		June 1
Breeding animals	June 1		June 1
<i>Horses</i>			
	May 1		May 1
<i>Dogs</i>			
	April 1		April 1

Shooting Sports Projects

What is the timeline for Shooting Sports projects?

Typically, there is a kick-off meeting once a majority of the members have enrolled. This will give families an opportunity to meet the instructors, find out more information about each discipline, and network with other Cole County 4-H members and families.

Shooting Sports Safety is a pre-requisite for participating in any 4-H shooting sports project. All first-year members are required to complete the 4-H safety course. In Cole County, this consists of classroom instruction, followed by a Range Etiquette session at United Sportsmen's Club in late March/early April. Practices typically begin after the Daylight Savings time change.

Practices continue weekly until the Cole County Shooting Sports Match in mid-July. Practices cease for the Jefferson City Jaycees' Fair and resume in August or September as announced by the instructors.

Those members meeting the eligibility requirements, may choose to participate in the Missouri Shooting Sports Match held in August and September. Youth 14 and older may also choose to try out for the Missouri State Team with the opportunity to compete at the National Shooting Sports Tournament.

FAIR

<https://extension2.missouri.edu/counties/cole/4-h> – Select Fair in menu on left side

What is the big deal about the fair?

Fairs, contests, and competitions are often the highlight of the 4-H year. Participation in the fair is not mandatory nor required to complete a project. Although competition is part of the 4-H program, the real benefit comes from learning, not from winning. Skill learned and friendships made in 4-H will long outlast any ribbons and trophies won.

From a youth development perspective, fairs allow 4-H members to display projects and to participate in educational experiences critiqued by an adult expert. Fairs, contests, and competitions provide opportunities for 4-H members to demonstrate new knowledge, abilities, skills, and attitudes. These events also provide a showcase for recognition of youth and allow an avenue for members to practice the life skills of teamwork, cooperation, communication, sportsmanship, as well as club pride and unity.

How do I enter my projects and/or animals for the county fair?

We use an online registration system. More information is on the fair webpage on the Cole County 4-H website (<https://extension2.missouri.edu/counties/cole/4-h>). Find your desired area and click the link for rules.

How many items may I bring to the fair?

Check the rules because each area has its own entry limits.

For the exhibit building, you will want to bring the items that show your BEST work in the project work for the current year.

What if I don't know what items I want to enter in the Exhibit Building yet?

All items pre-registered are eligible for selection to advance for display at the Missouri State Fair. We encourage you to pre-register your item(s) with the description of "TBD". Contact the office once you know the description of your item(s).

When do we bring items to the fair?

Exhibit Building: Check the rules and schedule; typically, Saturday morning prior to the fair's opening day.
Animals: Check the rules and schedule for time to be on the fairgrounds, time to check-in and/or weigh-in, show time, and release time.

When do we pick up our item(s) from the Exhibit Building?

Varies. Check the rules, website (<https://extension2.missouri.edu/counties/cole/4-h>), or ask your club leader.

How are Exhibit Building items judged?

Members participate in Conference Judging. This provides an opportunity for the 4-H member and judge to review together the item or presentation to be evaluated. The member and judge discuss the strong and weak points and how the exhibit might be improved. This procedure gives the member a greater sense of personal involvement. Project work becomes more educational when the member has a part in the evaluation process. Constructive feedback helps the member gain additional knowledge and skills.

Country Cured Hams and Bacon

My ham and/or bacon received a blue ribbon, what do I need to do now?

Congratulations! You may sell one item at the Ham & Bacon Auction. If you have a blue ribbon ham and a blue ribbon bacon, you will be contacted by fair personnel to determine which one you want to sell. If you have two of one type, the highest scoring item will be on the auction list.

Check the rules for the Ham & Bacon Auction.

My ham and/or bacon didn't receive a blue ribbon. What do I need to do now?

Your ham and/or bacon must remain on display until designated check out time. In special circumstances, the Superintendent might call you to pick up your item early. Check the rules for the Ham & Bacon Auction.

Shooting Sports

How do I sign up for the Shooting Sports Match?

Check the rules for the Shooting Sports Match. You will be able to select a time to shoot for your discipline.

ACHIEVEMENT NIGHT

The Cole County 4-H Council sponsors an annual Achievement Night where 4-H members get to be the judge! Members practice decision making and public speaking skills. Members also have the opportunity to give their demonstration. A volunteer panel of judges will be selecting the demonstrations that will represent Cole County at the Missouri State Fair.

Cole County 4-H Clubs host this event in the spring of the year on a rotating schedule. This gives your club members an opportunity to practice their leadership skills while planning an event under the guidance of adult volunteers. All Cole County 4-H families are encouraged to attend and support their fellow 4-H members. An awesome opportunity for great food and making new friends.

RECOGNITION NIGHT

Awards banquet where 4-H members receive awards for their accomplishments during the year. The 4-H Council also selects awards for 4-H'er of the Year, Friend of 4-H, and Volunteer of the Year.

Award forms are listed on the Cole County 4-H website at <https://extension2.missouri.edu/counties/cole/4-h>.

OTHER OPPORTUNITIES

Camps & Conferences

Missouri 4-H offers a wide variety of camps and conferences to round out your 4-H experience. Interested in dogs, aerospace, or civic engagement? We have an opportunity for you! Many of these opportunities, such as Teen Conference and State 4-H Congress, are for ALL youth, no matter what your interest area. These are a place to learn and grow with other 4-H youth from across the state. More information at <https://extension2.missouri.edu/programs/missouri-4-h/4-h-opportunities/4-h-camps-and-conferences>.

Current opportunities include:

EVENT	LOCATION	TIME	AGES
4-H Camp	Camp Clover Point, Lake of the Ozarks State Park	June	Campers: ages 8-13; Counselors: ages 14-19
4-H Kids & K-9 Camp	Camp Clover Point, Lake of the Ozarks State Park	June	all ages
4-H Legislative Academy	Jefferson City	February	teens
4-H Teen Conference	Columbia	March	ages 11-13
4-H Zoo Apprentice Camp	Busch Gardens, Tampa, FL	Winter School Break	Junior Apprentice: ages 10-13; Apprentice: ages 14-19
Aerospace Camp	Missouri University of Science & Technology-Rolla	July	ages 10-13
Citizenship Washington Focus	Washington, DC	end of June/first part of July	ages 15-18

<i>Camps & Conferences, Continued</i>			
EVENT	LOCATION	TIME	AGES
Dairy Cow Camp	Springfield	May	all ages (limited enrollment)
Dairy Judging Camp	Southwest Missouri	July	all ages (limited enrollment)
National 4-H Conference	Chevy Chase, MD	March/April	ages 14-19 (competitive application process)
National 4-H Congress	Atlanta, GA	November/December	ages 14-19 (competitive application process)
State 4-H Congress	University of Missouri-Columbia	May	ages 14-19
Summers @ Mizzou	University of Missouri-Columbia	July	various camps for different ages
Youth Civic Leaders Summit	Windermere, Lake of the Ozarks	February/March	Teens
Youth Futures Conference	Columbia/Jefferson City	TBD	completed 8 th grade

Trips, Contests, & Clinics

EVENT	LOCATION	TIME	AGES
4-H Day with St. Louis Cardinals	St. Louis	May	all ages
4-H Day with Kansas City Chiefs	Kansas City	TBD	all ages
4-H Day with Mizzou Tigers	Columbia	TBD	all ages
Agribusiness Academy	Missouri	June	ages 14-18 (competitive application process)
AKSARBEN Stock Show	Grand Island, NE	September	all ages
Beekeeping Essay Contest		Due in February	all ages
Chicken Barbeque Contest	Sedalia	August	ages 14-18 (Winner advances to National Contest)
Cooking with Honey Contest	Sedalia	August	all ages
Dairy Cattle Judging Contest	Sedalia	August	all ages (top Senior team advances to Nationals)
Egg Demonstration Contest	Sedalia	August	all ages (top Senior advances to Nationals)
Fashion Revue	University of Missouri-Columbia	October	all ages
FilmFest	Missouri	all ages (competitive entries accepted)	

<i>Trips, Contests & Clinics, Continued</i>			
EVENT	LOCATION	TIME	AGES
International Topic Demonstrations	Sedalia	August	all ages
Missouri Grown Foods Contest	Sedalia	August	All ages
Missouri Youth Grading and Judging Contest and Clinic	University of Missouri-Columbia	March	all ages
Missouri State Fair	Sedalia	August	all ages
Pork Contest	Sedalia	August	all ages
Photo Corps	statewide	ages 12-18	application process
Sportfishing State Event	Callaway County	June	all ages
State Livestock Judging Contest	University of Missouri-Columbia	September	all ages (top Senior team advances to Nationals)
State Meats Judging Contest and Clinic	University of Missouri-Columbia	February/March	all ages (top Senior team advances to Nationals)
State Poultry Day	University of Missouri-Columbia	June	all ages (top Senior team advances to Nationals)
Wildlife Habitat Education Program (WHEP)	TBD	TBD	all ages (top Senior team advances to Nationals)
<i>Horse Events</i>			
Horse Public Speaking and Demonstration Contest	University of Missouri-Columbia	September	all ages (top Seniors advance to Nationals)
Horse Bowl Contest	University of Missouri-Columbia	April	all ages (top Senior team advances to Nationals)
Horse Judging Contest	National Equestrian Center, Lake St. Louis	February/March	all ages (top Senior team advances to Nationals)
Hippology Contest	University of Missouri-Columbia	April	all ages (top Senior team advances to Nationals)
Missouri 4-H Equine Tour	Multi-State Tour	May	ages 14-18
<i>Public Speaking</i>			
Public Speaking Academy	Central Methodist University, Fayette, MO	June	11-13 (limited enrollment)
Public Speaking Contests			
Cole County Public Speaking Contest	July	all ages	
State 4-H Public Speaking Contest	University of Missouri-Columbia	September/October	all ages
<i>Show-Me 4-H Wares</i> – members run a small business by showcasing and selling their 4-H products to the public			
Missouri State Fair	Sedalia	August	all ages (application process)
Cole County	Lincoln University	March-September	all ages (must register)

<i>Trips, Contests & Clinics, Continued</i>			
EVENT	LOCATION	TIME	AGES
<i>Shooting Sports</i>			
Fair Shooting Sports Match (Cole County)	United Sportsmen's Club	July	all ages (must meet requirements)
Missouri Shooting Sports Tournament	various Missouri locations	August/September	all ages (must meet requirements)
Other matches may be announced			

Scholarships

- Central Missouri Master Gardeners (list career paths), Due: February 28
- Missouri 4-H Foundation Post-Secondary Study Scholarship, Due March 1

More

<https://extension2.missouri.edu/programs/missouri-4-h/4-h-opportunities/4-h-prog>

- 4-H Afterschool Programs
- 4-H Ag Innovators Experience, teach awareness in agricultural careers and innovation, ages 14-18 (competitive application process), training=February & March,
- 4-H National Youth Science Day, activities for STEM education, statewide, all ages
- Community Service Opportunities:
 - 4-H Million Trees, all ages
 - 4-H Feeding Missouri, January-April, all ages
- Extension Council Youth Leadership, statewide, ages 14-17
- Global Experiences
 - Host Family, school year opportunities, summer opportunities
 - Travel to South Korea, Norway, Japan, Costa Rica, Romania, or Taiwan
- Marshall Mentor Program, statewide, ages 14-18
- Move Across Missouri, physical activity challenge, all ages, awards for all
- Robotics
 - Training for Volunteers
 - Numerous contests and challenges
 - Cole County 4-H partners with LabSpace Robotics at Capital Mall
- Show Me Character

4-H is a **community** of **young people** across America who are learning **leadership, citizenship** and **life skills.**



Section 9–Glossary of Terms

4-H Camp

Summer camp is one of the most valuable learning experiences a child can have! Young people need strong relationships and emotional skills to meet today's challenges. Through camping, young people learn independence, responsibility, how to get along with others and how to make the right decisions. Camp promotes cooperation, teamwork and respect for other people and our natural environment. Learn what camp can do for your child from famous people who have been there! Camp is much more than silly songs and campfires. Every child deserves a chance to go to camp.

Cole County 4-H members participate at Camp Clover Point (Lake of the Ozarks State Park) with youth from Callaway, Miller, Moniteau, and Osage counties.

Counselor Camp: At this special training camp, teen (14-18) applicants learn the skills to become effective Camp Counselors. Applications required.

Traditional Camp: Explore the exciting opportunities of 4-H! You will navigate the Confidence Course, paddle a canoe, shoot a bow and arrow, and make traditional crafts to take home. You will also enjoy all our old camp favorites like swimming, evening recreation and of course, campfires! Fee includes transportation from Jefferson City to Camp Clover Point.

Shooting Sports Camp: This three-day camp is designed to explore the world of 4-H Shooting Sports including archery, air pistol, and air rifle. Whether you are currently enrolled in a shooting sports project or want to learn more, this camp is for you. State certified 4-H Shooting Sports instructors will lead the way!

Canine Camp: This camp is designed for the dog lovers at heart. Bring your dog to camp and be ready to train it to great heights all while enjoying the camp traditions such as swimming, canoeing and campfire. Kids and dogs at all levels of skill are welcome! Registration is through 4HOnline (<https://mo.4honline.com>).

4-H Program Year

The 4-H year begins October 31 and continues through September 30.

Clover Kids

The 4-H Clover Kids program introduces youth, ages 5 to 7 years old, to a variety of 4-H experiences. 4-H Age is determined by youth's age by December 31 of 4-H program year.

Clubs

Cole County 4-H offers various types of clubs and groups to meet individual needs.

Community Clubs: Members join clubs in their community which meet year round. A club leader and volunteers organize and support the group. Members elect officers, plan educational programs, community service, and learning activities as a group.

Clover Kids: Introduces 5 to 7-year-olds to a variety of 4-H experiences. May be a separate club or project activity or combined in a community club structure.

Special Interest (SPIN) Clubs: Five or more members learn about a topic of interest and meet for a short-time. Led by volunteers and may include content experts. While the adult provides expertise and guidance, club members take an active role in planning and running their own activities. SPIN clubs reach out to youth and families with common interests and brings them together. They are a great way to introduce young

people to a specific topic or interest they might not otherwise have a chance to develop within a group setting.

4-H Afterschool: Typically meet afterschool hours with the support of school administration. May focus on a single subject. Can meet for a short period of time or full 4-H program year.

Demonstration

Cole County 4-H Members are required to give a demonstration to be a member-in-good-standing. A demonstration helps others learn how to do something and are one of the best methods of teaching others. It also helps the member gain poise and self-confidence to express yourself; a valuable life-skill.

Members can present their demonstration at Achievement Night for the chance to advance to the Missouri State Fair to give their demonstration. Some contests provide opportunity to advance to a national contest.

Electric Theater: Must use electricity in demonstration and present inside the Electric Theater at the 4-H Building. Eight eligible from Cole County. All Ages. Must not exceed 10 minutes.

General Demonstration: Formal presentation on how to do something. Eight eligible from Cole County. All Ages. Must be 5 to 10 minutes.

Working Demonstration: Youth work on a project while responding to fairgoers questions. A poster with topic and member name can be displayed on table while member works. Four eligible from Cole County. All Ages. Must work at table for 30 minutes.

More contests listed in
Section 8- FAQ's->OTHER OPPORTUNITIES->Trips, Contests, & Clinics

Member

Youth ages 8 to 18 officially enrolled in 4HOnline (<https://mo.4honline.com>) are considered members. Members are the voting entity in the club.

Premium (fair)

Money distributed to exhibitors who are members in good standing. For the Jefferson City Jaycees' Fair, exhibitors receive points based on the ribbon received as outlined in the fair book for each item/animal exhibited. Fair Board has an allotment of funds available and assigns a "price per point" for which premium checks are calculated. Check fair rules on the website (<https://extension2.missouri.edu/counties/cole/4-h>).

Project

Members enroll in projects at the beginning of the 4-H program year based on their personal interests and the availability of project leaders for their club. Not all projects are available to all clubs. Check with your club leader to find out what projects your club has available. Enrolling in a project is a commitment to follow the curriculum, participate in project activities with your group or on your own, and have something to show for your effort.

Projects allow for learning a new skill, expanding your knowledge of a topic, as well as, developing life skills such as responsibility, citizenship, caring, and sportsmanship.

Regional Energizer

An event planned by staff in the East Central 4-H Region to enhance leadership skills, introduce/expand on project curriculum, and provide volunteer learning opportunities. Usually held between January and March at various locations in the East Central Missouri 4-H region.

Volunteer

An adult (18 or older) who has enrolled in 4HOnline (<https://mo.4honline.com>), completed a background check, and completed Volunteer Orientation. Volunteers can be project leaders, club leaders, representative on a board, provide transportation for members, or help at club and project meetings. Recognized volunteers are covered by Missouri 4-H Accident Insurance program and University of Missouri's Risk Liability insurance policy.

Weigh-in

Market animals (beef, goats, sheep, and swine) must weigh-in their project animal(s) at the designated time as announced by the Fair Board and return paperwork with appropriate signature to the Extension Office to be eligible to sell, considered for sale champion/in-county awards, or receive premiums. This is a requirement for completing a market livestock project.

