



UNIVERSITY OF MISSOURI EXTENSION

# Barton County

# 2023 Annual Report

801 E. 12<sup>th</sup> Street  
Lamar, MO 64759  
417-682-3579

**SERVE  
MISSOURI.**

**DELIVER  
MIZZOU.**

University of Missouri Extension does not discriminate on the basis of race, national origin, sex, sexual orientation, religion, or age, disability or status as a Vietnam era veteran in employment or programs.

**M** Extension  
University of Missouri

an equal opportunity/ADA institution



Office of Extension  
and Engagement  
*University of Missouri*

**OFFICE OF THE VICE CHANCELLOR  
FOR EXTENSION AND ENGAGEMENT**

108 Whitten Hall  
Columbia, MO 65211

PHONE 573-882-2394

EMAIL: [cchiggins@missouri.edu](mailto:cchiggins@missouri.edu)

December 2023

Dear county commissioners and friends of MU Extension and Engagement,

Thank you for your important partnership with the University of Missouri Extension this past year.

I want to highlight three areas that address needs you helped us identify.

You may recall that the FY 23 state budget provided a one-time \$5 million infusion to MU Extension for growth. Of that, we allocated about \$3 million for field faculty in the areas of agriculture, 4-H, health/human development and business and community development.

Through a dedicated hiring effort, and thanks to that allocation, we have hired 168 new employees since November 2022. That includes 72 academic/faculty members, most of whom are field specialists in a priority area noted above, and 96 staff members (e.g., office administrators, youth and food and nutrition associates, etc.).

We also returned more faculty to local program delivery that best serves your county's needs, while preserving the partnership and relationship building work you value. Our extension and engagement specialists focus full-time on that work as they serve their assigned multi-county groups. Currently, 19 have been hired, with two more in the pipeline.

Finally, we are prioritizing our work with county extension councils. In the new role of partnership and council development director, Lorin Fahrmeier focuses on strengthening council representation and governance. This role will build stronger links with regional, educational and campus leadership to better identify and address local priorities.

At the UM System level, our engagement work across four universities and with leaders across the state makes a difference in areas of greatest need: broadband, workforce development, health access, food security and healthy futures for our youth.

Your county annual report shows what we are accomplishing together as we Serve Missouri and Deliver Mizzou. We look forward to strengthening that partnership with county commissioners and community stakeholders in the coming year.

Sincerely,

Chad Higgins, PhD  
Interim Vice Chancellor, MU Extension and Engagement  
Chief Engagement Officer, UM System



# Who we are

## Faculty and staff



### *Reagan Blueel*

FIELD SPECIALIST IN DAIRY

### *Elaine Davis*

YOUTH PROGRAM ASSOCIATE

### *Patrick Davis*

FIELD SPECIALIST IN LIVESTOCK

### *Micah Doubledee*

FIELD SPECIALIST IN AGRONOMY

### *Katie Fields*

BUSINESS DEVELOPMENT

### *Theresa Fossett*

EFNEP ASSOCIATE DIRECTOR

### *Sarah Havens*

REGIONAL DIRECTOR

### *Amanda Livingston*

COUNTY OFFICE SUPPORT STAFF

### *Robert McNary*

FIELD SPECIALIST IN 4-H YOUTH DEVELOPMENT

### *Amy Patillo*

FIELD SPECIALIST IN LABOR & WORKFORCE DEVELOPMENT

### *Lisa Robinson*

FIELD SPECIALIST IN REGIONAL ECONOMIC DEVELOPMENT

### *Kyleigh Brown*

FIELD SPECIALIST IN HUMAN DEVELOPMENT

### *Allen Waldo*

MISSOURI APEX ACCELERATOR SPECIALIST

## Council members

Greg Moyer, Chairman

Evan Clements, Vice-chairman

Mary Clark, Secretary

Eva Buchanan, Treasurer

Judd Chesnut

Deana Cook

Paul Crabtree

Brenda Frieden

Lee Howard

Cyndy Johnson

Dean McKibben

Alan Ray

Ben Reed

Jack Stahl

Jan VanGilder

Angela Weber

Ashlyn Ball



## County commissioners

David Johnson, Presiding Commissioner

Ben Reed, District One Commissioner

Jeff Tucker, District Two Commissioner

# Budget and more

## Appropriations budget

### Income

County Appropriations 86,700.00

**Total Income 86,700.00**

### Expenses

Salaries/Benefits 61,537.75

Travel 4,914.50

Postage 835.47

Telephone 2,457.25

Advertising/Subscriptions/Dues 196.58

Publications/Printing/Advertising 147.44

Office Supplies/Service 2,727.55

Utilities 6,388.85

Insurance 2,162.38

Misc./Petty Cash 98.29

Ext Council Election 122.86

Ext Annual Meeting 196.58

Capital Repairs 4,717.92

Furniture/Equipment 196.58

**Total Expenses 86,700.00**

## Return on investment

New Parking Lot Donation 40,000.00

## Barton County partners

Larry Coose, Net Vision

Barton County Chamber of Commerce

Lamar Democrat

Lamar School District

Liberal School District

Golden City School District

The Staff at the Barton County Extension office would like to thank the council, volunteers, and county commissions for your unwavering support in 2023. We look forward to our continued success together in 2024!

## MU Extension is a unique funding partnership.

Extension funding is a three-way partnership of federal, state and county government. Federal and state money, through the University of Missouri system, pay professional staff salaries, training costs, computers and communication equipment. County funds support the local office, secretarial and youth assistant salaries, staff mileage and council expenses.

The Barton County Extension Council would like to express our appreciation to the Barton County Commissioners for their continued support of extension programs.



## Local Support

Did you know you can donate directly to Barton County Extension with a gift to be used immediately or as an endowment contribution for long term efforts. Monies put into the endowment are left forever to earn interest with the county office benefiting each year. You can also direct your donation to a specific program such as 4-H or Master Gardeners.

# UM System County Impacts

2024 UM Systemwide Impact Data Sheets

## Barton County



University of Missouri System  
COLUMBIA | KANSAS CITY | ROLLA | ST. LOUIS

### UM System Footprint in the county in 2023



#### FY23 county students

##### 30 students

- 25 Undergraduates
- 5 Graduate and professional students
- 24 Full-time students
- 6 Part-time students



#### County breakdown

##### MU

- 20 students
- 105 alumni
- 3 employees

##### UMKC

- 5 students
- 32 alumni
- 1 employee

##### Missouri S&T

- 4 students
- 17 alumni
- 1 employee

##### UMSL

- 1 student
- 4 alumni
- 0 employees



#### County properties and offices

MU Extension in: Barton County



County population: 11,712



#### County employees and retirees

##### 5 people employed by UM

- 5 Campuses



#### County alumni

##### Selected school alumni

- 2 Medicine
- 9 Nursing
- 6 Health Professions
- 1 Dentistry
- 6 Pharmacy
- 1 Optometry
- 2 Veterinary Medicine
- 36 Agriculture
- 22 Engineering
- 11 Law

##### Alumni teaching K-12

- 4 teachers
- 2.6% of all district teachers



#### County services provided

##### Health care (FY23)

- 29 in-state patients seen at MU Health Care, with \$19,270 of uncompensated care
- MU Health Care's Missouri Telehealth Network recorded 6 visits to 3 patients having ZIP codes associated with the county

##### Extension (2022)

- 6,602 Total educational contacts from MU Extension to residents of the county, including:
- 1,706 contacts related to productive farming, better gardening, and managing natural resources
- 4,865 contacts related to healthy eating and aging, strengthening families, personal finance, or youth development
- 31 contacts related to starting businesses, developing community leaders, or renewing the local economy



# UM System County Impacts

2024 UM Systemwide Impact Data Sheets

## Barton County



University of Missouri System

COLUMBIA | KANSAS CITY | ROLLA | ST. LOUIS

## UM System Statewide Footprint

### Economic and Community Development Highlights

- In 2022, Business Development Specialists worked with small businesses and entrepreneurs statewide to create or retain 81,645 jobs.

**\$3.1**  
billion

For every dollar invested from 2019 to 2021, the MU Extension Business Development Program has returned \$133 in economic impact for its clients by increasing sales more than \$1.6 billion. For a total impact of \$3.1 billion, the program has generated more than 37,000 jobs and attracted nearly \$451 million in capital investments and \$1.5 billion in government contracts.

- Between FY17 and FY22, UM System brought Missouri more than \$1.46 billion in federal and private research funds, funded primarily from outside the state, but spent within the state.



In FY23, UM System was issued 33 patents and filed 61 new U.S. patent applications.

- In FY23, the UM System awarded 805 design and construction project contracts throughout Missouri, for a total investment of \$279.2 million in the state.



In FY23, to improve access to medical and health related services, MU Health Care's Missouri Telehealth Network's Show-Me ECHO program provided 18,381 hrs of case-based instruction to 2,938 learners located in 112 of 114 Missouri counties and the city of St. Louis.

### Education and Training Provided



41,992 police, fire fighters, and medical professionals attending continuing education (2022)



Agriculture and natural resource programs served 174,692 farmers and related businesses (2022)

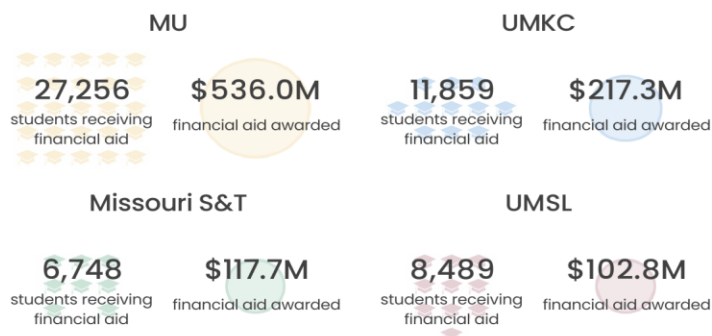


311,749 youth and stakeholder educational contacts in 4-H clubs, schools, camps and other programs (2022)

### Education Highlights

#### FY23 Financial Aid Awards

In FY23, 67.3% of the UM System's 80,702 students received financial aid totaling \$973.7 million



UM System's MOREnet (Missouri Research and Education Network) provides internet connectivity, access, support and training to 58 higher education institutions (230,000 students), 485 K-12 school districts (832,000 students) and 132 public libraries (serving nearly 3 million Missourians) in 2022.

- UM System awarded 50.5% of the 32,098 Bachelor's or higher degrees awarded by Missouri four-year public institutions in 2022-23.
- UM System awarded 36.6% of the 1,935 research doctorates and 26.9% of the 3,593 professional doctorates awarded by Missouri public and not-for-profit private institutions in 2022-23.
- In FY23, UM System's \$37.9 million in National Science Foundation (NSF) grants represented 88.3% of all NSF grants made to Missouri public colleges and universities.
- In 2023, over 10,900 Missourians accessed [mobroadband.org](https://mobroadband.org), part of the UM System Broadband Initiative which helped the statewide build-out of high-speed internet infrastructure. MU Extension also supported residents in making individual challenges to the FCC that resulted in \$810,000 in additional funding for the state of Missouri.

**Supporting the University of Missouri is an investment in the future of Missouri.**

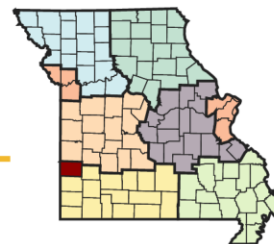
The university advances Missouri citizens and communities through its mission of teaching, research, public service, and economic development across our four campuses and University of Missouri Extension.

Prepared in December 2023, based on the best available and most recent data. Data Sources include: Missouri Office of Administration • UM IR • MU Institute for Public Policy • Center for Applied Research and Engagement Systems (CARES) • MU • UMKC • Missouri S&T • UMSL • UM System • UM Health Care • MU Extension • US Census Bureau • US Dept. of Health and Human Services • National Science Foundation



# Missouri Grand Challenges: Local Solutions

## BARTON COUNTY



### Knowing Missouri's Needs

MU Extension asked Missourians to share the greatest challenges they and their communities face.

We heard that feedback and made big changes in the way we work with council and local partners to improve lives. Locally, a network of county engagement and subject matter specialists now share MU's knowledge, research and engagement, targeting programs, information and assistance in:

- agriculture and environment
- youth and family
- business and community
- health and safety

**For each grand challenge, MU Extension and Engagement targets a specific gain by 2023:**



#### Economic opportunity

Increase MU Extension and Engagement's economic impact to the State of Missouri from \$1 billion to \$1.5 billion overall, and from \$88 billion to \$100 billion in agriculture, the top economic sector



#### Educational access and excellence

Increase participation in postsecondary education from 66% to 70%



#### Health and well-being

Improve Missouri's health ranking from 40th to 35th in the nation

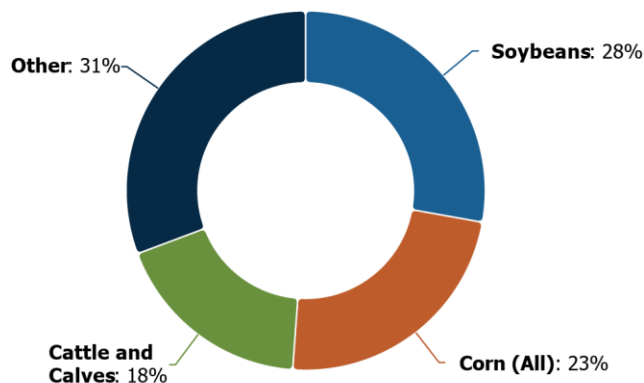
### Knowing Local Challenges



#### CHALLENGE 1: Economic Opportunity: *Agricultural Economics*

#### Leading Agricultural Products

Total Commodity Sales: \$132,044,000



Data Source: US Department of Agriculture, National Agricultural Statistics Service, [Census of Agriculture](#). 2017.

#### Net Farm Income

Net farm income (total sales, government payments, and other farm-related income minus total farm expenses) reflects the strength of the local agricultural community and can be an important measure for lenders and policy makers. The report area had a combined net farm income of \$46,121,000 in 2017, an average of \$53,319 per farm. This compares favorably to the statewide average farm income of \$29,485.

Report Area	Total Farms	Average Farm Income
Barton	865	\$53,319
Missouri	95,320	\$29,485

Data Source: US Department of Agriculture, National Agricultural Statistics Service, [Census of Agriculture](#). 2017.



## CHALLENGE 2: Educational Access and Excellence: *Early Childhood Education*

### Access to Early Childhood Education

Head Start is an early childhood education program for at-risk children through age 5. Families utilizing Head Start have better success meeting developmental goals and achieving economic stability. In 2018, there were 3 Head Start programs in the report area, or 35.93 per 10,000 population. Access to head start is higher in this area than in the state.

#### Head Start Programs, Rate (Per 10,000 Children Under Age 5)

35.93

Barton

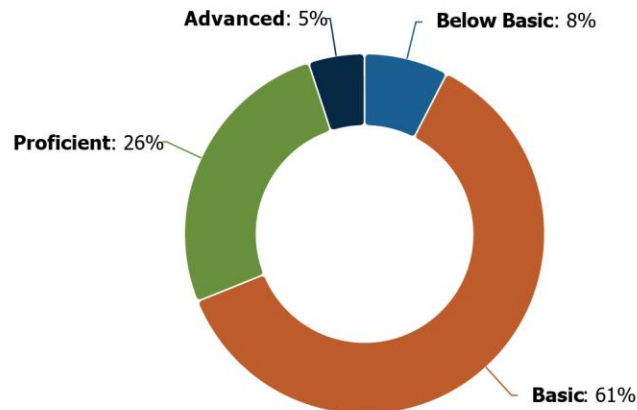
Missouri

11.76

Data Source: US Department of Health & Human Services, [HRSA - Administration for Children and Families](#). 2022.

### English Language Arts Proficiency

Starting in the 4th grade, public schools emphasize proficiency in reading and reading comprehension. The ability to comprehend becomes the foundation to find and process information in later years and it is important to prevent children from falling behind. Of the 130.00 fourth graders tested in 2018, the known total number of students who had a basic level of English Language Arts was 73.00. The number tested as below basic was 9.00, basic was 73.00, proficient was 31.00, and advanced was 6.00.



Data Source: [Missouri Department of Elementary & Secondary Education](#). 2022.



## CHALLENGE 3: Healthy Futures: *Healthy Aging*

### Fall Injuries

Falls are the leading cause of injury-related fatality and hospitalization among older adults in the United States. Between 2013 and 2015, adults over age 65 in the report area had 455 hospital or emergency room admissions for fall and jump-related injuries. The rate of these injuries was 6,142 per 100,000 population, which is higher than the state rate of 5,396. Falls hospitalizations have improved since the 2001-03 time period when the rate was 9,015.

#### Rate per 100,000, 2019-2021

6,142

Barton



Missouri

5,396 😞

Data Source: US Department of Health & Human Services, [Missouri Department of Health & Senior Services](#). 2019-2021.

### Primary Care Providers

Older adults make up a historically large percentage of the U.S. population, and meeting the healthcare needs of an aging population can be challenging. In the report area, there are approximately 4 primary care physicians (MDs and DOs) to serve the area's 2,423 residents over the age of 65. The patient-provider ratio in the report area is 606:1, which means there is 1 provider for every 606 older adults. The ratio of adults to providers in the report area is higher than the state average of 242:1, which means there are fewer providers per person in this area.

#### Ratio (Population to Providers)

606:1

Barton

Missouri

242:1

Data Source: US Department of Health & Human Services, Health Resources and Services Administration, [HRSA - Area Health Resource File](#). December 2023.





## CHALLENGE 4: Agricultural Growth & Stewardship: *Agricultural Economy*

### Jobs Derived

Missouri has a diverse agriculture industry, strong in crops and livestock, as well as food and forestry processing industries. These industries remain a significant part of Missouri's economy, supporting more than 1 in every 10 jobs, on average. In 2021, agriculture, forestry, and related industries in Missouri were estimated to contribute: 456,618 jobs, \$93.7 billion in output and \$31.8 billion in household income. [Learn more about Missouri Agriculture's Economic Impact.](#)

#### Percent of Jobs Derived from Agriculture

28.6%

Barton

Missouri

23.55%

Data Source: Missouri Department of Agriculture, [Missouri Agricultural and Small Business Development Authority](#). 2021.

### Value Added

Value-added agriculture refers to production, manufacturing, marketing or other services that increase the value of primary agricultural commodities. In 2021, the total value-added derived from agriculture, forestry and related economic activity was an estimated \$34.9 billion. Meat processing, food processing, animal and pet food manufacturing, and crop production and related industries are Missouri's top value-added products: \$9.5 billion and 155,425 jobs from livestock production and related industries alone. [Learn more about Missouri Agriculture's Economic Impact.](#)

#### Percent of Total Value Added from Agriculture

28.5%

Barton

Missouri

21.98%

Data Source: Missouri Department of Agriculture, [Missouri Agricultural and Small Business Development Authority](#). 2021.





MU EXTENSION **Serves MISSOURI and Delivers MIZZOU**  
through credible statewide programs  
**Missouri 4-H for ages 8 – 18**

## BARTON COUNTY 4- H "Reaches All Ages"

Barton County 4-H Youth Development Programs have experienced 4-H expansion and growth in Barton County. County data reports that Barton County 4-H Youth Development has reached 1,246 youth in traditional 4-H club units and special interest groups organized throughout Barton County.

4-H Personal Development offers all members the opportunity to learn and experience personal growth through interactive activities, real life experiences, and communication groups. 4-H events include Barton County Achievement Day and SW 4-H Camp. "4-H Learning by Doing" process offers youth the ability to learn and use practical life skills as they to grow through personal development.

4-H Project Excellence is awarded during the annual 4-H Recognition Banquet where 4-H Members submitted 109 4-H Project Report forms. 46 youth were recognized for 4-H County, State, Regional and National levels of Excellence. All 4-H clubs met their goals of achievement through project exhibition. The 2023 exhibition of 4-H project work included 30 exhibits to the Missouri State Fair, 78 items entered at Ozark Empire Fair and 228 small exhibits in the Lamar Free Fair.

4-H Leadership and Community Service - Barton County 4-H members have gained valuable leadership and life skills donating over 1000 hours of service through youth /adult community partnerships

Barton County 4-H envisions a program in which youth and adults learn, grow and work together for positive change in the community. The Barton County 4-H program is proud to include home school families as part of the growth and outreach with programs. 4-H youth are "Learning by Doing", achieving life skills that are incomparable to others. Thank you to the Community for continued dedication and contribution toward our mission.

### Legend



Agricultural Growth  
& Stewardship



Economic  
Opportunity



Educational  
Access &  
Excellence



Health  
& Well-Being



# Barton County

## Missouri 4-H

### Local Impact

**4-H nontraditional programs** included STEM (science, technology, engineering, math) spin clubs in Liberal, MO. and Lamar, MO and Rural Safety Day partnership with FFA Students for Lamar and Liberal students. The 4-H Healthy Living project features 4-H Spin Blender Bike in the Lamar Elementary and Golden City Health Fair which gives students hands on activity with exercise and healthy food choices. The Character Critter program in Lamar Head Start students, ages 3-5 years old, highlight learning with positive rewards through family stories and activities. The 4-H Futures Program at the Lamar Career and Technical Center is designed to open doors to high school students as they plan for the future, through educational opportunities of skilled training or college.







## COMMUNITY SERVICE CIVIC ENGAGEMENT LEADERSHIP



Barton County 4-H Youth are active with the Missouri Community Betterment where youth were selected to receive the MCB JC Smith Youth Group of the Year. Projects completed included Lauarann Robertson Nature Trail update and Mini reading and mini food pantries libraries



Barton County 4-H teen Leaders were presented an FCS Financial Grant of \$500.00 to work on a community service project targeting food Insecurity. This community service project was planned to build small Food pantries in the area for those in need to access as needed.

The Food Mini Pantry goal was to alleviate food insecurity, "Feel free to take food as needed, donate back if you can". The Reading Mini Pantry goal encouraged reading for all ages, "Take a Book, Read A book, Return or Donate a Book Back". The location of both pantries are on local church property, highly visible with 24 hour street light to discourage vandalism.



Barton County 4-H, Lamar Community Betterment, and Walmart partnered to collect school supplies for Lamar, Liberal, and Golden city schools in Barton County. Each school supplied a short bus on the parking lot where volunteers loaded school supply donations. Monetary donations were also accepted. This yearly project benefits students who can not afford basic school supplies. The donations are sent directly to the school so teachers have immediate supplies to help students and families. This service project is a great partnership for the community.



# Barton County

## Missouri 4-H

### Local Impact



The 4-H SNAC Program using the Kids in the Kitchen curriculum shared with Liberal 4<sup>th</sup> and 6<sup>th</sup> grade students. Golden City Schools expanded the SNAC program to include grades 3<sup>rd</sup>, 4<sup>th</sup> and 5<sup>th</sup>. 4-H Student Nutrition Advisory Council (SNAC) initiative is a program developed with the University of Missouri Extension's Family Nutrition Education Program and Missouri 4-H. The club, which has no cost to members, focuses on teaching nutrition along with leadership and citizenship skills that are central to 4-H. SNAC clubs across Missouri are being established to reach new youth and families through partnerships with nutrition education programs, schools, and other nutrition education programs for underserved youth. All students were giving opportunity to prepared healthysnack options in classroom





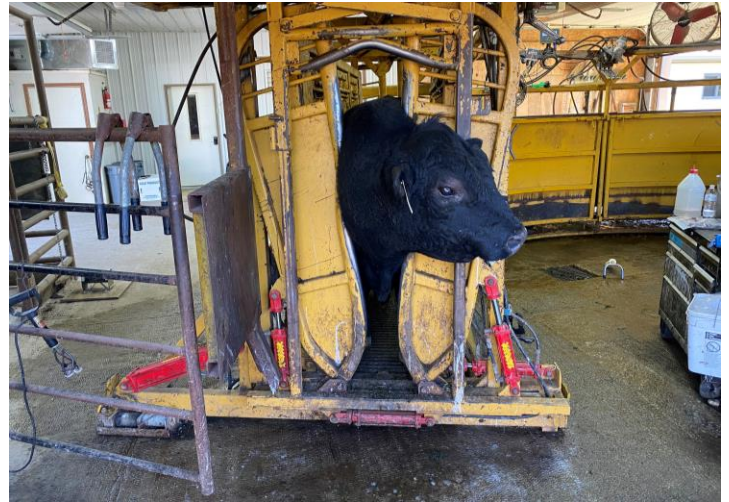
# Barton County

## Agriculture and Environment

### Local Impact

#### Bull Breeding Soundness Exam Days

This program is a cooperation with SW MO Veterinarians, MU Extension, and pharmaceutical companies. Bull owners that schedule breeding soundness exams (BSE) for their bulls are educated by MU Extension Livestock Field Specialist on the BSE, body condition scoring, foot scoring, genomic testing, and proper management of the bull as they enter the breeding season. Furthermore, due to the cooperation with pharmaceutical companies the bull producer is eligible for rebates on vaccinations during the events which helps in educating bull owners to make sure bulls are vaccinated properly as they enter the breeding season. These bull BSE days are held in the spring and fall as bull owners prepare for each upcoming breeding season. In the spring there were 3 cattle producers participating where 17 bulls were tested and 1 bull failed. In the fall, there was 1 cattle producer participating in which 2 bulls were tested and 0 bulls failed. If the cattle producer replaces the 1 bull that failed, the producer should have optimum pregnancy rates which leads to optimum cattle operation productivity.



#### Barton County MO Cattlemen's Association Meeting

At a monthly meeting I provided education to 22 people on cattle reproductive management as cattle producers enter the winter breeding season.



#### MO Show Me Select Replacement Heifer Program

This program educates cattle producers in cattle management and heifer development. Furthermore, this program leads to the development of a value-added heifer that if sold can lead to optimum profitability of a cattle operation. During the year, two Barton County cattle operations had heifers enrolled in the program. These cattle operations enrolled 37 heifers, sold 18 heifers with a gross revenue of \$51,400.



*Livestock Specialist, Patrick Davis*



## Show Me Youth Ag Academy

During the spring, youth were educated in cow and bull management. This was done as part of the *Show Me Youth Ag Academy* at the Lamar Career Technical Center which is part of Lamar Schools. Youth were educated during classes on 2 days in the spring discussing cow management and bull management prior to the breeding season. In addition, at one of the classes there was hands on demonstrations of bull management where youth worked with the operation's veterinarian to conduct bull breeding soundness exams on the bulls to make sure they were ready for the breeding season. There were seven Barton County youth educated during the two classes.



## Barton County Schools Community Safety Net Youth Rural Safety Education Classes

This program was a cooperation between Community Safety Net, MU Extension, Barton County Schools, and local businesses to provide rural safety education to youth. 191 youth were educated on rural safety through safety stations led by high school ag students at the respective schools. In addition, MU Extension worked with Community Safety Net and through local business donations, provided the youth at Barton County schools with rural safety books to aid in education.



## Lamar Fair Youth Livestock Judging Contest

This contest was held during the Lamar Fair. MU Extension, with the help of the Lamar High School Ag Teacher and local volunteers, conducted the contest to allow youth to compete and gain knowledge in livestock evaluation. Youth evaluated classes of cattle, swine, sheep, and goats and gave oral presentations on one or two classes depending on their age. Skills and knowledge gained in this contest will help the youth as they continue to compete in youth livestock activities and other aspects of their life. 24 Barton County youth participated in this event.



*Livestock Specialist, Patrick Davis*



# Barton County

## Agriculture and Environment

### Local Profiles and Stories



### Sheep & Goat Field Day

Forty-nine (49) producers attended November 17<sup>th</sup> at Mt. Vernon, MO. Three (3) producers were from Barton County. They learned about production and financial management for sheep and goat farms. Participants also learned how to perform FAMACHA and 5-point checks.

Topics included: Forage & Pasture Management, Integrated Parasite Management Control, Economic Impact of Low Performing Animals, FAMAHCA system & 5-point Check lecture & hands on certification.

*Jennifer Lutes, Ag Business Specialist*

“Very relevant, everything directly applied to our goat operation!”



# Barton County

## Agriculture and Environment

### Local Impact

#### Farm Visits and County Office Interactions

University of Missouri Field Specialists in Agronomy, Dairy, Livestock and Ag Business offer local farmers and producers individualized education via in-person interaction, phone calls, email, and farm visits to answer agricultural related questions. This education helps farmers and producers make important management decisions for their farms and businesses and helps improve the overall management of Missouri's important natural resources and agriculture production.



**Agronomist Micah Doubleddee demonstrating how to properly sample hay for hay testing.**

#### Soil Testing and Plant Testing

University of Missouri County Extension offices offer soil testing and plant testing via the soil testing lab in Columbia, MO for Missouri landowners, farmers, gardeners, commercial and agricultural producers. The results from soil tests give producer insight into the pH level, available phosphorus, potassium, calcium and magnesium; organic matter; acidity and cation exchange of their soil. Soil reports also offer educational advice and recommendations from the soil lab and local extension specialists to help producers make important agricultural decisions regarding soil fertilization for intended crops and potential yield goals. In 2023, 105 soil test were submitted through the Barton County office. Also, 1 plant sample was submitted to the disease diagnostic lab.



*Micah Doubleddee, Agronomy Specialist*



# Barton County

## Agriculture and Environment

### Local Impact



### Community Engagement

#### Lamar Free Fair

University of Missouri Field Specialists interact with the public to help support local community events. This is a picture of the Tractor Show at the Lamar Free Fair in Barton County. Community engagement helps remind locals of the services that the University of Missouri Extension can provide. Agronomist Micah Doubleddee spent time interacting with local tractor owners and visitors and provided free water to participants.

### Tractors at the Lamar Free Fair Tractor Show

#### Pesticide Applicator Training

University of Missouri Extension provides initial pesticide applicator training and recertification of Missouri's agricultural producers that desired a private pesticide applicator license. This training is for producers wanting to purchase and apply restricted-use pesticides. Private Pesticide Applicator Training program is a vital educational program that focuses on providing knowledge of the safe and proper use of agricultural pesticides as well as the legal requirements associated with application. During 2023, Jill Scheidt along with other specialists and office personnel provided in-person and online pesticide applicator training classes and 68 people from Dade County participated.

*Micah Doubleddee, Agronomy Specialist*

# Barton County

## Business and Community

### Local Impact

#### Missouri Small Business Development Center (SBDC)

The Missouri SBDC at Missouri Southern State University provides support to Barton County entrepreneurs and small business owners through 1:1 assistance and training. Over the course of 2023, our office met with clients to discuss a wide range of topics including:

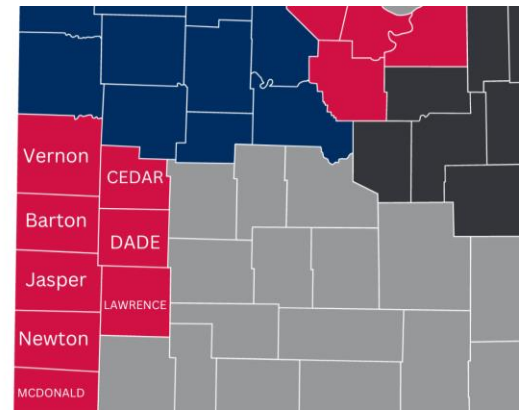
- Starting a business
- Cash flow management
- Business loan refinance and expansion
- Business relocation
- Financial planning
- Marketing and social media strategy
- Purchasing a business
- Childcare grant application assistance
- International expansion opportunities
- Technology commercialization

Through leveraging regional partnerships, we are able to offer the following:

- Innovate SOMO
- Early-Stage Boot Camp
- Government contracting assistance
- Identification of grant opportunities effecting businesses due to imports

#### KEY OUTCOMES

- ✓ 19 Business owners received multiple 1:1 consulting sessions regarding their small businesses
- ✓ 1 New business started
- ✓ 1 New jobs created
- ✓ 53 Jobs retained
- ✓ 1 Government contracts awarded to small businesses in Barton County
- ✓ 8 Training event attendees



The Missouri SBDC at Missouri Southern State University serves 8 counties in south west Missouri (highlighted).

#### Learn more about our latest programs and training

[sbdc@mssu.edu](mailto:sbdc@mssu.edu)

417-625-3182

[www.mssutrainig.com](http://www.mssutrainig.com)

#### REGIONAL HIGHLIGHTS

**\$502**

Increase in sales for client companies through the assistance of the SBDC

**\$18,600**

Government contracts secured through the assistance of APEX (formerly MO PTAC)

**\$2,300**

Capitalization secured through the assistance of the SBDC

Impact data is client verified and obtained by approximately 30% of clients annually for the statewide network. The Missouri SBDC is funded in part through a cooperative agreement with the U.S. Small Business Administration





MU EXTENSION **Serves MISSOURI and Delivers MIZZOU**  
through credible statewide programs  
**Community and Professional Health Education**

Agriculture and Environment

The Supplemental Nutrition Assistance Program Education (SNAP-Education or SNAP-Ed) brought \$10,874,798 in federal funds to Missouri. During FY2023, Missouri's SNAP-Ed program reached over 78,000 Missourians through direct classroom education. Each person participated in an average of 6 hours of education totaling over 15,000 hours. In addition, an additional 760,135 persons participated in indirect education. Direct and indirect education resulted in over 1.8 million total contacts with Missourians.

A total of 105 participants were from Barton County.

Participants in SNAP-Ed learn the importance of making healthier meals and snack choices, eating breakfast more often, are more willing to try new foods, increase their physical activity, and make healthier food choices. Those who practice healthy eating and are physically active are more likely to contribute to a healthy labor force and enjoy a high quality of life throughout the lifespan.

This vital programming effort also reduces healthcare costs over the participant's lifetime, saving taxpayer money in reduced public healthcare benefits and insurance premiums.

### **Schools/Agencies served:**

Barton County - Economic Security Corp of the Southwest Area (ESC)

Barton County Health Department



### **Legend**



Agricultural Growth  
& Stewardship



Economic  
Opportunity



Educational  
Access &  
Excellence



Health  
& Well-Being