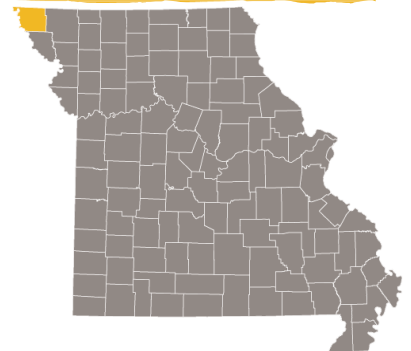




UNIVERSITY OF MISSOURI EXTENSION

Atchison County

2023 ANNUAL REPORT





Office of Extension
and Engagement
University of Missouri

**OFFICE OF THE VICE CHANCELLOR
FOR EXTENSION AND ENGAGEMENT**

108 Whitten Hall
Columbia, MO 65211

PHONE 573-882-2394

EMAIL: cchiggins@missouri.edu

December 2023

Dear county commissioners and friends of MU Extension and Engagement,

Thank you for your important partnership with the University of Missouri Extension this past year.

I want to highlight three areas that address needs you helped us identify.

You may recall that the FY 23 state budget provided a one-time \$5 million infusion to MU Extension for growth. Of that, we allocated about \$3 million for field faculty in the areas of agriculture, 4-H, health/human development and business and community development.

Through a dedicated hiring effort, and thanks to that allocation, we have hired 168 new employees since November 2022. That includes 72 academic/faculty members, most of whom are field specialists in a priority area noted above, and 96 staff members (e.g., office administrators, youth and food and nutrition associates, etc.).

We also returned more faculty to local program delivery that best serves your county's needs, while preserving the partnership and relationship building work you value. Our extension and engagement specialists focus full-time on that work as they serve their assigned multi-county groups. Currently, 19 have been hired, with two more in the pipeline.

Finally, we are prioritizing our work with county extension councils. In the new role of partnership and council development director, Lorin Fahrmeier focuses on strengthening council representation and governance. This role will build stronger links with regional, educational and campus leadership to better identify and address local priorities.

At the UM System level, our engagement work across four universities and with leaders across the state makes a difference in areas of greatest need: broadband, workforce development, health access, food security and healthy futures for our youth.

Your county annual report shows what we are accomplishing together as we Serve Missouri and Deliver Mizzou. We look forward to strengthening that partnership with county commissioners and community stakeholders in the coming year.

Sincerely,

Chad Higgins, PhD
Interim Vice Chancellor, MU Extension and Engagement
Chief Engagement Officer, UM System

Who we are

Faculty and staff



Jim Crawford

Field Specialist in Agricultural Engineering &
Director of Graves-Chapple Extension & Education
Center

Gwenlyn Funk

Field Specialist in Horticulture

Annette Deering

Field Specialist in 4-H Youth Development

Denice Ferguson

Field Specialist in Agricultural Business

Wayne Flanary

Field Specialist in Agronomy

Randa Doty

Extension and Engagement Specialist

Amie Schleicher

Field Specialist in Livestock

Katie Pemberton

Field Specialist in Human Development

Pamela Morriss

Youth Program Associate/ Office Support

Regina Ripley

Nutrition Program Associate

Debbie Bennett

Field Specialist in Nutrition and Health

Jackie Spainhower

Field Specialist in Community Development

Stacey Steffens

Northwest Regional Director

Council Members

District 1 - Tarkio School District

- ✓ Blu Dow
- ✓ Glenn Scott
- ✓ Mark Staten- Secretary
- ✓ Kevin Sundermann
- ✓ Jayme Wood

District 2 – Rock Port School District

- ✓ Chris Gebhards- Treasurer
- ✓ Curt Graham
- ✓ Ben Lucas
- ✓ Devon Sons- Vice Chair
- ✓ Dixie Teten

District 3 – Fairfax School District

- ✓ Trevor Brown
- ✓ Dawn Davis
- ✓ Ben Rogers
- ✓ Miles Smith- Chair

County Commissioners



Curt Livengood

Presiding Commissioner

James Quimby

Associate Commissioner, North District

Richard Burke

Associate Commissioner, South District

Suzette Taylor

County Clerk

Budget and more

Appropriations budget

Income

County Appropriations	50,000.00
Total Income	\$50,000.00

Expenses

Salaries/Benefits	34,635.07
Travel	2,497.99
Postage	534.47
Telephone	503.61
Office Supplies/Service	2,889.16
Utilities	4,169.44
Insurance	1,909.46
Rent	1,200.00
Repairs/Elections/Advertising	395.87
Total Expenses	\$48,735.07

Contact Us:

University of Missouri Extension in Atchison County

201 Highway 136 East
Rock Port, MO 64482
660-744-6231

AtchisonCo@missouri.edu
Office Hours – Monday - Friday
8:00 a.m. - 12:00 p.m.

Available by appointment after noon

UM System footprint in Atchison County

- ✓ 4,232 total educational contacts from MU Extension to residents of the county, including:
- ✓ 1,221 contacts related to productive farming, better gardening, and managing natural resources
- ✓ 2,798 contacts related to healthy eating and aging, strengthening families, personal finance, or youth development
- ✓ 213 contacts related to starting businesses, developing community leaders, or renewing the local economy
- ✓ Atchison County MU alumni:
 - 43 – Agriculture
 - 13 – Engineering
 - 10 – K-12 teachers (9.8% of all district teachers)
 - 10 – Pharmacy
 - 10 – Nursing
 - 9 – Health Professions
 - 4 – Law
 - 2 – Dentistry
 - 1 – Veterinary Medicine
 - 1 – Medicine
- ✓ 27 students
 - 24 Undergraduates
 - 3 Graduate and professional students
 - 20 Full-time students
 - 7 Part-time students
- ✓ 6 people employed by UM
 - 5 Campuses
 - 1 MU Health Care
 - UM salary and retirement income: \$225,689
 - UM state tax revenue: \$7,261
 - UM federal tax revenue: \$36,499

MU Extension is a unique funding partnership.

Extension funding is a three-way partnership of federal, state and county government. Federal and state money, through the University of Missouri system, pay professional staff salaries, training costs, computers and communication equipment. County funds support the local office, secretarial and youth assistant salaries, staff mileage and council expenses.

The Atchison County Extension Council, faculty and staff would like to express our appreciation to the Atchison County Commissioners for their continued support of extension programs.



Local Support

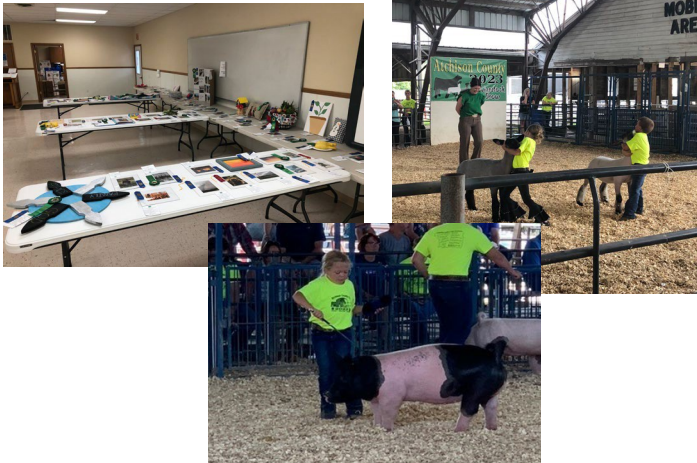
Did you know you can donate directly to Atchison County Extension with a gift to be used immediately or as an endowment contribution for long term efforts. Monies put into the endowment are left forever to earn interest with the county office benefiting each year. You can also direct your donation to a specific program such as 4-H or Master Gardeners.



Missouri 4-H Positive Youth Development

2023 Atchison County Fair

4-H Achievement Day: 13 youth, 79 exhibits, 28 exhibits selected for state fair



Two Rivers 4-H Day Camp

Participants: 16 youth campers ages 5-12, and 2 teen helpers (2 Andrew, 1 Atchison, 1 Holt, 14 Nodaway.)

Theme: Space. "4-H is Out of this World"

Learning objectives:

- Youth learned about the solar system and planets. They made solar system mobiles, and galaxy jars.
- Youth learned about astronauts. They tasted astronaut ice cream, and learned about foods that astronauts eat while in space.
- Youth learned about rockets. They made and launched rockets, using plastic water bottles, straws, vinegar, and baking soda.



Youth Leadership

One of the goals from the Missouri 4-H 2023 Plan of Work was to grow youth leadership in the counties. To accomplish this goal in Atchison County, 4-H staff and volunteers transitioned adult-led 4-H councils to youth-led 4-H councils. This transition should offer youth multiple opportunities for leadership roles

4-H Participation Report

The following numbers were taken from 4-H Online, for the 4-H year October 1, 2022 - September 30, 2023:

Youth members of organized 4-H community clubs: Atchison 33.

Total number of adult volunteers: Atchison 3.

Total number of youth volunteers: Atchison 2.



Atchison County Youth Program Associate, Pam Morriss, held a meet and greet in Atchison County to recruit new members and explore 4-H opportunities.

Bike Rodeo in Tarkio

Atchison County 4-H helped in the bike rodeo in Tarkio.

- Twenty-six kids participated in the annual Bike Rodeo as part of the Tarkio Rodeo festivities.
- New bike helmets were distributed to 20 kids.
- All participants learned hand signals as well as proper riding techniques on the obstacle course
- I conducted a safety inspection and made minor repairs and adjustments to 20 bikes. Things like inflating tires, adjusting seat height, adjusting hand brakes, adjusting and tightening handlebars and checking for proper reflectors were just a few of the items.
- Partners included: Atchison County Health Department, Atchison County Sheriffs office and Tarkio Police Department.





Agriculture & Environment

Graves-Chapple Extension and Education Center Field Day

The 34th annual field day was held on August 22nd. More than 250 people attended Missouri Corn Growers fish fry on Monday night and the Tuesday field day. By providing locally obtained, unbiased information on current issues affecting agricultural production, producers can feel confident that using the information learned at the field day will assist them in their production decisions.

The education provided at field day is designed to allow producers to maintain or increase their profitability if the information provided fits their operation. Maintaining profitability is beneficial not only to them but the entire community.



A group of local producers and MU Extension faculty look on as Phil Graves, son of the center's namesake Donald Graves, and Center Director Jim Crawford cut the ribbon on the new facility at Graves-Chapple during the 2023 field day. In Attendance was Dr. Mun Choi, UM System President.

Graves-Chapple Student Field Day



High-school students learn by hands-on activities. They identified both corn and soybean traits and used a quiz of multiple-choice answers to learn. Before the session ended, Wayne provides the answers to each of the samples and answers any additional questions. More than 170 students attended this event.



Teaching students about Tree Identification to help them assess the trees on their property for agroforestry & silvopasture value.

AG Updates and Private Pesticide Applicator Training

This training educated crop producers for safe handling and application of restricted use pesticides. Participants learned about pest identification, economic thresholds and injury levels, emergency planning procedure and the environmental ramification of improper pesticide application. More than 270 participants initiated or renewed a license, including 23 in Atchison County. Ag staff then followed Private Applicator Training with "hot topics" in fields of ag in Horticulture, Ag Engineering, Agronomy, Livestock and Ag Business. Further regional Private pesticide applicator training was held monthly in Buchanan County reaching an additional 33 producers.

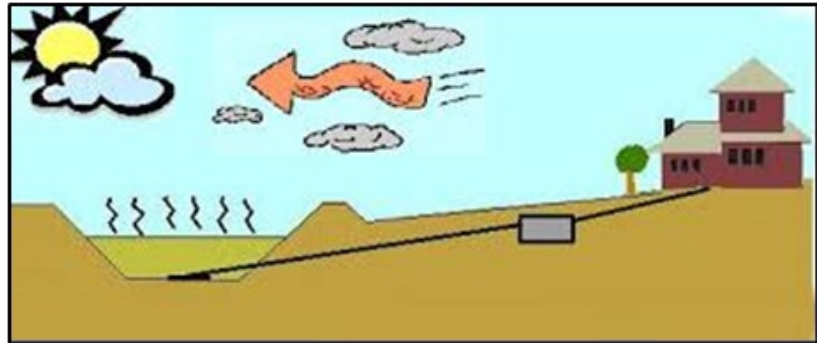




Agriculture & Environment

On Site Septic Systems

- ✓ The most common question this year was septic lagoons going dry from the drought and what should they do. Each is slightly different, but the general recommendation is to add water to maintain its function and to keep the bottom seal from cracking and causing leaks in the future.
- ✓ The average cost to replace a septic system is approx. \$20,000. By taking some simple preventative steps, a current system can be maintained, safely processing wastewater from the home and saving the owner the replacement costs.



A diagram of how an on-site septic system works when incorporating a lagoon in place of a leach field

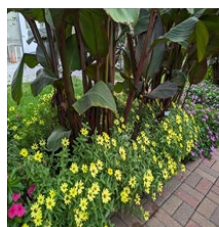
Tar Spot in Corn

Estimated losses to this corn disease between 2018 and 202 are approximately 242.6 US million bushels, which is approximately \$900 million. Yield losses are due to reduced grain fill, kernel abortion and reduced test weight. MU requested field specialists in agronomy monitor Tar Spot spread and severity. It is now in my assigned counties and growers should be prepared for a plan of action next year. More than 65 producer phone calls and conversations were had regarding this new corn disease.



Horticulture Benefits Communities

- Horticulture, the science and art of cultivating fruits, vegetables, flowers, and plants, plays a pivotal role in benefiting communities in multifaceted ways:
- Horticulture contributes to food security by providing communities with a diverse range of fresh and nutritious produce by promoting healthier lifestyles and reducing dependence on external food sources
- Community gardens and shared horticultural spaces foster social cohesion, bringing people together to cultivate a sense of belonging and shared responsibility
- Beyond the social aspect, horticulture enhances:
 - environmental sustainability of communities by promoting green spaces
 - reducing urban heat islands and supporting biodiversity
- Additionally, horticultural activities often provide therapeutic benefits, promoting mental well-being and stress reduction. Overall, horticulture not only addresses practical needs but also enriches the fabric of communities, fostering health, connectivity, and environmental stewardship.



Example of "green mulch"



Example of a well-organized and maintained community garden



Agriculture & Environment

Atchison County Women in Ag event - Tarkio

- Amie Schleicher serves on the program planning committee, which is a partnership of MU Extension, the Atchison County Soil and Water Conservation District, USDA Farm Service Agency (FSA), and USDA Natural Resources Conservation Service (NRCS)
- Program included: Mandy Herron, Flower & Forge Farm, with a presentation on soil blocking; Dr. Tim Crowley—"Life is Not a Dress Rehearsal" keynote presentation; vendors; silent auction; door prizes
- 67 attended from Atchison County and neighboring counties and states; 7 vendor booths
- 100% (n=49) of evaluation respondents would recommend this program to others
- 28 rated every aspect of the program as fully meeting their expectations. On a scale of 1 to 5, participants ranked components of the program as follows:
 - Vendor exhibits and displays: 4.64
 - Silent auction items: 4.68
 - Flower blocking = 4.88
 - Keynote = 4.95
 - Food = 4.81
 - Registration = 4.90
 - Overall success = 4.90



Photos, clockwise from upper left: Dr. Tim Crowley shares his message of positivity and kindness to a large crowd at the Atchison County women in ag program; Amie Schleicher hosted a booth for MU Extension; Mandy Herron, Flower & Forge Farms, demonstrates her seed planting technique; program participants plant flower seeds with guidance from Mandy Herron; local female entrepreneur hosts a booth with her artwork; Dr. Tim Crowley captures the attention of his audience with his powerful stories of living life to the fullest; getting participants out of their comfort zones, and getting to know each other (even strangers!), were just some of the interactive components of Dr. Tim Crowley's keynote address

Comments from participants about the 2023 Atchison County Women in Ag program:

"This was a fantastic evening. I'm gonna plant seeds and seeds of kindness."

"To bring more joy to others -- get out of comfort zone."

"Loved it! Will be kinder to others and forgive others and myself."



Business & Community

Digital Ambassador Program

The inaugural Digital Ambassador program was offered in Nodaway County and trained seven volunteers to assist others in making decisions about broadband internet services, as well as help them set up and maintain home networks and feel confident using the internet. Volunteers will serve the Northwest Region.

The program also provided an opportunity to bring Kathy Kiely, Professor and Lee Hills Chair in Free Press Studies at the MU School of Journalism to the region. Professor Kiely shared tools to help navigate the digital information landscape and differentiate between reliable information and misinformation.



NWMO VITA Tax Preparation

The 2023 NWMO VITA Tax preparation program offered free tax prep to people needing assistance filing their 2022 tax returns. The NWMO VITA program allowed low income, disabled, and older clients to get their returns prepared for free when they didn't feel comfortable using free online resources themselves. They did not have to pay a preparer upfront for the service which may have prevented many of them from getting their taxes prepared. The program provided education on their return and each client was shown where the money was coming from, whether it was a refund of taxes overpaid, or an Earned Income Credit. If a client owed taxes, we helped them understand why they owed additional taxes and advised them to talk to their employer about having additional funds withheld from their paycheck to avoid penalties for underpayment.

Eight volunteers from communities across the region partnered to offer 24 free 2022 income tax preparation sites in 12 different counties in the region. Volunteers spent 377 hours preparing 263 tax returns in Northwest Missouri. Cost savings to taxpayers (\$200 per tax return) is \$52,600. Total federal refunds in northwest Missouri was \$126,116, with \$56,980 being returned from the state. In Atchison County, 19 people took advantage of this service.



**Free Personal Income
Tax Preparation**

MU Extension is offering FREE tax return assistance for the 2022 tax year through IRS's Volunteer Income Tax Assistance (VITA) program in northwest Missouri.



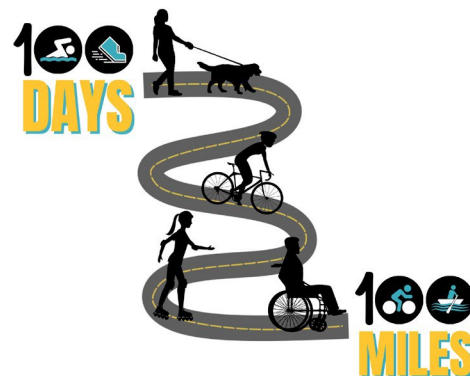


Health & Human Sciences

100 Days 100 Miles

This year's 100 Miles, 100 Days Extension initiative made a significant impact statewide, attracting over 1,300 participants in Missouri, including 23 from Atchison County and more than 240 in our Northwest Region. Throughout the 100 days of summer, participants were urged to discover their own enjoyable ways to cover the equivalent of 100 miles. The diverse activities reported ranged from hikes and bike rides to navigating wheelchairs through MO State Parks. Individuals embraced the initiative by strolling through their neighborhoods, fostering active connections with friends and family, and making the most of local parks and pools.

Our weekly motivational emails provided valuable education and fueled a friendly county competition, adding a bit of excitement into the challenge. Whether participants reached the coveted 100 miles or not, the ultimate goal of our initiative was to instill a lasting enjoyment of movement through a blend of encouragement, accountability, and motivation. Our hope is that the impact of this program will extend far beyond the 100 days, inspiring a continued commitment to a healthy and active lifestyle.



Boost Your Brain and Memory



It is estimated that more than 6 million Americans are suffering from dementia related illnesses in the United States. The Alzheimer's Association mentions 120,000 of those individuals are citizens of Missouri with 223,000 family caregivers. This disease is costing the Missouri Medicaid program \$973 million. By teaching Boost Your Brain and Memory and partnering with the Alzheimer's Association, the goal is to help increase the brain health of Missourians and offer support for caregivers of individuals with dementia.

Research has found that while 30% of your risk of dementia is genetics, 70% is non-genetic factors. This is good news because it means we have some control over our chance of developing dementia. You can boost your brain health by focusing on healthy habits in six areas: intellectual activity, nutrition, physical activity, social engagement, spiritual activity, and stress management. Boost Your Brain and Memory focuses on these six areas and teaches how to incorporate healthy habits to improve your memory and brain health.

Multiple Boost Your Brain and Memory were taught across northwest Missouri this year. In person classes were offered at the Northwest Technical School in Maryville in the Spring and Fall, the Clinton County Youth Building, the Dekalb County Extension Office, and the Rock Port Senior Center. Due to unforeseen circumstances the Dekalb County class had to be cancelled part way through but there are plans to reschedule for 2024.

Between all locations 38 participants were reached. Participants had amazing things to say about the program and had amazing learning outcomes from the class. One participant mentioned that in a time in life when they don't have to do anything if they don't want (retirement), it is more important than ever to keep busy doing things and this class is a great reminder to keep moving. Another quote from the class is that by taking this class the individual was given so much hope to know that they have some control over their risks.

The information from the Boost Your Brain class affected 71% of participants to be motivated to live a healthy life. Over 60% of participants made changes to their lifestyle based on what they learned in class and plan to continue the changes they have made. When asked if there are plans to make even more lifestyle changes in the coming months, 58% agreed they plan to change. Overall, the classes and information was well received and there was an interest in having the session again with 74% of participants saying they would recommend the class to a close friend and that they would be interested in attending a refresher or booster session.



Health & Human Sciences

Preventing Falls to Improve Quality of Life and Support Independent Living

There is a clear need for fall prevention programming in Missouri. While one in four adults aged 65 years and older report falling every year in the United States, the fall rate for older adults in Missouri is even higher. In 2020, 31.3% of older Missourians experienced a fall. Falls cause the most injury-related deaths among older adults. The economic cost of older adult falls in the U.S. is \$50 billion a year.

Nutrition and Health Specialists help Missourians prevent falls by teaching **Stay Strong, Stay Healthy (SSSH)**; **Tai Chi for Arthritis and Fall Prevention (TCAFP)** and **A Matter of Balance (MOB)**. **Stay Strong, Stay Healthy** is a strength-training program that focuses on strength, flexibility and balance for older adults. The **Tai Chi for Arthritis and Fall Prevention** program can help participants reduce pain and improve mobility and balance. A **Matter of Balance** is designed to reduce the fear of falling, help older adults increase their physical activity and introduce exercises to increase strength and balance.

In 2023, **SSSH Levels 2 and 3** were completed at the Maryville Community Center with the same 8 participants in both classes. This group was one of the first in the state to pilot the new Level 3 set of exercises. **SSSH Level 1** was taught to a new audience at the Rock Port United Methodist Church as a free SNAP class. There were two, 8-week sessions of the class with 8 participants in both sessions and 7 participants who participated in one of the sessions. **SSSH Level 1** was also taught as a free SNAP class to 6 participants at the Oregon United Methodist Church. **TCAFP** was taught at the Rock Port United Methodist Church to 16 participants. **MOB**, which is a free program, was taught to 16 participants at the Holt County Senior Center and to 9 participants at the Tri-City Friendship Center in Maitland.

Fall prevention programs are proven to decrease participants' fall risks. Data from statewide **SSSH** programs from 2021 and 2022 show that **100% of participants feel that their overall health was improved after the program**. Additionally, 98% of participants reported feeling physically stronger, 85% reported sleeping better and 82% reported that their joints feel better.



Participants perform the Leg Extension exercise with ankle weights during a SSSH Level 1 class in Holt County. Participants work up to doing two sets of 10 repetitions of each of the eight SSSH exercises. They increase the amount of weight they lift with their arms and legs to continue to make the exercises challenging.



Katie Pemberton talks to A Matter of Balance participants in Mound City.

Tai Chi participant feedback

One participant learned at a doctor's appointment that her blood pressure was lower and her kidney function was better. Another participant said she could balance better while she was getting dressed.

"I feel stronger and have more energy. More stamina."



Health & Human Sciences

SNAP-Education

The Supplemental Nutrition Assistance Program Education (SNAP-Education or SNAP-Ed) brought \$10,874,798 in federal funds to Missouri. During FY2023, Missouri's SNAP-Ed program reached over 78,000 Missourians through direct classroom education. Each person participated in an average of 6 hours of education totaling over 15,000 hours. In addition, an additional 760,135 persons participated in indirect education. Direct and indirect education resulted in over 1.8 million total contacts with Missourians.

A total of 595 participants were from Atchison County.

Participants in SNAP-Ed learn the importance of making healthier meals and snack choices, eating breakfast more often, are more willing to try new foods, increase their physical activity, and make healthier food choices. Those who practice healthy eating and are physically active are more likely to contribute to a healthy labor force and enjoy a high quality of life throughout the lifespan.

This vital programming effort also reduces healthcare costs over the participant's lifetime, saving taxpayer money in reduced public healthcare benefits and insurance premiums.



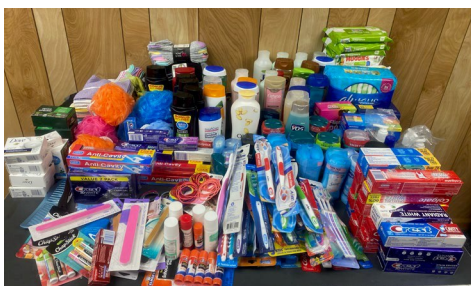
Gina Ripley sharing SNAP-Ed resources at the Health Fair held at the Rock Port United Methodist Church

Participating schools and agencies include:

- ✓ Fairfax Elementary
- ✓ Rock Port Elementary
- ✓ Tarkio Elementary

Success Story

A third-grade girl made "Fruity Water" at home after our lesson. She told the class that she added fresh strawberries and orange slices to a pitcher of water in the refrigerator overnight and she thought it tasted better than flavored water from the grocery store.



The Atchison County Extension Council and 4-H partnered to participate in the MU Extension Day of Service project in October. Supplies were collected for Atchison County Schools to distribute to individuals who may have a need for personal care items.



County Highlights

Atchison County Leaders Honor Roll Recipient – W.C. Farmer



MU Extension Field Specialist, Jim Crawford, presents the Leaders Honor Roll award to W.C. Farmer.

W.C. Farmer of Rock Port has been selected for the University of Missouri Atchison County Extension Leaders Honor Roll.

The Leaders Honor Roll recognizes outstanding leaders and volunteers who have supported and helped to advance MU Extension in their communities. W.C. was recognized as the 2022 Leaders Honor Roll recipient at the Atchison County Extension Council annual dinner and meeting on Feb. 7.

W.C. has been a real asset in helping Extension in Atchison County with their mission of bringing knowledge to the public. Whether it's a news release on a time-sensitive topic that affects area residents, notice of an upcoming educational workshop or just a general information piece, W.C. sees that all are published. He comes to MU Extension events in the county taking wonderful pictures that he is willing to share and publishes articles providing the benefits attendees received by attending the event.

When it is time for the county fair, W.C. spends most of two days at the fairgrounds taking pictures of the livestock award winners and then again on Friday night photographing all the premium exhibitors with their animals. The results of the livestock show and other exhibits are also published, allowing everyone in the county an opportunity to see the results of the hard work youth put into their projects.

Whether it's programming for area youth or adult educational opportunities, W.C. Farmer is an advocate for the work of MU Extension in Atchison County.

Selection for the Honor Roll is based on community leadership efforts that support MU Extension's efforts to enhance economic viability, build strong individuals, families and communities, and create and sustain healthy environments. Each fall, county engagement specialists work with county faculty and staff to identify one or two outstanding leaders, or couples, to represent their county.



County Highlights

Century Farm

Five Atchison County farms have been recognized as a Missouri Century Farm in 2023. The Bressler Family of Bressler Farms in Rock Port Mo. Anna Whelan Wakefield Farm in Watson Mo, The Whelan and Harris Family Farm in Watson Mo. Timothy R, Anna Wakefield Whelan, Teresa Harris Wakefield Whelan Family Farm also in Watson. Miles Smith, Chair of the University of Missouri Atchison County Extension Council, and Devon Sons, Vice Chair of the University of Missouri Atchison County Extension Council, presented them with their certificates during the Atchison County Fair.

Additional farms inducted into the Missouri Century Farm Club this year included Stephanie and Jay Smith of Fairfax Mo.

In 1976, Missouri's Centennial Farm project awarded certificates to persons owning farms that had been in the same family for 100 years or more. The MU College of Agriculture, Food and Natural Resources and MU Extension planned a 10-year update in 1986 called the Century Farm program. Since then, the program has been an annual event, recognizing more than 100 farms each year. In 2008, the Missouri Farm Bureau became a program co-sponsor.

"Missouri Farm Bureau is a proud partner in the recognition of century farms," said Blake Hurst, president of Missouri Farm Bureau. "We applaud the hard-working farm families that have kept us fed and clothed for generations. They represent an important part of our heritage and laid a foundation for the bounty Americans enjoy every day."

To qualify, farms must meet the following criteria:

- The same family must have owned the farm for 100 consecutive years.
- The line of ownership from the original settler or buyer may be through children, grandchildren, siblings, and nephews or nieces, including through marriage or adoption.
- The farm must be at least 40 acres of the original land acquisition and make a financial contribution to the overall farm income.

Since 1976, the program has recognized more than 8,000 Missouri Century Farms.

For more information, visit the program's webpage at <https://extension2.missouri.edu/programs/century-farms>.





County Highlights

Atchison County State Fair Farm Family – Garrett & Jayme Wood Family



Garrett and Jayme Wood and family of Tarkio were among the families honored during the 66th annual Missouri Farm Family Day, Aug. 14 at the Missouri State Fair.

The Wood family was selected as the Atchison County Missouri Farm Family by University of Missouri Extension in Atchison County and the local Farm Bureau. The family includes Braylyn, Harper, Jaylee and Grayson.

Each year, the fair sets aside a day to recognize farm families from across the state that are active in their communities, involved in agriculture, and/or participate in local outreach and extension programs such as 4-H or FFA.

The Wood family operates a 3500-acre farm raising Black angus bulls. The Woods girls are involved in 4-H showing swine

The annual event is sponsored by five partner agencies: the Missouri Farm Bureau; the Missouri Department of Agriculture; the Missouri State Fair Commissioners; the MU College of Agriculture, Food and Natural Resources; and MU Extension.

The event showcases the impact that Missouri farm families have on the economy and heritage of the state, said Missouri State Fair Director Mark Wolfe. "These families are involved in agriculture activities in their communities and are active participants in local outreach and extension. As the premier showcase for Missouri agriculture, the Missouri State Fair is most certainly the appropriate place to celebrate these families."

