



# STORM SHELTER & SAFE ROOM PACKET

***Information compiled by:***

Bob Schultheis, Natural Resource Engineering Specialist  
Webster County Extension Center  
800 S. Marshall St., Marshfield, MO 65706  
Phone: 417-859-2044  
E-mail: [schultheisr@missouri.edu](mailto:schultheisr@missouri.edu)  
Web: [extension.missouri.edu/webster](http://extension.missouri.edu/webster)

**This packet includes:**  
**Online Resources**  
**Information Article**  
**Partial list of Storm Shelter and Safe Room Manufacturers**  
**In-Ground Storm Cellar Plan**

Last revised: 2011-09-16

---

## ONLINE RESOURCES

### **National Oceanic and Atmospheric Administration (NOAA)**

Online Tornado FAQs: [www.spc.noaa.gov/faq/tornado/](http://www.spc.noaa.gov/faq/tornado/)

Storm Prediction Center: [www.outlook.noaa.gov/tornadoes/](http://www.outlook.noaa.gov/tornadoes/)

Tornado Safety Guide: [www.nssl.noaa.gov/edu/safety/tornadoGuide.html](http://www.nssl.noaa.gov/edu/safety/tornadoGuide.html)

### **Texas Tech University's Wind Science and Engineering Research Center**

[www.depts.ttu.edu/weweb/Shelters/Shelters.php](http://www.depts.ttu.edu/weweb/Shelters/Shelters.php)

### **Selection considerations for storm shelters and safe rooms**

[www.tornadoproject.com/safety/shelters.htm](http://www.tornadoproject.com/safety/shelters.htm) and

[www.tornadoproject.com/safety/moreonshelters.htm#top](http://www.tornadoproject.com/safety/moreonshelters.htm#top)

**FEMA Safe Room Resources:** [www.fema.gov/plan/prevent/saferoom/sr\\_resources.shtm](http://www.fema.gov/plan/prevent/saferoom/sr_resources.shtm)

**FEMA 320 Taking Shelter From the Storm: Building a Safe Room For Your Home or Small Business** [www.fema.gov/plan/prevent/saferoom/fema320.shtm](http://www.fema.gov/plan/prevent/saferoom/fema320.shtm)

### **FEMA Public and Community Shelters and Safe Rooms**

[www.fema.gov/plan/prevent/saferoom/public.shtm](http://www.fema.gov/plan/prevent/saferoom/public.shtm)

**FEMA How-To Series (with diagrams):** [www.fema.gov/plan/prevent/howto/index.shtm](http://www.fema.gov/plan/prevent/howto/index.shtm)

**National Storm Shelter Association:** [www.nssa.cc/Home.php](http://www.nssa.cc/Home.php)

## **Tornadoes Prompt Interest in Storm Shelters and 'Safe Rooms'**

The devastating tornadoes that hit southwest Missouri in 2003, 2006, 2008 and 2011 have caused many Missourians to take a closer look at their vulnerability to nature's wrath and to make better preparations for surviving future storms, said Bob Schultheis.

The natural resource engineering specialist with University of Missouri Extension said having a shelter or a 'safe room', built into or near the home can help protect families from injury or death caused by the dangerous forces of extreme winds.

"All of Missouri is in Wind Zone IV, meaning wind gusts from severe storms can exceed 250 miles per-hour. The number of recorded tornadoes is 5-15 per 2,470 square miles for much of the state, Schultheis said. "Combining these factors places the entire state at a high risk level that warrants a shelter as the preferred method of protection."

The shelter or safe room should be free of clutter and readily accessible from all parts of the house. It must be located in a flood-free area, well-anchored to resist overturning and uplift, and the walls, roof and door made strong enough to resist penetration by wind-borne missiles.

"Common house construction techniques based on "minimum" building codes generally don't provide adequate protection. Most Missouri counties do not have even these minimum building codes."

To help homeowners and builders design and build shelters that do withstand extreme wind speeds, the Federal Emergency Management Agency has a 46-page booklet entitled FEMA 320 "Taking Shelter from the Storm: Building a Safe Room For Your Home or Small Business," which includes 18 pages of construction plans and cost estimates. A free copy can be obtained by calling FEMA toll-free at 1-888-565-3896 or visit their Web site at [www.fema.gov/plan/prevent/saferoom/fema320.shtm](http://www.fema.gov/plan/prevent/saferoom/fema320.shtm)

Also, "Storm Cellar" (USDA Plan #6209) is a one-page construction blueprint for building two sizes of in-ground concrete storm cellars (8 ft. x 16 ft. and 5 ft. x 10 ft.). The plan is available for \$3 plus shipping and handling through the University of Missouri's Agricultural Engineering Department by calling toll-free 1-800-995-8503. A smaller working drawing is available online at [www.ag.ndsu.edu/aben-plans/6209.pdf](http://www.ag.ndsu.edu/aben-plans/6209.pdf).

"Whether you build a shelter or not, two important steps you can take to protect your family are to prepare an emergency plan for dealing with disaster situations and put together an emergency supply kit for home, business and each vehicle," said Schultheis.

More information on emergency preparedness and disaster recovery is available online at [extension.missouri.edu/main/DisplayCategory.aspx?C=10](http://extension.missouri.edu/main/DisplayCategory.aspx?C=10).

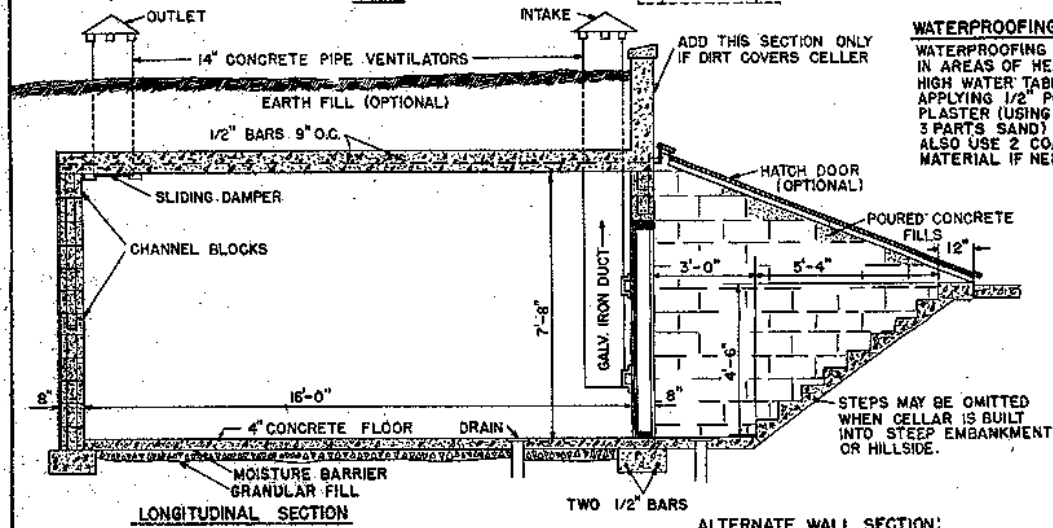
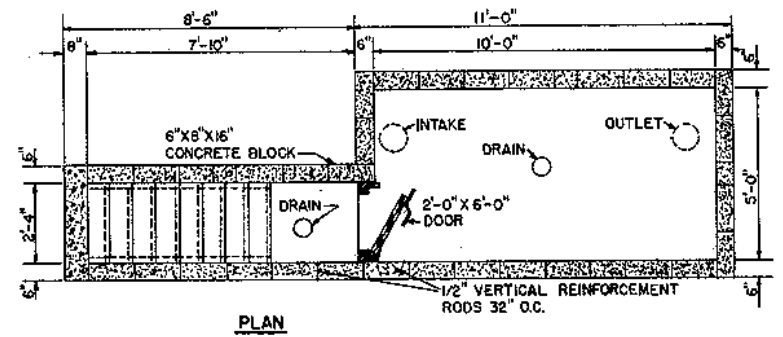
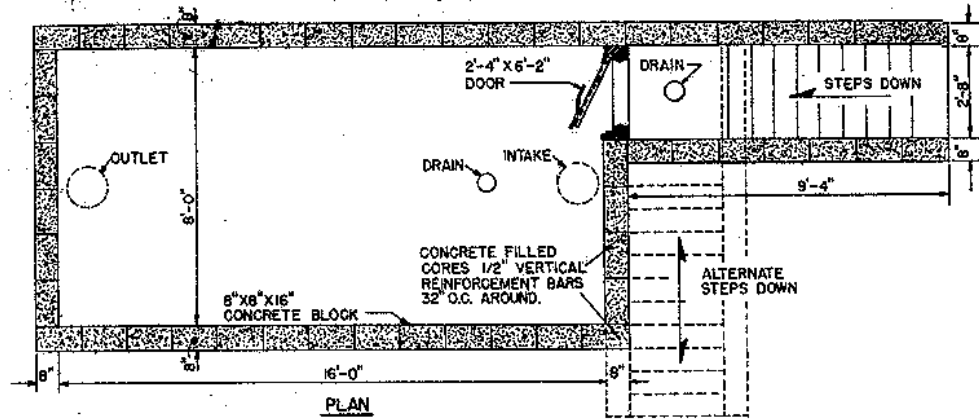
###

# PARTIAL LIST OF STORM SHELTER & SAFE ROOM MANUFACTURERS SERVING MISSOURI

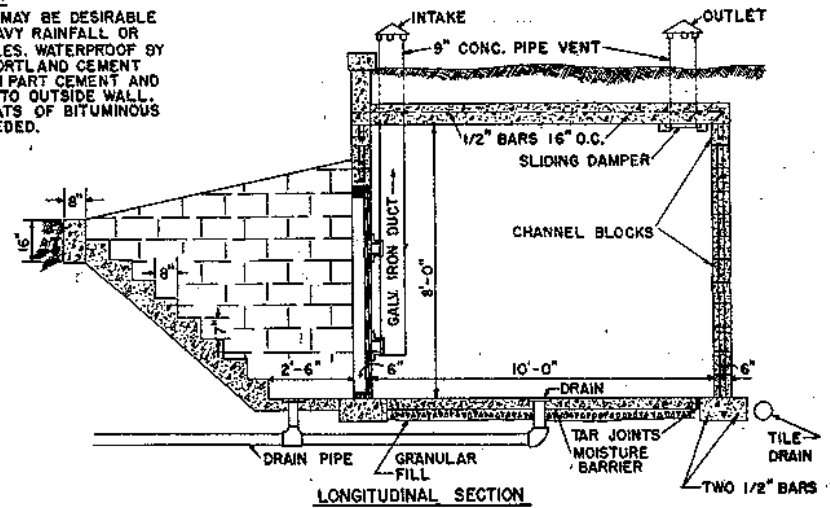
For informational purposes only; no endorsement is implied by their mention.

<p><b>Missouri</b> FamilySAFE 3230C S. National, Springfield, MO 65807 Phone: 417-693-7504 or 417-887-7469 E-mail: <a href="mailto:rrayl@varsityfs.com">rrayl@varsityfs.com</a> or <a href="mailto:jwherley@varsityfs.com">jwherley@varsityfs.com</a> Web: <a href="http://www.familysafemo.com">www.familysafemo.com</a></p> <p>Life Shelter 166 Stevens Dr., Marshfield, MO 65706 Phone: 417-859-5911 or 417-425-5350 E-mail: <a href="mailto:norm@lifeshelter.biz">norm@lifeshelter.biz</a> Web: <a href="http://www.lifeshelter.biz">www.lifeshelter.biz</a></p> <p>Missouri Storm Shelters, Inc. 1839 N. Commerce Dr., Nixa, MO 65714 Phone: 417-725-0055 Web: <a href="http://www.missouristormshelters.com">www.missouristormshelters.com</a></p> <p>Northwest Missouri Shelters Savannah, MO 64485 Phone: 816-432-4358 E-mail: <a href="mailto:info@nwmissourishelters.us">info@nwmissourishelters.us</a> Web: <a href="http://www.nwmissourishelters.us/">www.nwmissourishelters.us/</a></p> <p>Ozark Wilbert Concrete Products 1451 N Farmer Branch Rd, Ozark, MO 65721 Phone: 888-262-7383 or 417-581-3060 Web: <a href="http://www.siprecast.com">www.siprecast.com</a></p> <p>Ozark Wilbert Vault Co. 2850 E Barton St., Springfield, MO 65804 Phone: 417-883-2355 Web: <a href="http://www.siprecast.com">www.siprecast.com</a></p> <p>Ozark Wilbert Vault Co. 310 Spruce St., Cabool, MO 65689 Phone: 417-962-3126 Web: <a href="http://www.siprecast.com">www.siprecast.com</a></p> <p>Calus Precast Concrete 211 East 20th St., Mountain Grove, MO 65711 Phone: 417-926-6000</p> <p>Reliable Storm Shelters Carthage, MO 64836 Phone: 417-850-5562 or 417-861-7178 Web: <a href="http://www.reliablestormshelters.com">www.reliablestormshelters.com</a></p> <p>Ron Norris 7911 C.R. 5090, West Plains, MO 65775 Phone: 417-274-8774 Email: <a href="mailto:rnorris@centurylink.net">rnorris@centurylink.net</a> Builds poured-in-place concrete safe rooms within 100-mile radius of West Plains</p> <p>The Concrete Works, LLC One Concrete Way, HCR 72 Box 374 Souder, MO 65773 Phone: 417-265-3504 E-mail: <a href="mailto:info@theconcreteworks.com">info@theconcreteworks.com</a> Web: <a href="http://www.theconcreteworks.com">www.theconcreteworks.com</a></p> <p>Tornado Guard™ 21205 N Ponderosa Rd, Clark, MO 65243 Phone: 866-303-8575 or 573-687-3253 Fax: 573-687-3255 Email: <a href="mailto:info@tornadoguard.com">info@tornadoguard.com</a> Web: <a href="http://tornadoguard.com">tornadoguard.com</a></p>	<p>TwisterSafe™, LLC 7661 Hwy. P, Neosho, MO 64850 Phone: 888-782-1039 or 417-782-1039 E-mail: <a href="mailto:sales@twistersafe.com">sales@twistersafe.com</a> Web: <a href="http://www.twistersafe.com">www.twistersafe.com</a></p> <p><b>Kansas</b> Canton Enterprises 701 West Railroad, P.O. Box 135 Canton, KS 67428 Phone: 888-323-3123 E-mail: <a href="mailto:info@stormshelters.biz">info@stormshelters.biz</a> Web: <a href="http://www.stormshelters.biz/">www.stormshelters.biz/</a></p> <p>Mauzey Construction 4393 252nd Road, Arkansas City, KS 67005 Phone: 620-442-8698 E-mail: <a href="mailto:info@mauzeyconstruction.com">info@mauzeyconstruction.com</a> Web: <a href="http://www.mauzeyconstruction.com">www.mauzeyconstruction.com</a></p> <p><b>Arkansas</b> Arkansas Storm Shelters 605 A Reasoner Lane Russellville, AR 72801 Phone: 877-766-8873 or 501-766-8873 E-mail: <a href="mailto:info@arkansasstormshelters.us">info@arkansasstormshelters.us</a> Web: <a href="http://www.arkansasstormshelters.us/">www.arkansasstormshelters.us/</a></p> <p>Cozy Caverns™ Storm Shelters P.O. Box 1590 Cabot, AR. 72023 Phone: 501-920-7460 E-mail: <a href="mailto:jhg@cozycaverns.com">jhg@cozycaverns.com</a> Web: <a href="http://www.cozycaverns.com">www.cozycaverns.com</a></p> <p>DuPont™ StormRoom™ Distributed by: StormSolutions 207 Caddie St. Berryville, AR 72616 Phone: 888-578-6769 E-mail: <a href="mailto:info@stormsolutions.us">info@stormsolutions.us</a> Web: <a href="http://www.stormsolutions.us">www.stormsolutions.us</a></p> <p>Ground Zero Storm Shelters 4600 Independence Perry, OK 73077 Phone: 877-880-1351 or 405-627-2245 E-mail: <a href="mailto:richard@groundzeroshelter.com">richard@groundzeroshelter.com</a> Web: <a href="http://www.groundzeroshelters.com">www.groundzeroshelters.com</a></p> <p>NEA Shelters 3132 CC Rd Pocahontas, AR 72455 Phone: 870-892-0257 or 870-926-3002 Web: <a href="http://neastormshelters.com">neastormshelters.com</a></p> <p><b>Oklahoma</b> Hausner's Inc. 505 North Griffith, P.O. Box 32 Drumright, OK 74030 Phone: 800-533-9509 or 918-352-3479 E-mail: <a href="mailto:hausnersprecast@earthlink.net">hausnersprecast@earthlink.net</a> Web : <a href="http://www.hausners.com">www.hausners.com</a></p> <p>New Day Tornado Shelters 9265 Mockingbird, Talala, OK 74080 Phone: 918-277-3758 Fax: 918-275-4897 E-mail: <a href="mailto:dirkderose@aol.com">dirkderose@aol.com</a> Web: <a href="http://www.newdaytornadoshelters.com">www.newdaytornadoshelters.com</a></p>	<p>Storm Safe Rooms 13614 N Old Highway 169 Collinsville, OK 74021 Phone : 800-324-9322 or 918-519-0576 E-mail: <a href="mailto:info@stormsaferoom.com">info@stormsaferoom.com</a> Web: <a href="http://www.stormsaferoom.com">www.stormsaferoom.com</a></p> <p><b>Illinois</b> Lifesaver Storm Shelters 450 East Illinois Ave., Benton, IL 62812 Phone: 618-435-3833 E-mail: <a href="mailto:info@sheltersonline.com">info@sheltersonline.com</a> Web: <a href="http://www.sheltersonline.com/dealer/Missouri.html">www.sheltersonline.com/dealer/Missouri.html</a></p> <p>SafeSheds, Inc. 7029 Parrill Rd, Alma, IL 62807 Phone: 888-556-1531 Web: <a href="http://www.safesheds.com">www.safesheds.com</a></p> <p><b>Texas</b> Fiberglass Creations Inc. PO Box 2042, 1601 Hamlett Henderson, TX 75653 Phone: 877-957-6616 or 903-657-6616 Email: <a href="mailto:fiberglasscreate@tyler.net">fiberglasscreate@tyler.net</a> Web: <a href="http://www.fiberglasscreations.com">www.fiberglasscreations.com</a></p> <p>Jarrell Storm Shelters 911 N 1st St., Jarrell, TX 76537 Phone: 866-817-0293 or 512-746-4272 E-mail: <a href="mailto:shelters@jarrellstormshelters.com">shelters@jarrellstormshelters.com</a> Web: <a href="http://jarrellstormshelters.com">jarrellstormshelters.com</a></p> <p>U.S. Storm Shelters 443 PR 4215, Decatur, TX 76234 Phone: 800-868-5799 or 800-379-9712 E-mail: <a href="mailto:info@usstormshelters.com">info@usstormshelters.com</a> Web: <a href="http://www.usstormshelters.com">www.usstormshelters.com</a></p> <p><b>Tennessee</b> RemagenSafeRooms P.O. Box 585, Monteagle, TN 37356 Phone: 888-397-7142 E-mail: <a href="mailto:info@remagensaferooms.com">info@remagensaferooms.com</a> Web: <a href="http://www.remagensaferooms.com/">www.remagensaferooms.com/</a></p> <p>StormX Shelters, LLC 4496 Highway 78, Dyersburg, TN 38024 Phone: 877-903-7233 or 731-589-1955 E-mail: <a href="mailto:stormxshelters@aol.com">stormxshelters@aol.com</a> Web: <a href="http://www.stormxshelters.com">www.stormxshelters.com</a></p> <p>TornadoSafeRoom™ Distributed by: Floyd Arnold P.O. Box 10238, Murfreesboro, TN 37129 Phone: 1-877-723-7666 E-mail: <a href="mailto:floydarnold@comcast.net">floydarnold@comcast.net</a> Web: <a href="http://www.tornadosaferoom.com/">www.tornadosaferoom.com/</a></p>
--	--	---

There may be other local companies making concrete storm shelters as well. They are usually listed online or in the Yellow Pages as the same companies that sell septic tanks.

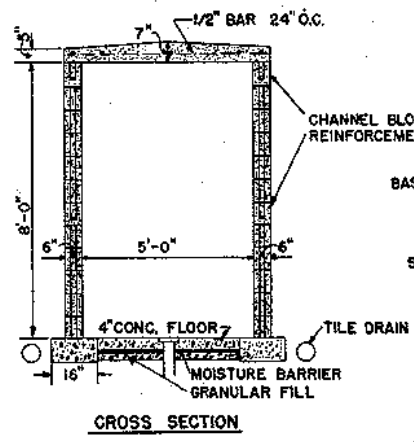
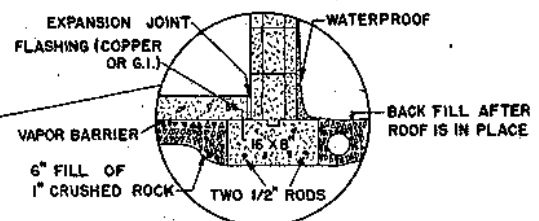
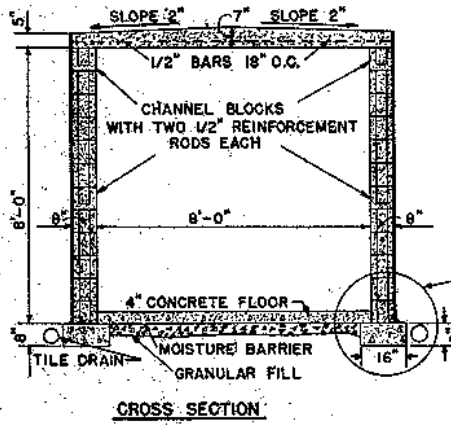


**WATERPROOFING:**  
 WATERPROOFING MAY BE DESIRABLE IN AREAS OF HEAVY RAINFALL OR HIGH WATER TABLES. WATERPROOF BY APPLYING 1/2" PORTLAND CEMENT PLASTER (USING 1 PART CEMENT AND 3 PARTS SAND) TO OUTSIDE WALL. ALSO USE 2 COATS OF BITUMINOUS MATERIAL IF NEEDED.



**ALTERNATE WALL SECTION:**  
 A 6" POURED CONCRETE WALL MAY BE USED. THE STEEL REINFORCING MUST BE 1/2" REINFORCING RODS 12" ON CENTER EACH WAY.

**NOTE:**  
 FLOOR DRAINS MAY BE USED IF THERE IS A LOWER AREA NEARBY TO WHICH WATER MAY BE DRAINED. IF A SUMP IS USED, EQUIP IT WITH AN AUTOMATIC PUMP.



BASED ON: AUBURN UNIV. PLAN NO. U-113 & U-114  
 SCALE: 3/8" = 1'-0" UNLESS OTHERWISE NOTED.

COOPERATIVE EXTENSION WORK IN AGRICULTURE AND HOME ECONOMICS		
AND UNITED STATES DEPARTMENT OF AGRICULTURE COOPERATING		
<b>STORM CELLAR</b>		
ALA.	'75 6209	SHEET 1 OF 1

CONSULT LOCAL HEALTH AND BUILDING CODE AUTHORITIES BEFORE STARTING CONSTRUCTION