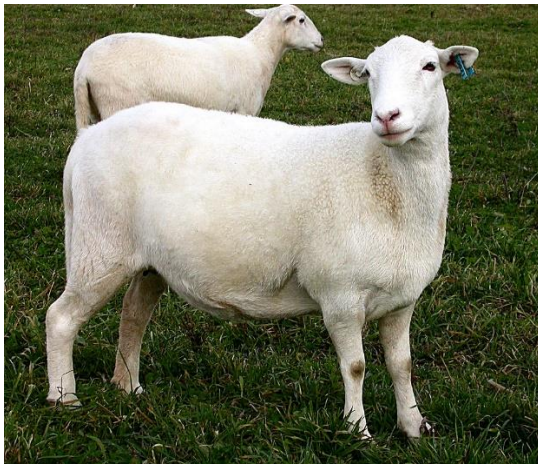


# Sheep & Goat Producers Program

Are sheep and goats part of your farming operation? Do you want them to be? Come learn the latest on producing these special livestock in south central Missouri. This evening program will include sessions on health management, reproduction, and successful marketing. It will also be a great opportunity to meet and network with specialists and other sheep and goat producers in the area.



**Basic Sheep and Goat Health and Monitoring.** Dr. Christopher Baughman, Lincoln University, State Extension Specialist

**Reproductive Management.** Elizabeth Picking, MU Extension Field Specialist in Livestock

**Small Ruminant Markets.** Jennifer Lutes, MU Extension County Engagement Specialist in Agriculture and Environment, McDonald County

**Where:** Family Life Center, First Baptist Church, Cabool

**When:** October 17th, 6:00 to 8:30

**Cost:** \$20/ person or \$30/ couple (light meal included)

**Sign-up:** To register or for more details contact Texas County Extension, 417-967-4545

