

## RECREATIONAL LEASES - ARE THEY RIGHT FOR YOU?

*by Randa Doty, Ag Business Specialist*

Fall is approaching, the leaves will start turning soon, wildlife will start gathering food for the winter, and hunters will be getting buck fever. Many hunting enthusiasts are not landowners. Land is expensive so people interested in hunting may not be able to afford to purchase land for hunting, so they must find land to hunt on. Some landowners may not be interested in hunting, but may be interested in managing the wildlife population on their land. This creates an opportunity for hunters and landowners to work together.

Hunting leases are becoming more popular all the time. Landowners have seen the demand for hunting land increase and some hunters are willing to pay for the right to hunt land exclusively. Leasing offers benefits to both parties. It will provide additional income for landowners and a better recreational experience to the hunter. Leasing out the recreational rights of land many not be for every landowner. There are pros and cons to recreational leases that should be considered.

Landowners should consider several things before they lease. There should be enough land and populations of wild game available to facilitate leasing the land out. Liability is probably the one factor that some may not think about and may shy others away from leasing.

When leasing land for hunting, landowner liability is increased. The landowner may be responsible for personal injury if negligence is proven. It would be a good practice to inform all lessees of potential hazards and to have them sign a liability release along with the lease. Added protection could come in the form of liability insurance and/or requiring the lessees to obtain liability insurance.

There are several types of leases that should be considered in a recreational lease. An annual lease is the most common in Missouri. The annual lease gives the hunter the exclusive right to the wildlife, in season, on the

property for the entire year. This is very popular with both the leaser and lessee because the hunters are able to manage and monitor the wildlife throughout the year.

When the landowner and sportsman come to an agreement to lease the land for recreation there are several things that should be included in the written lease. The items that should be included are:

- Description of the recreational rights, services and facilities being leased
- Names of lessors and lessees involved
- Description of the property being leased, including legal description and map
- Species to be hunted
- Terms of payment
- Duration of Lease
- Definition of who has recreational rights
- Any special rules and regulations concerning restrictions or responsibilities of either party
- Signatures of all parties involved



It is suggested that a written lease agreement be reviewed by legal counsel. MU Extension has a few samples of hunting lease agreements available.

If leasing out recreational rights on your land is something you are interested in, there are great opportunities for added revenue. After consideration of the suitability of the property for the type of recreation that it would be leased for and if the landowner is willing to accept the additional liability risk, then a recreational lease for the property could be considered. The lessor/lessee relationship should be a good one with open communication and it is important for both parties to feel like they are getting what they want out of the agreement. This includes the level of management, type of lease, and the recreational experience. For more information on hunting leases visit your local extension office and ask for MU Guide G9420: Landowners' Guide to Lease Hunting in Missouri.

## WIND AND HAIL DAMAGE MISSOURI CROPS

by Wayne Flanary, Agronomy Specialist

The injury from wind and hail damage hit many parts of northwest Missouri. Wind damage occurred about a month ago that affected northern Atchison, parts of Nodaway and Gentry counties. "Then we had two days of storms that combined straight wind and hail causing some of the worse crop injury that I have seen in my career in the Maryville area," explained Wayne Flanary, Agronomist with University of Missouri Extension

Hail damage around the area varies in intensity. Crops around Maryville and Nodaway County were heavily damaged along with reports of damage in other counties. The worse hail damage looks as if the corn crop was harvested as the field is brown. Corn stalks are cut and lying on ground along with ears. Soybean stems were also cut and lodged. This damage will be a complete loss.

Lighter damaged corn fields have shredded leaves, bruising and lodged corn. Most corn fields were in the dent stage. The starch is hardening causing a milk line. This line moves from the top of the kernel toward the cob. Kernels at this stage will not abort. Kernels may be lighter as the kernel continues to dry down. This is good news where corn fields have standing stalks with ears that can be harvested.

The wind damage from straight line winds broke and bent corn stalks over. In places, it's the whole

field whereas others, there are areas within the field. This will be a slow harvest as growers try to pick-up as much lodged corn as possible.

As far as soybeans, the damage occurred during seed fill. The soybean plant takes energy from leaves and other plant parts and places this energy into the seed. Defoliation, broken stems, lodged soybeans all can be found.

Soybean plants will adjust growth for the condition of the individual plant. Four days after the injury, we are seeing brown pods which the soybean plant will abort and they will drop to the ground.

Soybeans will be affected greatly when leaves are lost and stems are bruised and cut. This damage occurred during the critical seed fill. You can inspect your crops now and check for pod drop. With injury occurring this late in the season, plants will not compensate. They will set as much seed as each individual plant can with the stress placed on it.

The straight wind laid soybeans over in many fields. The shading affect of plants lying on top of each other will reduce yield.

For more information, contact Wayne Flanary at (660) 446-3724 or Heather Benedict at (660) 425-6434, Regional Agronomists, University of Missouri Extension.

## BEEF PRODUCERS SEMINAR SET FOR NOVEMBER 15, 2011

by James Humphrey, Livestock Specialist

Cattle and forage producers should mark their calendars for the 2011 Beef Producers Seminar slated for Nov. 15 at the Nodaway County Administration Building in Maryville, Mo. This year's seminar will have presentations focusing on forage management, agriculture and governmental updates, and a presentation on the beef industry outside the United States.

The program begins at 6:00 p.m. with Ky Pohler, Graduate Student with University of Missouri Animal Science Department, discussing "Brazil's Beef Industry and Their Reproductive Management Strategies." Next, Blake Hurst, Missouri Farm Bureau President, will give us an update on "Governmental Issues Affecting Agriculture". After supper, Bob Salmon, a beef and forage producer and Al Decker, Regional Livestock Specialist in west central Missouri, will

discuss their "New Zealand Style of Intensively Managing Forages" in west central Missouri.

An evening meal will be served during the program, and there is a \$20 registration fee due to the Andrew County Extension Center by November 11. Sponsors include the American Angus Association<sup>®</sup> and University of Missouri Extension.

To register for the seminar, or for more information, contact the Andrew County Extension Center at (816) 324-3147.



## TESTING TALL FESCUE PASTURE FOR ENDOPHYTE

by Amy Schleicher, Livestock Specialist

It is widely known that most tall fescue pastures are infected with a fungal endophyte which, when consumed by livestock, can cause fescue toxicosis. Testing tall fescue for its level of infection can help producers make decisions on how to manage those pastures to reduce the negative effects on livestock. In this article, the process for testing tall fescue pastures for the endophyte will be outlined.

Most producers who wish to have their pastures tested will likely have experienced issues with animals consuming infected fescue. Testing will give the producer a benchmark to work from. In all likelihood, most pastures will be highly infected.

Samples must be taken during the time of year when the endophyte is most likely to be present in the tillers. That is when the plants have been actively growing for at least a month, usually in spring and fall.

Equipment needed for sampling includes: a sharp knife, buckets, scissors, trash bag, cardboard box (if shipped overnight) or insulated box with cold pack (if shipped using a method other than overnight delivery).

A set of samples must come from fields with the same seeding date and management. Pastures seeded with the novel endophyte-infected fescue should not be tested.

The samples should be representative of the field, so take samples randomly while walking in a zigzag pattern, making sure to avoid areas like ditches, ponds, feeding sites, and borders unless they make up more than 20% of the stand.

The process for sampling can vary by laboratory. Visit with your regional Extension specialist about which lab to use and how to sample. In the case of the lab used in this example, tillers were cut below the soil surface and included the upper roots so the clump stayed together. When all the samples were taken, the roots were trimmed and the soil removed. Care was taken not to include other species in the clumps.

The number of samples needed depends on the pasture size. For the laboratory used for the purposes of this article, less than five acres required 20 specimens; 5-10 acres required 40 specimens; more than 10 acres required at least 50 specimens (or more for larger fields).

The test results will only be as good as the care given to the samples. Do not let them sit in the hot sun; send them immediately or refrigerate until they can be sent. Overnight delivery is best, and the earlier



in the week, the better.

In the photo shown above, a cardboard box lined with a 13-gallon trash bag was used to ship the samples. The bag was tied and the submission form was placed outside the trash bag. In the interest of preserving the integrity of the samples and for quicker results, the samples were shipped overnight. However, it would also be possible to ship in an insulated container with cold packs.

The cost of the test will depend on the lab; in this example, for 80 tillers the cost was \$60, not including the overnight shipping fee. There are a number of labs that will test tall fescue but it is important to choose one that does actually test for the endophyte rather than simply looking for it under the microscope.

The test results will indicate the percentage of tillers submitted that were infected with the fungal endophyte. This is determined using the immunoblot laboratory procedure. Samples taken in northwest Missouri in fall 2010 in Nodaway and Clinton counties showed 84% and 79% levels of infection, respectively. As mentioned earlier in this article, expect results to be high. These both are considered high levels of infection and must be managed to reduce toxic effects on livestock.

When the test results arrive, work with an Extension specialist to determine the steps that need to be taken. For additional information, refer to the publication "2009 Results: Improving Tall Fescue Production in Northwest Missouri with Legumes and Timing of Nitrogen Application" for the article on the tall fescue endophyte.

## CASH RENTING FARM LAND

by Randa Doty, Ag Business Specialist

Cash renting farm land continues to be a popular choice among land owners who want to eliminate the risk of agriculture commodities on the land. Other rental agreements may include crop-share or a combination of cash rent and crop-share. In a cash renting agreement the tenant pays a fixed amount to the landowner in exchange for the use of the land and any improvements to the land. With a cash rental agreement the tenant is free to make management decisions and receives all the profits. However, the renter assumes all the risk of production and must endure all the capital expenses on the farm. Cash renting can benefit the land owner by assuring them a fixed income on the farm and with worries about price risk and the uncertainty of yields.



The University of Missouri just released the results of their most recent cash rent survey in the **2011 Cash Rental Rates in Missouri**. These rates were compiled using the survey responses of 226 Missourians who are involved with cash renting farm land. Every rent situation is different so this guide should be used as a reference in addition to considering other factors in your area, including: average yield, soil types, the number of acres available for rent in the area, and the demand for rental land. The guide includes rates of crop and pasture land by acre, crop land by yield, pasture by stocking rate, and rates for farm buildings.

For more detailed information or a copy of 2011 Cash Rental Rates in Missouri visit your local MU Extension office and ask for MU Guide G427.

## KEEP SAFETY ON EVERYONE'S MIND

by Kevin Hansen, Ag Business Specialist

Fall harvest is upon us once again. Now is the time to advise all family members and employees as well as remind ourselves that accidents are lurking around us if we are impatient or careless. Accidents happen all too often and the majority of them could have been avoided if precautions were taken. The agriculture industry accounted for 715 deaths and 80,000 disabling injuries in 2007. Agriculture workers had the second highest death rate among the major industry divisions. You read the headlines just as much as I do. "Man Dies in Grain Bin." "Tractor Rollover Kills Two." "PTO Injures Man While Working." The topics are numerous just like the headlines. In every situation, there harbors a danger. So what can be done to prevent all this from happening? The first key to success is to not over estimate your abilities or the abilities of someone you supervise. Adequate training of personnel is always in the best interest even if it takes a little extra time. Placing age oriented jobs in the hands of those who are physically and mentally capable of handling the job is another good start to safety precaution. The next step is to ensure that all guards and shields are in place so that you and everyone around you has a safe working environment. Another safety precaution is to take time to review safety hazards within the work place with all employees. Whether old or young, a little refresher

course of the hazards around us makes everyone think twice before performing a task. One would be surprised at the number of hazards we work around each and every day around the farm and consider them normal working conditions. This doesn't have to be and teaching this to the next generation can help reduce the hazards of the work environment.

Many articles and news releases go out this time of year to remind people of the dangers in agriculture. However, it should be known that even though a majority of the farming accidents happen during the fall, this is a short part of the entire year. Safety needs to be part of your life seven days a week all year long. Only then will reductions in farming related accidents decrease as the years go by.

You might ask yourself, "Why is an Ag Business individual writing about safety"? One answer could be ... Profitability! How productive and profitable will your operation be if an injury or death takes place on your farm. Who will take over or assist if help is needed? According to the National Safety Council, nearly three billion dollars annually is subjected to caring for injuries, rehabilitation, and loss of economic wealth due to these accidents. Therefore, protect your farming operation and build "safety shields" around you, your family, and your employees and educate them to ensure a proactive and productive life.

## A SCHOOL WITHOUT WALLS: MU HIGH SCHOOL ONLINE LEARNING PROGRAM

by Dr. Meridith Berry, Information Technology Specialist

The bells in the traditional schools are ringing in the new school year, and children are traveling to their schools for the scheduled day. This well-ordered model works for most students, but for those who need more flexibility, and a more independent approach to learning, the University of Missouri offers online courses for students third grade through high school.

The independent study format of online learning allows students to learn at their own pace. They have the flexibility to pursue extracurricular activities, challenge themselves academically, or acquire a quality education in a nontraditional setting. Students who are training for athletic competition, pursuing entertainment careers, are homebound, or whose families travel during the traditional school year find online learning options fit their needs.

Classes are designed to help students recover credits or get credits for early graduation. They can take classes not offered in their school, take more challenging classes, or take dual enrollment and Advanced Placement classes for a head start in college. MU High School offers two fully accredited programs for a general high school diploma and a college preparatory diploma. The dual credit classes offer MU college credits at a 50% reduction in cost.

Most classes are asynchronous, meaning students can sign up anytime and work at their own pace. For those students who need more time, the schedule will accommodate. Classes take as few as six weeks and up

to nine months to complete. There are more than 190 high school courses including 40 for gifted students. Students have prompt responses from instructors and access to class materials 24/7 through the Internet.

In addition to the content, students learn time management skills through the independent study responsibilities and sharpen their critical thinking skills as they prepare the lessons for submission. Beth transferred to MU High School at age 16. She wanted to be a ballet dancer but could not attend public school and maintain the rigorous 8 hour a day practice schedule. "There is no way she could have graduated and done this," said Beth's mother, Karen. MU High School offered her the flexibility and tailored a program to help her graduate while continuing the rigors of daily ballet practice. Beth graduated ahead of her peers with a 3.9 grade point average. College is in Beth's future, but today she lives her dream and dances full time for the Houston Ballet.

In 2009-2010, over 10,000 students were enrolled in high school courses. More than 700 students were actively pursuing their high school diplomas. The MU High School graduating class of 2011 represented thirteen foreign countries and nineteen states. For more information about MU High School, go to [edis@missouri.edu](mailto:edis@missouri.edu), [www.facebook.com/muhighschool](http://www.facebook.com/muhighschool), or contact your local Extension office.

## EXPERT ADVICE COMING TO A PLAYLIST NEAR YOU

by Debbie Johnson, Radio Producer/Director

Now everywhere you go, advice from MU Extension can go with you. *Extension on the Go*, a new weekly podcast available on iTunes, will give specialists a platform to share their knowledge and highlight programs.

Created by MU's Cooperative Media Group, *Extension on the Go* hopes to draw attention to MU Extension's expertise and program areas in a user-friendly way.

Podcast episodes will be about 3-6 minutes long and will cover topics ranging from health and nutrition to personal finances to home and garden.

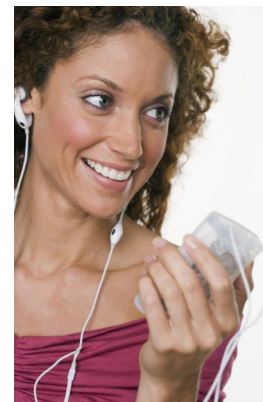
The first guest was **Vera Massey**, nutrition and health education specialist and trainer/teacher for MU Extension's Taking Care of You program. She talked

about the importance of understanding all the dimensions that make up a whole person and how they are vital for keeping you healthy and happy.

Listeners are encouraged to suggest topics, comment on episodes and ask questions.

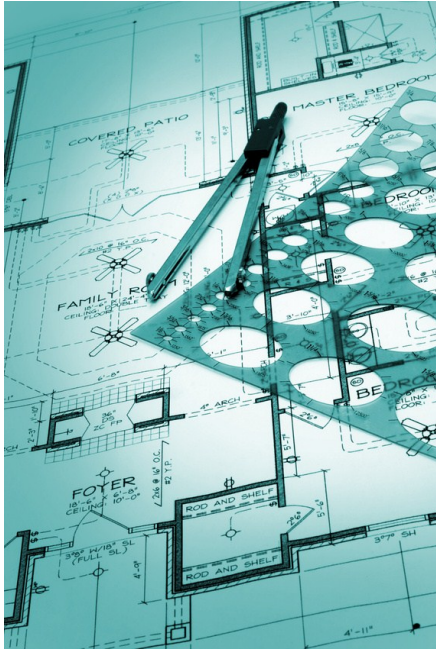
**Extension on the Go** podcasts will be available every Friday on iTunes and at [www.radiodeege.com/Podcasts](http://www.radiodeege.com/Podcasts).

(if you subscribe, you will get a message when new podcasts are posted, usually on Fridays).



## UNIVERSAL DESIGN-WHAT DOES IT REALLY MEAN?

by Connie Neal, Housing and Environmental Design Specialist



Universal Design, Accessible Design or Adaptable Design are frequently used interchangeably. According to the Center for Universal Design at North Carolina State University (NCSU), Universal Design refers to “Items that are usable by most people, regardless of their level of ability or disability thus can be considered

universally usable.” Many **accessible** and **adaptable** features are universally usable. However, it is important to understand the difference in these three concepts.

Accessible Design in general means that the dwelling meets prescribed requirements for accessible housing with features such as wide doors/doorways, sufficient space to maneuver a wheel chair, lever or “D” shaped hardware, grab bars in bathrooms, knee spaces under sinks and counters, seats at bathing fixtures, various types of audible or visual signals, controls or switches in easy to reach locations, zero clearance entries as well as accessible routes through the house. These features are permanently fixed and visually apparent. Mandatory requirements for accessible housing vary widely and are found in state, local and model building codes and agency regulations such as HUD programs and the Fair Housing Amendments Act.

Adaptable Design has accessible features that a fixed accessible home would have but allows the builder or owner to omit or conceal certain items until needed. Adaptable features are either adjustable or capable of being easily accessed to adapt the home to individual needs or preferences. According to the Center for Universal Design at NCSU, many non-disabled people prefer not to live in accessible units due to the appearance of clinical looking grab bars and knee spaces in bathrooms and kitchens that sacrifice base cabinet storage space. It was also noted that

adaptable features are a marketing advantage for owners and occupants as they allow dwellings to be more closely suited to their users.

Most of us have encountered that situation when we have moved and we weren’t sure if that sofa was going to go through the door, or around the corner. If that house or apartment had been universally designed, it would never have been an issue. Universal Design allows for flexible, adaptable, user efficient space to accommodate everyone’s needs or requirements no matter the age, size or abilities.

Universal Design makes good building sense. Its features can easily be incorporated in new construction for about 1-3%. Research indicates that retrofitting runs on average around 10 – 15% for homes and as high as 30% on commercial buildings. Those figures also vary some geographically. Using an open floor plan lends itself well to any type of design and helps eliminate heavy traffic areas. Some easier features to incorporate in new construction are wider doorways/hallways, raised electrical outlets, rocker panel light switches, and raised dishwashers. Dishwasher drawers are another option. Non-skid or matte finish tile on floors and multi-level cabinet heights work well for two and three cook kitchens or for individuals with physical challenges. Adding a peninsula to a cabinet and lowering the counter height for dining to accommodate all users is another often used feature. Using roll-out trays and lazy susans in cabinets provides easier access.

Roll in showers are another popular feature, no matter what your situation. A 5 foot radius is needed to turn a wheel chair so should you need assistance, this type of spacious shower allows room for that as well. The decline needed in the floor is only 1/8 inch to allow water to flow toward the drain. Bathtubs can also be designed with a wide seat at the end to allow someone who has the upper body strength to move from a wheel chair to the tub with ease. Cabinet fronts for kitchen and bathroom sinks can be designed using heavy magnets that allow for easy removal should one need to make it accessible for a wheel chair. Another option during new construction, is to wire a home with “Smart Home” capabilities should the owner ever wish or need to have features that would allow the home to operate on voice command as well as features that address visual and audio challenges. Adaptable features to include necessary blocking for grab bars can be included in new construction thus eliminating the

(Continued on page 7)

*(Continued from page 6)*

need to open an existing wall. Controls for bathtubs/showers can be located off center toward the outside making them easier to reach.

Some fairly inexpensive ways to retrofit would be changing cabinet hardware, if needed, lever type handles on doors and faucets, rocker panel light switches, and adjustable rods and shelves. Elevating front loading washers and dryers are also features that would make them more accessible and easier to use as part of a retrofit.

According to a report by the Center for Universal

Design, NCSU, incorporating Universal Design requires an understanding and consideration of the broad range of human abilities throughout the lifespan. Creative application of that knowledge results in products, buildings and facilities that are usable by most people regardless of their age, agility, physical or sensory abilities.

Understanding the differences in adaptable, accessible and universal design will help consumers make choices based on their needs as well as help them prepare for possible future housing requirements while considering costs and personal choices.

## THE PARENTING TOOL BOX

*by Don Miller, Human Development Specialist*

Capital One might ask on their commercials 'what's in your wallet' but when it comes to parenting I am more interested in what is in your tool box. More often than not, we will parent the way we have been parented, so the methods we use to parent, such as time out, will be what our parents used with us. Generally, there are more strategies that can be used than those of which we are aware. Society usually put parents down that use spanking, but if that is all someone is familiar with – the only tool they know - then what will they most likely use?

I like to use the example of a tool box to explain how this can work. If you are building a house and only have one tool in your tool box and it is a hammer, or you have many tools but only know how to use the hammer then how well will you be able to build a house? There are many things you can do with just a hammer (of course you have the building supplies you need such as boards, nails, etc.). Now you might not be able to do everything you would like and there are many more tools that are much more effective than a hammer when it comes to building different parts of a house. Also, there are tools available now that we did not have in the past that can make it faster and easier to build. Some tools work better for some projects than for others. I think you are probably getting the point. Training on how to use these tools can also be very helpful and necessary.

The same thing applies to your parenting tool box. If your parenting tool box has only one tool like time out, then how effective of a parent will you be? You can still be a good parent but you are not using all of the resources that are available to you. If you were raised by parents that did their best but had few tools to work with then you probably don't know any other way. No one expects every parent to have every parenting tool and know how to use them. Still, we

can learn or be trained in other methods and strategies that will help us be better at our parenting responsibilities and enjoy them more. Not every child responds to parental discipline in the same way (If you have more than one child you know this fact very well!). So, having a whole arsenal of parenting tools can be very valuable. Having multiple tools available to use in many situations is a real plus for parents. Different tools work for different ages. I also tell parents that if they don't feel comfortable with a certain tool then they probably won't use it. So what is in your tool box? If you don't have the tools you need then where do you get them? You can talk to other parents and see what works for them. There are parenting classes you can take. The University Of Missouri Extension teaches classes and we have materials on line - <http://extension.missouri.edu> - as well as at our local offices. One guide sheet I would recommend for a place to start is GH 6119 - Positive Discipline and Child Guidance. It contains some great tools to put in your parenting tool box if you don't already have a set of them in there. Best wishes as you build your family!



## MISSOURI VOLUNTEER FORUM

November 4 & 5, 2011  
 University of Missouri, Columbia  
 Registration fee: \$40.00  
 Registration deadline: October 15th

You give your time and commitment directly from the Heart!

For our wonderful volunteers, we offer a conference designed especially for you. Come, experience, learn, refresh, and meet others who give so much to the 4-H program.

Just a few of the highlights:  
 Friday evening enjoy pizza, Share Fair, and Skill-a-thons at the Quality Inn

Saturday (8 am to 4 pm) there's something for everyone. Select from 5 workshops.

Examples of offered workshops:

- \* 4-H 101
- \* Entrepreneurship
- \* Science Activities
- \* Social Media Skills
- \* Clothing Projects
- \* MOVE
- \* Robotics
- \* Aerospace
- \* Geospatial
- \* Parliamentary Procedure
- \* Alice
- \* Public Speaking
- \* Home environment
- \* Leadership
- \* Recognition
- \* Managing Volunteers
- \* Horses
- \* Clover Kids
- \* Ways to Enhance Any 4-H Project.



## MISSOURI 4-H HALL OF FAME HONORS 46 4-H LEGACIES

Making the best better for generations of Missouri 4-H'ers, 46 4-H luminaries joined the Missouri 4-H Hall of Fame, held August 14 at the Missouri State Fair. Inductees from 35 counties established a legacy totaling 1,600 years of service to 4-H. A record crowd of 650 family members and friends attended the fifth annual event.

"This celebration acknowledges the contributions of distinguished 4-H leaders - past and present," said Missouri 4-H Foundation Chair Ruth Tofle.

The Missouri 4-H Foundation recognizes individuals who have created a legacy of service to 4-H by honoring them with membership in the Missouri 4-H Hall of Fame.

"These leaders have made exceptional contributions to the lives of Missouri 4-H members," said Missouri 4-H Foundation Executive Director Cheryl Reams.



## 2012 STATE 4-H CONGRESS

May 30 – June 1, 2012  
 Wolpers & Johnston Halls  
 1100 Rollins, Columbia, MO

Registration deadline: April 1, 2012  
 Register through each county office

Missouri State 4-H Congress provides quality age appropriate learning experiences for 4-H youth ages 14-19 through learnshops and other educational opportunities.

For additional information, contact Joyce Taylor, (573) 882-6393 or by email [TaylorJL@missouri.edu](mailto:TaylorJL@missouri.edu)  
 4-H Center for Youth Development, MU Extension.

## NORTHWEST REGION'S INDUCTEES TO THE 2011 4-H HALL OF FAME

### Andrew County: John Duncan

During his 21 plus years of involvement, John has been a huge promoter of 4-H. Although his children have grown up, John continues to be a 4-H club co-leader, and doesn't miss a county 4-H council meeting. John helps new 4-H members understand the big picture; he gets them involved and helps keep them involved. John has been a great resource for Andrew County 4-H, and we are honored to nominate him to the 4-H Hall of Fame.



### Buchanan County: Phyllis Fisher

Phyllis Fisher has represented 4-H as a member, project leader, and club leader for 25 years. She stepped up to lead the Number 5 Club for many years, although she had no children or grandchildren in the club. Her love of 4-H propelled Phyllis to help the club flourish into the dynamic club it is today. Phyllis has been an influential person in the lives of many youth, and for that we thank her.



### Gentry County: Courtney & Mariam Goforth

For more than a generation, Courtney and Mariam Goforth have been mainstays in Gentry County 4-H, making memories along the way. Courtney taught leather craft at the picnic table; Mariam taught foods, and reacted coolly when a dish towel caught fire. One 4-H'er recalls that her earliest memories was seeing the Goforths active as 4-H project leaders, judges, and supporters whenever and wherever they were needed. Today, Courtney and Mariam enjoy working with 4-H kids; their energy, enthusiasm, and commitment never waver.



### Livingston County: Luzenia Arthaud

For 55 years, Luzenia served Livingston County as Sewing Leader, with a dedication that reflects her lifetime in 4-H. She joined 4-H in the 1920s, and was a member until 1937. In eighth grade, Luzenia and a friend were selected to give a state demonstration on baking bread. They traveled to Columbia and had an exciting time: she recalls that it was an exciting trip. For generations, Luzenia has touched so many lives, and has left a lasting impression of good character on the youth of Linn and Livingston counties.



## REGIONAL PROGRAM & ACTIVITY CALENDAR

### OCTOBER 2011

- 
- 10 Stay Strong, Stay Healthy-Chillicothe (1 of 20)**, Monday, October 10, 3:30 pm to 4:30 pm, Grand River Technical School, 1200 Fair Street, Chillicothe. Cost is \$40.00. Please contact Jessica Trussell at (660) 646-0811 to register.
- 
- 10 Advanced Stay Strong, Stay Healthy-Chillicothe (1 of 20)**, Monday, October 10, 4:30 pm to 5:30 pm, Grand River Technical School, 1200 Fair Street, Chillicothe. Cost is \$40.00. Please contact Jessica Trussell at (660) 646-0811 to register.
- 
- 13 Living a Healthy Life with Chronic Disease (1 of 6)**, Thursday, October 13, 10 am to noon, Harrison County Health Department, 1700 Bethany Ave, Bethany. This 6 session course will help people with chronic illness learn healthy ways to live with a disease. Knowledge and skills learned include those needed to manage and overcome physical and emotional problems caused by the disease. Registration by October 12. No cost. Please contact Janet Hackert at (660) 425-6434 or Christine Rucker at (660) 425-6324 to register.
- 
- 19 Got Trees?**, Wednesday, October 19, 6:30 pm to 9 pm, Clinton County Youth Building, 251 East Hwy 116, Plattsburg. Audrey Beres, Missouri Department of Conservation, will be presenting a program "All About Trees" focusing on the value of trees in our communities. Participants are welcome to bring tree questions/problems for assistance. No cost. To register by October 18, contact Clinton County University of Missouri Extension Office (816) 539-3765
- 
- 20 Focus on Kids**, Thursday, October 20, 5:30 pm to 8 pm, Livingston County Extension Office, 409 Washington Street, Chillicothe. The purpose of this workshop is to help parents learn how to nurture and support their children during and after their divorce. Cost \$35.00, cash or money-order only. Pre-registration is required. If you must cancel, please do so at least 24 hours in advance. Contact Jessica Trussell at the Livingston County Extension Office (660) 646-0811 to register.
- 
- 26 Poison Safety for Seniors**, Wednesday, October 26, 11:45 am to 12:05 pm, Marceline Senior Center, 229 West Hauser, Milan. This will be a program on Poison Safety for Seniors using the Poison Look-A-Like curriculum in Linn County. This program will also be repeated in Linn County. No cost. Contact Connie Neal at (660) 359-4040 or [nealca@umsystem.edu](mailto:nealca@umsystem.edu)
- 

### NOVEMBER 2011

- 
- 8 Annie's Project II: Women Marketing Grain & Livestock (1 of 4)**, Tuesday, November 8, 5:30 pm to 8:30 pm, Northwest Technical School, Maryville. Annie's Project is a comprehensive educational program and support network for farmwomen. The goal of this program is to increase farmwomen's knowledge about agriculture marketing terminology, commodity marketing channels, contracts, calculating specific hedge problems, and using options. Cost is \$40.00. Register by November 4 by contacting the Nodaway County Extension Center, (660) 582-8101.
- 
- 15 Beef Producers Seminar**, Tuesday, November 15, 6 pm to 9 pm, Nodaway County Administration Building, Maryville. Ky Pohler-Brazils Beef Industry and Their Reproductive Management Strategies; Blake Hurst-Agriculture and Governmental Update; Beef Supper 7 pm; Bob Salmon and Al Decker-Southern Missouri New Zealand Style Intensive Forage Management. Cost \$20.00. Contact Jim Humphrey at (816) 324-3147 or [humphreyjr@missouri.edu](mailto:humphreyjr@missouri.edu)
- 

## MISSOURI FARMERS CAN PLANT THE SEED TO HELP GROW THEIR LOCAL 4-H CLUBS

4-H clubs provide valuable learning experiences for youth interested in the agriculture industry. Through involvement in 4-H, kids develop the skills to become leaders in their communities. Simply put, today's 4-H members are the future of the industry.

Farmers in your county have the opportunity to help grow their local 4-H chapters. Through America's Farmers Grow Communities<sup>SM</sup>, sponsored by the Monsanto Fund, farmers can win \$2,500 for their favorite community non-profit. Last year, winning farmers directed \$402,500 to 161 4-H chapters across the country.

The program is part of a broad commitment by the Monsanto Fund to invest in farm communities, in order to highlight the important contributions farmers make every day to our society. Farmers can apply online at

[www.growcommunities.com](http://www.growcommunities.com), or call 1.877.267.3332 to apply by phone.

Farmers, age 21 and over, who are actively engaged in farming a minimum of 250 acres of corn, cotton, or soybeans, or 40 acres of open field vegetables, or at least 10 acres of tomatoes, peppers and/or cucumbers grown in protected culture are eligible. Farmers can enter now through Nov. 30, 2011. The program is open to all qualifying farmers, and no purchase is necessary in order to enter or win. Farmers who meet the eligibility requirements may enter regardless of previous participation. One winner will be drawn from each of the participating counties, and the Monsanto Fund will announce winning farmers and recipient organizations in January 2012.

# NORTHWEST REGION EXTENSION SPECIALISTS

<b><u>REGIONAL DIRECTOR</u></b>		<i>Regional Administrative Associate</i>	
Karma Metzgar, St. Joseph	(816) 279-6064	Jill Knadler, St. Joseph	(816) 279-6064
<b><u>HUMAN ENVIRONMENTAL SCIENCES</u></b>			
<i>Family Financial Education</i>		<i>Nutrition &amp; Health Education</i>	
Rebecca J. Travnichek, Savannah	(816) 324-3147	Janet Hackert, Bethany	(660) 425-6434
		Kelli Wilmes, Maryville	(660) 582-8101
<i>Housing and Environmental Design</i>		<i>Nutrition Program Associates</i>	
Connie Neal, Trenton	(660) 359-4040	Connie Griffith, Maryville	(660) 582-8101
		Debbie Herrold, Maryville	(660) 582-8101
<i>Human Development</i>		Tracy Minnis, Maryville	(660) 582-8101
Don L. Miller, St. Joseph	(816) 279-1691	Connie Mowrer, Maryville	(660) 582-8101
Jessica Trussell, Chillicothe	(660) 646-0811	Angie Rhoad, Maryville	(660) 582-8101
		Gina Ripley, Maryville	(660) 582-8101
<i>Family Nutrition Education Program Manager</i>		Sue Robison, Maryville	(660) 582-8101
Sara Brooke, Maryville	(660) 582-8101	Stephanie Weddle, Maryville	(660) 582-8101
<b><u>BUSINESS DEVELOPMENT AND PROCUREMENT</u></b>			
Clint Dougherty, PTAC, St. Joseph	(816) 279-1691	Tom Kelso, Oregon	(660) 446-3724
<b><u>COMMUNITY DEVELOPMENT</u></b>			
Jerry Baker, Rock Port	(660) 744-6231	Beverly Maltsberger, St. Joseph	(816) 279-1691
Wilson Majee, Princeton	(660) 748-3315		
<b><u>AGRICULTURE</u></b>			
<i>Ag Business</i>		<i>Livestock</i>	
Randa Doty, Maryville	(660) 582-8101	Shawn Deering, Albany	(660) 726-5610
Kevin Hansen, Chillicothe	(660) 646-0811	Jim Humphrey, Savannah	(816) 324-3147
Bob Kelly, St. Joseph	(816) 279-1691	Amie Schleicher, Rock Port	(660) 744-6231
<i>Agronomy</i>		<i>Horticulture</i>	
Heather Benedict, Bethany	(660) 425-6434	Tim Baker, Gallatin	(660) 663-3232
Wayne Flanary, Oregon	(660) 446-3724	Tom Fowler, St. Joseph	(816) 279-1691
<i>Natural Resource Engineering (Graves-Chapple Superintendent)</i>			
Jim Crawford, Rock Port	(660) 744-6231		
<b><u>4-H YOUTH DEVELOPMENT</u></b>			
<i>Specialists</i>			
Debbie Davis (Clinton, DeKalb, Caldwell)	(816) 539-3765	Becky Simpson (Davies, Harrison, Gentry)	(660) 663-3232
Annette Deering (Nodaway, Worth, Atchison)	(660) 582-8101	Ron Walker (Buchanan, Andrew, Holt)	(816) 279-1691
Shaun Murphy (Livingston, Mercer, Grundy)	(660) 646-0811		
<i>(Bolded county name indicates headquartered county.)</i>			
<i>Youth Program Assistants or Associates</i>			
Lisa Delameter (Mercer, Grundy)	(660) 748-3313	Julie Schmitt (Buchanan)	(816) 279-1691
Dale Hunsburger (Clinton, DeKalb, Caldwell)	(888) 449-2201(x 704)	Rick Smith (Buchanan 4-H LIFE)	(660) 646-0811
Teresa Kurtz (Holt, Atchison)	(660) 446-3724	Kari Stock (Harrison)	(660) 425-6434
Karla Parman (Worth)	(660) 564-3363	Carol Williams (Andrew)	(816) 324-3147
Elizabeth Richards (Livingston Reunification)	(660) 646-0811	Pat Wood (Livingston)	(660) 646-0811
Janet Sager (Gentry)	(660) 726-5610		
<b><u>HUNDLEY WHALEY SUPERINTENDENT</u></b>			
Bruce Burdick, Albany	(660) 726-3698		
<b><u>INFORMATION TECHNOLOGY</u></b>			
Meridith Berry, St. Joseph	(816) 279-1691		
<b><u>NEWSLETTER EDITORS</u></b>		<b>Toll-Free Numbers:</b>	
Meridith Berry & Bob Kelly, St. Joseph			
<b><u>LAYOUT DESIGNER</u></b>		DeKalb County	
Nicole Arn, St. Joseph		(888) 449-2101	
<b>Northwest Region's Small Business &amp; Technology Development Centers</b>			
Northwest Missouri State University, Maryville			
SBTDC Regional Office			
Dr. Frank Veeman		(660) 562-1701	
St. Joseph Satellite Office			
Rebecca Evans		(816) 364-4105	
Chillicothe Satellite Office			
Steve Holt		(660) 646-6920	

## FEATURE ARTICLES INSIDE THIS ISSUE:

### Human Environmental Sciences & Business Development

[Universal Design-What Does it Really Mean?](#)

[The Parenting Tool Box](#)

### Information Technology

[Expert Advice Coming to a Playlist Near You](#)

[A School Without Walls: MU High School Online Learning Program](#)

### Agriculture & Livestock

[Recreational Leases-Are They Right for You?](#)

[Beef Producers Seminar Set for November 15, 2011](#)

[Testing Tall Fescue Pasture for Endophyte](#)

[Cash Renting Farm Land](#)

[Keep Safety on Everyone's Mind](#)

### Agromony, Horticulture, & Entomology

[Wind & Hail Damage Missouri Crops](#)

### 4-H Youth Development

[Missouri Volunteer Forum](#)

[Missouri 4-H Hall of Fame Honors 46 4-H Legacies](#)

[2012 State 4-H Congress](#)

[Northwest Region's Inductees to the 4-H Hall of Fame](#)

[Missouri Farmers Can Plant the Seed to Help Grow Local 4-H Clubs](#)

### Regional Program & Activity Calendar

### Northwest Region Extension Specialists & Staff

*This is a publication that combines topics on Human Environmental Sciences, Horticulture, Agriculture, 4-H Youth Development, Business Development, and Community Development. It is published by extension specialists for individuals and families living in Northwest Missouri. Your local county extension council provides funding for this newsletter.*

*If you have received this newsletter in error or no longer wish to continue receiving it, contact Buchanan County Extension at (816) 279-1691.*

*Disclaimer: Special endorsement of products mentioned in this newsletter is not intended, nor is criticism implied of similar products not mentioned.*

UNIVERSITY OF MISSOURI  
 Extension

# NORTHWEST MISSOURI EXTENSION NEWS YOU CAN USE

University of Missouri Extension  
Buchanan County  
4125 Mitchell Avenue  
St. Joseph, MO 64507

NON-PROFIT  
U.S. POSTAGE  
PAID  
ST. JOSEPH, MO  
PERMIT# 2212

Contact the Buchanan County  
Extension Center at  
(816) 279-1691 or your local  
extension office to have your name  
added to or removed from this  
mail list.