

Brought to you by your livestock specialists.....



Shawn Deering, Gentry
 (660)-726-5610
 deerings@missouri.edu



Amie Schleicher, Atchison
 (660)-744-6231
 schleichera@missouri.edu



Jim Humphrey, Andrew
 (816)-324-3147
 humphreyjr@missouri.edu

DATES TO

REMEMBER:

- November 23rd-24th—
Extension Offices
Closed for Thanksgiving
Holiday
- November 27th-29th—
A.I. School—Thompson
Farm, Spickard
- November 30th—
Missouri Fence Law's
Meeting, Albany
- December 1st-2nd—
Missouri Livestock
Symposium, Kirksville
- December 2nd—North
Central/Northwest
Missouri Show-Me-
Select Heifer Sale,
Green City

Didn't make it to the MU Beef Research and Teaching Farm Field Day at South Farm near Columbia on October 7? Here are a few highlights.

Ron Plain, MU Ag Economist, expects calf prices to stay high in 2007-08 because of the effect drought is having on herd expansion. Feed prices will be up and feedlots located near ethanol plants will have an advantage.

Brent Bryant, President of MCA, said that a task force has been developed to work on the problem of livestock thefts. MCA's stand on animal ID is that it should be voluntary and market-driven. County health ordinances and the attempts to designate manure as a toxic waste are also issues the MCA is fighting.

Fred Ferrell, Missouri Department of Agriculture, reported that projects in the works include Missouri branded beef (a program manager is to be hired next year) and a \$0.10/lb tax credit for retaining ownership.

Steve Goff, Missouri Department of Agriculture, said as of October 6, there were 9,668 premises registered out of ~ 104,000. Missouri has passed legislation protecting the premise registration information.

Jim Williams, MU Animal Scientist, discussed the growing ethanol industry and increased availability of co-products. Plants in Missouri produce 500,000 tons of distillers grains each year. They are an excellent source of protein and energy, contain 65% undegradable intake protein, and are high in phosphorus. They have 125% of the energy of corn because of the fermentable fiber and fat they contain, without the negative effects on fiber digestion. Wet distillers grains have higher energy values than dried but transportation costs are greater. In feedlot diets, ADG is best at about 30% of the diet dry matter as distillers grains. Negative effects on carcass quality may occur at higher amounts (above 30%) since starch is a precursor to marbling, and distillers grains are low in starch. For 500-600 lb calves, the optimal level is 3-4 lbs per head per day. When fed to heifers in late gestation, DDGS increase reproductive and calf performance.

Bob Weaber, MU State Extension Beef Genetics Specialist, offered tips for beef sire selection. See the November 1st, 2006 edition of the NW Stock Talk for his suggestions.

Kent Haden, MFA Incorporated, talked about "getting what's due to you". He recommends improving quality grades, utilizing synchronization and AI, and using high accuracy EPD bulls (to increase value of replacements, and reduce respiratory disease).

Organic Sales Growing

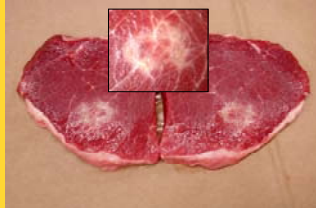
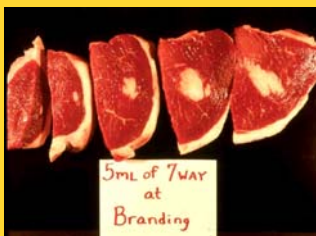
Reports continue to verify significant growth in organic food sales. Meat and poultry are no exception, as shown in the following table.

Organic Meat and Poultry Sales, 2001-2004

Year	Sales at Current Prices (Million \$)	% Change from Previous Year
2001	26	—
2002	33	26.9
2003	62	87.9
2004	121	95.2

Source: Meatingplace Magazine

These photos show the problems associated with injection site lesions. We all are becoming aware of the fact that we are beef producers, not cattle producers. Would anyone want to purchase and consume the beef in these pictures? Adhering to sound Beef Quality Assurance practices is extremely important!



Campus Corner

Evaluating Cow Herd, Cow and Calf Productivity—Part I Dr. Bob Weaber, State Extension Beef Genetics Specialist (573)-882-5479, weaberr@missouri.edu

Following the fall calf marketing is a great time to evaluate the productivity of your cowherd and each cow in it. Herd level measurements are computed using actual performance data. A common measure of cow-calf herd productivity is the weaning weight per cow exposed. Simply take the sum of all calf weaning weights and divide by the number of cows you exposed to bulls during the 2005 breeding season plus the number of purchased pregnant cows. This measure takes into account conception rate, calf survival at birth, calf survival to weaning and calf weights. You do not need individual calf weights; draft weights of all the calves will work fine.

Other useful measures to point to management strengths or areas for improvement include conception rate of cows exposed, calf survival rate (at birth and weaning, as a percentage of cows calving), and percent calf crop weaned. A useful benchmark measure of economic performance is breakeven price, which is reported in dollars per hundred weight. Breakeven price is the point where profit or losses begin. It is a function of all fixed and variable production costs divided by the total number of hundred weights of calf you produced.

??Question of the Week??

Where is the best location to give intra-muscular (IM) injections to beef cattle?

Sometimes we take for granted that everyone understands how to do something that many consider routine. This is a very important question and one that every beef producer needs to know the answer to. Always give intramuscular (IM) injections in the neck. One of the first National Beef Quality Audits identified injection site lesions in the round and top sirloin butt region as a major problem. Since that time a great deal of effort has been made to make sure that these injections (especially the clostridials) are given in an area of lower priced cuts...the neck.

Northwest Region Extension Agriculture and Natural Resource Contacts

Agronomy

Wayne Flanary
(660)-446-3724
flanaryw@missouri.edu

Vacant
Harrison County
(660)-425-6434

Ag & Natural Resources

Jim Crawford
(660)-744-6231
crawfordj@missouri.edu

Vacant

Ag Business

Kevin Hansen
(660)-646-0811
hansenk@missouri.edu

Bob Kelly
(816)-279-1691
kellyr@missouri.edu

Horticulture

Tom Fowler
(816)-279-1691
fowlert@missouri.edu

Tim Baker
(660)-663-3232
bakert@missouri.edu

"Equal opportunity is and shall be provided to all participants in Extension programs and activities, and for all employees and applicants for employment on the basis of their demonstrated ability and competence without discrimination on the basis of their race, color, religion, sex, sexual orientation, national origin, age, disability or status as a Vietnam-era veteran. This policy shall not be interpreted in such a manner as to violate the legal rights of religious organizations or military organizations associated with the armed forces of the United States of America."