

Brought to you by your
livestock specialists.....



Shawn Deering, Gentry
(660)-726-5610
deerings@missouri.edu



Amie Schleicher, Atchison
(660)-744-6231
schleichera@missouri.edu



Jim Humphrey, Andrew
(816)-324-3147
humphreyjr@missouri.edu

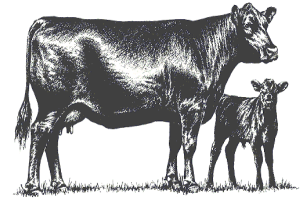
DATES TO

REMEMBER:

- July 30—Focus on Forages V, MU Hundley-Whaley Center, Albany
- August 1—Gentry County Cattlemen's Tour, Iowa
- August 8-18—Missouri State Fair, Sedalia
- August 21—North Missouri Grazing Group Day Trip, Linneus
- August 27—MU Graves-Chapple Research Center Field Day, Corning
- August 28—MU Hundley-Whaley Research Center Field Day, Albany

Gentry County Cattlemen's Tour

The Gentry County Cattlemen's Association has an interesting day trip to Iowa planned for Thursday, August 1. Plans are to board a tour bus at the MU Hundley-Whaley Center in Albany at 7:30 that morning. Our first stop will be at the John Deere Des Moines Works plant in Ankeny. This plant makes sprayers, tillage equipment and cotton harvesters. We will then grab a quick lunch (on your own) and the next stop will be at the Iowa State University Vet School in Ames where we will tour both their large and small animal teaching facilities. The third stop will be at Hawkeye Breeders. Hawkeye is a custom bull stud/semen collection facility located in Adel. We will then eat supper at Rube's Steakhouse in Waukee (on your own) and return to Albany by approximately 9:00 p.m. Cost to attend is \$25.00 and you do not have to be a member of the Gentry County Cattlemen's Association to attend. For more information or to sign up for the trip, contact Chris Derks at (660)-483-0194 or Shawn Deering at (660)-726-5610.



Focus on Forages Meeting

The fifth annual "Focus on Forages" meeting will be held on Tuesday, July 30 at the MU Hundley-Whaley Center in Albany, MO beginning at 6:00 p.m. Topics to be covered that evening by regional MU Extension specialists include: tour of fescue and legume plots, tour of novel endophyte fescue plots, fescue toxicosis, managing pasture weeds, double-cropping hay ground, true cost of hay production and an overview of the cover crop project. Cost to attend is \$15.00 and includes supper and copies of materials presented. If you are planning to attend, please RSVP to the Gentry County MU Extension office at (660)-726-5610 by Tuesday, July 23 so that accurate meal preparations can be made.

North Missouri Grazing Group Day Trip

The north Missouri grazing group will be taking a day trip on Wednesday, August 21. Vans will be leaving the Buchanan County extension office in St. Joseph at 8:00 a.m. An additional pick-up location along US Hwy 36 will be confirmed later. The group will be touring the MU Forage Systems Research Center (FSRC) located near Linneus. Dave Davis, FSRC superintendent, and Justin Sexten, MU extension state beef specialist, will lead the tour of the FSRC facility. Over the years, a great deal of grazing and forage research has been conducted at the FSRC. This is the location that developed the concept of management intensive grazing (MIG) and that has held multiple grazing schools. There will be an additional stop on the way home that is not yet confirmed. Transportation and the noon meal will be provided. For further information, contact Jim Humphrey at (816)-324-3147 or by email at humphreyjr@missouri.edu.



KSU Focus on Feedlots Report

Kansas State University Extension recently released their May 2013 closeout information in their latest Focus on Feedlots report which includes data from ten different Kansas feedlots. The 25,113 steers averaged 1319 pounds, 160 days on feed, 3.35 average daily gain, 6.01 feed/gain dry basis, 2.28% death loss and \$125.44 average cost of gain. The 26,886 heifers averaged 1203 pounds, 156 days on feed, 3.06 average daily gain, 6.23 feed/gain dry basis, 2.20% death loss, and \$130.91 average cost of gain.

Summer Slump

We are entering the time period where cattle that are grazing endophyte-infected fescue pastures may begin to show signs of “summer slump”. Most cattlemen that have dealt with “hot” fescue are very aware of this condition and the signs that the cattle exhibit: higher respiration rates, excessive salivation, decreased weight gain, spending more time in the shade and standing in ponds if they are available. There are a few things that can be done to help cattle keep gaining during this time period. In a perfect grazing system, moving the cattle off of fescue pastures and onto another type of forage would be the best option. However, most producers do not have alternative pastures to rotate to. The fescue is less toxic if it is in a vegetative state. Keeping pastures closely grazed or even clipped will help to keep the toxicity level of the fescue lower. Another strategy is dilution of the diet. Adding legumes to pastures not only fixes nitrogen in the soil, but it also helps decrease the amount of toxic fescue consumed. Feeding a supplement can also help dilute the fescue in the diet. For some, renovating pastures by eliminating the old fescue and replacing it with something else might be a consideration. Our regional agronomists can assist you with that process.



??Question of the Week??

I have a small number of goats. I have been told that they need tags before I can sell them. What, where, and how do I get them?

Most likely, you are referring to scrapie tags. Scrapie is a disease that is always fatal and is a transmissible spongiform encephalopathy (TSE). The tagging system is an effort to help eradicate the disease from US sheep flocks and goat herds. Tags are provided at no cost to producers by calling the Missouri Department of Agriculture’s veterinary services division at (573)-636-3116. If you have not ordered tags before, they will issue you premise identification number before sending the tags.

Northwest Region Extension Agriculture and Natural Resource Contacts

Agronomy

Wayne Flanary
(660)-446-3724
flanaryw@missouri.edu

Heather Benedict
(660)-425-6434
benedicth@missouri.edu

Wyatt Miller
(816)-776-6961
millerww@missouri.edu

Natural Resources

Jim Crawford
(660)-744-6231
crawfordj@missouri.edu

Horticulture

Tom Fowler
(816)-279-1691
fowlert@missouri.edu

Tim Baker
(660)-663-3232
bakert@missouri.edu

Agriculture Business

Kevin Hansen
(660)-646-0811
hansenk@missouri.edu

Randa Doty
(660)-582-8101
dotyr@missouri.edu

Whitney Wiegel
(660)-584-3658
wiegelw@missouri.edu

Bob Kelly
(816)-279-1691
kellyr@missouri.edu

Parman Green
(660)-542-1792
greenp@missouri.edu