

Mercer County Fair
Beef Show
Saturday, July 18, 2009
Registration: 8-9 am
Show: 10 am

Mercer County Beef Rules:

ALL MISSOURI STATE FAIR RULES APPLY UNLESS OTHERWISE NOTED!
ALL BEEF MUST CHECK IN UPON ARRIVAL AT FAIR GROUNDS. HEALTH
PAPER AND REGISTRATION MUST BE AVAILABLE UPON REQUEST.

All exhibitors must be members in good standing of their respective clubs.

1. EXHIBITOR must be able to handle livestock. Beef Committee will rule when an EXHIBITOR is unable to handle livestock safely.
2. Beef shows are open to all 4-H and FFA members in the State of Missouri. The open bucket calf show is open to any youth under 8 years of age as of January 1.
3. All breeds eligible to show at State Fair are eligible in breeding class at this show. If a class is not offered one will be made.
4. All animals shown as a purebred in breed classes must have registration papers on file at the fair office. Lack of papers mean the animal must show in the appropriate crossbred class. Photocopies of registration papers are acceptable, with the originals on demand.
5. All Livestock will be in compliance with the state health regulation, if any, as required by the MO Department of Veterinary Division, check with local Veterinarian.
6. Pen/stall fees must accompany registration. They are Beef and Dairy, \$2 per head.
7. Exhibitor is responsible for clean up. Premium monies will not be paid until each exhibitor has cleaned his/her stall area and tie out area.
8. All livestock that leave the grounds prior to the release date specified by the schedule without approval of the division superintendent will not be eligible for premium money or other prizes.
9. Mercer County Beef exhibitors must have their livestock in place by 7-9 pm the night before the show; Out-of-county livestock must be in place by 8 am the day of the show.
10. Grievances and complaints will only be accepted if in writing and signed. These must be submitted to the chairperson before the show starts. Fair Board decisions are final.

THE MERCER COUNTY FAIR BOARD IS NOT RESPONSIBLE FOR
PERSON INJURY OR ACCIDENTS INCURRED ON THE FAIRGROUND OR
ADJOINING PROPERTY.



BEEF SHOW

Bulls	100
Jr. Heifer Calf January 1 To April 1, 2008	101
Sr. Heifer Calf September 1 To December 31, 2007	102
Late Summer Yearling July 1 to August 31, 2007	103
Early Summer Yearling May 1 to June 30, 2007	104
Yearling Heifer March 1 to April 30, 2007	105
Early Jr. Yearling January 1 to February 28, 2007	106
Sr. Yearling Heifer September 1 to December 31, 2006	107

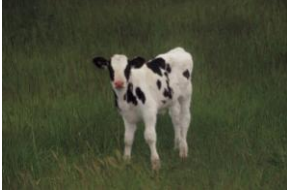
Breed Champion and Reserve Champion
Supreme Champion Female
Supreme Champion Bull

Steers	108
Home Raised Steers	109

Grand and Reserve Champion Steer
Showmanship 13 and under
Showmanship 14 and over

Breed Codes

A Angus
B Brangus
CH Charolais
CHI Chianina
G Gelbvieh
H Hereford
LH Longhorn
LM Limousine
MA Maine Anjou
RA Red Angus
SA Saler
SH Simmental
X Crossbred



4-H BUCKET CALF SHOW

Exhibitor 8 & Above	110
---------------------	-----

BUCKET CALF REGULATIONS

1. This project is suggested for youth ages 7-12
2. The calf may be an orphan or newborn, male or female, dairy beef or cross, fed on a bucket or bottle. One calf per exhibitor per year.
3. Select calf born between January 1 and June 1 of the current year.
4. Classes will be show at halter.
5. The judge may ask exhibitor general knowledge questions.



DAIRY SHOW

Age	Female	Bulls
2 years and older	111	114
1-2 years old	112	115
12 months and under	113	116

Breed Champion & Reserve Champion
 Grand & Reserve Champion Female
 Grand & Reserve Champion Bull
 Showmanship 13 and under
 Showmanship 14 and over