



## Trip to Mizzou ... And a Vineyard, Too!

Article and Photos by Sherry Adams, Master Gardener and Ace Reporter



The Master Gardener Annual Bus Trip on May 3<sup>rd</sup> took us on a great loop around Central Missouri. We set out from the Blue Springs Extension Office on our trek to Columbia where our first stop was the University of Missouri campus. There we embarked on a guided tour of the campus gardens where we saw many examples of classic design, including some patterned after Thomas Jefferson's designs at the University of Virginia. The Mizzou campus includes 289 acres of green space and requires 55 people

to maintain it. Talk about a big garden! We also saw many Plants of Merit in use at the gardens.

After leaving the campus we traveled back toward Kansas City and then off some back roads to a wonderful nursery called Vintage Hill Farms. It was a good thing there was a lot of cargo space on the bus, because many of us made quite a big haul. The owner of the nursery also lived on site so we were able to tour his gardens as well.

### INSIDE THIS ISSUE

Hotline FAQ	2
Garden Tour Needs	2
Eating from the Garden	3
Educational Opportunity	3
Garden Tour Plant Drop Off Sites	3-4
Gardening & Composting	4
2009 Int'l MG Conference	4
MG Tour to Costa Rica	5
"Green Acres"	6
Grow Native! Container Contest	6
Urban Prairie Rain Garden	7
Steering Committee Minutes	8
Hot Spot	8
Hotline Calendars	9-10
Volunteer Log Sheets	11-12
Garden Tour Schedules	13-14
Social Scene	15

### SAVE THE DATE:

- **First Thursday of Every Month – Steering Committee Meeting**
- **June 13 & 14 – Garden Tour!**
- **June 18<sup>th</sup> – Composting & Gardening Workshop**



Back toward the Missouri River crossing on I-70, we arrived at Les Bourgeois Vineyard in Rocheport. Once there, we enjoyed a magnificent lunch at their Blufftop Bistro Restaurant featuring salad, herb roasted chicken, tortellini, and more. They placed us in their upstairs dining room, which has glass all around, as well as an outdoor deck with outstanding

views of the river. Stuffed to the gills, we were then taken on a tour of one of the nearby vineyard fields by Mark, one of the four people who manage 27 acres of vines. He taught us a lot about how the vines are cared for and pruned for maximum grape production. We also learned that the grapes are harvested by machines! One that shakes the high guide wires and another with a conveyor belt that picks up the grapes. So much for our romantic notions of harvesting grapes by hand and carrying the baskets through the fields!!!

We were then treated to a wine-tasting session where we got to sample a wide variety of their wines, from the very dry to very sweet ones that almost tasted like liquid grape jelly! Many of us made purchases of these Missouri grown wines to take home with us along with souvenir wine glasses to commemorate our visit. It was a very merry group of Master Gardeners who re-boarded the bus for home. With lots of plants in the cargo bay, and bottles of locally grown wine in our



laps, what more could a Master Gardener hope for? By the way, my bottle of Vignoles-Traminette along with some nice cheese was consumed in my garden the very next weekend with my gardening buddy, Rene. Now that's gardening!!!

Thanks so much to **Sandy Heimann** and the extension office staff for organizing this wonderful trip!

## The Garden Tour Needs YOU!

*Article and Spreadsheet by Sherry Adams, Master Gardener and Ace Reporter*

We are still in need of a few more volunteers to work at the 2008 Garden Tour. **In this issue you will see the current volunteer roster and where we still need help.** If you are interested in any of the openings, please contact the Garden Captain for your garden of interest using the contact information provided.

Remember that the garden tour is the only fund-raiser for our program, so participation by all Master Gardeners is required. It also counts toward your Core Hours requirement. (And it's always fun, too!) You may choose to work in a garden on one of the tour dates – Friday, June 13th and Saturday, June 14th (shifts are half-day).

The theme for our tour this year is “Mastering the Art of Gardening” and for the first time ever all of the gardens belong to our own Master Gardeners. There are six gardens in the northland including locations in Briarcliff, Kansas City, Liberty,

## HOTLINE FAQ

The West Central Region Horticulture staff has recently decided to begin a small column in the Kansas City Star and even in smaller newspapers around the area. This will help to increase our visibility to the public about what we're here to do.

Every week, we want to submit a column that addresses current issues/hot topics /interesting questions that Master Gardener Hotline volunteers have observed. When you identify an appropriate question, we simply ask that you spend a few minutes to put together a clear and concise response to that question in Microsoft Word. At the Blue Springs Hotline desk, we have a “Hotline FAQ” file saved on the computer desktop. With your help, we can increase the number of people we impact and subsequently increase the public's awareness of our Master Gardener program. The next time you are at the Hotline, please take a few minutes to look over your ½ yellow sheets and take part in this new adventure.

Kearney, and points west of Kearney.

Thanks so much and we look forward to seeing all of you at the tour! -- 2008 Garden Tour Co-Chairs: **Sue Waltemath, Sherry Bowers, & Sherry Adams**

## Osher Lifelong Learning – Summertime Gardening Potpourri

*By Molly Fusselman, Horticulture Educator*

Osher Lifelong Learning Institute is once again hosting a Summertime Gardening Potpourri course this summer. The classes are **June 10, 17 and 24, and July 8 from 9:30 a.m. to 11 a.m.** The Jackson County Extension office in Blue Springs will be offering this course through ITV. We need a minimum of five MGs and a maximum of 15 to offer the course. First come/first serve. **The fee is \$15.00.** Please reply to Molly Fusselman if you are interested in this wonderful continuing education opportunity.

### Summertime Gardening Potpourri

Will this flower bloom in the shade? Will this plant wilt in our Missouri heat? Can wildflowers really work in my landscape? If you have ever wondered about such questions, then this is the course for you! Students will be guided through plant selection, including flowers, shrubs and native wildflowers.

- June 10: Shade Gardening
- June 17: Attracting Birds, Bees and Butterflies
- June 24: Cool Plants That Don't Melt During Missouri's Heat
- July 8: Using Natives in the Garden
- \*Class will not meet July 1<sup>st</sup>

Mary Kroening, MU Extension horticulture specialist and state Master Gardener coordinator, will be teaching the course. You will receive 6 hours of continuing education for this course.

## Plants Still Needed for Garden Tour

*By Sandy Heimann, Master Gardener*

The Plant Sale is just a few days away! If you haven't divided and potted up those perennials, now is a great time to do so. Customers look for "large and healthy" plants as the sale rather than the ones that are newly transplanted. Don't forget those water garden plants as well! Remember to identify your plants. Common name, botanical name (if you know it), plant needs, (ie: sun, shade), color, water needs, perennial, annual, etc. The more information we can give to the customers the better.

Also, this year, each garden will be featuring their "Top Ten Favorite" plants. These plants are listed on the website at: [Extension.missouri.edu/gkcmg/](http://Extension.missouri.edu/gkcmg/) Check them out! It's an interesting list.

### Plant Drop Off Sites

Plants may be dropped off at the Plant Sale location: 16609 Quinn Road, Smithville, on Wednesday, June 11 and 12. We will be there between 9 a.m. and 6 p.m. If you need to make any special arrangements to deliver your plants, please contact **Sandy Heimann** 816-779-6407 or **Sherry Adams** 816-532-3981. Additional Drop off Sites One Week Prior to Sale: For those of you that have plants but cannot get them to the sale site, we have three drop off sites. Plants will be accepted starting June 4 through June 11 at the locations listed on the following page. Please call ahead.

## EATING FROM THE GARDEN

The Nutrition Garden Volunteer Training is now complete. The following Master Gardeners are Nutrition Garden Volunteers: **Carolyn Lidge, Don Bjuland, Robbie Meyer, Martha Frasher, and Kristin Middleton.** Thank you everybody! We are very excited to have you a part of this great program!

For those of you who still wish to be a part of the Eating from the Garden program, it's not too late! We are providing another training this fall. The dates are August 21<sup>st</sup>, 28<sup>th</sup>, September 4<sup>th</sup>, 11<sup>th</sup>, 18<sup>th</sup>, and 25<sup>th</sup>. The 6-week course is every Thursday from 9 a.m. – 2 p.m.

If you would like more information about the Eating from the Garden program or wish to join the training this fall, please call Molly Fusselman at (816) 252-5051 or [fusselmanm@msn.com](mailto:fusselmanm@msn.com) to fill out an application.

**Teresa Kester**

7305 N. Myrtle Ave.  
Gladstone, MO 64119  
Ph. 816-468-9018

**Caroline Arnold**

416 W. 88 St.  
Kansas City, MO 64114  
Ph. 816- 333-6059

**Sandy Heimann**

13104 E. 264 St.  
Peculiar, MO 64078  
Ph. 816-779-6407

**Garden Art Needed**

Have you been busy churning out the garden art? It's not too late! Not able to make any? Purchased garden art will be gladly accepted as well. Bird Feeders, stepping stones, gazing balls, bird baths, signs, ornamental bricks, garden markers, hypertufa, leaf prints, mosaics.. ... just to name a few. Let's show off our great talent as well as show everyone how easy it is to embellish their garden. Questions? Contact **Sandy Heimann** 816-779-6407

**Volunteers Needed for the Plant Sale**

I still have a few slots left for the Plant Sale. This is a fun event and an easy way to get in those hours! If you are interested in helping out, please contact **Sandy Heimann** at 816-779-6407 or email me at [glensam@grapevine.net](mailto:glensam@grapevine.net)

**New Class Interviews**

If you are interested in conducting interviews for the 2008 Level 1 Training, please contact **Sandy Heimann** at [glensam@grapevine.net](mailto:glensam@grapevine.net) or call at 816-779-6407. The interviews will take place the week of June 23-27. These are four-hour shifts, at the Blue Springs office. You will have a chance to review each applicant ahead as well as receive a list of interview questions. This is a great way to get in those hours as well as meet the potential new class!



**WORKSHOP  
ANNOUNCEMENT**

**Kansas City Community  
Gardening and  
Composting Workshop**

Lincoln University Cooperative Extension (LUCE) in collaboration with the University of Missouri Ext. (UME) will offer a one-day workshop on "Community Gardening and Composting" on Wednesday June 18, 2008, at the Kansas City Community Gardens located at 6917 Kensington, Kansas City, MO 64132, beginning at 9:30 am. Extension Specialists will share ideas on starting and organizing a community garden, growing gardens sustainably, choosing native plants to assure pollination, and making composts from garden and other wastes. Both lectures and hands-on demonstrations will be included. The event is free and a light lunch will be provided; however, registration is needed in order to ensure you have a lunch. Please register by contacting Tina Wurth [wurtht@lincolnu.edu](mailto:wurtht@lincolnu.edu); phone 816-923-0042), or Sanjun Gu ([sanjun.gu@lincolnu.edu](mailto:sanjun.gu@lincolnu.edu); phone 573-681-5524) before June 13, 2008.



**2009 International Master Gardener  
Conference  
Viva, Las Vegas!**

The theme of the 2009 International Master Gardener Conference is "New Frontiers" in horticulture and gardening. It will be held March 22-26, 2009.

The Las Vegas International Master Gardener Conference will address issues that gardeners everywhere face -- water conservation, proper plant selection, soil enrichment, pest control -- while also presenting new concepts in environmental stewardship and "green" technologies. Since what is old has become new again, we will also explore historical and traditional plants and methods.

The Las Vegas Master Gardeners are eager to show you around their majestic Mojave city. For additional early info go to [www.unce.unr.edu/imgc](http://www.unce.unr.edu/imgc)



## Master Gardener Horticulture Study Tour to Costa Rica

February 1-10, 2009

As Bruce Beck said so well when we returned from our first Costa Rica study tour in 2001 “What could be more appropriate for Master Gardeners than to visit a country that is one big garden?” Join fellow gardeners on an exciting tour of the exotic and beautiful gardens and sights of Costa Rica. This trip will leave the typical tourist route and visit private gardens, agricultural production locations, and various native habitats from cloud forest to tropical rainforest to tropical Pacific coast. Some highlights include a several night stay at the famous Wilson Botanical Garden (<http://www.ots.duke.edu/en/lascruces/>) and an exclusive tour of the private garden and orchid collection of Ms. Ileana Teran, the president of SACRO (Saving Costa Rica’s Orchids), an organization committed to preserving natural habitats where orchids grow wild. For those of you who like birds, animals butterflies and sea creatures this trip will provide an excellent opportunity to keep the binoculars and camera extremely busy.

A Master Gardener Study Tour is a fabulous experience shared with fellow gardeners (Tour Participants). Not only will you see, smell, feel and taste the marvels of nature and horticulture, but you will learn about them. And you will learn about this wonderful country from an educated, experienced and passionate native tour guide. The tour leaders, an Extension agronomist and his Master Gardener wife, will see that you bring home lessons that will make you a better gardener and volunteer back home.

In addition to being a country blessed with a diversity of plants and animals – native and cultivated, Costa Ricans (who call themselves “Ticos”, an endearing diminutive term) are especially friendly. Tourists are welcome. English is the second language, but their Spanish language and unique Central American culture is rich and delightful. Costa Rica has no army. It is a safer, more educated and more prosperous country for it. And the weather is wonderful, with daytime highs varying from low 70’s to mid 80’s. Could there be a better way to escape our winter blues than with a tropical plant based vacation?!

This tour will introduce you to one of the most diverse natural areas of the world and to a rich and diversified agricultural/horticultural economy. You will understand how we, too, are intertwined in the global economy and ecosystem.

Costa Rica raises most of its own food – fruits, vegetables, poultry, fish and dairy. The country exports coffee, pineapples, bananas, sugar, beef cattle, fine timber, flower seeds, and landscape and indoor plants. Tour participants will see the production and marketing of some of these commodities.

Participants will also see an incredible number of other familiar and exotic tropical fruits, nuts, spices, medicinals and timber species – citrus, mango, papaya, guava, plantains, durian, breadfruit, oil palm, cashew, Brazil nuts, cacao, cinnamon, vanilla, coca, quinine, mahogany, strangler figs, orchids, bromeliads, heliconias, crotons, philodendron and many more.

The diversity of fauna matches the diversity of flora. Birds you might see include the resplendent quetzal, numerous hummingbird species, toucans, parrots, macaws, oropendulas, motmots and jacanas. Spider and howler monkeys, sloths, coatimundis, fruit-eating bats, iguanas, leaf cutting ants, aerial termite, and dazzling morpho butterflies are among the many animal species you should see and hear.

The group will travel by air-conditioned tourist bus with panoramic windows. Meals and evening accommodations (<http://www.hb.co.cr/>, [www.savegre.co.cr](http://www.savegre.co.cr/), [www.lacusingalodge.com](http://www.lacusingalodge.com), [www.hotelgranodeoro.com](http://www.hotelgranodeoro.com)) will be first class. There will be time to relax at locations with gardens, scenic views, ocean breezes, pools and beaches.

Persons who are not Master Gardeners are welcome, too. In past years they have enjoyed these tours as much as the Master Gardener volunteers. The tour will accommodate up to eighteen persons. Go to the Missouri Master Gardener home page <http://mg.missouri.edu> for details of the tour, terms and costs and registration.

Costa Rica is "pura vida" (pure pleasure). Don't pass up this opportunity.

## "Green Acres" - Conservation Management on 3 to 30 Acres Burr Oak Woods Nature Center – July 23, 6:30 - 8:30

by Charles Conner, Urban Forester

So you've moved to the country to get away from it all. Now what? What can you do with your small parcel besides mow and mow and mow? Urban Forester Chuck Conner and Wildlife Management Biologist Rick Bredesen will provide information on caring for your land. Topics covered will include:

- Attracting wildlife to your acreage
- Tree and shrub planting for landscaping and wildlife value
- Identification and control of common invasive species
- Woodland management

Course is free, but must register by July 16. Register by calling 816/228-3766.

## Catch the Container Craze with Grow Native!

By Tammy Bruckerhoff, Grow Native! MDA

Don't let lack of yard space keep you from having a native plant garden. Collect a container or two or three and Catch the Container Craze! Then show off your small garden in a big way by entering the **Grow Native! Container Garden Contest**. It's easy. Send your name, address, e-mail address, telephone number and photos of your native plant container garden (taken throughout the growing season—no more than three) to Grow Native! P.O. Box 630, Jefferson City, MO 65102. Or enter electronically by sending the same information to [grownative@mda.mo.gov](mailto:grownative@mda.mo.gov).



Also include a list of native plants used in the container and their source (retail garden center, neighbor, specialty shop, wherever). All entries must be postmarked by Wednesday, October 15, 2008.

Three winners will be selected. Each winner will receive a bundle of prizes that include: \$100 gift certificate for use at a Grow Native! retail garden center (provided by *Kansas City Gardener* and *The Gateway Gardener*), copies of *Tried and True: Missouri Native Plants for Your Yard*, *Seedling ID Guide for Native Prairie Plants* and *Native Landscaping for Wildlife and People*, a Grow Native! gardening wardrobe (hat, apron, t-shirt and vest), four free admissions to Powell Gardens or Shaw Nature Reserve and a profile of you and your container garden in *The Kansas City Gardener* or *The Gateway Gardener* and on the Grow Native! website.

Containers will be judged on visual appeal, length of bloom time and native plant selection (color combinations, textures, heights).

### Ideas to get you started:

For a sunny area, consider creating a Prairie Pot that features native warm season grasses combined with sun-loving forbs such as rose verbena (*Glandularia canadensis*) or prairie blazing star (*Liatris pycnostachya*). To create a Patio Nature Center, consider native plants that attract butterflies such as butterfly milkweed (*Asclepias tuberosa*). For a moveable arbor, consider native vines such as passion flower (*Passiflora incarnata*) and include a trellis.

## TREE KEEPERS

### Volunteer Training for a Healthy Community Forest

This class is chock-full of great info, everything from tree identification and species selection to urban soils, planting, pruning and diagnosing tree problems. In addition to the six evening sessions, there are two Saturday field sessions for hands-on learning. Attendance is required at each session; opportunities to make up sessions will be available. Participants are asked to volunteer a total of 24 hours with Heartland Tree Alliance to help care for young trees on public property in the Kansas City region. Evening sessions: Tuesdays, June 3, 10, 17, and 24 and July 1 and 8 from 6:30 to 8:30 PM. Saturday sessions: June 14 and 28, 9:00 AM to 12:00 PM. Classes will be held at Missouri Department of Conservation's Anita B. Gorman Conservation and Discovery Center. To register, call Angela Schreffler at 816-561-1061 ext. 110 or [treemail@bridgingthegap.org](mailto:treemail@bridgingthegap.org). There is a \$25 registration and textbook/materials fee due before the first day of class.

**Tips for success:**

- To determine the shape and/or size of the container, know the size and shape of the root system of the plant you will be placing in it.
- Large containers stay moist longer and are less subject to fluctuating temperatures.
- Good drainage is important. If your container lacks adequate drainage, add extra holes.
- Water judiciously. Soil should be nearly dry before you add water. When you water, apply to soil, rather than leaves.

For more information about the contest, contact Grow Native! at 573-522-4170 or [grownative@mda.mo.gov](mailto:grownative@mda.mo.gov) and click on Workshops & Events. Grow Native! is a joint program of the Missouri Department of Conservation and Missouri Department of Agriculture. The contest is co-sponsored by Grow Native!, Shaw Nature Reserve, Powell Gardens, The Gateway Gardener and The Kansas City Gardener.

### An Urban Prairie Rain Garden

*By Tom Hand, Master Gardener*



After 18 months of planning a rain garden in Loose Park, it finally “came to the planting” on May 10, 2008. John Quick, the president of the Rose Society, saw the need for diverting heavy rainfall from the Laura Conyers Rose Garden. John came to the Master Gardeners through MG contacts with the Rose Society. He asked if MGs were interested in planting the rain garden and then doing regular

maintenance. The Steering Committee approved the project and our MG participation began. I put together a list of MGs from the urban area to find interest in this project. They were kept apprised of the progress of the rain gardens through email contacts.

The rain garden plan was commissioned by the Rose Society with Opperman Landdesign, LLC. The plan was for a 400 square foot garden with 7 varieties of plants. The plans were approved by a variety of agencies involved with Loose Park. The excavation was scheduled for late April. The date of May 10 was selected to have a rain garden seminar and the actual planting. I received offers from about 12 MGs that offered their help in this endeavor.



The day arrived and at 8 a.m. John Quick, John Martin (Rose Society & Johnson County MG member) and I met the truck bringing the plants. We immediately got started with getting the plants to the site. At 10 a.m. the rain garden seminar started with about 20 participants. Carolyn Lidge, who presented the session, said that there

### DO YOU KNOW THE WAY TO ... MENDOCINO?

The California State Master Gardener coordinator is teaming up with Minnesota Master Gardeners to offer a garden tour to Mendocino, California in October during the fall colors. Mendocino is on the Pacific Ocean in the heart of wineries and majestic coastal redwoods. It is a Mediterranean climate where it rarely frosts, therefore rich in fuschia, proteus, and succulents galore. This tour will include private gardens, a coastal botanic garden, several nurseries including the famous Hortus Botanicus, as well as redwoods and wineries. This area is known to have the tallest coastal redwoods in the world. The lodging base for this tour will be Glendeven Inn, [www.glendeven.com](http://www.glendeven.com)

If anyone is interested in the details of this trip, please email or call me and I will forward the brochure and details. Mary K. Kroening Horticulture Specialist Division of Plant Sciences 1-31 Agriculture Building University of Missouri Columbia, Missouri 65211 573-882-9633

[kroeningm@missouri.edu](mailto:kroeningm@missouri.edu)

was a lot of interest and questions. A number of the participants came out to the site to observe and ask questions. **Suzanne Minner**, the first of the MGs to arrive, immediately commenced planting.

The plants consisted of 16 low-grow sumac, 8 blue false indigo, 68 little bluestem, 10 feather reed grass, 29 Indian grass, 10 showy stonecrop and 26 Missouri evening primrose. Pete Opperman, Landscape Architect, and John Martin provided a large impact on our progress. After the planting was complete, there was a bucket brigade to lay down the mulch. This was quite a sight and a prime example of teamwork.

My thanks to all that participated, the MGs, Bridging the Gap, Rose Society, Parks & Rec, Judy Penner and others that I'm sure I missed. A great project, great fun and great cause.

### Master Gardener Steering Committee Meeting May, 2008

The Master Gardener Steering Committee had a Strategic Planning Workshop instead of a STC meeting for May. There are no May STC minutes. Check back in next month's issue for the regular STC minutes.

### The Hot Spot

*By Carolyn Lidge, Master Gardener and Committee Co-Chair*



*Once upon a time* ... there was a six member Hotline Committee that had several concerns, with the main one being the absence of Emeritus participation. The Committee, among themselves had often wondered why Master Gardeners just seem to drop out of sight once they reach that 10<sup>th</sup> year pentacle. As a member of that committee, I feel that all Emeritus members need to understand that their support is still needed and will be appreciated ... especially on the Hotline. We've all wondered why Emeritus members would allow all that wonderful knowledge and undeniable expertise to go to waste? We are left wondering if you will opt to get back in the swing of things and at least get acquainted with the vast number of new volunteers who entered the program after you reached that 10<sup>th</sup> year "retirement"? At this time, all of us are extending an invitation to all Emeritus level Master Gardeners to please think about getting re-involved. How about it? We, along with all the other Master Gardeners would love to have you around again so we can all live happily ever after.

*The End*

Another issue I would like to address is the absence of volunteer hours not being reported. What seems like just another oversight to some is actually the difference between first and second place at the end of the year. For the past "forever years" St. Louis has always held the number one spot and we have always dragged in at number two. OUCH! Once in a while is understandable to come in second place, but "always" hurts a bit. So will you please take a little extra time to record and try your best to get your hours reported. St. Louis is not better than we are, the difference is that they take the time to report all of their volunteer time and we don't. For that 70% of you who did take the time, you are graciously appreciated. For that 30% that missed last year's deadline please take the time to do so this upcoming year. If you have problems or concerns that are keeping you from doing so, feel free to ask any perennials or your mentor for assistance. Many thanks in advance.

Your Hotline Committee: **Pat Ferrall, Carolyn Lidge, Janice Georg, Fred Deckman, and Margaret Reichart.**

### DIRECTORY CHANGES

K Schrock:  
Kristine Schrock  
7660 N. Everton  
Kansas City, MO 64152  
e-mail:  
[kkschrock@hotmail.com](mailto:kkschrock@hotmail.com)

**DON'T FORGET TO  
LOG & TURN IN  
YOUR HOURS FOR  
THE GARDEN TOUR!**



<b>BSG-MON (2)</b> 9:00 – 12:00 <b>A</b> Marsha Frasher (8) 331-8185 <b>P</b> Carolyn Lidge (8) 966-1861 12:00 - 3:00 <b>A</b> Marsha Frasher (8) 331-8185 <b>P</b> Carolyn Lidge (8) 966-1861	<b>NKC-TUE (3)</b> 9:00 – 12:00 <b>A</b> <b>P</b> Peg Creeden (8) 781-5344 12:00 - 3:00 <b>A</b> <b>P</b> Peggy Mosbacher (8) 781-9491	<b>BSG-WED (4)</b> 9:00 – 12:00 <b>A</b> Marie Pawsat (8) 333-6599 <b>P</b> Marsha Frasher (8) 331-8185 12:00 - 3:00 <b>A</b> Marie Pawsat (8) 333-6599 <b>P</b> Marsha Frasher (8) 331-8185	<b>NKC-THU (5)</b> 9:00 – 12:00 <b>A</b> <b>P</b> Peggy Mosbacher (8) 781-9491 12:00 - 3:00 <b>A</b> <b>P</b>	<b>BSG-FRI (6)</b> 9:00 – 12:00 <b>A</b> Marie Pawsat (8) 333-6599 <b>P</b> Patty Bond (8) 582-8161 12:00 - 3:00 <b>A</b> Marie Pawsat (8) 333-6599 <b>P</b>
9:00 – 12:00 (9) <b>A</b> Jim Green (8) 796-6329 <b>P</b> 12:00 - 3:00 <b>A</b> Karen Kunz (8) 554-6265 <b>P</b>	9:00 – 12:00 (10) <b>A</b> <b>P</b> Peggy Mosbacher (8) 781-9491 12:00 - 3:00 <b>A</b> <b>P</b>	9:00 – 12:00 (11) <b>A</b> Jim Green (8) 796-6329 <b>P</b> Carolyn Lidge (8) 966-1861 12:00 - 3:00 <b>A</b> <b>P</b> Carolyn Lidge (8) 966-1861	9:00 – 12:00 (12) <b>A</b> <b>P</b> 12:00 - 3:00 <b>A</b> <b>P</b>	9:00 – 12:00 (13) <b>A</b> Carolyn Lidge (8) 966-1861 <b>P</b> Patty Bond (8) 582-8161 12:00 - 3:00 <b>A</b> Paula Cosentino (8) 697-3597 <b>P</b> Carolyn Lidge (8) 966-1861
9:00 – 12:00 (16) <b>A</b> Jay Goodman (8) 218-7139 <b>P</b> Carolyn Lidge (8) 966-1861 12:00 - 3:00 <b>A</b> Jay Goodman (8) 218-7139 <b>P</b> Carolyn Lidge (8) 966-1861	9:00 – 12:00 (17) <b>A</b> <b>P</b> Peggy Mosbacher (8) 781-9491 12:00 - 3:00 <b>A</b> <b>P</b>	9:00 – 12:00 (18) <b>A</b> Jim Green (8) 796-6329 <b>P</b> Bob Parkey (8) 650-6260 12:00 - 3:00 <b>A</b> <b>P</b> Bob Parkey (8) 650-6260	9:00 – 12:00 (19) <b>A</b> <b>P</b> 12:00 - 3:00 <b>A</b> <b>P</b>	9:00 – 12:00 (20) <b>A</b> Jim Green (8) 796-6329 <b>P</b> Patty Bond (8) 582-8161 12:00 - 3:00 <b>A</b> Karen Kunz (8) 554-6265 <b>P</b>
9:00 – 12:00 (23) <b>A</b> Carolyn Chambers (8) 229-2671 <b>P</b> Mary Medley (8) 257-4767 12:00 - 3:00 <b>A</b> <b>P</b>	9:00 – 12:00 (24) <b>A</b> <b>P</b> 12:00 - 3:00 <b>A</b> <b>P</b>	9:00 – 12:00 (25) <b>A</b> Jim Green (8) 796-6329 <b>P</b> 12:00 - 3:00 <b>A</b> Karen Kunz (8) 554-6265 <b>P</b>	9:00 – 12:00 (26) <b>A</b> <b>P</b> 12:00 - 3:00 <b>A</b> <b>P</b>	9:00 – 12:00 (27) <b>A</b> Carolyn Lidge (8) 966-1861 <b>P</b> Patty Bond (8) 582-8161 12:00 - 3:00 <b>A</b> Jim Green (8) 796-6329 <b>P</b> Carolyn Lidge (8) 966-1861
9:00 – 12:00 (30) <b>A</b> Paula Cosentino (8) 697-3597 <b>P</b> Carolyn Lidge (8) 966-1861 12:00 - 3:00 <b>A</b> Paula Cosentino (8) 697-3597 <b>P</b> Carolyn Lidge (8) 966-1861	<p style="text-align: center;">Tuesdays and Thursdays are done North of the River</p> <p style="text-align: center;">Monday, Weds and Fridays are done in Blue Springs.</p>	<h1>JUNE HOTLINE CALENDAR</h1>	<b>HOTLINE SUBS</b> Gwen Wheeler <a href="mailto:gmwheeler@juno.com">gmwheeler@juno.com</a> (8)-228-9308 (8)-213-0598 (cell)	<b>HOTLINE SUBS</b> <b>Janice George</b> (8) 350-1972 <a href="mailto:jmgeorg@earthlink.net">jmgeorg@earthlink.net</a> <b>Pat Glover</b> (8) 220-8379 <b>Jim Green</b> (8) 796-6329

Your name will not appear on this calendar if you scheduled after the 20<sup>th</sup>

<b>BSG-MON</b> <b>JULY</b> <b>HOTLINE</b> <b>CALENDAR</b>	<b>NKC-TUE (1)</b> <b>9:00 – 12:00</b> <b>A Carolyn Lidge</b> <b>(8) 966-1861</b> <b>P Peg Creeden</b> <b>(8) 781-5344</b> <b>12:00 - 3:00</b> <b>A</b> <b>P Carolyn Lidge</b> <b>(8) 966-1861</b>	<b>BSG-WED (2)</b> <b>9:00 – 12:00</b> <b>A Teresa Triplett</b> <b>(8) 997-5161</b> <b>P Carolyn Lidge</b> <b>(8) 966-1861</b> <b>12:00 - 3:00</b> <b>A Teresa Triplett</b> <b>(8) 997-5161</b> <b>P Carolyn Lidge</b> <b>(8) 966-1861</b>	<b>NKC-THU (3)</b> <b>9:00 – 12:00</b> <b>A</b> <b>P Teri James</b> <b>(8) 455-1937</b> <b>12:00 - 3:00</b> <b>A</b> <b>P</b>	<b>OFFICE</b> <b>CLOSED</b> <b>INDEPEN</b> <b>DENCE</b> <b>DAY!</b>
<b>9:00 – 12:00 (7)</b> <b>A Shari Paulsell</b> <b>(8)-578-5653</b> <b>P Mona Marsh</b> <b>(8) (941-9053)</b> <b>12:00 - 3:00</b> <b>A Shari Paulsell</b> <b>(8)-578-5653</b> <b>P Mona Marsh</b> <b>(8) (941-9053)</b>	<b>9:00 – 12:00 (8)</b> <b>A</b> <b>P</b> <b>12:00 - 3:00</b> <b>A</b> <b>P</b>	<b>9:00 – 12:00 (9)</b> <b>A</b> <b>P Carolyn Lidge</b> <b>(8) 966-1861</b> <b>12:00 - 3:00</b> <b>A Karen Kunz</b> <b>(8) 554-6265</b> <b>P Carolyn Lidge</b> <b>(8) 966-1861</b>	<b>9:00 – 12:00 (10)</b> <b>A</b> <b>P</b> <b>12:00 - 3:00</b> <b>A</b> <b>P</b>	<b>9:00 – 12:00 (11)</b> <b>A</b> <b>P Patty Bond</b> <b>(8) 582-8161</b> <b>12:00 - 3:00</b> <b>A</b> <b>P</b>
<b>9:00 – 12:00 (14)</b> <b>A</b> <b>P</b> <b>12:00 - 3:00</b> <b>A</b> <b>P</b>	<b>9:00 – 12:00 (15)</b> <b>A</b> <b>P</b> <b>12:00 - 3:00</b> <b>A</b> <b>P</b>	<b>9:00 – 12:00 (16)</b> <b>A</b> <b>P Mona Marsh</b> <b>(8) (941-9053)</b> <b>12:00 - 3:00</b> <b>A</b> <b>P Mona Marsh</b> <b>(8) (941-9053)</b>	<b>9:00 – 12:00 (17)</b> <b>A Karen Conley</b> <b>(8) 333.8979</b> <b>P Mary McClure</b> <b>(8) 561.2213</b> <b>12:00 - 3:00</b> <b>A</b> <b>P</b>	<b>9:00 – 12:00 (18)</b> <b>A Carolyn Lidge</b> <b>(8) 966-1861</b> <b>P Patty Bond</b> <b>(8) 582-8161</b> <b>12:00 - 3:00</b> <b>A</b> <b>P Carolyn Lidge</b> <b>(8) 966-1861</b>
<b>9:00 – 12:00 (21)</b> <b>A Ninah Butler</b> <b>(8) 820-3299</b> <b>P</b> <b>12:00 - 3:00</b> <b>A</b> <b>P</b>	<b>9:00 – 12:00 (22)</b> <b>A</b> <b>P</b> <b>12:00 - 3:00</b> <b>A</b> <b>P Maggie Basch</b> <b>(8) 891-6760</b>	<b>9:00 – 12:00 (23)</b> <b>A</b> <b>P</b> <b>12:00 - 3:00</b> <b>A Karen Kunz</b> <b>(8) 554-6265</b> <b>P</b>	<b>9:00 – 12:00 (24)</b> <b>A</b> <b>P</b> <b>12:00 - 3:00</b> <b>A</b> <b>P</b>	<b>9:00 – 12:00 (25)</b> <b>A Carolyn Lidge</b> <b>(8) 966-1861</b> <b>P Patty Bond</b> <b>(8) 582-8161</b> <b>12:00 - 3:00</b> <b>A</b> <b>P Carolyn Lidge</b> <b>(8) 966-1861</b>
<b>9:00 – 12:00 (28)</b> <b>A</b> <b>P</b> <b>12:00 - 3:00</b> <b>A</b> <b>P</b>	<b>9:00 – 12:00 (29)</b> <b>A</b> <b>P Sheryl Stephens</b> <b>(8) 781-0365</b> <b>12:00 - 3:00</b> <b>A</b> <b>P Sheryl Stephens</b> <b>(8) 781-0365</b>	<b>9:00 – 12:00 (30)</b> <b>A</b> <b>P Carolyn Lidge</b> <b>(8) 966-1861</b> <b>12:00 - 3:00</b> <b>A Robbie Meyer</b> <b>(8) 524-8757.</b> <b>P Carolyn Lidge</b> <b>(8) 966-1861</b>	<b>9:00 – 12:00 (31)</b> <b>A</b> <b>P Sheryl Stephens</b> <b>(8) 781-0365</b> <b>12:00 - 3:00</b> <b>A</b> <b>P</b>	<b>HOTLINE SUBS</b> <b>Janice George</b> <b>(8) 350-1972</b> <b>Gwen Wheeler</b> <a href="mailto:gmwheeler@juno.com">gmwheeler@juno.com</a> (8)-228-9308 <b>(8)-213-0598 (c)</b> <b>Pat Glover</b> <b>(8) 220-8379</b> <b>Jim Green</b> <b>(8) 796-6329</b>

Your name will not appear on this calendar if you scheduled after the 20<sup>th</sup>





# GARDEN TOUR VOLUNTEER SCHEDULE

Garden Owner	Garden Captains	Friday 8:45am-1pm	Friday 12:45-4:45pm	Saturday 8:45am-1pm	Saturday 12:45-4:45pm	Help before tour
Gisela Pursel (Stop 1)	Suzanne Minner Kathy Hoggard	Marjorie Yates Bob Halford	Margaret Reichart Kathy Vedder	Bob Halford Bob Bonack	Tina Wurth Beth Flemington	Gwen Wheeler
Briarcliff	Contact <b>Kathy</b> at  (816) 523-5994 or <a href="mailto:katherinehoggard@sbcglobal.net">katherinehoggard@sbcglobal.net</a>	Margaret Anne Schmitt Jane Childress John Parks	Cynthia Smith Margaret Anne Schmitt Carol Rauscher	Arlyn Silvey Carol Rauscher Tina Wurth	Carol Hon Bob Hon Carol Wheeler	
		Pet Maniquis Elaine Scatizzi	Pet Maniquis Elaine Scatizzi	Connie Jordan Susan Smoyer	Melissa Windju Irma Schmidt	
Jill Moore (Stop 2)	Beth Houlihan (816) 436-1862 or <a href="mailto:jhoulihan@kc.rr.com">jhoulihan@kc.rr.com</a>	Peggy Mosbacher Teresa Kester Betsy Conrad	<b>OPEN</b> Bob Bonack Linda Powell	Margaret Reichart Becki Bardin Marie Robinson	Cindy Maxwell Debbie Waggener Dena Porterfield	Peggy Mosbacher Teresa Kester Teri James
		Kelly Vandendaele	Teri James	Linda Roberts	Beth Houlihan	
Chris Veach (Stop 3)	Rhonda Rodgers (816) 781-8250 or <a href="mailto:rhondarodgers@sbcglobal.net">rhondarodgers@sbcglobal.net</a>	Jean Brookens Deb Montagna Anita Nelson	Deb Montagna Anita Nelson Gretchen Lathrop	Deb Montagna Tracey Larsen Pat Miller	Deb Montagna Vicky Kent Gretchen Lathrop	Ninah Butler Sara Scheil
Liberty	<a href="mailto:rhondarodgers@sbcglobal.net">rhondarodgers@sbcglobal.net</a>	Anita Nelson Kristin Middleton	Gretchen Lathrop Roberta Minor	Pat Miller Jane Skinner	Gretchen Lathrop Bob Bonack	
Jeannie Critten (Stop 4)	Connie Carder Margaret Basch	John Rossbach Becki Bardin	Carolyn Arnold Deanna Starr	Stacey Fortin Toni Willet	Kathryn Pelzman Toni Willet	Bryan Woodring Peg Creeden
Kearney	contact <b>Margaret</b> at (816) 891-6760 or <a href="mailto:tmbasch47@kc.rr.com">tmbasch47@kc.rr.com</a>	Kathryn Pelzmann	Wilma Fletcher	Mary Ellen Myers	Brenda Carpenter	John Parks Kathryn Pelzman
Richard Rice (Stop 5)	Mary Medley (816) 257-4767 or <a href="mailto:bmedley313@sbcglobal.net">bmedley313@sbcglobal.net</a>	Barb Kauzlarich Gala Engleman Marsha Moseley	Barbara Hutton <b>OPEN</b> Michael Horton	Teresa Kester Margaret Anne Schmitt Diane Whittaker	Margaret Anne Schmitt Marilyn Patterson Mary Ellen Myers	Kim Dyer
W. of Kearney	<a href="mailto:bmedley313@sbcglobal.net">bmedley313@sbcglobal.net</a>	Mary Ethington Rene Hetrick Bob Bonack	Pat Glover Marvin Nuemberger Bryan Woodring	Carol Huhs Mary Biber Susan Robel	Becky Peck <b>OPEN</b> <b>OPEN</b>	
		Margaret Reichart Georgia Lou Quentin	BettyAnn Love	<b>OPEN</b>	<b>OPEN</b>	

# GARDEN TOUR VOLUNTEER SCHEDULE

Sherry Adams	Cass Sullivan	Judy Place	Bud Jones	Diane Darby	Joy Durland	Margaret Reichart
(Stop 6)	Geri Hawkins	Marsha Quinn	Robbie Meyer	Cheryl Ann Novick	Rene Hetrick	Marilyn Patterson
W. of Kearney	Contact <b>Cass</b> at	Mary McClure	Karen Kunz	Rene Hetrick	Michael Horton	Jay Goodman
	(816) 452-7822 or	Courtney Earnest	Brenda Carpenter	Cynthia Smith	Jane Skinner	Peggy Mosbacher
	<a href="mailto:jsull5@juno.com">jsull5@juno.com</a>	Marilyn Patterson	Karey Kytle	OPEN	Jay Goodman	Sue Waltemath
		Reba Adkins	Pat Wright	OPEN	Cheryl Ann Novick	
		Carmen Martinache	Roger Wright	OPEN	OPEN	
Plant Sale	Sandy Heimann	Robbie Meyer	Judy Place	Maggie Mitchell	Kathy Bark	Lynn James (W)
(at Stop 6)	(816)779-6407	Karen Kunz	Marsha Quinn	Sheryl Stephens	Margaret Reichart	Barb Kauzlarich(W)
	<a href="mailto:glensam@grapevine.net">glensam@grapevine.net</a>	Brenda Carpenter	Linda VanSickle	Mona Marsh	Marjorie Yates	Deanna Starr (W)
		Karey Kytle	Nancy Sylvester	Kathy Bark	John Rossbach	Wilma Fletcher (W)
		Peg Creeden	Mona Marsh	Pat Baxter	Caroline Arnold	Brenda Holbrook (W)
		Sara Scheil	Kristin Middleton	Barb Kauzlarich	Cynthia Smith	Mona Marsh (Th)
		Nancy Sylvester	Nancy Ewan	Carol Barth	Pat Baxter	Linda VanSickle (Th)
		Marie Pawsat	Brenda Holbrook	Pat Baxter	Carol Barth	Margaret Reichart (Th)
			Karen Conley	Laurie Duffey		Sheryl Stephens (Th)
						Peg Creeden (Th)
						Brenda Holbrook (W)
						Martha Frasher



## The Social Scene

### Enough About Us ... Let's Talk About YOU!

#### Book Signing!

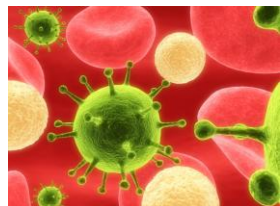
Becky Homan will be at Barnes & Noble Booksellers Country Club Plaza, 420 W 47th Street, 64112 (816-753-1313) from 1 to 4 p.m. on Friday June 13 to sign her book: "Missouri Gardener's Companion". According to Becky, it has no glamorous garden pictures, instead, there are lots of woodcuts, clever sidebars, maps and as much fun and helpful gardening information -- lots of it from Kansas City -- as she could pack into a paper-back format. It is appropriate for the new, intermediate or even advanced gardener in Missouri. And it is one of the early entries in a new state-by-state gardening series by Globe Pequot Press. The publisher even got very good book-jacket reviews for it, from the likes of P. Allen Smith (author, garden designer and NBC Today Show contributor), Peter Raven (Missouri Botanical Garden) and Eric Tschanz (Powell Gardens).

She realizes it is the first day of the Garden Tour, but hopes that you might consider stopping by on that Friday (perhaps on your way to or from north-of-the-river gardens?)!

You can contact her direct at the following:

Becky Homan  
www.beckyhoman.com  
becky.homan@sbcglobal.net  
314-852-1171 (cell)  
314-721-5377 (home)  
6046 Westminster Place  
St. Louis, Mo. 63112

#### And Now for An Apology!



Well, the inevitable has happened: I picked up a virus or worm or Trojan or WHATEVER while using the private network at the hotel I was staying at in Florida last week. No, I wasn't using it for racy pictures! I only used it for email and for directions to different attractions in the Tampa area. My virus protection was up-to-date and working properly as well. Obviously, someone had corrupted the hotel's main network page and something awful loaded onto my laptop.

My apologies to anyone who received spam email from me for computers and other garbage. I didn't know it was happening until it was too late to stop innumerable emails. Needless to say, I would never send anything like that out to any MG, or to anyone PERIOD. So, just a note about malicious spam mail: Don't ever open it! I don't send out emails with a subject line of "Hi" or "Re", for this specific reason. Any email you get from a real friend or acquaintance should have a decent subject line to alert you to the veracity of the source.

Once again, I send my apologies, and beg your forgiveness and pity as I work my way through cleaning this mess up!

*The Editor – Cheryl Ann Novick*

A Publication of the Master Gardeners of Greater Kansas City

# The Newsline



"The Newsline" is a monthly information source for the Master Gardeners of Greater Kansas City, and is provided free of charge to active members by email or by postal mail.

**Editor:** Cheryl Ann Novick  
**Reporter:** Sherry Adams  
**Photographer:** Sherry Adams

The deadline for articles to be included in this publication is the 21<sup>st</sup> day of the month preceding the publication month.

Articles and graphic elements (photos, artwork, maps, etc.) may be emailed to Cheryl Ann Novick, Editor, at [newslineeditor@hotmail.com](mailto:newslineeditor@hotmail.com) or may be hand delivered on disc or diskette to the Extension Office, labeled 'Attention: "The Newsline" Editor'.

University of Missouri Extension has updated its AA/EEO statement:

"University of Missouri Extension does not discriminate on the basis of race, color, national origin, sex, religion, age, disability, political beliefs, sexual orientation, or marital or family status in employment or in any program or activity."

The statement should be used on longer documents, such as brochures, reports and publications. The shorter version "equal opportunity/ADA institutions" should continue being used on letterhead, in newsletters and where space is limited. MU Extension's graphic standards and identity guidelines are available on the Web:

<http://extension.missouri.edu/staff/marketing/>.

If you do not work with a computer, but would still like to contribute a newsworthy piece, please send or deliver your typewritten work to the Extension Office at the following address:

"The Newsline" Editor  
Master Gardeners of Greater KC  
1501 NW Jefferson, Suite 110  
Blue Springs, MO 64015

**MASTER GARDENER NEWSLINE**

1501 NW Jefferson, Suite 110  
Blue Springs, MO 64015  
816-252-5051



*Lakumar*

Lala Kumar  
Horticulture Specialist