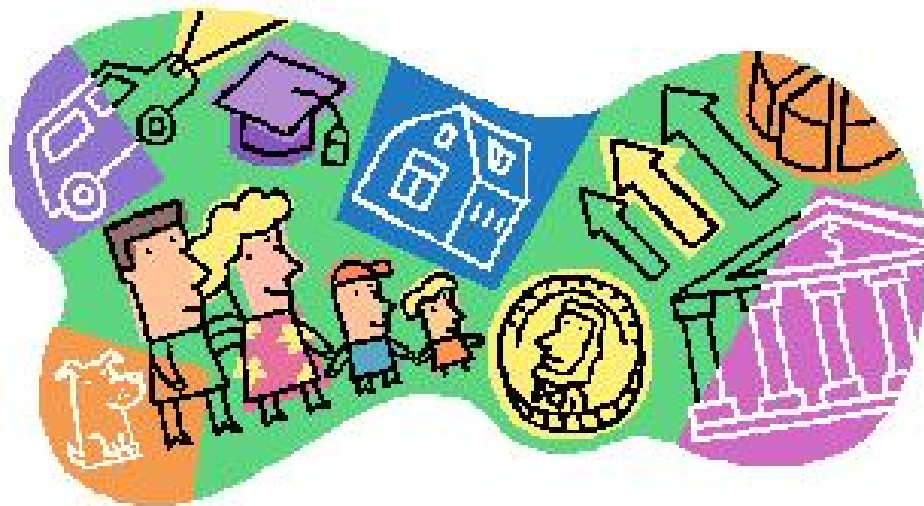


Franklin County Service Providers



The Network of Helping Others

Directory

2006

<http://extension.missouri.edu/franklin/ServiceProviders/>

Welcome to the 2006 Franklin County Service Providers Directory.

Each member of our network had the opportunity to be involved in the creation of this directory by entering information into the free statewide online database, Community Connection (www.communityconnection.org). The advantage of this was twofold – members information would be accessible and searchable online, and, from the database the county directory could be created.

As with any document of this type, there are bound to be changes. Let us know if there are corrections that need to be made as we can easily update the information at any time. If you are not in this directory we encourage you to make an entry into Community Connection. Call Fred Raithel at 1-888-463-6221 at the help desk. Our goal is to download data every year to create a new directory.

Note: all resources listed here serve Franklin County and tend to be of a non-profit nature. I hope you discover new resources for you and your clients.

This directory is available in PDF format for printing at our main web site -

<http://extension.missouri.edu/franklin/ServiceProviders>

Who we are -

The Franklin County Service Providers, a network of helping professionals representing agencies, organizations, schools, and concerned citizens, was established in 1992.

We meet to:

- Share resources
- Discuss ideas
- Become familiar with issues facing those we serve
- Avoid duplication of services

Please join us -

Meetings are held noon-1 p.m. the 1st Tuesday of each month, except July, on the East Central College campus at 1964 Prairie Dell Road, Hwy 50, east of Union, Missouri. Currently, there are over 100 agencies involved and we are growing. There is no membership fee.

For more information, contact our secretary, Lisa Epple, of East Central College, ph. 636-583-5195, ext. 2416, e-mail: epplelg@eastcentral.edu.

Together...for others,

Sandra McKinnon, 2006 Chair
University of Missouri Extension Center of Franklin County
Ph. 636-583-5141
mckinnons@missouri.edu

Table of Contents

Resources by topic

▶ Consumer and Small Business Services	1
▶ Criminal Justice and Legal Services	6
▶ Day Care	
▶ Children	9
▶ Adult.....	9
▶ Disabilities.....	10
▶ Education	
▶ Schools and Higher Education.....	14
▶ Education Programs and Resources	19
▶ Emergency Services	24
▶ Employment.....	28
▶ General Assistance	29
▶ Health	
▶ Associations/Foundation.....	36
▶ AIDS/HIV Services	44
▶ Home Care/Hospice/Hospitals	46
▶ Housing/Nursing Homes.....	48
▶ Substance Abuse Services.....	52
▶ Mental Health and Counseling Services	54
▶ Special Populations	
▶ Deaf/Blind	60
▶ Minorities.....	61
▶ Women	63
▶ Other	65
▶ Self-Help Groups.....	69
▶ Senior Services	71
▶ Youth Services.....	73
Alphabetical listing of resources	80

► Consumer and Small Business Services

Better Business Bureau
 15 Sunnen Dr., Suite 107
 St. Louis, MO 63143
 314-645-3300
 Fax 314-645-2666
 bbbstl@stlouisbbb.org
<http://www.stlouis.bbb.org>

Description: Promotes good consumer and business relationships, also provides information on firms' records.

Hours of Operation: Monday - Friday, 8:30am - 5:00pm; 24 hour voice response telephone assistance available

Driving Directions: Located off of Big Bend between Manchester Road and Laclede Station Road.

Funding Sources: We are funded by member companies.

Consumer Debt Counseling, Inc.
 ClearPoint Financial Solutions, Inc.
 Consumer Credit Counseling Service
 1300 Hampton Avenue
 St. Louis MO 63139
 Toll free 1-877-524-9990
 outreach@ccsstl.org
<http://www.cccsstl.org/>

Description: A community non-profit that can give you straight answers about your debt management problems. The agency is a nonprofit community service organization dedicated to helping people with money problems. Beside the administrative office in St. Louis, centers are also located in St. Charles, Florissant, and Arnold. Call toll free to make an appointment.

Department of Conservation, Metro St. Louis Office
 2360 Hwy D
 St. Charles, MO 63304
 636-441-4554
 Fax 636-926-9125
<http://mdc.mo.gov/areas/stlouis>

Hours of Operation: Monday - Sunday, 8:00am - 5:00pm

Directory of Missouri Foundations
 P.O Box 50299
 St. Louis, MO 63105
 314-725-6834
 foundations@primary.net

Description: Reference book on funding for not for profits, public institutions, people in need, and good students with need.

Hours of Operation: We can send you a brochure with additional information or take an order at any time by email or fax. Or leave us a phone message with your address.

Population Served: Not for profits, community volunteers, social workers, clergy, families with good students seeking assistance for college, and public institutions in MO, as well as for those along the border. The book is not for business.

Funding Sources: Funded by book fees and consulting.

Division of State Parks
P.O. Box 176
Jefferson City, MO 65102-0176
573-522-3259
Fax 573-751-8656
<http://www.mostateparks.com>

Description: Through the volunteer program, you have an opportunity to participate in many activities in state parks and historic sites.

Earth Share of MO
1915 Alfred Ave.
St. Louis, MO 63110-3522
314-771-6668 Ext. 1
Fax 314-865-3387
info@earthsharemo.org
<http://www.earthsharemo.org>

Description: A federation of non-profit organizations working throughout the world to help our environment.

Hours of Operation: Monday-Friday 9:00am-5:00pm.

East-West Gateway Coordinating Council
One Memorial Dr., Ste 1600
St. Louis, MO 63102
314-421-4220
618-274-2750
Fax 314-231-6120
postmaster@ewgateway.org
<http://www.ewgateway.org>

Description: The Metropolitan Planning Organization for the St. Louis Metropolitan Area. Provides a forum for cooperative problem-solving and the coordinated development of regional policy.

Four Rivers Branch - YMCA of Greater St. Louis
400 Grand Avenue
Washington, MO 63090
636-239-5704
fourrivers@ymcastlouis.org
<http://www.ymcastlouis.org/fourrivers>

Description: Health and fitness, aquatics, camping, family, childcare, world, sports, teen programs.

Hours of Operation: Monday - Friday, 5:30am - 10:00pm; Saturday, 8:00am - 6:00pm; Sunday, 12:00pm – 5:00pm

Franklin County Area United Way
 301 W. Front St.
 P.O. Box 3
 Washington, MO 63091
 636-239-1018
 Fax 636-390-0294
 unitedway_fa@sbcglobal.net
<http://www.franklincountyunitedway.org>

Description: The United Way provides support to 40 area agencies and programs in the Franklin County area.

Hours of Operation: Monday -Friday 9:00am – 5:00pm

Population Served: All populations are served through our 40 agencies and programs.

Driving Directions: Our office is located in the west side of the train depot in Washington.

Funding Sources: The primary sources for funding are corporations, businesses and the people in Franklin County.

Gerald Area Chamber of Commerce
 432 West Fitzgerald
 P.O. Box 274
 Gerald, MO 63037
 573-764-4627
<http://fidnet.com/~geraldcc>

Description: Help the community at large

Hours of Operation: We have no set hours, someone can be reached by calling and leave a message; all calls will be returned.

Population Served: We serve anyone in a 20 mile radius of Gerald.

Driving Directions: The Chamber Depot building is located on Hwy 50 in Gerald from I-44 take Hwy 50 West to Gerald and the Chamber Depot building is on the west end of town.

Funding Sources: Fund raisers and donations from our wonderful citizens.

Leftovers, etc. St. Charles
 1759 Scherer Parkway
 St. Peters, MO 63303
 636-946-9779
Leftoversetc1@aol.com

Description: A community-based, arts and science resource and learning center that provides traditional and non traditional educators with affordable household and industrial discards for use as educational learning tools. Provide instruction in developmentally appropriate, educational, family-centered activities for low-income, at risk and special needs youth.

Hours of Operation: Monday-Thursday 1:00pm-7:00pm; Saturday 9:00am-3:00pm

MedWise Patient Assistance Program
 Toll free 800-710-2758
rlspooner@hotmail.com

Description: Representative

Contact: Rebecca Spooner

Hours of Operation: Toll free line is open 24 hours a day.

Population Served: Working people, unemployed, seniors, students, families, single people.

Missouri Small Business Development Centers

1205 University Ave, Ste 300

Columbia, MO 65211

573-882-0344

Fax 573-884-4297

<http://www.missouribusiness.net/sbdc>

Description: Offers counseling and training to Missouri small businesses, or to those wanting to start a small business.

Funding Sources: Small Business Administration

Notes: Most services are offered at no charge to clients. Fees apply to some seminars and services such as patent or trademark searches. East central Missouri centers:

Empowerment Zone SBDC

100 N. Tucker, Ste. 530

St. Louis, MO 63101

314/241-1511

wilsonkr@missouri.edu

St. Charles Economic Development Center

5988 Mid Rivers Mall Dr, Ste 108

St. Charles, MO 63304-7119

636/928-7714

rmueller@edcstcharlescounty.com

St. Louis Enterprise Center SBDC

315 Lemay Ferry Rd, Suite 131

St. Louis, MO 63125

Phone: 314/631-5327

richtera@missouri.edu or

tuckergd@missouri.edu

St. Louis County Extension Center

121 South Meramec, Ste. 501

Clayton, MO 63105

314/615-2911

hoeflec@missouri.edu

St. Charles County Extension Center

260 Brown Rd

St. Peters, MO 63376

636/970-3000

Call Center University of Missouri-St. Louis

University Center, Room 269

St. Louis, MO 63121

Phone: 314/516-6121

hauffa@missouri.edu

Rural Missouri, Incorporated

1014 Northeast Drive

Jefferson City, MO 65109

573-635-0136

Toll free 1-800-234-4971

Fax 573-635-5636

<http://www.rmiinc.org>

Description: Provides loans to businesses

Hours of Operation: Monday – Friday 8:00am-5:00pm

Population Served: Most for-profit businesses in Missouri, parts of Illinois and Kansas.

Funding Sources: U.S. Department of Agriculture, Rural Development Administration
U.S. Small Business Administration

Notes: RMI's main office is in Jefferson City. We also have Offices in St. Louis, Kansas City and Lebanon.

Scenic Regional Libraries
<http://www.scenicregional.org>

Description: Provides a wide range of materials and services to meet the library needs of the residents of the Franklin, Gasconade, and Warren County Library Districts.

Hours of Operation: Call local branch or check website.

Notes: Libraries in Franklin County include:

Hermann – 573-486-2024

New Haven - 573-237-2189

Pacific – 636-257-2712

St. Clair - 636-629-2546

Union - 636-583-3224

Social Security Administration
1275 N. Hwy 47
Union, MO 63084
Toll free 800-772-1213

Description: Administers all phases of the Social Security Act, including retirement, disability, survivors and medicare benefits, SSI and SSA

Hours of Operation: Monday - Friday, 9:00am - 4:00pm

Population Served: Serves employees, their families and the self-employed.

Sullivan Area Chamber of Commerce
#2 West Springfield Rd
PO Box 536
Sullivan, MO 63080-0536
573-468-3314
Fax 573-860-2313
chamber@sullivanmo.com
<http://sullivanmo.com>

Description: Chamber of Commerce and Visitors Center for Sullivan

Contact: Sally Jo Schatz

Hours of Operation: Monday-Friday; 9:00am – 4:00pm

Driving Directions: Located on Historic Route 66, half way between the two Sullivan exits from I-44, numbers 225 & 226. Street is one block South from Service Road.

Funding Sources: 55% membership dues & 45% fundraising events/donations

Take Pounds Off Sensibly (TOPS)
www.tops.org

Description: International, non-profit, non-commercial weight- loss support group.

Population Served: Anyone wishing to take and keep pounds off sensibly.

Notes: Franklin County chapters:

#MO 0143 Pacific

#MO 0199 St. Clair

#MO 0822 Union

#MO 1028 Sullivan

#MO 1040 Lonedell

#MO 1129 Gray Summit

U.S. Consumer Product Safety Commission
 4330 East West Highway
 Bethesda, MD 20814
 301-504-7923
 Toll Free 800-638-2772
 Fax 301-504-0124 & 301-504-0025
 info@cpsc.gov
<http://www.cpsc.gov/>

Description: Call 24/7 to obtain product safety and other agency information and to report unsafe products.

USDA, Rural Development (State Office)
 601 Business Loop 70 West
 Parkade Center, Suite 235
 Columbia, MO 65203
 573-876-0976
 Fax 573-876-0970
 nonna.ross@mo.usda.gov
<http://www.rurdev.usda.gov/mo/index.html>

Description: This office supports 31 local offices and 7 area offices throughout the State, covering all Counties.

Hours of Operation: 8:00 am. - 4:30 pm. Monday - Friday

Population Served: Rural MO residents and communities

► Criminal Justice and Legal Services

Appellate - Post-Conviction District Office
 1221 Locust Street, Suite 350
 St. Louis, MO 63103
 314-340-7658

Description: Handles appeals and post-conviction matters for the eastern side of the state of Missouri.

Hours of Operation: Monday - Friday, 8:30am - 5:00pm

Population Served: Must meet indigence requirements.

Board of Probation and Parole District 16
 3 Truman Court
 Union, MO 63084
 636-583-8933
 Fax 636-583-7935

Emergency After Hours 1-888-869-3195

<http://www.doc.mo.gov/division/prob/16.htm>

Description: Provides for professional assessment and release of offenders and their supervision in the community, using appropriate treatment, sanctions and controls, with the primary consideration being promotion of public safety.

Hours of Operation: Monday - Friday, 8:00am - 5:00pm

Catholic Charities - Archdiocese of St. Louis
Catholic Legal Assistance Ministry (CLAM) 321 N. Spring, St. Louis, MO 63108
314-977-3993 Fax 314-977-3334

Franklin County CASA Inc
P.O Box 393
Union, MO 63084
636-583-4422

Description: Provides court appointed special advocates to children in foster care.
Population Served: Children within the foster care system in Franklin County.
Funding Sources: Grants, private donations, and fundraising events.

Franklin County Public Defender
4-B S. Church Street
Union, MO 63084
636-583-5197
Fax 636-583-1740

Contact: Lisa Preddy, District Defender
Hours of Operation: Monday - Friday, 8:30am - 5:00pm

Legal Advocates for Abused Women
3115 S. Grand Boulevard, Suite 102
St. Louis, MO 63118
314-535-5229
Toll Free 800-527-1460
<http://www.laawstl.org/>

Description: A local domestic violence organization in the greater St. Louis area that provides crisis intervention and support, legal information and advocacy, safety planning, and legal and social service referrals for victims of abuse (primarily low income women and their children) who have been battered, stalked or harassed. In addition, LAAW specializes in providing free legal representation at Order of Protection hearings for low income victims of abuse.
Hours of Operation: Monday - Sunday, 9:00am - 5:00pm; Intake done by phone, Monday - Friday from 9:00am - 4:00pm
Population Served: Persons age 18 and older in St. Louis City and the Counties of St. Louis, St. Charles, Franklin, Jefferson, Lincoln, Warren, and Washington.

Legal Services of Eastern Missouri
4232 Forest Park Avenue
St. Louis, MO 63108
Toll Free 800-444-0514
Fax 314-534-1028
info@lsem.org
<http://www.lsem.org>

Description: Provides quality legal assistance for low-income people of Eastern Missouri.
Hours of Operation: Monday - Friday 8:30 am-5:00 pm
Population Served: Legal Services of Eastern Missouri has an office in St. Louis and an office in Hannibal that together serve 21 counties. In St. Louis, LSEM counties include Franklin, Jefferson, St. Charles, St. Louis, St. Louis City, Warren and Washington. The Hannibal office serves residents of Adair, Clark, Knox, Lewis, Lincoln, Macon, Marion, Monroe, Montgomery, Pike, Ralls, Schuyler, Scotland and Shelby counties. Client eligibility based on household income limits and if case meets established priority guidelines.

Driving Directions: From I-40 take the Kingshighway North exit, turn right on Forest Park Avenue, located at Forest Park and Boyle

Funding Sources: Legal Services Corporation, United Way, Mid-East Area Agency on Aging, Washington University Clinic, Saint Louis University, IOLTA, State Funding, Ryan White Funding, Missouri Dept. of Public Safety, Capital Campaign

Legal Services of Eastern Missouri, Inc. (Union)
20 South Church Street, Suite C
Union, MO 63084
636-583-7877
Fax 636-583-7790
<http://www.lsem.org>

Description: Low-income individuals that reside in Franklin, Warren and/or Washington County can contact Legal Services of Eastern MO, Inc. (Union) for free civil legal assistance.

Hours of Operation: 8:00 a.m. - 5:00 p.m. Monday - Friday; closed on weekends

Population Served: Low-income individuals that reside in Franklin, Warren and Washington Counties.

Driving Directions: From Warrenton: Take Hwy 47 (through Washington) to Union, make a right on Hwy 50, turn right on Oak Street, turn right on Locust Street, and turn left on Church Street. Our building is the first one on your right (across the street from the courthouse). FROM POTOSI: Take Hwy 47 (through St. Clair) to Union. Make a left on Hwy 50, turn right on Oak Street, turn right on Locust Street, and turn left on Church Street. Our building is the first one on your right (across the street from the courthouse).

Funding Sources: Legal Services Corporation, STOP Grant, Franklin County Area United Way Grant

Notes: Provides an interpreter if one is needed. An interpreter just needs to be requested at the first point-of-contact.

Missouri Protection and Advocacy Services
2941 South Brentwood Blvd.
St. Louis, MO 63144
314-961-0679
Toll free 1-800-233-3958
Fax 314-961-0879
<http://www.moadvocacy.org/>

Description: A federally mandated system in the state of Missouri which provides protection of the rights of persons with disabilities through legally based advocacy.

Population Served: SSDI/SSI beneficiaries with a disability who need information and advocacy to assist in their return to work.

Victim Service Council
7900 Carondelet Ave
Clayton, MO 63105
314-889-3075

Description: Services to crime victims

► **Day Care**

► **Children**

Annie Malone Children and Family Service Center
 2612 Annie Malone Drive
 St. Louis, MO 63113
 314-531-0120
 Day care/Respite 314-382-5560
 Fax 314-531-1025
 amcfsc@swbell.net
<http://www.anniemalone.com>

Description: Multi-faceted social services organization dedicated to improving the lives of children and their families. Day care, crisis nursery and respite care (emergency care due to unusual circumstances), certified K-5 therapeutic elementary school, residential treatment service for children and adolescents, and adoption, foster care and case management.

Hours of Operation: Monday-Friday; 8am-6pm; 24 hour referral crisis line 314-531-1907

Population Served: Children, youth, adults in crisis.

Missouri Child Care Resource and Referral Network
 1 University Plaza, MS 9245
 Cape Girardeau, MO 63701
 573-290-5571
 Toll free 800-811-1127
<http://www5.semo.edu/ccrr>

Description: Linking parents with child care providers since 1995. Serves Franklin County.

Child Day Care Association
 4236 Lindell, Suite 300
 St. Louis, MO 63108
 314-531-1412
 Toll-Free: 800-467-CDCA
 Fax: 314-531-4184
 info@childcaresstl.org
<http://childcaresstl.org>

Description: 1) Assists families in locating and selecting child care options (by phone or online), 2) provides technical assistance & training to child care programs, 3) free listing of child care programs in their referral database.

Hours of Operation: Monday – Friday, 8:30 am – 4:30 p.m.

► **Adult**

Adult Day Services Center (UMSL)
 8351 S. Florissant Road
 St. Louis, MO 63121
 314-524-0155

Description: Adult day health care center for adults who need supervision & rehabilitation during the day.

Hours of Operation: Monday - Friday, 6:30am - 6:00pm

Population Served: Persons age 21 and older able to assist with own feeding, transferring and toileting.

St. Elizabeth Adult Day Care Center
 2142 Switzer
 St. Louis, MO 63136
 314-772-5107
 Fax 314-772-3674

Description: Adult day care

See also Health: Nursing Homes/Housing

► Disabilities

Ability Network
 284 Merchant Street
 Sainte Genevieve, MO 63670
 573-883-8181
 Toll free 1-866-483-3555
 Fax 573-883-8182
 info@abilitynetwork.org
<http://www.abilitynetwork.org>

Description: Services for individuals with developmental disabilities.

Hours of Operation: Monday - Friday 7:30am - 4:30pm

Population Served: Individuals with developmental disabilities birth through adult

Funding Sources: First Steps, Department of Mental Health (POS and Medicaid Waiver), DESE, Medicaid, insurance or other third party payer, private pay, Senate Bill 40 boards, school districts.

Adapt-Ability, Inc.
 9355 Dielman Industrial Drive
 St. Louis, MO 63132
 314-432-1101
 Fax 314-432-0780
 adapt@inlink.com
<http://www.adapt-ability.org>

Description: An independent, non-profit, charitable organization serving people with disabilities in assistive technology since 1986.

Hours of Operation: Monday - Friday, 8:30am - 4:30pm; employees will come in early or stay late on an as needed basis.

Center for Hearing-Speech, St. Louis/St. Charles County
 9835 Manchester Rd , St. Louis, MO 63119
 314-968-4710
 Fax 314-968-4762
<http://www.hearing-speechstlouis.org>

Description: Diagnostic hearing evaluations and hearing aids; speech/language evaluations and individual therapy programs for all ages, all abilities, all disorders.

Hours of Operation: Monday - Friday, 8:00am - 5:00pm

Population Served: All ages served, from newborn up.

Driving Directions: On 44 Heading West - Take the Elm Avenue exit. Turn right onto Elm. Turn left onto Kirkham. Turn right onto Rock Hill Road. Turn left on Manchester Road. The Center is located about .5 miles on the right (next to the McDonald's).

Funding Sources: Fees from service delivery (sliding fee scale available), United Way, government purchase of services contracts, private and foundation contributions

Easter Seals

See Health: Associations

Emmaus Homes
2200 Hwy D
Marthasville, MO 63357
636-433-2207
Fax 636-433-2216
<http://emmaushomes.org>

Description: Residential supports for adults with developmental disabilities.

Hours of Operation: 24 hours a day, seven days a week. Offices are open 8:30am-4:30pm, Monday-Friday.

Driving Directions: Located 10 miles north of Washington MO. From MO River bridge go seven miles to Marthasville, take hwy D, 4 and one half miles east on Hwy D. or From I-70, take the Foristell exit, go 13 miles south on Hwy T and take Hwy D to the right 1 1/2 miles to our community.

Funding Sources: MO Dept. of Mental Health, and SB 40 funding from Cole, Franklin and Warren Counties, as well as Federal Medicaid Home and Community Based Waiver.

Exceptional Equestrians of the Missouri Valley, Inc.
5667 Country Club
PO Box 1384 (Preferred Mailing Address)
Washington, MO 63090
636-390-2141
Fax 636-390-2820
info@eemv.org
<http://www.eemv.org>

Description: A volunteer based, not-for-profit organization providing people with disabilities enjoyable, affordable horsemanship experiences for therapeutic effect, developing and strengthening mind, body and spirit.

Hours of Operation: Monday 9am-8pm, Tuesday 9am-8pm, Thursday 9am-8pm, Friday 9am-7pm

Population Served: Anyone with a special need age 2 and up

Driving Directions: *From the Hwy 50 and Hwy 47 North intersection in Union:*

Go north on Hwy 47, Drive 4 miles, Turn left onto Country Club Lane; when you top the hill, make the right turn (straight ahead is a dead end); drive till you come to the stop sign (about a quarter mile); turn right onto Country Club Road; make the next left, this is our driveway. Follow the left branch of the drive down the hill to the main barn. (Following the branch to the right will lead to a private residence - please come to the barn.)

From the Hwy 100 and Hwy 47 intersection in Washington:

Go south on Hwy 47, drive 2 miles, turn right onto Country Club Lane, when you top the hill, make the right turn (straight ahead is a dead end), dDrive until you come to the stop sign (about a quarter mile), turn right onto Country Club Road, make the next left this is our driveway. Follow the left branch of the drive down the hill to the main barn.

Funding Sources: United Way of Franklin County, Developmental Services of Franklin County, Missouri Foundation for Health, Build-A-Bear Foundation, Boeing Employees, Community Fund, Enterprise Rent-A-Car Foundation, Old Newsboys, Cardinals Care, PetCo

Life Skills (St. Louis Metro Area)
 10176 Corporate Square Drive, Suite 100
 St. Louis, MO 63132-2924
 314-567-7705
 Fax 314-567-6539
 info@lifeskills-stl.org
<http://www.lifeskills-stl.org>

Description: Assists people with developmental or other disabilities to work and live with dignity in our community.

Hours of Operation: Life Skills--Office Hours: 8:30 am - 5:00 pm Monday - Friday. Individual Services: We serve individuals in their homes, on the job and in the community. Services are performed sometimes 24 hours a day -- 7 days a week. Or as little as a few hours per week, depending on the needs of the individual.

Population Served: Teens and adults in the St. Louis Metro area with developmental disabilities (i.e. mental retardation, downs syndrome, cerebral palsey, brain injury, learning disabilities etc.)

Funding Sources: MO Department of Mental Health, The Productive Living Board of St. Louis County, The Developmental Disabilities Board of St. Charles County, the Mental Retardation/Developmental Disabilities Board of St. Louis City, and Vocational Rehabilitation of MO.

MERS/Missouri Goodwill Industries - Franklin County
 1600A West Main St.
 Washington, MO 63090
 636-239-2225
 Fax 636-239-7137

Description: Offers job placement, job coaching and follow-up services for persons with developmental disabilities.

Hours of Operation: Monday - Friday, 8:00am - 5:00pm

Population Served: Persons with developmental disabilities; Must not be dangerous to self or others. Persons age 16 and older.

Metropolitan Employment and Rehabilitation Service
 1727 Locust Street
 St. Louis, MO 63103
 314-241-3464
 Fax 314-241-9348
metrorehab@aol.com

Description: Sheltered employment for aged and/or persons who are disabled.

Hours of Operation: Monday - Friday, 8:00am - 4:00pm

Population Served: Must not be dangerous to self or others. Persons age 16 and older.

Missouri Department of Health and Senior Services
 Division of Disability and Senior Services - Region 5
 1 Liberty Plaza
 Union, MO 63084
 636-583-2419
 Hotline 800-392-0210
www.dhss.state.mo.us

Description: Assists elderly and disabled to live as independenty as they can.

Hours of Operation: Monday-Friday 8:00am-4:00pm

Missouri Developmental Disabilities Resource Center
 2220 Holmes, HSB 344
 UMKC - Institute for Human Development
 Kansas City, MO 64108-
 800-444-0821
 Fax 816-235-1762
<http://www.moddrcc.com>

Description: Provides information and referral services about developmental disabilities at no cost to any individual, family or organization in Missouri.

Hours of Operation: Monday-Friday - 9:00 a.m. - 5 p.m.

Population Served: Our information is available, free of charge, to any individual, family, business, or organization in Missouri.

Driving Directions: Located on the Hospital Hill Campus of UMKC, near Children's Mercy Hospital and Truman Medical Center West. Call for directions.

Funding Sources: Funded, in part, by the Missouri Planning Council for Developmental Disabilities.

Missouri Protection and Advocacy Services
 See Criminal Justice and Legal Services

Rainbow Activity Center
 219 N. Christina
 Union, MO 63084
 636-583-4235
 Fax 636-584-0141
rainbowactivity@yahoo.com

Description: Day habilitation for adults with disabilities.

Hours of Operation: Monday-Friday 8:30 to 2:30

Population Served: Adults with MRDD over age of 21.

Driving Directions: At courthouse in Union, go West on Main St. At second 4-way stop go 1 1/2 blocks to 219 N Christina on the left.

Funding Sources: Medicaid Waiver, Senate Bill 40, United Way.

St. Louis Developmental Disabilities Treatment Centers
 211 North Lindbergh
 St. Louis, MO 63141
 314-340-6702
 Toll free 1-800-843-0183
 Fax 314-340-6724
<http://www.dmh.mo.gov/slddtc/index.htm>

Description: Improving the lives of people with developmental disabilities through residential support programs and services to enable those persons to live independently and productively.

Notes: One of 6 habilitation centers of the Missouri Department of Mental Health – Division of Mental Retardation and Developmental Disabilities.

St. Louis West Vocational Rehabilitation
 1845 Borman Court, Suite 100
 St. Louis, MO 63146
 314-340-4621
 Fax 314-340-4666

Description: Making a positive difference through education and service.

► **Education**

► **Schools and Higher Education**

Boonslick State School
321 Knaust
St. Peters, MO 63376
636-441-6465

Description: Programs for students who function in the severe range of mental retardation; daily living skills, functional academics, communication, self care, etc.

Population Served: Students must be severely disabled. Persons from ages 5 to 21.

Cornerstone Christian Academy
1352 Parkway Dr.
St. Clair, MO 63077
636-629-2501

Description: Private school

Crosspoint Christian
PO Box 100
Villa Ridge, MO 63089
636-742-5380

Description: Private school

East Central College
1964 Prairie Dell Road
Union, MO 63084
636-583-5193
Fax 636-583-1897
<http://www.eastcentral.edu>

Description: Transfer and career programs are offered in a variety of disciplines, as well as continuing education and customized training for business and industry. Support services are also available.

Population Served: Adult and youth in service area through courses taken for college credit, continuing education, summer day camp activities, and more. In district, out of district, out of state, and international students are served.

Driving Directions: Located just off Hwy 50, east of Union.

Franklin County R-II School District
3128 Hwy Y
New Haven, MO 63068-9531
573-237-2414
Fax 573-237-4838
<http://www.franklincountyr2.k12.mo.us/>

Notes: Schools in this district include:

Franklin County R-II (K-8th)

Immaculate Conception School
6 West State St.
Union, MO 63084
636-583-2641

Description: Private school

Immanuel Lutheran School
 214 W. Fifth Street
 Washington, MO 63090
 636-327-4416
 Fax 636-327-5054

<http://www.immanuel-washington.com/home.html>

Description: A certified Special Education teacher assists regular class teachers in classroom diagnosis and educational programming to meet students academic needs

Hours of Operation: Monday - Friday, 7:00am - 4:00pm

Population Served: Grade P-8th

Lonedell R-XIV School District
 7466 Hwy FF
 Lonedell, MO 63060-1515
 636-629-0401
 Fax 636-629-5561
<http://lonedell-r14.k12.mo.us/>

Notes: Schools in this district include:

Lonedell Elementary (K-8)

Meramec Valley Christian School
 PO Box 566
 Sullivan, MO 63080
 573-468-2949

Description: Private school, K-12

Meramec Valley R-III School District
 126 N Payne Street
 Pacific, MO 63069-1224
 636-271-1400
 Fax 636-271-1406
<http://www.mvr3.k12.mo.us/>

Notes: Schools in this district include:

Coleman Elementary (K-5th)

Nike Elementary (K-5th)

Robertsville Elementary (K-5th)

Truman Elementary (K-5th)

Zitzman Elementary (K-5th)

Meramec Valley Early Childhood Center (PK)

Meramec Valley Community

Meramec Valley Middle (6th-7th)

Riverbend (8th)

Pacific High (9th-12th)

New Haven School District
 100 Park Drive
 New Haven, MO 63068-0000
 573-237-3231
 Fax 573-237-5959

<http://www.shamrocks.k12.mo.us>

Notes: Schools in this district include:

New Haven Elementary (K-6th)

New Haven High (9th-12th)

New Haven Middle (7th-8th)

Our Lady of Lourdes
950 Madison Ave.
Washington, MO 63090
636-239-5292

Description: Private school

Spring Bluff R-XV School District
9374 Hwy 185
Sullivan, MO 63080-3850
573-457-8302
Fax 573-457-2070
<http://dese.mo.gov/directory/036134.html>

Notes: Schools in this district include:
Spring Bluff Elementary (K-8th)

St. Anthony Elementary School
101 W. Springfield
Sullivan, MO 63080
573-468-4423

Description: Private school

St. Bridget Elementary School
223 West Union St.
Pacific, MO 63069
636-257-4533

Description: Private school

St. Clair R-XIII School District
905 Bardot Street
St. Clair, MO 63077-1700
636-629-3500
Fax 636-629-4466
<http://stclair.k12.mo.us>

Notes: Schools in this district include:

Edgar Murray Elementary (3rd-5th)

St. Clair Jr. High (6th-8th)

Franklin County Special Education Cooperative (PK-12th)

St. Clair Elementary (K-2nd)

St. Clair High (9th-12th)

St. Clare Catholic School
125 East Springfield
St. Clair, MO 63077
636-629-0413

Description: Private school

St. Francis Borgia Elementary School
 225 Cedar Street
 Washington, MO 63090
 636-239-2590
 Fax 636-938-3267
<http://www.borgia.com/>

Description: Private school

St. Francis Borgia High School
 1000 Borgia Drive
 Washington, MO 63090
 636-239-7871
<http://www.borgia.com/>

Description: Private school

St. Gertrude
 6520 State Road YY
 Washington, MO 63090
 636-239-2347

Description: Private school

St. John the Baptist School
 5579 Gildehaus Rd.
 Villa Ridge, MO 63089
 636-583-2392
<http://www.sjgschool.org/>

Description: Private school

Strain-Japan R-XVI School District
 4640 Hwy H
 Sullivan, MO 63080-3215
 573-627-3243
 Fax 573-627-3243
<http://www.strainjapan.com>

Notes: Schools in this district include:
 Strain-Japan Elementary (K-8th)

Sullivan School District
 138 Taylor Street
 Sullivan, MO 63080-1936
 573-468-5171
 Fax 573-468-7720
<http://www.eagles.k12.mo.us>

Notes: Schools in this district include:
 Sullivan Primary (PK-1st)
 Sullivan Middle (6th-8th)

Sullivan Elementary (2nd-5th)
 Sullivan Sr. High (9th-12th)

Union R-XI School District
 1320 Independence Drive
 PO Box 440
 Union, MO 63084-0440
 636-583-8626
 Fax 636-583-2403
<http://www.union.k12.mo.us>

Notes: Schools in this district include:

Central Elementary (K-3rd)	Beaufort Elementary (K-6th)
Clark-Vitt Elementary (4th-6th)	Union Middle (7th-8th)
Union High (9th-12th)	

University of MO-St. Louis
 8001 Natural Bridge Road
 St. Louis, MO 63121
 314-516-5000
 Fax 314-516-5266
<http://www.umsl.edu>

Description: University program leading to degrees in arts and sciences, education, business administration, nursing, engineering and optometry; evening college and graduate school

Hours of Operation: Admin. Office hours: Monday - Friday, 8:00am - 5:00pm; Class hours 8:00am - 10:00pm Monday-Friday; Some department hours extended

Population Served: Must be accepted based on ACT/SAT scores and/or high school GPA. Persons age 16 and older.

Washington Montessori School
 713 Elm St.
 Washington, MO 63090
 636-239-5236

Description: Private school

Washington School District
 220 Locust Street
 PO Box 357
 Washington, MO 63090-0357
 636-239-2727
 Fax 636-239-3315
<http://www.washington.k12.mo.us>

Notes: Schools in this district include:

Washington High (9 th -12 th)	Four Rivers Career Center (9 th -12 th)
Washington Middle (7 th -8 th)	Augusta Elementary (PK-6 th)
Campbellton Elementary (K-6 th)	Clearview Elementary (PK-6 th)
Fifth Street Elementary (K-6 th)	Labadie Elementary (K-6 th)
Marthasville Elementary (K-6 th)	South Point Elementary (K-6 th)
Washington West Elementary (PK-6 th)	Family Resource Center (PK)

► Education Programs and Resources

Adult Basic Education/GED Program

East Central College

1964 Prairie Dell Road

Union, MO 63084

636-583-5193 ext 2592

Fax 636-583-1897

dreierb@eastcentral.edu

<http://www.eastcentral.edu>

Description: Offers classes in basic skills as well as GED test preparation.

Hours of Operation: Monday - Thursday 8:30am - 4:30pm., Friday 8:30 am to 12:30 pm.

Contact: Barbara Dreier, AEL Coordinator

Population Served: Persons age 16 and older.

Driving Directions: Prairie Dell Road and Highway 50 east of Union, across from Wal-Mart.

Notes: Other locations include 515 S. Main, St. Clair, MO 63077, 636-629-2733; Southwest Area Center, 11 N. Clark Street, Sullivan, MO 63080, 573-468-8287; Missouri Career Center in Washington; and Meramec Valley Community Room in Pacific. Or go online to MissouriGED at <http://www.gedonline.class.com>.

Center for Innovations in Education (CISE)

3 London Hall, University of Missouri-Columbia

Columbia, MO 65211-2390

573-884-7275

Fax 573-884-6300

mocise@missouri.edu

<http://www.cise.missouri.edu>

Description: A professional development center located at the University of MO-Columbia, College of Education, Department of Special Education.

Hours of Operation: Monday - Friday 7:30 a.m. - 5:00 p.m.

Population Served: Educators, school administrators, parents of children with special needs, childcare providers.

Driving Directions: Take I-70 to Providence Road south, turn left onto Stewart Road. London Hall is on the corner of Sixth Street and Stewart Road. CISE is located on the basement level of London Hall. Visitor parking is available on levels 3, 6, and 7 of Turner Avenue Garage.

Center on Adolescent Sexuality, Pregnancy and Parenting--CASPP

314 Gentry Hall, University of MO

Columbia, MO 65211

573-882-4416

Fax 573-884-4878

<http://extension.missouri.edu/hdfs/caspp.htm>

Description: Provides educational programs and conducts applied research to better understand how to prevent and improve the negative effects of high risk sexual behaviors and early childbearing.

Hours of Operation: Monday-Friday 8:00am – 5:00pm

Population Served: Professionals interested in research and training related to adolescent pregnancy and parenting

Funding Sources: Children's Trust Fund; Missouri Department of Health, Missouri Department of Elementary Education; Missouri Department of Social Services
University of Missouri Extension

Families for Home Education, Region 5

PO Box 742

Grandview, MO 64030

314-910-2645

fhregion5@eshackw.com

<http://www.fhe-mo.org/index.php>

Description: The purpose of FHE is to protect the inalienable right of parents in MO to teach their own children without state regulation and control.

Population Served: Home educating families

Notes: State VoiceMail: 816-767-9825

Franklin County Master Gardeners

116 W. Main

Union, MO 63084

636-583-5141

Fax 636-583-5145

herringm@missouri.edu

<http://extension.missouri.edu/franklin>

Description: Provides horticultural information and education to in an effort to expand to resources of University of Missouri Extension.

Contact: Matt Herring

Hours of Operation: 8:00 am - 4:30 pm Monday - Friday.

Franklin County University of Missouri Extension Center

116 West Main Street

Union, MO 63084

636-583-5141

Fax 636-583-5145

Franklinco@missouri.edu

<http://extension.missouri.edu/franklin>

Description: University of Missouri Extension provides practical, research-based information and problem-solving resources of the University of Missouri and Lincoln University.

Hours of Operation: 8:00 am - 4:30 pm Monday - Friday

Population Served: Programs and services are open to all.

Driving Directions: In Union, MO: from U.S. Hwy 50 go North on Oak Street to the stop sign at Main Street. Make a left onto Main, go five blocks (past United Bank of Union and Union Furniture). The Extension Center is on the left side of the street at 116 West Main.

Funding Sources: Supported by Federal, State and County Government appropriations. Federal and state funding provide the staff salaries, training and benefits while county funding covers the costs of a local office (rent, utilities, supplies, clerical support, travel, equipment maintenance, insurance, etc.).

Literacy Council of East Central Missouri

3145 Old Hwy 100

Villa Ridge, MO 63089

314-808-2439

Description: Teaching reading, spelling, writing, and life skills.

Contact: Jennifer Pennington

Hours of Operation: Monday - Saturday 8:00 am - 8:00 pm

Population Served: Adults in the Franklin County area

Funding Sources: Washington Area United Way

Missouri Alternatives Center
 3 Whitten Hall
 Columbia, MO 65211
 573-882-1905
 kellyd@missouri.edu
<http://agebb.missouri.edu/mac>

Description: Provides information and resources on alternatives in agriculture.

Hours of Operation: Web access - 24/7; office hours - Monday-Friday, 8:00 am - 5:00 pm

Population Served: Serves anyone interested in alternative agricultural enterprises and hobbies.

Parents As Teachers
<http://www.parentsasteachers.org/>

Discription: The overarching program philosophy of providing parents with child development knowledge and parenting support. The organizational vehicle for delivering that knowledge and support is Parents as Teachers National Center.

Contact: Call your local elementary school for a PAT near you:

Londell – 636-629-7441

Pacific – 636-271-1464

New Haven – 573-237-2141

Franklin County R-II – 573-237-2414

St. Clair – 636-629-3500

Sullivan – 573-468-5546

Union – 636-5833152

Washington – 636-390-2879

People Against Domestic Violence
 200 Cherry St.
 Union, MO 63084
 636-583-8443
 Fax 636-583-8443
padvhealingservice@sbcglobal.net
<http://www.geocities.com/padvfranklin>

Description: We reach out to victims of abuse and violence and implement innovative educational programs for the prevention of violence and abuse.

Hours of Operation: 9AM - 5PM Monday - Friday. Office hours can vary. Staff available through office cel phone: 636-399-7345.

Population Served: All of the population are eligible for service, individuals and families.

Driving Directions: From Highway 50 turn north on Oak Street, drive three blocks to Cherry Street, make left onto Cherry. Office is at the corner of Cherry and Mulberry Streets, two blocks from courthouse. Parking is on the street and in gravel lot behind building.

Funding Sources: United Way, other grants, and private funding

Project REACH - Main Office
 University of MO - Columbia
 1400 Rock Quarry Rd.
 Columbia, MO 65211-3280
 573-884-6696
 Fax 573-884-0598

Description: A resource for early care and education professionals.

Hours of Operation: Monday-Friday 8:00am-5:00pm

Public Policy Research Center (UMSL)
 362 Social Sciences/Business Building
 One University Blvd.
 St. Louis, MO 63121
 314-516-5273
 pprc@umsl.edu
<http://pprc.umsl.edu>

Description: Brings people together through research activities, programs, opportunities and expertise that foster university-community partnerships at the neighborhood and metropolitan level across the St. Louis region.

Hours of Operation: Monday - Friday, 8:00am - 5:00pm

Rape and Violence End Now (RAVEN)
 7314 Manchester Road,
 2nd Floor
 St. Louis, MO 63143
 314-645-2075
 Fax 314-645-2492
<http://www.ravenstl.org>

Description: Non-violence education program that offers batterer intervention groups, youth violence prevention groups and community education.

Hours of Operation: Monday - Friday, 9:00am - 5:00pm; additional groups on weekends and evenings

Population Served: Adult program serves persons ages 18 years and older. Youth program serves persons 12-17 years.

Rural Safety and Health
 207 Agricultural Engineering
 Columbia, MO 65211
 573-882-2731
 Toll free 1-800-995-8503
 Fax 573-884-5650

<https://fsb.missouri.edu/ruralsafety/index1.asp>

Description: Rural safety and health outreach programs and activities are offered statewide.

Population Served: All persons living and working within the state of MO.

Funding Sources: United States Department of Agriculture

Safety Council of Greater St. Louis
 1015 Locust St., Suite 902
 St. Louis, MO 63101
 314-621-9200
 Fax 314-621-9204
safetycouncil@stlsafety.org
<http://www.stlsafety.org>

Description: A not-for-profit, non-governmental, public service organization committed to making Metropolitan St. Louis a safer place in which to live, work, and play. This goal is being reached through the active participation of our members and the community in a variety of safety related educational programs and activities.

Hours of Operation: Monday - Friday 8 am to 5 pm

Satellite Office in High Ridge Thursday and by appointment, evening and weekend classes are conducted throughout the region

Driving Directions: The Safety Council has two locations, one in Mid-town St. Louis convenient to I-44, I-64/40, I-70; one in High Ridge just off Route 30 (Gravois) and Hwy 141.

Funding Sources: The primary funding source is fee for services and training programs. Some grants primarily supporting the community programs and events.

Special School District Family & Community Resource Center
12110 Clayton Rd
St. Louis, MO 63131
314-989-8108
Fax 314-989-8449

Description: Clearing house of information and referral for parents, teachers, and other professionals & community members.

St. Louis Arc Prevention Project
1816 Lackland Hill Pkwy. Suite 200
St. Louis, MO 63146
314-569-2211
Fax 314-569-0778
<http://www.slarc.org>

Description: A program operated by the St. Louis Arc, provides FREE public education on the lifelong implications of alcohol use during pregnancy. Prenatal alcohol exposure is a leading preventable cause of mental retardation in the United States.

Hours of Operation: Flexible

Population Served: Youth, adolescents, young adults, parents, health care providers, educators, social workers, counselors, disability service providers, criminal justice providers. Services are provided in Franklin, Jefferson, St. Charles, Lincoln, and St. Louis counties as well as St. Louis City, free of charge.

Driving Directions: Our program travels to you.

Funding Sources: The St. Louis Arc is a United Way agency. The Prevention Project is also funded by the MO Foundation for Health.

St. Louis Diabetes Coalition
PO Box 16712
St. Louis, MO 63105
(314) 446-6485
info@diabetescoalition.com
<http://www.diabetescoalition.org/>

Description: Working collaboratively to improve diabetes awareness, education and adherence to standards of care. Beginning Summer 2006, we will offer Diabetes School, a consumer directed service/website that links patients with diabetes education programs and events in the greater St. Louis region.

Hours of Operation: Please see the website for details.

Population Served: People with diabetes, health care providers, community organizations

St. Louis Homeschool Network - 3
3862 Flora Place
St. Louis, MO 63110
314-664-5566
regtill@swbell.net

Description: A support group for homeschooling families and an information source for prospective homeschoolers.

Hours of Operation: Seven days per week, 9:00am-5:00 pm

Population Served: Those interested in pursuing the homeschool option of education.

Driving Directions: E-mail or call for information on support group meeting sites.

ThinkFirst MO
232 South Woods Mill Road
Chesterfield, MO 63017
314-542-4765
Fax 314-205-6136
barbj@stlo.smhs.com
<http://www.thinkfirst.umh.edu>

Description: Creative and educational injury prevention programs for children, teens, and adults. The programs are delivered by motivated and energetic individuals who have sustained a brain or spinal cord injury.

Hours of Operation: Monday - Friday 8:00am-5:00pm

Population Served: School age children, young adults ages 15-21, adults

Funding Sources: MO Department of Transportation-Highway Safety Division, Missouri Department of Health & Senior Services, HealthSouth, University of MO-Columbia*School of Medicine

► Emergency Services

A.L.I.V.E. - Alternatives to Living In Violent Environments
P O Box 223
Union, MO 63084
636-583-9863
Toll free 1-800-941-9144
Fax 636-583-6648
alivefc@sbcglobal.net
<http://www.alivestl.org>

Description: Provides support services to adults and children victimized by domestic violence.

Hours of Operation: Monday-Friday, 9:00am-5:00pm. Toll free hotline is available 24 hours.

Population Served: Adults and children who have been victimized by domestic violence.

Driving Directions: Office is located in Union; however, we have a confidential location. Anyone interested in attending, must call the office first.

Funding Sources: United Way of Franklin County, MO Foundation for Health, Victim's of Crime Act, Violence Against Women Act, and other private foundations and grants.

Behavioral Health Response
P.O. Box 1125
Maryland Heights, MO 63043
314-469-6644
Toll free 800-811-4760
Fax 314-469-0412
<http://www.bhrworldwide.org>

Description: 24 hour crisis hotline for all residents of the Eastern Region of Missouri.

Hours of Operation: 24 hours, 7 days a week, 365 days a year

Population Served: All residents of all ages in St. Louis City, and St. Louis, Jefferson, Warren, Franklin, Lincoln and St. Charles counties.

Funding Sources: Funding from Eastern Region Community Mental Health Centers. Other funding from grants and fees.

Community Outreach
 17 East 4th Street
 P. O. Box 336
 Gerald, MO 63037
 573-764-4357

Description: Emergency food pantry & resale shop.

Contact: Maria Killian

Hours of Operation: Friday & Saturday only, Food Pantry 9:00am-12:00pm, Finders Keepers Resale Shop 9:00am – 4:00pm

Population Served: Individuals and families in need.

Driving Directions: Hwy 50 to Hwy H, 2 blocks turn right on 4th Street, located on the right in Finders Keepers Resale Shop

Funding Sources: Community & area churches.

Crisis Nursery St. Charles
 315 First Capitol Drive
 St. Charles, MO 63301
 636-947-0600
 Fax 636-947-1425
 info@crisisnurserykids.com
<http://crisisnurserykids.com>

Description: A temporary shelter for children, birth through age 10, whose families are in crisis. The mission is to prevent child abuse and provide support services to families.

Contact: Angie Osborne, Program Coordinator

Hours of Operation: Open 24 hours a day, 365 days a year.

Population Served: Families experiencing a crisis or needing respite services. Children, birth through age 10 are provided a safe haven.

Driving Directions: Located directly across from the St. Joseph Health Center Emergency Room in St. Charles.

From St. Louis: take Highway 70 West to the 5th street exit. Travel north to First Capitol Drive and turn right. Crisis Nursery St. Charles is located on the right (south) side of the street.

Funding Sources: Funded through foundations, corporations, individuals and special events. St. Joseph Health Center generously provides the space for Crisis Nursery St. Charles. In addition, Crisis Nursery St. Charles receives funding from the St. Charles Community Assistance Board, a Community Development Block Grant, Developmental Disabilities Resource Board and numerous civic and community organizations.

KUTO - Kids Under Twenty One
 2718 South Brentwood Blvd.
 St. Louis, MO 63144
 314-963-7571
 Toll Free Helpline 1-888-644-KUTO (5886)
 Fax 314-963-7574
<http://www.KUTO.org>

Description: Kids Under Twenty One strives to be a lead agency in utilizing youth & adult partner volunteers in providing peer facilitated crisis prevention, suicide intervention and postintervention support to youth.

Hours of Operation: Monday-Friday 10am-5pm.; Crisis Helpline hours are Sunday-Thursday 4pm-10pm, Friday-Saturday 4pm-12am.

Population Served: We are a teen focused agency dealing in crisis intervention, but assist many members of the community with Outreach Trainings & Activities, In-Service Trainings, and Helpline referrals.

Funding Sources: Private funding from corporations, foundations & individual contributors and the United Way of Greater St. Louis.

Mid-Missouri Crisis Line
Columbia, MO 65203
573-445-5035
Toll free 1-888-761-4357
Fax 573-445-5088
mmcl.staff@gmail.com

Description: Provides 24-hour crisis intervention services via the telephone.

Funding Sources: State of Missouri, Department of Mental Health, Division of Alcohol and Drug Abuse; State of Missouri, Department of Public Safety.

Robertson Center, The
Confidential Location
PO Box 17
Troy, MO 63379
636-462-2724
Hotline/Crisis 636-462-3355
Toll free 1-877-462-1758
Fax 636-462-3176
dvhelp@nothnbut.net

Description: Provides shelter for victims of domestic violence

Hours of Operation: 24 Hours/day, 7 days/week

Population Served: Women and children

Funding Sources: United Way, Department of Public Safety, DFS Shelter & Support Services

Notes: All services are free of charge

SEMSAR (Samaritan Emergency Medical Search and Rescue)
P.O. Box 406
Raymore, MO 64083
816-853-1544
<http://www.semsar.org>

Description: A Christian based not-for-profit organization specializing in search and rescue, law enforcement/security operations, and emergency medical services.

Population Served: We believe that all of mankind, regardless of race, sex, age, or personal ethic, is of priceless value in the eyes of God, and worthy of our highest efforts in all aspects of rescue service, without prejudice or mercenary intention.

Funding Sources: We accept all kinds of donations. We also teach a variety of classes and apply to various grant opportunities.

Shepherd's Inn
806 S. Hwy 47
Warrenton, MO 63383
636-456-4567

Description: Provides overnight emergency shelter to individuals or families

Hours of Operation: Overnight emergency shelter hours are 6:00pm - 7:00am Monday - Friday

St. Vincent de Paul

Description: Emergency assistance for those who have exhausted all other available assistance.

Hours of Operation: Home visitations made by appointment.

Population Served: Individuals and families in need.

Funding Sources: Church collections.

Notes: Locations include:

Holy Family (Port Hudson)/St Gerald (Gerald)
124 Holy Family Church Road
New Haven, MO 63068
573-459-6441

St. Francis of Assisi (Luebbering)
100 Luebbering Road
Luebbering, MO 63061
636-629-1717

Immaculate Conception (Union)
100 N. Washington Avenue
Union, MO 63084
636-583-5144

St. Gertrude (Krakow)/
St. Ann (Clover Bottom)
6535 Hwy YY
Washington, MO 63090
636-239-3913

Our Lady of the Lourdes (Washington)
1014 Madison Avenue
Washington, MO 63090
636-239-3520

St. James (Catawissa)/
St. Mary's (Villa Ridge)
1107 Summit Drive
Catawissa, MO 63015
636-271-6038

St. Bridget (Pacific)
111 W. Union
Pacific, MO 63069
636-257-6926

St. John the Baptist (Gildehaus)
5567 Gildehaus Road
Villa Ridge, MO 63089
636-583-2488

Woman's Place

7372 Marietta

Maplewood, MO 63143-3036

314-645-4848

Fax 314-645-4683

<http://www.womansplacestl.org>

Description: Drop-in-center of hospitality for adult women who have been or are being abused seeking crisis intervention and support services.

Hours of Operation: Monday-Friday 10:00am-5:00pm. No appointments necessary.

Population Served: Adult Women

Driving Directions: Downtown Maplewood MO between Big Bend Blvd. and McCausland, Sutton is 1-1/2 blocks East of Big Bend, Woman's Place is on the corner of Sutton and Marietta just one block south of Manchester. Easy access from Highways 40/64 and 44.

Notes: Public parking one block away East on Marietta

Youth In Need-Emergency Shelter
 529 Jefferson Street
 St. Charles, MO 63301
 636-946-3771
 Fax 636-925-0116
 bbesand@youthinneed.org
<http://www.youthinneed.com>

Description: Temporary shelter, counseling, alternative education, recreation, crisis intervention, and case management for displaced you ages 10-18.

Contact: Bethany Besand

Hours of Operation: 27/7

Population Served: Adolescent males and females ages 10-18.

► Employment

Division of Vocational Rehabilitation - St. Louis South
 Department of Elementary and Secondary Education
 3248 Laclede Station Road
 St. Louis, MO 63143
 314-877-1900
 Toll free 877-222-8968
 Fax 314-877-1920
<http://vr.dese.mo.gov/>

Description: Provides employment oriented services for Missourians with disabilities.

Hours of Operation: Monday - Friday, 8:00am - 4:30pm

Driving Directions: I-44E, take exit 282/Laclede Station Rd. toward Murdoch Ave, left on Laclede Station Rd., office on the right.

Metropolitan Employment and Rehabilitation Service

See Disabilities

Missouri Career Center
 1108 Washington Square
 Washington, MO 63090
 636-239-6703
 Fax 636-239-0329
washington@ded.mo.gov
<http://www.greathires.org>

Description: A one-stop career center offering a full-range of career services to the general public and veterans.

Hours of Operation: Monday, Wednesday and Friday 7:30am - 5:00pm; Tuesday and Thursday 7:30am - 9:00pm

Population Served: Employers, youth, adults, dislocated workers, unemployed, employed and anyone in need of our services

Driving Directions: Located at the intersection of Hwy. 47 and Hwy. 100 behind J.C. Penney in the Washington Square Shopping Center.

Missouri Dept. of Labor and Industrial Relations
 Division of Employment Security
 Regional Claim Center
 PO Box 8859
 St. Louis, MO 63101-8859
 314-340-4950
 Toll free 1-800-320-2519
 Fax 314-340-4755
<http://www.dolir.mo.gov/es>

Description: Complete job referral and placement, including vocational counseling and on-the-job training through JTPA (Job Training Partnership Act).

Hours of Operation: Monday - Friday, 8:00am - 5:00pm

Population Served: Persons age 16 and older.

Parents Fair Share
 212 Turner Boulevard
 St. Peters, MO 63385
 636-278-1360, ext. 281
 Toll Free 800-759-7999
 Fax 636-278-1843

Description: A program designed to help non-custodial parents gain self-sufficiency.

Hours of Operation: Monday-Friday 8:00am-5:00pm

Population Served: Non custodial parents; applicant must be unemployed, have an active child support case with current support due and must be at least 18 years of age.

Funding Sources: Operated by the State of Missouri, Division of Workforce Development

► General Assistance

AGAPE Christian Care Center
 1095 N Service
 St. Clair, MO 63077
 636-629-0053
 Fax 636-629-0053

Description: Food pantry distributes USDA products

Population Served: Franklin County

Agape Help House of Pacific
 125 N. 1st St.
 Pacific, MO 63069
 636-271-5315
 Fax 636-271-7266

Description: Thrift Store

Hours of Operation: Monday and Friday 9:00am-12:00pm; Tuesday - Thursday 9:00am-5:00pm; Saturday 9:00am-1:00pm

Population Served: Franklin County

American Red Cross, St. Louis Area Chapter
 10195 Corporate Square Drive
 St. Louis, MO 63132
 314-516-2800
 Fax 314-516-2821
 arcstlcs@crossnet.org
<http://www.redcrossstl.org>

Description: Helps people prevent, prepare for and respond to emergencies and disasters. The mission is carried out through services directed and governed by volunteers.

While Franklin County is not part of the St. Louis Area Chapter's jurisdiction, we do ensure that it is served in the areas of disaster response, emergency messaging for the military, international tracing, and disaster education.

Hours of Operation: Monday - Friday, 9:00am - 5:00pm; case worker on duty 24 hours a day, seven days a week, including holidays

Population Served: Persons age 16 and older.

Catholic Charities - Archdiocese of St. Louis
 4532 Lindell Blvd.
 St. Louis, MO 63108
 314-367-5500
 Fax 314-361-5099
 info@ccstl.org
<http://www.ccstl.org>

The largest private provider of social services in the state of Missouri. Organized as a federation, Catholic Charities is comprised of 12 agencies offering more than 100 programs to assist, on average, more than 100,000 poor and impoverished people annually.

Notes:

St. Patrick Health Center, 800 N. Tucker Blvd., St. Louis, MO 63103
 314-802-0700, Fax 314-802-1982

Description: Mobile outreach, casserole program, substance abuse treatment, and the Rosati Transitional Living Center

Community Health In Partnership (CHIPS)
 2431 N. Grand
 St. Louis, MO 63106
 314-652-9231
 Fax 314-533-5430
 info@chipsstlouis.org
<http://www.chipsstlouis.org>

Description: A not-for-profit organization that provides healthcare and social services for the uninsured and underserved.

Hours of Operation: Monday-Friday 8:30am-5:00pm, Saturday by appointment

Population Served: Uninsured, Insured, Medicare, Medicaid recipients. All ages.

Franklin County Department of Health
 15 South Oak Street
 Union, MO 63084
 636-583-7300
 Fax 636-583-7305
 fchealth@yhti.net
<http://www.franklinmo.org>

Description: Protect and improve the general health of all residents of Franklin County.

Hours of Operation: Monday - Friday 8:00am - 4:30pm

Closed on major holidays and weekends.

Population Served: All residents of Franklin and surrounding counties

Driving Directions: In Union, MO: from Highway 50, turn north onto Oak Street (at Hardee's Restaurant and BP gas station). Proceed four (4) blocks, the Franklin County Health Department is across from the County Courthouse on the west side of Oak Street.

Funding Sources: Our primary funding source is through State and Federal Grants for specific programs, as well as minimal fees charged for services. We have no tax base in Franklin County.

Notes: All medical and WIC services are provided through appointments ONLY. Nominal fees are due at the time services are provided (for those services that require payment of a fee).

Habitat for Humanity of Franklin County, Inc.
 PO Box 178
 Union, MO 63084
 636-583-1020
 habitatfc@hotmail.com

<http://www.franklincountyhabitatforhumanity.org/home.htm>

Description: Builds simple, decent houses for qualified, selected families to buy with no interest loans.

Population Served: Low-income

Funding Sources: Contributions from individuals, faith-based and other organizations

Harmony Health Plan
 23 Public Square
 Suite 400
 Belleville, IL 62220
 618-236-8050
 Toll Free 800-608-8156
 Fax 618-233-3621

Description: A MC+ managed care health plan offers additional benefits, such as transportation.

Population Served: Primarily low income families, pregnant women, and children in Southern Illinois and Eastern Missouri.

Driving Directions: Cross the Poplar Street Bridge (Hwy 64 East) to 4th Street, right onto Broadway to 15th Street, left on Missouri Avenue, to Hwy 15 to the Illinois exit, go left to Public Square.

Harmony House
 416 Market Street
 Washington, MO 63090
 636-239-2778

Description: Harmony Thrift Shop has discount items available

Hours of Operation: Monday - Friday, 8:00am - 4:00pm; Thrift store is open 10:00am - 3:00pm; Monday -Friday

HealthCare USA (Eastern MO)
10 South Broadway, Suite 1200
St. Louis, MO 63102
Toll Free 800-566-6444
<http://www.chchcusa.com>

Description: MC+ Managed Care Health Plan

Hours of Operation: 8:00 am - 5:00 pm, Monday - Friday

Population Served: Children, pregnant women

Jefferson Franklin Community Action Corporation
(Jefferson and Franklin Counties)
#2 Merchant Dr.
PO Box 920
Hillsboro, MO 63050
636-789-2686
Fax 636-789-5736
communityaction@jfcac.org
<http://www.jfcac.org>

Description: Services for low-income elderly, families and children – energy assistance, Head Start, Women’s Infants and Children’s Supplemental nutrition program, housing, weatherization, family support and community services.

Hours of Operation: Monday-Friday, 8:30 am - 4:30 pm

Funding Sources: Missouri Department of Social Services, Department of Housing and Urban Development, Department of Health and Human Services, Missouri Department of Health, Missouri Department of Natural Resources.

Loving Hearts Outreach
700 E. 5th St.
PO Box 1054
Washington, MO 63090-3410
636-390-8300
Fax 636-390-8333

Description: Food Pantry distributes USDA products

Population Served: Franklin County

Lutheran Family and Children's Services of Missouri
8631 Delmar Blvd.
St. Louis, MO 63124
314-787-5100
Toll free 1-866-326-LFCS
Fax 314-534-1515
lfcsmo@lfcs.org
<http://www.lfcsmo.org>

Description: Offers adoption services, emergency foster care, pregnancy counseling, counseling, youth mentoring program, and a disaster response program.

Hours of Operation: Monday - Thursday, 8:30am - 8:00pm; Friday 8:30am - 4:30pm

Population Served: Persons age 21 to 65.

Meramec Community Mission
733 Elmont
Sullivan, MO 63080
573-468-5813
Fax 573-468-5813

Description: Food pantry distributes USDA product

Missouri Department of Health, WIC
930 Wildwood
P.O. Box 570
Jefferson City, MO 65102
800-392-8209
www.dhss.state.mo.us/wic/

Description: Provides resources and materials on nutrition topics to community and clients of all ages.

Hours of Operation: WIC Administrative Office - Call for WIC clinic locations & hours

Missouri Department of Social Services
Children's Division
1 Liberty Plaza
PO Box 930
Union, MO 63084
636-583-2571
Fax 636-583-8670

<http://www.dss.mo.gov/cd/office/franklin.htm>

Description: Services for the prevention of child abuse and neglect.

Missouri Department of Social Services
Family Support Division - Franklin County Office
Income Maintenance and Self-Sufficiency Programs
#1 Liberty Plaza
P.O. Box 930
Union, MO 63084
636-583-2571
Fax 636-583-8670

<http://www.dss.mo.gov/fsd>

Description: Provides cash assistance, healthcare coverage, child care assistance, and food stamps to those in need.

Hours of Operation: Monday - Friday, 7:00 a.m. - 5:00 p.m.

Driving Directions: From Highway 47, turn west at the Independence Drive intersection. Office is located on the left, approximately 1 mile from the intersection.

From Highway 50, turn north at the Independence Drive intersection. Office is located on the right, approximately 1.5 miles from the intersection.

Missouri Department of Social Services
Division of Youth Services – St. Louis Region
Room 331, Wainwright Building
111 North 7th St.
St. Louis, MO 63101
314-340-6904
Fax 314-340-7721

Description: Charged with the care and treatment of youth committed to its custody by one of the 45 Missouri juvenile courts. Toward this end, DYS operates treatment programs ranging from non-residential day treatment centers through secure residential institutions. Additionally, DYS administers the Interstate Compact on Juveniles, operates an accredited school program, and maintains a statewide statistical database of juvenile court referrals.

Missouri Family Health Council, Inc.
1909 Southridge Dr.
P.O. Box 104475
Jefferson City, MO 65110-4475
573-636-4060
Fax 573-636-2045
info@mfhc.org
<http://www.mfhc.org/>

Description: Administers the Title X federal family planning program for Missouri.

OATS
519 E. Independence Drive
Union, MO 63084
636-583-1630
Toll Free 800-373-1631
<http://www.oatstransit.org>

Description: Provides reliable transportation to disadvantaged Missourians.

Notes: Call or visit website for bus schedules.

Planned Parenthood Health Centers
4251 Forest Park Ave
St. Louis, MO 63108
314-531-7526
<http://www.ppslr.org>

Description: Six local reproductive health care clinics

Hours of Operation: Varies per clinic - Hours available from Monday-Saturday, including some evening hours.

Population Served: Women, men and teens needing reproductive health care services in St. Louis and surrounding areas.

Salvation Army
 1130 Hampton Avenue
 St. Louis, MO 63139
 314-646-3000
 Fax 314-646-3182

<http://www.salvationarmystlouis.org>

Description: Emergency assistance, senior programs, homeless services, children's programs, community centers, and disaster services designed to help people attain, or regain, self-sufficiency.

Notes: Corps Community and Worship Centers located in O'Fallon, Arnold, St. Charles, and throughout St. Louis.

St. Francis Borgia Food Pantry
 311 W. 2nd St.
 Washington, MO 63090
 636-239-3724
 Fax 636-938-3267

Description: Food pantry

Population Served: Franklin County

U.S. Department of Health and Human Services-Region VII
 200 Independence Avenue, S.W.
 Washington, D.C. 20201
 Telephone: 202-619-0257
 Toll Free: 1-877-696-6775
<http://www.hhs.gov/>

Description: United States government's principal agency for protecting the health of all Americans and providing essential human services.

Union Food Pantry
 200 Cherry St.
 Union, MO 63084
 636-584-7050

Description: Individuals or families can come once a month, up to four times, if more, need to be recertified.

Hours of Operation: Mondays and Thursdays, 2:00pm-4:00 pm

Population Served: Low-income families

Driving Directions: Located in Presbyterian Church Annex, across street (Mulberry) east of church, east side of annex. Church is one block west and one block north of courthouse. Parking available.

Funding Sources: Some individuals and church groups from time to time to buy what not donated. Food item donations are from churches, Boy Scouts, Postal workers, schools, etc.

► **Health**

► **Associations/Foundations**

Alzheimer's Association
9374 Olive Blvd.
St. Louis, MO 63132-3214
314-432-3422
Fax 314-432-3824
helpline@alzstl.org
<http://www.alzstl.org>

Description: Provides support for people with dementia and their caregivers.

Hours of Operation: Monday 9am-8pm, Tuesday - Friday 9am-5pm

Population Served: Anyone who is concerned and/or affected by Alzheimer's or any related dementia.

Driving Directions: From I-170, go to Olive and go West to 9374 Olive.

American Cancer Society-St. Louis Metro
4207 Lindell Blvd
St. Louis, MO 63108
314-286-8100
Fax 314-286-8160
<http://www.cancer.org>

Description: A nationwide community-based voluntary health organization dedicated to eliminating cancer as a major health problem by preventing cancer, saving lives, and diminishing suffering from cancer, through research, education, advocacy, and service.

Hours of Operation: Monday-Friday 8:30am -5:00pm.

American Diabetes Association
10820 Sunset Office Drive; Suite 220
St. Louis, MO 63127
314-822-5490
Fax 314-822-5479
Toll free 1-888-DIABETES
<http://www.diabetes.org>

Description: Referrals to support groups for youth, parents and adults with diabetes to provide social and emotional support.

Hours of Operation: Monday - Friday, 8:30am - 5:00pm.

American Heart Association, Greater St. Louis Division
460 N. Lindbergh Blvd.
St. Louis, MO 63141
314-692-5635
Toll free 1-800-AHA-USA1
Fax 314-692-5694
<http://www.americanheart.org>

Description: Community education on cardiovascular disease & stroke programs are available for children, adults, the public and professionals.

Hours of Operation: Monday - Friday, 8:00am - 5:00pm; toll free information available 24 hours a day, 7 days a week

American Lung Association of Eastern MO
 1118 Hampton Avenue
 St. Louis, MO, MO 63139-3196
 314-645-5505
 Fax 314-645-7128
<http://www.lungusa.org>

Description: The oldest voluntary health organization in the United States, with a National Office and constituent and affiliate associations around the country.

Arthritis Foundation, Eastern MO Chapter
 8390 Delmar Boulevard
 St. Louis, MO 63124
 314-991-9333
 Fax 314-991-4020
Info.emo@arthritis.org
<http://www.arthritis.org>

Description: Improves lives through leadership in the prevention, control, and care of arthritis and related diseases; offers limited financial help for persons who have arthritis (must fall within WIC guidelines).

Hours of Operation: Monday - Friday, 8:30am - 4:30pm; answering service/machine after hours

Asthma and Allergy Foundation of America - St. Louis Chapter
 1500 South Big Bend, Suite 1S
 St. Louis, MO 63117
 314-645-2422
 Fax 314-645-2022
aafa@aafastl.org
<http://www.aafastl.org>

Description: Provides children who suffer from asthma and allergies with life-saving medications, equipment, and educational and emotional support

Brain Injury Association of Missouri, St. Louis Chapter and State Association
 10270 Page Avenue
 St. Louis, MO 63132
 314-426-4024
 Fax 314-426-3290
 Toll free 1-800-377-6442
<http://www.biamo.org>

Description: Family support groups meet monthly for parents, friends and survivors of brain injury to discuss various issues: medical, advocacy, social, etc., educational/ training programs, camp/respice, prevention, and mentoring.

Hours of Operation: Monday - Friday, 8:00am - 4:30pm; call in advance

Population Served: Serves all ages.

Funding Sources: Totally funded through contributions

Cystic Fibrosis Foundation-Gateway Chapter
 200 South Hanley, Suite 620
 St. Louis, MO 63105
 314-721-2490
 Toll free 1-800-727-1464
 Fax 314-721-2809
 gateway@cff.org
<http://www.cff.org/Chapters/gateway>

Description: Non-profit, donor-supported organization supporting people with Cystic Fibrosis and their families.

Easter Seals MO (Corporate Office)
 13975 Manchester Road
 Manchester, MO 63011
 636-227-6030
 Toll Free 800-664-5025
 Fax 636-779-2270
 mail@easterseals-mo.org
<http://www.mo.easter-seals.org>

Description: Creates solutions that change lives of children and adults with disabilities or other special needs and their families.

Hours of Operation: Monday-Friday 8:30 am - 4:30 pm

Population Served: Children and adults with disabilities or other special needs.

Driving Directions: Take Hwy 44 to Kingshighway exit. Go North on Kingshighway. Left on Northrup (first left after passing under the Hwy 44). Easter Seals is the first building on the right after the U-Haul building.

Funding Sources: Varies by location but include, parent fees, state and local government contracts, Area United Ways, insurance, and contributions from the general public.

Epilepsy Foundation of the St. Louis Region
 7100 Oakland Avenue
 St. Louis, MO 63117
 314-645-6969
 Fax 314-645-1520
 epilepsy@stl-epil.org
<http://www.epilepsyfoundation.org/stlouis>

Description: Helps clients with epilepsy who have problems involving insurance, social security, job-related issues, etc.

Hours of Operation: Monday - Friday, 8:30am - 5:00pm

Huntington's Disease Society of America- St. Louis Chapter
 8039 Watson Road
 St. Louis, MO 63119-5325
 314-961-4372
 Fax 314-961-5754
 hdsa@stlouis.missouri.org
<http://www.hdsa.org>

Description: Provides support and education for HD families

Juvenile Diabetes Research Foundation
 Metro Saint Louis/Greater Missouri Chapter
 225 S Meramec Avenue
 Suite 1032T
 St. Louis, MO 63105
 314-726-6778
 Fax 314-726-1659
 metrostlouis@jdrf.org
<http://www.jdrf.org/stlouis>

Description: Research, support, education and advocacy for people with Type 1 (Juvenile) Diabetes.

Hours of Operation: Open Monday - Friday from 9:00am - 5:00pm

Population Served: Children and teens with type 1 (juvenile) diabetes and their friends and families

Lens Crafters Foundation
 92 Chesterfield Mall
 Chesterfield, MO 63017
 636-537-5969

Description: Eye services

Leukemia Society of America, Inc. – Gateway Chapter
 77 Westport Plaza, Suite 101
 St. Louis, MO 63146
 314-878-0780
 Toll free 1-800-264-CURE
 Fax 314-878-4050
<http://www.leukemia.org>

Description: Financial aid up to \$750/yr/patient for out-patient chemotherapy, transfusions, radiation for patients with Leukemia, Lymphoma, Hodgkin's or Multiple Myeloma; transportation allowance.

Hours of Operation: Monday - Friday, 8:30am - 5:00pm

Population Served: Patients with Leukemia, Lymphoma, Hodgkin's or Multiple Myeloma. Serves all ages.

Lupus Foundation of America, MO Chapter
 8390 Delmar Boulevard, Suite 215
 St. Louis, MO 63124
 314-432-0008
 Toll free 1-800-9-LUPUS
 adminlupus@sbcglobal.net
<http://www.lupusmo.org/>

Description: The mission of the Lupus Foundation of America, MO Chapter is to improve the lives of people with lupus through community education, research, and patient support.

Hours of Operation: Monday-Friday 9:00 am-4:00 pm

Driving Directions: Take Hwy I-170 and exit on Delmar. Take Delmar east (towards downtown). The office is on the south side of the street on the corner of Delmar and Del Crest Ave. Parking is in the rear of the building.

March of Dimes, Greater St. Louis Chapter
 2001 S. Hanley Rd., Suite 10
 Brentwood, MO 63144
 314-646-8601
 Fax 314-646-8607
 MO633@marchofdimes.com
<http://www.marchofdimes.com/missouri/>

Description: Not-for-profit improving the health of babies by preventing birth defects, premature birth, and infant mortality.

Mental Health Association (MHA) of Greater St. Louis
 1905 South Grand Boulevard
 St. Louis, MO 63104
 314-773-1399
 info@mhagstl.org
<http://www.mhagstl.org>

Description: Large non-profit organization addressing all aspects of mental health and mental illness.

Hours of Operation: Monday - Friday; 9:00 - 5:00

Population Served: Anyone needing help or information regarding mental health

Driving Directions: 1 block south of I-44 and Grand Blvd., on the western edge of downtown St. Louis

Funding Sources: United Way, memberships, donations, grants, etc.

Missouri Chapter of the National Neurofibromatosis Foundation
 1015 Locust Street,
 Suite 1032
 St. Louis, MO 63101
 314-436-6877
 Fax 314-436-0524
 NFMO@aol.com
<http://www.nf.org/MO/>

Description: A non-profit 501(c)(3) medical foundation, dedicated to improving the health and well being of individuals and families affected by the neurofibromatoses (NF).

Missouri Council for In-Home Services
 PO Box 1803
 Jefferson City, MO 65102
 573-635-6044
 info@penman-winton.com
<http://www.mohomecare.org/>

Description: An organization for those who provide in-home healthcare services to elderly and people with disabilities. These services includes, but are not limited to, personal care, housekeeping, respite, nursing visits, advanced personal care, chore services, personal care and companion, and assistance with errands.

Missouri Lions Eye Research Foundation - St Louis
 4482 Woodson Road
 Suite 7
 St Louis, MO 63134
 314-428-4373
 Fax 314-428-3751
 info@mleerf.org
<http://www.mleerf.org>

Description: Dedicated to the preservation and restoration of sight; to diligently serving the people in our area first, then aiding those in other states and countries; to finding the causes and cures of blinding eye diseases through scientific research; to preserving sight through eye care programs, and making sight restoration possible through eye banking.

National Kidney Foundation of Eastern MO & Metro-East, Inc.
 1423 Hanley Industrial Drive
 St. Louis, MO 63144
 314-961-2828
 Fax 314-961-0888
 Toll free 1-800-489-9585
 mail@nkfstl.com
<http://www.nkfstl.com>

Description: A major voluntary health organization seeking to prevent kidney and urinary tract diseases, improve the health and well-being of individuals and families affected by these diseases, and increase the availability of all organs for transplantation.

National Multiple Sclerosis Society - Gateway Area Chapter
 1867 Lackland Hill Parkway
 St. Louis, MO 63146
 314-781-9020
 Fax 314-781-1440
 info@gatewaymssocietymorg
<http://www.nationalmssociety.org/mos/home>

Description: A non-profit, voluntary health organization guided by a single mission: to end the devastating effects of multiple sclerosis.

Driving Directions: From Hwy. 44 and 270 - Take Hwy. 270 North to Page Ave/ West PortExit on Page Ave (East)/West PortAt the second stop light turn right onto Westport Center Dr.At the first stop light make a left onto Lackland Rd Then make a right onto Lackland Hill Pkwy. (The Meadows just past Schnucks headquarters) Follow road as it bends to the left then make a left into the parking lot and then a quick right into our parking lot, follow to #1867. Look for our logo sign above the door and on the glass!

National Ovarian Cancer Coalition- St. Louis Division
 7118 Shady Hill Drive
 St. Louis, MO 63129
 (314)-846-1128
<http://www.ovarian.org>

Description: Leading ovarian cancer public information and education organization in the United States.

Population Served: Women with ovarian cancer and survivors

National Reye's Syndrome Foundation

426 N Lewis Street

PO Box 829

Bryan, OH 43506

419-636-2679

Toll free 1-800 233-7393

Fax 419-636-9897

nrsf@reyessyndrome.org

<http://www.reyessyndrome.org>**Description:** Provides emotional support to victims of Reye's Syndrome and their families.**Hours of Operation:** Monday - Friday, 8:00am-5:00pm, EST.**Funding Sources:** Membership, donations**Notes:** We serve every county of every state in the USA.

Polycystic Kidney Disease Foundation

9221 Ward Parkway

Suite 400

Kansas City, MO 64114-3367

Toll Free 800-PKD-CURE

816-931-8655

pkdcure@pkdcure.org

<http://www.pkdcure.org>**Description:** Dedicated to finding a cure for Polycystic Kidney Disease

Post-Polio Health International

4207 Lindell Blvd. #110

St Louis, MO 63108

314-534-0475

Fax 314-534-5070

info@post-polio.org

<http://www.post-polio.org>**Description:** Actively promotes education, research, advocacy**Hours of Operation:** Monday-Friday 8:30 - 5:30.**Population Served:** Polio survivors, users of home mechanical ventilation, the health professionals who treat them, and their families and friends.**Driving Directions:** On Lindell Blvd. between Sarah and Boyle just east of N. Kingshighway off of Interstate 64.**Funding Sources:** Memberships, sponsorships, and donations.

Prisoner Family Services of Lutheran Ministry Association

3540 Marcus Avenue

St. Louis, MO 63115

314-381-5955

Fax 314-381-6001

Description: Low-cost transportation from St. Louis to 20 correctional centers all across Missouri

Saint Louis Society for the Blind and Visually Impaired
 8770 Manchester Road
 Brentwood, MO 63144
 314-968-9000
 Fax 314-968-9003
<http://www.slsbvi.org>

Description: A private, not-for-profit organization providing services to help individuals who are blind or visually impaired remain independent.

Sickle Cell Anemia Disease Association
 1408 N Kings Hwy, Suite 207
 St. Louis, MO 63113
 314-361-4400
 Fax 314-367-0174
<http://sicklecelldisease.org>

Description: To promote finding a universal cure for sickle cell disease while improving the quality of life for individuals and families where sickle cell related conditions exist.

Spina Bifida Association of Greater St. Louis
 8050 Watson Road
 Suite 115
 St. Louis, MO 63119
 314-843-2244
 Toll Free 800-784-0983
 sbastl@charter.net
<http://www.sbastl.com/>

Description: Service, support and opportunities for people with Spina Bifida and neural tube defects.

St. Louis Dietetic Association
 c/o St Louis Univ Dept of Nutrition and Dietetics
 3437 Caroline, Rm 3076
 St. Louis, MO 63104
 314-977-8664
 Fax 314-977-8520
 slda@slda.org
<http://www.slda.org>

Description: Your link to finding nutrition and food service professionals in the St. Louis metropolitan area.

Hours of Operation: Ours in a professional organization, rather than a business. One of our members will return your call, letter or email as soon as possible after you contact us.

Population Served: Our members serve the entire metropolitan St. Louis community, both the Missouri and the Illinois sides.

United Ostomy Associations of America
 Toll Free 800-826-0826
<http://www.uoaa.org>

Description: UOAA is a national network for bowel and urinary diversion support groups in the United States.

Contact: Ken Aukett, President of the UOAA Management Board of Directors

Vasculitis Foundation
 P.O. Box 28660
 7 NW 72nd Street
 Kansas City, MO 64118
 Toll Free 800-277-9474
 Fax 816-436-8211

<http://www.vasculitisfoundation.org>

Hours of Operation: Monday - Friday, 8:30am-5:00pm

Population Served: General public and medical personnel

Driving Directions: The home office is located north of the river between Englewood and North Oak.

Funding Sources: Memberships are primary funding, we also received funding from United Way, AARDA and fundraising.

► AIDS/HIV Services

Alexian Brothers Salus Place
 2703 Keokuk
 St. Louis, MO 63118
 314-771-5400
 Fax 314-771-5454

<http://www.alexianhealthsystem.org/facilities/missouri/salus.html>

Description: Provides transitional housing for persons living with HIV/AIDS and with a history of chemical dependency.

Hours of Operation: 24 hours per day.

Population Served: Persons living with HIV/AIDS who have a history of chemical dependency.

Doorways
 4385 Maryland Avenue
 St. Louis, MO 63108
 314-535-1919
 Fax 314-535-0909

info@doorwayshousing.org

<http://www.doorwayshousing.org>

Description: Provides safe, affordable housing where people with HIV/AIDS.

Hours of Operation: Monday-Friday: 8:00 am - 5:00 pm

Population Served: Individuals and families living with HIV/AIDS needing housing assistance and support or a residential facility.

Driving Directions: Administrative Office located in Central West End of St. Louis City. One block north of Lindell, 7 blocks east of Kingshighway

Funding Sources: Funding from State, Federal and Local Government sources and from individuals, foundations and religious organizations.

Project ARK (Aids/HIV Resources and Knowledge)
 4169 Laclede Avenue
 St. Louis, MO 63108
 314-535-7275
 Fax 314-535-1814
<http://projectark.wustl.edu>

Description: Provides services that enhance the lives of children, youth, young adults, women and families infected, affected and at risk for HIV disease through coordination of medical care, social support and prevention services.

Hours of Operation: Monday-Friday 9:00am - 5:00 pm; weekend hours by appt. only

Funding Sources: Funded through the Ryan White Title IV program. The title IV network includes funded partners such as Washington University and Saint Louis University based comprehensive HIV programs and Legal Services of Easter MO and multiple AIDS service and community based organizations that are non-title IV funded partners that together create a continuum of care for Title IV population groups.

Driving Directions: Hwy 64/40 East, exit 36D Chouteau Ave./Vandeventer, left on Vandeventer, left on Laclede Ave.

Notes: Also offers Health and Education for Youth - http://projectark.wustl.edu/ARK_HEY.html

Description: A health care and community education program for youth ages 13-24 who may be at risk for HIV, or who are living with HIV/AIDS. Confidential medical care, support groups, psychosocial activities and access to community resources, free HIV antibody counseling and testing, and educational and interactive programs.

Metro St. Louis HIV Health Services Planning Council
 3545 Lafayette Ave., Salus Center, Suite 300
 Saint Louis University School of Public Health
 St Louis, MO 63104
 314-977-8143
 Fax 314-977-1441
info@stlpc.org
<http://www.stlpc.org>

Description: The purpose of the council is to plan for and design the system of care for persons with HIV.

Hours of Operation: Monday-Friday 9am-5pm

Metropolitan Center for HIV/AIDS Services
 City of St. Louis Dept. of Health
 634 N. Grand Blvd., Suite 436
 St Louis, MO 63103
 314-612-5188
 Fax 314-612-5445

Description: Case management services for people living with HIV/AIDS.

Hours of Operation: 8am - 5pm

Missouri AIDS Drug Assistance Program (ADAP)
 Missouri Department of Health and Senior Services
 930 Wildwood
 Jefferson City, MO 65102-0570
 (573) 751-6439

Description: Drug assistance program for people with HIV or AIDS.

Population Served: Un- or underinsured HIV/AIDS patients

St. Louis Effort for AIDS
 1027 South Vandeventer Suite 700
 St. Louis, MO 63110
 314-645-6451
 Fax 314-645-6502
 stlefa@stlefa.org
<http://www.stlefa.org>

Description: Provides education on the prevention of HIV and STDs and support services for people affected by HIV/AIDS.

Hours of Operation: Office hours Monday-Friday 9:00am-5:00pm.
 AIDS/STD Helpline (314) 647-1144, Monday-Friday, 9:00am-5:00pm

Funding Sources: United Way Agency since 1991

Williams and Associates, Inc.
 3618 North Spring Ave.
 St. Louis, MO 63108
 314-531-2284
 Fax 314-531-9722
 info@wmsandassoc.org
<http://www.wmsandassoc.org/>

Description: Serves as a catalyst in the fight against HIV/AIDS, while providing life enhancing education, disease prevention, health promotion, and care services that address the health disparities of minorities in the St. Louis Bi-State region, with particular regard to African Americans.

► Home Care/Hospice/Hospitals

American Heartland Hospice

507 Potosi Street
 Farmington, MO 63640
 573-756-0554

7555 S. Lindbergh Boulevard
 St. Louis, MO 63125
 314-894-8189
 Fax 314-894-7334

Description: Hospice offers palliative (comfort) care to terminally ill patients and provides access to supportive services to patients and their families in both home and facility-based settings.

Hours of Operation: Monday - Friday, 8:00am - 4:30pm; answering service covers all non-office hours and RN is on call for patient needs

Population Served: Call for information. Serves all ages.

American HomeCare Management
 525B South Main
 St. Clair, MO 63077
 636-629-1230
 Fax 636-629-7818

Description: Provides in-home services to the elderly and disabled so that they may remain independent in their homes.

Hours of Operation: Office hours are Monday-Friday 8:00am-4:30pm. However, there is someone on call 24 hours a day, 7 days a week to assist you if needed.

Notes: Corporate office: 573-888-0339

BJC Home Care Services
 9890 Clayton Road
 St. Louis, MO 63124
 314-953-1840
 Fax 314-953-1812
<http://www.bjc.org>

Description: Non-profit healthcare organization providing hospice care for terminally ill children and adults.

Hours of Operation: Monday - Friday, 8:00am - 6:00pm; Saturday and Sunday, 8:00am - 4:30pm; on-call 24 hours a day

Missouri Baptist Hospital of Sullivan
 751 Sappington Bridge Road
 PO Box 190
 Sullivan, MO 63080
 573-468-4186
 Fax 573-860-2696

<http://www.missouribaptistsullivan.org/>

Description: Voluntary not-for-profit hospital, general medical-surgical

Progressive Patient Care Plus, Inc.
 115 Liberty Plaza
 PO Box 287
 Union, MO 63084
 636-583-9400

Description: Provides homemaker assistance and personal care in the home.

Odyssey HealthCare, Inc. - A Hospice Company
 9360 Dielman Industrial Drive
 St Louis, MO 63132
 314-991-6693
 Fax 314-991-6726
<http://www.odshealth.com>

Description: Provides out-patient hospice care in private homes and residential facilities to terminally ill patients who are located in MO within 50 miles of our office.

Hours of Operation: Hospice staff care for patients around the clock, but our office hours are Monday-Friday 8:00am-8:00pm and Saturday 8:00am-5:00pm.

Population Served: Terminally ill patients and their loved ones regardless of age, race, ethnicity, gender, income, religious affiliation, and so forth.

Driving Directions: Serves patients in private homes as well as nursing facilities and other residential facilities. Directions provided to these locations as needed.

To get to our office: Take 170 to the exit for Olive Blvd. (MO-340). Go west on Olive Blvd. to Dielman Road (Walgreen's on your right). Turn right onto Dielman Road and proceed to Dielman Industrial Drive on your right. Turn right onto Dielman Industrial Drive and turn into the second driveway on your right. Look for the purple "Odyssey" awning over our office door.

Funding Sources: Medicare, Medicaid, managed care/HMO, private insurance, private pay

St. John's Mercy Hospital
 901 East 5th St.
 Washington, MO 63090
 636-239-8667
 Fax 636-569-6733

<http://www.stjohnsmercy.org/>

Description: Church-affiliated, general medical-surgical, inpatient & outpatient; cardiac catheterization; level III trauma center; helicopter service available

Population Served: All persons regardless of age, ethnic background, religious belief, ability to pay.

Driving Directions: At the intersection of Highway 47 and 5th Street.

Unity Health Hospice
 1615 Heritage Hills
 Washington, MO 63090
 636-239-7128
 Fax 636-239-5742

<http://www.unity-health.org/hospice>

Hours of Operation: Monday- Friday 8:00am-4:30pm

Population Served: Touching the lives of individuals with terminal illness

► Housing/Nursing Homes

ACS Hope Lodge Center of St. Louis
 4215 Lindell Boulevard
 St. Louis, MO 63130
 314-286-8150
 Fax 314-286-8155

Description: Housing for patients of St. Louis area hospitals and their families

Hours of Operation: 24 hours

Population Served: Patients and their families

Auxiliary Hospital Hospitality House at St. Louis University Hospital
 3631 Hickory
 St. Louis, MO 63110
 314-268-5350
 Fax 314-268-5112

Description: Patient/family housing for patients and families of St. Louis University Hospital.

Hours of Operation: Open 24 hours

Catholic Charities - Archdiocese of St. Louis
Housing Resource Center 800 North Tucker Blvd., St. Louis, MO 63101
 Hotline 314-802-5444 Fax 314-241-5608 Toll free 1-866-802-7155
 ccoh@ccstl.org www.ccstl.org

Full array of housing services, from shelter placement to homeowner services. Serving the homeless, low to moderate income families, those in need of shelter, those in need of utility assistance, homeowners in need of repairs or mortgage assistance.

Arizona Care Center
101 Arizona
New Haven, MO 63068
573-237-4830

Description: A long term care facility providing residential care.

Bristol Manor of Pacific
2049 Rose Lane
Pacific, MO 63069
636-257-8020

Description: A long term care facility providing residential care.

Bristol Manor of Washington
100 West 12th Street
Washington, MO 63090
636-390-0050

Description: A long term care facility providing residential care.

Cedarcrest Manor
324 West 5th Street
Washington, MO 63090
636-239-7848

Description: A long term care facility providing skilled nursing care.

Gerald Nursing & Rehab
533 Canaan Road
P.O. Box 180
Gerald, MO 63037
573-764-2135
Fax 573-764-2771
geraldad@fidmail.com

Description: Skilled nursing facility

Hours of Operation: Office hours: Monday-Friday, 8am - 4pm

Population Served: Franklin & Gasconade County residents

Grandview Healthcare Center
201 Grand Avenue
Washington, MO 63090
636-239-9190

Description: A long term care facility providing skilled nursing care.

Happy Acres Retirement Home
2665 North Service Road West
Sullivan, MO 63080
573-927-5562

Description: A long term care facility providing residential care.

Lakewood Care Center
 Lakeview Drive
 P.O. Box 552
 Pacific, MO 63069
 636-271-2018

Description: A long term care facility providing residential care.

Life Care Center of Sullivan
 875 Dunsford Drive
 PO Box 49
 Sullivan, MO 63080
 573-468-3128

Description: A long term care facility providing skilled nursing care.

Meramec Nursing Center
 940 Mattox Drive
 Sullivan, MO 63080
 573-468-7733
 Fax 573-860-3168
 nurse@fidnet.com
 www.comm-care.com

Description: A long term care facility providing skilled nursing care.

Hours of Operation: Tours available on request. Office hours 8:00 - 4:00 Monday - Friday

Driving Directions: Hwy 44 west to second Sullivan exit. Left to south service road. Right on service road to Hwy D. Follow Hospital signs; hospital on right, center is on the left.

Funding Sources: Medicaid, Medicare, Hospice, Private Pay, Private Insurance, Managed Care Contracts.

Notes: Located across the street from BJC Hospital of Sullivan.

New Haven Care Center
 9503 Hwy 100
 New Haven, MO 63068
 573-237-2103
 Fax 573-237-3953
 nhcare@fidnet.com

Description: A long term care facility providing residential care, skilled nursing care.

Hours of Operation: Facility visiting hours 7:30 am to 10 pm. Business hours Monday-Friday 8 am to 4:30 pm.

Funding Sources: Community owned and operated not-for-profit facility.

Notes: Philosophy based on person-centered planning.

Pacific Care Center, Inc.
 105 S 6th Street
 Pacific, MO 63069
 636-271-4222

Description: A long term care facility providing skilled nursing care

Ridgeway Residential Care
 431 Russell Road
 PO Box 267
 Sullivan, MO 63080
 573-468-4318

Description: A long term care facility providing residential care

St. Clair Nursing Center
 1035 Plaza Court North
 St. Clair, MO 63077
 636-629-2100

Description: A long term care facility providing skilled nursing care.

Sullivan Residential Care Center
 775 Dunsford Road
 Sullivan, MO 63080
 573-468-2600

Description: A long term care facility providing residential care

Sunset Health Care Center
 400 West Park Avenue
 Union, MO 63084
 636-583-2252

Description: A long term care facility providing intermediate care, skilled nursing care

Tanglewood Care Center
 1930 Hwy F
 Pacific, MO 63069
 636-271-5561

Description: A long term care facility providing residential care.

Washington Residential Care Center
 2525 East 5th Street
 Washington, MO 63090
 636-239-0670

Description: A long term care facility providing residential care

Willow Brooke Assisted Living
 1 Potomac Court
 Union, MO 63084
 636-583-2799
 Fax 636-583-6950
<http://www.americareusa.net>

Description: Provides health care services for adult population

Hours of Operation: 24/7

Population Served: Elderly

Driving Directions: Highway 47 to Independence Drive to Washington Street
 Roosevelt to Potomac Court

Funding Sources: Tiered pricing based on level of care, private pay, long-term care insurance

Notes: Particate in Financial Assistance Programs for those who qualify; Medicaid, Veteran Benefits, Mason's/Eastern Star

Wren Hollow Residential Community
 HC 65, Box 168C
 Sullivan, MO 63080
 573-678-2511

Description: A long term care facility providing residential care

**For more information on
 Nursing Homes and Other Care Options –**

Visit <http://dhss.mo.gov/NursingHomes/index.html>. You will find information on how to select a nursing home, compare nursing homes, locate a Missouri licensed long-term care facility and view inspection results, learn how facilities are inspected, alternative care choices, licensing and certification, laws, regulations and manuals, and you may file a complaint about a nursing home or person that is suspected of being abused or neglected.

► **Substance Abuse Services**

B.A.S.I.C. (Black Alcohol/Drug Service Information Center)
 1221 Locust, Suite 800
 St. Louis, MO 63103
 314-621-9009
 Fax 314-621-1071
 stlbasic@swbell.net

Description: Offers culturally specific treatment for addiction to the African American community.

Crossroads Program
 626 Cepi Dr.
 Chesterfield, MO 63005
 636-532-9991
 Fax 636-532-6609

contactus@thecrossroadsprogram.com
<http://www.thecrossroadsprogram.com>

Description: Drug and alcohol treatment for young people ages 13-24 and their parents. Twelve step based.

Hours of Operation: Monday - Friday 10am-5pm

Population Served: Young people ages 13-24 and their parents

Driving Directions: From I-44, take exit 253/Hwy 100, left on Hwy 100, turn left on Hwy 109, right on Wild Horse Creek Rd./Hwy CC, left on Long Rd., left on Chesterfield Airport Rd., left on Cepi Dr.

Funding Sources: Private treatment program.

Hannibal Council on Alcohol and Drug Abuse
 146 Communications Drive
 Hannibal, MO 63401
 573-248-1196
 Fax 573-248-1259

Description: Substance abuse treatment for men and women with alcohol and/or drug addictions who are MO residents.

Hours of Operation: Outpatient office hours: Monday through Friday, 8:00am - 8:00pm; detoxification hours: Detox offered 24 hours daily

Population Served: Adult men and women with alcohol and/or drug addictions. Women are allowed to bring children (up to age 12) to treatment with them based on availability.

Driving Directions: Take Hwy. 61 North to Wendy's. Take the outer road (past O'Reilly's) which is Clinic Dr--streets are not marked well. Communications Drive is on the first right. HCADA is located at the top of the hill.

Funding Sources: Missouri Department of Mental Health, Sliding Scale (based on income), Federal Probation and Parole, Private-Pay, VA, Medicaid (women only)

Notes: Interpreter available, if needed (prior notice required)

National Council on Alcoholism and Drug Abuse, St. Louis
 8790 Manchester Road
 Brentwood, MO 63144
 314-962-3456
 Fax 314-968-7394
 ncada@ncada-stl.org
<http://www.ncada-stl.org>

Description: Substance abuse prevention through peer based programs, community development, teen institutes on substance abuse and parent/teacher training (grades 1-12).
Hours of Operation: Monday - Friday, 9:00am - 5:00pm; Evening & weekend counseling by appointment

Population Served: Children from age 5 to 20.

New Beginnings C-Star, Inc.
 (Comprehensive Substance Treatment and Rehabilitation)
 3901 N. Union Blvd. Ste.101
 St. Louis, MO 63115
 314-367-8989
 Fax 314-367-2188

Description: Outpatient counseling to adults and adolescents.

St. Charles County Recovery Center
 #6 Jungerman Circle, Suite 201A
 St. Peters, MO 63376
 636-916-9711

Description: Provides chemical dependency services and psychiatric assistance for adults.

Hours of Operation: Monday - Thursday, 8:30am - 8:00pm; Friday, 8:30am - 4:00pm; Saturday, 10:00am - 1:00pm

Population Served: Adults.

West County Recovery Center
 522 N. New Ballas Road
 Suite 122
 St. Louis, MO 63141
 314-997-7665
 Fax 314-997-4423

Description: Provides chemical dependency services for adults

Hours of Operation: Monday, Wednesday, Thursday 8:30am - 9:00pm; Tuesday, Friday 8:30am- 4:30pm

Population Served: Adults. Persons age 18 and older.

► Mental Health/Counseling Services

Alliance for the Mentally Ill - NAMI St. Louis
 134 W. Madison Avenue
 Kirkwood, MO 63122
 314-966-4670
 Fax 314-966-4672
<http://www.namistl.org>

Description: Information and referral to agencies, facilities, professionals dealing with the mentally ill; promotes interests of the mentally ill; general support to mentally ill and families.

Hours of Operation: Monday - Friday, 9:00am - 5:00pm; 24 hour recording device

Population Served: All populations served. Family support services provided at Prince Hall Family Support Center, BJC Behavioral Health and Metropolitan Psychiatric Center.

Funding Sources: United Way and The City of St. Louis Mental Health Board of Trustees

Behavioral Health Response
 P.O. Box 1125
 Maryland Heights, MO 63043
 314-469-6644
 Toll free 800-811-4760
 Fax 314-469-0412
<http://www.bhrworldwide.org>

Description: 24 hour crisis hotline for all residents of the Eastern Region of Missouri.

Hours of Operation: 24 hours, 7 days a week, 365 days a year

Population Served: All residents of all ages in St. Louis City, and St. Louis, Jefferson, Warren, Franklin, Lincoln and St. Charles counties.

Funding Sources: Funding from Eastern Region Community Mental Health Centers. Other funding from grants and fees.

Bridgeway Counseling Service

1570 South Main St.

St. Charles, MO 63303

636-757-2200

Toll free 1-866-758-1152

Fax 636-757-2210

<http://www.bridgewaycounseling.com>

Description: Headquartered in St. Charles, Bridgeway is a non-profit organization specializing in treatment and services for addictive disorders, domestic violence and sexual assault. Provides outpatient and residential treatment centers for men and women.

Population Served: Franklin, Lincoln, Montgomery, St. Charles, Warren and St. Louis counties.

Catholic Family Services

Mental Health Services and Substance Abuse*Family Wellness* 100 W. Main Street, Union, MO 63084

636-583-1800

Toll free 1-800-583-8355

Fax 636-583-0836

Provides marriage and family counseling and individual, family and group psychotherapy.

Hours of Operation: Monday - Friday, 8:30am - 5:00pm; Evening hours by appointment only

Christian Psychological and Family Services (Counseling)

9378 Olive Blvd., Ste. 314

St. Louis, Missouri 63132

314-567-4994

Fax 314-567-8581

<http://www.christianpsychological.com/>

Description: Non-profit providing professional counseling & psychological services in Christian value atmosphere.

Hours of Operation: By appointment only -- days, evenings, weekends.

Population Served: All served; all psychological problems; ages 4-90.

Community Psychological Service

1 University Blvd.

Stadler Hall 232

St. Louis, MO 63121-4499

314-516-5824

Fax 314-516-5347

cps@umsl.edu<http://www.umsl.edu/~cps>

Description: A not-for-profit outpatient mental health clinic providing evaluation and therapy services for child and adult clients.

Hours of Operation: Monday-Friday 8:30am -5:30pm

Population Served: Infants to geriatric clients.

Driving Directions: From I-70 or I-170 exit Natural Bridge Rd. and go East. Take Natural Bridge Rd. approximately two miles to the University of MO - St. Louis campus. Turn left on West Drive. Turn right on Benton Drive. Park in the parking lot on Benton Drive.

Community Treatment, Inc. d/b/a Comtrea, Inc.
 227 Main Street
 Festus, MO 63028
 636-931-2700
 Fax 636-931-5304
 comtrea@jcn1.com
<http://www.comtrea.org>

Description: A private, non-profit mental health agency offering a wide range of services which can help you, or those you care for develop a lifestyle which is positive and life enhancing.

Hours of Operation: Monday-Friday 8:00am - 4:30pm

Population Served: All Ages

Driving Directions: From Interstate 55 South, take exit #175. Turn left onto A Hwy. Turn left onto South Mill Street. Follow South Mill Street to Main Street. Comtrea is on the corner of Main and Mill Street.

Funding Sources: Commercial Insurance, Department of Mental Health, Grants, Mil-Tax, Managed Care, Medicaid, Medicare, Self-Pay

Counseling Resource Center
 Monica Houttuin, Julie Long, Jennifer Lowe, Jessica Gildehaus
 104 S. McKinley, Suite D
 P.O. Box 700
 Union, MO 63084
 636-583-7738
 Fax 636-583-6745

Description: Professional therapists committed to providing quality services with you and your family's personal growth in mind.

Hours of Operation: By appointment

Population Served: Children, Adults, Couples, Families

Driving Directions: Highway 50 west to Linden, right on Linden, two blocks to Locust, right on Locust, 1 block to McKinley Complex. (Complex is on East side of Union City Auditorium).

Funding Sources: Private funding, most insurances accepted (medicaid for children, HC USA, MH NET, MC PLUS), Employee Assistance Programs.

Crider Mental Health Clinic
 1032 Crosswinds Court
 Wentzville, MO 63385
 636-332-6000
 Fax 636-332-9950

Crider Center - Franklin County Mental Health Clinic
 416 Market Street
 Washington, Missouri 63090
 636-239-1717
<http://www.cridercenter.com>

Description: Counseling services for children and adults.

Hours of Operation: Wentzville: Monday - Friday, 8:30am - 5:00pm; Washington: Monday 8:30 a.m.-9:00 p.m., Tuesday-Thursday 8:30 a.m.-5:00 p.m.

Population Served: Requirements defined by the Department of Mental Health criteria for most programs. Serving Lincoln, Franklin, Warren and St. Charles counties.

Notes: Emergency Services - If you are having a mental health emergency, (for example you feel like hurting yourself or someone else) call BHR (Behavioral Health Response) 24-hour hotline immediately at (314) 469-6644 or 1-800-811-4760; for TTY call (314) 469-3638.

Department of Mental Health - Rolla Regional Center: Union Field Office
 #1 Liberty Plaza
 Union, MO, MO 63084
 636-583-8201
 Fax 636-583-9714
<http://www.dmh.missouri.gov>

Description: Service coordination for individuals with developmental disabilities.

Hours of Operation: 8:00am - 4:30pm

Population Served: Individuals with developmental disabilities, such as mental retardation, autism, cerebral palsy, etc.

Funding Sources: The State of Missouri Department of Mental Health

Eating Disorder Treatment Center of MO
 12166 Old Big Bend Road
 Ste 102
 Kirkwood, MO 63122
 1-888-822-8938
info@castlewoodtc.com
<http://www.edcmo.com/>

Description: Intensive outpatient treatment for eating disorders.

Employee Counseling Service (Provident Counseling)
 1423 S. Big Bend Blvd.
 St. Louis, MO 63117
 314-533-3800
 Fax 314-647-1762
<http://www.providentc.org>

Description: Provides outpatient mental health services, assessment, treatment and referrals to community resources for employees of business and industry.

Contact: Diane Beckerle O'Brien, Director of EAP and Workforce Services

Hours of Operation: Monday – Thursday, 8:30am – 9:00pm; Friday 8:30am – 5:00pm; and Saturday 9:00am – 5:00pm

Population Served: Employees and family members of businesses and industries who have contracts with Provident Counseling's Employee Counseling Service

Driving Directions: Locations in Downtown St. Louis, West and South St. Louis Counties, Jefferson County and Illinois

Family Resource Center
 3309 S. Kingshighway
 St. Louis, MO 63139
 314-534-9350
 Fax 314-534-3071
kvomund@frcmo.org
<http://www.frcmo.org>

Description: One of Missouri's largest family counseling agencies, specializing in the treatment child abuse and neglect.

Hours of Operation: Monday-Friday, 8:00am - 5:00pm

Population Served: Youth, parents, potential foster parents

Driving Directions: Hwy. 64/40 or Hwy. 44 to Vandeventer exit, head towards mid-town (near SLU), left on Lindell Blvd., couple of buildings down on the left

Funding Sources: United Way, special events.

Life Crisis Services, Inc. (Provident, Inc.)
1423 S. Big Bend Boulevard
Richmond Heights, MO 63117
314-647-4357
Fax 314-647-1762
<http://www.lifecrisis.org>

Description: I&R program in mental health area, including psychiatric social services, legal aid, emergency services, mental health practitioners, self-help groups, etc

Hours of Operation: Office hours: Monday - Friday, 8:00am - 5:00pm

Population Served: Persons 15 years and older.

Marillac Center
8000 W. 127th St.
Overland Park, MO 66213
816-508-3300
Fax 816-508-3321
<http://www.marillac.org>

Description: Psychiatric residential treatment center for children ages 4-17.

Hours of Operation: 24 hours a day, 7 days a week.

Population Served: Children with behavioral and/or emotional problems.

Driving Directions: Marillac is on the northwest corner of Main St. and 29th St., in the old St. Mary's Hospital building. Access is from 29th Street.

Funding Sources: Kansas Children Service League, MO Division of Family Services, Kansas Medicaid, COMBAT, Jackson County Mental Health Levy, private insurance, United Way, and private contributions.

Mental Health Association

See Health: Associations/Foundation

Metropolitan St. Louis Psychiatric Center
5351 Delmar Boulevard
St. Louis, MO 63112
314-877-0500
Fax 314-877-0553
<http://www.dmh.MO.gov/mpc>

Description: Cares for people with acute psychiatric and substance abuse problems, researches causes and treatments, and teaches individuals, families and the community.

Hours of Operation: 24 hours a day, 7 days a week

Population Served: People with acute mental illnesses

Driving Directions: From Highway 64/40 go north on Kingshighway to Delmar, West on Delmar past Union. MPC is on the right or north side of Delmar (5351 Delmar Boulevard).

Funding Sources: Missouri Department of Mental Health

Notes: Interpretive services for various languages and American sign language available.

Missouri Institute of Mental Health
 5400 Arsenal Street
 St Louis, MO 63139
 314-877-6400
 Fax 314-877-6405
<http://www.mimh.edu>

Description: Exists to conduct research that will improve services for persons served by the Department of Mental Health, to support the training of Psychiatric Residents in public psychiatry, and to foster excellence in mental health services through employee training and the study of mental health policy and ethics.

Missouri Mental Health Consumer Network
 1706 East Elm Street
 P.O. Box 297
 Jefferson City, MO 65102
 573-632-2455
 Fax 573-632-2499
dmhmail@mail.state.mo.us
<http://www.dmh.missouri.gov>

Description: Statewide consumer organizations are run by and for consumers of mental health services and promote consumer empowerment. These organizations provide information about mental health and other support services at the State level and are active in addressing and advocating for mental health system issues.

Rolla Regional Center
 105 Fairgrounds Rd
 P O BOX 1098
 Rolla, MO 65402
 573-368-2200
 Fax 573-368-2206

Description: One of 11 regional centers in the state of MO that supports people of all ages, including First Steps for birth to 3 years, with developmental disabilities and/or mental retardation by linking them to necessary community resources and services. Regional Centers are part of the Department of Mental Health, Division of Mental Retardation/Developmental Disabilities and serve approx. 35,000 Missourians through their programs and case management/service coordination system.

Hours of Operation: Monday - Friday 8:00am – 5:00pm

Population Served: Children and adults with mental retardation and/or other developmental disabilities, which have made application and have been determined eligible for Regional Center services. According to state law a qualifying individual's mental retardation must have occurred before age 18 while any other developmental disabilities must have occurred before age 22. All conditions must be expected to continue indefinitely and result in substantial limitations in two or more major life areas such as self-care, communication, learning, mobility, decision-making and/or economic self-sufficiency.

Driving Directions: Rolla Exit 184 from Interstate 44. Go East to second stop light. Turn left on Fairgrounds Rd. Turn left into driveway of Beuhler Park. Second Brick Building on the right.

Funding Sources: The Department of Mental Health, Division of Mental Retardation/Developmental Disabilities operates 3 Medicaid Waivers; Comprehensive, Community Support, and Lopez. Other sources of financial assistance may include the Medicaid State Plan, MO General Revenue, referrals to other agencies such as the Bureau of Special Health Care,

Health and Senior Services, Vocational Rehabilitation, Centers for Independent Living and Senate Bill 40 County Boards.

Supportive Community Options Program
1032 Crosswinds Court
Wentzville, MO 63385
636-978-3132

Description: Residential program for persons with a serious mental illness

Hours of Operation: Monday - Friday, 8:30am - 5:00pm

Population Served: Persons with a serious mental illness.

For more information on mental health providers -
Certified Community Mental Health Agencies Provider Directory – July 2006
Provided by the Department of Mental Health
Division of Comprehensive Psychiatric Services
<http://www.dmh.missouri.gov/cps/provider/directory.pdf>

► Special Populations

► Deaf/Blind

Missouri Deafblind Technical Assistance Project
Missouri School for the Blind
3815 Magnolia Ave
St Louis, MO 63110
314-776-4320 x 255
lrhodes@msb.k12.mo.us
<http://www.msb.k12.mo.us>

Description: Provides consultative, training, and other supports and services to individuals with deafblindness, their families, and the agencies that serve them.

Contact: Larry Rhodes, Project Coordinator

Hours of Operation: Monday – Friday 8:00 am - 4:00 pm

Population Served: Individuals with deafblindness (ages birth through 22 years), their families, and the agencies that support and/or serve them

Funding Sources: OSEP / US Department of Education

Rehabilitation Services for the Blind-St. Louis South District
2 Campbell Plaza, Suite 300
St. Louis, MO 63139
314-877-0151
Toll free 1-800-592-6004
Fax 314-877-0168
<http://www.dss.mo.gov/fsd/rsb>

Description: Provides instruction in Braille, orientation, mobility, daily living skills and transportation for persons who are blind or visually impaired

Hours of Operation: Monday - Friday, 8:00am - 5:00 pm

St. Charles County Council of the Blind
 3209 Elm Street
 St. Charles, MO 63301
 636-946-2225

Description: Sponsors activities geared toward study and action on issues related to sight loss and support of legislation of benefit to those of limited vision

Hours of Operation: Meets the 1st Monday of the month at the St. Charles senior center

Population Served: Blind or visually impaired, family or friends.

Talking Tapes: Textbooks on Tape
 16 Sunnen Drive, Suite 162
 St. Louis, MO 63143
 314-646-0500
 Fax 314-646-0555
<http://www.talkingtapes.org>

Description: An organization serving those having difficulty reading printed materials because of visual, physical, or learning disabilities.

Population Served: Those having difficulty reading printed materials because of visual, physical, or learning disabilities.

Notes: There is no annual membership or contract required and no special listening equipment needed. All textbooks are recorded on two-track cassette tapes. Talking Tapes will record any book they do not have in their library at no cost for eligible parties.

► Minorities

Accion Social Comunitaria
 3646 Fairview Avenue
 St Louis, MO 63116-4747
 314-664-5565
 Fax 314-773-0709
<http://www.asc-edu.org>

Description: To promote the social, emotional, spiritual and physical well-being of the low-income Hispanic residents of St. Louis. By educating families and children and building community, we aim for a more self-sustaining and culturally-sensitive environment for all.

Hours of Operation: Monday-Friday 9:00 am- 5:30pm

Population Served: The Hispanic/Latino community, as well as other immigrant/refugee groups, and all people without health insurance or legal documentation.

Driving Directions: One block west of Grand Blvd. and two blocks north of Gravois in south St. Louis city.

Funding Sources: U.S. Department of Education, grants from foundations and corporations, donations from churches and private individuals.

B.A.S.I.C. (Black Alcohol/Drug Service Information Center)

See Health: Substance abuse services

Catholic Family Services
 9200 Watson Rd., G101
 St. Louis, MO 63126
 314-544-3800
 Fax 314-843-0552
<http://www.cfsstl.org>

Multicultural Services

Refugee Services 2840 Wisconsin Avenue, St. Louis, MO 63118
 314-771-2570 Fax 314-771-6406 ccrsstl@prodigy.net

Provides resettlement services for newly arriving refugees in St. Louis.

Hours of Operation: 9:30 a.m.-4:00 p.m. Monday – Thursday, 9:30 a.m.-2:00 p.m. Friday

Driving Directions: From I-64 or I-44, exit onto Jefferson. Go south on Jefferson to Arsenal. Go left (East). Follow Arsenal for 4 blocks, to Wisconsin. Go left on Wisconsin and follow it to the end of the street.

Funding Sources: CCRS programs are primarily funded by the US Department of State through the United States Conference of Catholic Bishops, Migration and Refugee Services, in addition to donations from the community.

Notes: If you are an employer in the St. Louis area and are interested in hiring refugees, please contact our Job Developer for more information.

Language Access Metro Project 8050 Watson Rd., Suite 128, St. Louis, MO 63119
 314-842-0062 Fax 314-842-1303

lamp@stlouis.missouri.org

Provides services to immigrants and refugees with limited proficiency in English.

Hispanic Programs 2647 Ohio Ave., St. Louis, MO 63118
 314-773-6100 Fax 314-773-2346

La Clinica - Latino Community Health Centers
 3646 Fairview Avenue
 St Louis, MO 63116-4747
 314-352-7400
 Fax 314-773-0709
info@laclinica-stl.org
<http://www.laclinica-stl.org>

Description: Provides health care for the uninsured and under insured.

Hours of Operation: Service hours vary. By appointment only.

Population Served: Primarily, but not limited to, immigrants, refugees and migrant workers of all ages.

Driving Directions: From the west take Hwy 40/64 or Hwy 44 east to South Grand Blvd exit. Go south on S. Grand Blvd. to Fairview Avenue. Make right on Fairview, go one block. La Clinica is located one block west of S. Grand Blvd. on Fairview and two blocks north of Gravois in south St. Louis city.

Funding Sources: Private donations, foundations, churches

Missouri Office of Minority Health
 912 Wildwood Drive
 P.O. Box 570
 Jefferson City, MO 65101
 573-751-6064
 Fax 573-522-1599
<http://www.dhss.mo.gov>

Description: The Office of Minority Health, through leadership and community involvement, identify minority health issue; assist in departmental policy development; and recommend strategies to eliminate disparities in all of Missouri's minority communities.

Hours of Operation: Monday -Friday 8:00am-5:00pm

Population Served: Racial and ethnic minority populations are defined as American Indian and Alaska Native, Asian, black or African American, Hispanic or Latino, and Native Hawaiian and Other Pacific Islander.

Funding Sources: State and federal; Department of Health and Senior Services

Spanish Help Line (St. Louis and surrounding areas)
 1423 S Big Bend Blvd.
 St. Louis, MO 63117
 314-647-1150
 Fax 314-647-1762
JColeman@lifecrisis.org
<http://www.lifecrisis.org>

Description: A telephone assistance serving the Hispanic population.

Contact: Jordan Coleman, Director of Spanish Services

Hours of Operation: 9 am - 9 pm, 365 days a year

Funding Sources: United Way Venture Grant, Vincentians Grant, Daughters of Charity

► Women

Center for Women in Transition
 6400 Minnesota Ave.
 St. Louis, MO 63111-2807
 (314) 771-5207
 Fax (314) 771-0066
cwit@cwitstl.org
<http://www.cwitstl.org>

Description: Works with women who have been recently released from jail/prison and their children to assist them in making a transition back into their families and society.

Hours of Operation: Monday-Friday 8:00 am- 5:00 pm

Population Served: Women and their children.

Driving Directions: From I-44, get off at Jefferson exit, turning South. Follow Jefferson to Gravois, turn right. At first light - Ohio Street - turn right.

Funding Sources: Individual donations and private grants.

Family Planning Clinic of Franklin County
 920L St. Clair Plaza Drive
 St. Clair, MO 63077
 636-629-0300
 Fax 636-629-0300

Description: Affordable birth control for all women.

Hours of Operation: Monday-Friday 8:30am-4:30pm; evening hours available by appointment every Tuesday

Driving Directions: From junction of Hwy 47 and I44, South towards St. Clair, pass McDonald's and Hardies to St. Clair Plaza Drive, turn right in front of Farmers and Merchants Bank.

Funding Sources: Public funds, patient fees, and donations.

La Leche League International
 10 Wickford Court
 St. Charles, MO 63301
 314-424-3900
 lalechedeb@aol.com
<http://www.LaLecheLeague.org>

Description: Nonprofit nonsectarian organization dedicated to providing education, information, support, and encouragement to women who want to breastfeed.

Hours of Operation: Mon. - Sun., 8:00am - 10:00pm; Hours of telephone help line to any breastfeeding woman and health care provider.

Missouri Women's Council
 Department of Economic Development
 PO Box 1684
 301 W. High St., Suite 680
 Harry S. Truman Office Building
 Jefferson City, MO 65101
 573-751-0810
 Toll free 1-877-426-9284
 Fax 573-522-5005
 wcouncil@ded.mo.gov
www.womenscouncil.org

Description: Providing Missouri women the information necessary to obtain economic, social and political parity.

Hours of Operation: Monday -Friday, 8:00am-5:00pm.

Funding Sources: Friends of the Missouri Women's Council accept donations in order to support the programs funded through the Missouri Women's Council.

Show Me Healthy Women
 Bureau of Cancer and Chronic Disease Control
 920 Wildwood
 Jefferson City, MO 65102
 573-522-2844
 Fax 573-522-2899
<http://www.dhss.mo.gov/BreastCervCancer>

Description: Lifestyle education and health screening for women to help prevent heart disease, breast and cervical cancer.

Population Served: Women (must meet income guidelines)

Women's Center - Troy Satellite Office (BCS)
 481 Main, Suite 3
 Troy, MO 63379
 636-528-2466

Description: Provides individual and group support for domestic violence victims
Hours of Operation: Must make an appointment; Group times yet to be scheduled
Population Served: Persons age 17 and older.

Women's Center (BCS)
 * Confidential Location *
 St. Charles, MO 63301
 636-946-6854

YWCA Women's Resource Center
 140 N. Brentwood Boulevard
 St. Louis, MO 63105
 314-726-6665
 Fax 314-727-1372

Description: Offers a variety of support groups for sexually abused women, divorced women, single parents and other groups formed as needed; led by licensed therapists
Hours of Operation: Monday - Thursday, 8:30am - 8:30pm; Friday, 8:30am - 6:00pm; Saturday, 9:00am - 12:00pm; Additional evening hours are available as needed
Population Served: Serves primarily women and teens.

► Other

Department of Veterans Affairs
 400 S. 18th St
 St. Louis, MO 63103
 Toll free 1-800-827-1000
 Fax 314-552-9715
<http://www.va.gov>

Description: Provides assistance and information about home loans, education, life insurance, vocational rehabilitation, compensation and pension, health care program, burial and memorial benefits, survivor's benefits, and pharmacy benefits.

Hours of Operation: Monday – Friday, 8am - 4 pm

Population Served: Veterans, service members and their families.

Driving Directions: From I-44, take the I-55 N exit (exit 290A) on the left toward I-70 east / Illinois. Take exit 290B on the left toward 18th St. Keep right at the fork to go on Lafayette Ave. Turn left onto Truman Pkwy and follow for approximately ½ mile Turn left onto Chouteau Ave. Immediately turn right onto S 18th St. and follow under the bridge 400 S 18th St will be a brick building on the right.

Fathers Support Center St. Louis
 4411 N. Newstead (lower level)
 St. Louis, MO 63115
 314-333-4170 x 103
 Fax 314-333-4322

<http://www.fatherssupportcenter.org>

Description: Helping to support fathers who are unemployed or underemployed in order to impact the outcomes for these fathers and their children.

Good Samaritan Service Center for the Homeless
 2108 Russell Boulevard
 St. Louis, MO 63104-2607
 314-772-7720
 Fax 314-772-8980
goodsam@stl.unitedway.org

Description: Transitional housing program and services for the homeless.

Hours of Operation: Monday - Thursday 7:30am – 5:00pm ; Friday 7:30am - 4:30pm

Driving Directions: Two blocks east of Jefferson. On the corner of McNair and Russell. In the Soulard area.

Notes: Must be referred from a shelter or the HRC. All must be drug and alcohol free, and must agree to remain so. Required: birth certificates, photo ID, proof of all sources of income, police check, Social Security cards, past utility bills and debts.

International Ventilator Users Network (IVUN)
 c/o Post-Polio Health International
 4207 Lindell Blvd #110
 St Louis, MO 63108-2915
 314-534-0475
 Fax 314-534-5070
ventinfo@post-polio.org
<http://www.post-polio.org/ivun>

Description: Information referral

Hours of Operation: Monday-Friday 8:00am-5:00pm

Judevine Center for Autism
 1101 Olivette Executive Parkway
 St. Louis, MO 63132
 314-432-6200
 Fax 314-432-8894
judevine@judevine.org
<http://www.judevine.org>

Description: Conducts formal evaluations and makes recommendations regarding appropriate programming and placement to suit the particular needs of the adult or child.

Hours of Operation: Monday - Friday, 8:00am - 5:00pm

Population Served: Individuals with Autism Spectrum Disorders and their families. Age 1 through adulthood.

Driving Directions: Located just west of I-170 in Olivette MO. Or East of I-270 on Olive Street Road.

Funding Sources: Funding is provided through the State Department of Mental Health, Local Senate Bill 40 boards, United Way, MO Foundation for Health, grants and fundraising.

McAuley Clinic
851 East 5th St., Ste.
Washington, MO 63090
Children's Health 636-239-8585
Women's Health 636-239-8656
Fax 636-239-8553

Description: Clinic for Pediatrics, Women's Services, Adult Medicine. Accepts Medicaid, HCUSA, Mercy MC+, Sliding Fee Scale

Hours of Operation: Monday – Friday 8:00am-4:00pm

Population Served: Underserved; Medicaid Eligible

Driving Directions: In Washington, MO., at the intersection of Highway 47 and 5th Street. Across Highway 47 from St. John's Mercy Hospital; located in the Medical Office Building, which has its own parking lot between 3rd and 5th street west of Highway 47.

Funding Sources: Owned by St. John's Mercy Hospital.

McCallum Place
100 S. Brentwood Blvd Ste 350
Clayton, MO 63105
314-863-7700
Fax 314-863-7701
info@mccallumplace.com
<http://www.mccallumplace.com>

Description: Provides comprehensive medical and psychiatric care, specialized psychotherapies and nutritional support for patients with eating disorders.

Hours of Operation: Administrative Hours: Monday - Friday 8:00am – 7:00pm

Population Served: McCallum Place serves men and women aged 13 to 50 who suffer from bulimia nervosa, anorexia nervosa, binge eating or compulsive exercise. Any individual who requires intensive treatment, structure, and support to make progress would benefit from our programs.

Missouri Re-Entry Process (MRP)
2729 Plaza Drive
Jefferson City, MO 65102
573-526-1664
Fax 573-526-1664
reentry@doc.mo.gov

<http://www.doc.missouri.gov/reentry/MissouriReentryProcess.htm>

Description: Prepares offender for re-entry to the community from the prison setting.

Population Served: Persons convicted of RSMo felony charges, under the supervision of the Department of Corrections being housed in one of the correctional sites or under supervision of the Division of Probation and Parole.

Missouri Veterans Commission
 400 S. 18th Street, Room 107
 St. Louis, MO 63103
 314-589-9885
 Toll free 1-866-38-4636
 movets@mvc.dps.mo.gov
<http://www.mvc.dps.mo.gov>

Description: Assists veterans and their dependents in securing federal and state benefits.

Hours of Operation: Monday - Friday, 7:45am - 4:15pm; service officers frequent Franklin County – call 636-583-6311 or 573-468-4012.

Population Served: Veterans of all wars and their dependents. Persons age 16 and older.

Missouri Veterans Home
 10600 Lewis & Clark Boulevard
 St. Louis, MO 63136
 314-340-6389
 Fax 314-340-6388
 movets@mvc.dps.mo.gov
http://www.mvc.dps.mo.gov/MVH_home.htm

Description: Assists veterans of all wars and their dependents in securing federal and state benefits.

Hours of Operation: Office hours: Monday - Friday, 8:00am - 4:00pm

Population Served: Veterans of all wars and their dependents.

Prisoner Family Services of Lutheran Ministry Association

See Health: Associations

Special Olympics MO - East Area
 2510 S. Brentwood Blvd., Suite 220
 St. Louis, MO 63144
 314-961-7755
 Fax 314-961-0660
<http://www.somo.org>

Description: A year-round sports organization for individuals eight years and older with mental handicaps or other closely-related developmental disabilities.

Hours of Operation: Monday - Friday, 8:00am- 4:30 pm.

Funding Sources: Grants, sponsorships and private donations.

Whiteman AFB, MO (ACC) Family Support Center
 750 Arnold Avenue
 Whiteman AFB, MO 65305-5004
 660-687-7132

► Self-Help Groups

Al-Anon/Alateen Family Groups Information Center
2683 S. Big Bend, Room 17 (2nd floor)
Maplewood, MO 63143
314-645-1572

Description: Support group for friends, children (8-20) and other relatives of alcoholics; variety of meetings scheduled at different times throughout the community.

Hours of Operation: Monday - Friday, 8:30am - 4:00pm

Population Served: For issues related to alcoholism only; not other issues such as drugs/gambling. Children 8-20 and older.

Alcoholics Anonymous
2683 Big Bend Boulevard Room 4
St. Louis, MO 63143
314-647-3677
Fax 314-647-2907
<http://www.aastl.org>

Description: Organization of people for whom alcohol has become a problem and who are working together to overcome the disease.

Hours of Operation: Monday - Friday, 8:30am - 5:00pm; 24-hour phone service

Population Served: People for whom alcohol has become a problem.

Driving Directions: Central services is at the corner of Manchester and Big Bend. There are several meeting locations throughout the metro area.

Funding Sources: Self supporting through our own contributions.

Bereaved Parents of the USA - St. Louis Chapter
P.O. Box 410350
St. Louis, MO 63141
314-878-0890
<http://www.bpustl.org/>

Description: Self-help support group for bereaved parents, siblings or grandparents.

Hours of Operation: Meets the third Tuesday of every month, 7:00 p.m., at the Washington Ambulance District Building, 515 Washington Ave. (at 5th & Washington, behind Rothschild's Restaurant) in Washington; call 636-583-0661 or 636-239-6098 for more information about this location. Call St. Louis number for information on other meeting times and locations.

Narcotics Anonymous
P.O. Box 596
St. Charles, MO 63301
Helpline 636-946-5650
Info@showmerso.org
<http://www.showmerso.org>

Description: Self-help, self-supporting program for persons desiring to stop using drugs and alcohol.

Hours of Operation: 24-hour answering service; meetings held day & night throughout community

Recovery, Inc.
 PO Box 555
 Meetings are held on Washington Avenue.
 Union, MO 63084
 636-583-2408
<http://www.recovery-inc.org>

Description: Self-help mental health through will training.

Hours of Operation: Tuesday 7:00 pm-9:00 pm; Thursday 11:15 am-1:15 pm

Population Served: 18 years or older

Driving Directions: Highway 50 to Oak Street, downtown to courthouse, left to Fricks (on Washington Avenue).

Funding Sources: Free-will offerings and donations.

Notes: Fees for services: free - but good will offering of \$3.00 or more per meeting.

Recovery, Inc.
 St. Louis, MO 63136
 314-770-9865

Description: Self help mental health through will training

Hours of Operation: Monday-Friday Two hour meetings at eight different locations and times.

Population Served: 18 years or older

Funding Sources: Free-will offerings and donations.

Notes: The Recovery Method is an adjunct to Professional mental health care. All group leaders are volunteers that have experienced some form of mental health problems and have been helped by the Recovery Method through practice and training.

Self Help for Hard of Hearing People/Cochlear Implant Association, Inc.
 Gateway Chapter
 Kirkwood Community Center
 111 S. Geyer
 Kirkwood,, MO 63122
 636-946-2123
marizo491@charter.net

Description: Self help group for people with hearing loss

Hours of Operation: We meet on the Second Saturday of the month at 1:00 pm at the Kirkwood Community Center in Kirkwood, MO except for January and August. We have a picnic in June.

Driving Directions: Take 270 to Manchester (East) to Geyer Rd (South)

Funding Sources: Association fees of \$12.00 a year which includes a monthly newsletter

Notes: Mailing address is to chairman's home address not Kirkwood Community Center. Please contact chairperson for more information.

► Senior Services

A Place for Mom
 1446 Heritage Landing, Suite 107
 St. Charles, MO 63303
 636-498-0868
 Toll Free 1-866-311-3239
 advisor@aplaceformom.com
<http://www.aplaceformom.com>

Description: A free referral service helping families find nursing homes, assisted living, Alzheimer's care, retirement communities, and home care.

Population Served: Elderly and their families.

AARP Information Center
 8059 Watson Rd.
 St. Louis, MO 63119
 314-918-7563

Description: Provides a variety of services to the senior population from tax aid to safe driving classes.

Hours of Operation: 9:00am- 3:30pm. Monday -Friday.

Population Served: Seniors in the St. Louis Metropolitan Area

AARP Tax-Aide MO
 15631 Summerridge Drive
 Chesterfield, MO 63017
 636-532-5202

<http://www.aarp.org/taxaide/about.html>

Description: Free service which prepares tax returns and answers tax questions.

Hours of Operation: Usually by appointment after January 30.

Population Served: Low to middle income, emphasis on over 60.

Cardinal Ritter Senior Services
 7601 Watson Road
 St. Louis, MO 63119
 314-961-8000
<http://www.ccstl.org/crss>

Description: Social services and housing for low-income seniors.

Hours of Operation: 8:30am - 5:00pm Monday - Friday

Driving Directions: Numerous locations throughout the St. Louis Area

Funding Sources: HUD, United Way, Catholic Charities, individual and corporate contributions.

CLAIM Program - Missouri State Health Insurance Assistance Program
 200 North Keene St.
 Columbia, MO 65201
 573-817-8300
 Fax 573-817-8330
 Toll free 1-800-390-3330
<http://www.missouriclaim.org>

Description: Free medicare and health insurance counseling services for medicare beneficiaries, their families and caregivers.

Hours of Operation: 9:00am – 4:00pm Monday – Friday except for holidays

Population Served: Medicare beneficiaries, their family members, caregivers and aging advocates. Those age 65 or older or under age 65 that have been declared disabled by the Social Security Administration. Service available throughout Missouri.

Funding Sources: Funding is received through a grant from the Centers for Medicare and Medicaid Services, the Federal Medicare Agency, and is administered through the Missouri Department of Insurance. We receive additional funds through a private grant from the Missouri Foundation for Health, a philanthropic organization whose mission is to improve the health of people in the community it serves.

Gerald Senior Center (MEAAA)

731 S. Main

Gerald, MO 63037

573-764-2256

<http://www.mid-eastaaa.org/fcounty.html>

Description: Offers home-delivered meals to eligible homebound elderly.

Hours of Operation: Monday - Friday, 9:00am - 3:00pm; Lunch served 11:30am - 12:30pm

Population Served: Must meet certification criteria and be homebound. Elderly.

Mid-East Area Agency on Aging - Union

500 East Locust

Union, MO 63084

636-583-8919

Toll free 1-800-AGE-6060

mounionctr@sbcglobal.net

<http://www.mid-eastaaa.org/>

Contact: Linda Metcalf, I & A Specialist

Hours of Operation: Monday - Friday, 7:30am- 4:30pm

Missouri Department of Health and Senior Services

Division of Disability and Senior Services

Region 5

1 Liberty Plaza

Union, MO 63084

636-583-2419

Hotline 800-392-0210

www.dhss.state.mo.us

Description: Assists elderly and disabled to live as independently as they can.

Hours of Operation: Monday-Friday 8:00am-4:00pm

St. Clair Senior Center (MEAAA)

510 Park Avenue

St. Clair, MO 63077

636-629-2187

Description: Offers educational, recreational and health programs, I&R, outreach, telephone reassurance, volunteerism & other activities for persons 60 and older

Contact: Judith Baumgarth, Senior Center Administrator

Hours of Operation: Monday - Friday, 8:30am - 3:30pm; Lunch served 11:30am - 12:30pm

Population Served: Persons 60 and older.

Sullivan Senior Center (MEAAA)
 Community Center, Sappington Bridge Road
 Sullivan, MO 63080
 573-468-3766

Description: Offers educational, recreational and health programs, I&R, outreach, telephone reassurance, volunteerism & other activities for persons 60 and older

Hours of Operation: Monday - Friday, 9:00am - 3:00pm; Lunch served 12:00pm - 1:00pm

Population Served: Persons 60 and older.

Union Senior Center (MEAAA)
 501 E. Main Street
 Union, MO 63084
 636-583-5432

Description: Offers educational, recreational and health programs, I&R, outreach, telephone reassurance, volunteerism & other activities for persons 60 and older

Hours of Operation: Monday - Friday, 8:30am - 4:30pm; Lunch served 11:45am - 1:00pm

Population Served: Persons 60 and older.

Washington Senior Center (MEAAA)
 Municipal Auditorium, 2nd & High Sts.
 Washington, MO 63090
 636-239-3374

Description: Offers educational, recreational and health programs, I&R, outreach, telephone reassurance, volunteerism & other activities for persons 60 and older

Hours of Operation: Monday - Friday, 8:00am - 3:00pm; Lunch served 11:30am - 12:30pm

Population Served: Persons 60 and older.

► Youth Services

Big Brothers Big Sisters of Eastern Missouri
 4625 Lindell Blvd., Suite 501
 St. Louis, MO 63108
 314-361-5900
 Fax 314-361-4484
 info@bbbsemo.org
<http://www.bbbsemo.org/>

Description: Matches adult volunteers with children ages 5 to 17.

Hours of Operation: Monday - Friday 8:00am- 5:00pm

Population Served: Youth ages 5 to 17 years old

Driving Directions: Highway 64/40, exit Kingshighway. Kingshighway to Lindell.

Funding Sources: Foundation and government grants, individual contributions, United Way and special events.

Boy Scouts of America - Greater St. Louis Area Council
 4568 West Pine Boulevard
 St. Louis, MO 63108
 314-361-0600
 Toll Free 800-392-0895
 Fax 314-361-5165
<http://www.stlbsa.org>

Description: Non-profit youth organization

Hours of Operation: Monday – Friday 8:30am – 5:00pm; Scout shop open Monday - Friday 9:00am - 6:00pm

Population Served: Boys (ages 7-20) and young men and women (ages 14-20)

Funding Sources: Our council is a non-profit organization under Section 501(c)(3) of the Internal Revenue Code and is funded by many different sources. These sources provide needed income to support the 62,306 youths that we serve full time. Our college-educated and trained professional staff manages more than 18,000 volunteers annually to provide leadership development, operation of council facilities and needed specialized programs at a cost of \$80 per youth member. We receive income from ten areas: annual Friends of Scouting campaign, project sales, special events, sale of supplies, corporations and foundations, product sales, activities, outdoor educational environmental facilities, United Way and investments.

Expenses for 2000 break down functionally as: 79.7% for program expenses, 6.9% for fund-raising expenses and 13.4% for administration expenses. These percentages are based upon time studies. Our volunteer Executive Board commissions and reviews an independent audit of the council's financial records and internal controls each year, as part of our policy of solid fiscal management.

Notes: BSA Camps in the area include: S-F Scout Ranch 573-756-5738; Beaumont Scout Reservation 636-938-5444; and Camp Lewallen 573-224-3420

Boys and Girls Club of St. Charles County
 1400 Olive Street
 St. Charles, MO 63301
 636-724-3380
 Fax 636-724-7919
<http://www.bgca.org/>

Description: Nonprofit agency that serves youth between the ages of 8 & 18 years of age with athletic, social and development programs. Locations in St. Charles, St. Peters and St. Louis.

Hours of Operation: Monday - Friday, 2:30pm - 9:00pm and Saturday, 10:00 am-4:00pm; Summer hours: 10:00am - 4:00pm, Monday – Friday

Boys and Girls Club - West St. Charles County Unit
 1 Club Way
 St. Peters, MO 63376
 636-240-9150

Hours of Operation: Monday - Friday, 2:30pm - 9:00pm, and Saturday 10:00am - 4:00pm; Summer hours are 10:00am - 4:00pm Monday -Friday; Closed weekends

Boys and Girls Town of Missouri
 4485 Westminster Place
 St. Louis, MO 63108
 314-535-7911
 Fax 314-535-6632
 stlouisadmissions@bgtm.org
<http://www.bgtm.org/>

Description: A resident treatment facility for children who have been abused or neglected.

Bureau of Special Health Care Needs
 Department of Health and Senior Services
 220 S. Jefferson Avenue
 St. Louis, MO 63103
 314-877-2850
 Fax 314-877-2838
<http://www.dhss.mo.gov/SHCN>

Description: Provides diagnostic, preventive and specialized medical care to MO children with defects which hinder normal growth and development.

Hours of Operation: Monday - Friday, 8:00am - 5:00pm

Population Served: Must meet medical and financial eligibility guidelines established by MOBSHCN. Persons up to age 21.

Children's Advocacy Center of East Central MO
 20 Hughes Ford Road, Suite 5, Sullivan
 573-468-2271(S)
 Fax 573-468-2453
<http://comtrea.org/cac.html>

Description: Child-focused program which serves as a community resource and supports agencies that respond to child abuse.

Hours of Operation: Monday - Friday 8am-5pm or by appointment.

Population Served: Children ages 3-17 living in the service area described.

Driving Directions: I-44 exit 225, right on Springfield, left on Elmont, left on W. Main, right on Hughes Ford Road.

Funding Sources: State funding, grants, private donations, and fundraisers.

Notes: Referrals for forensic interviews are taken from law enforcement, Children's Division, and juvenile office.

Children's Home Society of Missouri
 9445 Litzsinger Road, Brentwood, MO 63144
 314-968-2350
 Fax 314-968-4239
 2424 Muegge Rd., St. Charles, MO 63303
 636-940-1119
<http://www.chsmo.com>

Description: Provides adoption services for infants and older children as well as international adoptions, and long- and short-term care for non-ambulatory children with developmental disabilities and medical needs.

Hours of Operation: Evening hours by appointment; office hours Monday - Friday, 8:30am - 4:30pm; staff available in emergency. Short term and Residential services available 24 hours per day, 365 days per week. Intake must be scheduled in advance.

Population Served: Children ages 0 - 21. Women experiencing unplanned pregnancies. Adoptive parent must be at least 21 years of age.

Funding Sources: State of Missouri, city and county funding, private pay, fund raising.

Citizens for Missouri's Children
One Campbell Plaza, Suite 2A
St. Louis, MO 63139
314-647-2003
Fax 314-644-5437
cmchild@mokids.org
<http://www.mokids.org/>

Description: Advocacy organization on behalf of our state's children with the goal of improving services for them.

Hours of Operation: Monday - Friday, 8:30am - 5:00pm

Cornerstone
316 Jefferson Street
St. Charles, MO 63301
636-946-2814
<http://youthinneed.org>

Description: Home for neglected/abused girls ages 12-19; a service of Youth in Need.

Hours of Operation: Office hours: Monday - Friday, 9:00am - 5:00pm

Delta Gamma Center for Children with Visual Impairments
5030 McRee Avenue
St. Louis, MO 63110
314-776-1300
Fax 314-776-7808
info@dgckids.org
<http://www.dgckids.org>

Description: Provides individualized education, therapy and support services to children birth to three, who are blind or visually impaired, and their families.

Hours of Operation: Monday - Friday, 8:30am - 4:30pm

Population Served: Children from infancy to high school, and their families.

Driving Directions: Hwy 40 to Kingshighway, Kingshighway South to McRee; I-44 to Kingshighway, Kingshighway North to McRee.

Funding Sources: State funds, public and private grants, The United Way of Greater St. Louis Variety Club, St. Louis Office of MRDD and PLB, and Individual donations.

Evangelical Children's Home
8240 St. Charles Rock Road
St. Louis, MO 63114
314-427-3755
Fax 314-426-0764

<http://www.newbeginnings-ech.org>

Description: Provides a variety of services to troubled youth and their families.

Driving Directions: 1/4 mile east of Highway I-170 on St. Charles Rock Road.

Funding Sources: Funded through purchase of service agreements with MO state agencies, such as the Division of Family Services and through fund raising activities.

First Steps - East Central SPOE

102 S. McKinley
Union, MO 63084
636-584-7279
1-866-583-2392

<http://dese.mo.gov/divspeced/FirstSteps>

Description: A support and service system designed for infants and toddlers with special needs. First Steps is designed to improve the family capacity for enhancing their child's development and learning; to provide families the tools they need to help their child be successful; to increase the child's participation in family and community life.

Population Served: Children birth to 3 years old who have a significant developmental delay or a diagnosed physical or mental condition associated with developmental disabilities and their families.

Franklin County 4-H Clubs

116 W. Main Street
Union, MO 63084
636-583-5141
Fax 636-583-5145

HilemanD@missouri.edu

<http://extension.missouri.edu/franklin/>

Description: 4-H Clubs and programs are open to young people ages 5-18. There are clubs in most Franklin County communities. 4-H is the Youth Development branch of University of Missouri Extension.

Contact: Dave Hileman, 4-H Youth Specialist

Hours of Operation: University of Missouri Extension office is open from 8:00 am -4:30 pm, Monday - Friday.

Population Served: Youth, volunteers, parents, teens, families, seniors, home schoolers
From Highway 50: Turn North on Oak Street at the stoplight by Hardee's. Turn left on Main Street.

Funding Sources: Franklin County 4-H programs are funded through donations, fundraisers, and some clubs receive funds from the Washington Area United Way. University of Missouri Extension funding (4-H staff salaries, office space and expenses) comes from USDA, University of MO, and Franklin County.

Girl Scout Council of Greater St. Louis

2130 Krakty Road
St. Louis, MO 63114
314-890-9569
Toll Free 800-727-4475
Fax 314-890-0645

<http://www.gscgsl.org>

Description: Youth program for girls and young women, ages 5-17, to develop skills, values, and ideals to reach their fullest potential and become caring, competent and contributing members of society. The St. Louis council is the largest in the US and features three resident camps - Camp Cedarledge, Camp Fiddlecreek, and Camp Tuckaho. Traditional troop meetings and activities, in-school programs, and programs for those who do not have a troop in the area.

Jefferson/Franklin Community Action Head Start - Franklin County
 3251 Hwy MM
 Gray Summit, MO 63039
 636-742-4660 ext 113
 Fax 636-451-0022
 sswisshelm@jfcac.org
<http://www.jfcac.org>

Description: Federally funded educational enrichment program for ages 3-5 years.

Contact: Sue Swisshelm, Family Partnership Coordinator

Hours of Operation: Office hours: Monday - Friday 8:30am- 4:30pm. See each center for school hours.

Population Served: Low income families with three to five year old children.

Notes: Centers also in Hillsboro, Catawissa, Leslie, St. Clair, Sullivan, Union and Robertsville.

Nurses for Newborns
 9505 Gravois, Suite 200
 St. Louis, MO 63123
 314-544-5900

Description: Care for at risk newborns.

The Ellis Foundation
 P.O. Box 54
 Wall Street & Judson
 Fort Scott, KS 66701
 620-223-2232
 Fax 620-223-2236

chris@theellisfoundation.org

<http://www.theellisfoundation.org>

Description: We provide scholarships to high school seniors from low to medium income families in rural America, with an emphasis on single parent families.

Contact: Chris Ellis, Director

Hours of Operation: Monday-Friday 8:00am-5:00pm

Population Served: Low to medium income families in rural America, with an emphasis on single parent families.

Funding Sources: The Ellis Family endowment and other scholarship sponsors throughout Kansas and Missouri. Some institutions participate with us as well.

The Walker Scottish Rite Clinic for Childhood Language Disorders, Inc., (St. Louis)
 3633 Lindell Boulevard
 St. Louis, MO 63108
 314-533-7415
 Fax 314-533-7503
kidtalk@srclinic.org
<http://www.srclinic.org>

Description: The clinic provides speech and language services to children ages 2-6.

Hours of Operation: Monday - Friday, 8:00 - 4:30

Population Served: Children ages 2-6

Driving Directions: Hwy 40 or I-44 to north on Grand. West on Lindell 1/2 block to 3633 Lindell. Clinic is located inside the Scottish Rite Cathedral.

Funding Sources: Funding comes from special events, grants and donations from corporations and foundations, and individual gifts.

United Services for the Handicapped
4140 Old Mill Parkway
St. Peters, MO 63376
636-926-2700
Fax 636-447-4919
lkohrs@unitedsvcs.org

Description: Educational and therapeutic services for children with special needs

Hours of Operation: Monday - Friday, 8:00am - 5:00pm

Population Served: Preschool-age children. Children from 6 weeks through kindergarten age.

Driving Directions: Near Mexico/Jungerman

Funding Sources: Developmental Disabilities Resource Board, United Way, Fort Zumwalt, St. Charles, Orchard Farm School Districts, program fees, community donations

Alphabetical Listing of Resources

A Place for Mom.....	71
AARP Information Center.....	71
AARP Tax-Aide MO	71
A.L.I.V.E. - Alternatives to Living In Violent Environments.....	24
Ability Network	10
Accion Social Comunitaria	61
ACS Hope Lodge Center of St. Louis.....	48
Adapt-Ability, Inc.	10
Adult Basic Education/GED Program	19
Adult Day Services Center (UMSL).....	9
Agape Christian Care Center	29
Agape Help House of Pacific.....	29
Al-Anon/Alateen Family Groups Information Center	69
Alcoholics Anonymous	69
Alexian Brothers Salus Place	44
Alliance for the Mentally Ill - NAMI St. Louis	54
Alzheimer's Association	36
American Cancer Society-St. Louis Metro	36
American Diabetes Association.....	36
American Heart Association, Greater St. Louis Division	36
American Heartland Hospice	46
American HomeCare Management.....	46
American Lung Association of Eastern MO.....	37
American Red Cross, St. Louis Area Chapter.....	30
Annie Malone Children and Family Service Center.....	9
Appellate - Post-Conviction District Office.....	6
Arizona Care Center.....	49
Arthritis Foundation, Eastern MO Chapter	37
Asthma and Allergy Foundation of America - St. Louis Chapter	37
Auxiliary Hospital Hospitality House at St. Louis University Hospital	48
B.A.S.I.C. (Black Alcohol/Drug Service Information Center)	52
Behavioral Health Response.....	24/54
Bereaved Parents of the USA - St. Louis Chapter	69
Better Business Bureau.....	1
Big Brothers Big Sisters of Eastern Missouri.....	73
BJC Home Care Services	47
Board of Probation and Parole District 16.....	6
Boonslick State School.....	14
Boy Scouts of America - Greater St. Louis Area Council,	74
Boys and Girls Club of St. Charles County	74
Boys and Girls Club - West St. Charles County Unit.....	74
Boys and Girls Town of Missouri.....	75
Brain Injury Association of Missouri, St. Louis Chapter and State Association.....	37
Bridgeway Counseling Service.....	55
Bristol Manor of Pacific.....	49
Bristol Manor of Washington	49
Bureau of Special Health Care Needs - Department of Health and Senior Services.....	75

Cardinal Ritter Senior Services	71
Catholic Charities - Archdiocese of St. Louis	
<i>Housing Resource Center</i>	48
<i>Catholic Legal Assistance Ministry (CLAM)</i>	7
<i>St. Patrick Center</i>	30
Catholic Family Services	
Multicultural Services	
<i>Refugee Services; Language Access Metro Project; Hispanic Programs</i>	62
Mental Health Services and Substance Abuse	
<i>Family Wellness</i>	55
Cedarcrest Manor	49
Center for Hearing-Speech, St. Louis/St. Charles County	10
Center for Innovations in Education (CISE)	19
Center for Women in Transition	63
Center on Adolescent Sexuality, Pregnancy and Parenting—CASPP	19
Child Day Care Association.....	9
Children's Advocacy Center of East Central MO	75
Children's Home Society of Missouri.....	75
Christian Psychological and Family Services (Counseling)	55
Citizens for Missouri's Children	76
CLAIM Program - Missouri State Health Insurance Assistance Program	71
Community Health In Partnership (CHIPS)	30
Community Outreach	25
Community Psychological Service	55
Community Treatment, Inc. d/b/a Comtrex, Inc.	56
Consumer Debt Counseling, Inc./ClearPoint Financial Solutions, Inc./ Consumer Credit Counseling Service	1
Cornerstone	76
Cornerstone Christian Academy	14
Counseling Resource Center	56
Crider Mental Health Clinic.....	56
Crider Center - Franklin County Mental Health Clinic	56
Crisis Nursery St. Charles	25
Crosspoint Christian School	14
Crossroads Program	52
Cystic Fibrosis Foundation-Gateway Chapter.....	38
Delta Gamma Center for Children with Visual Impairments.....	76
Department of Conservation, Metro St. Louis Office.....	1
Department of Mental Health - Rolla Regional Center: Union Field Office	57
Department of Veterans Affairs	65
Directory of Missouri Foundations.....	1
Division of State Parks	2
Division of Vocational Rehabilitation - St. Louis South.....	28
Doorways	44
Earth Share of MO	2
East Central College	14
Easter Seals MO (Corporate Office)	38
East-West Gateway Coordinating Council	2
Eating Disorder Treatment Center of MO.....	57

Emmaus Homes.....	11
Employee Counseling Service (Provident Counseling).....	57
Epilepsy Foundation of the St. Louis Region	38
Evangelical Children's Home	76
Exceptional Equestrians of the Missouri Valley, Inc.....	11
Families for Home Education, Region 5.....	20
Family Planning Clinic of Franklin County.....	64
Family Resource Center.....	57
Fathers Support Center St. Louis.....	65
First Steps - East Central SPOE	77
Four Rivers Branch - YMCA of Greater St. Louis.....	2
Franklin County R-II School District	14
Franklin County 4-H Clubs	77
Franklin County Area United Way	3
Franklin County CASA Inc.....	7
Franklin County Department of Health	31
Franklin County Master Gardeners	20
Franklin County Public Defender.....	7
Franklin County University of Missouri Extension Center	20
Gerald Area Chamber of Commerce.....	3
Gerald Nursing & Rehab	49
Gerald Senior Center (MEAAA)	72
Girl Scout Council of Greater St. Louis	77
Good Samaritan Service Center for the Homeless	66
Grandview Healthcare Center	49
Habitat for Humanity of Franklin County, Inc.....	31
Hannibal Council on Alcohol and Drug Abuse	53
Happy Acres Retirement Home.....	49
Harmony Health Plan	31
Harmony House	31
HealthCare USA (Eastern MO)	32
Huntington's Disease Society of America- St. Louis Chapter	38
Immaculate Conception School.....	14
Immanuel Lutheran School	15
International Ventilator Users Network (IVUN).....	66
Jefferson Franklin Community Action Corporation.....	32
Jefferson/Franklin Community Action Head Start - Franklin County	78
Judevine Center for Autism.....	66
Juvenile Diabetes Research Foundation.....	39
KUTO - Kids Under Twenty One	25
La Clinica - Latino Community Health Centers	62
La Leche League International.....	64
Lakewood Care Center	50
Leftovers, etc. St. Charles.....	3

Legal Advocates for Abused Women	7
Legal Services of Eastern Missouri (St. Louis).....	7
Legal Services of Eastern Missouri, Inc. (Union)	8
Lens Crafters Foundation.....	39
Leukemia Society of America, Inc.–Gateway Chapter	39
Life Care Center of Sullivan	50
Life Crisis Services, Inc. (Provident, Inc.).....	58
Life Skills (St. Louis Metro Area)	12
Literacy Council of East Central Missouri.....	20
Lonedell R-XIV School District	15
Loving Hearts Outreach	32
Lupus Foundation of America, MO Chapter.....	39
Lutheran Family and Children's Services of Missouri	32
March of Dimes, Greater St. Louis Chapter	340
Marillac Center	58
McAuley Clinic.....	67
McCallum Place	67
MedWise Patient Assistance Program	3
Mental Health Association (MHA) of Greater St. Louis	40
Meramec Community Mission	33
Meramec Nursing Center	50
Meramec Valley Christian School	15
Meramec Valley R-III School District	15
MERS/Missouri Goodwill Industries - Franklin County.....	12
Metro St. Louis HIV Health Services Planning Council.....	45
Metropolitan Center for HIV/AIDS Services	45
Metropolitan Employment and Rehabilitation Service.....	12
Metropolitan St. Louis Psychiatric Center	58
Mid-East Area Agency on Aging – Union	71
Mid-Missouri Crisis Line	26
Missouri AIDS Drug Assistance Program- Missouri Department of Health and Senior Services.....	45
Missouri Alternatives Center	21
Missouri Baptist Hospital of Sullivan	46
Missouri Career Center	28
Missouri Chapter of the National Neurofibromatosis Foundation.....	40
Missouri Child Care Resource and Referral Network.....	9
Missouri Council for In-Home Services	40
Missouri Deafblind Technical Assistance Project.....	60
Missouri Department of Health, WIC.....	33
Missouri Department of Health and Senior Services- Division of Disability and Senior Services	12/72
Missouri Department of Health and Senior Services- Office of Minority Health.....	63
Missouri Dept. of Labor and Industrial Relations- Division of Employment Security.....	29
Missouri Department of Social Services- Children's Division.....	33
Missouri Department of Social Services- Family Support Division - Franklin County Office.....	33

Missouri Department of Social Services- Division of Youth Services – St. Louis Region	34
Missouri Department of Social Services- Rehabilitation Services for the Blind-St. Louis South District	60
Missouri Developmental Disabilities Resource Center.....	13
Missouri Family Health Council, Inc.	34
Missouri Institute of Mental Health	59
Missouri Lions Eye Research Foundation	41
Missouri Mental Health Consumer Network	59
Missouri Protection and Advocacy Services	8
Missouri Re-Entry Process (MRP)	67
Missouri Small Business Development Centers.....	4
Missouri Veterans Commission	68
Missouri Veterans Home	68
Missouri Women's Council	64
Narcotics Anonymous	69
National Council on Alcoholism and Drug Abuse, St. Louis.....	53
National Kidney Foundation of Eastern MO & Metro-East, Inc.	41
National Multiple Sclerosis Society - Gateway Area Chapter.....	41
National Ovarian Cancer Coalition- St. Louis Division	41
National Reye's Syndrome Foundation	42
New Beginnings C-Star, Inc. (Comprehensive Substance Treatment and Rehabilitation).....	53
New Haven School District.....	15
New Haven Care Center	50
Nurses for Newborns.....	78
OATS	34
Odyssey HealthCare, Inc. - A Hospice Company	47
Our Lady of Lourdes School.....	16
Pacific Care Center, Inc.	50
Parents As Teachers.....	21
Parents Fair Share	29
People Against Domestic Violence	21
Planned Parenthood Health Centers.....	34
Polycystic Kidney Disease Foundation	42
Post-Polio Health International.....	42
Prisoner Family Services of Lutheran Ministry Association.....	42
Progressive Patient Care Plus, Inc.....	47
Project ARK (Aids/HIV Resources and Knowledge)	45
Project REACH - Main Office	21
Public Policy Research Center (UMSL)	22
Rainbow Activity Center	13
Rape and Violence End Now (RAVEN).....	22
Recovery, Inc (Union).....	70
Recovery, Inc.(St. Louis).....	70
Ridgeway Residential Care	51
Robertson Center, The.....	26

Rolla Regional Center	59
Rural Missouri, Incorporated	4
Rural Safety and Health	22
Safety Council of Greater St. Louis	22
Saint Louis Society for the Blind and Visually Impaired	43
Salvation Army	35
Scenic Regional Libraries.....	5
Self Help for Hard of Hearing People/Cochlear Implant Association, Inc.	70
SEMSAR (Samaritan Emergency Medical Search and Rescue)	26
Shepherd's Inn	26
Show Me Healthy Women-Bureau of Cancer and Chronic Disease Control	64
Sickle Cell Anemia Disease Association	43
Social Security Administration	5
Spanish Help Line (St. Louis and surrounding areas).....	63
Special Olympics MO - East Area	68
Special School District Family & Community Resource Center	23
Spina Bifida Association of Greater St. Louis.....	43
Spring Bluff R-XV School District	16
St. Anthony Elementary School.....	16
St. Bridget Elementary School	16
St. Clair Nursing Center	51
St. Charles County Council of the Blind	61
St. Charles County Recovery Center	53
St. Clair R-XIII School District	16
St. Clair Senior Center (MEAAA)	72
St. Clare Catholic School	16
St. Elizabeth Adult Day Care Center	10
St. Francis Borgia Elementary School.....	17
St. Francis Borgia High School	17
St. Francis Borgia Food Pantry	35
St. Gertrude School.....	17
St. John the Baptist School	17
St. John's Mercy Hospital.....	48
St. Louis Arc Prevention Project.....	23
St. Louis Developmental Disabilities Treatment Centers	13
St. Louis Diabetes Coalition	23
St. Louis Dietetic Association	43
St. Louis Effort for AIDS	46
St. Louis Homeschool Network – 3	23
St. Louis West Vocational Rehabilitation.....	13
St. Vincent de Paul.....	27
Strain-Japan R-XVI School District	17
Sullivan Area Chamber of Commerce	5
Sullivan School District.....	17
Sullivan Residential Care Center	51
Sullivan Senior Center (MEAAA).....	73
Sunset Health Care Center	51
Supportive Community Options Program.....	60
Take Pounds Off Sensibly (TOPS)	5

Talking Tapes: Textbooks on Tape	61
Tanglewood Care Center	51
The Ellis Foundation.....	78
The Walker Scottish Rite Clinic for Childhood Language Disorders, Inc.	78
ThinkFirst MO.....	24
U.S. Consumer Product Safety Commission	6
U.S. Department of Health and Human Services-Region VII.....	35
Union Food Pantry	35
Union R-XI School District.....	18
Union Senior Center (MEAAA).....	73
United Ostomy Associations of America	43
United Services for the Handicapped.....	79
Unity Health Hospice.....	48
University of MO-St. Louis.....	18
USDA, Rural Development (State Office)	6
Vasculitis Foundation	44
Victim Service Council.....	8
Washington Montessori School.....	18
Washington School District	18
Washington Residential Care Center	51
Washington Senior Center (MEAAA)	73
West County Recovery Center.....	54
Whiteman AFB, MO (ACC) Family Support Center	68
Williams and Associates, Inc.....	46
Willow Brooke Assisted Living.....	51
Woman's Place	27
Women's Center - Troy Satellite Office (BCS)	65
Women's Center (BCS).....	65
Wren Hollow Residential Community	52
Youth In Need-Emergency Shelter.....	28
YWCA Women's Resource Center	65