

2011 Boone County Fair Horse Show Rules

The following rules are set in addition to the 2011 Missouri State 4-H/FFA Horse Show Guidelines. These rules are to govern only the show sponsored by the Boone County Fair 4-H/FFA Horse Show Committee. The rules governing the fun show series, regional, and state events may be different and should be checked prior to those shows.

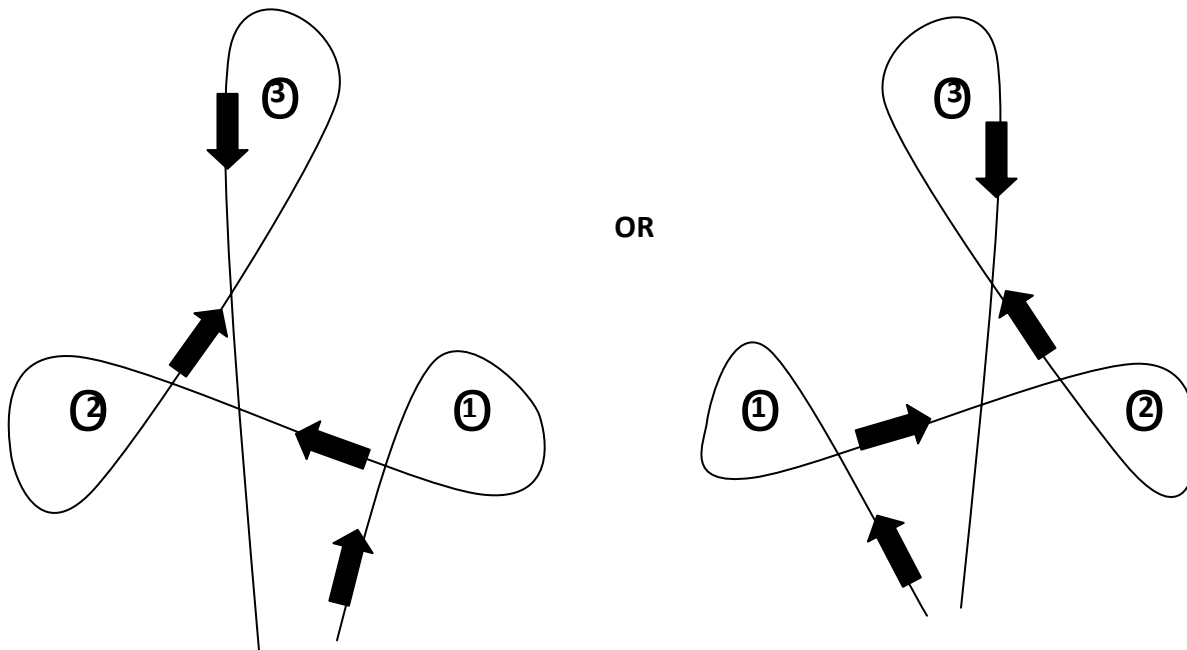
1. A youth who has enrolled only one horse may substitute an un-enrolled horse in the event of lameness, injury, illness or death of the horse with a written statement from a veterinarian. In the event of a death of a horse, the written veterinarian statement must be accompanied by a death certificate.
2. If the member has more than one horse enrolled in the horsemanship project and the main horse used in the project is lame, injured, becomes ill, or in the event of death, one of the other enrolled horses **must be used**.
3. **Important:** The Boone County Extension Center must be notified in writing (electronic or paper) within 3 days of death, lameness, illness or injury of any project horse and presented with veterinarian verification. The substituted horse must be added to the exhibitor horse project enrollment form with project leader's approval.
4. Exhibitors will not be allowed to set up their stalls before 5pm, Thursday, July 21st, 2011.
5. All exhibitors must wear their number easily visible to the judge. Numbers may be worn on the back or on the saddle pad. If numbers are on the saddle pad, they must be clearly visible on both sides of the horse.
6. Believing it is in the best interest of all 4-H and FFA members and his/her family to maintain a reputation of integrity and to present a wholesome and progressive image, the Boone County Fair sets forth the following regulation: 4-H and FFA members and his/her family are expected to conduct themselves according to the best traditions of their respective organizations. **Inappropriate conduct (such as alcohol or substance abuse, stealing, vandalism, or indiscreet behavior) will NOT be tolerated. Any violation on the part of an exhibitor, his/her family, or representative will result in dismissal of the exhibitor from showing in any further classes as deemed by the 2011 Boone County 4-H & FFA Fair Show Committee, Judge and/or Fair Board.**
7. The use of tobacco by 4-H/FFA members is prohibited during any 4-H/FFA committee sponsored event. This includes preparation and/or set-up times. It will result in disqualification from showing in further classes.
8. Appropriate show attire must be worn (see pages 59 and 60 of the State 4-H Rule Book for further information). No exposed sport bras, halter tops, tube tops, tank tops, or spaghetti straps may be worn in any class. Exhibitors are required to wear appropriate boots and long pants or jeans in all classes. Short or long sleeved, solid color, polo type shirts are acceptable to wear in English classes. Clothing must be clean, workmanlike and neat. For performance classes, an appropriate hat for the discipline or an ASTM-SEI equestrian approved helmet (properly secured) must be worn. For speed and game classes, an ASTM-SEI equestrian approved helmet (properly secured) must be worn. Appropriate casual attire is allowed in game classes. Final decisions about inappropriate wear will be defined by the Fair Committee. Saddles will be required for all game classes except Ride-a-Buck. **(Exhibitors will ride bareback in Ride-A-Buck).**
9. Each 4-H Club/FFA Chapter must have an adult supervisor (parent, leader or advisor) on the grounds at all times.
10. Horses are only to be ridden in designated areas.
11. All classes are for any breed.
12. A Green horse is defined as a horse inexperienced to the show ring and has not been shown prior to 2011. Therefore a green horse can be of any age. A horse can only be shown for one year in this category.

13. A project horse may be shown by more than one family member as long as that horse is enrolled as a project horse for each member.
14. Exhibitors may show in only one age group and in 56" & under and green horse. Exhibitors entering in Walk/Trot classes are not allowed to cross enter into an age division or 56" and under, or green horse.
15. Each Boone County exhibitor wishing to participate for Fair Horse Show High Point awards must indicate so by filling out a High Point enrollment form on the day of the show. High points will be awarded as follows: 14-21, 11-13, 8-10, Walk/Trot, 56" & under, or Green Horse. Exhibitor must choose only one category in which they would like to have points awarded (i.e. appropriate age division, Walk/Trot, 56" & under, or Green Horse). High Point is only open to Boone County 4H/FFA members.
16. **All announcements made the day of the show will supersede all printed rules. All decisions of the judge(s) are final.**

NEW FOR 2011:

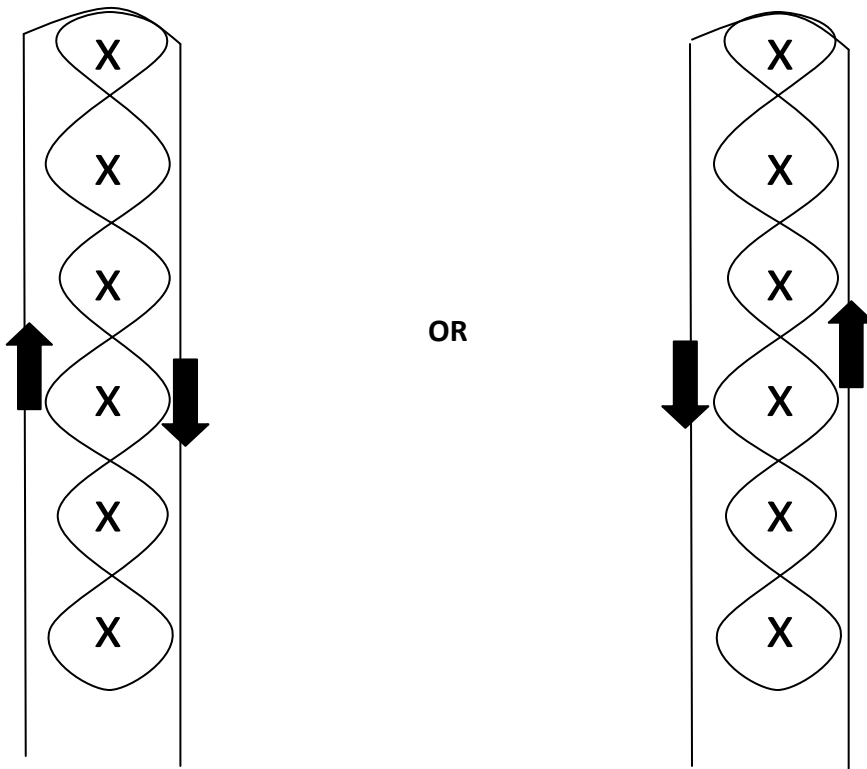
- Therapeutic, Gaited, Saddle Seat, and Costume classes do not earn points.
- Green horse will earn points as its own division.

Cloverleaf Barrel Race



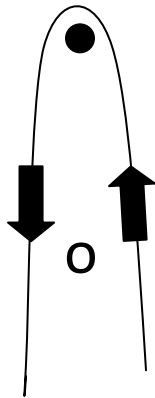
1. This is a timed event where the exhibitor will ride a cloverleaf pattern as shown above.
2. Exhibitor must go between barrels 1 and 2 when running to the finish line. Failure to do so will be considered a broken pattern and the exhibitor will receive a “no time”.
3. For each barrel that is knocked over, a five (5) second penalty will be added to the exhibitor’s time.
4. If a horse breaks the time barrier before completing the pattern, the exhibitor will receive a “no time”.
5. Pattern may be modified for Walk/Trot.

Pole Bending

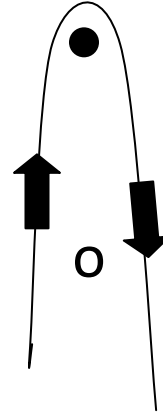


1. In this event, the exhibitor will ride the pole pattern as shown above (walk/trot pattern may be modified to only include three [3] poles).
2. For each pole knocked over, a five (5) second penalty will be added to the exhibitor's time.
3. If the horse's shoulder passes the next pole to weave in pattern on the incorrect side, a "no time" will be give to the exhibitor as this is a broken pattern.

Flag Race



OR



1. In this timed event, the exhibitor will ride the pattern as shown above.
2. Failure to deposit the flag in the barrel, or having the flag bounce back out of the barrel, will result in a "no time".
3. If the exhibitor does not end the pattern on the opposite side in which they started, a "no time" shall be given.
4. Once the barrel is turned, the exhibitor must stay on that side to retrieve the flag. The exhibitor CANNOT circle the barrel.
5. For each barrel knocked over, a five (5) second penalty shall be added to the exhibitor's time.
6. Pattern may be modified for Walk/Trot.