



# Heart of Missouri Master Gardener Newsletter

“Helping People Learn to Grow.”

## Points of Interest:

- **MDC Seedling Order form:**  
[mdc.mo.gov/7294](http://mdc.mo.gov/7294)
- **Green Tea environmental action program:**  
[thegreentea.org](http://thegreentea.org)
- **Master Naturalist Training, Feb. 25:**  
[extension.missouri.edu/masternaturalist/columbia/](http://extension.missouri.edu/masternaturalist/columbia/)
- **Honey Bee Info:**  
[honeybee.tamu.edu/](http://honeybee.tamu.edu/)
- **Show Me Yards:**  
[www.gocolumbiamo.com/PublicWorks/StormWater/documents/smyn.pdf](http://www.gocolumbiamo.com/PublicWorks/StormWater/documents/smyn.pdf)
- **Art in Bloom, MU Museum of Art & Archaeology, Mar. 7-9:**  
[museum.research.missouri.edu/](http://museum.research.missouri.edu/)



## A Great Way to Begin

If attendance is any indication, Heart of Missouri Master Gardeners are ready to begin the new year with dedication for new projects and participation at our meetings.

**Forty-one** enthusiastic Master Gardeners attended last Tuesday's meeting where they listened to **Delores and Bill Clark** describe their backyard birding adventures. The Clarks shared some well-seasoned advice on how to improve backyard habitats for birds. We discussed many common plants birds love, including poke, el-

derberry and wild lettuce. The Clarks recommended providing shrubs close to feeders to provide a safe landing place for birds. Also recommended were affordable shrubs and trees from MDC.

**President Rich Frieden** led discussion by committee chairs for description of their work on committees and any upcoming projects. Committee sign up sheets are available at each meeting, and committee chair contact information can be found in the newsletter.

**Don Cunningham**

talked about his contributions to the newsletter with an article that features a committee. Committee chairs are encouraged to contact Don. This is a good way for MG's to gain a better understanding of the important work we do.

## Backyard Birds

According to the Audubon Society, the average population of our common species of birds have declined by 68% since 1967, and some species declined as much as 80%. That makes providing backyard habitat even more important. To read more about these declining species and what you can do to help go to:

[www.audubon.org/bird/stateofthebirds/cbid/index.php](http://www.audubon.org/bird/stateofthebirds/cbid/index.php)

## Upcoming Program: Why Bees?

Long time Master Gardeners and owners and operators of the well-known “Walk About Acres” farm, Art and Vera Gelder will present the February program on bees. Not only will they discuss the current information on Colony Collapse Disorder, but they

will also share ways gardeners can help encourage and protect all insect pollinators. The Gelders are long time bee keepers and host many groups, including school children, to their farm where they also raise native plants, vegetables and animals.

# Heart of Missouri

## Habitat for Humanity



If you want others to be happy, practice compassion. If you want to be happy, practice compassion. ~Dalai Lama

The Habitat for Humanity Committee works with families to improve their home landscape and increase the value of their home. Brenda Jones and Phyllis Barks co-chair this committee that began working with Habitat families in 1999. Since this time, the Habitat committee has assisted approximately 35 families with selection, planting, and care of trees and shrubs. We also provide a quarterly newsletter of seasonal lawn and gardening tips, occasionally offer lawn care

and flower gardening workshops, and provide on-site consultation for problem-solving of landscape problems and planning for projects.

MGs have also assisted the Habitat office in the preparation, planting, and maintenance of the tree and shrub border between the Norbury Hill development and historic Confederate Hill property. This fall we landscaped the Norbury easement along Oakland Gravel Road.

Over the years, we have had

an opportunity to collaborate with other community resources to provide plant materials and volunteer services. They include Superior Garden Center, McConnell's Plantland, Metro Rotary Club, University of Missouri Forestry student volunteers, 4-H, Eagle Scouts, to name a few.

If you'd like to volunteer for Habitat projects, contact Brenda ([jonesbj@missouri.edu](mailto:jonesbj@missouri.edu) or 573.884.6190) or Phyllis ([BarksP@missouri.edu](mailto:BarksP@missouri.edu)).

**“ Remaining active in gardening has added years to my life—of that I’m utterly convinced...”**  
**Jim Wilson.**

## Drying Sweet Basil, by Jim Wilson

After several years of unpredictable and often disastrous results with drying sweet basil, I hit upon an easy and reliable method that doesn't result in blackened leaves with an odd aroma and taste.

As soon as plants are large enough to withstand harvesting, snip off branch tips with two or three sets of leaves, but no blossoms or flower buds. Snip the petioles off the leaves so you won't have to deal with them in the dried product. Work rapidly so the leaves don't begin to blacken before you can complete the process.

Unfold a large terry-cloth towel and distribute a layer of basil leaves over the surface. Carefully roll up the towel into a snug cylinder. Secure in three places with a rubber band. Stash the roll on a closet or pantry shelf

where it is dark and the air is dry from air conditioning.

The towel will absorb most of the moisture from the succulent leaves. After seven to ten days, transfer the half-dried leaves to your microwave. Layer them on paper towels.

Dry in bursts of high power, 15 seconds at a time, with one minute between bursts. If your microwave lacks a lazy Susan, turn the towels between bursts. After three or four bursts check the leaves for brittleness. Depending on the microwave you may need up to ten short bursts of maximum power to produce brittle leaves.

Store the whole dried leaves in labeled freezer bags. Don't crush the leaves until you are ready to add them to cooked dishes.

Another and simpler, but less reliable way to dry sweet basil is to harvest terminal clusters and stand them more or less upright in a paper shopping bag. Stow the open bag in the trunk of your car or behind the seat of a truck. The bottled-up warm air should dry the leaves in 10 to 14 days. Start out small because if the trapped air is too humid, some or all of the leaves may turn black. The "car trunk" method works beautifully and reliably on all other herbs except basil. Bon appetit!

For more on Basil go to: [en.wikipedia.org/wiki/Basil](http://en.wikipedia.org/wiki/Basil)



**Basil (*Ocimum basilicum*)**

## A Special Gardening Symposium

**"Making Your Garden a Work of Art"** is the theme for the 2008 Garden Symposium February 22-23 at Nelson Atkins Museum of Art in Kansas City.

Saturday Feb. 23: **Rosemary Alexander**—"Using an Artists Approach for Creating Plant Combinations." Rosemary is founder of English Gardening School at Chelsea Physic Garden in London.

**Jennifer Bartley**—"Designing the Artful Kitchen Garden," and "Garden Design: A Painting to Look At, A Sculpture to Walk Through." Jennifer is the

author and illustrator of *Designing the New Kitchen Garden; An American Patager Handbook*.

**Dan Benarcik**—"Tough as Nails" and "Foliage First." Dan is a horticulturist at Chanticleer, and writer for many horticultural magazines.

**Richard Reames**—"What is Arborsculpture." Richard is the author of, "How to Grow a Chair" and "Arborsculpture—Solutions for a Small Planet." He exhibited at the World Expo in Japan in 2005.

REGISTRATION: \$89 to Friends of Powell Gardens: Attn Registration 1609

NW US Hwy. 50 Kingsville, MO 64061. Or for credit cards, phone 816-697-2600 Ext. 225.

For carpool info: Marie Pasley, 573-474-5245 or

[smpasley@aol.com](mailto:smpasley@aol.com)

For more info on the symposium:

<http://powellgardens.org/default.asp?page=Symposium>

### Show Me Yards Workshop:

Feb. 6, 13, 20; 6:30-9 p.m.; ARC, Columbia. Free. Registration:

[Mona.menezes@gocolumbiamo.com](mailto:Mona.menezes@gocolumbiamo.com) or 573-874-7616.



## Committees and Chairs

### Advanced Training:

Tony White (573) 443-7949, [Green\\_places\\_forever2003@yahoo.com](mailto:Green_places_forever2003@yahoo.com)

**Community Gardens:** Barbara Michael (573) 445-0661, [bam626\\_us@yahoo.com](mailto:bam626_us@yahoo.com)

**Educational Displays:** Peggy Ann Eichen (660) 841-5253, [eichenp@missouri.edu](mailto:eichenp@missouri.edu); Melissa Hough (573) 696-0198; [mmhough@gmail.com](mailto:mmhough@gmail.com)

**Extension Grounds:** Kaye King (573) 673-6753, [KayeKing@socket.net](mailto:KayeKing@socket.net); Mary Jane King (573) 474-2489, [mjking@socket.net](mailto:mjking@socket.net)

**Habitat for Humanity:** Brenda Jones (573) 884-6190, [jonesbj@missouri.edu](mailto:jonesbj@missouri.edu) or Phyllis Barks, (573) 698-3845, [BarksP@missouri.edu](mailto:BarksP@missouri.edu)

**Hotline:** Emily Bonwich (573) 449-0444, [ebonwich@mchsi.com](mailto:ebonwich@mchsi.com);

**Gardening with Youth:** Lea Langdon (573) 447-1257, [langtrea@yahoo.com](mailto:langtrea@yahoo.com)

**Mentoring: Open**

**Missourian Articles:** Don Day (573) 445-9792, [daydr@missouri.edu](mailto:daydr@missouri.edu)

**Mizzou Botanic Garden:** Hsiao-Mei Wiedmeyer (573) 445-4735, [WiedmeyerH@health.missouri.edu](mailto:WiedmeyerH@health.missouri.edu)

**Newsletter:** Julie Fisher (573) 445-3488, [Julie8401@tranquility.net](mailto:Julie8401@tranquility.net)

**Plant-a-Row for the Hungry:** Betty Gayle Smith (573) 874-3997 [turtleisland@tranquility.net](mailto:turtleisland@tranquility.net)

**Plants of Merit:** Phyllis Barks (573) 698-3845, [barksp@missouri.edu](mailto:barksp@missouri.edu)

**Speakers' Bureau:** Alice Havard (573) 445-4624

**Web Page/Plant Protection Grant:** Don Day, [daydr@missouri.edu](mailto:daydr@missouri.edu)

## Officers

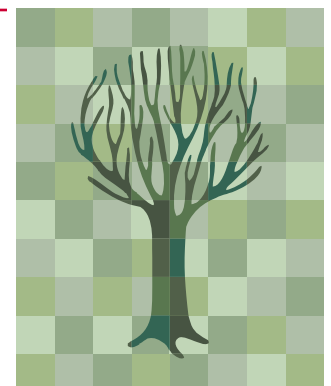
**Rich Frieden, President:** [friedenr@missouri.edu](mailto:friedenr@missouri.edu), 573-875-5078

**Julie Fisher, Vice-president:** [julie8401@tranquility.net](mailto:julie8401@tranquility.net), 573-445-3488

**Kaye King, Secretary:** [kayeking@socket.net](mailto:kayeking@socket.net), 573-442-2877

**Sandy Perley, Treasurer:** [perleys@missouri.edu](mailto:perleys@missouri.edu), 999-2643

**Debbie Scholes, State Representative:** [ScholesD@missouri.edu](mailto:ScholesD@missouri.edu), 573-657-9731



University of Missouri Extension-Boone County

1012 North Highway UU

Columbia, MO 652032

[www.extension.missouri.edu/boone/mg.html](http://www.extension.missouri.edu/boone/mg.html)



**Next Meeting: February 19, 7:00 P.M.**

**Boone Co. Extension Center, 1012 N. Hwy UU, Columbia**

**Special Program:**

**“Why Bees?” by Art & Vera Gelder**

**Refreshments provided by: Snacks: Rose Mayfield & Tanja Patton;**

**Drinks: Mary Jane King**

**Remember to wear your Master Gardener Nametag!**

The Heart of Missouri Master Gardener Newsletter is published monthly for Master Gardeners in Central Mo.

For more information contact:

**Don Day**

Natural Resources Engineer

University of Missouri Extension - Boone County

1012 N. Highway UU, Columbia, MO 65203

(573) 445-9792, extension 310; [daydr@missouri.edu](mailto:daydr@missouri.edu)

UNIVERSITY OF MISSOURI  
 **Extension**

University of Missouri, Lincoln University,

U.S. Department of Agriculture

and Local University Extension Councils Cooperating

University of Missouri Extension does not discriminate on the basis of race, color, national origin, sex, sexual orientation, religion, age, disability or status as a Vietnam-era veteran in employment or programs.

Boone County Extension Center