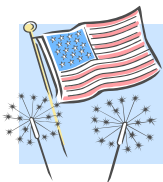


# Heart of Missouri Master Gardener Newsletter



"Helping Others Learn to Grow."

July 2007



Inside this issue:

Volunteer Ops	2
Announcement	2
Horticulture Therapy Institute	2
Advanced Training	2
Sharing Summer's Bounty	2
Upcoming Events	3
New MG Classes	3

## A Beautiful Evening, A Beautiful Campus

Where to begin to describe the incredible tour we had of some of the **Mizzou Botanic Garden**? First, the weather more than cooperated. We had clear skies, light breezes, and just-right temperatures. 36 Master Gardeners enjoyed the weather and tour, conducted by **Charles Paxton**. Charles filled in as main tour guide for **Marsha Bower**, who headed up the rear via golf cart and broken foot. Both work for MU's Landscape Services and help keep the campus beautiful.

The tour began at the **Jesse Hall Container Garden**. Set along the south entrance paved area, large, classic shaped containers hold a lovely assortment of annuals and tropicals that are changed each year. Two notables were the healthy banana

tree and heavenly scented Angel Trumpet.

Here, and throughout the Mizzou Botanic Garden, colors are repeated to help create a unique unity. Special care is taken to incorporate plants that add foliage texture and color interest throughout the season.

**Natives** are used extensively, not only for their beauty, but for their hardiness. MU also participates in the **Plants of Merit program**. Some of the notables doing double duty as both Missouri natives and Plants of Merit were Blue False Indigo ("baptisa australis"), Christmas Fern ("polystichem acrostichoides"), and trees such as Swamp White Oak ("quercus bicolor").

Charles left us with a great



A lovely, yearly changing display at the Jesse Hall Container Garden.

horticulture tip: "Look for shrubs for containers; they're usually cheaper and larger to begin with."

Thanks **Marsha, Charles and President Rich Frieden** for helping make the beautiful evening.

For maps and plant lists of the Mizzou Botanic Garden:  
<http://gardens.missouri.edu>

## Cut Flower Field Trip

Next meeting we will have the great opportunity to visit a **local cut flower farm, owned and operated by Carolyne Anderson-Attebery**.

Carolyne grows cut flowers for flower shops throughout

Missouri and several in St. Louis. She says that we should **expect to see weeds** as these are flowers for the markets rather than for her personal landscape. Carolyne also says to bring some **insect**

**repellant**, if you wish.

This field trip will carpool from **Patricia's Grocery Store, Columbia, leaving at 6:00. The farm is located about 22 miles north on Hwy. 63.**

### Special points of interest:

- Edible Weeds?!  
[www.saucemagazine.com/article/1/72](http://www.saucemagazine.com/article/1/72)
- Cut Flowers  
[www.extension.umn.edu/distribution/horticulture/DG7355.html](http://www.extension.umn.edu/distribution/horticulture/DG7355.html)
- State MG Conference  
[www.extension.missouri.edu/adair/MGConf/](http://www.extension.missouri.edu/adair/MGConf/)

## Volunteer Opportunities

If anyone is interested in **helping with the newsletter, your editor, Julie Fisher, would appreciate it!** Here's some ideas for ways to help:

**Search out** "Upcoming Events." (I can provide a list of sources)

**Contact** Committee Chairs for reports. (This can be done on an "as needed" basis.)

**Look for** "Newsworthy" MG items. (These might include special events or review of one, or other items of interest.) Your work **counts as volunteer hours** & would help save me from "newsletter burnout."

[julie8401@tranquility.net](mailto:julie8401@tranquility.net)

### Announcement:

If you prefer to receive the MG Newsletter by email, please make sure we have your correct email on Don's master list. (A good indication that we don't have your correct email is if you have not been receiving emails from Don announcing the newsletter's posting or other news). Also, if you currently receive the newsletter by mail and want to discontinue, drop Don an email and let him know; again, make sure he has your correct email address. [daydr@missouri.edu](mailto:daydr@missouri.edu) or 573-445-9792.

The **Horticultural Therapy Institute** will offer **Introduction to Horticultural Therapy at Holden Arboretum in Kirtland, Ohio, October 4-7, 2007**. The non-profit, Horticultural Therapy Institute, trains students from all over the country to use plants and gardening to improve the lives of others, and become leaders in this field. **The class is accredited by the American Horticultural Therapy Association** and students can obtain academic credit through Colorado State University as well as continuing education units (CEU's). For more information on the introduction class or to register email [ckramer@htinstitute.org](mailto:ckramer@htinstitute.org) or call **303-388-0500**. Full class descriptions, faculty profiles and schedules can be found at [www.htinstitute.org](http://www.htinstitute.org). Registration is now being accepted. Remaining certificate classes are held in Denver.

## Advanced Training Opportunity

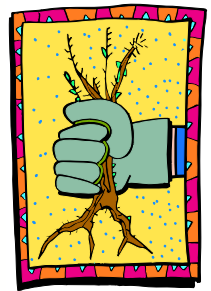
Active Master Gardeners are required to complete 20 hours of volunteer service and recommended **six hours** of continuing education. In that regard, an **Advanced Training session on Weed Identification will be held at Bradford Farm, east of Columbia on August 6 from 6:00 p.m. to 8:00 p.m.** This will consist of some hands-on and some classroom type lecture. Kevin Bradley will present the training and will focus on

problem weeds in the horticulture and lawn area.

Cost of the training is \$10.00. **Please call the Boone County Extension Center to make reservations.** We do need to know how many are coming so be sure and reserve your space.

Extension Center: (573)445-9792, or Don Day: [daydr@missouri.edu](mailto:daydr@missouri.edu)

"When weeding, the best way to make sure you are removing a weed and not a valuable plant is to pull on it. If it comes out of the ground easily, it is a valuable plant. "  
-Author Unknown



## A Special Way to Share from the Community Garden Coalition

Many people have asked, "**Where do we take extra produce to donate it to the hungry?**" Here are several locations that are in desperate need of produce:

- Calvary Baptist Food Pantry 449-3144
- Central Missouri Food Pantry 874-7848 (located at 1408 Indiana off Loop 70)
- Harbor House Soup Kitchen 442-1984
- Loaves and Fishes Soup Kitchen 875-0826
- Meals on Wheels of Columbia, Inc. 886-7554
- Progressive Missionary Baptist Food Pantry 443-0611
- Russell Chapel Church Food Pantry 443-6028
- Salvation Army Food Pantry 442-3229
- Voluntary Action Center 874-2273
- Columbia Housing Authority (food

pantry)

Please try and keep an estimate in your head of pounds of food donated, and let the CGC know at the end of the season for grant applications. Also, if you do any volunteer hours, that also translates into more grant money.

We still need some help catching up on (organic) weed control. If anyone is able to donate time for this purpose, it would be greatly appreciated. Email me at [artistic1957@excite.com](mailto:artistic1957@excite.com), or 573-875-5430.

Thank you in advance,  
Rhonda Woolsey

## Committees & Projects

We are required to join at least one committee. Descriptions of the committees are online at:

[oureach.missouri.edu/boone/Master%20Gardeners/MGcommittees2005.doc](http://oureach.missouri.edu/boone/Master%20Gardeners/MGcommittees2005.doc)

**Advanced Training:** Vera Gelder (573) 474-8837, [walkabotmidamerica.net](http://walkabotmidamerica.net)

Tony White (573) 443-7949,

[Green\\_places\\_forever2003@yahoo.com](mailto:Green_places_forever2003@yahoo.com)

**Community Gardens:** Barbara Michael (573) 445-0661,

[bam626\\_us@yahoo.com](mailto:bam626_us@yahoo.com)

**Educational Displays:** Peggy Ann Eichen (660) 841-5253,

[eichenp@missouri.edu](mailto:eichenp@missouri.edu); Melissa Hough (573) 696-0198; [mmhough@gmail.com](mailto:mmhough@gmail.com)

**Extension Grounds:** Kaye King (573) 673-6753, [KayeKing@socket.net](mailto:KayeKing@socket.net); Mary Jane King (573) 474-2489,

[miking@socket.net](mailto:miking@socket.net)

**Habitat for Humanity:** Brenda Jones (573) 884-6190, [jonesbj@missouri.edu](mailto:jonesbj@missouri.edu)

**Hotline:** Emily Bonwich (573) 449-0444, [ebonwich@mchsi.com](mailto:ebonwich@mchsi.com);

**Gardening with Youth:** Lea Langdon (573) 447-1257,

[langtrea@yahoo.com](mailto:langtrea@yahoo.com)

**Mentoring:** Marie Pasley (573) 474-5245, [smpasley@aol.com](mailto:smpasley@aol.com)

**Missourian Articles:** Don Day (573) 445-9792, [daydr@missouri.edu](mailto:daydr@missouri.edu)

**Mizzou Botanic Garden:** Hsiao-Mei Wiedmeyer (573) 445-4735,

[WiedmeyerH@health.missouri.edu](mailto:WiedmeyerH@health.missouri.edu)

**Newsletter:** Julie Fisher (573) 445-3488, [Julie8401@tranquility.net](mailto:Julie8401@tranquility.net)

**Plant-a-Row for the Hungry:** Betty Gayle Smith (573) 874-3997

[turtleisland@tranquility.net](mailto:turtleisland@tranquility.net)

**Speakers' Bureau:** Alice Havard (573) 445-4624

**Web Page/Plant Protection Grant:** Don Day, [daydr@missouri.edu](mailto:daydr@missouri.edu)

**Plants of Merit:** Phyllis Barks (573) 698-3845, [barksp@missouri.edu](mailto:barksp@missouri.edu)

## Upcoming Events

**July 7, 1-4 p.m., Daylily Show: Summer Symphony;** featuring designs by the Central Mo. Hemerocallis Society; Columbia Public Library: [www.dbrl.org](http://www.dbrl.org); 443-3161.

**July 7, 2007, Prairie/Woodland hike at Cuivre River State Park.** Approx. 2 mile hike beginning at 10 a.m. Visitors' Center. 636-528-7247.

**July 19th, 7 p.m.; Speaker's Bureau; Art Gelder** on the current honey bee problems. Columbia Public Library.

**July 11, 18, 25; Compost sale to public,** Compost Facility, 5700 Peabody Rd., Columbia; 474-9145.

**July 23-29; Boone Co. Fair;** Boone Co. Fairgrounds, Columbia; [www.bonecountyfairgrounds.com](http://www.bonecountyfairgrounds.com)

**July 29 2007, 2:00-3:00 pm,** Runge Conservation Nature Center, Jeff City; **Explore the members of Missouri's rose family** including their history and current facts. Reservations Required 573-526-5544.

## Spread the Word & Surf Some Sites

Time flies by; before we know it, we'll be dividing perennials, raking leaves and watching the days grow shorter as summer ends and fall begins. As September rolls around, so will an opportunity to grow some **new Master Gardeners**. The dates for the **fall training session** have been set for Mondays through **September 10 to November 26** from 6-9 p.m. at the MU Extension office. So spread the word and stay tuned for more information.



Another great bit of information coming from Don's office: On the National Gardening Association's website is a link to:

[www.garden.org/zipzone](http://www.garden.org/zipzone)

Type in a zipcode and get a hardiness zone. Then use the map and click on your location and find the planting zone. Another useful site with great info on plants: <http://plants.usda.gov> Search for various characteristics of plants you want along with your hardiness zone and get a selection of plants that would work. Plants are listed by both common name and Latin name.

The Golden Trowel:  
Awarded to Julie Fisher by  
Alice Havard, June 07.



## Our Officers

**Rich Frieden, President:** [friedenr@missouri.edu](mailto:friedenr@missouri.edu), 573-875-5078

**Julie Fisher, Vice-president:** [julie8401@tranquility.net](mailto:julie8401@tranquility.net), 573-445-3488

**Kaye King, Secretary:** [kayeking@socket.net](mailto:kayeking@socket.net), 573-442-2877

**Sandy Perley, Treasurer:** [perleys@missouri.edu](mailto:perleys@missouri.edu), 999-2643

**Debbie Scholes, State Representative:** [ScholesD@missouri.edu](mailto:ScholesD@missouri.edu), 573-657-9731

"Helping Others Learn to

University of Missouri  
Extension-Boone County  
1012 North Highway UU  
Columbia, MO 652032

"Heart of Missouri Master  
Gardeners"

**We're on the Web:**

[extension.missouri.edu/boone/  
mg.html](http://extension.missouri.edu/boone/mg.html)

**NEXT MEETING: JULY 17**

**FIELD TRIP TO CAROLYNE ANDERSON ATTEBERY'S CUT FLOWER FARM**

**CARPOOL FROM PATRICIA'S FOOD STORE PARKING LOT, 6:00 P.M.**

*To Carlyne's:*

North on Hwy 63. Pass the Hwy. 22 marker and continue for two miles. Turn left; (no left turn lane), cross over Northbound Hwy.63, onto Chapel Grove Cemetery Road (gravel). Continue until gravel crosses gravel and proceed down the lane with the "Dead End" sign. Go one mile. Look for a big cedar tree and red barn.

Bring insect repellent. There will be big picnic tables for our meeting and snacks.

Refreshments provided by: snacks, L. Langsteiner, C. Mazzacano; drinks, N. Franklin

Remember to Wear Your Master Gardener Nametag!

The Heart of Missouri Master Gardener Newsletter is published monthly for Master Gardeners in Central Missouri. For more information contact:

**Don Day**

Natural Resources Engineer  
University of Missouri Extension - Boone County  
1012 N. Highway UU, Columbia, MO 65203  
(573) 445-9792, extension 310; daydr@missouri.edu

**Todd Lorenz**

Horticultural/Agronomy Specialist  
University of Missouri Extension - Cooper County  
Courthouse, 608 E. Spring Street, Boonville, MO 65233  
(573) 445-9792 or (660) 882-5661; lorenzt@missouri.edu

UNIVERSITY OF MISSOURI  
 **Extension**

*University of Missouri, Lincoln University,  
U.S. Department of Agriculture  
and Local University Extension Councils Cooperating*

University of Missouri Extension does not discriminate on the basis of race, color, national origin, sex, sexual orientation, religion, age, disability or status as a Vietnam-era veteran in employment or programs.

Boone County Extension Center  
Office Hours are:  
8:00 a.m. - 12:00 p.m.  
12:30 p.m. - 4:30 p.m.