

BOLLINGER COUNTY IN-4-MER



August 2011

4-H meetings include:

Thursday, August 4 -
Crooked Creek 4H Club, 7 pm, Extension Office

Friday, August 5 -
County Line 4H Club, at their annual yard sale, at the Pavilion near the ballfield

Leopold 4H Club
Sunday, August 14 -
Cape Splash, Swim Party,
12:00 pm - ??

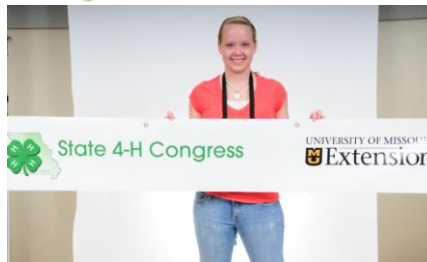
Tuesday, August 16 -
Country Club 4H meeting - 6:00 pm, Marquand Day Care

Monday, August 22 -
Cheerful Workers 4H Club, 7:00 pm, Sedgewickville City Hall

Bollinger County Ride if You Dare 4H Rodeo Club meetings -TBA



celebrate
Life's
moments



Taylor Eftink attended 4H Congress at Columbia.

Heartland 4H Camp FUN FUN FUN!



Campers this year were Ashley Nussbaum, Beth Lincoln, Dakota Leimer, Kyleigh Wolfe and Grace Seabaugh.

Calendar of Events

- August 4 – Crooked Creek meeting
- August 5 – County Line annual 4H Yard Sale
- August 6 – Butler County Rodeo
 - Prospect Show
- August 11-21 – Missouri State Fair
- August 14 – Leopold 4H outing at Cape Splash
- August 16 – Country Club meeting
- August 20 – Scott County Rodeo
- August 22 – Cheerful Workers meet
- August 27 – Finals Rodeo
- September 5 – Labor Day
- September 10-17– SEMO Fair
- September 23-24 - East Perry Fair
- October 1 – Bollinger County Fair
- October 8 – 4H Appreciation Day
- November 1 – Completed Project Reports due
- November 6 – Daylight Savings ends
- November 11 – Veterans Day
- November 24 – Thanksgiving



Need to put together a family emergency plan? Check out <http://extension.missouri.edu/publications/DisplayPub.aspx?P=EMW1011> for a template and guidance.

Get Ready For The 2011 SEMO Fair!!! September 10-17

ALL OFFICIAL LIVESTOCK ENTRY

FORMS must be
completed and received by
August 9, 2011.

Send Beef, Swine, Sheep,
Goats, Dairy, Bucket Calf,
Draft Horses, Draft Mules,
Draft Ponies and Mini
Mules entry forms to
Marilyn Schott, 73739 State
Hwy. 72, Jackson, MO 63755
Official Entry Forms for
4H Poultry, Rabbits &
Guinea Pigs must be sent to
Dortha Strack, 2907 Boutin Dr.,
Cape Girardeau, MO 63701.

YOU CAN GO TO
WWW.SEMOFAIR.COM
AND PRINT OFF ANY
OF THE FORMS
DIRECTLY FROM THE
WEBSITE.

NO STALL RENT FOR
ANIMALS ENTERED ONLY
IN 4H DIVISION.

4H/FFA

Livestock Sales
Thursday, September 15
4:30 pm

Livestock Arena

Sale Order:
Barrows, Steers, Goats, Lambs

4H Building Exhibit drop
off times – 8:00 am to
12:00 Noon; Open Class
Arena Bldg./Field Crops
drop off times – 8:30 am –
1:00 pm.

You can enter 3 items per project.
Posters accepted in all projects –
size is 14 x 22 inches (1/2 of a
poster board).

Admission to fairgrounds will be
charged starting at 11 a.m.;
exhibitors entering between 11
& noon will need to show
completed entry form to enter at
no charge; exhibitors wanting to
unload at the 4H Hall MUST
come in through the Livestock
entrance and must be on the
grounds before 10:30 a.m.

Exhibit Release Time –
Sunday, September 18,
10:00 am – 12:30 pm.

LIVESTOCK MEMBERS – Be sure that you are current with your SMQA requirements

(necessary if you plan to show
livestock at the SEMO Fair.)

Do this online if you did
not make it to the session at
Cape County Extension!!

**Make sure your exhibit tag
contains ALL the information
asked for in the fair book –
some projects require info
written on the back, some
require project leaders
signature, etc. Don't lose
points on paperwork!!**

*Other Things to do at the
fair*

4H Sheep/Goat Tent Show Ring

Dress Up Contest

(Poultry, Rabbits, Pigeons, Cavies)

Sunday, Sept. 11 – 12:30 pm

Animals MUST have been shown in
4H or entered to show in open class.
Pre-register by noon on the 11th;
open to any exhibitor who can
control the animal without
assistance.

Children's Rooster Crowing & Hen Clucking Contest

Follows Dress Up Contest.

Open to any child under 18; no
pre-registration required.

Live Rooster Crowing Contest

Saturday, Sept. 17 – 1:00 pm

1 entry per handler; handler MUST
be the exhibitor of the rooster
entered in the fair; rooster MUST
have participated in open or 4H
poultry competition. Pre-register at
the Poultry Tent when bringing
chickens in.

Livestock Arena

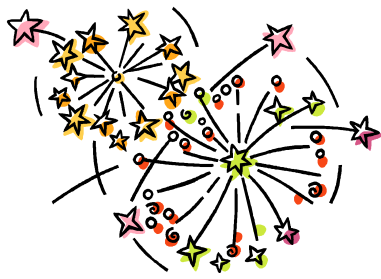
Pee Wee Showmanship

Saturday, Sept. 17 – 2:00 pm

Child MUST be 4 and no more
than 8 years old as of Dec. 31,
2010. Participant MUST provide a
halter broke animal he/she can
manage unassisted for the event.
Animals already entered in fair
competition may be used, or
animal may be brought to the
grounds before noon on Sept. 17
and removed immediately after
event.

Decorate a Bale Contest

Exhibitor must be 18 or under; bale can be prepared by an individual or group. One small bale of hay, straw, grass or bean straw. Entry tags available at Fair Office – must be attached to bale twine. Bales MUST be in place in the Field Crops tent by 6 pm, Sept. 11 and MUST be picked up Sept. 17 between 7 am and 9 pm.



Happy July & August Birthdays!

July – Tracy Baremore, Klara Beel, Anthony Eftink, Ronda Elfrink, Simon Elfrink, Aly & Lauren Fluchel, Mallory James, DJ Keim, Dakota Leimer, Stacey Lincoln, Hunter Massey, Shelby Schreckenberger, Richard Seabaugh, Kenny & Kylee Whitener.

August - Bev, Kenny & Lacey Cook; April & Chelsea Cureton, Cassie Engelen, Jessie Holweg, Tate Kiefer, Kim Lochirco, Carol Morgan, Stacey Seabaugh Tanner, Bobbi Welker, Kyleigh & Nicole Wolfe



Club Leaders – please remember to keep track of the community service projects/activities your club members are involved in during the year.

The list that is turned in by September 15 (form in Clover Book) is what determines the seal a club earns for the year.

ATTENTION RODEO CLUB MEMBERS:

POINTS ARE
POSTED AT

<http://extension.missouri.edu/stoddard/> (look under Clara Green's photo - it will take you to the Southeast Region 4-H page)

**RODEO BOOKS DUE TO OFFICE
BY AUGUST 10TH!!!**

PROJECT RESOURCES AVAILABLE ONLINE

Project resources Missouri 4-H website under Projects at <http://4h.missouri.edu/projects/>.

For example, there is a really good dog project related link under Dog project at

<http://www.workingdogweb.com/Kids&Dogs.htm>. Check out the AKC link for activity sheets at

http://www.akc.org/public_education/resources.cfm?page=7/.

Under Projects are project briefs with lots of ideas.

Cape County Youth Prospect Steer & Heifer

Show

**Saturday,
August 6**

SEMO Fair Grounds –

**Show Arena, Cape
Girardeau**

**Open to ALL Cape,
Bollinger & Scott**

**County 4H & FFA Beef
Project members.**

**Show begins at 10:30
a.m.; animals must be
in place by 8:00 a.m.**

**You can attend even if
you are NOT bringing
cattle. Cash & prizes**

**for everyone including
Belt Buckles for
Champions!**

For additional info contact
Carol Haley, 866-3231 or the
Cape County Extension
Office, 243-3581.

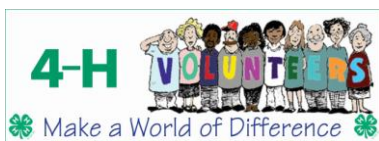
BEEF RESOURCES

Those interested in the beef project should check out two new web resources.

- YouTube videos part 1 and 2: Low-stress halter breaking cattle
- Reasons Terminology for Breeding Cattle

Both can be found on the Missouri 4-H website at

<http://4h.missouri.edu/projects/projects1.htm#Beef>



WISE WORDS

If you want happiness for a lifetime -- help the next generation. Chinese Proverb

WAYNE COUNTY FAIR SEPTEMBER 24 SALE BARN, SILVA, MO

LIVESTOCK SHOW INFO

ALL animals must show up before 9 am to be vet checked.

GOATS – must be pre-registered by 8/1. \$5 entry per goat – Judging starts at 1 pm. Classes: Doe (under 1 year) Doe (over 1) Buck (under 1 year) Buck (Over 1) Wether Market Goat (under 1 yr., 30-140 lbs. at weigh in)

4H only Showmanship Class.

Contact Tara Looney, (573) 224-5673 or 3667 for info.

BEEF – must be pre-registered by 8/1. \$5 entry per animal; judging starts at 3 pm. All cattle shown under halter. Classes (all under 2 years old) Market Steer; Angus-Heifer; Charlois; Hereford; Simmental; Other Breeds

4H only showmanship class.

Contact Jim Bangert at (573) 224-3828. for more info.

POULTRY & RABBITS – must be pre-registered by 8/15. Judging starts at 11 am for poultry; 12:00 pm for rabbits. Poultry Classes: Meat & Egg Layer, Ornamental, Bantam and Waterfowl Rabbit Classes: Buck & Doe For more info contact Amy or Justin Bennett at (573) 495-2060 or 629-8577

HALTER HORSE SHOW – registration starts at 4 pm; judging at 5 pm. Classes: Open Quarter Horse & Open Gated Horse. Register the day of show; must have a Negative Coggins. For info contact Justin or Amy Bennett at (573) 495-2060 or 629-8567.

4H AUCTION – There will be a 4H auction on Sunday, 9/25 at 2 pm. If you are in any 4H club you may auction off your livestock or any other project item.

LIVESTOCK FORMS AVAILABLE IN THE EXTENSION OFFICE .

On-Line

Websites to check

For teaching kids to sew – www.thecraftstudio.com
Educational Link for welding tips – www.lincolnelectric.com
Information on guinea pigs (cavies) – acbaonline.com
Information on rabbits & cavies – www.arba.net
(good pictures of different breeds of rabbits & guinea pigs)
Interested in heritage breeds? Check out the American Livestock Breeds Conservancy - ALBC-USA.org
National Center for Home Food Preservation
www.UGA.edu/nchfp

4-H WEBSITES

<http://4h.missouri.edu/>
<http://outreach.missouri.edu/bollinger/>
<http://www.4-h.org/>
<http://www.ext.vt.edu/resources/4h/virtuafarm/main.html>
http://www.4-hmall.org/4H_Mall/Home/Default.asp
<http://www.national4-headquarters.gov/>
<http://www.n4hccs.org/>

When searching for 4-H related information online, after you type your request add “extension” or “university” to get research based information from state Extension Services nationwide.

Willie Saputo,

4-H Youth Program Assistant

4-H Youth Specialist

UNIVERSITY OF MISSOURI **Extension**

Bollinger County
304 High Street (PO Box 19)
Marble Hill, MO 63764
Phone (573) 238-2420/Fax: 238-2756
<http://outreach.missouri.edu/bollingerco@missouri.edu>
saputow@missouri.edu

*University of Missouri, Lincoln University, U.S. Dept. of Agriculture & Local University Outreach & Extension Councils Cooperating.
University Outreach & Extension does not discriminate on the basis of race, color, national origin, sex, sexual orientation, religion, age disability or status as a Vietnam-era veteran in employment or program.*