

BOLLINGER COUNTY IN-4-MER



Calendar of Events

OCTOBER

- 1 – Leopold Club meeting
- 3-4 – Madison County Fair
- 5-10 – National 4-H Week
- 9 – 4-H Council meeting
- 10-11 – Relay for Life
- 11– 4-H Appreciation Day
- 13 – Rodeo Club meeting/trash pickup
- 15-16 – Camp Food & Fitness
- 17 – County Line meeting & hayride
- 18 – Tree Planting/Marble Hill
- 22 – SEMO 4-H Rodeo Assn. Board meeting
- 27 – Cheerful Workers meeting
- 31 – Project reports due

NOVEMBER

- 1 - Missouri State Recognition Forms Level 1 & 2 due
- 29 – Christmas in the Foothills

2009

- Jan. 8 – 4-H Council meeting
- Jan. 17– Annual Recognition Banquet
- Feb. 1 – Missouri State Recognition Level 3 forms due
- Feb. 16-18 – Legislative Academy
- March 6-8 – Youth Civic Leaders Summit
- March 18-21 – 4-H Global Conference
- June 3-5 – Annual 4-H Congress



State 4-H Congress
June 3-5, 2009
University of Missouri,
Columbia

6th Annual 4-H Camp Food & Fitness

November 15-16, 2008

MU campus

Check 4-H website for details & registration materials - <http://4h.missouri.edu/events/foodandfitness/>. Registration due in State 4-H office by October 15. Program limited to 40.

Primary audience is youth age 12-14 enrolled in 4-H Foods projects but young people associated with any Extension program are eligible to attend if they meet the age criteria. Cost of \$70/person includes lodging at Quality Inn Hotel, meals & take home materials.

Start time is 10 am, 11/15; camp adjourns at 10:30 am on 11/16.

4-H faculty and staff serve as chaperones.

Here's cool stuff youth get to do:

- Prepare & eat steak dinner
- Tour MU meats lab
- Learn about new technology in body scanning for clothing sizes and fitness
- Learn about MyPyramid – food/nutrition guidance
- Increase physical activity (each participant will receive a pedometer)

Missouri CattleWomen Beef Ambassador Contest

Deadline: 11/1/08

www.mocattle.org/MCW/missouri/cattlewomen.htm

Contest consists of a 5-8 minute speech, 5 minute question period & 10 minute personal interview. Held in conjunction with the MO Cattle Industry Convention. Open to students 16, but not older than 19, by Jan. 1, 2009. State winner earns expense paid trip to compete for over \$5,000 in prizes in the National contest the fall of 2009, receives \$250 and beef apparel. Cash prizes for 2nd & 3rd also.



“Scene” out & about

... at the SEMO Fair



County Line Club Leader Donna Mouser & member Hope Massey (in her lucky pink boots) with Nutter Butter.

**PROJECT REPORT
FORMS DUE**

OCTOBER 31, 2008.

This form is available (hard copy) from the Extension Office or your Club Leader.

For your convenience a report form, with an instruction sheet, is attached to this newsletter. Make more copies as you need them.

The form can also be found on the Bollinger County Website

<http://extension.missouri.edu/bollinger>

You can type your information on the form on the website and then print a hard copy to submit.

Complete this form for EACH completed project.

Be sure to get the appropriate signatures before turning in the form(s).

You may make the project report(s) part of a scrapbook record if you want and submit it for the 'best book' competition; but it is perfectly acceptable to complete and fill out just the project sheets to qualify for your annual awards.

GIS Course available

Virtual campus course for 4-H groups – no charge!!

Getting Started with GIS Web course available on the ESRI Training/Education Web site. For details/access to the course, go to http://training.esri.com/acb2000/showdet.cfm?DID=6&Product_ID=915

SEMO Fair Photos



Mallory James placed 2nd in Showmanship at the SEMO Fair.



Ben Lincoln leads his Champion steer at the SEMO Fair.



Kenny Cochran showed goats this year.



Samantha Welker provides H2O to her Brangus.



Bath time for Paul Lochirco's animal.



Memphis South Fair

Traveling Cheerful Workers Club Member Michaela Haley showed Charolais cattle at Memphis. One Heifer stood 1st and won Grand Champion Charolais heifer in the Junior Show; stood 1st in Open Class, winning Senior Champion there and going on to win Grand Champion honors in the Grand Champion drive. Her bull stood 1st in Open Class and was judged Senior Calf Champion.

Michaela also placed in the top 10 for showmanship.



Happy October Birthdays!

Aaron Bailey, Micah Bristow, Donna Calvert, Dusty Cook, Magnolia Douglas, Donna Dowdy, Taylor Eftink, Garrett Faulkner, Amber Garland, Kimber Garner, Ryan Lewis, Dawn Lincoln, Gary Lincoln, Matthew Lincoln, Melissa Lincoln, Will Lincoln, Kirsten Mungle, Carolyn Seabaugh, Margaret Seabaugh, Kayla Setters, Keith Shrum, Kai-Lea Troyer, Betsy VanGennip, Ivan Welker, Mike Welker, Kelli Williams



October 2008

4-H meetings include:

Wednesday, Oct 1 –

Leopold 4-H – School Cafeteria, 6:30 pm/Clovers; 7 pm /Business Meeting

Monday, October 13

Ride if You Dare 4-H Rodeo Club; 7 pm, Patton Saddle Club – **Trash Pickup starting at 5 pm.**

Friday, October 17

County Line 4-H Club Meeting & Hayride – meet by 5 pm at Donna Mouser's home for the hayride to Camp Jennings.

Monday, October 27 –

Cheerful Workers' Club, 7:30 pm Sedgewickville Lutheran Church

- **ABC, Castor River Catfish, Scopus Go Getters, Crooked Creek & Dino-Bites 4-H Club meeting dates/times to be announced**



**Community Service Opportunity
Tree Planting Day**

18 trees will be replanted in Marble Hill on Saturday, October 18. If you would like to bring a shovel & assist in this project, sign up at city hall during regular business hours. Jack Watt will be overseeing this endeavor – trees are supplied by Forest Releaf Organization.



**Family Horse Jamboree
Camping Event
November 7-9**

University of Missouri Extension will host a family horse camp & trail ride beginning the evening of Friday November 7th, continuing through Sunday November 9th, at the Big Creek Trail Ride, Hartshorn, MO. In addition to family trail rides, clinics will be offered on the following topics: equine massage, in-hand trail, jousting (Maryland style), horsemanship, mounted clinic, horse basketball and other challenge activities. Families will need to bring their own horses to this event. Registration for this event will be accepted until October 24, 2008. Please contact Jenny Flatt at 417-256-2391 or flattj@missouri.edu for more information. The registration form can also be found online at: <http://extension.missouri.edu/howell/>.

**LEGISLATIVE
ACADEMY
Missouri 4-H Legislative
Academy
Jefferson City
Feb. 16-18**

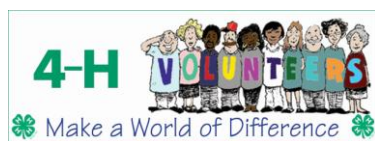
(Only cost for selected delegates is transportation to/from Jefferson City.)
Applicants **MUST** be able to attend the entire Academy; 14-20 years old on December 31st, and a State 4-H Council member, Youth Futures alumni, Mizzou 4-H Collegiate 4-H members, state award winner (Key Award or National Congress) or recommended by their local 4-H youth specialist. Between 8 and 12 young people will be selected. Selection will be based on 1) satisfactory completion of the application; 2) personal interview with the selection committee and 3) ability to positively represent Missouri 4-H to state-level decision makers and contributors.

Applications available at <http://4h.missouri.edu/events/academy/#forms>



**Kodak Moments –
do you have pictures
you'd like to share?
Accomplishments
I can publish?**

Send them to me at saputow@missouri.edu
&
I'll be glad to include them
in future newsletters.



VOLUNTEERS!
Volunteer
Orientation
MUST be completed
by June 2009 in
order to maintain
your volunteer
status with 4-H &
can be completed
on-line as follows:

There are seven (7) units. Volunteers may start the training, log out & back in to resume training at their convenience. It takes about 2- 2.5 hours; not counting time spent exploring optional resources & activities.

A print (self-study) version will be listed as a main menu option in the online orientation course. Content is the same without web-related directions. Volunteers electing to download & read print orientation materials still need to complete the online quiz to fulfill the requirement. The link to the quiz is listed as a main menu option in the online course. The quiz is NOT scored; however, volunteers must complete the online form in one single session. To log on: Open a web browser, such as Internet Explorer or Mozilla Firefox

- Log on at <http://blackboard.missouri.edu>
- Select [Login]
- Enter a username of **_kids**
- Enter this password:
volunteer
- Select [Yes] any time the security information box appears to ask if you want to display non-secure items
- Select this link located on the left side of the screen:

[Online 4-H Volunteer Orientation]

- A welcome screen appears to guide through the course

Required reading sections include:

1 - History; 2 - Youth Development and Essential Elements; 3 - Learning Life and Project Skills through Experiential Learning; 4 - Ages and Stages; 5 - Competition; 6 - Character 7 - Safety & Closing Remarks

This section includes closing remarks and credits. **Link to Required Quiz** This link takes the participant to the required, online quiz housed on the Surveymonkey.com web site. All feedback is confidential & used to improve the volunteer orientation & Missouri 4-H volunteer program.



YOUTH CIVIC LEADERS
SUMMIT

March 6-8, 2009

(Friday evening - Sunday morning)

Windermere Conference
 Center

\$100/person

The Summit is a statewide weekend retreat for young people ages 13-18 who are active or aspiring leaders & decision-makers in their communities & the adults who support them. Youth active with 4-H Councils, Junior/ Senior Leaders, Youth EXCEL or similar leadership programs are encouraged to attend, as well as adult staff & volunteers.

*Specialized training offered for Council Youth Liaisons & youth representatives on extension councils.

Team registration deadline is
January 15, 2009.

Beginning Dec. 1, counties may register one or more teams, which may consist of up to 8 youth & 2 adults (10 people total).

Event capacity limited to 120.

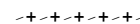


2009 Kansas City 4-H
Global Conference

March 18-21

The four states that coordinate and implement this conference (Kansas, Arkansas, Oklahoma and Missouri) are using an online registration process again this year. The online site is hosted by Kansas State University 4-H. Registration cost is \$260 for youth and \$325 for adults.

- Youths age 15 & older can go online & begin browsing workshop/tour selections December 1.
- January 1 – February 1 is the online registration period. During this time youths & chaperones can register for the conference & make their own workshop/tour selections.



2009 CWF Trip

CWF 2009, June 27-July 7, for 4-H Teens, 14-19, is a leadership program at the National 4-H Youth Conference Center near Washington, DC. Participants learn & practice skills to become better citizens in the workshops & field trips engaging with 4-H youth from other states. \$1600 trip fee includes all travel expenses on chartered bus, tours, most meals, lodging at the 4-H Center & hotels & registration for the CWF conference. Trip also includes 2 days in New York City with special tours & events. Trip details, application & payment info can be found on the Clinton County website

<http://extension.missouri.edu/clinton/> **Registration deadline is November 15, 2008.** For more info contact 4-H Youth Specialists Becky Simpson 660-663-3232 or Debbie Davis 816-539-3765.



**4-H
Appreciation
Day
Saturday
October 11
11:30 am - 3:30 pm
The Ivey
House
(Castor River
Conservation Area)**

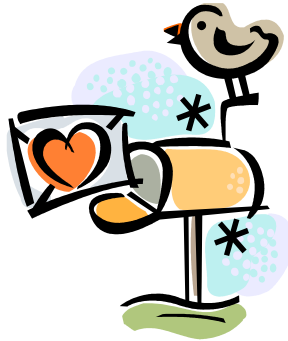
County Road 820
(approx. 12 miles from Marble Hill on Hwy. 34 West, on the right; travel about 2.2 miles on 820, make a right turn on the drive just past the white picket fence and pine trees & follow the lane to the cabin)

Come have lunch & spend the afternoon outdoors!

Bring a white cotton t-shirt for each attendee (for tie-dyeing) & your fishing license, pole & bait if you'd like to fish in the stocked pond. There will be a variety of activities & lunch will be provided.

Please call the Extension Office at 238-2420 to RSVP before the end of the day on Wednesday, October 8th.

Don't want to run out of food!



Get Will Wishes

Billy Lema's grandpa, Ed Lema, had heart surgery last week. He is in St. Francis Hospital in Cape Girardeau, undergoing therapy. Cards would be a welcome diversion ... you can send them to Ed Lema, Rt 1, Box 320, Marble Hill, MO 63764

Keep Melba Moore in your thoughts too. She is the Photography Project Leader for Cheerful Workers (and Deb Hahs Mom) & has had knee surgery again.

*Willie Saputo,
4-H Youth Program Assistant*

4-H Youth Specialist

UNIVERSITY OF MISSOURI
Extension
Bollinger County
304 High Street (PO Box 19)
Marble Hill, MO 63764
Phone (573) 238-2420
Fax: (573) 238-2756
<http://outreach.missouri.edu>
bollingerco@missouri.edu
saputow@missouri.edu

4-H Ride if You Dare Rodeo Club Meeting



**Monday
October 13**
Trash Pick Up starts at 5 pm. Meeting & refreshments to follow.
Patton Saddle Club Building

**COUNTY LINE
4-H Club
Halloween Party
& Hay Ride**



**Friday
October 17**
Meet at Donna Mouser's home by 5:00 pm to ride out to Camp Jennings for fun & refreshments. Members encouraged to invite a friend to attend. Call Donna at 783-4330 with questions.

*University of Missouri, Lincoln University, U.S. Dept. of Agriculture & Local University Outreach & Extension Councils Cooperating.
University Outreach & Extension does not discriminate on the basis of race, color, national origin, sex, sexual orientation, religion, age disability or status as a Vietnam-era veteran in employment or programs.*