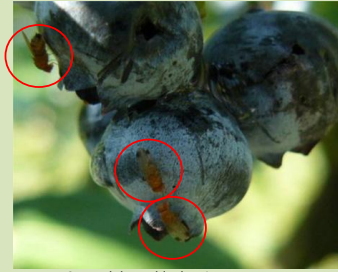


Spotted Wing Drosophila Insecticide Cost-Share

Sponsored by Mo. Dept. of Ag. through Specialty Crop funding



SWD adults on blueberries Photo: Canada Ag

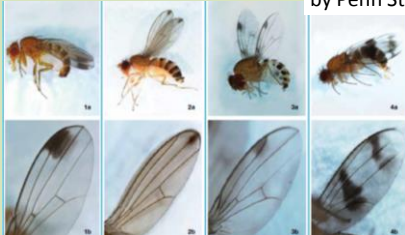
SWD Insecticide Cost-Share

- Reimburse 50% of insecticide cost
- Up to \$750 per farmer
- 2015 and 2016 seasons
- Small fruit crops targeted
 - Blackberries, raspberries, blueberries, elderberries, late-season strawberries

Requirements

- Grow susceptible fruit for sale
 - Bearing age
- Training to id SWD

SWD Overview and Id
by Penn State Extension



Requirements

- Grow susceptible fruit for sale
- Training to id SWD
- Monitor for SWD
 - Traps
 - Fruit sampling
 - Degree Day model
 - USPest.org degree day



Photo: Univ. N. Hampshire

Requirements

- Grow susceptible fruit for sale
- Training to id SWD
- Monitor for SWD
- Proof-of-purchase price
 - Insecticides
 - Rotate insecticide classes
 - Insect-barrier fabric an option- <1mm mesh



Insect netting can exclude SWD

Cost-Share Insecticide Options

- Product registered for sale in Missouri?
- Labeled for crop site?
 - Specific berry crops
 - Bush berries
 - Cane berries
 - Low-growing berries
- List of products



Photo: University of Minnesota
Photo: University of Missouri

Requirements

- Grow susceptible fruit for sale
- Training to id SWD
- Monitor for SWD
- Proof-of-purchase price
- Pesticide applicator's license

Pesticide Applicator License

- Safety education
- Need if selling ag products (berries, vegetables, flowers, etc.)
- Private Applicator License common
 - Local Extension office
- Can train staff in WPS (Worker Protection Standards) on safe practices
- Can purchase RU products

SWD Insecticide Cost-Share

- Sell susceptible fruits
- Recognize SWD
- Monitor for SWD
- Proof-of-purchase price
- Pesticide applicator's license
- 50% cost-share
- Up to \$750 per grower

Request Information Packet

Missouri Dept. of Agriculture
 Anastasia Becker
 573.526.0837
Anastasia.becker@mda.mo.gov