

## DEPARTMENT III - LIVESTOCK

### What's The Real Purpose Of Youth (4-H & FFA) Livestock Projects?

One purpose is to teach young people how to feed, fit and show their animals. The more important purpose is to provide an opportunity for personal growth and development of the young person.

Therefore, the purpose of the youth livestock program (4-H and FFA) is to provide opportunities for young people to develop character. The character traits identified and some practices (exercises) that may build character follow:

1. **Trustworthiness - includes honesty, promise keeping and loyalty.**
  - daily feeding, watering of animals (promise keeping)
  - adheres to possession deadlines (honesty)
  - adheres to withdrawal times on drugs and de-wormer; and uses only approved drugs
2. **Respect - includes courtesy and proper treatment of people and things.**
  - proper care and handling of animals, treat humanely
  - listens to and follows advice of advisors
  - recognizes that animal projects are dependent on 4-H'ers to provide daily feed and water
3. **Responsibility - includes the pursuit of excellence, accountability and perseverance.**
  - daily feeding and watering (even on the busy, difficult days)
  - goes beyond providing the daily needs of the animal in giving additional time and attention to produce a winner
  - adheres to deadlines for entry forms and for arrival at livestock shows
  - never gives up in the show ring (perseverance)
4. **Fairness - involves consistently applying rules and standards appropriately for different age groups and ability levels.**
  - feeds only approved livestock rations
  - only the appropriate use of approved drugs
  - accepts winning or losing with grace
  - conduct in the show ring follows recommended procedure
  - fitting and grooming of animals follows recommended procedures
5. **Caring - promoting the well being of people and things in a young person's world. It denotes action and not just feelings.**
  - daily feeding and watering
  - provides clean barn/stall for animal
  - treats animal humanely at all times
6. **Citizenship - includes making the home community and county a better place to live for themselves and others.**
  - accepting instructions
  - winning and losing with grace
  - helping others at stock shows
  - teaching younger members
  - treating animals humanely
  - ensuring that your meat animal is safe for consumption

## OWNERSHIP OF ANIMALS - 4-H/FFA STANDARDS

All project animals must be owned by the date shown below. This is required for exhibition by the 4-H member and FFA member.

January 16	- Steers
May 1	- Beef breeding animals
January 1-June 1	- Bucket calves
May 1	- Rabbits (except meat rabbits 4-weeks before fair date)
May 1	- Market hogs and purchased boars and gilts
Jan 1-March 31	- Breeding swine farrowed
May 23	- Meat and purchased dairy goats
May 23	- Market lambs
July 1	- Purchased ewes and rams

**Swine Show Notes:** Gilts shown as breeding stock CANNOT be shown as a market hog.

**Beef Show Notes:** If a calf has to be tied to the fence because it is not tame enough to lead, it will be placed at the bottom of the class. The superintendent of the beef show has the authority to dismiss any animal if safety is compromised in any way.

### General Rules and Regulations

1. **Pre-entries are highly recommended.** Pre-entry and buyer contact forms will be mailed in mid-June or available in the Extension Office. Pre-entries due July 13, 2009. Exhibitors will still be able to register at the fair.
2. Entry fees for Beef and Bucket Calves - \$5 per head, Open Show Calves - \$15 per head; Hogs, Sheep & Goats - \$3 per head.
3. **Bedding will be available at cost – No straw allowed except sheep. Beef will be assigned stalls in barn.**
4. Health certificates will be required to be shown to respective superintendents **before unloading** for all sheep & goats. Health certificates are no longer needed for beef cattle or swine as long as they do not cross state lines.
5. Livestock may be exhibited by regularly enrolled 4-H and FFA members of Audrain, Callaway and Monroe counties. 4-H and FFA members from the state of Missouri are invited to exhibit in our Open Junior Beef Show and Open Swine Show. 4-H and FFA members from reciprocating counties are invited to exhibit in our Sheep Show. (It is the responsibility of the exhibitor to bring a copy of their fairbook, or forward it to the Audrain Extension Center prior to the fair. Failure to do so could result in premiums being withheld.) 4-H and FFA members from reciprocating counties are invited to exhibit in our Horse Show.
6. All animals to be sold at the livestock sale MUST have been shown at the 2009 Audrain 4-H & Youth Fair.
7. **Numbers will be drawn for sale order in each division.**
8. The 4-H or FFA members are expected to show all livestock entries unassisted. Exceptions may be made by the livestock committee: i.e. cases where the owner may be exhibiting two (2) animals or because of illness is unable to exhibit or sell, in which case another eligible 4-H or FFA member from the same county may show the animal, etc.
9. Only members of an Audrain County 4-H Club or FFA Chapter showing in this department is eligible to win the showmanship and/or stockmanship awards unless otherwise stated in the division rules. The winners will be selected based on the criteria listed in each division.
10. All livestock animals showing for champion must have received a blue ribbon in their class.
11. Failure to comply with general fair rules, general livestock rules, or division special rules will result in forfeiture of all premiums.
12. Registration papers (or applications for) will be required on all purebred breeding stock shown in beef and swine.
13. If a calf has to be tied to fence in order to show safely, calf will be dropped to bottom of line. Superintendent will make decision.
14. To determine the "Most Points" awards for livestock, members will receive points based on the point value for each ribbon received plus 15 additional points for an overall grand champion animal and 10 additional points for an overall reserve grand champion. No extra premium money will be paid for champion or reserve champion. Only members of an Audrain County 4-H Club or FFA Chapter are eligible for the "Most Points" award.
15. All stalls are cleaned by members and must be approved by the beef, sheep/goats or swine committee upon removal of animal. **Failure to clean stalls could result in premium forfeiture.**
16. Bucket calf project animals must be shown in bucket calf class, not in breeding beef.
17. Beef animals must have halters and neck ropes. All animals should be stalled in livestock barns in designated areas.
18. All livestock/horse trailers should use the east entrance and should park in designated areas (north of the northwest arena light pole to the north side of the announcers stand and east of the livestock complex.

# BEEF SHOW

Superintendent: Brent Schuering

## DIVISION 1 - BEEF FITTING DEMONSTRATION

11:00 a.m. to 12:30 p.m. In the show ring

## DIVISION 2 - BEEF IMPROVEMENT PROGRAM

### Special Rules:

1. Participation in the Beef Improvement program is required of all 4-H and FFA members who show steers and are: age 18 years and younger as of January 1 and enrolled in the Audrain 4-H Beef Project or are Audrain county FFA members with their steer recorded as part of their SAEP). Any steer that was officially weighed in is eligible to be entered in the class.
2. Official beginning weight is the weight recorded at weigh-in.
3. Official end weight is the weight taken at the Audrain County 4-H and Youth Fair. All steers must be weighed dry! **Steers must be weighed in between 9:00 and 11:00 a.m. Steers are not to be washed until after they are weighed in.**
4. Top ten steers will be selected on the basis of highest average daily gain and prizes of 10-9-8-7-6-5-4-3-2-1 dollars awarded. Ribbons to all entrants on the basis of: Blue – 2.75+ ADG; Red – 2.75 ADG; White – up to 2.00 ADG. A plaque will be given to the top steer. No premium points will be awarded on the Beef Improvement class.

## DIVISION 3 - BEEF SHOW

### Special Rules:

1. 4-H and FFA members must be enrolled in a beef project, have met all project requirements and own their animal(s). County show classes are open to members from Audrain, Callaway and Monroe counties only. Open show classes are for 4-H and FFA members in Missouri.
2. Beef entries must be in place by 11:00 a.m., Saturday, July 18.
3. The beef steer show shall consist of a maximum of eight weight classes. Steers will be divided into nearly equal size weight classes.
4. Premium points awarded to county classes only on beef exhibits and will be as indicated in each class.
5. A member may not make more than two (2) entries in a class or five (5) entries in the Beef division. **A MEMBER MAY SHOW A TOTAL OF TWO (2) STEERS.**
6. Entries to steer classes must have been born between January 1 and September 1, 2008.
7. Steer weigh-in will begin at 9:00 a.m. on Saturday, July 18. **No steer may be washed prior to weigh-in.** No reweighs and no steers weighed after 11:00 a.m.
8. Order of show will begin with Class 1 and run consecutively in each breed. Breeds will show alphabetically with crossbred heifers showing last. The “All Other Breeds” will show just prior to the Crossbreds. Steers show by weight only.
9. Breed classes will be determined the day of the beef show. If there are fewer than 3 females in a breed they may show as “All Other Breeds” or as Crossbreds.

10. Ring Showmanship criteria: Show ring appearance of animal; Show ring appearance of exhibitor; Courtesy to judge; Courtesy to other exhibitors; Posing and parading in ring. Showmanship classes are: Juniors – 8 to 13 years old; and Seniors – 14 years old and over; Audrain County participants only. Exhibitors will be judged during the Heifer and County Steer Shows. The showmanship judge will choose 5 individuals from each division during the shows to come back for a final drive at the conclusion of the County Steer show. Exhibitors chosen for the final drive may use any of their own animals.
11. Stockmanship criteria: Neatness and cleanliness of stall; Neatness and cleanliness of animals outside show ring; Cleanliness and neatness of exhibitor outside show ring. Stockmanship will have two (2) classes: Junior – 8 to 13 years old and Senior – 14 and over years old. A plaque will be awarded to the winner of each class. Club/Chapter Stockmanship award will be a plaque displayed at the 4-H Center
12. The exhibitor's name and club/chapter should be on all stalls. Check with superintendent about stall assignments.
13. Beef animals must have halters and neck ropes.
14. **Numbers will be drawn for sale order in each division. (Numbers are to be drawn as participants register for the show – Sale numbers will be adjusted after Grand & Reserve are selected) Grand and Reserve in each Species will sell first – than sales will follow the order of numbers drawn.**

### Sub-Division 3A - Breeding Classes

<u>CLASSES</u>	<u>County Class</u>	<u>Open Class</u>	<u>Point Value</u>
	<u>Number</u>	<u>Number</u>	<u>(County Only)</u>
Jr. Heifer Calf (calved between 1/1-4/30/09)	1	51	21-14-7
Sr. Heifer Calf (calved between 9/1-12/ 31/08)	2	52	27-18-9
Summer Yearling Heifer (calved between 5/1-8/31/08)	3	53	30-20-10
Late Jr. Yearling Heifer (3/1/08-4/30/08)	4	54	36-24-12
Early Jr. Yearling Heifer (Calved 1/1-2/28/08)	5	55	36-24-12
Sr. Yearling Heifer (calved between 9/1-12/31/07)	6	56	45-30-15
Champion Heifer of Breed			Plaque
Reserve Champion Heifer of Breed			Plaque
Supreme Champion Female			Special Award
Beef Cow and Calf	7	57	45-24-12
Dairy Heifer/Cow Class (breakdown day of show)	12	62	30-20-10

### **Sub-Division 3B - Beef Steer Classes**

Beef Steer (Will be divided into a maximum of eight classes by weight. Classes posted after weigh-in. Limit 2 entries per exhibitor.) County Show will begin at 4:00 p.m. on Saturday, July 18. Open show will begin at the conclusion of County Showmanship final drive (Approximately 6:00 p.m.)

Club/chapter group of 5 steers (each exhibitor is limited to two steers in the group; premiums paid to the club/chapter.).

<u>County Market Steer</u>	<u>Classes 21, 22, 23, 24, 25, 26, 27, 28</u>	<u>Point Value 36-24-12</u>
<u>County Class Champion Steer</u>		<u>Plaque</u>
<u>County Class Reserve Champion Steer</u>		<u>Rosette</u>
<u>Overall County Grand Champion Steer</u>		<u>Plaque</u>
<u>Overall County Reserve Champion Steer</u>		<u>Rosette</u>
<u>Audrain Livestock Sale Grand Champion Steer</u>		<u>Special Award</u>
<u>Audrain Livestock Sale Reserve Champion Steer</u>		<u>Special Award</u>

<u>Open Market Steer</u>	<u>Classes 71, 72, 73, 74, 75, 76, 77, 78</u>	
<u>Open Class Champion Steer</u>		<u>Rosette</u>
<u>Open Class Reserve Champion Steer</u>		<u>Rosette</u>
<u>Overall Open Grand Champion Steer</u>		<u>Rosette</u>
<u>Overall Open Reserve Champion Steer</u>		<u>Rosette</u>
<u>Club/Chapter Stockmanship award</u>	<u>Class 30</u>	<u>Plaque</u>

NOTICE: If animal is to be shown at the Missouri State Fair the buyer and seller may need to complete a contract immediately after the Audrain County Livestock Sale, if the animal sold for possession. Contracts will be available at the sale. All champions at the Missouri State Fair will be sold in the Sale of Champions. If an exhibitor retains the right to show at the Missouri State Fair and is required to sell as a condition of State Fair winnings, all sale proceeds from the Audrain County Junior Livestock sale will be returned by the seller to the purchaser.

### **Sub-Division 3C – 4-H Bucket Calf Show**

1. Open to 4-H youth age 8-12, enrolled in the Bucket Calf project.
2. Must be in place by 11:00 a.m., Saturday, July 18.
3. Show will be at 12:30 p.m., same day; the animals will be released after the show.
4. Exhibitor may show any breed (including Beef, Crossbred, and Dairy) and any sex.
5. Calf must be born between January 1, 2009 and June 1, 2009.
6. Judging will be based on exhibitor knowledge of feeding, health, grooming, care, etc. and not on quality of the animal.
7. Ribbons will be awarded to all participants. Point value is 21-14-7.
8. Beef superintendent will determine classes. Class numbers are 83, 84, and 85.
9. Limit of two entries per Exhibitor.
10. Entry fee is \$5.00.

## SWINE SHOW

Superintendent: Randy Meyers

### DIVISION 5 - SWINE IMPROVEMENT

#### Special Rules

1. Open to all Audrain County 4-H and FFA members who are enrolled in the Swine Project. Any swine project animal, which was officially weighed-in, ear notched (using universal system) and reported to the Extension Center by May 13, 2009 is eligible.
2. Official beginning weight is as of April 30-May10, 2009.
3. Official end weight will be taken at the Audrain County 4-H Fair on Tuesday, July 21, approximately 9:00 a.m. - 12 Noon.
4. Each participant may bring in 2 market hogs for weigh in

### DIVISION 6 - SWINE SHOW

#### Special Rules

1. 4-H and FFA members must be enrolled in a swine project, have met all project requirements and own their animal(s). County show classes are open to members from Audrain, Callaway and Monroe counties only.
2. Hogs need to be in-place by 12 Noon at the fairgrounds Tuesday, July 21. Market hogs must be weighed by 12 Noon July 21. All market hogs will be weighed from 9:00 a.m. – 12 Noon.
3. A member may make two (2) entries per class and exhibit a maximum of 10 head in the division. A member may enter a maximum of 3 market hogs. Show will start at 4:00 p.m. Tuesday, July 21.
4. Market hogs must have been farrowed after January 1, 2009. All market hogs must weigh at least 230 lbs. (-5 lbs.). Hogs not meeting the minimum weight will not be allowed to sell. Barrows and gilts will show together in five class groups (x-light, light, medium, heavy and x-heavy weights). Final class weights determined after weigh-in.
5. **Numbers will be drawn for sale order in each division. (Numbers are to be drawn as participants register for the show – Sale numbers will be adjusted after Grand & Reserve are selected) Grand and Reserve in each Species will sell first – than sales will follow the order of numbers drawn.**
6. All breeds of gilts will show together according to age in purebred gilt classes. There will also be crossbred gilt classes. All breeds of boars will show together according to age in purebred boar classes. Gilts shown in a breeding class cannot be shown as a market hog. X-light weight class is for market hogs weighing less than 225 lbs.; they will receive premiums but are not eligible for the livestock sale.
7. Judging will be according to merit with Blue, Red, and White ribbon groups.
8. January pig classes are based on farrowing dates of January 1-31; February classes are based on February 1-28 farrowing dates. March classes are based on farrowing dates of March 1-31. All classes are based on 2009 dates.
9. Show order will begin with Class 101 and show consecutively through 119.
10. Purebred breeding stock needs proof of registration.
11. All entries for livestock sale are required to be Pork Quality Assurance or Show Me Quality Assurance certified.
12. Showmanship (Audrain County exhibitors only) will be judged on the following criteria: Ring Showmanship; Show ring appearance of animal; Show ring appearance of exhibitor; Courtesy to judge; Courtesy to other exhibitors; Presenting pig to judge. Showmanship will have three (3) classes: 8 to 10 years old, 11-13 years old, and 14-18 years old. A plaque will be awarded to the winner of each class. Following regular showmanship, there will be a fun showmanship class called the Open 4-8 year old Showmanship Class. This is for little brothers/sisters, cousins, and friends that spend time in the barn but never get to show themselves. This will be a judged class; however, each participant will receive a ribbon.

13. Stockmanship criteria (Audrain County exhibitors only): Neatness and cleanliness of stall; Neatness and cleanliness of animal outside show ring; Cleanliness and neatness of exhibitor outside show ring. Stockmanship will have three (3) classes: 8 to 10 years old, 11 to 13 years old, and 14 to 18 years old. A plaque will be awarded to the winner of each class.
14. ALL swine must have been ear notched using the universal system and must have been included on the weigh in sheet recorded at your Extension office by May 13, 2009 to show or sell at the Audrain 4-H Fair. All market hogs must be weighed. This is for proof of ownership.
15. Entry fee will be \$3 per head.
16. Name of exhibitor required on all stalls.
17. There will be a Rate of Gain Class. This class will pay the top 10 places.
18. Following the 4-H Market hog classes there will be a home raised class. The gilts and barrows will show together no matter what weight or birth date they have. The only way that there will be more than one class is in the event of several entries.
19. The requirements for the home raised class are that the pig has to have been farrowed on the owner's farm. The 4-H member must own the sow that farrowed the pig. The pig must have been born after January 1 – March 1, 2009. It does not matter if the sow was boar bred or A.I. bred, as long as the member owned the sow.
20. In case of conflicts, final decisions will be made by the Swine Superintendent along with the Fairboard executive committee.

### SWINE SHOW CLASSES

<u>CLASSES</u>	<u>POINT VALUE</u>
<u>MARKET HOGS</u>	<u>27-18-9</u>
<u>Market Hog X-Light weight class</u>	<u>101</u>
<u>Market Hog Light weight class</u>	<u>102</u>
<u>Market Hog Medium weight class</u>	<u>103</u>
<u>Market Hog Heavy weight class</u>	<u>104</u>
<u>Market Hog X-Heavy weight class</u>	<u>105</u>
<u>Grand Champion Market Hog</u>	<u>Trophy</u>
<u>Reserve Champion Market Hog</u>	<u>Trophy</u>
<u>Audrain Livestock Sale Champion Market Hog</u>	<u>Special Award</u>
<u>Audrain Livestock Sale Reserve Champion Market Hog</u>	<u>Special Award</u>
<u>Home Raised Class</u>	<u>106</u>
	<u>Rosette</u>

Classes will be divided into 5 Weight Divisions after weigh-in.  
No X-light market hogs will sell.

<u>CLASSES</u>	<u>PB</u>	<u>XB</u>	<u>POINT VALUE</u>
<u>January Gilt (1/1-31/2009)</u>	<u>114</u>	<u>115</u>	<u>27-18-9</u>
<u>February Gilt (2/1-28/2009)</u>	<u>116</u>	<u>117</u>	<u>27-18-9</u>
<u>March Gilt (3/1-3/31/2009)</u>	<u>118</u>	<u>119</u>	<u>27-18-9</u>
<u>Champion Gilt</u>			<u>Plaque</u>
<u>Reserve Champion Gilt</u>			<u>Rosette</u>

## DIVISION 7 – SHEEP SHOW

Superintendents: Kirk Ekern and Keith Stumpe

### Special Rules:

1. 4-H and FFA members from reciprocating counties are invited to exhibit in our Sheep Show. (It is the responsibility of the exhibitor to bring a copy of their fairbook, or forward it to the Audrain Extension Center prior to the fair. Failure to do so could result in premiums being withheld.)
2. All Sheep must be in place by 12:30 p.m., Monday, July 20. Weigh In and registration begin at 1:00 p.m. July 20. Show will begin at 4:00 p.m. July 20.
3. Sheep exhibited must have been born as follows: 1) Senior Division, September 1, 2008-December 31, 2008; 2) Junior Division, born after December 31, 2008; 3) Yearlings, 1 year and under 2.
4. Not more than two (2) entries may be made by an individual in any one class; a maximum of two (2) breeds may be shown by each individual.
5. Each lamb in the breeding classes must carry the label of the breed association at the time of showing, if registered, and cannot be shown in Market Classes.
6. Showmanship classes for sheep are divided into Senior and Junior classes with the age division to be determined the day of the show. Open to Audrain County exhibitors only.
7. Judging will be according to merit with blue, 27 points; red, 18 points; and white, 9 points.
8. Order of sheep show will be in alphabetical order by breed. Market lambs will show before the breeding classes.
9. A entry fee of \$3.00 per head will be charged.
10. An overall herdsmanship award will be presented to exhibitor with top display of sheep. (Open to any exhibitor.)
11. Sale lambs must be in place by 1:00 p.m., Wednesday, July 22 for pictures.
12. There will be purebred and crossbred classes for females and only purebred classes for rams.
13. Flock consists of 2 yearling ewes, 2 ewe lambs and 1 ram, all the same breed and registered in their respective breed associations and owned by the same exhibitor.
14. Health papers are required for sheep and must be identified to flock of origin using official ID (eartags or tattoos).
15. **Numbers will be drawn for sale order in each division. (Numbers are to be drawn as participants register for the show – Sale numbers will be adjusted after Grand & Reserve are selected) Grand and Reserve in each Species will sell first – than sales will follow the order of numbers drawn.**

### SHEEP SHOW CLASSES

CLASSES		Points
Market lamb, light weight	130	27-18-9
Market lamb, medium weight	131	27-18-9
Market Lamb, heavy weight	132	27-18-9
Champion Market Lamb		Plaque & Rosette
Reserve Champion Market Lamb		Plaque & Rosette
4-H Livestock Sale Champion Market Lamb		Plaque & Special Award
4-H Livestock Sale Reserve Champion Market Lamb		Rosette & Special Award
Yearling Ram	133	27-18-9
Sr. Ram Lamb	134	27-18-9
Jr. Ram Lamb	135	27-18-9
Breed Champion Ram		Rosette
Breed Reserve Champion Ram		Rosette
Yearling Ewe	136	27-18-9
Sr. Ewe Lamb	137	27-18-9
Jr. Ewe Lamb	138	27-18-9
Breed Champion Ewe		Rosette
Breed Reserve Champion Ewe		Rosette
Senior Showmanship		Plaque
Junior Showmanship		Plaque
Overall Herdsmanship		Plaque
Supreme Champion Ram		Plaque & Sheep Blanket
Supreme Champion Ewe		Plaque & Sheep Blanket
Supreme Champion Flock	139	Trophy + Cash Award

## DIVISION 8 – GOAT SHOW

### Superintendents:

### Special Rules:

1. 4-H and FFA member from reciprocating counties are invited to exhibit in our Goat Show.
2. All Goats must be in place by 1:00 p.m., Sunday, July 19. Registration and weigh in begins at 2:30 p.m. July 19. Show will begin at 4:00 p.m. July 19.
3. Not more than two (2) entries may be made by an individual in any one class; a maximum of two (2) breeds may be shown by each individual.
4. Each goat in the breeding classes must carry the label of the breed association at the time of showing, if registered.
5. There will be three showmanship classes for goats (classes to be determined after registration).
6. Judging will be according to merit with blue, 27 points; red, 18 points; and white, 9 points.
7. A entry fee of \$3.00 per head.
8. A herdsmanship award will be presented to exhibitor with top display of goats in Junior and Senior divisions.
9. Sale goats are welcome to stay on fairgrounds from show date to sale date.
10. Sale goats must be in place by 1:00 p.m., Wednesday, July 22.
11. There will be **only purebred classes for males**.
12. Health papers are required for goats and must be identified to flock of origin using official ID (ear tags or tattoos).
13. A goat with any percentage of Boer breeding may not enter a dairy class.
14. A goat may not be entered into more than one category of classes. (Meat and Dairy)
15. **Only wethers will be allowed to sell at auction. Must weigh a minimum of 70 lbs. to sell**

### GOAT SHOW CLASSES

<b>CLASSES</b>	<b>Points</b>
<b>Dairy</b>	
Doe, born Jan. 1-March 31, 2009 or after	140 27-18-9
Doe, born April 1, 2009 - dry	141 27-18-9
Doe born in 2008	142 27-18-9
Doe, first year freshener	143 27-18-9
Doe, Senior	144 27-18-9
Buck, born Jan. 1, 2009 or after	145 27-18-9
Buck, born before Jan. 1, 2009	146 27-18-9
Champion Dairy Goat	Plaque & Rosette
Reserve Champion Dairy Goat	Plaque & Rosette
Junior Showmanship, 8-12 years old	Plaque
Senior Showmanship, 13 years old and over	Plaque
<b>Meat</b>	
Wether, 1 yr. old & under	147 27-18-9
Breeding stock, doe born after 4/1/09	148 27-18-9
Breeding stock, doe born 1/1/09 to 3/31/09	149 27-18-9
Breeding stock, doe born 10/1/08 to 12/31/08	150 27-18-9
Breeding stock, doe born 7/1/08 to 9/30/08	151 27-18-9
Breeding stock, doe born 1/1/08 to 6/30/08	152 27-18-9
Breeding stock, doe born 7/1/07 to 12/31/07	153 27-18-9
Breeding stock, doe born 1/1/06 to 6/30/06	154 27-18-9
Breeding stock, doe born before 1/1/06	155 27-18-9
Buck born after 4/1/09	156 27-18-9
Buck born 1/1/09 to 3/31/09	157 27-18-9
Buck born 10/1/08 to 12/31/08	158 27-18-9
Buck born 7/1/08 to 9/30/08	159 27-18-9
Buck born 1/1/08 to 6/30/08	160 27-18-9
Buck born 7/1/07 to 12/31/07	161 27-18-9
Buck born 1/1/07 to 6/30/07	162 27-18-9
Buck born before 1/1/06	163 27-18-9
Home Raised Breeding Stock (one entry per person)	164 27-18-9
Home Raised Wether (one entry per person)	165 27-18-9
Champion Meat Goat	Plaque & Rosette
Reserve Champion Meat Goat	Plaque & Rosette
Primary Showmanship	Plaque
Junior Showmanship	Plaque
Senior Showmanship	Plaque
Junior Goat Herdsmanship	Plaque
Senior Goat Herdsmanship	Plaque
4-H Livestock Sale Champion Wether	Plaque & Rosette
4-H Livestock Sale Reserve Champion Wether	Plaque & Rosette

## DIVISION 9 - RABBIT SHOW

Superintendent: Mae Fennewald

### Rules:

1. Rabbits to be exhibited must be free of any clinical signs of infection or contagious disease.
2. Entries will be judged on the Danish System.
3. Only 4-H members or FFA members enrolled in the Rabbit project in Audrain and adjoining, reciprocating counties are eligible to compete.
4. Check in at 4:00 p.m. and judging will be at 6:00 p.m., Sunday, July 19 at the livestock barn.
5. All rabbits 6 weeks old and older shall be tattooed in the left ear, including meat rabbits.
6. Any single rabbit may be selected to be shown as an "individual rabbit".
7. Meat rabbits must not weigh over 5 pounds. They must be in owner's possession 4 weeks prior to opening date of the fair.
8. Bring your own feeders, waterers and cages. Rabbits are released after show; however they are welcome to stay at the Fair for exhibition.
9. Sale rabbit can be any rabbit shown.
10. Each member may show 2 entries per class.
11. Most points will be determined by livestock entries.
12. After the premium sale, exhibitors need to help clean their area. Failure to clean area can result in forfeiture of premiums.
13. Space will be provided in livestock barns for rabbits to remain at the fair through Wednesday, July 22.
14. Entry fee \$5.00 per member.
15. All rabbits shall (except meat rabbits) must be in owners possession by May 1, 2009.

### RABBIT CLASSES

### Points

Class 1 Example: Dutch, Netherland Dwarf, Holland Lop, Mini-rex, etc. (4-Class Rabbits)	
1A. Individual Doe (9# and under at mature weight) .....	12-9-6
1B. Individual Buck (9# and under at mature weight) .....	12-9-6
Class 2 Example: New Zealand, Satin, French Lop, etc. (6-Class Rabbits)	
2A. Individual Doe (9# and over at 6 months of age) .....	12-9-6
2B. Individual Buck (9# and over at 6 months of age).....	12-9-6
Class 3 Individual Breed Classes (may be more than one, depending on breeds registered at fair time)	
3A. Any breed with more than eight (8) entries .....	12-9-6
Class 4 Meat Pen of Three (Fryer) .....	12-9-6
Class 5 Home Grown Rabbits	
5A. Home grown 4-class rabbits.....	12-9-6
5B. Home grown 6-class rabbits.....	12-9-6
Class 6 Best of Show (winning rabbits from classes 1-5 will be eligible to compete for Best of Show)	
6A. Best of Show	
6B. Reserve Best of Show	
Class 7 Champion and Reserve champion sale rabbit. (Each member who wishes to sell a rabbit may select one entry in this class)	
7A. Champion Sale	
7B. Reserve Champion Sale	
Class 8 Showmanship	
8A. Member age 8-10	
8B. Member age 11-13	
8C. Member age 14-18	

## DIVISION 10 - AUDRAIN COUNTY 4-H HAM PROGRAM

Superintendent: Junior Worley

### Guidelines:

1. Open to all 4-H Ham Curing projects members. Check-in will be from 4:00 p.m. to 6:00 p.m. on Friday, July 17. Judging will be at 6:00 p.m., Friday, July 17.
2. All hams to be sold at the Audrain County Ham Sale must have been from hogs slaughtered under Federal Inspection.
3. Members selling hams are subject to the same guidelines as those selling livestock including: photographs, contacting buyers, etc.
4. Any ham sold, which is not edible quality, shall cause the seller to fully reimburse the purchaser. After the sale, ham members are required to contact buyers to check on the satisfaction of product.
5. Members may enter their ham in the home cured or commercially smoked division. They may enter in any of the divisions. Members may enter a total of three hams in the fair. Members may only win one plaque per division (115A, 115B, 115C). This only pertains to the individual divisions and not the Sale Championship or the Overall Championship.
6. Work is to be done by the 4-H member, including curing (must hang ham in members possession), shaping and aging.
7. Members selling their ham must sell the high point ham they exhibited at the fair.
8. **Numbers will be drawn for sale order in each division. (Numbers are to be drawn as participants register for the show – Sale numbers will be adjusted after Grand & Reserve are selected).**

## DIVISION 11 - POULTRY SHOW

Superintendent: Mike Bruce

### Rules:

1. Poultry check-in 5:00 p.m. Monday, July 20. Show will be at 6:00 p.m., Monday, July 20.
2. Exhibitors will be limited to three (3) entries per class.
3. Exhibitors are encouraged to bring own cage or pen and assume responsibility for care.
4. You must be a 4-H or FFA member in good standing to show.
5. Awards – ribbons – blue, red, white. Points: 12-9-6.
6. Pullorum-Typhoid testing will be available at registration. Poultry must have no signs of contagious or infectious disease. Poultry must have a VS Form 9-2 (or similar certificate) showing a negative Pullorum-Typhoid test within the past ninety (90) days, or must originate from a flock approved by the national Poultry Improvement Plan (NPIP). Waterfowl are exempt from this testing requirement. A representative of the Department of Agriculture shall have access to the event and may inspect or test poultry as considered necessary.
7. Sponsors of any poultry exhibition must notify the state veterinarian at least thirty (30) days before the exhibition with the names, place, dates and times of the event. The sponsor shall keep records for one (1) year, including owner information, species, breed, type and pullorum-typhoid status of poultry exhibited.
8. Show –6:00 p.m. Poultry are encouraged to stay at Fair for exhibition.
9. Sale Broilers must be in place by 1:00 p.m., Wednesday, July 22.
10. Broiler pen must be kept together and may not show in any other class.

### **POULTRY CLASSES:**

1. Pullet (female less than 1 year old)
2. Hen (female more than 1 year old)
3. Pair of laying hens
4. Young pen (1 cockerel & 2 pullets)
5. Old pen (1 cock & 2 hens)
6. Cockerel (male less than 1 year old)
7. Cock (male more than 1 year old)
8. Pen of 3 Broilers
9. Waterfowl
10. Showmanship

## DIVISION 12 - DOG SHOW

Superintendent: Laura Frazer

### Rules:

1. Dog Check in for the Clover Kid dog show will be 9:00 a.m. Saturday, July 18.
2. Dog Check in for the members participating in the dog show will be 9:00 a.m. Saturday, July 18.
3. Dogs must be kept on a leash at all times.
4. All dogs must be current on their vaccinations. Dogs 4 months and older must have a current rabies vaccination. **A current rabies dog tag or certification from a veterinarian is required at registration to be able to show. NO EXCEPTIONS.**
5. Exhibitors are responsible for cleaning up after their dogs.
6. Clover Kid dog show – Following Small animal show (App. 9:30 a.m.)
7. You must be enrolled in the 4-H Clover Kid project and be in good standing to show in the Clover Kid dog show.
8. Clover Kid dog show is noncompetitive and all participants will receive a green participation ribbon.
9. Dog show – Following Clover Kids Dog Show (App10:00)
10. You must be enrolled in dog project and be a 4-H member in good standing to show in the dog show.
11. Judges decisions are final.
12. Dog show awards: trophies, rosettes, ribbons (blue, red, white). Points: 27-18-9.

### **DOG SHOW CLASSES:**

Showmanship is based on how well the child presents and controls the dog.

1. Showmanship ..... 8 – 10
2. Showmanship ..... 11-13
3. Showmanship ..... 14 & over
4. Grand Champion Showmanship..... (winner from each age group competes)

Obedience is based on the obedience of the dog when given commands (i.e. sit, lay down, and stay) while dog is on a leash.

5. Obedience ..... 8 – 10
6. Obedience..... 11-13
7. Obedience..... 14 & over
8. Grand Champion Obedience ..... (winner from each age group competes)

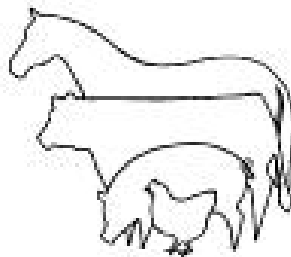
Costume:

9. Costume – Junior Division ..... 8 – 11
10. Costume – Senior Division..... 12 & over

Games consist of three jumps – one tire jump; one over head tunnel; and a set of five poles. This is a timed event.

11. Games – Obstacle Course....8-10
12. Games – Obstacle Course.... 11-13
13. Games – Obstacle Course.... 14 & over

# Come, Share the Fun



## At the Audrain Co. 4-H & Youth Fair

## DIVISION 13 - 4-H & FFA LIVESTOCK AND HAM PREMIUM SALE

Superintendent: Brad Hagan

### Special rules:

1. Only Audrain 4-H and FFA members (age 18 years and under on January 1, 2009) who have completed the particular project (ham, sheep, goat, rabbit, beef, swine or poultry) are eligible to participate. To complete the sheep, goat, rabbit, beef, swine or poultry project members must be current on their Show Me Quality Assurance standard.
2. Members must complete a livestock/ham consignment form and Buyer Contact form by the published date to be eligible to sell. Sellers will be required to purchase 2 pictures of animal/ham. A thank you note and a picture sent to the buyer after the sale is required.
3. **Each member selling at the sale is required to participate in at least two fair clean ups.** Pre-fair clean up is on Sunday, June 28, 2009 beginning at 3:00 p.m.; Pen set-up, Sunday, July 19, 2009 11:30 a.m. – 1:00 p.m., Pre-sale clean up Wednesday, July 22, 2009 at 1:00 p.m. or Post-fair clean up on Thursday, July 23, 2009 beginning at 6:00 p.m.
4. **Numbers will be drawn for sale order in each division. (Numbers are to be drawn as participants register for the show – Sale numbers will be adjusted after Grand & Reserve Champions are selected). Grand and Reserve Champions in each Species will sell first – then sales will follow the order of numbers drawn.**
5. Each member is limited to one (1) animal/pen or ham in the sale. In a cooperative agreement between Audrain and surrounding counties, a member selling an animal or ham at this sale is not eligible to sell another animal or ham at any other county sale. The 4-H and FFA members must represent their own animal or ham.
6. In order to be eligible, the animal or ham to be sold must have been shown at the Audrain 4-H and Youth Fair. Steers must have been weighed at the winter steer weigh-in. Swine weights must have been reported to the Extension Office by May 13, 2009.
7. In order to be eligible, animals must meet the following weight requirements. Steers – 850 pounds minimum, (premium will be paid up to 1400 lbs.); market hog – 230 minimum (premium will be paid up to 300 lbs.); market lamb – minimum 95 lbs. (premium will be paid up to 150 lbs.); goats – minimum 70 lbs.
8. A fee of 3% on premium only and a \$5.00 picture fee will be deducted from the sellers check at the Sale to cover sale expenses and expenses for the Buyers' 4-H Foundation BBQ tickets.
9. All feed additives are to be withdrawn in accordance with label.
10. All animals will be weighed only once.
11. All animals to be sold have the option to stay on the fairgrounds following their respective show but must be in place by 1:00 p.m. sale day. Each seller is responsible for being in line, ready with their animal or ham.
12. Sale sequence will be Sheep, Goats, Swine, Rabbits, Steers and Poultry. Hams will sell interspersed with the livestock.
13. For sheep, goats, hogs and steers this sale is based on premiums. A market specialist will establish a base price for each animal. This price is related to the market value of the animal as presented that day. The seller will receive the difference between the announced sale price and the base price as their premium. The buyer will be required to pay only the premium amount if they desire, in which case the seller retains ownership and may market the animal as they desire. The buyer does have the option to pay the entire purchase price of the animal and require the seller to deliver the animal to the location of their choice. Rabbits, broilers and hams will sell for the dollar amount bid and the buyer will take ownership and may take possession the night of the sale.
14. Audrain County Fair regulations will abide by State Fair Regulations. If an exhibitor retains the right to show at the Missouri State Fair and is required to slaughter as a condition of the State Fair winnings, the seller will return all sale proceeds from the Audrain County 4-H and Youth Fair Livestock/Ham Premium Sale to the purchaser.
15. Each buyer will receive a "We Supported the Audrain County 4-H Livestock or Ham Sale" placard for each animal or ham purchased.
16. Sellers will not receive payment for their animal the night of the sale. Sale proceeds will be mailed in a timely manner.

**NOTE: FFA members selling will follow 4-H rules and regulations (weigh-in, etc.).**

## **2009 ANIMAL HEALTH STANDARDS FOR SHOW**

A complete set of guidelines is on file at the Audrain County University Extension Center in the Courthouse in Mexico.

1. The term health certificate or Certificate of Veterinary Inspection means a legible record made on an official form of the state of origin, issued by an accredited veterinarian, which shows that the animal(s) listed meets the testing, vaccination, treatment and health requirements of the state of destination. The health certificates are good for 30 days from date of issue for cattle, swine, sheep and goats.
2. Animals with active lesions of ringworm with resulting loss of hair or warts easily visible without close examination will not be permitted to exhibit and shall be subject to isolation or expulsion depending upon the nature and seriousness of the disease.
3. The following listed entry requirements on livestock are for exhibition only.

### **CATTLE** Exhibition Requirements for Cattle in Missouri:

- A. Intrastate (cattle in Missouri moving for exhibition only in Missouri).
  1. A health certificate is no longer needed for Missouri cattle.
  2. Brucellosis: No test or vaccination is required.
  3. Tuberculosis: Tuberculosis tests are not required for Missouri Cattle.

### **SWINE** Exhibition Requirements for Swine in Missouri:

1. Intrastate and interstate swine must be individually identified by ear tag, ear notch, tattoo or other approved device  
No tests or health papers required for swine originating in the state of Missouri that have not been taken out of state.

### **SHEEP** Exhibition Requirements for Sheep in the State of Missouri

- A. Intrastate (sheep in Missouri moving for exhibition only).
  1. Sheep must be free of clinical signs of an infectious or contagious disease
  2. All sheep, including wethers, must be accompanied by a Certificate of Veterinary Inspection or a paper copy of an electronic Certificate of Veterinary Inspection showing official identification (ear tag, electronic implant or registration tattoo) as defined in Part 79 of the Code of Federal Regulations. If electronic implants are used for identification, owner/manager must provide electronic implant reader.
  3. No test required

### **GOATS** Exhibition Requirements for Goats in the State of Missouri

- A. Intrastate (goats in Missouri moving for exhibition only)
  1. Goats must be free of clinical signs of an infectious or contagious disease.
  2. All goats, including wethers, must be accompanied by a Certificate of Veterinary Inspection or a paper copy of an electronic Certificate of Veterinary Inspection showing official identification (eartag, electronic implant or registration tattoo) as defined in Part 79 of the Code of Federal regulations. If electronic implants are used for identification, owner/manager must provide electronic implant reader.
  3. No test required

## HORSES

### Exhibition Requirements on Horses

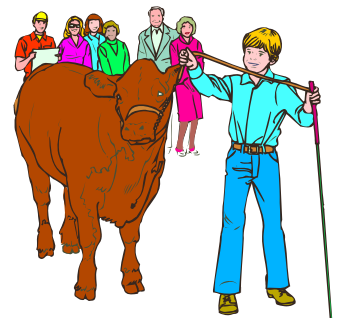
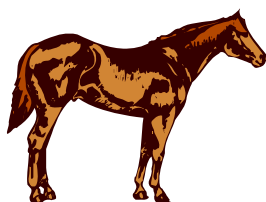
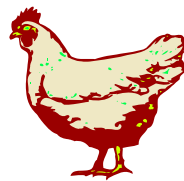
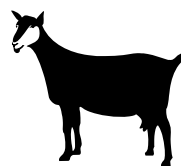
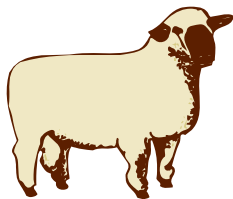
#### 1. Intrastate

- A. All horses to be exhibited must be free of clinical signs of an infectious or contagious disease.
- B. Effective January 1, 1991, all organized equidae (horses, mules, ponies and asses) shows, rodeos, organized trail rides and public boarding stables accepting equidae from other states as well as Missouri origin equidae will require proof of a negative Equine Infectious Anemia (EIA) test within twelve (12) months prior to acceptance.
- C. An official certificate veterinary inspection and Vs Form 10-11 (or later revision) showing graphic descriptions of all marketings needed for identification must accompany each animal showing -
  1. Identification and description of all equidae listed on the certificate.
  2. Negative EIA test date, negative test results, the name of the state/federal approved laboratory and the test accession number assigned by the testing laboratory.
  3. Photocopies or facsimile copies of the VS Form 10-11 may be accepted if they are legible and bear certification by the testing veterinarian or testing laboratory that it is an official copy.
- D. No EIA test is required on suckling foals that are accompanied by their dams. All weaned foals must be tested.
- E. Any sick equidae at an exhibition may be excused by the official inspecting veterinarian. When an official inspecting veterinarian is present, all equidae will be subject to daily inspection. Any equidae entering without proper health certification and tests when required will be excused from the show until proper documents and tests are obtained.

## POULTRY

### Exhibition Requirements for Poultry in the State of Missouri

1. Inspection - All poultry to be exhibited must be free of clinical signs of any infectious or contagious disease.
2. Pullorum-Typhoid Status - All poultry (except waterfowl) exhibited shall be tested negative for pullorum-typhoid within the past ninety (90) days or originate from a flock approved by the National Poultry Improvement Plan (NPIP) or an equivalent program which has been tested within the past twelve (12) months with no change of ownership.



## DIVISION 14 - 4-H HORSE SHOW

Superintendent: Amber Hanneken & Debra Fulkerson

### Special Rules:

1. All members are required to present proof of good standing. The Audrain County 4-H & Youth Fair Horse Show is open to 4-H & FFA members in good standing from Audrain and those counties who's fair is open to other counties.
2. All horse trailers and horses will remain in the designated areas as posted. Please clean your respective area before leaving the fairgrounds.
3. No unnecessary running around the trailers and arena. Keep the gate areas clear.
4. A \$15 entry fee per member will be charged. Show begins at 6:00 p.m. Monday, July 20.
5. Appropriate boots are to be worn in all classes.
6. All exhibitors are required to wear their numbers in a visible place.
7. Exhibitors must show in at least one judged riding class to be eligible to show in game classes.
8. Missouri State 4-H Horse Show Guidelines will be followed with the exception that more than one family member may ride the same horse. They will be limited to one entry per class. A stallion may be exhibited only in the calendar year of their birth.
9. Danish judging system ribbons (blue, red, white) will be presented in the judged classes.
10. Premium money will be paid on Danish ribbons in judged classes with a point value of 27-18-9 to Audrain, Callaway, Monroe and Shelby County Members.
11. Novice riders are first and second year 4-H members enrolled in horsemanship. This must be their first and second year to show in 4-H. Novice (all ages) shall walk-trot only. (Permission required to remain in Novice class beyond second year for special needs members.)
12. ASTM/SEI Equestrian approved helmets are required headgear for **ALL SPEED EVENTS** and are acceptable headgear for all classes.
13. A 5-second penalty for each pole and barrel knocked down. Missing the barrel with the flag in the flag race will result in disqualification.
14. Any class may be divided or combined at the discretion of the show committee. The horse committee has the right to make any changes that may be necessary.
15. **Judges decision is final!**
16. Horse substitutions will be allowed if a horse becomes unable to compete due to lameness, illness or death. A Vet Release must be presented to the show committee for approval.
17. Any exhibitor under the age of 16 must have a parent or guardian with them on the grounds throughout the duration of the show.
18. Excessive spurring, or whipping in the front of the saddle is not allowed.
19. Flat, 2 inch bats only are allowed in game classes only.
20. Please listen to Mexico (KXEO-KWWR) and Columbia (KCLR/Clear 99) radio stations for cancellation due to inclement weather.
21. Any questions concerning the shows, contact: Amber Hanneken (573) 473-6815 or Debra Fulkerson (573) 386-5741.

**NOT RESPONSIBLE FOR ACCIDENTS.**

# AUDRAIN COUNTY 4-H HORSEMANSHIP PROGRAM

July 20, 2009 - 6:00 p.m. Audrain County 4-H Fair Grounds-- Fair Show

All members are required to present proof of good standing. The Audrain County 4-H & Youth Fair Horse Show is open to 4-H & FFA members in good standing from Audrain and those counties who's is open to other counties.

## Entry Fees: \$15 per member

1. Mare & Foal of 2008.....	8-18
2. Yearling Halter.....	8-18
3. Showmanship at Halter.....	14-18
4. Showmanship at Halter.....	11-13
5. Showmanship at Halter.....	8-10
6. English Equitation.....	13-18
7. English Equitation.....	8-12
8. Western Pleasure.....	14-18
9. Western Pleasure.....	8-12
10. Western Horsemanship.....	14-18
11. Western Horsemanship.....	11-13
12. Western Horsemanship.....	8-10
13. Horsemanship (1 <sup>st</sup> & 2 <sup>nd</sup> Year riders, walk/trot only).....	Novice
14. Trail.....	14-18
15. Trail.....	11-13
16. Trail.....	8-10
17. Reining.....	14-18
18. Reining.....	11-13
19. Reining.....	8-10

## Intermission

20. Costume Class.....	8-18
21. Egg & Spoon.....	14-18
22. Egg & Spoon.....	11-13
23. Egg & Spoon.....	8-10
24. Egg & Spoon (1 <sup>st</sup> & 2 <sup>nd</sup> Year riders, walk/trot only).....	Novice
25. Pole Bending.....	14-18
26. Pole Bending.....	11-13
27. Pole Bending.....	8-10
28. Barrels.....	14-18
29. Barrels.....	11-13
30. Barrels.....	8-10
31. Flags.....	14-18
32. Flags.....	11-13
33. Flags.....	8-10

### HIGH POINT AWARDS (Audrain County Youth only)

High Point	14-18, Judged	High Point	14-18, Timed
High Point	11-13, Judged	High Point	11-13, Timed
High Point	8-10, Judged	High Point	8-10, Timed