



# Integrated Pest Management

---

## MISSOURI WEED SEEDS

---

Plant Protection Programs

*College of Agriculture, Food  
and Natural Resources*

Published by MU Extension, University of Missouri-Columbia

\$5.00

IPM1023

This publication is part of a series of IPM Manuals prepared by the Plant Protection Programs of the University of Missouri. Topics covered in the series include an introduction to scouting, weed identification and management, plant diseases, and insects of field and horticultural crops. These IPM Manuals are available from MU Extension at the following address:

**Extension Publications  
2800 Maguire Blvd.  
Columbia, MO 65211  
1-800-292-0969**

#### Authors

Fred Fishel  
Department of Agronomy  
University of Missouri-Columbia

Kevin Bradley  
Department of Agronomy  
University of Missouri-Columbia

#### On the World Wide Web

For this and other Integrated Pest Management publications on the World Wide Web, visit <http://ipm.missouri.edu>.

#### Production

MU Extension and Agricultural Information  
Tammy McNiel, editor  
Dennis Murphy, illustrator

---

## CONTENTS

---

<b>Broadleaf plant families. . . . .</b>	<b>4</b>
<b>Common name index - Broadleaf plant families. . . . .</b>	<b>16</b>
<b>Grass and grasslike plant families. . . . .</b>	<b>17</b>
<b>Common name index - Grass and grasslike plant families. . . . .</b>	<b>19</b>



---

# A PHOTO COMPENDIUM OF MISSOURI WEED SEEDS

---

Positive identification of pests, including weeds, is the first step in a sound integrated pest management program. Knowledge of plant morphological features, such as leaf and stem shape, flower type and color, and the presence of hairs make identification relatively easy compared with relying on seed physical characteristics. On occasion, the agricultural producer and other professionals will be challenged to identify a weed by the features of its seed. This can be a daunting task because of the relatively small size of seed, the change in surface characteristics caused by various processes and subtle color variation within even the same species.

The purpose of this publication is to assist those who attempt to identify weeds by their seed characteristics. This guide is intended not only for agricultural professionals, but also those who are hobbyists, such as FFA members. A hand or pocket lens with a magnification power of 10x will be especially helpful in using this guide. For an idea of relative seed size, each photograph contains a millimeter

ruler. The distance between increments on the scale is 1 mm. Compare your sample with the color images in this guide to assist in your identification. Seed photographs are grouped by their plant taxonomic family for both broadleaf and grass or grasslike weeds. You may also refer to the indexes of common names -- broadleaf plant families on page 16 and grass and grasslike plant families on page 19.

Local University of Missouri Extension Centers can provide information to assist you in pest identification and control decisions. They can help you submit samples to MU's Extension Plant Diagnostic Clinic for positive identification. For specific weed control information in agronomic crop settings, MU publication MP 575, *Weed Control Guide for Missouri Field Crops*, may be purchased through the local centers. For weed control in turfgrass areas, refer to MU publication IPM 1009, *Turfgrass and Weeds*. To order these or any other MU Extension publication, call 1-800-292-0969 or go online at <http://muextension.missouri.edu/>.

Aizoaceae  
(Carpetweed family)

**Aizoaceae**  
**(Carpetweed family)**

This is a small family of plants. Other than carpetweed, only two species of plants in this family are known to occur in relatively isolated locations in Missouri.



Carpetweed  
*Mollugo verticillata*

**Anacardiaceae**  
**(Cashew family)**

In addition to several sumac species, poison ivy is a member of this family and is widespread throughout the state.



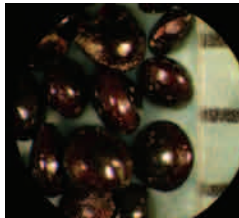
Sumac, smooth; *Rhus glabra*



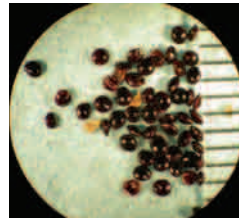
Broadleaf plant families

**Amaranthaceae**  
**(Amaranth family)**

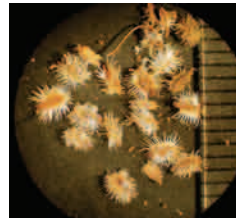
In Missouri the *amaranths* (pigweeds) make up the vast majority of plant genera that occur within this family.



Amaranth, Palmer  
*Amaranthus palmerii*



Pigweed, smooth  
*Amaranthus hybridus*



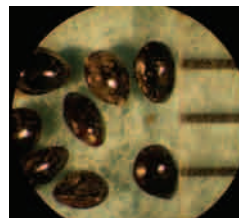
Carrot, wild  
*Daucus carota*



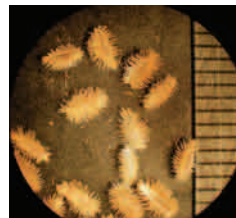
Chervil, wild  
*Anthriscus sylvestris*



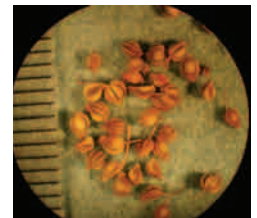
Pigweed, tumble  
*Amaranthus albus*



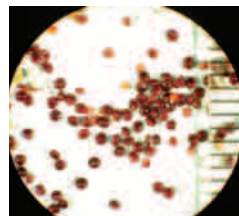
Pigweed, redroot  
*Amaranthus retroflexus*



Hedgeparsley, Japanese  
*Torilis japonica*



Laceflower  
*Ptilimnium nuttallii*



Waterhemp, common  
*Amaranthus rudis*



Poison-hemlock  
*Conium maculatum*

Apiaceae  
(Carron family)

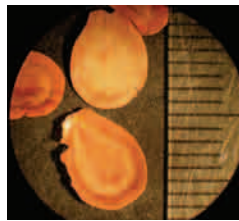
Apocynaceae  
(Dogbane family)

Broadleaf plant families

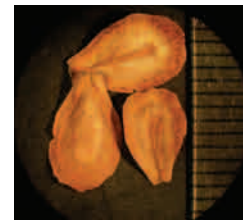
Asteraceae  
(Aster family)

**Apocynaceae**  
**(Dogbane family)**

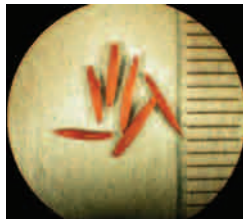
The Dogbane family has relatively few members that occur in Missouri.



Milkweed, green  
*Asclepias hirtella*



Milkweed, honeyvine  
*Ampelamus albidus*

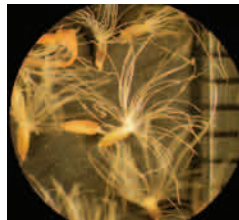


Dogbane, hemp; *Apocynum cannabinum*

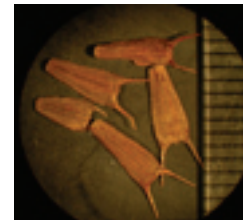


**Asteraceae**  
**(Aster family)**

The aster family is the largest and most diverse family of broadleaf plants in Missouri. Its members include various species of goldenrod, sunflower and thistle.



Aster, white heath  
*Aster pilosus*



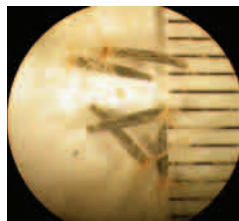
Beggarticks, bearded  
*Bidens aristosa*

**Araceae**  
**(Arum family)**

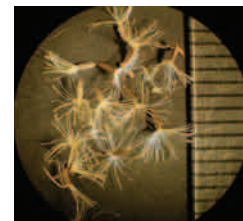
The two most prevalent members of the arum family are jack-in-the-pulpit and the closely related green dragon, both found throughout the state.



Jack-in-the-pulpit  
*Arisaema atrorubens*



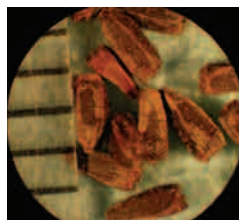
Boneset, false  
*Kuhnia eupatorioides*



Boneset, late  
*Eupatorium serotinum*

**Asclepiadaceae**  
**(Milkweed family)**

All members of this plant family are known as milkweeds. There are at least 15 species of milkweeds that occur in the state.



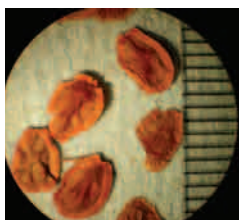
Burnweed, American  
*Rudbeckia triloba*



Burdock, common  
*Arctium minus*



Milkweed, common  
*Asclepias syriaca*



Milkweed, eastern whorled  
*Asclepias verticillata*



Burnweed, American  
*Erechtites hieraciifolia*



Chicory  
*Cichorium intybus*

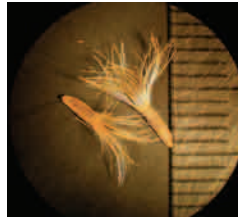
Asteraceae  
(Aster family)

... continued

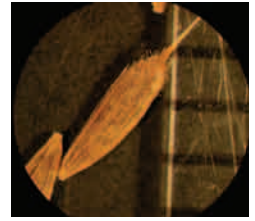
Broadleaf plant families

**Asclepiadaceae**  
**(Milkweed family)**

*continued*



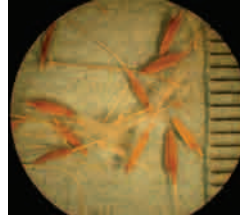
Ironweed, western  
*Vernonia baldwinii*



Lettuce, prickly  
*Lactuca serriola*



Cocklebur, common  
*Xanthium strumarium*



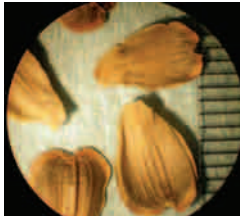
Dandelion  
*Taraxacum officinale*



Lettuce, tall  
*Lactuca canadensis*



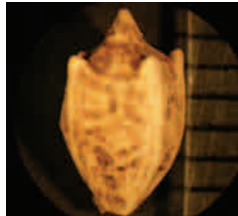
Ragweed, common  
*Ambrosia artemisiifolia*



Dock, prairie  
*Silphium terebinthinaceum*



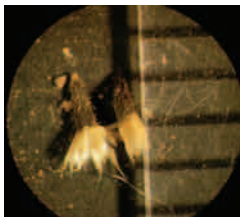
Eclipta  
*Eclipta prostrata*



Ragweed, giant  
*Ambrosia trifida*



Ragweed, lanceleaf  
*Ambrosia bidentata*



Galinsoga, hairy  
*Galinsoga ciliata*



Goldenrod, Canada  
*Solidago canadensis*



Rosinweed, cup  
*Silphium perfoliatum*



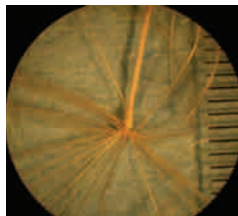
Rosinweed, wholeleaf  
*Silphium integrifolium*



Goldenrod, tall  
*Solidago altissima*



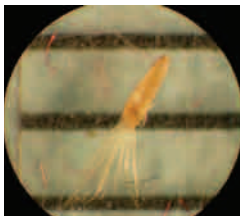
Groundsel, common  
*Senecio vulgaris*



Salsify, western  
*Tragopogon dubius*



Snakeroot, white  
*Eupatorium rugosum*



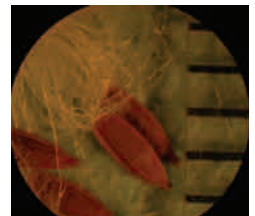
Horseweed  
*Conyza canadensis*



Ironweed, tall  
*Vernonia altissima*



Sowthistle, annual  
*Sonchus oleraceus*



Sowthistle, spiny  
*Sonchus asper*

Asteraceae  
(Aster family)

... continued

# Broadleaf plant families

Brassicaceae  
(Mustard family)



Spanishneedles  
*Bidens bipinnata*



Sunflower, common  
*Helianthus annuus*

## Boraginaceae (Borage family)

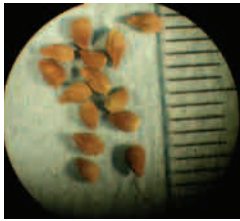
This family of plants also includes several nuisance plants known as "beggar's lice" because their fruits readily attach to clothing and other articles.



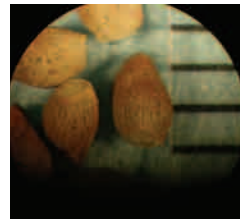
Thistle, bull  
*Cirsium vulgare*



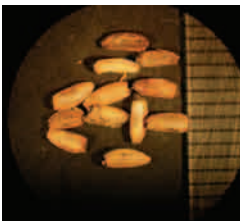
Thistle, Canada  
*Cirsium arvense*



Gromwell, corn; *Lithospermum arvense*



Thistle, field  
*Cirsium discolor*



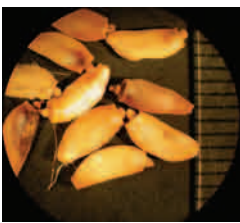
Thistle, musk  
*Carduus nutans*

## Brassicaceae (Mustard family)

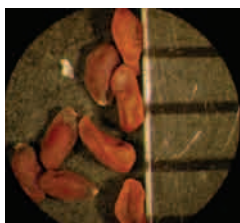
The mustard family is one of the larger groups of plants in the state. Several plants within this family, such as yellow rocket and wild mustard, are common throughout Missouri.



Thistle, Scotch  
*Onopordum acanthium*



Thistle, tall  
*Cirsium altissimum*



Falseflax, smallseed  
*Camelina microcarpa*



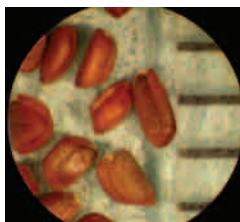
Flixweed  
*Descurainia sophia*

## Bignoniaceae (Trumpet creeper family)

Besides trumpet creeper, there are few species of *catalpa* that are present in this family within Missouri.



Trumpet creeper  
*Campsis radicans*



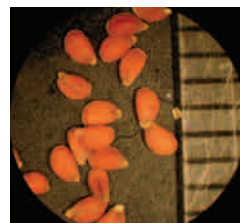
Mustard, hedge  
*Sisymbrium officinale*



Mustard, wild  
*Brassica kaber*



Pennycress, field  
*Thlaspi arvense*



Pepperweed, Virginia  
*Lepidium virginicum*

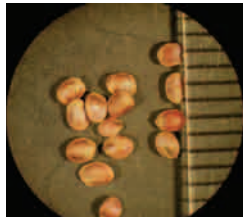
# Broadleaf plant families

Dipsacaceae  
(Mustard family)  
... continued

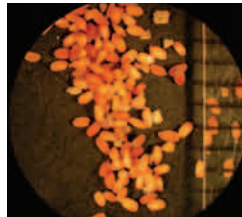
Caryophyllaceae  
(Pink family)

## Brassicaceae (Mustard family)

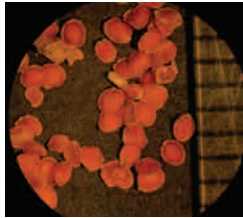
continued



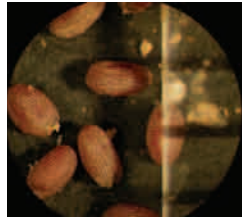
Rocket, yellow  
*Barbarea vulgaris*



Shepherd's-purse  
*Capsella bursa-pastoris*



Sibara  
*Sibara virginica*



Tansymustard, green  
*Descurainia pinnata* ssp.  
*brachycarpa*

## Cannabaceae (Mulberry family)

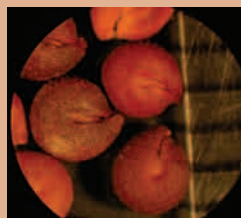
Other than hops,  
this family includes  
mulberry, Osage  
orange and hemp.



Hops, Japanese  
*Humulus japonicus*

## Capparidaceae (Caper family)

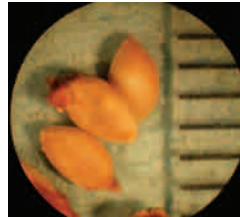
This small family of  
plants has only a few  
members that occur  
in Missouri such as  
spider flower.



Clammyweed,  
roughseed  
*Polanisia dodecandra*

## Caprifoliaceae (Honeysuckle family)

This family includes several species of  
honeysuckle, viburnum and elderberry.



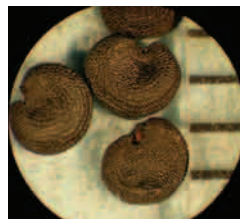
Buckbrush  
*Symphoricarpos*  
*orbiculatus*



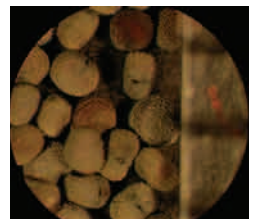
Feverwort  
*Triosteum perfoliatum*

## Caryophyllaceae (Pink family)

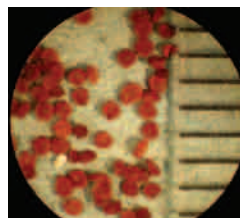
At least 14 species of "chickweed" and  
several species of sleepy catchfly make up  
the majority of this family in Missouri.



Bouncingbet  
*Saponaria officinalis*



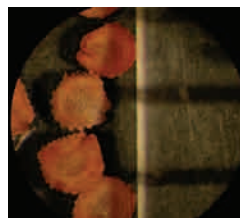
Catchfly, sleepy  
*Silene antirrhina*



Chickweed, common  
*Stellaria media*



Chickweed, mouseear  
*Cerastium vulgatum*



Chickweed, nodding  
*Cerastium nutans*



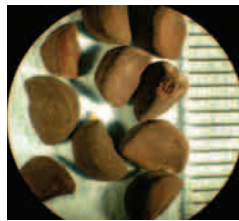
Chenopodiaceae  
(Goosefoot family)

Broadleaf plant families

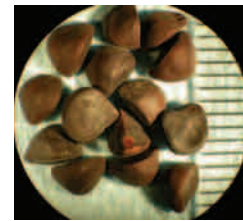
Dipsacaceae  
(Teasel family)

**Chenopodiaceae**  
**(Goosefoot family)**

At least 18 different *Chenopodium* genera members, also known as lambsquarters, are present in Missouri. *Kochia* is also another important member.



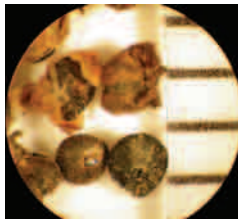
Morningglory, ivyleaf  
*Ipomoea hederacea*



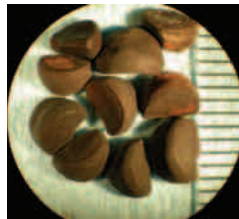
Morningglory, pitted  
*Ipomoea lacunosa*



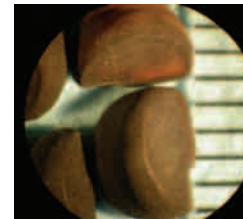
Kochia  
*Kochia scoparia*



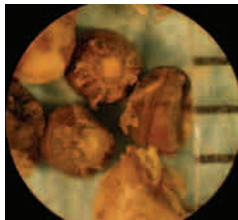
Lambsquarters, common  
*Chenopodium album*



Morningglory, tall; *Ipomoea purpurea*



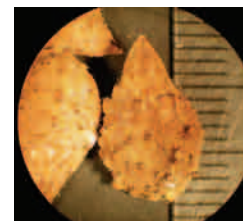
Povertyweed, Nuttall  
*Monolepis nuttalliana*



Thistle, Russian  
*Salsola iberica*

**Cucurbitaceae**  
**(Gourd family)**

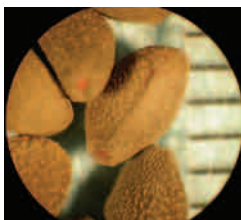
Cucurbits include cultivated plants, such as gourd, squash and cucumber.



Burcucumber  
*Sicyos angulatus*

**Convolvulaceae**  
**(Morningglory family)**

Most of the members of this family are vining plants, including several common species of morningglories, bindweeds and the parasitic group of plants, dodders.



Bindweed, field  
*Convolvulus arvensis*



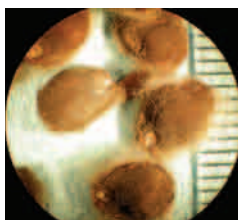
Bindweed, hedge  
*Calystegia sepium*

**Dipsacaceae**  
**(Teasel family)**

The only two members of this family of plants that are known to occur in Missouri are cutleaf and common teasel.



Dodder, field  
*Cuscuta campestris*



Morningglory, bigroot  
*Ipomoea pandurata*



Teasel, common  
*Dipsacus fullonum*



Teasel, cutleaf  
*Dipsacus laciniatus*

# Broadleaf plant families

Euphorbiaceae  
(Spurge family)

## Euphorbiaceae (Spurge family)

Most of the plants from this family present in Missouri are spurges, which include about 20 different species.



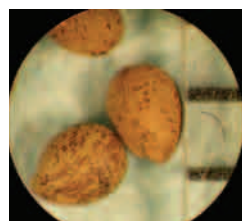
Copperleaf, hophornbeam; *Acalypha ostryifolia*



Copperleaf, Virginia; *Acalypha virginica*



Croton, tropic  
*Croton glandulosus* var.  
*septentrionalis*



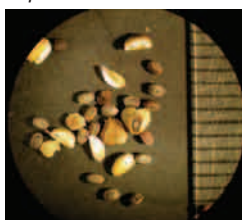
Croton, woolly  
*Croton capitatus*



Spurge, nodding; *Euphorbia nutans*



Spurge, prostrate  
*Euphorbia humistrata*



Spurge, toothed  
*Euphorbia dentata*



## Fabaceae (Pea family)

The legume family is one of the largest groups of broadleaf plants. Common members include clovers and various beans and peas.



Blue false indigo  
*Baptisia australis*



Partridgepea, Illinois  
*Desmanthus illinoensis*



Medic, black  
*Medicago lupulina*



Rattlebox  
*Crotalaria sagittalis*



Senna, wild  
*Cassia marilandica*



Sericea lespedeza  
*Lespedeza cuneata*



Sesbania, hemp  
*Sesbania exaltata*



Tick trefoil  
*Desmodium paniculatum*



Geraniaceae  
(Geranium family)

# Broadleaf plant families

Malvaceae  
(Mallow family)



Wildindigo, long-bracted  
*Baptisia leucophaea*



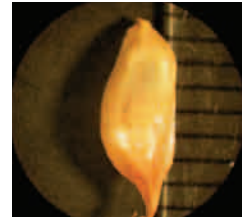
Wildindigo, white  
*Baptisia leucantha*

## Liliaceae (Lily family)

Besides being considered weedy plants, several members of the lily family are commonly cultivated. Such members include asparagus, yucca and many cultivars of daylilies.



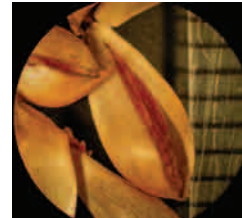
Catbriar  
*Smilax bona-nox*



Garlic, wild  
*Allium vineale*



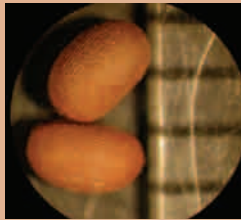
Greenbriar, bristly  
*Smilax hispida*



Onion, wild  
*Allium canadense*

## Geraniaceae (Geranium family)

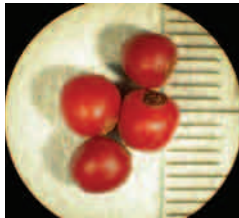
The majority of this family of plants present in Missouri are geraniums. There are at least five species known to occur in the state.



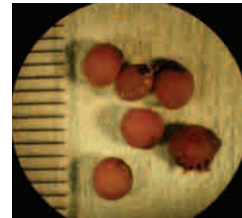
Carolina geranium  
*Geranium carolinianum*

## Lamiaceae (Mint family)

Common members of the mint family not shown in this guide are henbit and purple deadnettle, which are two of the most prevalent winter annuals in Missouri.



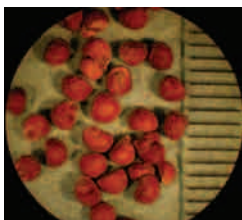
Smooth carrion flower  
*Smilax herbacea*



Solomon's seal  
*Polygonatum biflorum*

## Malvaceae (Mallow family)

Several species of the mallow family are among the most common broadleaf weeds in Missouri. These include velvetleaf and prickly sida. Cotton is also a member of this family.



Germander, American  
*Teucrium canadense*



Gianthysop, catnip  
*Agastache nepetoides*



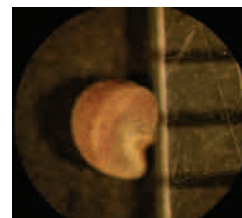
Healall  
*Prunella vulgaris*



Mint, perilla  
*Perilla frutescens*



Anoda, spurred  
*Anoda cristata*



Mallow, common  
*Malva neglecta*

# Broadleaf plant families

Malvaceae  
(Mallow family)  
....continued

## Malvaceae (Mallow family)

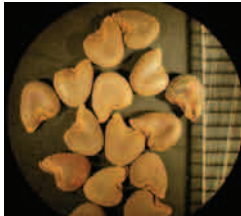
continued



Mallow, rose  
*Hibiscus lasiocarpus*



Sida, prickly  
*Sida spinosa*



Velvetleaf; *Abutilon theophrasti*



## Onagraceae (Evening primrose family)

Primrose is a common member of this family with approximately 14 different species present in Missouri.

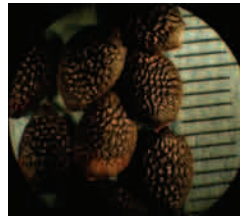


Eveningprimrose, common; *Oenothera biennis*



## Passifloraceae (Passionflower family)

Although about 18 genera of the passion flower family are known, only one genus is known to be present in Missouri.

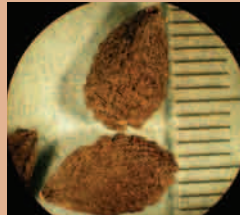


Passionflower, maypop; *Passiflora incarnata*



## Martyniaceae (Unicorn-plant family)

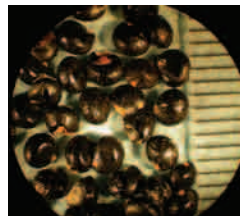
Devil's-claw, also known as unicorn plant, is the only known species of this family to be present in Missouri.



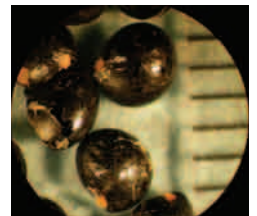
Devil's-claw  
*Proboscidea louisianica*

## Phytolaccaceae (Pokeweed family)

This relatively small plant family has only one genus occurring in Missouri, common pokeweed.



Pokeweed, common; *Phytolacca americana*



## Menispermaceae (Moonseed family)

Although there are about 75 genera of the moonseed family, Missouri has only three known genera.



Moonseed, redberry  
*Cocculus carolinus*

Phytolaccaceae  
(Pokeweed family)

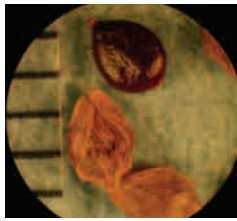
Plantaginaceae  
(Plantain family)

Broadleaf plant families

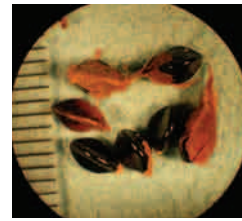
Ranunculaceae  
(Buttercup family)

**Plantaginaceae  
(Plantain family)**

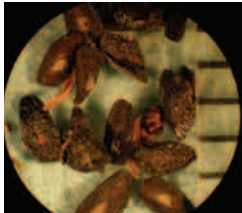
The group of plants known collectively as plantains has about 11 species in the state.



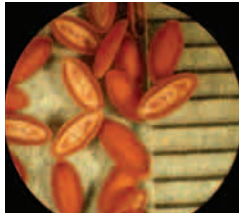
Ladysthumb  
*Polygonum persicaria*



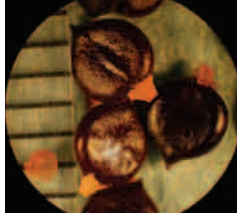
Smartweed, hedge  
*Polygonum scandens*



Plantain, blackseed  
*Plantago rugelii*



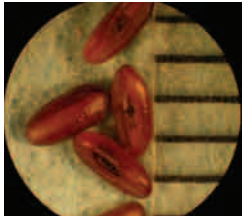
Plantain, bracted  
*Plantago aristata*



Smartweed, Pennsylvania  
*Polygonum pennsylvanicum*



Sorrel, red  
*Rumex acetosella*



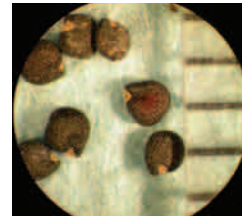
Plantain, buckhorn  
*Plantago lanceolata*



Plantain, hoary  
*Plantago media*

**Portulacaceae  
(Purslane family)**

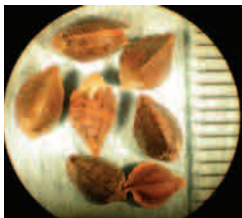
Of 20 genera known within this family, there are only three present in the state. Purslane is the most common among them.



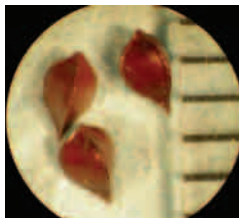
Purslane, common  
*Portulaca oleracea*

**Polygonaceae  
(Smartweed family)**

Many different species of plants in Missouri are known as smartweeds, some of which are among the state's most common weeds. Of about 30 genera of these plants worldwide, at least six are present in Missouri.



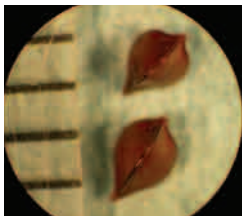
Buckwheat, wild  
*Polygonum convolvulus*



Dock, broadleaf  
*Rumex obtusifolius*

**Ranunculaceae  
(Buttercup family)**

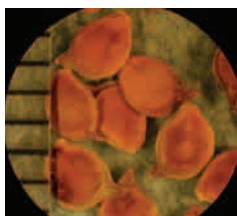
This rather large group of plants is best known for buttercups, of which there are nearly 20 species in Missouri. Clematis is another fairly common plant genus occurring in this family.



Dock, curly  
*Rumex crispus*



Knotweed, prostrate  
*Polygonum aviculare*



Buttercup, bulbous  
*Ranunculus bulbosus*



Buttercup, smallflower  
*Ranunculus abortivus*

# Broadleaf plant families

Ranunculaceae  
(Buttercup family)  
....continued

## Ranunculaceae (Buttercup family)

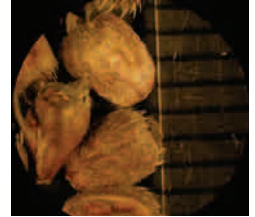
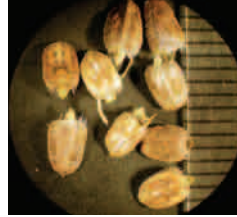
*continued*



Columbine  
*Aquilegia canadensis*

## Rubiaceae (Madder family)

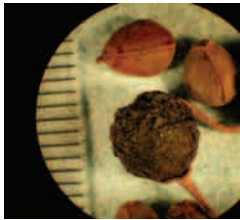
Although a large family of plants with about 600 genera, there are about eight genera present in Missouri. The genus, *Galium*, is the largest in this state with at least 11 species, including a common winter annual, catchweed bedstraw.



Poorjoe; *Diodia teres* (both photos)

## Rhamnaceae (Buckthorn family)

The buckthorn family has three genera found in the state; *Rhamnus* spp. or buckthorn is the more common with three species.



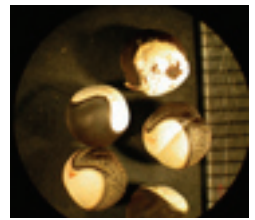
Buckthorn, Carolina  
*Rhamnus caroliniana*



Buckthorn, lance-leaved  
*Rhamnus lanceolata*

## Sapindaceae (Soapberry family)

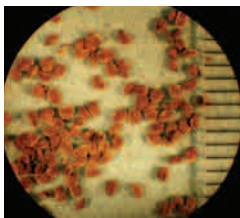
The soapberry family has only two genera present in the state and is not common, although there are about 140 members worldwide.



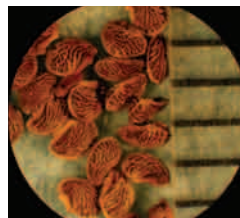
Balloonvine  
*Cardiospermum halicacabum*

## Rosaceae (Rose family)

Many of the members of this family are commonly grown as cultivated plants, including rose, apple, pear and strawberry. A notorious member, multiflora rose, is one of the state's noxious weeds.

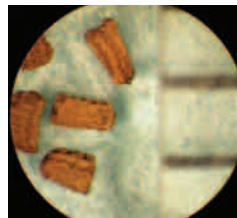


Cinquefoil, sulfur; *Potentilla recta*

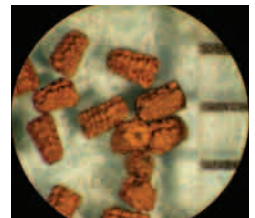


## Scrophulariaceae (Figwort family)

Of the nearly 280 genera, at least 25 are known to be in Missouri. The genera that contain mullein and speedwell are among the most common.



Mullein, common  
*Verbascum thapsus*



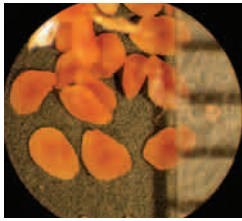
Mullein, moth  
*Verbascum blattaria*

Scrophulariaceae  
(Figwort family)

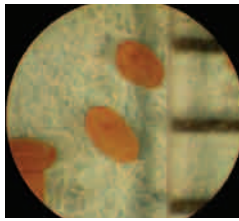
Scrophulariaceae  
(Figwort family)  
....continued

Broadleaf plant families

Vitaceae  
(Grape family)



Speedwell, corn  
*Veronica arvensis*



Speedwell, purslane  
*Veronica peregrina*

**Urticaceae**  
(Nettle family)

This relatively small family of plants has only five genera occurring in Missouri, but one of its members, *Laportea canadensis* or wood nettle, is a common nuisance plant because of its stinging hairs.

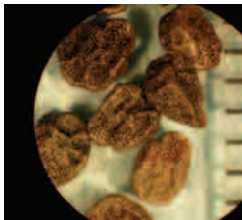


Pellitory; *Parietaria pensylvanica*



**Solanaceae**  
(Nightshade family)

Some of the state's most prevalent weed problems are caused by this family's members, such as various species of nightshade. Other members are commonly cultivated such as tomato, pepper, potato and eggplant.



Buffalobur  
*Solanum rostratum*



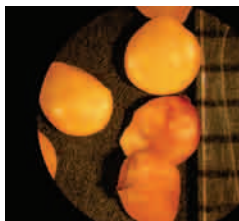
Groundcherry, clammy  
*Physalis heterophylla*

**Verbenaceae**  
(Vervain family)

Of about 90 known genera, only three occur in the state. Most prevalent are the vervains, with seven species, most commonly encountered throughout Missouri.



Groundcherry, smooth  
*Physalis subglabrata*



Horsenettle  
*Solanum carolinense*



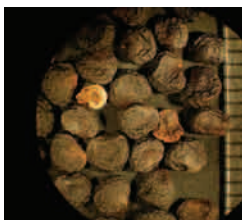
Vervain, blue  
*Verbena hastata*



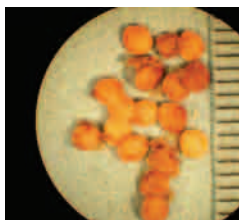
Vervain, hoary  
*Verbena stricta*

**Vitaceae**  
(Grape family)

Several species of the grape family are commercially valuable to the state's economy. Virginia creeper is one of the most common vining weeds encountered in undisturbed habitats.



Jimsonweed  
*Datura stramonium*



Nightshade, bittersweet  
*Solanum dulcamara*



Raccoon grape  
*Ampelopsis cordata*



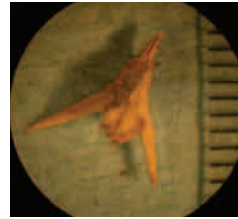
Virginia-creeper;  
*Parthenocissus quinquefolia*



Nightshade, eastern black  
*Solanum ptycanthum*

**Zygophyllaceae  
(Caltrop family)**

This relatively small plant family has about 30 members, but only two actually occur in Missouri. Of these two, puncturevine is the more common.



Puncturevine  
*Tribulus terrestris*

Broadleaf plant families

**Common name index- Broadleaf plant families**

- |                             |                             |                               |                              |
|-----------------------------|-----------------------------|-------------------------------|------------------------------|
| Amaranth, Palmer, 4         | Devil's-claw, 12            | Milkweed, eastern whorled, 5  | Salsify, western, 6          |
| Anoda, spurred, 11          | Dock, broadleaf, 13         | Milkweed, green, 5            | Senna, wild, 10              |
| Aster, white heath, 5       | Dock, curly, 13             | Milkweed, honeyvine, 5        | Sericea lespedeza, 10        |
| Balloonvine, 14             | Dock, prairie, 6            | Mint, perilla, 11             | Sesbania, hemp, 10           |
| Beggarticks, bearded, 5     | Dodder, field, 9            | Moonseed, redberry, 12        | Shepherd's-purse, 8          |
| Bindweed, field, 9          | Dogbane, hemp, 5            | Morningglory, bigroot, 9      | Sibara, 8                    |
| Bindweed, hedge, 9          | Eclipta, 6                  | Morningglory, ivyleaf, 9      | Sicklepod, 10                |
| Blue false indigo, 10       | Eveningprimrose, common, 12 | Morningglory, pitted, 9       | Sida, prickly, 12            |
| Boneset, false, 5           | Falseflax, smallseed, 7     | Morningglory, tall, 9         | Smartweed, hedge, 13         |
| Boneset, late, 5            | Feverwort, 8                | Mullein, common, 14           | Smartweed, Pennsylvania, 13  |
| Bouncingbet, 8              | Flixweed, 7                 | Mullein, moth, 14             | Smooth carrion flower, 11    |
| Browneyed-susan, 5          | Galinsoga, hairy, 6         | Mustard, hedge, 7             | Snakeroot, white, 6          |
| Buckbrush, 8                | Garlic, wild, 11            | Mustard, wild, 7              | Solomon's seal, 11           |
| Buckthorn, Carolina, 14     | Germander, American, 11     | Nightshade, bittersweet, 15   | Sorrel, red, 13              |
| Buckthorn, lance-leaved, 14 | Gianthyssop, catnip, 11     | Nightshade, eastern black, 15 | Sowthistle, annual, 6        |
| Buckwheat, wild, 13         | Goldenrod, Canada, 6        | Onion, wild, 11               | Sowthistle, spiny, 6         |
| Buffalobur, 15              | Goldenrod, tall, 6          | Partridgepea, 10              | Spanishneedles, 7            |
| Bundleflower, Illinois, 10  | Greenbriar, bristly, 11     | Passionflower, maypop, 12     | Speedwell, corn, 15          |
| Burcucumber, 9              | Gromwell, corn, 7           | Pellitory, 15                 | Speedwell, purslane, 15      |
| Burdock, common, 5          | groundcherry, clammy, 15    | Pennycress, field, 7          | Spurge, nodding, 10          |
| Burnweed, American, 5       | groundcherry, smooth, 15    | Pepperweed, Virginia, 7       | Spurge, prostrate, 10        |
| Buttercup, bulbous, 13      | Groundsel, common, 6        | Pigweed, redroot, 4           | Spurge, toothed, 10          |
| Buttercup, smallflower, 13  | Healall, 11                 | Pigweed, smooth, 4            | Sumac, smooth, 4             |
| Carolina geranium, 11       | Hedgeparsley, Japanese, 4   | Pigweed, tumble, 4            | Sunflower, common, 7         |
| Carpetweed, 4               | Hops, Japanese, 8           | Plantain, blackseed, 13       | Tansymustard, green, 8       |
| Carrot, wild, 4             | Horseneettle, 15            | Plantain, bracted, 13         | Teasel, common, 9            |
| Catbriar, 11                | Horseweed, 6                | Plantain, buckhorn, 13        | Teasel, cutleaf, 9           |
| Catchfly, sleepy, 8         | Ironweed, tall, 6           | Plantain, hoary, 13           | Thistle, bull, 7             |
| Chervil, wild, 4            | Ironweed, western, 6        | Poison-hemlock, 4             | Thistle, Canada, 7           |
| Chickweed, common, 8        | Jack-in-the-pulpit, 5       | Pokeweed, common, 12          | Thistle, field, 7            |
| Chickweed, mouseear, 8      | Jimsonweed, 15              | Poorjoe, 14                   | Thistle, musk, 7             |
| Chickweed, nodding, 8       | Knotweed, prostrate, 13     | Povertyweed, nuttall, 9       | Thistle, Russian, 9          |
| Chicory, 5                  | Kochia, 9                   | Puncturevine, 16              | Thistle, Scotch, 7           |
| Cinquefoil, sulfur, 14      | Laceflower, 4               | Purslane, common, 13          | Thistle, tall, 7             |
| Clammyweed, roughseed, 8    | Ladysthumb, 13              | Raccoon grape, 16             | Tick trefoil, 10             |
| Cocklebur, common, 6        | Lambsquarters, common, 9    | Ragweed, common, 6            | Trumpetcreeper, 7            |
| Columbine, 14               | Lettuce, prickly, 6         | Ragweed, giant, 6             | Velvetleaf, 12               |
| Copperleaf, hophornbeam, 10 | Lettuce, tall, 6            | Ragweed, lanceleaf, 6         | Vervain, blue, 15            |
| Copperleaf, Virginia, 10    | Mallow, common, 11          | Rattlebox, 10                 | Vervain, hoary, 15           |
| Croton, tropic, 10          | Mallow, rose, 12            | Rocket, yellow, 8             | Virginia-creeper, 16         |
| Croton, woolly, 10          | Medic, black, 10            | Rosinweed, cup, 6             | Waterhemp, common, 4         |
| Dandelion, 6                | Milkweed, common, 5         | Rosinweed, wholeleaf, 6       | Wildindigo, long-bracted, 11 |
|                             |                             |                               | Wildindigo, white, 11        |



Cyperaceae  
(Sedge family)

# Grass and grasslike plant families

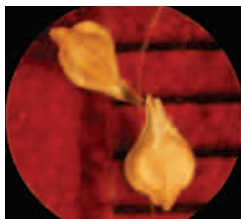
Poaceae  
(Grass family)

## Cyperaceae (Sedge family)

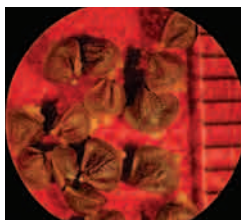
Missouri is home to more than 200 species of sedges. Agronomically, yellow nutsedge, *Cyperus esculentus*, is considered to be the most problematic in prevalence of this family of plants.



Nutsedge, yellow  
*Cyperus esculentus*



Sedge, fox  
*Carex vulpinoidea*



Sedge, Short's  
*Carex shortiana*

## Juncaceae (Rush family)

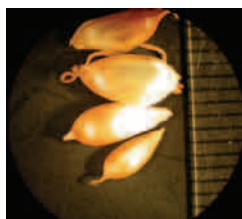
More than 20 species of rushes occur in Missouri. Rushes are not true grasses or sedges. Determining individual species of rushes by plant characteristics is nearly impossible.



Rush, grassleaf  
*Juncus marginatus*

## Liliaceae (Lily family)

Several members of this family are cultivated as ornamentals, including daffodil and day lily. About 30 species of this family are present in the state.



Garlic, wild  
*Allium vineale*



Onion, wild  
*Allium canadense*

## Poaceae (Grass family)

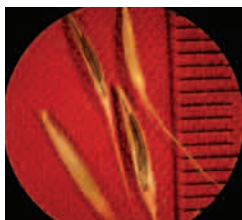
About 270 species of true grasses are found in the state. Many species are economically important, including corn, wheat, sorghum, rye, fescue, oats, rice, barley and various millets.



Barnyardgrass  
*Echinochloa crus-galli*



Bluegrass, annual  
*Poa annua*



Brome, downy  
*Bromus tectorum*



Brome, Japanese  
*Bromus japonicus*



Broomsedge  
*Andropogon virginicus*

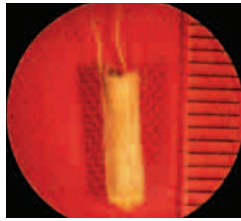


Canarygrass, reed  
*Phalaris arundinacea*

Poaceae  
(Grass family)  
...continued

# Grass and grasslike plant families

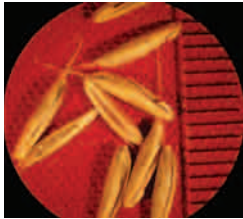
**Poaceae  
(Grass family)**  
  
*Continued*



Goatgrass, jointed  
*Aegilops cylindrica*



Goosegrass  
*Eleusine indica*



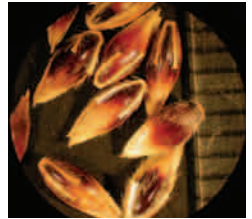
Cheat  
*Bromus secalinus*



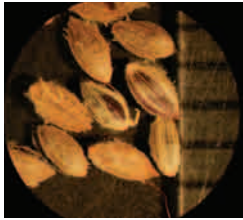
Crabgrass, large  
*Digitaria sanguinalis*



Indiagrass, yellow  
*Sorghastrum nutans*



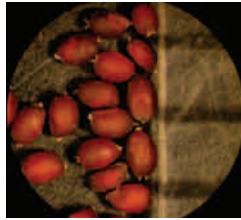
Johnsongrass  
*Sorghum halepense*



Crabgrass, smooth  
*Digitaria ischaemum*



Cupgrass, woolly  
*Eriochloa villosa*



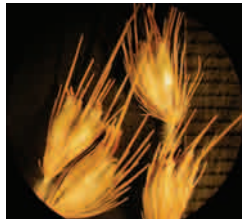
Lovegrass, purple  
*Eragrostis spectabilis*



Mannagrass, fowl  
*Glyceria striata*



Dropseed  
*Sporobulus asper*



Fountaingrass, crimson  
*Pennisetum ruppelii*



Millet, foxtail  
*Setaria italica*



Oat, wild  
*Avena fatua*



Foxtail, bristly  
*Setaria verticillata*



Foxtail, giant  
*Setaria faberi*



Panicum, fall  
*Panicum dichotomiflorum*



Paspalum, field  
*Paspalum laeve*



Foxtail, green  
*Setaria viridis*



Foxtail, yellow  
*Setaria glauca*



Paspalum, hairyseed  
*Paspalum pubiflorum*



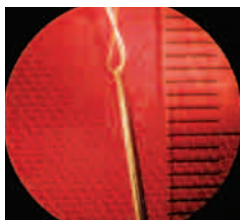
Paspalum, thin  
*Paspalum setaceum*



Purpletop  
*Tridens flavus*



Quackgrass  
*Elytrigia repens*



Threeawn, prairie  
*Aristida oligantha*



Timothy  
*Phleum pratense*



Sandbur, longspine  
*Cenchrus longispinus*



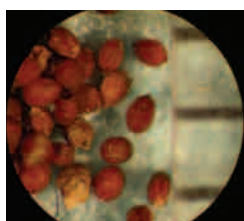
Shattercane  
*Sorghum bicolor*



Tridens, longspike  
*Tridens strictus*



Windmillgrass, tumble  
*Chloris verticillata*



Stinkgrass  
*Eragrostis ciliaris*



Switchgrass  
*Panicum virgatum*



Witchgrass  
*Panicum capillare*

### Common name index - Grass and grasslike plant families

Barnyardgrass, 17  
Bluegrass, annual, 17  
Brome, downy, 17  
Brome, Japanese, 17  
Broomsedge, 17  
Canarygrass, reed, 17  
Cheat, 18  
Crabgrass, large, 18  
Crabgrass, smooth, 18  
Cupgrass, woolly, 18  
Dropseed, 18  
Fountaingrass, crimson, 18

Foxtail, bristly, 18  
Foxtail, giant, 18  
Foxtail, green, 18  
Foxtail, yellow, 18  
Garlic, wild, 17  
Goatgrass, jointed, 18  
Goosegrass, 18  
Indiangrass, yellow, 18  
Johnsongrass, 18  
Lovegrass, purple, 18  
Mannagrass, fowl, 18  
Millet, foxtail, 18

Nutsedge, yellow, 17  
Oat, wild, 18  
Onion, wild, 17  
Panicum, fall, 18  
Paspalum, field, 18  
Paspalum, hairyseed, 18  
Paspalum, thin, 18  
Purpletop, 19  
Quackgrass, 19  
Rush, grassleaf, 17  
Sandbur, longspine, 19  
Sedge, fox, 17

Sedge, Short's, 17  
Shattercane, 19  
Stinkgrass, 19  
Switchgrass, 19  
Threeawn, prairie, 19  
Timothy, 19  
Tridens, longspike, 19  
Windmillgrass, tumble, 19  
Witchgrass, 19



■ Issued in furtherance of Cooperative Extension Work Acts of May 8 and June 30, 1914, in cooperation with the United States Department of Agriculture. Thomas A. Henderson, Interim Director, Cooperative Extension, University of Missouri and Lincoln University, Columbia, MO 65211. ■ University of Missouri Extension does not discriminate on the basis of race, color, national origin, sex, sexual orientation, religion, age, disability or status as a Vietnam era veteran in employment or programs. ■ If you have special needs as addressed by the Americans with Disabilities Act and need this publication in an alternative format, write ADA Officer, Extension and Agricultural Information, 1-98 Agriculture Building, Columbia, MO 65211, or call (573) 882-7216. Reasonable efforts will be made to accommodate your special needs.