

UNIVERSITY OF MISSOURI EXTENSION

Wright County 2023

Annual Report



608 East State Street
Mountain Grove, MO 65711
417-349-4134

**SERVE
MISSOURI.**

**DELIVER
MIZZOU.**



Extension
University of Missouri

an equal opportunity/ADA institution

Office of Extension and Engagement

University of Missouri

OFFICE OF THE VICE CHANCELLOR
FOR EXTENSION AND ENGAGEMENT

108 Whitten Hall
Columbia, MO 65211

PHONE 573-882-2394

EMAIL: cchiggins@missouri.edu

December 2023

Dear county commissioners and friends of MU Extension and Engagement,

Thank you for your important partnership with the University of Missouri Extension this past year.

I want to highlight three areas that address needs you helped us identify.

You may recall that the FY 23 state budget provided a one-time \$5 million infusion to MU Extension for growth. Of that, we allocated about \$3 million for field faculty in the areas of agriculture, 4-H, health/human development and business and community development.

Through a dedicated hiring effort, and thanks to that allocation, we have hired 168 new employees since November 2022. That includes 72 academic/faculty members, most of whom are field specialists in a priority area noted above, and 96 staff members (e.g., office administrators, youth and food and nutrition associates, etc.).

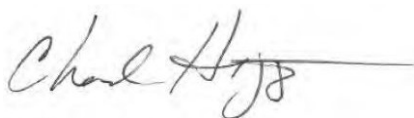
We also returned more faculty to local program delivery that best serves your county's needs, while preserving the partnership and relationship building work you value. Our extension and engagement specialists focus full-time on that work as they serve their assigned multi-county groups. Currently, 19 have been hired, with two more in the pipeline.

Finally, we are prioritizing our work with county extension councils. In the new role of partnership and council development director, Lorin Fahrmeier focuses on strengthening council representation and governance. This role will build stronger links with regional, educational and campus leadership to better identify and address local priorities.

At the UM System level, our engagement work across four universities and with leaders across the state makes a difference in areas of greatest need: broadband, workforce development, health access, food security and healthy futures for our youth.

Your county annual report shows what we are accomplishing together as we Serve Missouri and Deliver Mizzou. We look forward to strengthening that partnership with county commissioners and community stakeholders in the coming year.

Sincerely,



Chad Higgins, PhD
Interim Vice Chancellor, MU Extension and Engagement
Chief Engagement Officer, UM System

Who we are

Faculty and staff



- Kyle Wake, 4-H Specialist
- Ashley Garner, Nutrition Educator
- Chloe Collins, Dairy Specialist
- Janice Weddle, Extension and Engagement Specialist
- Christi Crisp, Nutrition Educator
- Courtney Smith, Office Manager

Council members

- Lee Richardson, Chairman
- Gail Newton, Vice-chairman
- Courtney Emery, Secretary
- Connie Mitchell, Treasurer
- Edie Richardson
- Randy Pamperien
- Susan Brooks
- Janice Duke
- David Ellis
- Mary Holder
- Jennifer Johnson
- Rhonda McIntosh
- Tim Schook
- Gabrielle Yurgil

County commissioners



Zach Williams, Presiding Commissioner
Randy Pamperien, Eastern District Commissioner
Tommy Kingery, Western District Commissioner

Budget and more

Appropriations budget

Income

County Appropriations	54,480
City Appropriations	6,100
Total Income	60,580

Expenses

Salaries/Benefits	34,879
Mileage	2,736
Telephones	4,900
Supplies/Services	6,500
Utilities	0
Insurance	1,470
Capital Repairs	2,500
Total Expenses	52,985

MU Extension is a unique funding partnership.

Extension funding is a three-way partnership of federal, state and county government. Federal and state money, through the University of Missouri system, pay professional staff salaries, training costs, computers and communication equipment. County funds support the local office, secretarial and youth assistant salaries, staff mileage and council expenses.

The *Wright* County Extension Council, faculty and staff would like to express our appreciation to the *Wright* County Commissioners and the City of Mountain Grove for their continued support of extension programs.

Local Support

Did you know you can donate directly to *Wright* County Extension with a gift to be used immediately or as an endowment contribution for long term efforts. Monies put into the endowment are left forever to earn interest with the county office benefiting each year. You can also direct your donation to a specific program such as 4-H or Master Gardeners.

UM System County Impacts

2024 UM Systemwide Impact Data Sheets

Wright County



University of Missouri System
COLUMBIA | KANSAS CITY | ROLLA | ST. LOUIS

UM System Footprint in the county in 2023



FY23 county students

23 students

- 17 Undergraduates
- 6 Graduate and professional students
- 15 Full-time students
- 8 Part-time students



County employees and retirees

3 people employed by UM

- 3 Campuses



County alumni

Selected school alumni

- 4 Medicine
- 8 Nursing
- 8 Health Professions
- 5 Dentistry
- 7 Pharmacy
- 8 Veterinary Medicine
- 24 Agriculture
- 28 Engineering
- 5 Law

Alumni teaching K-12

- 6 teachers
- 2.2% of all district teachers
- 3 principals and administrators
- 16.7% of all district principals and administrators



County breakdown

MU

- 14 students
- 96 alumni
- 2 employees

UMKC

- 4 students
- 23 alumni
- 0 employees

Missouri S&T

- 3 students
- 26 alumni
- 1 employee

UMSL

- 2 students
- 5 alumni
- 0 employees



Construction projects

- \$9,600 remitted to 1 county vendor, for 1 project



County properties and offices

MU Extension in: Wright County



County population: 18,244



County services provided

Health care (FY23)

- 128 in-state patients seen at MU Health Care, with \$86,385 of uncompensated care
- 2 in-state patients seen at UMKC School of Dentistry with a statewide average of \$43.61 per patient in uncompensated care
- MU Health Care's Missouri Telehealth Network recorded 105 visits to 43 patients having ZIP codes associated with the county

Extension (2022)

- 2,550 Total educational contacts from MU Extension to residents of the county, including:
- 156 contacts related to productive farming, better gardening, and managing natural resources
- 2,394 contacts related to healthy eating and aging, strengthening families, personal finance, or youth development

Wright County



University of Missouri System
COLUMBIA | KANSAS CITY | ROLLA | ST. LOUIS

UM system Statewide Footprint

Economic and Community Development Highlights

- In 2022, Business Development Specialists worked with small businesses and entrepreneurs statewide to create or retain 81,645 jobs.



For every dollar invested from 2019 to 2021, the MU Extension Business Development Program has returned \$133 in economic impact for its clients by increasing sales more than \$1.6 billion. For a total impact of \$3.1 billion, the program has generated more than 37,000 jobs and attracted nearly \$451 million in capital investments and \$1.5 billion in government contracts.

- Between FY17 and FY22, UM system brought Missouri more than \$1.46 billion in federal and private research funds, funded primarily from outside the state, but spent within the state.



In FY23, UM System was issued 33 patents and filed 61 new U.S. patent applications.

- In FY23, the UM System awarded 805 design and construction project contracts throughout Missouri, for a total investment of \$279.2 million in the state.



In FY23, to improve access to medical and health related services, MU Health Care's Missouri Telehealth Network's Show-Me ECHO program provided 18,381 hrs of case-based instruction to 2,938 learners located in 112 of 114 Missouri counties and the city of St. Louis.

Education and Training Provided



41,992 police, fire fighters, and medical professionals attending continuing education (2022)



Agriculture and natural resource programs served 174,692 farmers and related businesses (2022)



311,749 youth and stakeholder educational contacts in 4-H clubs, schools, camps and other programs (2022)

Education Highlights

FV23 Financial Aid Awards

In FY23, 67.3% of the UM System's 80,702 students received financial aid totaling \$973.7 million

MU		UMKC	
27,256	\$536.0M	11,859	\$217.3M
students receiving financial aid	financial aid awarded	students receiving financial aid	financial aid awarded

Missouri S&T		UMSL	
6,748	\$117.7M	8,489	\$102.8M
students receiving financial aid	financial aid awarded	students receiving financial aid	financial aid awarded



UM System's MOREnet (Missouri Research and Education Network) provides internet connectivity, access, support and training to 58 higher education institutions (230,000 students), 485 K-12 school districts (832,000 students) and 132 public libraries (serving nearly 3 million Missourians) in 2022.

- UM System awarded 50.5% of the 32,098 Bachelor's or higher degrees awarded by Missouri four-year public institutions in 2022-23.
- UM System awarded 36.6% of the 1,935 research doctorates and 26.9% of the 3,593 professional doctorates awarded by Missouri public and not-for-profit private institutions in 2022-23.
- In FY23, UM System's \$37.9 million in National Science Foundation (NSF) grants represented 88.3% of all NSF grants made to Missouri public colleges and universities.
- In 2023, over 10,900 Missourians accessed mobroadband.org, part of the UM system Broadband Initiative which helped the statewide build-out of high-speed internet infrastructure. MU Extension also supported residents in making individual challenges to the FCC that resulted in \$810,000 in additional funding for the state of Missouri.

Supporting the University of Missouri is an investment in the future of Missouri.

The university advances Missouri citizens and communities through its mission of teaching, research, public service, and economic development across our four campuses and University of Missouri Extension.

Prepared in December 2023, based on the best available and most recent data. Data Sources include: Missouri Office of Administration • UM IR • MU Institute for Public Policy • Center for Applied Research and Engagement Systems (CARES) • MU • UMKC • Missouri S&T • UMSL • UM System • UM Health Care • MU Extension • US Census Bureau • US Dept. of Health and Human Services • National Science Foundation



Missouri Grand Challenges: Local Solutions



WRIGHT COUNTY

Knowing Missouri's Needs

MU Extension asked Missourians to share the greatest challenges they and their communities face.

We heard that feedback and made big changes in the way we work with council and local partners to improve lives. Locally, a network of county engagement and subject matter specialists now share MU's knowledge, research and engagement, targeting programs, information and assistance in:

- agriculture and environment
- youth and family
- business and community
- health and safety

For each grand challenge, MU Extension and Engagement targets a specific gain by 2023:



Economic opportunity

Increase MU Extension and Engagement's economic impact to the State of Missouri from \$1 billion to \$1.5 billion overall, and from \$88 billion to \$100 billion in agriculture, the top economic sector



Educational access and excellence

Increase participation in postsecondary education from 66% to 70%



Health and well-being

Improve Missouri's health ranking from 40th to 35th in the nation

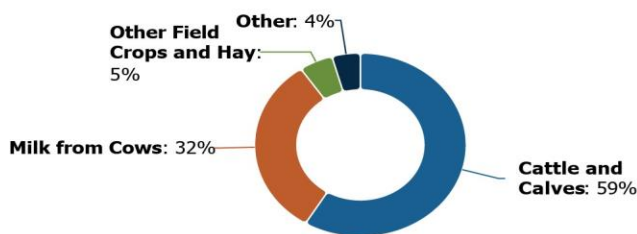
Knowing Local Challenges



CHALLENGE 1: Economic Opportunity: Agricultural Economics

Leading Agricultural Products

Total Commodity Sales: \$44,776,000



Data Source: US Department of Agriculture, National Agricultural Statistics Service, [Census of Agriculture](#). 2017.

Net Farm Income

Net farm income (total sales, government payments, and other farm-related income minus total farm expenses) reflects the strength of the local agricultural community and can be an important measure for lenders and policy makers. The report area had a combined net farm income of \$5,600,000 in 2017, an average of \$5,022 per farm. This is below the statewide average farm income of \$29,485.

Report Area	Total Farms	Average Farm Income
Wright	1,115	\$5,022
Missouri	95,320	\$29,485

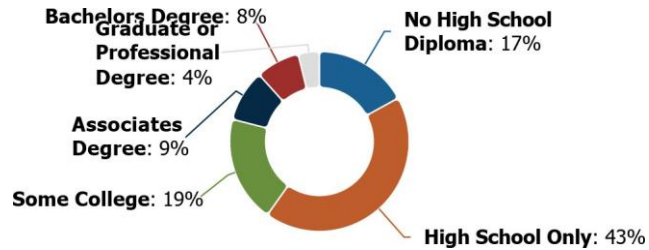
Data Source: US Department of Agriculture, National Agricultural Statistics Service, [Census of Agriculture](#). 2017.

£. CHALLENGE 2: Educational Access and Excellence: *Educational Attainment*

Adult Educational Attainment

Educational attainment shows the distribution of the highest level of education achieved in the report area, and helps schools and businesses understand the needs of adults, whether it be workforce training or the ability to develop science, technology, engineering, and mathematics opportunities. Educational attainment is calculated for persons over 25 and is an estimated average for the period from 2017 to 2021.

In the report area, 19.1% of adults have at least some college education and 17.2% of adults have an associate's level degree or higher. However, 42.8% stopped their formal educational attainment after completing high school, and 17.0% of adults did not complete high school.



No High School Diploma

17.03%

Missouri 9.02%

Wright

Data Source: US Census Bureau, [American Community Survey](#). 2017-21.

Data Source: US Census Bureau, [American Community Survey](#). 2017-21.

CHALLENGE 3: Healthy Futures: *Healthy Aging*

Fall Injuries

Falls are the leading cause of injury-related fatality and hospitalization among older adults in the United States. Between 2019 and 2021, adults over age 65 in the report area had 480 hospital or emergency room admissions for fall and jump-related injuries. The rate of these injuries was 4,365 per 100,000 population, which is lower than the state rate of 5,396. Falls hospitalizations have improved since the 2013-15 time period when the rate was 4,532.

Rate per 100,000, 2019-2021

4,365

Missouri 5,396 ↘

Wright



Data Source: US Department of Health & Human Services, [Missouri Department of Health & Senior Services](#). 2019-2021.

Primary Care Providers

Older adults make up a historically large percentage of the U.S. population, and meeting the healthcare needs of an aging population can be challenging. In the report area, there are approximately 3 primary care physicians (MDs and DOs) to serve the area's 3,630 residents over the age of 65. The patient provider ratio in the report area is 1,210:1, which means there is 1 provider for every 1,210 older adults. The ratio of adults to providers in the report area is higher than the state average of 242: 1, which means there are fewer providers per person in this area.

Ratio (Population to Providers)

1,210:1

Missouri 242:1

Wright

Data Source: US Department of Health & Human Services, Health Resources and Services Administration, [HRSA - Area Health Resource File](#). December 2023.

CHALLENGE 4: Agriculture: *Jobs Derived from Agriculture*

Missouri has a diverse agriculture industry, strong in crops and livestock, as well as food and forestry processing industries. These industries remain a significant part of Missouri's economy, supporting more than 1 in every 10 jobs, on average. In 2021, agriculture, forestry, and related industries in Missouri were estimated to contribute: 456,618 jobs, \$93.7 billion in output and \$31.8 billion in household income. [Learn more about Missouri Agriculture's Economic Impact.](#)

Percent of Jobs Derived from Agriculture

21.60

Wright

Missouri

23.55

Data Source: Missouri Department of Agriculture, [Missouri Agricultural and Small Business Development Authority](#), 2021.



MU EXTENSION **Serves MISSOURI and Delivers MIZZOU** through credible statewide programs

Missouri 4-H for ages 8 – 18



Community clubs are organized by volunteer club leaders and teams of recognized volunteers. Members attend club meetings, elect officers, enroll in projects and plan learning and community service activities. Some clubs opt to be single-project clubs, where all members focus on the same project.



4-H In-school clubs meet during the school day. Members participate in projects that supplement their existing lessons. Clubs may meet for short periods or span the full 4-H program year. Members can elect officers and plan learning activities with options of public speaking, community service and links to career readiness.



Missouri 4-H Agriculture and STEM programs

employ hands-on activities that foster problem-solving, creativity, critical thinking and exploration in engineering and technology. Agriculture programming emphasizes biology, environmental science, agri-science, veterinary science and engaging activities such as animal care and agronomy. STEM programs delve into computer science, robotics, aerospace, physics, chemistry and veterinary science.



Legend



Agricultural Growth & Stewardship



Economic Opportunity



Educational Access & Excellence



Health & Well-Being

Wright County

Missouri 4-H

Local Impact

Wright County is a large livestock community that continues to grow and take pride in their production. 4-H members in the county consistently show at the local and state level. They have now started a 4-H Livestock Judging team. The leadership from the 4-H members and their participation in community events is second to none.

4-H Builds Leadership and Communication Skills

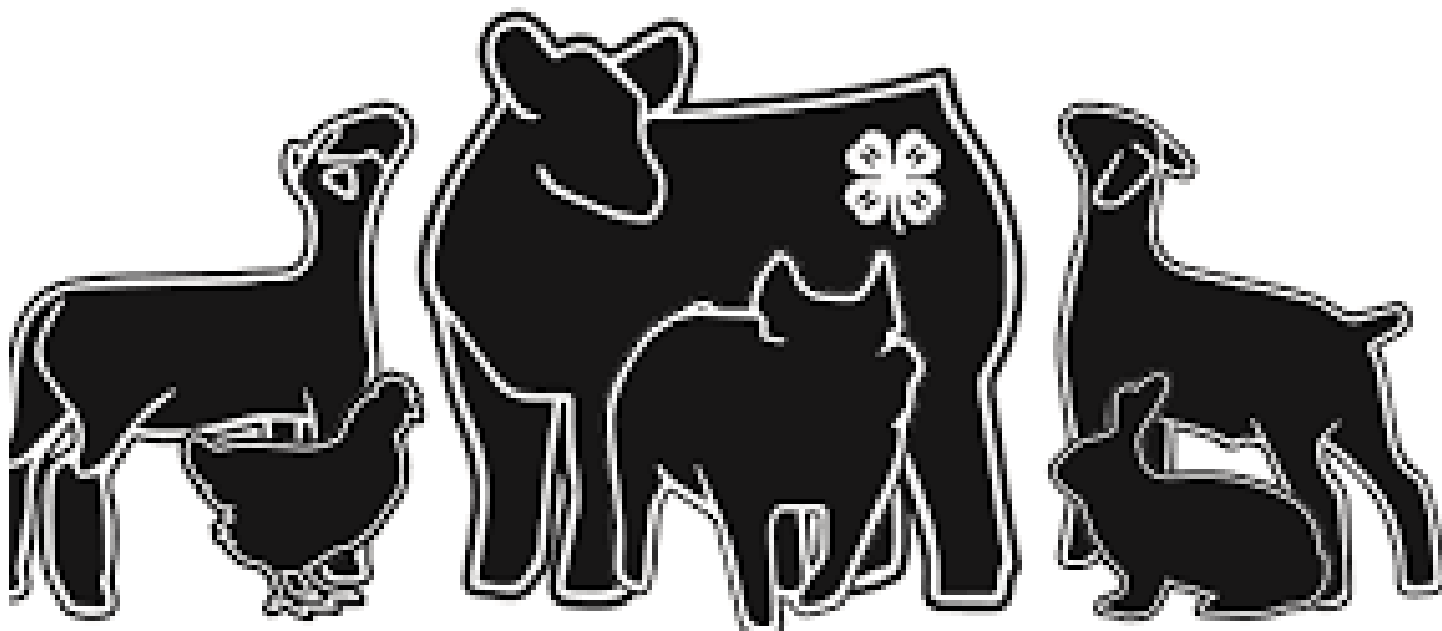
95% help others reach their goals.

86% comfortable speaking in a group.

99% said they show respect for other's ideas.

85% Can work with someone who made them upset.

95% Look for ways to involve all members of a group.



Wright County

Missouri 4-H

Local Profiles and Stories



The Mountain Grove School District has one of the largest Community Clubs in the County with an after-school club. They participate in 4-H competitions to help supplement their FFA curriculum and competitions.

4-H members participated in the Missouri State Fair. The County has roots in the livestock industry and many members showed their stock at the fair. This number continues to grow each year.

Missouri 4-H Inspires Kids to Do

98% said they are willing to work hard on something difficult.

91% set personal goals.

97% said they try to learn from their mistakes.

98% said they treat others the way they want to be treated.





MU EXTENSION **Serves MISSOURI and Delivers MIZZOU**

through credible statewide programs

Agriculture and Environment

Missouri Grazing Schools

This program teaches management-intensive grazing (MiG), which subdivides large fields into smaller paddocks then rotates livestock across paddocks. The program is delivered in 2- and 3-day schools that are held during the growing season (April to October) throughout Missouri, including at MU outlying centers. School instructors in MU Extension are regional specialists in Agronomy, Livestock, and Ag Business. They pair up with colleagues in NRCS, who teach fencing and watering systems as well as design of grazing systems. In 2018, impact of the grazing school program was \$125 million annual to the state economy.

- West Plains - April 26 – 28 (23 Attendees)
- West Plains – October (25 Attendees)



Legend



Agricultural Growth
& Stewardship



Economic
Opportunity



Educational
Access &
Excellence



Health
& Well-Being



MU EXTENSION **Serves MISSOURI and Delivers MIZZOU**
 through credible statewide programs
Agriculture and Environment

Spring Forage Conference

The 39th Annual conference is a collaboration between University of Missouri Extension regional ag specialists, Natural Resource Conservation Service employees, and Soil & Water Districts. This conference brought in nationally recognized speakers to create a high-quality conference. This conference had approximately 450 producers and industry stakeholders attend.



Legend



Agricultural Growth & Stewardship



Economic Opportunity



Educational Access & Excellence



Health & Well-Being



MU EXTENSION **Serves MISSOURI and Delivers MIZZOU**

through credible statewide programs

Agriculture and Environment

Drought

In 2023, drought was once again a major topic in agronomic programming, marking two years in a row where drought impacted the region. In 2023, drought workshops were held in Howell, Ozark, Texas, and Reynolds Counties, over 80 farmers attended these workshops. Howell County Extension Center conducted over 150 nitrate spot tests for various forage crops.



Soil Testing

Soil testing assists landowners with understanding the nutrient needs of their soils and helps producers determine the best course of action for fertilizing pasture and crop ground. Soil testing also enables producers to determine the best investment for profitability. The following are the number of farm soil tests conducted in the multi-county area: Howell - 530; Ozark – 123; Douglas - 106; Texas - 334; Wright – 154; Webster - 267.



Legend



Agricultural Growth
& Stewardship



Economic
Opportunity



Educational
Access &
Excellence



Health
& Well-Being



MU EXTENSION **Serves MISSOURI and Delivers MIZZOU**

through credible statewide programs

Agriculture and Environment

Private Pesticide Applicator Training

This program educates farmers about the safe and proper use of agricultural pesticides. To purchase and apply restricted-use pesticides, producers in Missouri must attend a training session, view a training video, or attend a Zoom session. A total of 163 private applicators received training in 2023 by either face-to-face meetings or two Zoom trainings.



Farm Visits

Consultations with individuals and small groups are a significant method of knowledge transfer for MU Extension. These contacts include phone conversations, office walk-ins, emails, and on-site farm visits. Consultations typically have made up a large portion of my work and have involved a wide range of topics. Fifty-five farm visits were conducted in the multi-county area.



Legend



Agricultural Growth
& Stewardship



Economic
Opportunity



Educational
Access &
Excellence



Health
& Well-Being



MU EXTENSION **Serves MISSOURI and Delivers MIZZOU**

through credible statewide programs

Agriculture and Environment

Show Me Quality Assurance Trainings

The Show Me Quality Assurance (SMQA) program is a youth-focused training emphasizing good livestock management practices in the handling and use of animal health products. This program encourages youth involved in livestock projects to take an active role in the health of their livestock. By completing this program, youth demonstrate their commitment to animal production and producing safe and wholesome food. Completion of this program serves to benefit both the livestock and food industries, by reducing the risk of management-based incidents that could destroy consumer confidence in the food supply. Livestock Specialist, Elizabeth Picking, teaches this training to 4Hers through hands-on activities and group learning.

Missouri AgrAbility Project

AgrAbility helps farmers with disabilities and their families succeed. The program links MU and Lincoln University extension services with a nonprofit disability organization to provide practical education and on-the-farm assistance that promotes agricultural and rural independence.

Missouri AgrAbility can...

- help determine if you're eligible for agency services
- perform a customized, on-site assessment of your farm or ranch
- recommend effective and safe solutions to help you overcome limitations
- provide educational resources to support your goals
- connect you with a peer support network

Elizabeth Picking is part of the Missouri AgrAbility Project team and discusses the program with perspective clients, completes on-farm assessments, and helps connect livestock producers to resources.



Legend



**Agricultural Growth
& Stewardship**



**Economic
Opportunity**



**Educational
Access &
Excellence**



**Health
& Well-Being**



MU EXTENSION **Serves MISSOURI and Delivers MIZZOU**

through credible statewide programs

Agriculture and Environment

Show Me Select Heifer Program

This program gives cattle producers an opportunity to market high quality replacement heifers through 12 sales a year. This also offers producers a source of bred replacement heifers which have gone through a reproductive tract score and pelvic measurement as well as being bred to low birth weight bulls to reduce the risk of calving difficulties. MU Extension livestock specialists work with producers enrolling heifers to collect data and run sales. In fall of 2023, 928 Show-Me-Select logo heifers were marketed through six



Legend



Agricultural Growth & Stewardship



Economic Opportunity



Educational Access & Excellence



Health & Well-Being



MU EXTENSION **Serves MISSOURI and Delivers MIZZOU** through credible statewide programs **Agriculture and Environment**

Missouri Show-Me-Select Replacement Heifers Analysis
Sale Lot Summaries by Head 2023



11/17/2023 Carthage Joplin Regional Stockyards

Tier II AI	Tier II NS	Tier I AI	Tier I NS	All AI	All NS	All Heifers	
Head	0	1	42	42	42	43	85
% Head	0.0%	1.2%	49.4%	49.4%	49.4%	50.6%	100.0%
Sales	\$0	\$2,600	\$125,150	\$119,300	\$125,150	\$121,900	\$247,050
% of Sales	0.0%	1.1%	50.7%	48.3%	50.7%	49.3%	100.0%
\$/Head (max)	\$0	\$2,600	\$3,500	\$3,300	\$3,500	\$3,300	\$3,500
\$/Head (ave)	\$0	\$2,600	\$2,979	\$2,840	\$2,979	\$2,834	\$2,906
\$/Head (min)	\$0	\$2,600	\$2,100	\$2,300	\$2,100	\$2,300	\$2,100

11/18/2023 Kingsville Kingsville Regional Stockyards

Tier II AI	Tier II NS	Tier I AI	Tier I NS	All AI	All NS	All Heifers	
Head	18	5	65	93	83	98	181
% Head	9.9%	2.8%	35.9%	51.4%	45.9%	54.1%	100.0%
Sales	\$55,350	\$14,000	\$190,050	\$262,575	\$245,400	\$276,575	\$521,975
% of Sales	10.6%	2.7%	36.4%	50.3%	47.0%	53.0%	100.0%
\$/Head (max)	\$4,300	\$2,800	\$3,500	\$3,500	\$4,300	\$3,500	\$4,300
\$/Head (ave)	\$3,075	\$2,800	\$2,923	\$2,823	\$2,956	\$2,822	\$2,883
\$/Head (min)	\$2,300	\$2,800	\$2,250	\$2,400	\$2,250	\$2,400	\$2,250

12/1/2023 Fruitland SEMO Livestock Sales, LLC

Tier II AI	Tier II NS	Tier I AI	Tier I NS	All AI	All NS	All Heifers	
Head	3	6	33	21	36	27	63
% Head	4.8%	9.5%	52.4%	33.3%	57.1%	42.9%	100.0%
Sales	\$8,600	\$16,000	\$92,300	\$53,900	\$100,900	\$69,900	\$170,800
% of Sales	5.0%	9.4%	54.0%	31.6%	59.1%	40.9%	100.0%
\$/Head (max)	\$3,000	\$2,800	\$3,900	\$2,900	\$3,900	\$2,900	\$3,900
\$/Head (ave)	\$2,866	\$2,666	\$2,796	\$2,566	\$2,802	\$2,588	\$2,711
\$/Head (min)	\$2,600	\$2,500	\$2,300	\$2,000	\$2,300	\$2,000	\$2,000

12/8/2023 Kirksville Kirksville Livestock, LLC

Tier II AI	Tier II NS	Tier I AI	Tier I NS	All AI	All NS	All Heifers	
Head	2	0	54	70	56	70	126
% Head	1.6%	0.0%	42.9%	55.6%	44.4%	55.6%	100.0%
Sales	\$5,450	\$0	\$147,850	\$186,050	\$153,300	\$186,050	\$339,350
% of Sales	1.6%	0.0%	43.6%	54.8%	45.2%	54.8%	100.0%
\$/Head (max)	\$2,850	\$0	\$3,200	\$3,200	\$3,200	\$3,200	\$3,200
\$/Head (ave)	\$2,725	\$0	\$2,737	\$2,657	\$2,737	\$2,657	\$2,693
\$/Head (min)	\$2,600	\$0	\$2,400	\$2,250	\$2,400	\$2,250	\$2,250

12/8/2023 Farmington Farmington Regional Stockyards

Tier II AI	Tier II NS	Tier I AI	Tier I NS	All AI	All NS	All Heifers	
Head	29	9	45	48	74	57	131
% Head	22.1%	6.9%	34.4%	36.6%	56.5%	43.5%	100.0%
Sales	\$81,300	\$21,300	\$118,150	\$119,800	\$199,450	\$141,100	\$340,550
% of Sales	23.9%	6.3%	34.7%	35.2%	58.6%	41.4%	100.0%
\$/Head (max)	\$3,400	\$2,600	\$3,200	\$3,000	\$3,400	\$3,000	\$3,400
\$/Head (ave)	\$2,803	\$2,366	\$2,625	\$2,495	\$2,695	\$2,475	\$2,599
\$/Head (min)	\$2,400	\$2,100	\$2,100	\$2,200	\$2,100	\$2,100	\$2,100

12/9/2023 Palmyra F&T Livestock Market

Tier II AI	Tier II NS	Tier I AI	Tier I NS	All AI	All NS	All Heifers	
Head	11	4	146	181	157	185	342
% Head	3.2%	1.2%	42.7%	52.9%	45.9%	54.1%	100.0%
Sales	\$29,000	\$10,650	\$406,650	\$478,800	\$435,650	\$489,450	\$925,100
% of Sales	3.1%	1.2%	44.0%	51.8%	47.1%	52.9%	100.0%
\$/Head (max)	\$3,000	\$2,750	\$3,900	\$3,350	\$3,900	\$3,350	\$3,900
\$/Head (ave)	\$2,636	\$2,662	\$2,785	\$2,645	\$2,774	\$2,645	\$2,704
\$/Head (min)	\$2,000	\$2,450	\$2,000	\$1,900	\$2,000	\$1,900	\$1,900

Legend



Agricultural Growth & Stewardship



Economic Opportunity



Educational Access & Excellence



Health & Well-Being



MU EXTENSION **Serves MISSOURI and Delivers MIZZOU**

through credible statewide programs

Agriculture and Environment

Farmfest

Scenes from the University of Missouri Extension booth at the Ozarks Farm Fest in Springfield. An estimated 40,000 people attended this popular event in the Ozarks and field specialists staffed the booth during the three-day event.



Pearls of Production – Women in Ag Conference

The Pearls of Production-Women in Agriculture conference is a program designed to provide a leadership and hands-on training opportunity for women involved in livestock production. Several field and state specialists come together to plan this conference annually. The women producers get hands-on training and a supportive community of women livestock producers.



Legend



Agricultural Growth & Stewardship



Economic Opportunity



Educational Access & Excellence



Health & Well-Being



MU EXTENSION **Serves MISSOURI and Delivers MIZZOU**
through credible statewide programs
Agriculture and Environment

Artificial Insemination Schools

Elizabeth Picking Livestock Specialist, Reagan Bluel Dairy Specialist, and Chloe Collins Dairy Specialist taught artificial insemination schools in March and November of 2023 in partnership with Kent Daniels from Select Sires, the MU Southwest Research, Extension, and Education Center, American Foods Group, and Joplin Regional Stockyards.



This multi-day school combined classroom learning about estrous synchronization, reproductive anatomy, and management strategies to increase AI success with hands-on learning. Attendees were able to get hands on practice artificially inseminating cows and handling and thawing semen. These attendees became certified to artificially inseminate cattle.

Legend



Agricultural Growth
& Stewardship



Economic
Opportunity



Educational
Access &
Excellence



Health
& Well-Being

Wright County

Agriculture and Environment

Local Impact

Career Exploration Day

1600 area youth came to the SW Research, Education, and Extension Center in Mt. Vernon on September 21st to learn about careers in agriculture. Chloe Collins spoke to students about careers in the cattle industry and all about the rumen, the largest stomach, of the cow.





MU EXTENSION **Serves MISSOURI and Delivers MIZZOU**
 through credible statewide programs
Agriculture and Environment

SWREEC Field Day (Lawrence and other counties)

Hundreds of students at the annual FFA Exploration Day at the MU SWREEC learned about beekeeping and the importance of pollination from Heroes to Hives project participants.



Produce Food Safety

FSMA PSA produce food safety training

This statewide program provides an intensive 8-hour training that meets the training requirement for farms subject to the Food Safety Modernization Act Produce Safety Rule. Activity in 2023 included 5 virtual and in-person trainings that reached over 100 farmers and others interested in produce food safety. Attendees are from across the state of Missouri.



Legend



Agricultural Growth & Stewardship



Economic Opportunity



Educational Access & Excellence



Health & Well-Being



MU EXTENSION **Serves MISSOURI and Delivers MIZZOU**

through credible statewide programs

Agriculture and Environment

2023 Soil Test Reports (Webster, Wright, Douglas, Ozark, Texas, Howell, and other counties in SW region)

Patrick Byers examined and made recommendations on 190 soil tests for horticultural producers and home gardeners from counties across the southwest region. Soil testing is an excellent way to evaluate a site for specialty crop production, and to monitor a soil fertility management plan for established specialty crops. And soil testing saves money!

Individual consultation with specialty crop farmers (all counties in SW region)

Individual consultations assist commercial specialty crop producers at all stages of production, from conception to start up to commercial production.

Legend



**Agricultural Growth
& Stewardship**



**Economic
Opportunity**



**Educational
Access &
Excellence**



**Health
& Well-Being**



MU EXTENSION **Serves MISSOURI and Delivers MIZZOU**

through credible statewide programs

Business and Community

MU Extension
Business Development Programs
COUNTY ANNUAL REPORT
Fiscal Year 2023



County Name: Wright

As entrepreneurs and innovators, Missouri’s small businesses are becoming a more diverse group that continues to make the state’s economy productive. There are approximately 500,000 small businesses in Missouri. Nearly 98 percent of all businesses with employees are categorized as small businesses. In assisting the owners and managers of those businesses, MU Extension contributes to a county’s economic development through growth in jobs, sales, innovation, technology development and commercialization.

In Wright County, during 2023, business development program specialists and business counselors with MU Extension, Missouri Small Business Development Centers, and Missouri Procurement Technical Assistance Center assisted 10 clients with individual management counseling. In addition, 30 Wright County residents attended training events to better manage their businesses. As a result, 2 new jobs were created, 19 jobs retained, and 1 Systems for Award Management (SAM) registration was completed to assist the client with obtaining federal funding.

Legend



Agricultural Growth & Stewardship



Economic Opportunity



Educational Access & Excellence



Health & Well-Being

Missouri Good Neighbor Week 2023

Snapshot of Results



Named "Neighboring Program of the Year" in 2023 by Neighborhoods USA



74 +

Service Events

These groups — including 65 MU Extension county councils — worked together to serve their neighbors.



8973 +

Visitors to website

to learn more about what it means to be an engaged neighbor in Missouri.



382

tagged posts

On Facebook, LinkedIn, Instagram and Twitter celebrating good neighbor week activities. #mogoodneighbor #goodneighborweek

19,778

Missourians

Impacted

by acts of neighboring done & reported during Missouri Good Neighbor Week 2023. (Up from 12,850 in 2022)

2.4 million

Impressions from TV PSAs, interviews, radio, podcasts & 24 newspaper columns statewide.



2302

downloads

of reports, graphics, idea & library packets, and digital toolkits for Missouri Good Neighbor Week.

62

People were nominated as one of Missouri's **Most Engaged Neighbor.**

Missourians really appreciate neighbors that go the extra mile.



1183

People involved in an **act of neighboring.**

Everything from mowing yards to delivering cookies to first responders. Many times more than one person was involved.

<http://missourigoodneighborweek.com>

Extension Tax Schools

University of Missouri Extension ag economics department and ag business specialists worked together to coordinate one summer and three fall tax schools. The summer school was in person and live online. Fall schools were in Columbia and Springfield and in addition a was online. The schools were designed for those who prepare taxes including enrolled agents, tax preparers, CPAs, individuals, and attorneys.

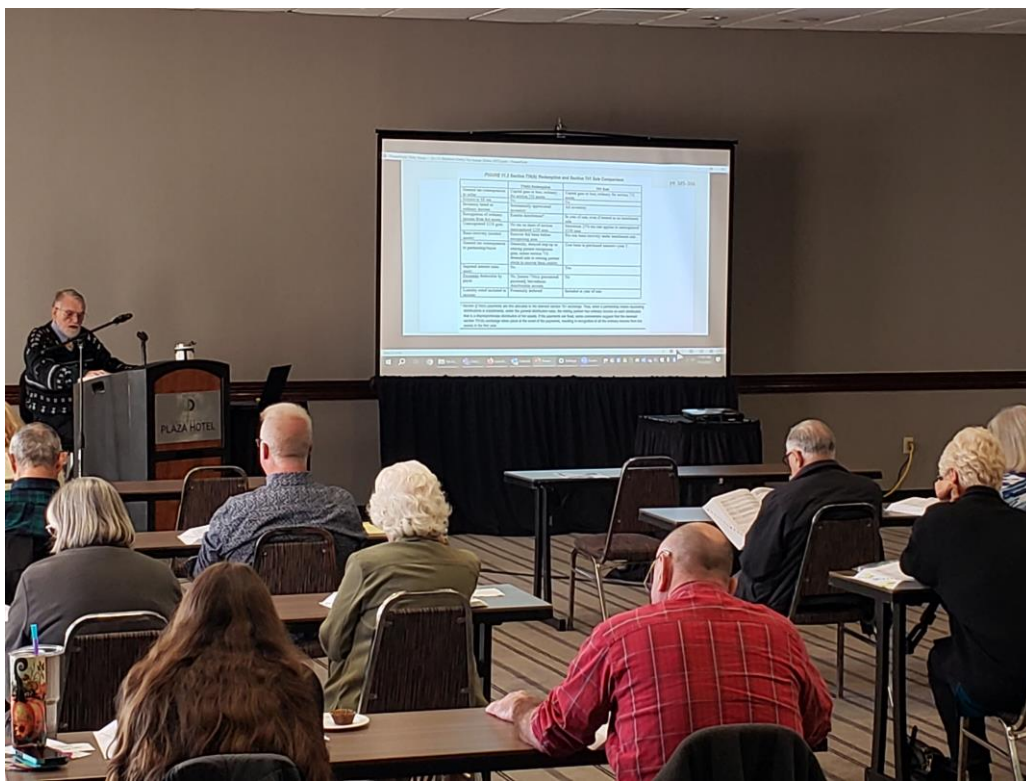
The training included updates on legislation, rulings and cases, individual taxpayer issues, agricultural and natural resources topics, ethics, trusts and estates, agriculture and natural resource tax issues, business tax issues, business entity tax issues, IRS issues, penalties and defenses, form 4797 sales of property, retirement tax issues, like-kind exchange issues. The schools were approved for 8 and 16 hours of continuing education credit by the IRS, Missouri Bar and for CFP continuing education. Total continuing education hours reported to IRS for the schools was 3,336 hours.

The teaching teams included a CPA and former IRS stakeholder liaison, an IRS certified retired ag economics professor, an attorney, Missouri Department of Revenue and extension ag business specialists.

The trainings received positive evaluations and planning is underway to offer trainings in 2024. Local county residents benefit when local tax preparers have the opportunity to gain knowledge, which benefits their clients and communities. The tax schools are a program of the ag business and policy program of MU Extension, coordinated by Mary Sobba with help from a team of ag business specialists throughout the state.

The resources for the schools included the IRS, the National Income Tax Workbook from the Land Grant University Tax Education Foundation, and materials written by the instructors.

The 2023 school attendance totaled three hundred twenty-seven people. The participants were from throughout Missouri.



2023 Total participants by County	
Adair	12
Andrew	3
Atchison	1
Audrain	11
Barry	4
Barton	2
Bates	3
Benton	3
Bollinger	1
Boone	14
Buchanan	13
Butler	1
Caldwell	1
Callaway	0
Camden	1
Cape Girardeau	12
Carroll	1
Carter	2
Cass	1
Cedar	
Chariton	3
Christian	4
Clark	3
Clay	6
Clinton	0
Cole	6
Cooper	0

Crawford	0
Dade	0
Dallas	3
Daviess	3
DeKalb	0
Dent	6
Douglas	0
Dunklin	1
Franklin	1
Gasconade	3
Gentry	2
Greene	6
Grundy	0
Harrison	7
Henry	5
Hickory	1
Holt	2
Howard	2
Howell	2
Iron	0
Jackson	5
Jasper	3
Jefferson	5
Johnson	5
Knox	0
Laclede	4
Lafayette	8
Lawrence	3
Lewis	0
Lincoln	4

Linn	2
Livingston	11
Macon	8
Madison	0
Maries	2
Marion	2
McDonald	3
Mercer	0
Miller	6
Mississippi	0
Moniteau	4
Monroe	1
Montgomery	2
Morgan	1
New Madrid	2
Newton	5
Nodaway	4
Oregon	2
Osage	1
Ozark	0
Pemiscot	0
Perry	0
Pettis	3
Phelps	1
Pike	3
Platte	3
Polk	3
Pulaski	1
Putnam	0
Ralls	5

Randolph	4
Ray	0
Reynolds	0
Ripley	0
Saline	13
Schuyler	3
Scotland	4
Scott	5
Shannon	0
Shelby	5
St. Charles	6
St. Clair	0
St. Francois	1
St. Louis	4
St. Louis (city)	0
Ste. Genevieve	0
Stoddard	2
Stone	0
Sullivan	0
Taney	2
Texas	0
Vernon	5
Warren	5
Washington	0
Wayne	0
Webster	2
Worth	0
Wright	2
Illinois	0



Economic Opportunity

Serving: Greene, Polk, Dallas, Webster, Wright, Texas, Shannon, Oregon, Howell, Ozark, Douglas, Christian, Taney, Stone, Barry

Missouri Small Business Development Center (SBDC)

The Missouri SBDC at Missouri State University provides support to your county's entrepreneurs and small business owners through 1:1 assistance and training. Over the course of 2023, our office met with clients to discuss a wide range of topics including:

- Starting a business
- Business financing
- Business expansion and relocation
- Financial planning & cash flow management
- Marketing strategy & strategic growth
- Course projects with MSU students
- Purchasing a business
- International expansion opportunities
- Technology commercialization

Through leveraging regional partnerships several programs geared toward small businesses and enhancing the local workforce were offered through an initiative called Innovate SOMO. This collaborative effort led by Codefi and efactory aims to unlock the full potential of entrepreneurship and innovation to transform communities in the southernmost 47 counties in Missouri. Programs offered throughout the region include:

- Early-Stage Business Boot Camp
- 120 Day Tech Startup
- Code Labs
- Youth Coding League

REGIONAL KEY OUTCOMES

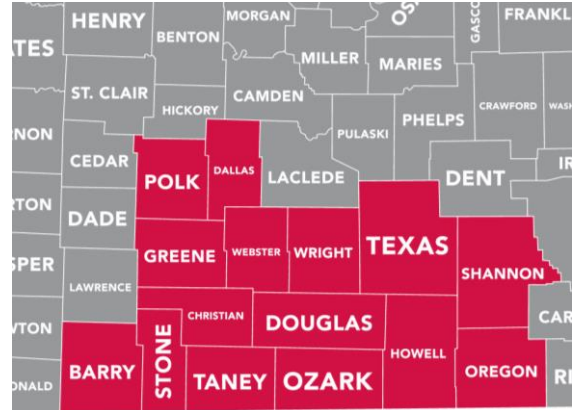
- ✓ **704** Business owners received multiple 1:1 consulting sessions regarding their small businesses.
- ✓ **\$33.4 million** Approved capital funding
- ✓ **\$86.3 million** Increase in sales
- ✓ **31** New businesses started
- ✓ **403** New jobs created
- ✓ **39,446** Jobs retained
- ✓ **1589** Attendees joined our business and professional development training programs.

Impact data is client verified and obtained by approximately 30% of clients annually for the statewide network.

The Missouri SBDC is funded in part through a cooperative agreement with the U.S. Small Business Administration.



Missouri State
UNIVERSITY



The Missouri SBDC at Missouri State University serves 15 counties in southwest Missouri (highlighted).

Learn more about our latest programs and training

sbdc@missouristate.edu

417-837-2617

sbdc.missouristate.edu

STATEWIDE HIGHLIGHTS

\$730,110,142

Increase in sales for client companies through the assistance of the Missouri SBDC network

\$525,507,913

Government contracts secured through the assistance of APEX Accelerators (formerly MO PTAC)

\$153,938,797

Capitalization secured through the assistance of the SBDC

Wright County

Community and Professional Health Education

Shelby Yake, Community Health Specialist (CHS)

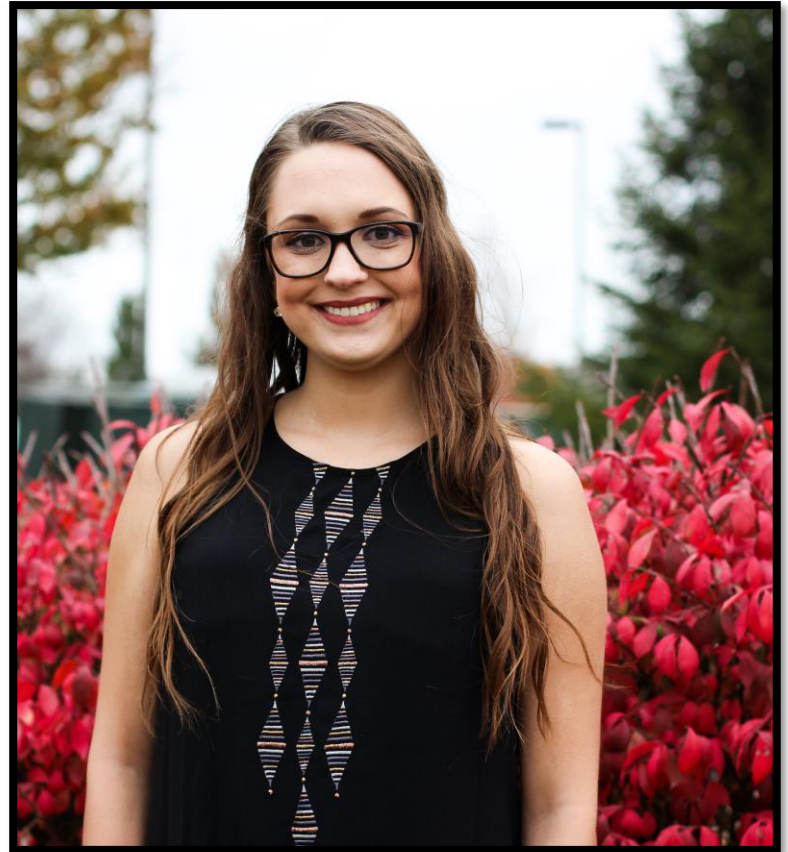
Background Information

- Hello! My name is Shelby Yake. I am the new Community Health Specialist (CHS) with MU Extension. My office is in Ava (Douglas County), but I serve the rural southwest region of the state. I serve Douglas, Howell, Ozark, Taney, Texas, Webster, and Wright counties. I started this position in July 2023.
- I was born and raised in southwest Missouri. After high school, I attended Missouri State University (MSU) in Springfield, MO. I have a Bachelor of Science in Operations Management, with a minor in International Marketing, as well as a Master of Science in Secondary Family and Consumer Sciences (FCS) Education. I also have a lifelong teaching certificate in K-12 FCS education.



Office of Health Outreach, Policy, and Education (HOPE)

- I am an employee of HOPE.
- HOPE is a partnership between MU Extension, MU School of Medicine, and MU School of Health Professions.
- The director of HOPE is Dr. Kathleen Quinn.
- HOPE has 5 departments: Missouri TeleHealth Network (MTN), Rural Scholars Program, Continuing Education for Health Professions, Center for Health Policy, and Community Health Engagement and Outreach (CHEO).



Community Health Engagement & Outreach (CHEO)

- I am a specialist with the CHEO team.
- Our mission at CHEO is to achieve optimal health and well-being for every Missourian at every stage of life. We serve people of all ages – youth and adults.
- CHEO's main focuses are prevention, health and well-being promotion, and opioid and substance use disorder programs. CHEOs programs cover topics such as: vaccinations, diabetes prevention, health disparities, recovery friendly communities, trauma-informed health education, and promoting resilience.
- If you have any questions or would like further information, please contact me.



Wright County

Community and Professional Health Education

Shelby Yake, Community Health Specialist (CHS) – Ongoing Programs

Extension for Community Healthcare Outcomes (ECHO) → Partnership with Missouri TeleHealth Network (MTN)

MU Extension's Show-Me ECHO uses videoconferencing to connect interdisciplinary teams of experts with primary care clinicians and other professionals. ECHO topics include Hepatitis C, pain management, eating disorders, Head Start, diabetes, kidney disease, HIV, hypertension, oral health, opioid use, asthma, and more. Part of my role as a CHS is to educate people about ECHO and market and attend ECHOs.



Layperson Naloxone Training

This course is designed to teach people how to recognize the signs of an opioid overdose, discuss harm reduction strategies in the opioid public health crisis, understand overdose prevention tips, and confidently and accurately administer Naloxone. This class can be 30 or 60 minutes.



Recovery Friendly Workplaces (RFW)

The RFW initiative empowers workplaces to support people affected by substance use disorders and those in recovery. RFW foster a workplace culture that promotes employee safety, health, and well-being through strategies that provide support for managers and employees, including reducing stigma and providing recovery resources related to the challenges surrounding substance use disorders. I can meet with any employers/businesses interested in becoming Recovery Friendly.



The Brain & The Disease of Addiction

The course is designed to teach people about the disease of addiction by looking at brain neuroplasticity, how the brain is affected by substances such as drugs and alcohol, how the disease of addiction develops, and how treatment and recovery can change and reset the brain. This class can be 30 or 60 minutes.



WeCanPROSPER Resilience Training (WRT)

WRT is a research-based training grounded in a long tradition of resilience enhancement science that enables participants to improve personal stress management, clarify their resilience needs, identify relevant supportive resources, and build skills to enhance resilience during their daily routines. I am certified to facilitate the WRT virtually and in person.





Wright County

Community and Professional Health Education

Shelby Yake, Community Health Specialist (CHS)

2023 Programs & Events in Wright County

- Workdays in Wright County office: 2



← Community Health Engagement & Outreach (CHEO) Team at MU Extension & Engagement Week on 10-23-23

2023 Missouri Substance Use Prevention Conference
in Columbia, MO (November 13 & 14, 2023) ↓



Community Health Specialists (L to R): Me, Rachel Brown, Emily Poncher, & Hari Koirala ↓



Community Health Needs Assessment (CHNA)

All CHSs have been working on CHNA since September 2023. The assessments focus on strengthening the bridge between leading scientific research and community-based Extension practice. The goal is to create a dissemination and implementation protocol that will facilitate acceleration of relevant knowledge and discovery into the most vulnerable Missouri communities throughout MU Extension's CHEO office. Some key findings about Wright County from the CHNA are listed below.

- Average age of farm/ranch operators: 56.3 years
- Percentage of adults sleeping < 7 hours/night on average (age-adjusted rate): 36% (MO: 33.9% and US: 33.3%)
- Percentage of adults who are current tobacco smokers (age-adjusted rate): 27% (MO: 19.18% & US: 13.80%)
- Percentage of adults self-reporting excessive alcohol drinking: 17.44% (lowest in my coverage area – MO is 19.95% and US is 19%)
- Stroke mortality (age-adjusted death rate) per 100K pop: 48.6 (highest in my area – MO: 39.6 & US: 37.6)
- Percentage of population living in an area affected by a Health Professional Shortage Area (HPSA): 58.02% (2nd highest in my area – MO is 27.43% and US is 23.78%)
- # of Substance Abuse providers: 1 (5.5 per 100K pop)
- # of Primary Care Physicians: 3 (16.37 per 100K pop)
- # of Dentists: 9 (48 per 100K population)
- # of Mental Health providers: 21 (113 per 100K pop)
- Most commonly diagnosed cancer: Lung & Bronchus



MU EXTENSION **Serves MISSOURI and Delivers MIZZOU**
 through credible statewide programs
Community and Professional Health Education

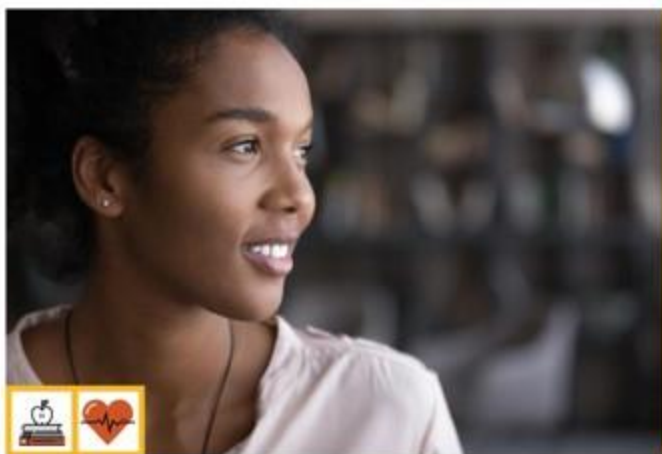


Resilience is the capacity to adapt when faced with adversity. **WeCanPROSPER Resilience Training** is a 2.5 hour training for participants to evaluate their personal resilience, tap into resources and create an action plan to enhance their resilience.

100% of participants indicate that the skills and techniques they learned will help them become **MORE RESILIENT.**



The **Missouri Research-Extension (MO-RE)** Protocol program focuses on strengthening the bridge between leading scientific research and community-based practice by creating a dissemination and implementation protocol that will facilitate acceleration of relevant knowledge into the most vulnerable Missouri communities through Community Health Engagement and Outreach.



Adverse childhood experiences (ACEs) can lead to trauma and increased risks of substance use disorders, including opioid and alcohol misuse.

Show-Me ACEs

- offers educational opportunities to professionals, communities, and individuals to help mitigate the impact of ACEs within communities
- empowers individuals to make trauma-informed decisions related to ACEs and chronic stress

Legend



Agricultural Growth & Stewardship



Economic Opportunity



Educational Access & Excellence



Health & Well-Being



MU EXTENSION **Serves MISSOURI and Delivers MIZZOU**

through credible statewide programs

Health and Human Sciences

The Supplemental Nutrition Assistance Program Education (SNAP-Education or SNAP-Ed) brought \$10,874,798 in federal funds to Missouri. During FY2023, Missouri's SNAP-Ed program reached over 78,000 Missourians through direct classroom education. Each person participated in an average of 6 hours of education totaling over 15,000 hours. In addition, an additional 760,135 persons participated in indirect education. Direct and indirect education resulted in over 1.8 million total contacts with Missourians.

A total of 6,913 participants were from Wright County.

Participants in SNAP-Ed learn the importance of making healthier meals and snack choices, eating breakfast more often, are more willing to try new foods, increase their physical activity, and make healthier food choices. Those who practice healthy eating and are physically active are more likely to contribute to a healthy labor force and enjoy a high quality of life throughout the lifespan.

This vital programming effort also reduces healthcare costs over the participant's lifetime, saving taxpayer money in reduced public healthcare benefits and insurance premiums.

Legend



Agricultural Growth
& Stewardship



Economic
Opportunity



Educational
Access &
Excellence



Health
& Well-Being

Local Impact

Schools/Agencies served:

- Manes Elementary
 - Wilder Elementary School (Mansfield)
 - Grovespring Elementary
 - Mountain Grove Elementary, Middle & High School
 - Hartville Elementary and Jr. High
 - Mountain Grove Head Start
 - Norwood Elementary and Highschool
 - Love Center Food Pantry
 - Mountain Grove Christian Academy
 - Wright Co. Division of Family Services
 - Wright County Crisis Center
 - Wright County Pregnancy Resource Center
 - Ozark Action -Wright County
 - Town and Country Supermarket-Hartville
 - Mountain Grove Farmer's Market
-

Local Profiles and Stories

Nutrition Program Associate, Christi Crisp, shared the following success stories from Wright County:

On July 27th at the Wright County Crisis Center and Thrift Store, I made the recipe "Grape Salsa" for participants to sample. I had a lady stop by my table and ask about the recipe. She looked at the food and the recipe. I could tell she really didn't want to try it, but after some encouraging, she did. After tasting the salsa, she said, "If I had not tried this recipe, I wouldn't have known how good it is! If the recipe was just here and not a sample, I would have passed it up. This is so good though; I am going to make it for my family!"

Last week in my 3rd grade class at Norwood Elementary, I talked to the students about whole grains and how to identify them. This week when I reviewed that lesson with the class, one student told me she went home and looked at all the grain foods in her home. She told me, " We have some whole grains at home, it was the cereal! But the bread wasn't." This student took home what information I gave her and proceeded to do an investigation of whole grains on her own.



Local Profiles and Stories

Nutrition Program Associate, Ashley Garner, shared the following success story from Wright County:

In May, I was teaching Building MyBody out of the Show Me Nutrition curriculum at Mountain Grove Elementary, we had gone over Lesson 3 the day before and discussed Fat in Fast Food. The next day, a 3rd grade student came up to me in the hallway and said, “My Mom, took me to McDonalds last night for supper, but instead of getting a Big Mac, I got a happy meal instead” He was so proud, and so was I! He even mentioned, that his Mom asked him are you learning how to eat healthy in school and he was so happy that she was proud of him.





MU EXTENSION **Serves MISSOURI and Delivers MIZZOU**
 through credible programs
Health and Human Sciences



Studies show that people with strong family bonds tend to have lower stress levels.

Building Strong Families helps families amplify their strengths, tackle challenges and make confident, informed decisions to build resilient family units.



Chronic Disease Self-Management programs offer evidence-based information for individuals and their caregivers to boost self-confidence in managing symptoms, enhancing quality of life and even reducing health care expenses.

These programs have undergone rigorous evaluation and are proven to be effective tools for individuals dealing with chronic conditions like arthritis, fibromyalgia, depression and diabetes.



Mental Health First Aid equips people to recognize and respond to signs of mental illness and substance use disorders.

The youth version of the program is designed to support adolescents ages 12-17 facing mental health or addiction challenges, while the adult version focuses on adults age 18 and older. Participants learn how to offer initial assistance and guide individuals toward the care they need.

**In Missouri, approximately
 1 MILLION ADULTS and 72,000 ADOLESCENTS
 suffer from MENTAL HEALTH ISSUES.***

*Missouri Department of Mental Health 2020 Status Report

Legend



Agricultural Growth & Stewardship



Economic Opportunity



Educational Access & Excellence



Health & Well-Being

Wright County

Health and Human Sciences

Local Impact



Della Miller
Field Specialist in Human Development

Serving Laclede, Camden, Dallas, Polk, Benton, Hickory, Wright and Webster Counties

What Individuals Found Most Helpful After Taking Mental Health First Aid:

“The ALGEE action plan is what I found most helpful. It gives you something to work through when you see someone struggling.”

“Talking through different scenarios helped me get a feel of how a conversation may go in real life”

Collaborative Teamwork

Childcare Provider Workgroup Childcare programming by Human Development and Family Science Field Specialists in-person and virtually was completed statewide. The childcare programming provides statewide clock hours for professional development for childcare providers who are required to obtain 12 hours each year. In 2023, 610 childcare providers attended across the state of Missouri through 36 sessions amounting to 1,220 clock hours provided for professional development. This program served 32% of Missouri counties and the City of St. Louis.

- I contributed to this effort by teaching or moderating three (3) virtual classes to fifty-seven (57) participants in six (6) counties.
- As an acknowledgment of our teamwork, we were awarded
 - *Early Childhood Childcare Training Award (2023). 3rd place National Extension Association for Family & Consumer Sciences.*
- **Building Strong Families (BSF)** In January 2022, the University of Missouri Extension was approved as a contractor with the Missouri Division of Social Services. This enabled Human Development and Family Science Specialists to offer parenting education to parents who seek to maintain or regain custody of their children. Through Zoom and in-person classes, the team served 91 parents, and a total of 740 hours were earned, impacting over 181 Missouri children.
- I contributed to this effort by teaching or moderating three (3) sessions virtually with participants from twenty-three (23) throughout Missouri.
- As acknowledgment of our teamwork success, we were awarded:
 - *National Winner Human Development-Family Relationships Award (2023). 3rd place National Extension Association for Family & Consumer Sciences.*
 - *Human Development-Family Relationships (2023). 2nd Place. Central Region. National Extension Association of Family & Consumer Science.*

Mental Well-Being

Mental Health First Aid

Since December 2020, 921 participants across Missouri and four additional states have become certified as mental health first aiders by completing Mental Health First Aid for adults and youth.

I completed the certification to teach Mental Health First Aid for adults in August of 2023. Since completing the certification I have facilitated/co-facilitated three (3) virtual Mental Health First Aid for adult programs which resulted in the following outreach and teaching results:

- Instructed **Mental Health First Aid** three (3) times to sixty-four (64) participants from twenty (20) counties in Missouri.
- Scheduled **Taking Care of You (TCOY)** once with a limited number of participants. This class was at the request of the county.